

M042

Sapphire love

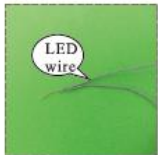
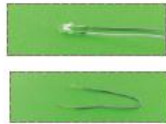


M042 Instruction manual

NOTICE OF ASSEMBLE

Making tips

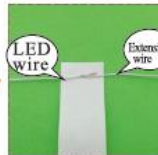
1. LED wiring indication: White=Positive; Grey=Negative.
2. Use a craft blade to carefully skim over the plastic to bare the copper wire.
3. For LED wiring extension, please refer to the below steps:



Twist the copper of both LED wire and extension wire together.



Do the same on the white wire. Remarks: Tie a knot at the end of the grey wire to differentiate the polarity.



Place the duly twist wire on the tapes provided.



Roll and wrap the wire.



Place another wire next to it. Remarks: DO NOT contact both copper wire to avoid short circuit.



Roll and wrap it together.

Warnings

- The product is not suitable for children under 14 years old. The should be under custody of adults when playing with the product.
- There are small parts, please do not swallow them for avoiding dangerous accidents.

Tips for assembling

1. Pictures shown on the package may be slightly different from the actual product.
2. Please use the provided tracing paper for cutting purpose to achieve the best outcome.
3. Product designs and specification may be subject to change without advance notice for purpose of making improvement.
4. Testing on LED function:



DO NOT contact the LED wire end direct to the battery cell.



Use the provide battery holder. Make sue the correct polarity.

How to assemble the battery holder



1. Material and tools needed:
- Battery holder, LED bulb, tape, screw driver and 2 piece AA size battery(not provided)



2. Use screw driver and take the lid off from the battery holder.



3. Insert the battery take notes on the polarity.



4. Connect the red wire to grey wire. Connect the black wire to white wire.



5. Wrap the exposed wire with the tapes.

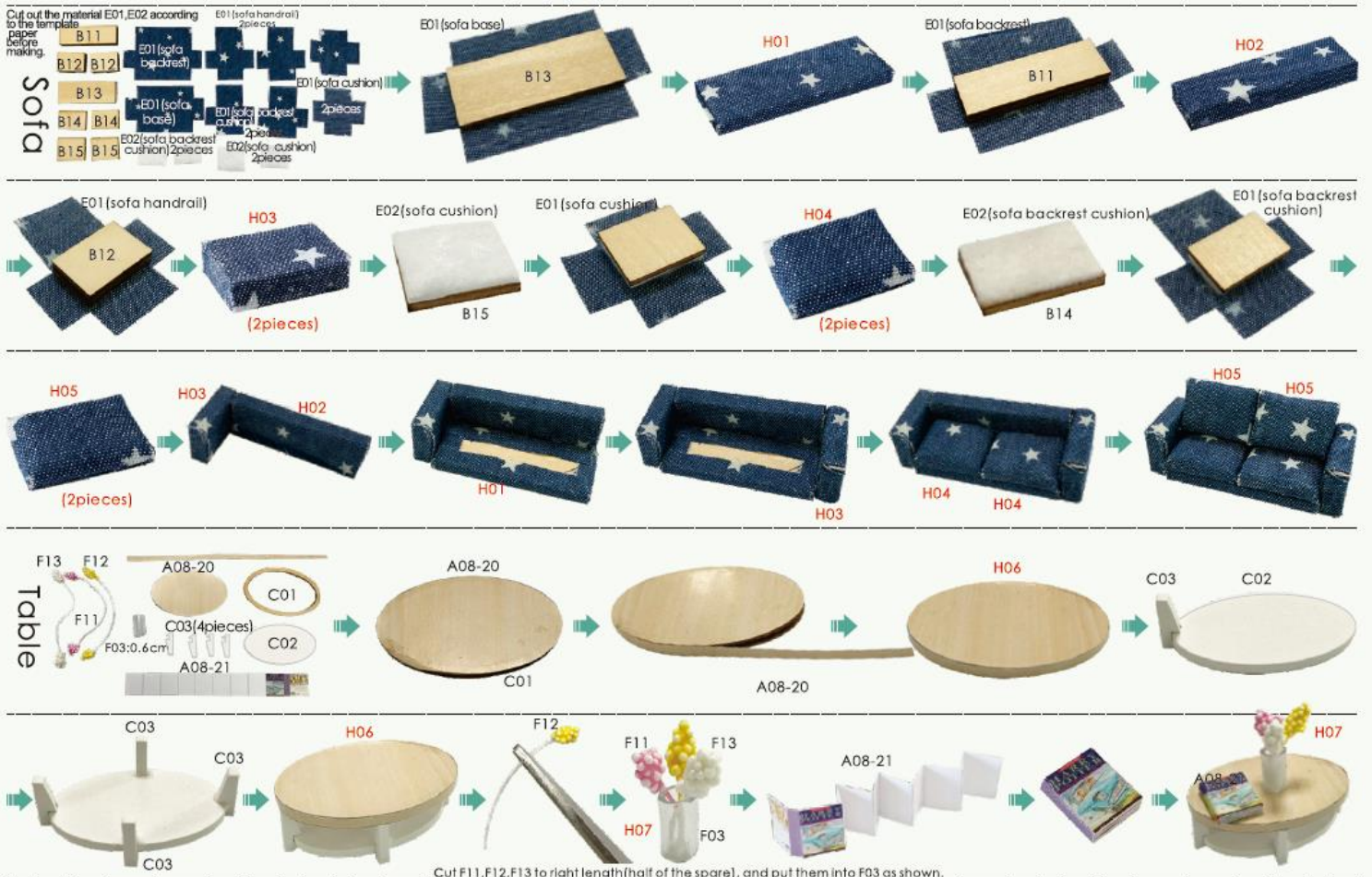


6. Place the box lid and fastness with screw driver.

Product information



2



3

Billiard table

Assembly steps for the billiard table: 1. Assemble the wooden frame using parts C04, C05, and C06. 2. Attach the green felt (A08-19) to the inner frame. 3. Attach the outer wooden border (C04). 4. Add the legs (C06). 5. Assemble the accessories: cue sticks (A08-12, C07), cue rack (F05), and balls (H08).

Assembly steps for accessories: 1. Assemble cue sticks (A08-12, C07). 2. Assemble cue rack (F05, H08). 3. Assemble the ball rack (A08-12, H08). 4. Place the longest printed paper with triangular printing on the cue sticks.

Bath cabinet

Cut out the material E02 according to the template paper before making.

Assembly steps for the bath cabinet: 1. Assemble the main body (C08, C09, C10). 2. Attach the sink (C12, F07). 3. Attach the mirror (E06). 4. Attach the door (A08-16, C09).

Refrigerator

Assembly steps for the refrigerator: 1. Assemble the main body (C10, C12, F07). 2. Attach the mirror (E06). 3. Assemble the refrigerator body (C13, C14, C15, C16, C17, C18).

Assembly steps for the refrigerator (continued): 1. Attach the top panel (C13, C14). 2. Attach the door (C15, C17). 3. Attach the handles (C18).

4

Bed

Cut out the material E02 according to the template paper before making.

Assembly steps for the bed: 1. Assemble the wooden frame (D01, D02, D03, D04). 2. Attach the mattress (E02). 3. Assemble the quilt (E03). 4. Assemble the pillow (E03, E08).

Assembly steps for the bed (continued): 1. Attach the quilt (E03). 2. Attach the pillow (E03, E08). 3. Put glue on the red dotted line and fold it. 4. Put some E08 into pillow case and glue it if as shown.

Piano

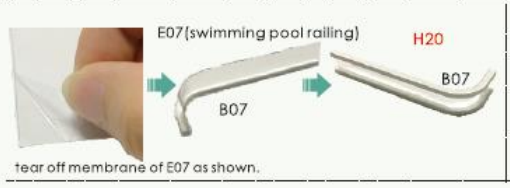
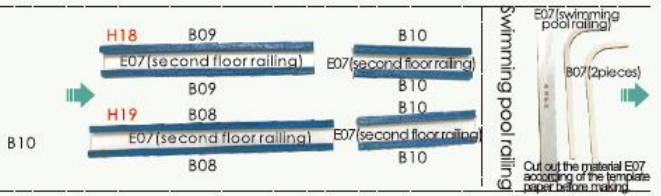
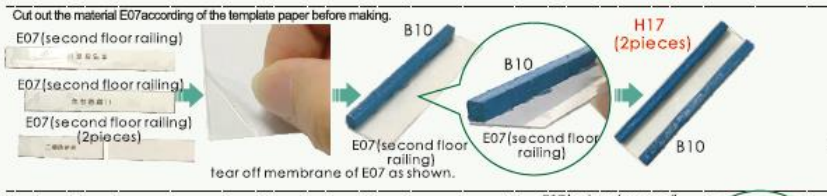
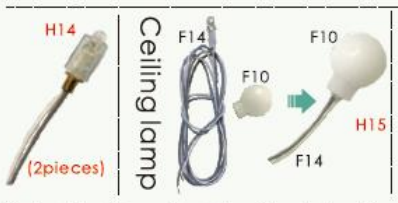
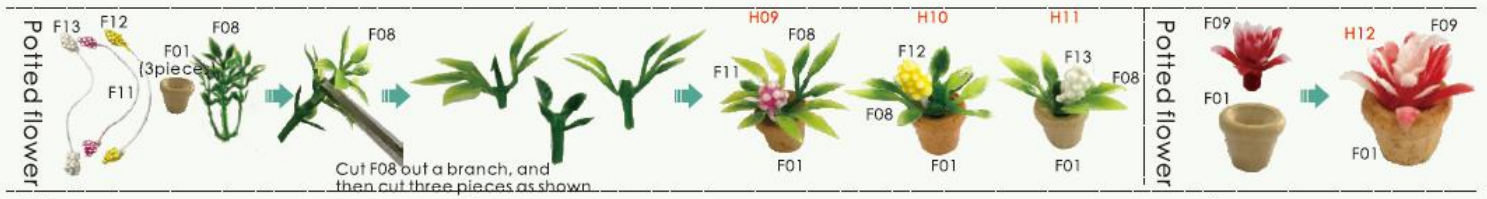
Assembly steps for the piano: 1. Assemble the main body (D05, D06, D07, D08, D09, D10). 2. Attach the keyboard (A08-15).

Assembly steps for the piano (continued): 1. Attach the keyboard (A08-15, D09). 2. Attach the legs (D06, D07). 3. Attach the keyboard (A08-15).

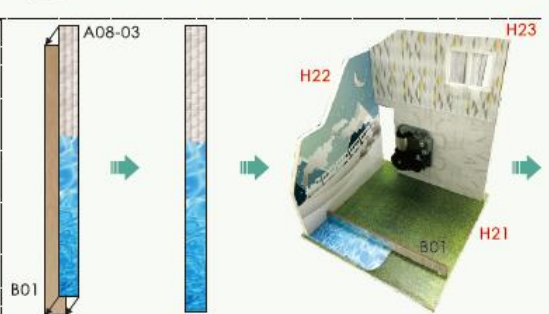
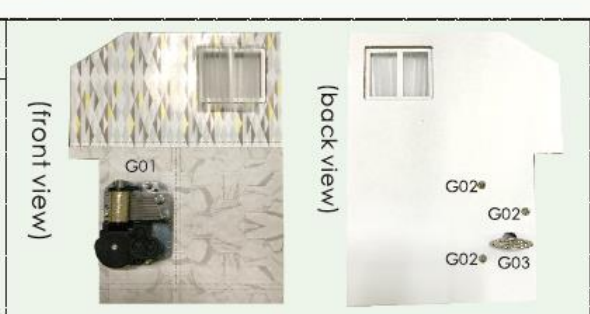
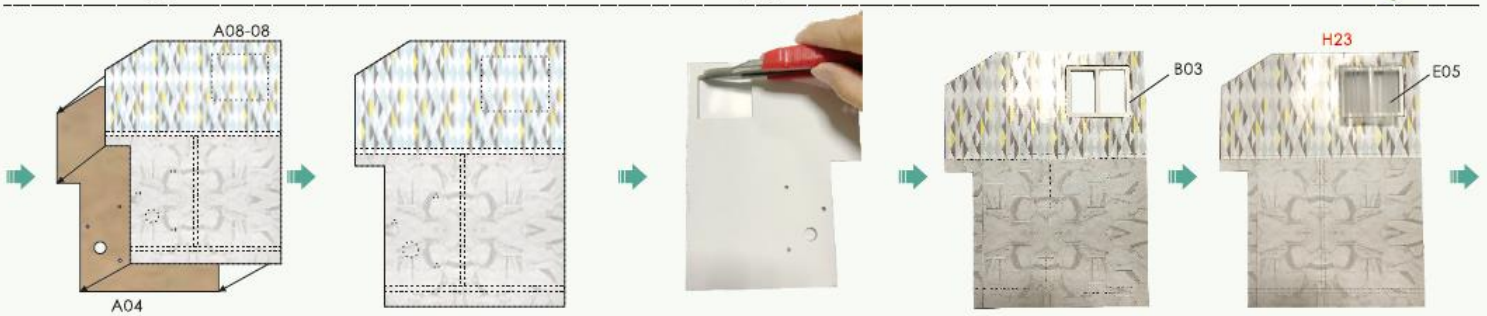
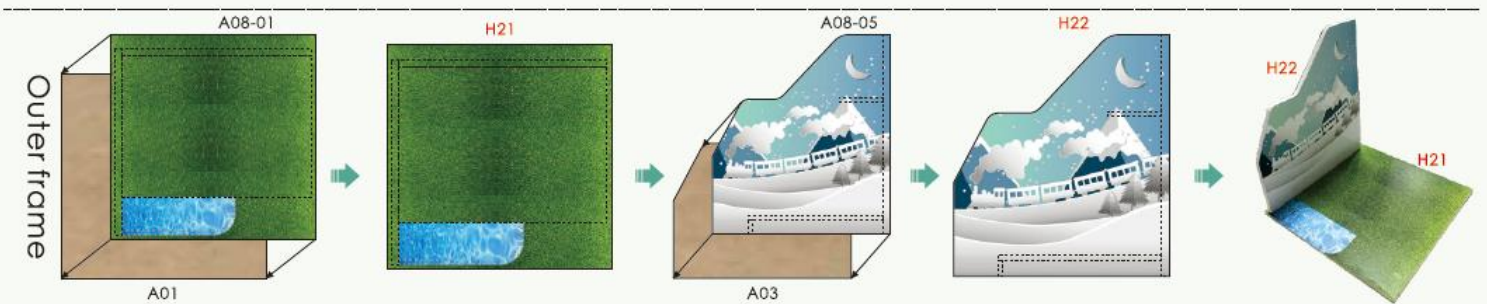
Piano stool

Assembly steps for the piano stool: 1. Assemble the seat (D11, D12). 2. Attach the legs (D11, D12).

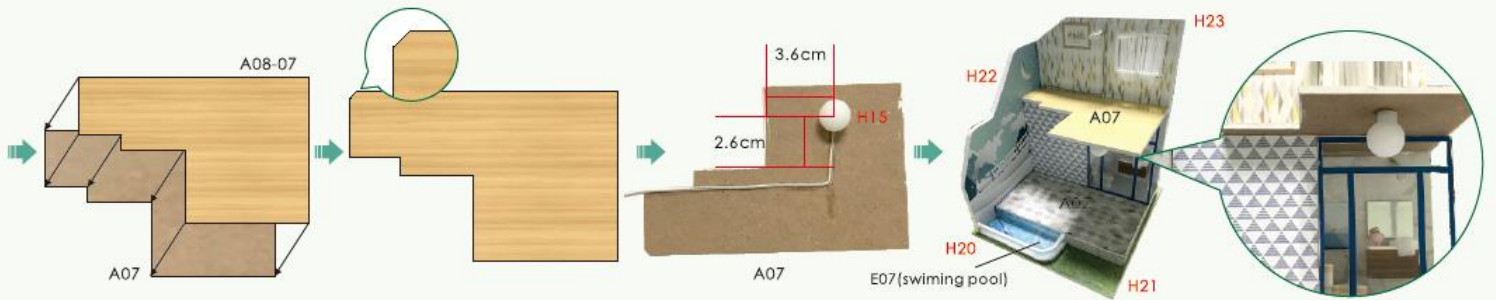
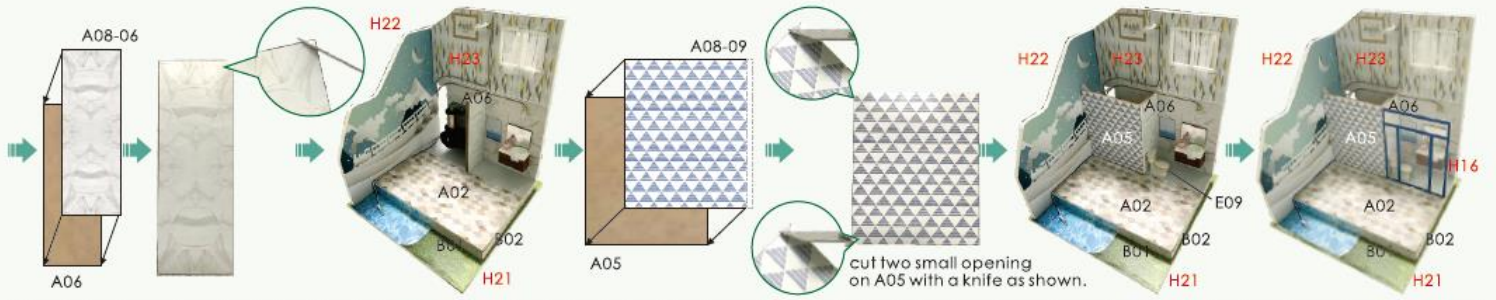
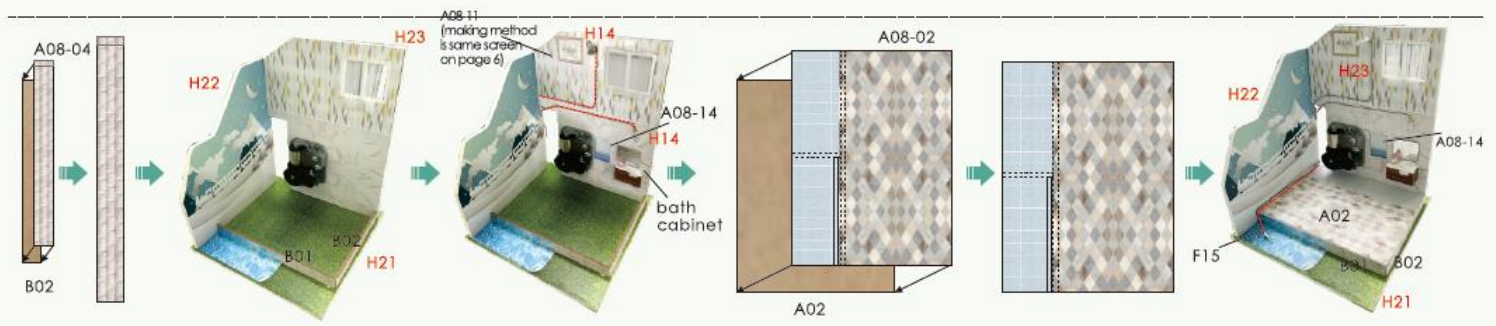
5



6



7



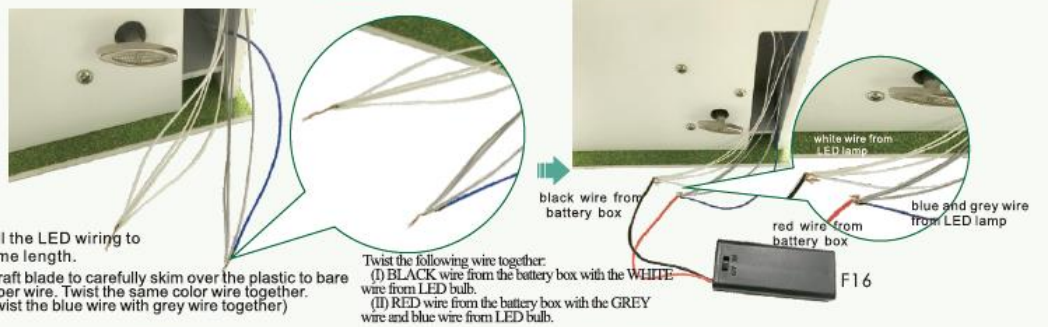
8



How to assemble the battery holder

Statement: the lamp wires cannot be inserted into the output socket.

- Can use 7 batteries
- Please notice the place of anode and cathode when pit in the batteries
- Rechargeable batteries are not blunt electricity
- Rechargeable batteries can only be charged under adult supervision
- Rechargeable batteries should be removed from the toy before charging
- Different types of batteries cannot mix;
- Do not mix new batteries in use with semi-used batteries.
- Run out of battery should be removed from the toy
- The power shall not be short circuit



9

**Installation of dust proof cover
(For updated version, the parts need to be purchased separately)**



scale 1:10
G04 Transparent cover
0.15*14.5*14.5cm
1piece

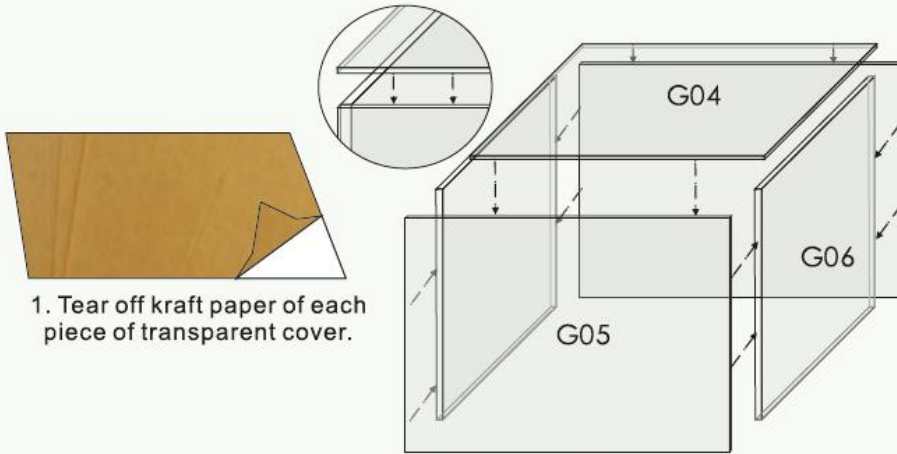


scale 1:10
G05 Transparent cover
0.15*14.5*17.5cm
2pieces



scale 1:10
G06 Transparent cover
0.15*14.5*17.5cm
2pieces

Photo of Dust proof cover



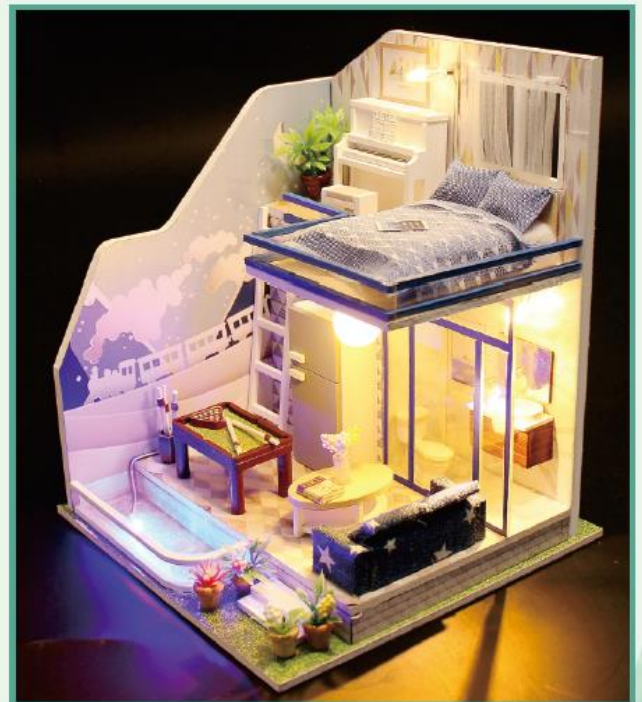
1. Tear off kraft paper of each piece of transparent cover.

2. Paste G04, G05 and G06 together to complete the dust proof cover as shown.



10

Photo gallery



Attention: Please keep the instruction for future enquires after installation.