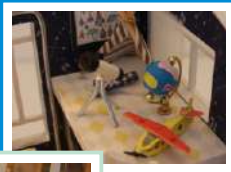


M041

# Shining Star

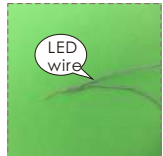


M041 Instruction manual

# NOTICE OF ASSEMBLE

## Making tips

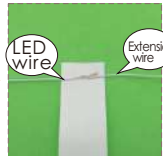
1. LED wiring indication: White=Positive; Grey=Negative.
2. Use a craft blade to carefully skim over the plastic to bare the copper wire.
3. For LED wiring extension, please refer to the below steps:



Twist the copper of both LED wire and extension wire together.



Do the same on the white wire.  
Remarks: Tie a knot at the end of the grey wire to differentiate the polarity.



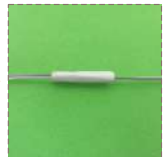
Place the duly twist wire on the tapes provided.



Roll and wrap the wire.



Place another wire next to it.  
Remarks: DO NOT contact both copper wire to avoid short circuit.



Roll and wrap it together.

## Warnings

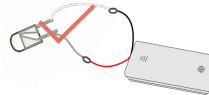
- The product is not suitable for children under 14 years old. The should be under custody of adults when playing with the product.
- There are small parts, please do not swallow them for avoiding dangerous accidents.

## Tips for assembling

1. Pictures shown on the package may be slightly different from the actual product.
2. Please use the provided tracing paper for cutting purpose to achieve the best outcome.
3. Product designs and specification may be subject to change without advance notice for purpose of making improvement.
4. Testing on LED function:



DO NOT contact the LED wire end direct to the battery cell.



Use the provide battery holder. Make sue the correct polarity.

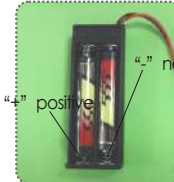
## How to assemble the battery holder



1. Material and tools needed:  
- Battery holder, LED bulb, tape, screw driver and 2 piece AA size battery (not provided)



2. Use screw driver and take the lid off from the battery holder.



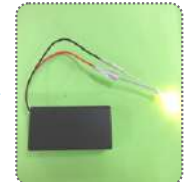
3. Insert the battery take notes on the polarity.



4. Connect the red wire to grey wire. Connect the black wire to white wire.



5. Wrap the exposed wire with the tapes.

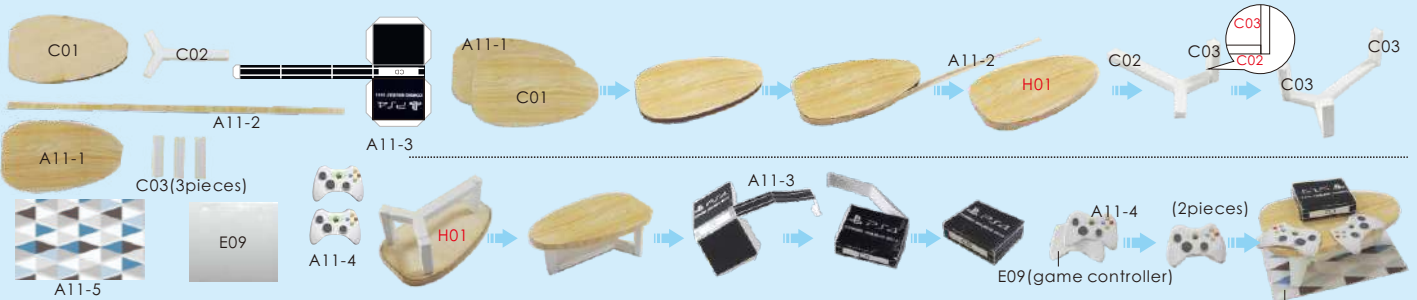


6. Place the box lid and fastness with screw driver.

# Product information

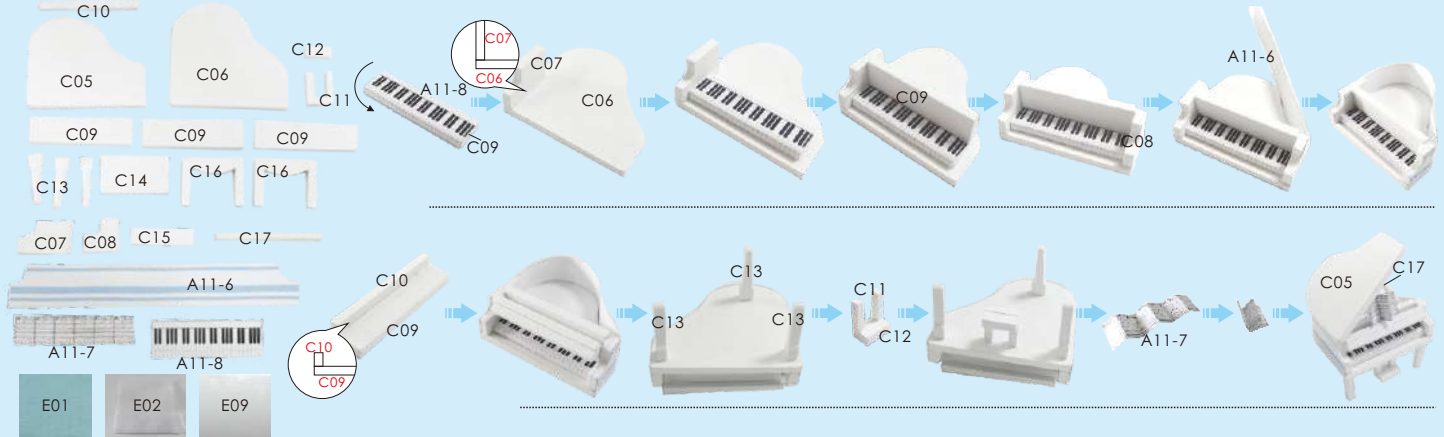


Table

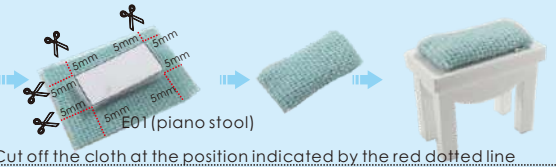


cut out E09 according to the template, attach A11-4 on E09 as shown.

Piano

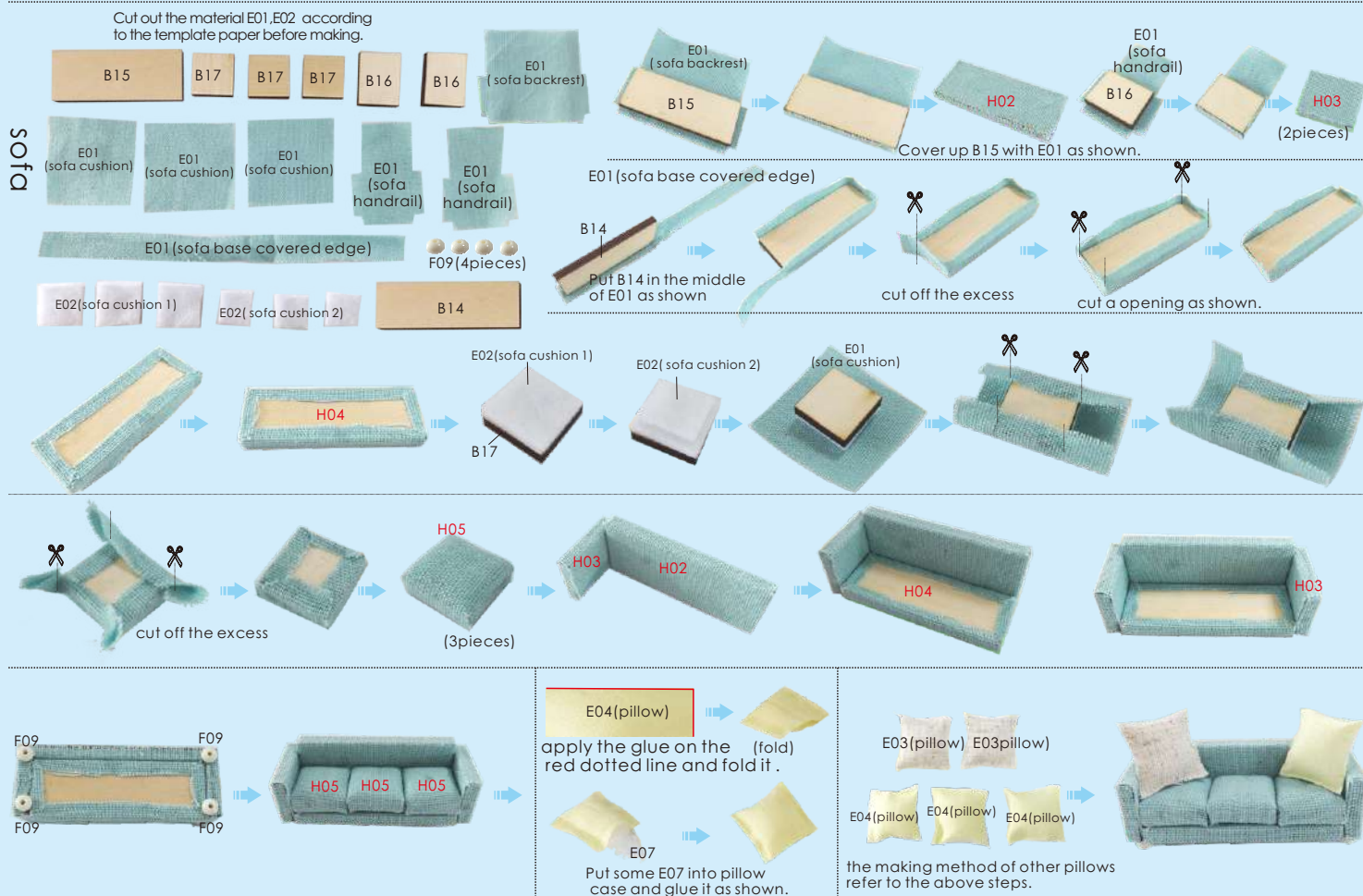


E02 (piano stool)  
Cut out the material E01, E02 and E09 according to the template paper before making.



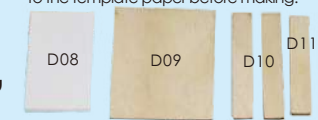
Cut off the cloth at the position indicated by the red dotted line



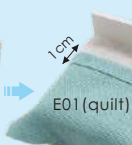
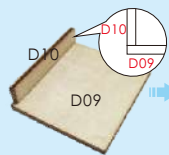


# Bed

Cut out the material E01,E02 according to the template paper before making.



E10:8cm E13:4.5cm F09(2pieces)



fold E01 back 1cm, attach to the bed as shown.



E09(tablet PC)

E13:4cm

(fold)

F09 (bend)

E13:0.5cm

Attach A11-9-1 on E09, and a11-9-2 on the back as shown.

following above steps to make the earphone.

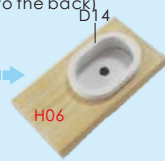
# Bathroom



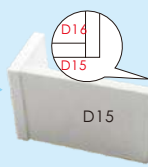
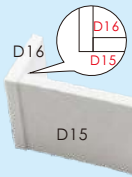
(back view)



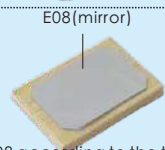
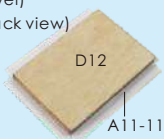
A11-12 (attach to the back)



Carve the opening with a knife.



E02( wash basin towel)  
(back view)



cut out E08 according to the template and attach on A11-1 as shown.

Bicycle fitness equipment

F15 F15 D01 D01 D02 D03 D04 D05 D06 D07

E12:1.6cm E03(carpet)

E12:0.8cm

0.6cm 0.2cm

Make two in the same way.

0.5cm

E03(carpet)

A11-13

cut out E03 according to the template and tear off a few thin lines at the edge as above shown.

Closestool

F18 F18 A11-14 A11-14

Attach A11-14 to F18 and cut off the excess as shown.

Potted plant

F17 F16

Wall deco

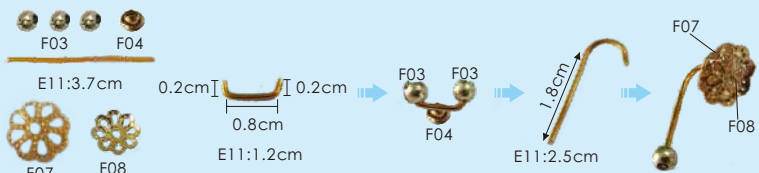
A11-15-1 A11-15-2 E09

E09(wall deco)

Attach A11-15-1 on E09, and then cut out as shown.

Attach E09 on A11-15-2 as above shown.

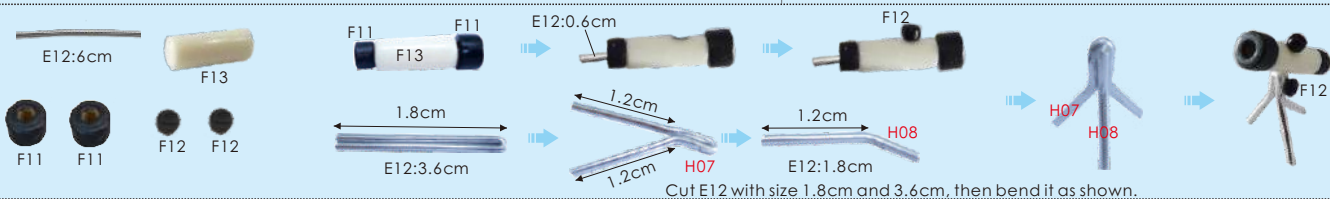
# Shower



# Dumbbell

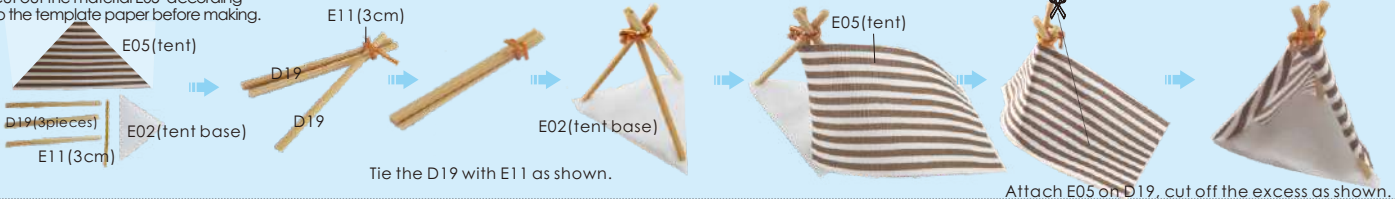


# Telescope



# Tent

Cut out the material E05 according to the template paper before making.

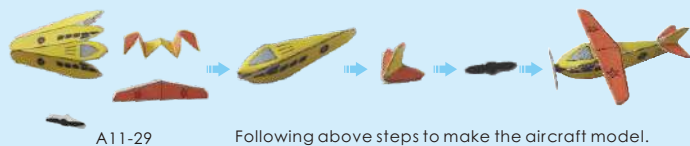


# Slipper

Cut out the material E02, E03 according to the template paper before making.



# Aircraft model



# Scroll painting



# Globe





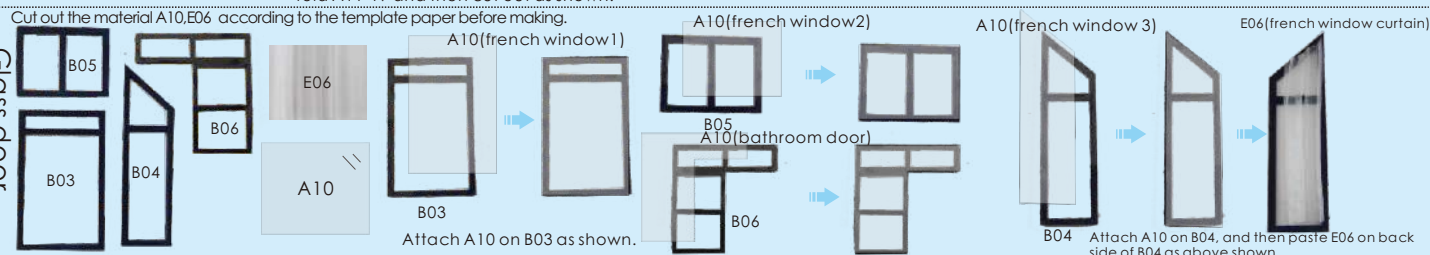
TV wall



fold A11-19 and then cut out as shown.

tear off kraft paper of A09 as shown.

Glass door and window

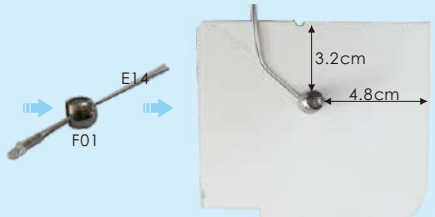
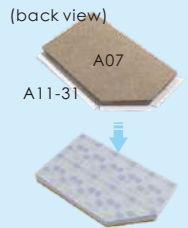
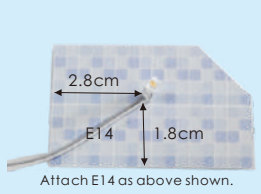
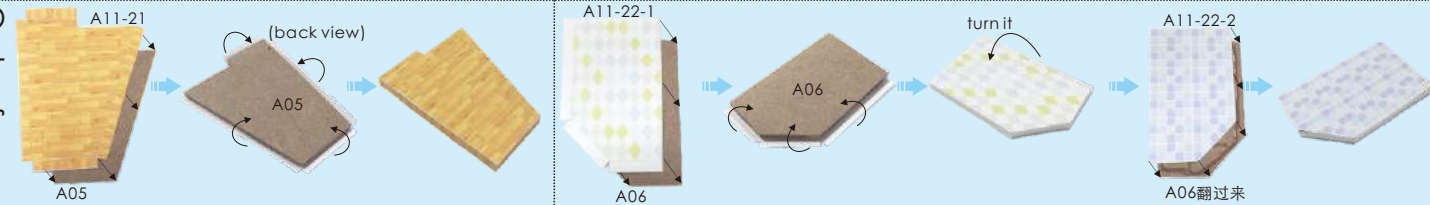


Cut out the material A10,E06 according to the template paper before making.

Attach A10 on B03 as shown.

Attach A10 on B04, and then paste E06 on back side of B04 as above shown.

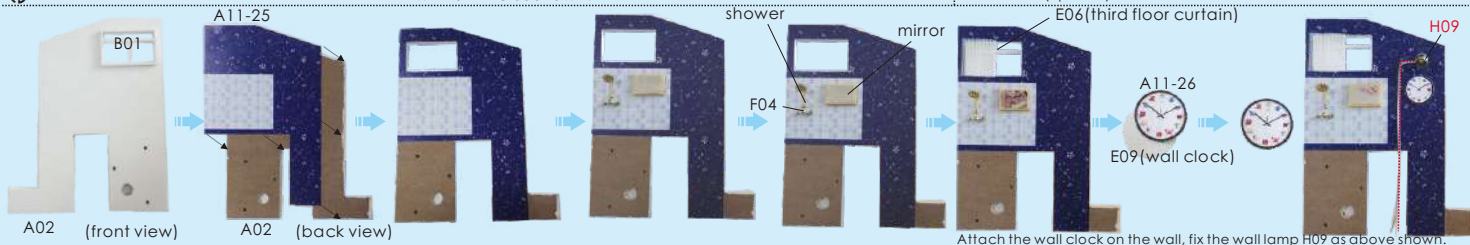
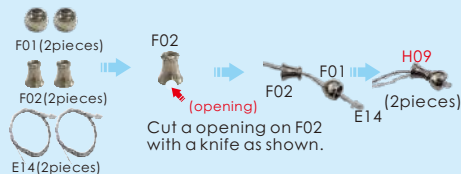
Outer frame



Outer frame



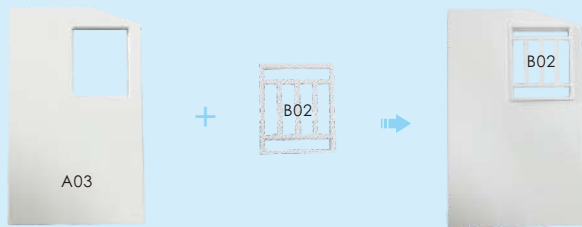
Wall lamp



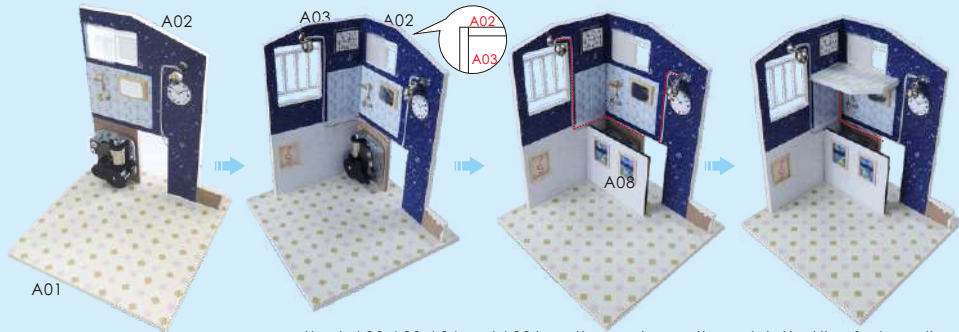
**Music machine core manual guide**  
(If you have purchased the music machine core, please fix it firstly)



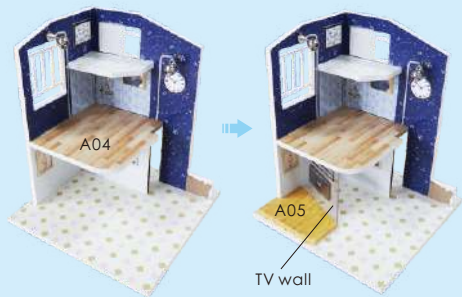
Outer frame



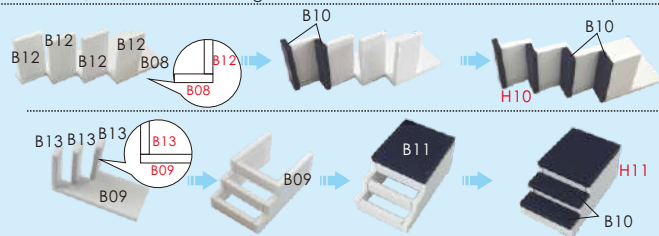
Outer frame



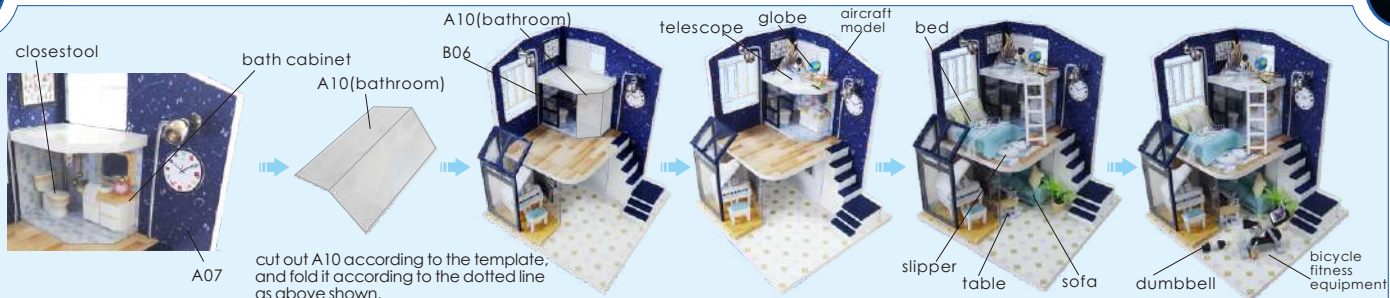
attach A02,A03,A06 and A08 together as shown. the red dotted line for lamp line.



Stairs







cut out A10 according to the template, and fold it according to the dotted line as above shown.

### How to assemble the battery holder

**Statement: the lamp wires cannot be inserted into the output socket.**

- - Can use 7 batteries
- - Please notice the place of anode and cathode when put in the batteries
- - Rechargeable batteries are not blunt electricity
- - Rechargeable batteries can only be charged under adult supervision
- - Rechargeable batteries should be removed from the toy before charging
- - Different types of batteries cannot mix; Do not mix new batteries in use with semi-used batteries.
- - Run out of battery should be removed from the toy
- - The power shall not be short circuit



Trim all the LED wiring to the same length.  
Use a craft blade to carefully skim over the plastic to bare the copper wire. Twist the same color wire together.

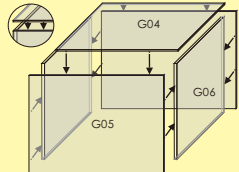
Twist the following wire together:  
(I) BLACK wire from the battery box with the WHITE wire from LED bulb.

Roll and seal the duty twist copper with the white tape E16 provided.  
Place the battery box in the allocated space.  
(II) RED wire from the battery box with the GREY wire and blue wire from LED bulb.

Installation of dust proof cover  
(For updated version, the parts need to be purchased separately)



1. Tear off kraft paper of each piece of transparent cover.



2. Paste G04, G05 and G06 together to complete the dust proof cover as shown.

### Photo of Dust proof cover



**Attention: Please keep the instruction for future enquires after installation.**