

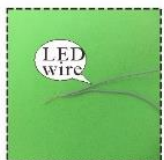
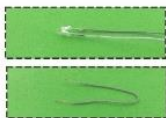
DIY handmade goods— Pink Loft



NOTICE OF ASSEMBLE

Making tips

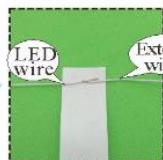
1. LED wiring indication:
White=Positive; Grey=Negative.
2. Use a craft blade to carefully skim over the plastic to bare the copper wire.
3. For LED wiring extension, please refer to the below steps:



Twist the copper of both LED wire and extension wire together.



Do the same on the white wire.
Remarks: Tie a knot at the end of the grey wire to differentiate the polarity.



Place the duly twist wire on the tapes provided.



Roll and wrap the wire.



Place another wire next to it.
Remarks: DO NOT contact both copper wire to avoid short circuit.



Roll and wrap it together.

Warnings

- The product is not suitable for children under 14 years old. The should be under custody of adults when playing with the product.
- There are small parts, please do not swallow them for avoiding dangerous accidents.
- Please also pay attention to the sharp-pointed materials to avoid injuries.

Tips for assembling

1. Pictures shown on the package may be slightly different from the actual product.
2. Please use the provided tracing paper for cutting purpose to achieve the best outcome.
3. Product designs and specification may be subject to change without advance notice for purpose of making improvement.
4. Testing on LED function:



DO NOT contact the LED wire end direct to the battery cell.



Use the provide battery holder. Make sue the correct polarity.

How to assemble the battery holder



1. Material and tools needed:
- Battery holder, LED bulb, tape



2. Twist the following wire together:
(I) GREY wire from the battery box with the WHITE wire from LED bulb.
(II) WHITE wire from the battery box with the GREY wire from LED bulb.



3. Wrap the exposed wire with the tapes.



4. Remove the insulating film from the battery.

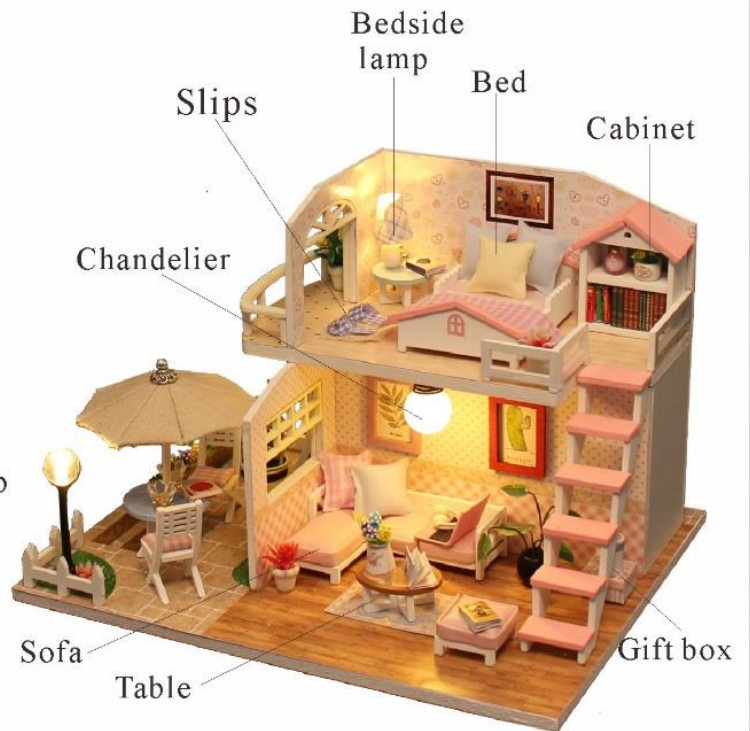


5. Toggle the black button to the "ON" position.



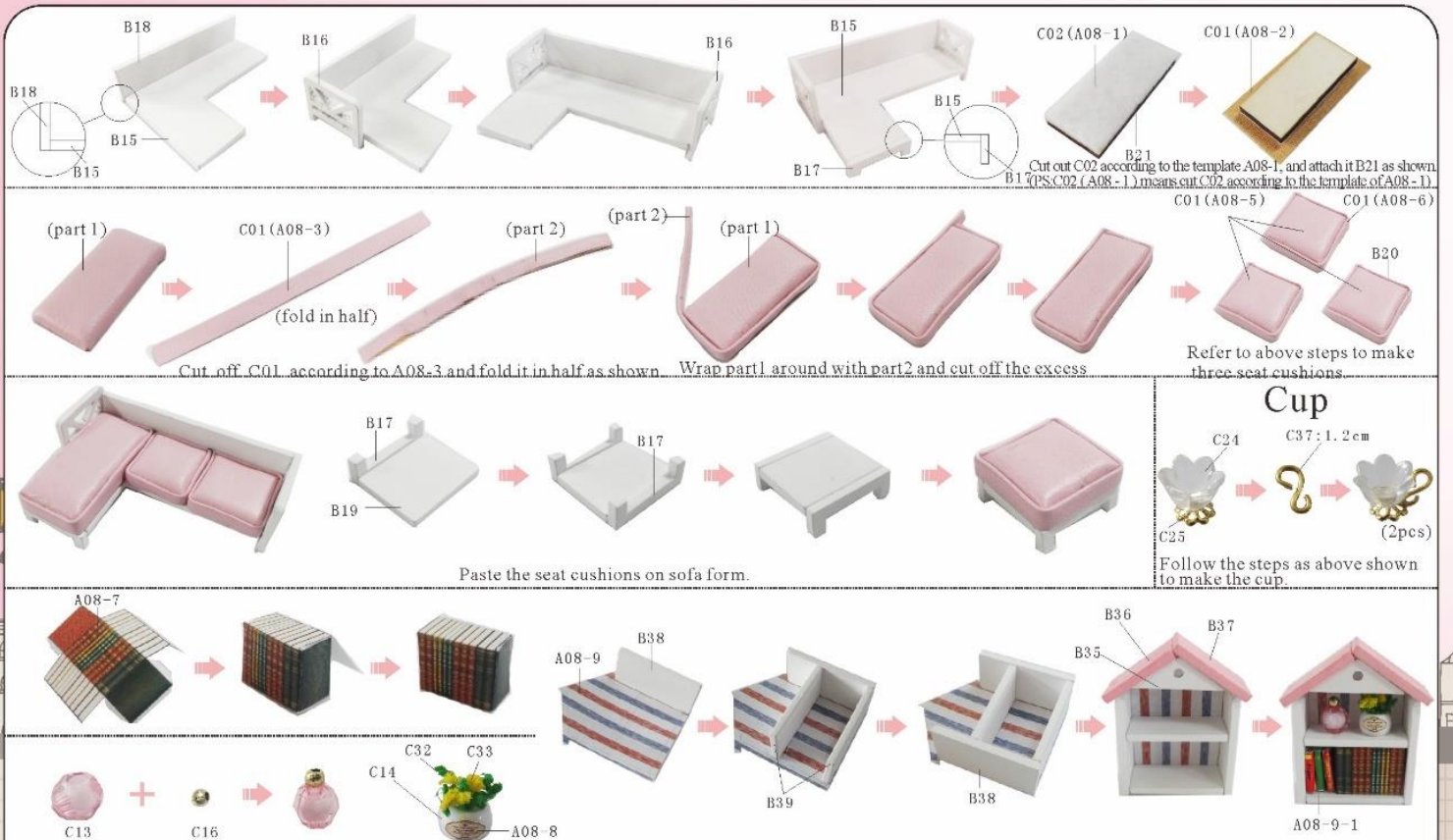
6. Complete the connection of the battery box.

Product information



2

Sofa



3

Table



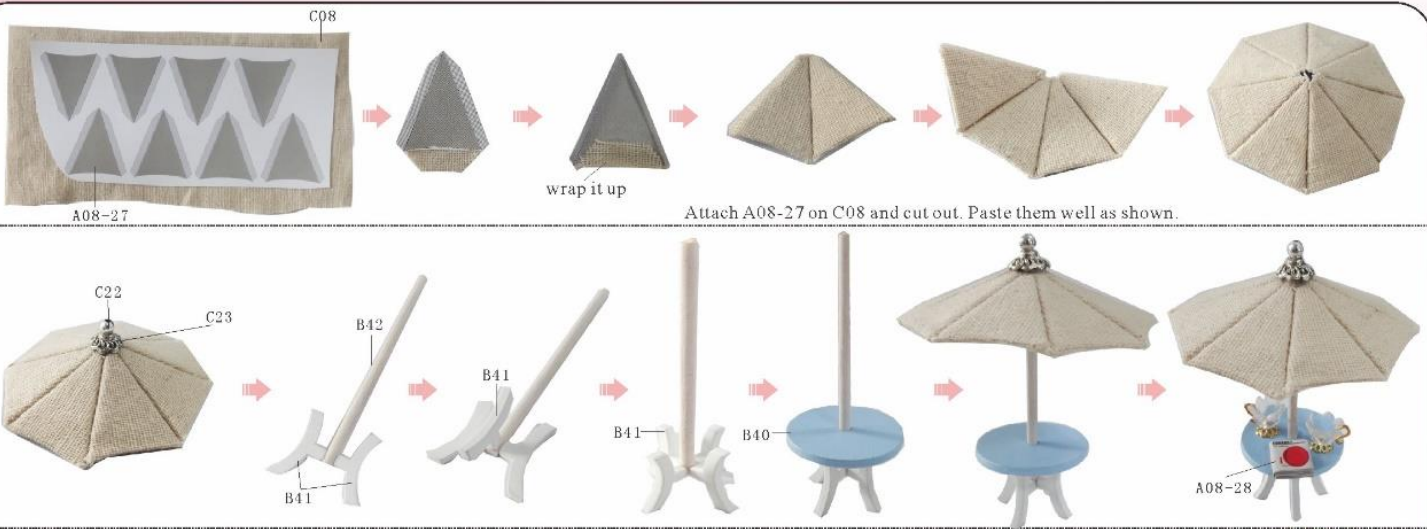
4

Bed

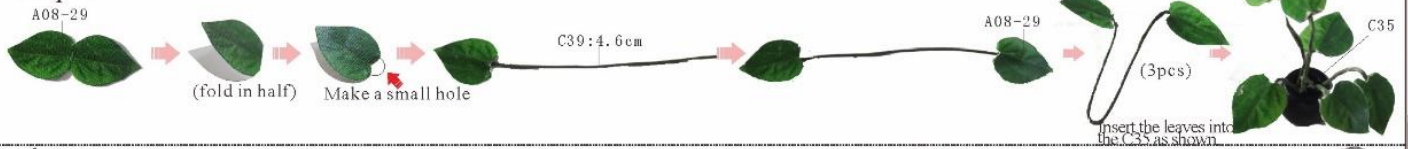


5

Sun Umbrella



Potted plant

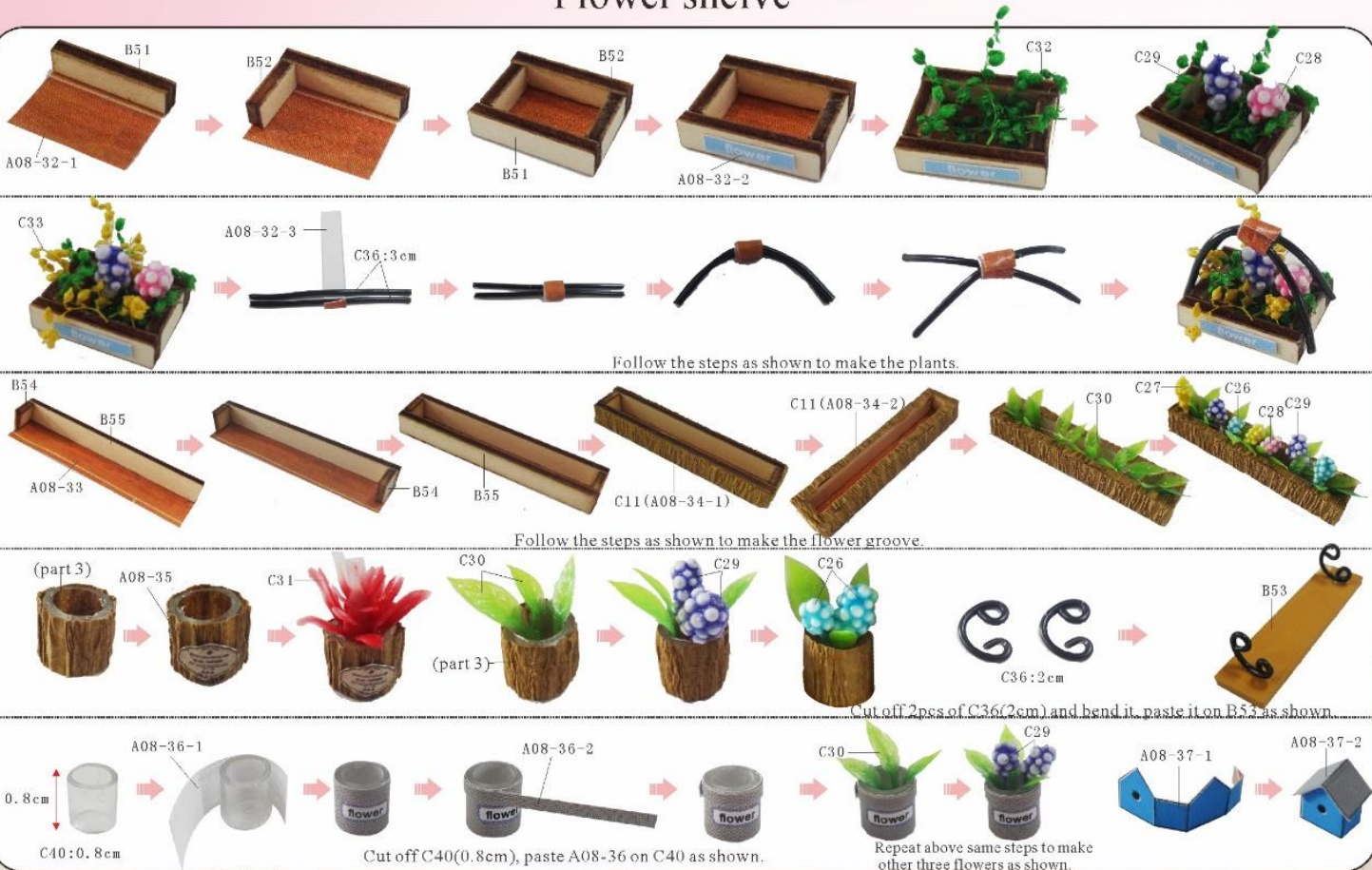


Tools



6

Flower shelf



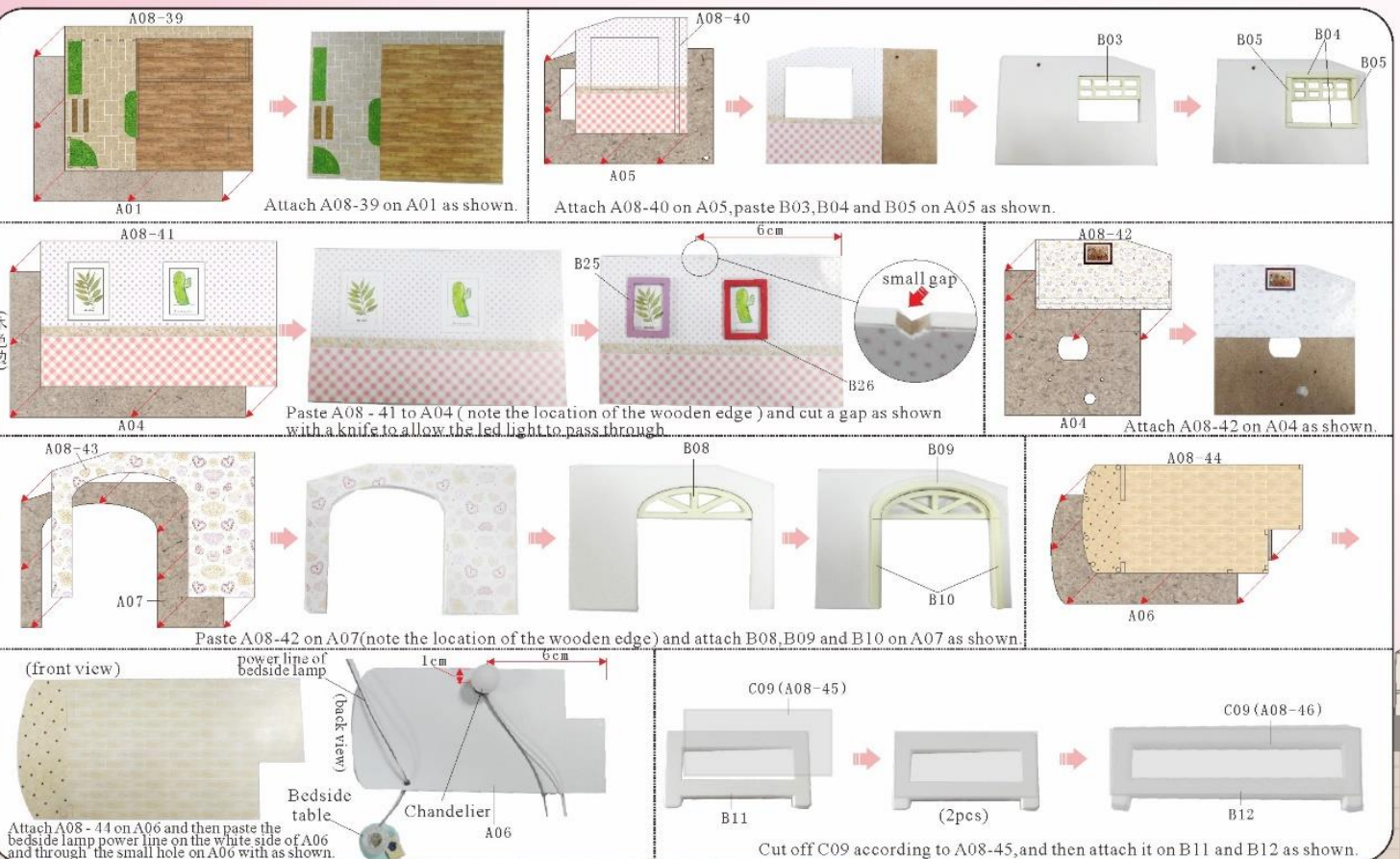
7

Flower shelf



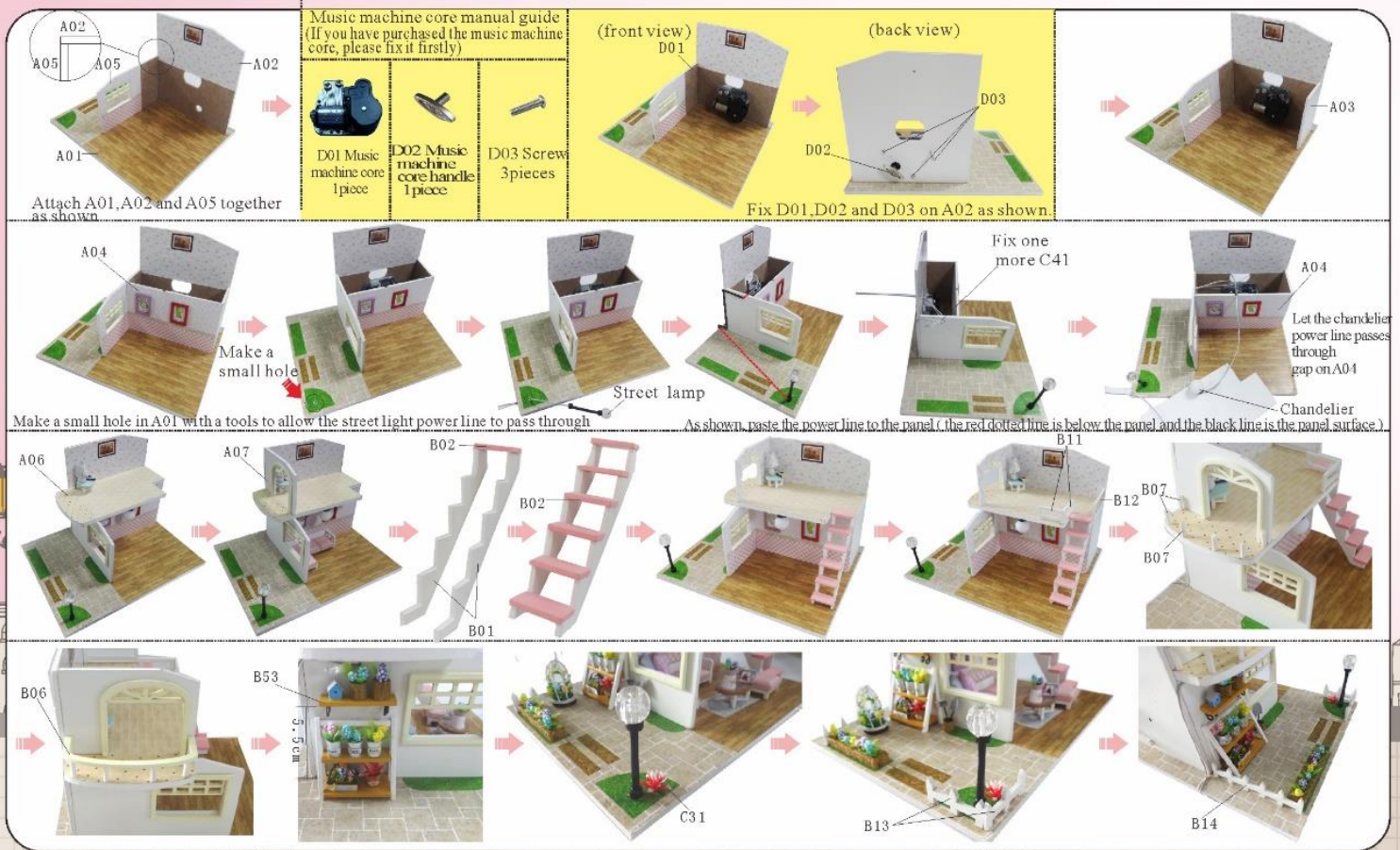
8

Outer frame



7

Outer frame



10

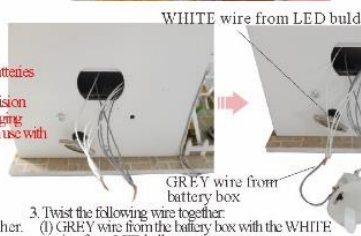


How to connect to battery box

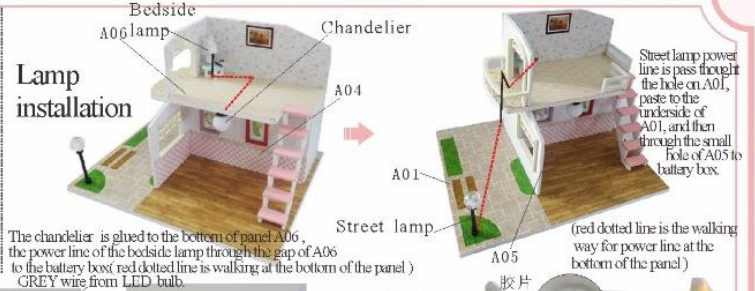
Statement: the lamp wires cannot be inserted into the output socket.

- Please notice the place of anode and cathode when pit in the batteries
- Rechargeable batteries are not blunt electricity
- Rechargeable batteries can only be charged under adult supervision
- Rechargeable batteries should be removed from the toy before charging
- Different types of batteries cannot mix. Do not mix new batteries in use with semi-used batteries.
- Run out of battery should be removed from the toy
- The power shall not be short circuit

1. Trim all the LED wiring to the same length.
2. Use a craft blade to carefully skim over the plastic to bare the copper wire. Twist the same colour wire together.



Lamp installation



Installation of dust proof cover (For updated version, the parts need to be purchased separately)

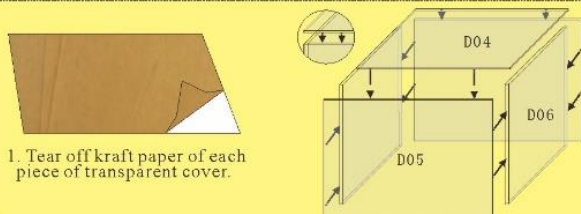


Photo of Dust proof cover



Attention: Please keep the instruction manual for future enquires after installation.