

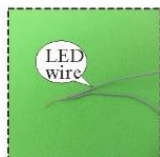
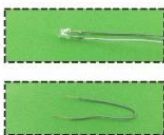
DIY handmade goods- Because of You



Notes before assembling

Making tips

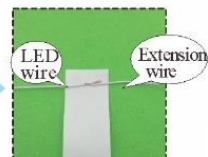
1. LED wiring indication: White=Positive; Grey=Negative.
2. Use a craft blade to carefully skim over the plastic to bare the copper wire.
3. For LED wiring extension, please refer to the below steps:



Twist the copper of both LED wire and extension wire together.



Do the same on the white wire. Remarks: Tie a knot at the end of the grey wire to differentiate the polarity.



Place the duly twist wire on the tapes provided.



Roll and wrap the wire.



Place another wire next to it. Remarks: DO NOT contact both copper wire to avoid short circuit.



Roll and wrap it together.

Warnings

- The product is not suitable for children under 14 years old. The should be under custody of adults when playing with the product.
- There are small parts please do not swallow them for avoiding dangerous accidents.
- Please also play attention to the sharp-pointed materials to avoid injuries.

Tips for assembling

1. Pictures shown on the package may be slightly different from the actual product.
2. Please use the provided tracing paper for cutting purpose to achieve the best outcome.
3. Product designs and specification may be subject to change without advance notice for purpose of making improvement.
4. Testing on LED function:



DO NOT contact the LED wire end direct to the battery cell.



Use the provide battery holder. Make sue the correct polarity.

How to assemble the battery holder



1. Material and tools needed: - Battery holder, LED bulb, tape, screw driver and 2 piece AA size battery (not provided)



2. Use screw driver and take the lid off from the battery holder.



3. Insert the battery take notes on the polarity.



4. Connect the red wire to grey wire. Connect the black wire to white wire.

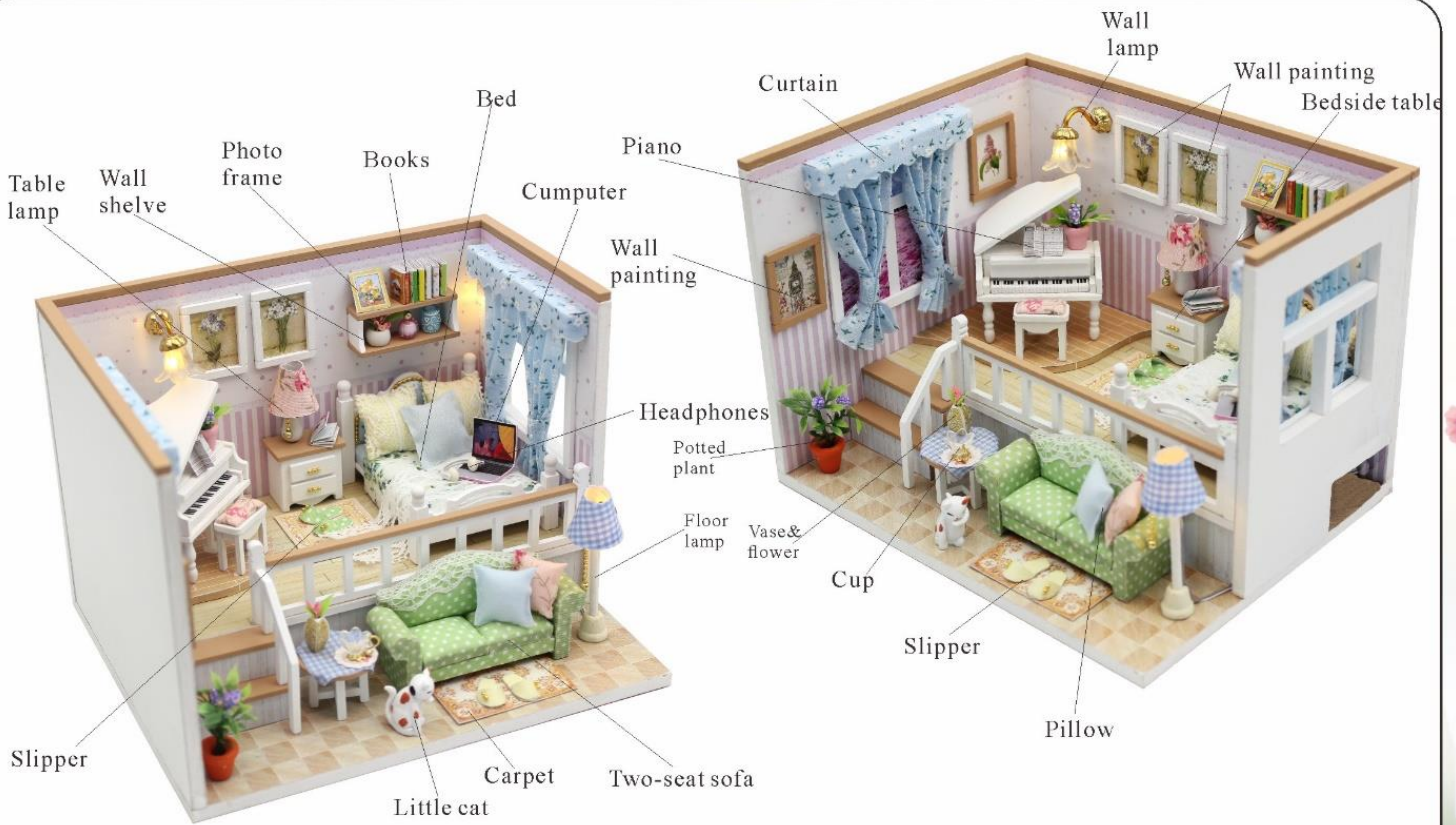


5. Wrap the exposed wire with the tapes.



6. Place the box lid and fastness with screw driver.

Product Introduction



Material Bag A

A01 Wooden board (original) 0.5*13.5*17 (1piece)	A02 Wooden board (white) 0.5*11.5*13 (1piece)	A03 Wooden board (white) 0.5*11.5*17 (1piece)	A04 Wooden board (white) 0.5*8.1*11.5 (1piece)	A05 wooden board (original) 0.3*8.1*15.9 (1piece)	A06 Wooden board (original) 0.3*6.5*6.5 (1piece)	A07 Transparent cover 0.15*13.5*17 (1piece)

		Printing paper A5(4pieces) + Template paper A5(4piece)					
A08 Transparent cover 0.15*11.8*16.5 (1piece)	A09 Transparent cover 0.15*4.7*11.8 (1piece)			B01 Wooden piece (original) 0.2*2.3*12.2 (1piece)	B02 Wooden piece (Beige) 0.3*0.5*13 (1piece)		
B03 Wooden piece (beige) 0.3*0.5*17 (1piece)		B04 Wooden piece (beige) 0.3*0.5*8.1 (1piece)	B05 Wooden piece (beige) 0.2*1.1*4.2 (4pieces)	B06 Wooden bead (white) 0.2*1.8*2.4 (1piece)	B07 Wooden bead (white) 0.3*2.8*4.7 (1piece)	B08 Wooden bead (white) 0.4*0.5*3 (2piece)	
B09 Wooden piece (beige) 0.3*0.4*11.4 (1piece)		B10 Wooden bead (white) 0.3*2.1*11.4 (1piece)		B11 Wooden piece (white) 0.2*0.4*5.9 (1piece)	B12 Wooden piece (white) 0.2*0.4*5.1 (4pieces)	B13 Wooden piece (white) 0.5*0.5*5.1 (1piece)	
B14 Wooden piece (white) 0.5*0.5*3.2 (1piece)	B15 Wooden bead (white) 0.2*3.4*4.6 (1piece)	B16 Wooden bead (white) 0.2*1.7*4.6 (1piece)	B17 Wooden piece (white) 0.2*4.6*6.2 (1piece)	B18 Wooden piece (white) 0.5*0.5*3.5 (2pieces)	B19 Wooden piece (white) 0.5*0.5*2.2 (2pieces)	B20 Wooden bead (white) 0.4*0.4*0.7 (4pieces)	B21 Wooden piece (beige) 0.2*1.6*2.7 (1piece)

Unit:cm

B22 Wooden bead(white) (1piece)0.2*2.2*2.4	B23 Wooden piece(white) 0.2*1.3*2.2(2pieces)	B24 Wooden piece(white) 0.15*0.7*1.8(2pieces)	B25 Wooden bead(white) 0.2*1.2*1.2(2pieces)	B26 Wooden piece(beige) 0.2*1*4(1piece)		B27 Wooden piece(beige) 0.2*1.2*4(1piece)	
B28 Wooden bead(white) 0.2*3.2*4.5(1piece)	B29 Wooden bead(white) 0.2*3.5*4.5(1piece)	B30 Wooden bead(white) 0.2*1.3*3.5(1piece)	B31 Wooden piece(white) 0.2*1.3*2.2(1piece)	B32 Wooden piece(white) 0.2*1.3*1.9(1piece)	B33 Wooden bead(white) 0.2*1.3*1.6(1piece)	B34 Wooden bead(white) 0.2*1.3*1.8(1piece)	B35 Wooden piece(white) 0.2*1.1*1.4(1piece)
B36 Wooden piece(white) 0.2*0.8*4(1piece)	B37 Wooden piece(white) 0.2*0.6*3.6(2pieces)	B38 Wooden piece(white) 0.2*0.4*3.6(1piece)	B39 Wooden piece(white) 0.2*0.4*0.7(2pieces)	B40 Wooden piece(white) 0.2*0.2*1.2(2pieces)	B41 Wooden piece(white) 0.2*0.5*0.8(1piece)	B42 Wooden bead(white) 0.3*0.3*1.7(3pieces)	B43 Wooden piece-round shape (white) ϕ =0.2*2.6(1piece)
B44 Wooden bead(white) 0.2*1.1*2(1piece)	B45 Wooden bead(white) 0.2*1.6*1.8(2pieces)	B46 Wooden piece(white) 0.2*0.3*0.5(2pieces)	B47 Wooden bead(beige) 0.2*2.6*2.6(1piece)	B48 Wooden bead(white) 0.3*1.8*2(1piece)	B49 Wooden bead(white) 0.3*0.9*1.8(2pieces)	B50 Wooden bead(original) 0.3*3.6*6(1piece)	B51 Wooden piece(original) 0.5*2*5(1piece)
B52 Wooden piece(original) 0.4*1.9*2.4(2pieces)	B53 Wooden bead(original) 0.5*2.5*2(2pieces)	B54 Wooden bead(original) 0.6*0.8*2(2pieces)	B55 Wooden piece-round shape (white) ϕ =0.3*5(1piece)		B56 Wooden piece(beige) 0.2*0.3*2.3(8pieces)	B57 Wooden piece(white) 0.2*0.3*2.3(8pieces)	

Material Bag C

C01 Floral cloth(blue) 15*20(1piece)	C02 Cloth (light blue) 7*13 (1piece)	C03 Floral cloth(white) 7*9 (1piece)	C04 Cloth (yellow) 5&7(1piece)	C05 Lace(white) long=10(1piece)	C06 Lace(white) long=10(1piece)
C07 Non-woven fabric (white) 8*9(1piece)	C08 Cloth(green) 11*20(1piece)	C09 Floral cloth(pink) 6*8 (1piece)	C10 Lace(white) long=8(1piece)	C11 Cotton (white) (some)	C12 Plaids(light blue) 6*6(1piece)
C14 Sponge paper(pink) 2*3 (1piece)	C15 Small bead chain (golden)long=14 (1piece)	C16 Plastic bead(golden) (3pieces)	C17 Plastic bead(white) (1piece)	C18 Plastic bead(white) (1piece)	C19 Plastic bead(pink) (1piece)
C20 Plastic bead(color) (1piece)	C21 Plastic bead(white) (2pieces)	C22 Plastic bead(golden) (1piece)	C23 Plastic bead (transparent)(1piece)	C24 Torus(golden) (1piece)	C25 Eyelet(golden) (4pieces)
C26 Plastic flower bead (transparent)(1piece)	C27 Plastic torus(golen) (2pieces)	C28 Iron wire(golden) long=3(1piece)	C29 Thin iron wire (golden) long=35 (1piece)	C30 Iron wire(white) long=6 (1piece)	C31 Wooden bead(milk white) (1piece)
C32 Wooden bead(pink) (1piece)	C33 Wooden bead(orange) (1piece)	C34 Flower bud(purple) (2pieces)	C32 Wooden bead(pink) (1piece)	C33 Wooden bead(orange) (1piece)	C34 Flower bud(purple) (2pieces)

C35 Artificial plant (green)(1piece)	C36 Dried flower(pink) (some)	C37 Little cat(white) (1piece)	C38 LED lamp with wire (3piece)	C39 Battery holder (black) (1piece)	C40 Adhesive paper (white) (1piece)	C41 Sandpaper (1piece)

Bed

Cut off C13 according to A10-1

Cut off C07 according to A10-2-1

Cut off C07 according to A10-2-2

Cut off C01 according to A10-3

C15: 7cm

Follow above steps as shown in diagram to make the bed back rest.

C06: 10cm

Attach B15, B16 and B17 together as shown.

Fold A10-4 to a box as shown, cover it up C02 to make the mattress

Cut off C02 according to A10-5 (mattress)

Cut off C03 according to A10-6

Paste the mattress on the bed foram as shown.

Attach B18, B19 and B20 together as shown. Paste them to bed foram. Attach C03 on the head as shown.

Cut off C04 according to A10-7

C11

C05: 5cm

Cut off C04 according to the template of pillow A10-7, apply the glue according to the red lines as shown. Fold the cloth in half, insert some cotton C11 to C04 as shown. Remove the excess cotton. Apply the glue on the top and fix it as shown. Cut off C05(5cm) and paste it on C04 as shown, the pillow is done.

Repeat above same steps to four other four pillows.

Two seat-Sofa

Cut off C08 according to A10-11

Attach C08 on two sides.

Cut off C08 according to A10-12

Attach B53 to B54 as shown. Paste C08 on two sides as shown.

Cut off C08 according to A10-12 and attach it to combination as shown. Cut off the excess cloth as shown.

Make two pieces of sofa armrest.

Cut off C07 according to A10-13-1

Cut off C07 according to A10-13-2

Cut off C08 according to A10-14

Paste two pieces of C07 on B50 as shown.

Cut off C08 according to A10-15

Cover up B50 with C08 as shown. Cut off the excess C08; Cut off B50 according to A10-15 and attach it to B50 as shown.

Attach C10 on the back of sofa as shown.

The back of sofa

Cut off C08 according to A10-16

The back of sofa

Attach C08 on B51 as shown.

Paste B51 on B50 as shown.

Paste armrest to combination as shown.

Cut off C07 according to A10-17-1

Cut off C07 according to A10-17-2

Cut off C08 according to A10-18

seat cushion

Attach the seat cushion to combination to finish the sofa as shown.

Follow the steps as shown in diagram to make two seat cushion as shown.

Piano

Follow above steps as shown to make the piano.

Cut off C07 according to A10-21-2
Attach C07 on C13, cover up C07 & C13 with C09 as shown.

Cut off C13 according to A10-21-1
Cut off C09 according to A10-21-3

Cut off C35 for two pieces and insert them to C32, paste C34 to C35 to complete the potted plant as shown.

Computer
Attach A10-22 on C14 and fold it half, use a knife to draw a line on it to complete computer as shown.

2cm
C30: 4cm
bend it according to A10-23
C21
C36: 1.5cm

Follow above steps as shown in diagram to make the bedside table.

Cut off a piece of C29 (6cm) and bend it as shown.

Insert C29 to C17 as shown.

Cut off C09 according to A10-25-1
A10-25-2
Attach C09 on A10-25-2 and make the lampshade as shown.
Paste lampshade to C29 as shown to finish the lamp.
cut off C12 according to A10-26

Follow above steps as shown to make the little table.

Attach C23 to C24 as shown. Cut off a piece of C29 (1.2cm) and bend it as shown, paste it on C23 and C24.

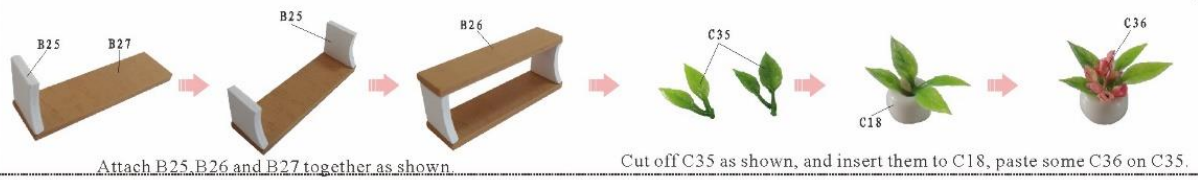
Follow above steps as shown in diagram to the vase.

Slippers
Attach C08 on C13 as shown.
Follow above steps as shown in diagram to make the slipper.

For the lampshade making method, please refer to above desk lamp.

Follow above steps as shown in diagram to make the floor lamp.

Wall shelf



Attach B25, B26 and B27 together as shown.

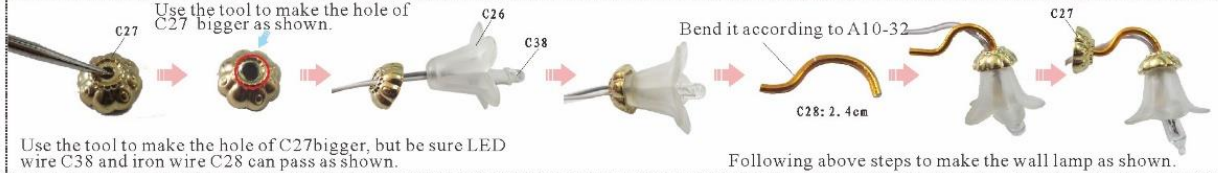
Cut off C35 as shown, and insert them to C18, paste some C36 on C35.



Follow above steps as shown in diagram to make the frame.

Fold A10-30 in a "Z" form according to the lines to make the book. (all books making method are same.)

Wall Lamp



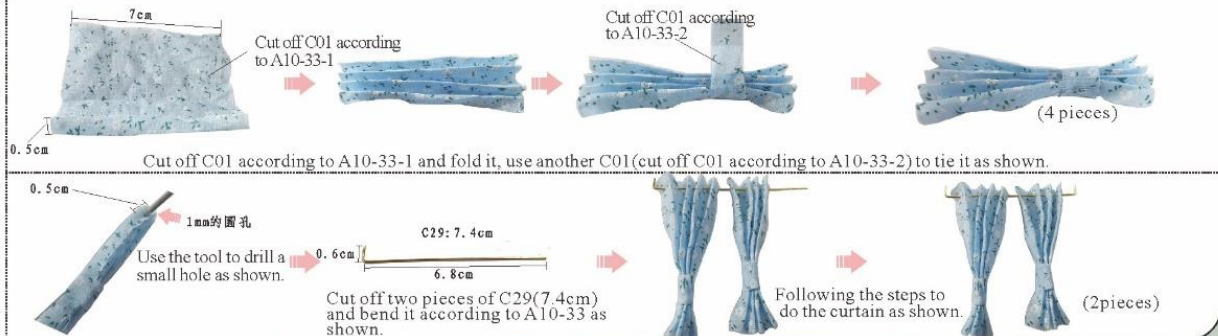
Use the tool to make the hole of C27 bigger as shown.

Bend it according to A10-32

Use the tool to make the hole of C27 bigger, but be sure LED wire C38 and iron wire C28 can pass as shown.

Following above steps to make the wall lamp as shown.

Curtain



Cut off C01 according to A10-33-1

Cut off C01 according to A10-33-2

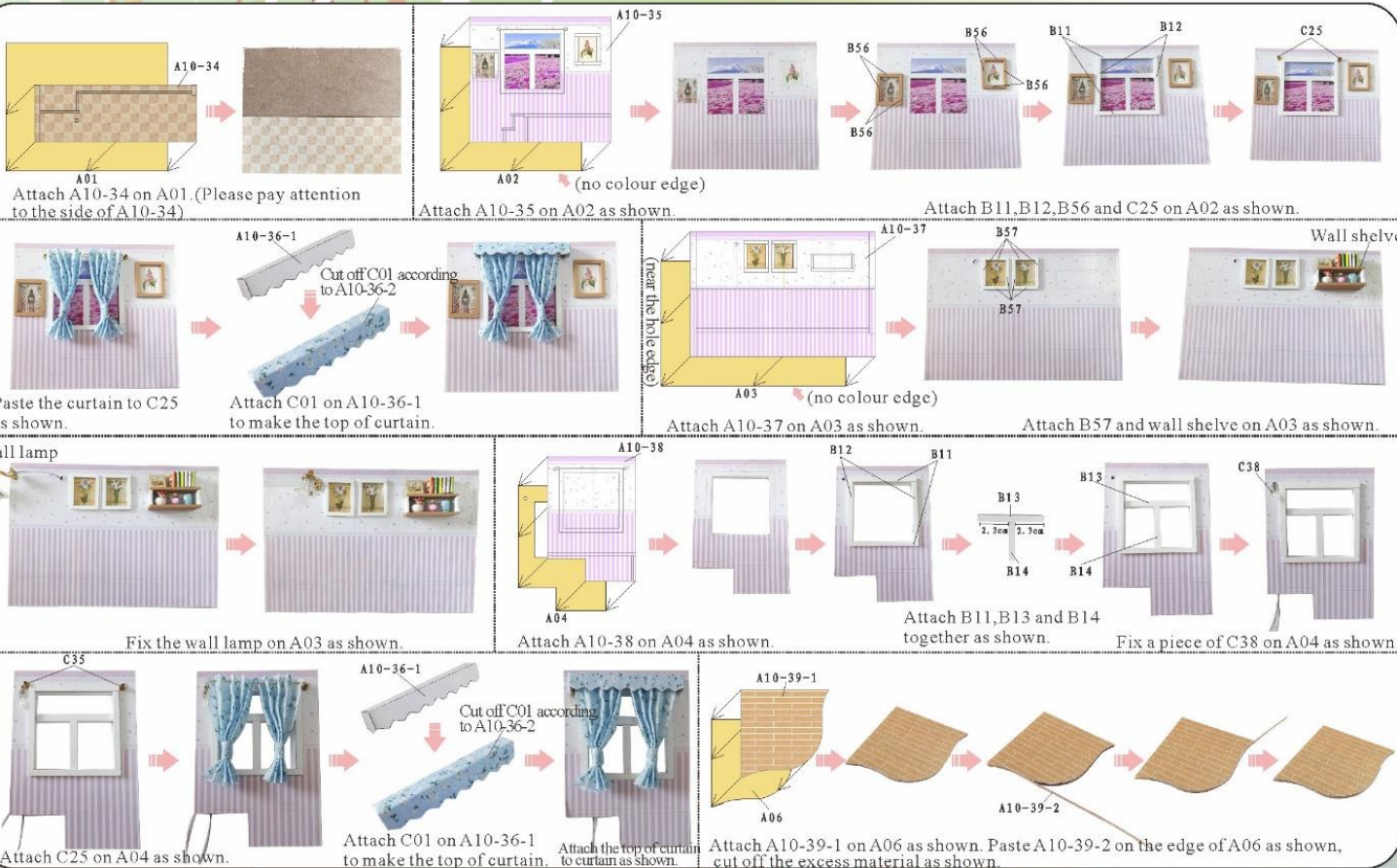
Cut off C01 according to A10-33-1 and fold it, use another C01 (cut off C01 according to A10-33-2) to tie it as shown.

Use the tool to drill a small hole as shown.

Cut off two pieces of C29 (7.4cm) and bend it according to A10-33 as shown.

Following the steps to do the curtain as shown.

Outer Frame



Attach A10-34 on A01. (Please pay attention to the side of A10-34)

Attach A10-35 on A02 as shown.

Attach B11, B12, B56 and C25 on A02 as shown.

Paste the curtain to C25 as shown.

Attach C01 on A10-36-1 to make the top of curtain.

Attach A10-37 on A03 as shown.

Attach B57 and wall shelf on A03 as shown.

Wall lamp

Fix the wall lamp on A03 as shown.

Attach A10-38 on A04 as shown.

Attach B11, B13 and B14 together as shown.

Fix a piece of C38 on A04 as shown.

Attach C25 on A04 as shown.

Attach C01 on A10-36-1 to make the top of curtain.

Attach the top of curtain to curtain as shown.

Attach A10-39-1 on A06 as shown. Paste A10-39-2 on the edge of A06 as shown, cut off the excess material as shown.

Outer Frame

A10-40

(dotted line on A10-40)

Use a stool to cut a gap as shown.

Attach A10-40 on B01, use a stool to cut a gap as shown (please pay attention to the side of dotted line on A10-40)

A10-41

Attach A10-41 on A05 as shown.

Music machine core manual guide
(If you have purchased the music machine core, please fix it firstly)

D01 Music machine core (1set)

Paste the music movement on A05 where there is a hole for it as shown. Fix handle & 3 pieces of screw on the back on the wall as shown.

A06

Attach B06 well as shown.

A10-42

Attach A10-42 on B05 as shown (two pieces)

B05

Attach B05 well as shown.

B10

Attach B07, B08, B09 and B10 to combination as shown.

B08

B09

B07

(gap)

Fix the floor lamp on the board as shown.

(floor lamp)

A10-43

C37

A10-44

C35

C34

C33

Follow above steps as shown to make the potted plant.

Lamp wiring installation drawing



Statement: the lamp wires cannot be inserted into the output socket.

How to connect to battery box

- Can use 5 batteries
- Rechargeable batteries should be removed from the toy before charging
- Please notice the place of anode and cathode when pit in the batteries
- Different types of batteries cannot mix;
- Rechargeable batteries are not blunt electricity
- Do not mix new batteries in use with semi-used batteries.
- Rechargeable batteries can only be charged under adult supervision
- Run out of battery should be removed from the toy
- The power shall not be short circuit



1. Trim all the LED wiring to the same length.
2. Use a craft blade to carefully skim over the plastic to bare the copper wire. Twist the same colour wire together.
3. Twist the following wire together:
 - (I) BLACK wire from the battery box with the WHITE wire from LED bulb.
 - (II) RED wire from the battery box with the GREY wire from LED bulb.
4. Roll and seal the duly twist copper with the white tape provided. Place the battery box in the allocated space.

Installation of dust proof cover

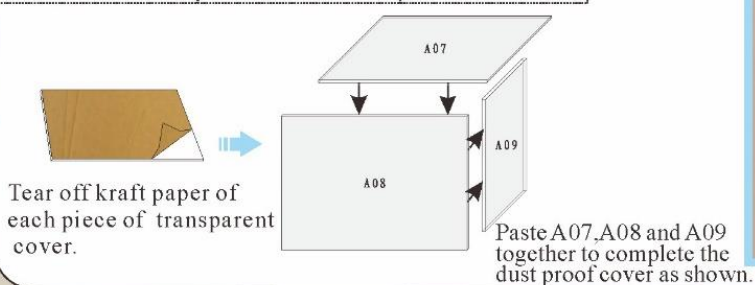


Photo Gallery



.14.

Attention: Please keep the instruction for future enquires after installation.