

Poems and Dreams



L902 Instruction manual

NOTICE OF ASSEMBLE

Tips for assembling

1. Pictures shown on the package may be slightly different from the actual product.
2. All the materials are taken in the operation step, put the remaining materials back into the original pocket until the installation is completed. (Avoid material loss during installation)
3. The dimensions indicated in the step diagram are "cm".
4. If there have template paper material, please cut the material according to the template to avoid mistakes.
5. According to the part rule example at the bottom of this page, refer to the part on the part number drawing, find the material object and compare with the material list, confirm and install. (Wooden parts only)
6. Glue should not be applied too much, so as not to dry longer, overflow will affect the effect of the finished product.
7. Part shapes may differ from the photographs depending on the production batch

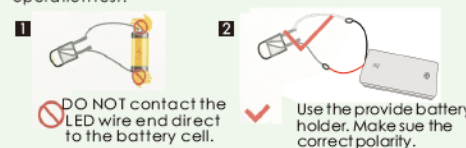
Product comes with tool:



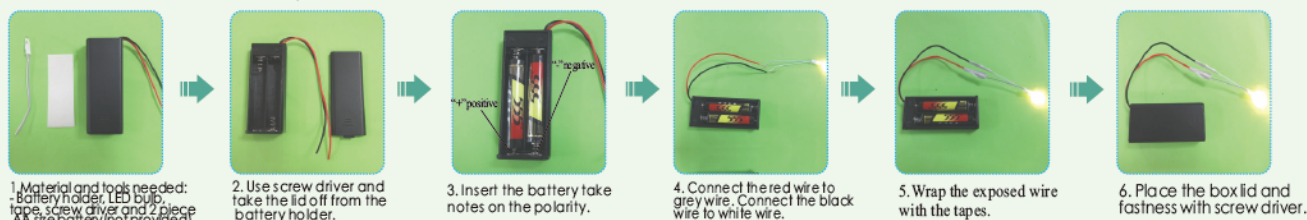
Bring your own tools:

Testing on LED function

Be sure to test the LED lights before making the lighting, note that the LED white wire to the negative, gray wire to the positive reference to the following figure operation test.



How to assemble the battery holder



Example of parts rule:

A01: The parts are directly in the box.; B01: parts in bag B; C01: part in bag C, and so on.
(Note: display the printing paper A16-01 in the step: the printing paper is placed directly in the box, part number is A16-01)

details of miniature kit

Name	Material package
Printing paper	Bag A-A14(All printing and template papers are shown on A16 paper, total 36 pieces of A3 and 1 piece A4)
Toilet	bag A + bag D+printing paper
Hot spring pool	bag A + bag D+printing paper
Water basin	bag D+ printing paper
Hanger	bag D+bag G
Boat	bag A + bag E+printing paper
Chessboard	bag E+bag J+printing paper
Tea table	bag E+bag J+bag G+bag L
Mahjong table	bag E+printing paper
Mahjong chair	bag E
Bed	bag E+bag G+printing paper
Landing hanger	bag E+bag G+printing paper
Chinese zither	bag F+bag G+bag K
Chinese zither stool	bag F
Virtus shelf	bag F+bag G+bag J+bag L
Hot pot table	bag F+bag G+bag J +bag K+ printing paper
Single chair	bag F
Double bench	bag F
Storage rack	bag F+bag K+bag L+printing paper
Pines potted	bag G+bag K+bag L
Orange potted plant	bag J+bag K+bag L
Lantern	bag G+bag J+bag K
Round stool	bag J+printing paper
Wall lamp	bag K+L bag
Left house	bag A + B bag+C bag+printing paper
Right house	bag A+bag B+bag C+printing paper

Welcome to the little DIY world, now come with me!



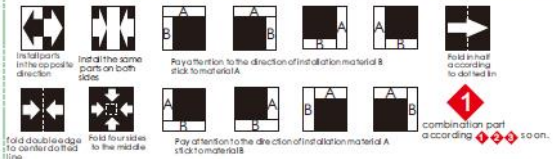
Thumbnail of material list (reference only)



Thumbnail of printing paper & template paper (reference only)



Symbol description used



2

2

please follow me slowly!

Toilet

D01, D02, D03, D04, D05, D06, D07, A20 (toilet roof), A20 (toilet roof), A16-34, D02, D03, D05, A20 (toilet roof), D04 (2 pieces)

Bridge

D01, D06 (corner step 1), D07 (corner step 2), D07 A20 (3 pieces), A21 (bridge), D12, D12, D12, A21 (bridge), D12, D12

Hot spring pool

D13, A16-36, A16-35, A16-38, A16-37, A16-36 (cut out), D13, A16-36 (back view), A16-37, A16-38

Water Basin

A16-38 Paste it from here, A16-38, A16-35, A22 (hot spring pool), D14, D15, A16-22, A16-22, D14, D15

Hanger

Boat

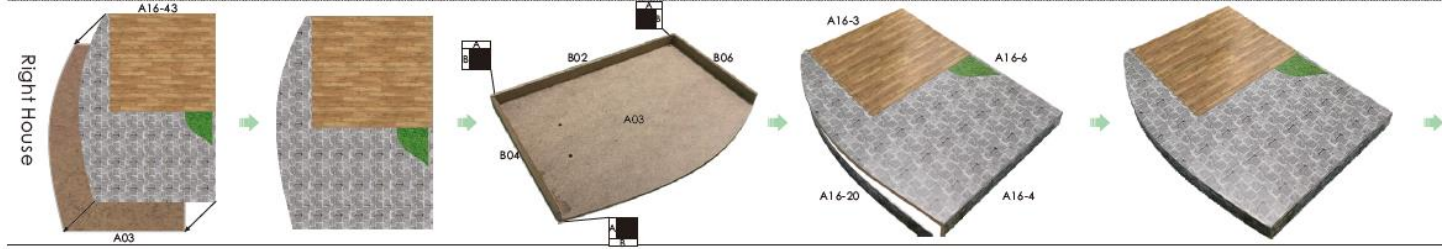
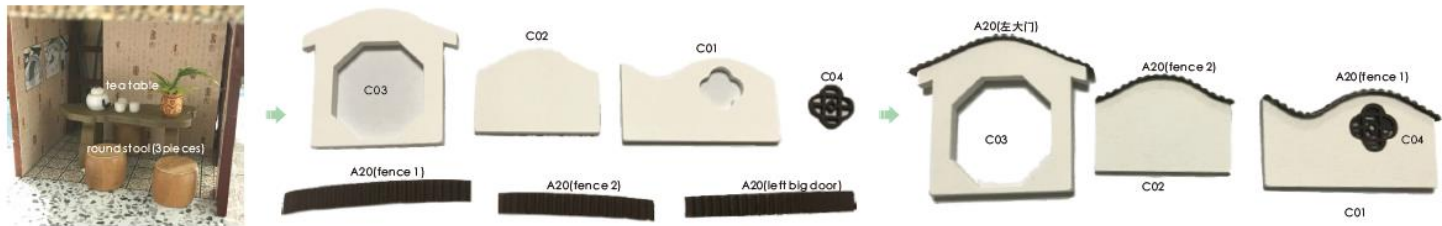
D16, D17, G03, D16, G03, A21 (boat), E01, E02, E03, A21 (boat), E01, E02, E03

Chessboard

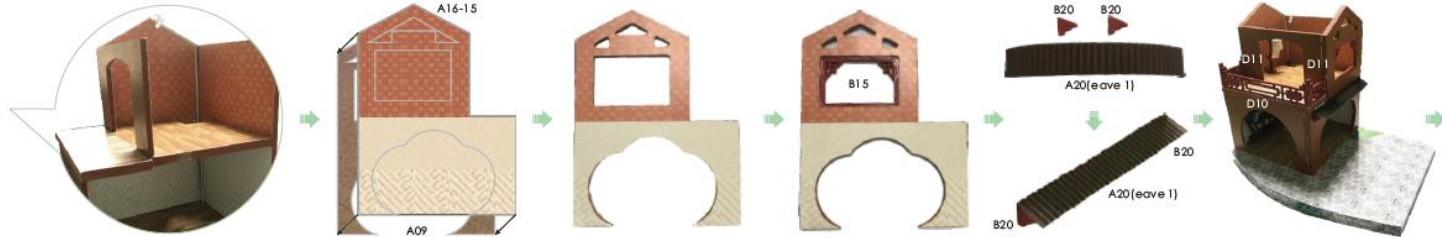
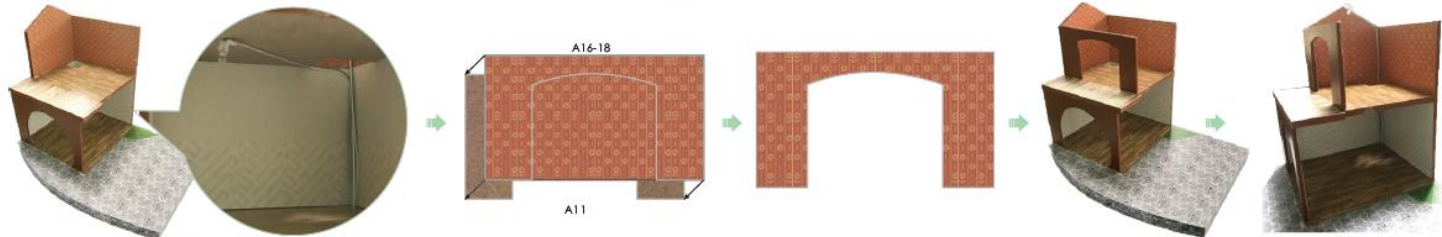
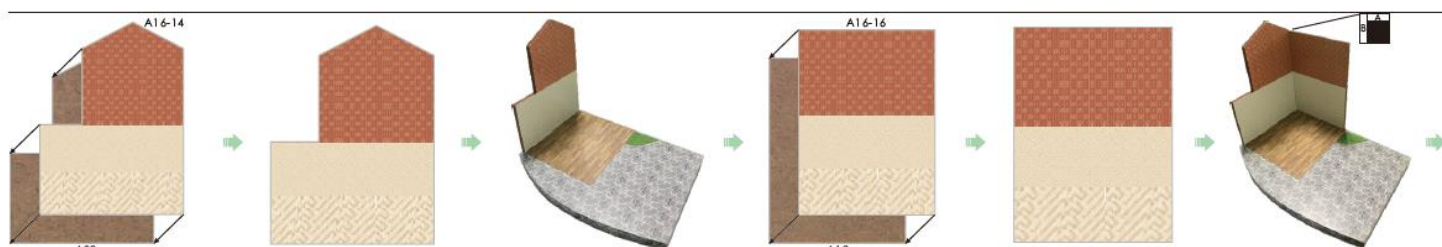
A21 (boat), A16-12, J05, J05, J03, E04, A16-13, E05, A16-12, E04, A16-13, J05, A16-13 (2 pieces), J03

As shown, the G03 can be folded at will.

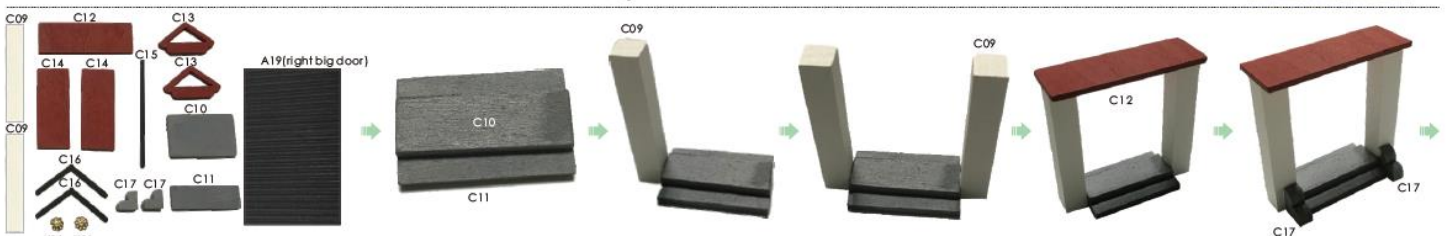
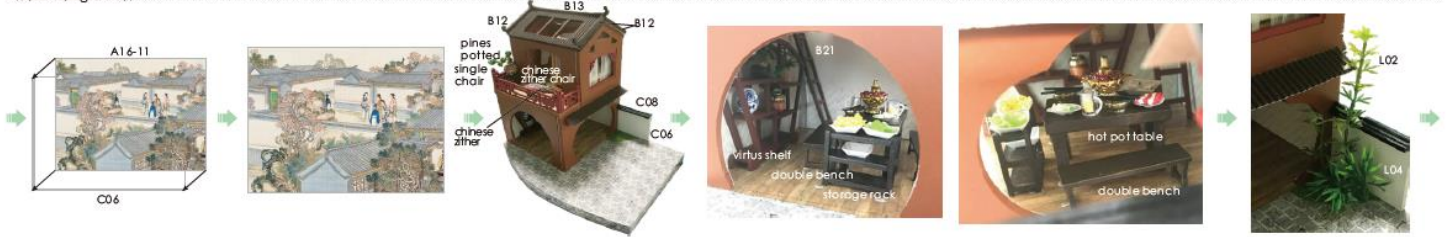




8



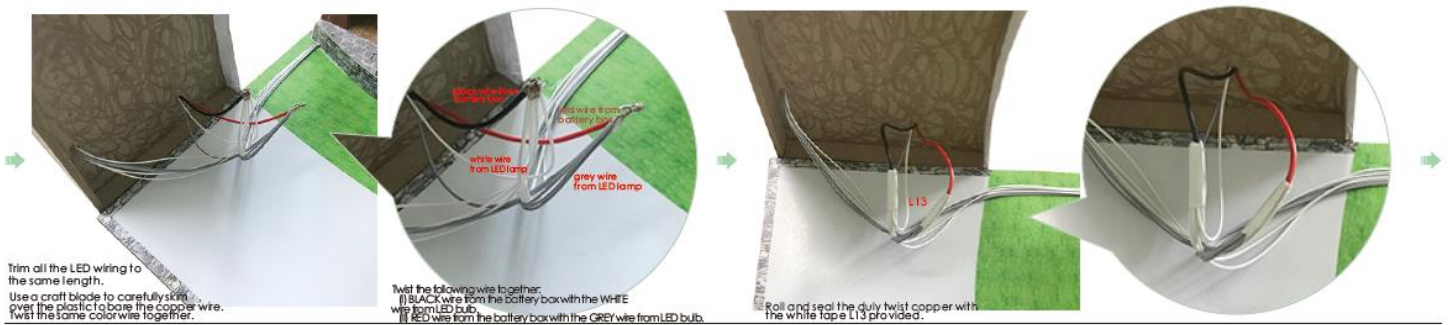
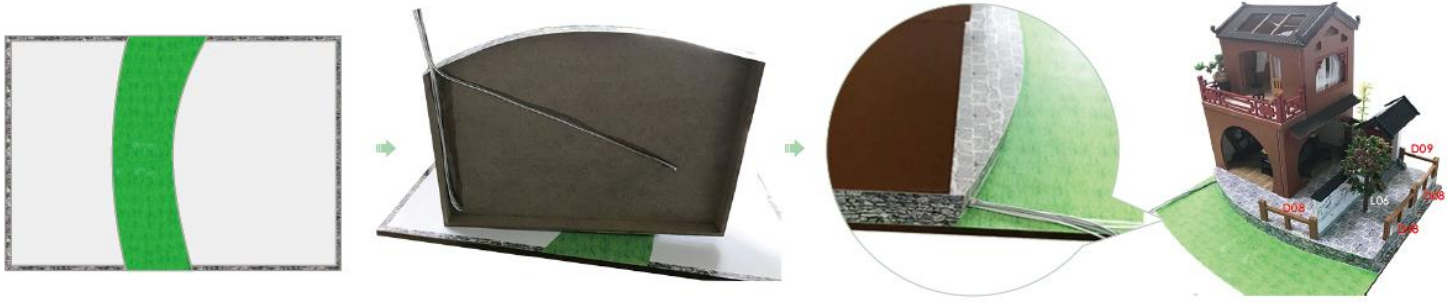
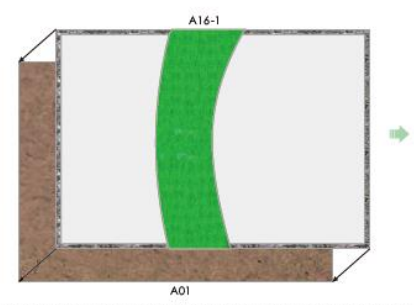
9

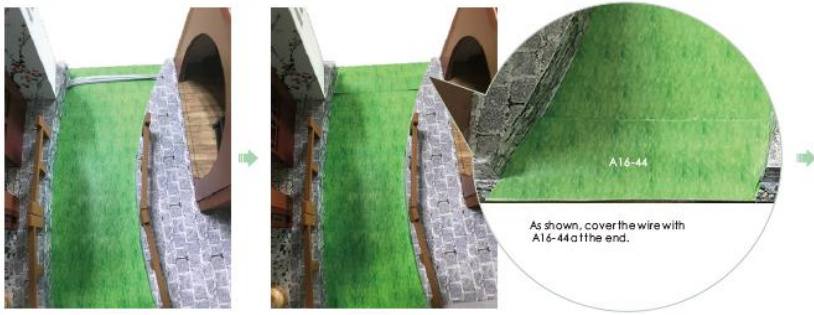


How to assemble the battery holder

Statement: the lamp wires cannot be inserted into the output socket.

- Can use 7 batteries
- Please notice the place of anode and cathode when pill in the batteries
- Rechargeable batteries are not blunt electricly
- Rechargeable batteries can only be charged under adult supervision
- Rechargeable batteries should be removed from the toy before charging
- Different types of batteries cannot mix
- Do not mix new batteries in use with semi-used batteries.
- Run out of battery should be removed from the toy
- The power shall not be short circuit



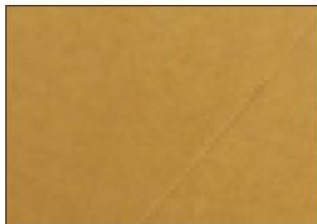


As shown, cover the wire with A16-44 at the end.



12

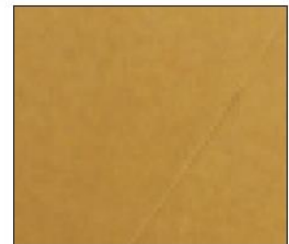
Installation of dust proof cover
(For updated version, the parts need to be purchased separately)



scale 1:6
M04 transparent cover
30*21*0.15cm
1 piece



scale 1:6
M05 transparent cover
29.7*18.5*0.15cm
2 pieces



scale 1:4
M06 transparent cover
21*18.5*0.15cm
2 pieces

1. Tear off kraft paper of each piece of transparent cover.



2. Paste M04, M05 and M06 together to complete the dust proof cover as shown.

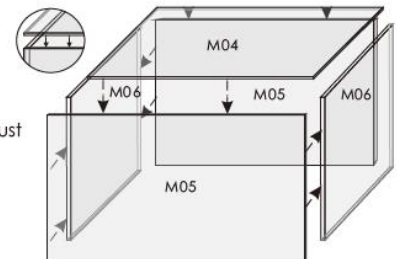


Photo of Dust proof cover



13



Attention: Please keep the instruction for future enquires after installation.