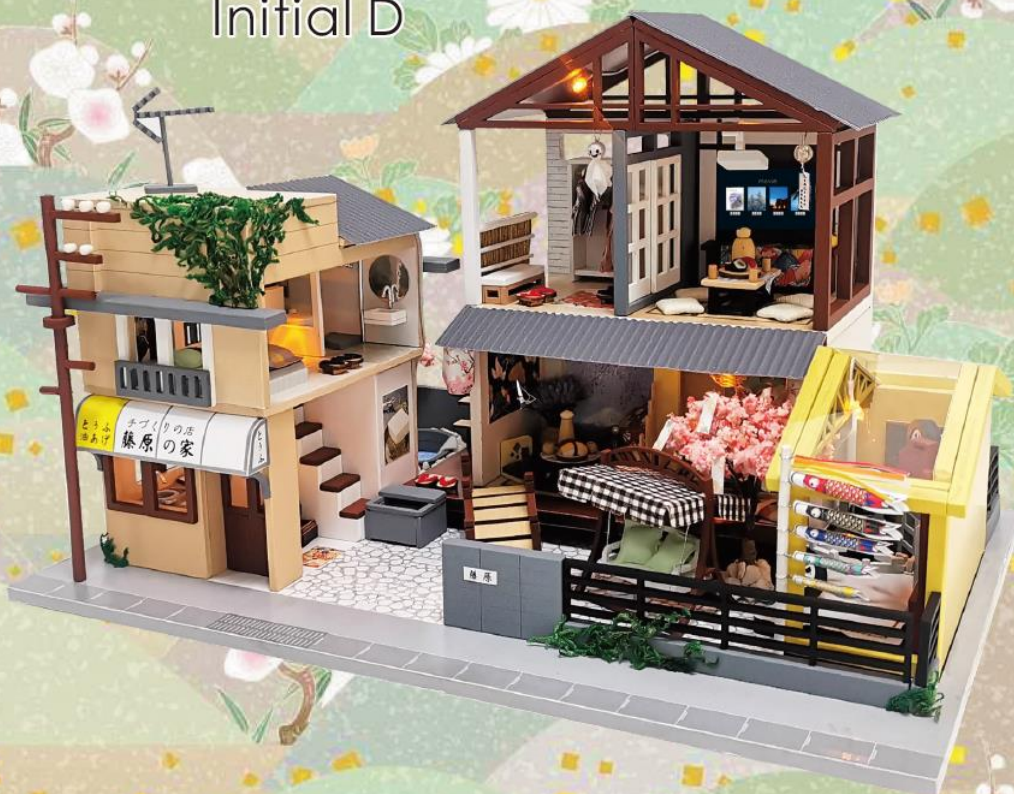


DIY mini house kits - Initial D



PC902 Instruction manual

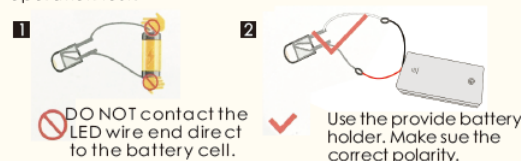
NOTICE OF ASSEMBLE

Tips for assembling

1. Pictures shown on the package may be slightly different from the actual product.
2. All the materials are taken in the operation step, put the remaining materials back into the original pocket until the installation is completed. (Avoid material loss during installation)
3. The dimensions indicated in the step diagram are "cm".
4. If there have template paper material, please cut the material according to the template to avoid mistakes..
5. According to the part rule example at the bottom of this page, refer to the part on the part number drawing, find the material object and compare with the material list, confirm and install. (Wooden parts only)
6. Glue should not be applied too much, so as not to dry longer, overflow will affect the effect of the finished product.
7. Part shapes may differ from the photographs depending on the production batch

Testing on LED function

Be sure to test the LED lights before making the lighting, note that the LED white wire to the negative, gray wire to the positive reference to the following figure operation test.



Product comes with tool:

- | | | | | | |
|--|--|---|--|--|---|
| 1

White glue:
It dries slowly and can paste materials firmly without trace. Can be used to paste wallpaper and printed paper. | 2

Ruler:
For measuring materials to identify the number of materials so as to enhance work efficiency. | 3




Scissors:
Can be used to cut printed paper, cloth, etc. | 4

Cutter knife:
For peeling off power wire skin and cutting off materials. | 5

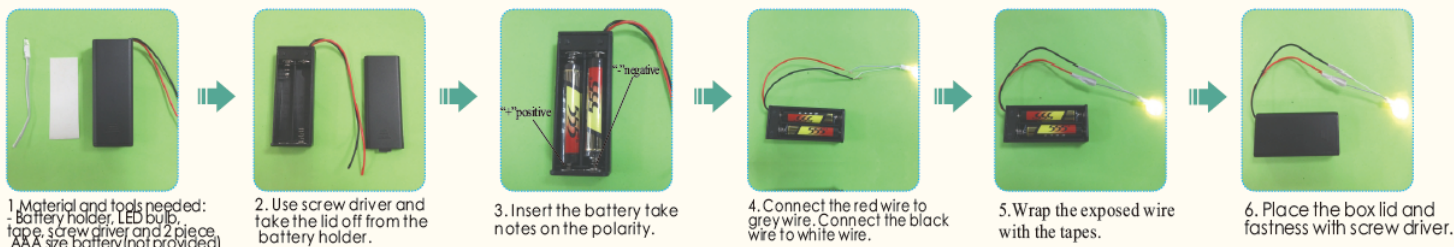
Alcohol gel:
It dries fast and can paste materials firmly, but may leave some trace. Can be used to paste small metal materials and small components of furniture. | 6

Tweezers:
For holding small materials and rolling up iron wire. |
|--|--|---|--|--|---|

Bring your own tools:

- | | | |
|--|---|--|
| 1

Screw Driver:
For fixing screws, mostly can be used to install doors and music components. | 2

Drill:
Can be used to drill holes in timbers, roll up hard iron wire or fix screws. | 3

Needle-nose pliers:
For cutting, bending wire, folding harder material |
|--|---|--|

How to assemble the battery holder



Example of parts rule:

A01: The parts are directly in the box.; B01: parts in bag B; C01: part in bag C, and so on.
(Note: display the printing paper A24-01 in the step: the printing paper is placed directly in the box, part number is A24-01)

details of miniature kit

Name	Material package
Printing paper	Bag A-A24 (All printing and template papers are shown on A24 paper, total 3 pieces of A3 and 1 piece of A4)
clock	F bag + printing paper
wall deco	F bag + printing paper
screen	F bag
fire hydrant	F bag + printing paper
ladder	F bag + printing paper
projector	F bag+N bag
long chair	G bag
shelf	G bag
fire rack	G bag
clogs	G bag+M bag
TV cabinet	G bag+N bag+P bag+printing paper
antenna	H bag
umbrella	H bag+N bag+ printing paper
crap flags	H bag+P bag+printing paper
tofu box	H bag+printing paper
tofu box	H bag+printing paper
telegraph pole	H bag+N bag
elevator	J bag+printing paper
double tatami table	J bag+M bag+N bag+printing paper
cabinet	J bag+M bag+N bag+printing paper
single bed	A bag+M bag+P bag+printing paper
tatami bed	K bag+M bag+printing paper
round table	K bag+M bag+N bag+printing paper
tatami table for four	K bag+M bag+N bag+printing paper
rocking chair	L bag+M bag+P bag
wardrobe	L bag+M bag+P bag
indoor flower	N bag+P bag
cherry blossom tree	P bag+printing paper
doll	M bag+N bag+P bag
wind bell	N bag+P bag+ printing paper
round lamp	N bag+P bag
umbrella light	N bag+P bag+printing paper
wall	D bag

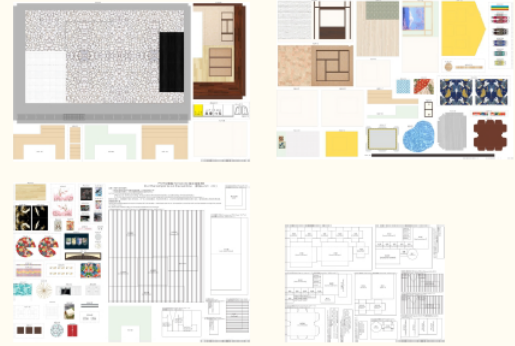
screen	D bag
washing table	D bag+M bag+P bag
shower	D bag+P bag+Q bag
sunshade	A bag+E bag+N bag+printing paper
sign board	E bag+printing paper
hot spring	E bag+P bag+printing paper
bridge	A bag+E bag
outdoor stair	E bag
interior stairs	E bag
outer frame	A bag+8 bag+C bag+D bag+E bag+F bag+G bag+H bag+J bag+K bag+L bag+M bag+N bag+P bag+printing paper
battery holder	C bag



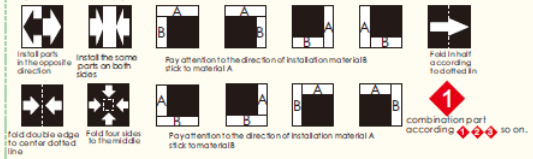
Thumbnail of material list(reference only)



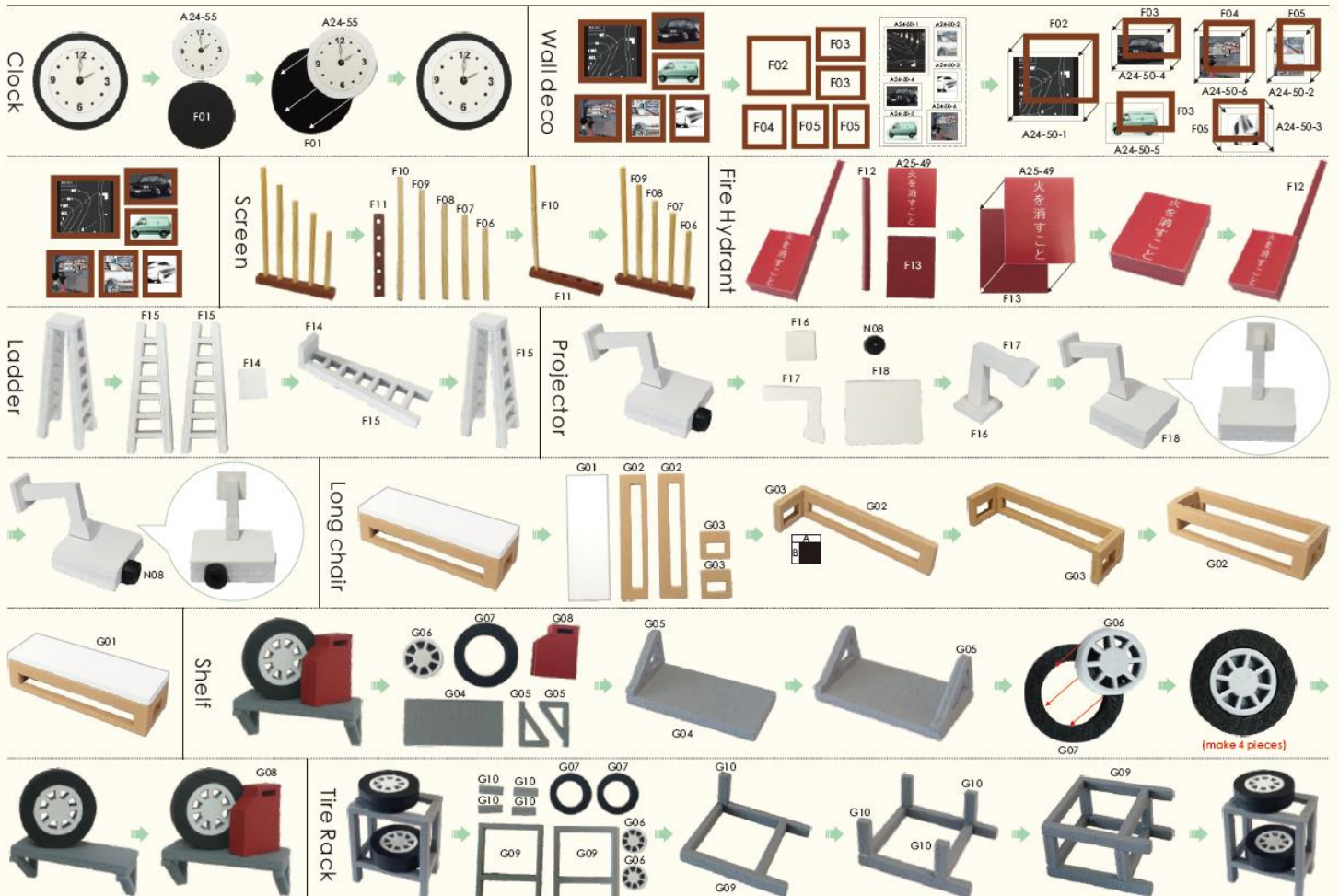
Thumbnail of printing paper & template paper (reference only)



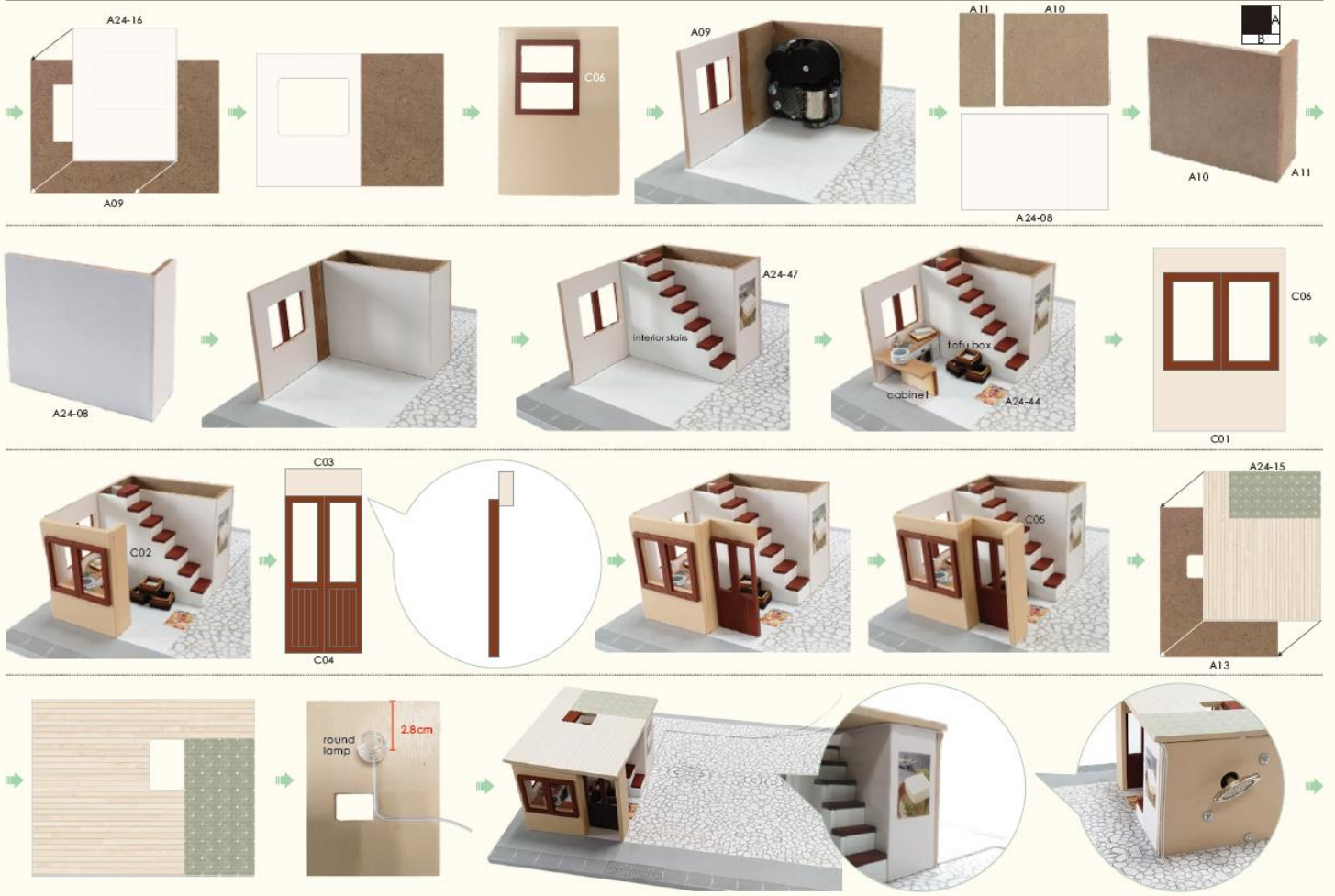
Symbol description used



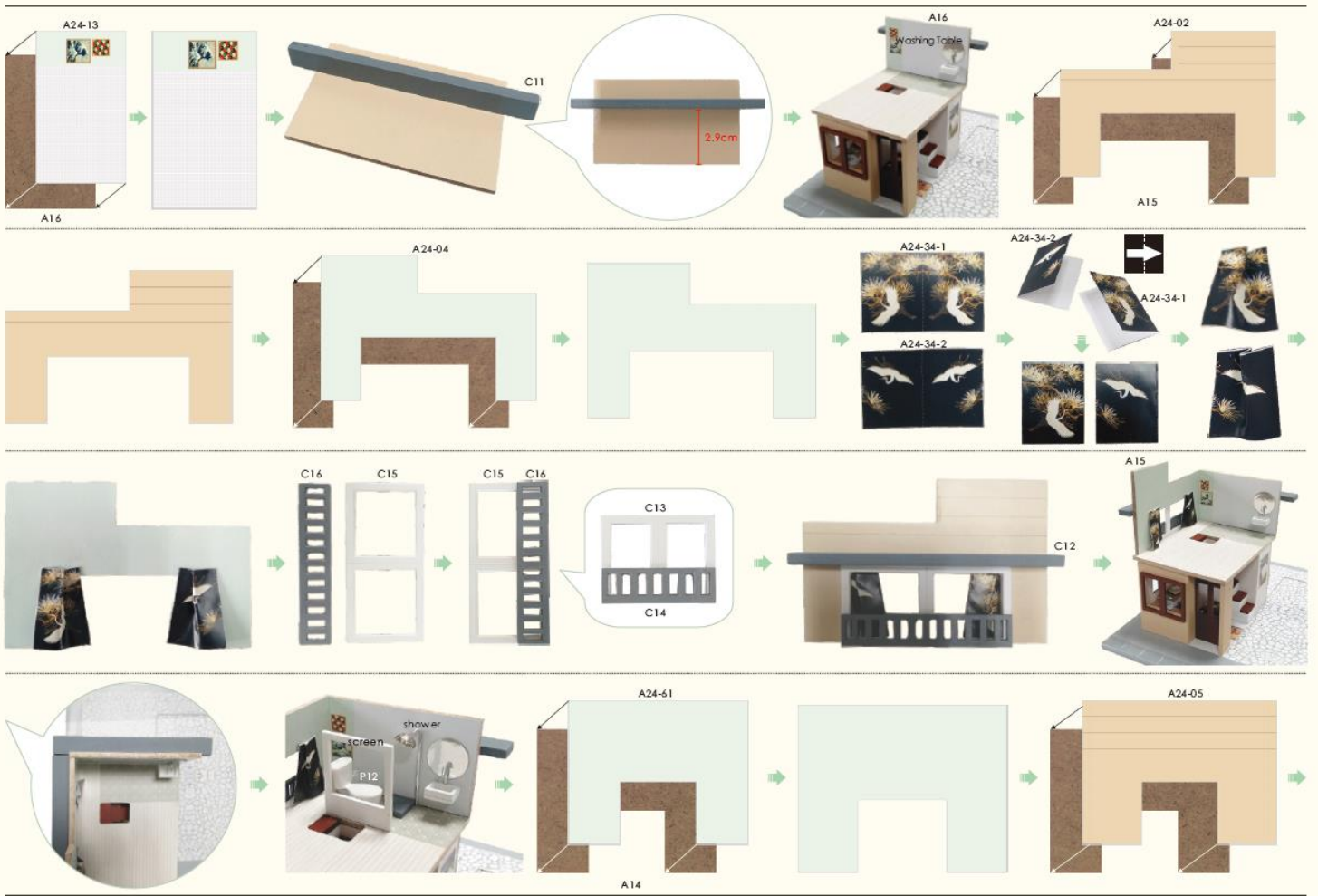
2



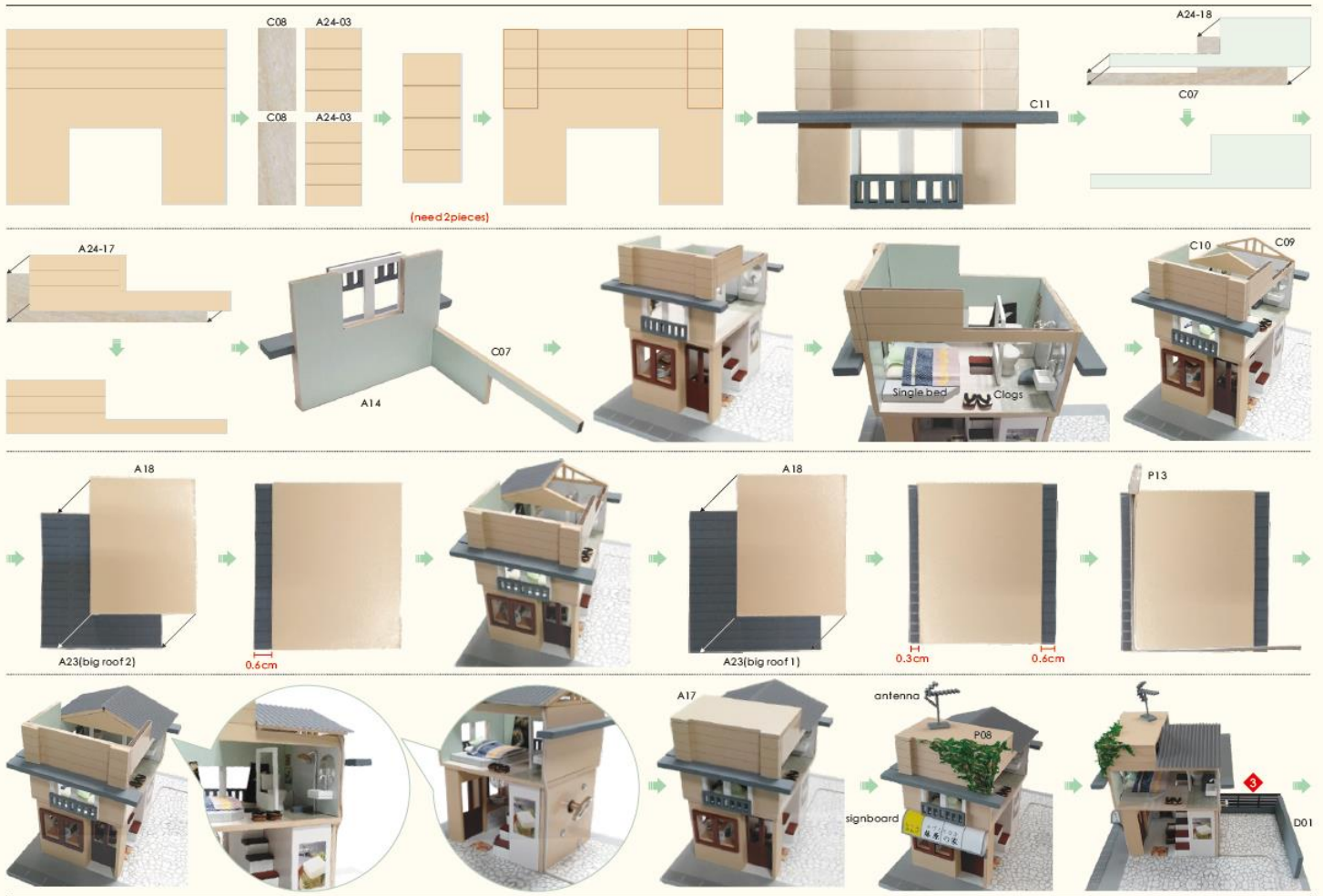
3



12



13



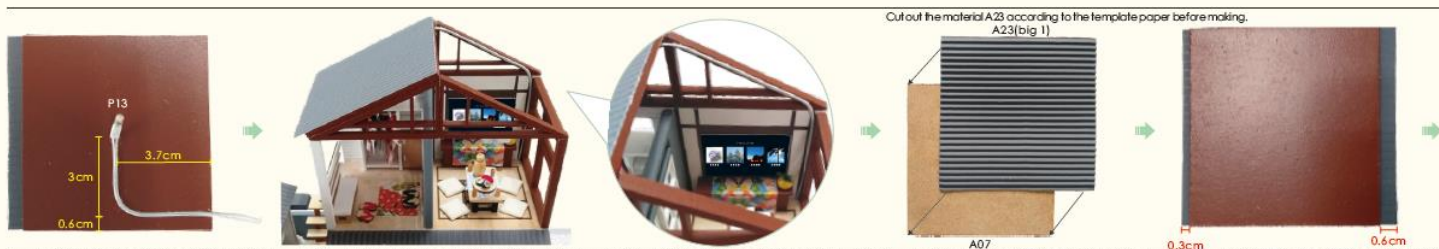
14



15



Cut out the material M14 according to the template before making.



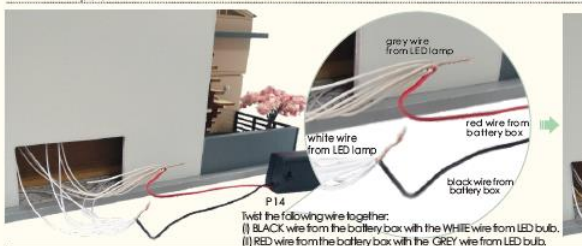
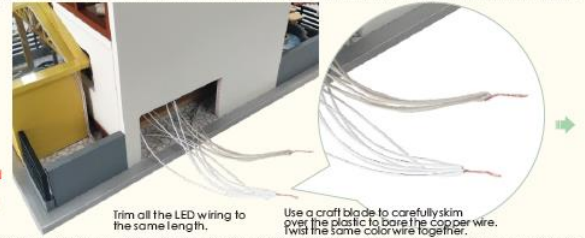


According to the template paper center line, use a knife to scratch a mark, gently fold it.



How to assemble the battery holder

- Statement: the lamp wires cannot be inserted into the output socket.
- Can use 7 batteries
 - Please notice the place of anode and cathode when put in the batteries
 - Rechargeable batteries are not blunt electrically
 - Rechargeable batteries are not blunt electrically
 - Rechargeable batteries can only be charged under adult supervision
 - Rechargeable batteries should be removed from the toy before charging
 - Different types of batteries cannot mix
 - Do not mix new batteries in use with semi-used batteries.
 - Run out of battery should be removed from the toy
 - The power shall not be short circuit



Installation of dust proof cover (For updated version, the parts need to be purchased separately)



Scale 1:7
Q04 Transparent cover
30*20*0.15cm(1piece)



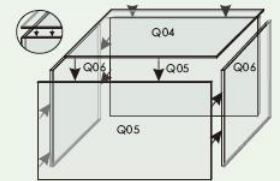
Scale 1:7
Q05 Transparent cover
30*19.5*0.15cm(2pieces)



Scale 1:7
Q06 Transparent cover
19.7*19.5*0.15cm(2pieces)



1. Tear off kraft paper of each piece of transparent cover.



2. Paste Q04, Q05 and Q06 together to complete the dust proof cover as shown.

Photo



Photo of Dust proof cover



Attention: Please keep the instruction for future enquires after installation.