

Mermaid tribe



13849 Instruction manual

NOTICE OF ASSEMBLE

Self-provided tools

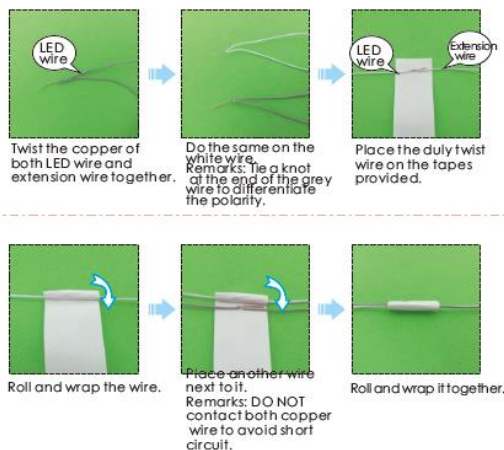


Warnings

- The product is not suitable for children under 14 years old. The should be under custody of adults when playing with the product.
- There are small parts, please do not swallow them for avoiding dangerous accidents.
- Please also play attention to the sharp-pointed materials to avoid injuries.

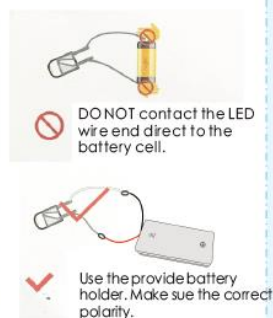
Making tips

1. LED wiring indication: White=Positive; Grey=Negative.
2. Use a craft blade to carefully skim over the plastic to bare the copper wire.
3. For LED wiring extension, please refer to the below steps:

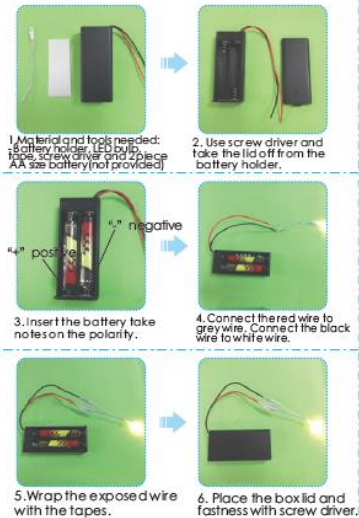


Tips for assembling

1. Pictures shown on the package may be slightly different from the actual product.
2. Please use the provided tracing paper for cutting purpose to achieve the best outcome.
3. Product designs and specification may be subject to change without advance notice for purpose of making improvement.
4. Testing on LED function:



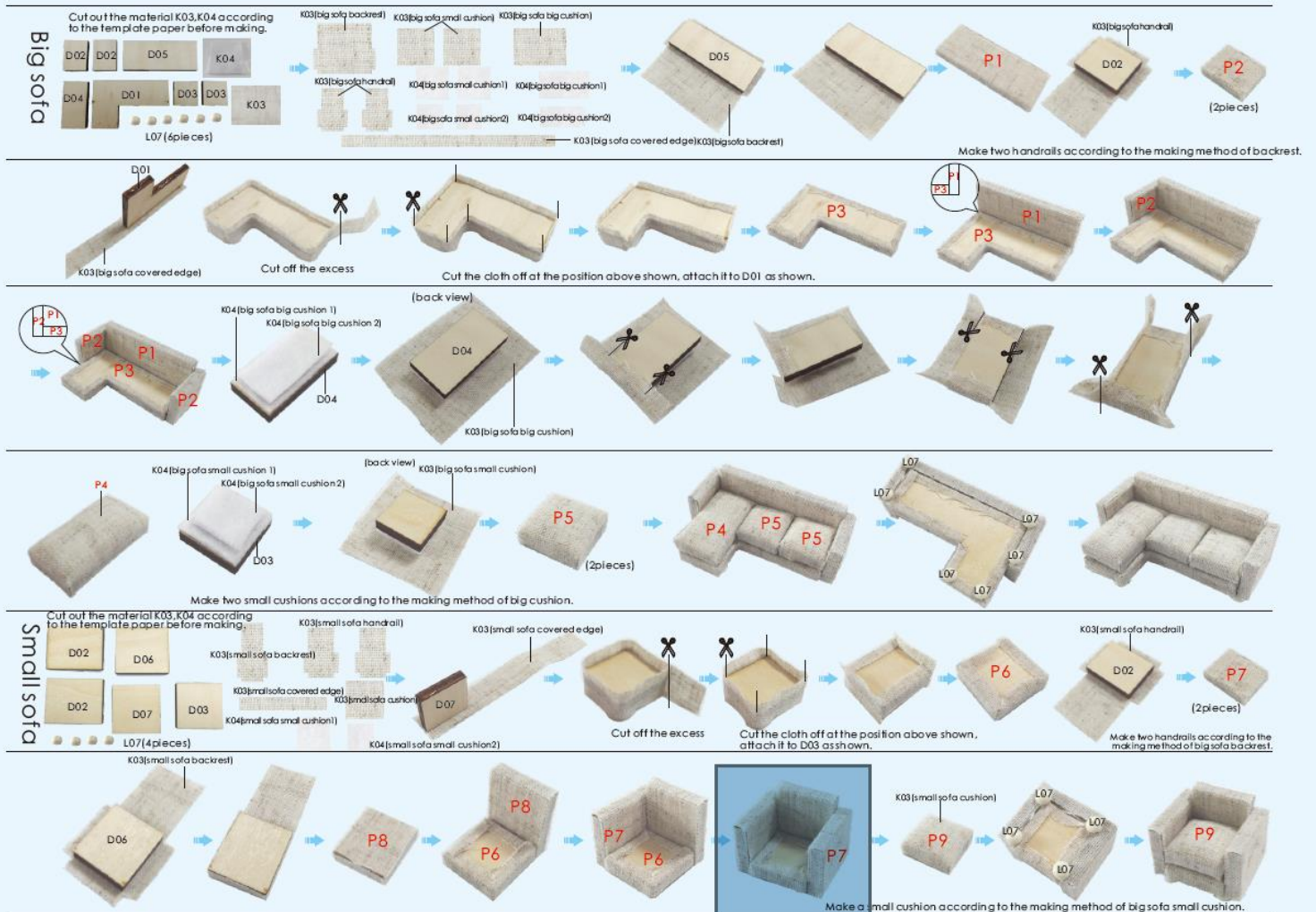
How to assemble the battery holder



Product information



2



3

Circular sofa

Cut out the material K03, K04 according to the template paper before making.

D08 D09 L07 (3 pie ces)

K03 (Circular sofa cushion covered edge) K04 (circular sofa cushion)

K03 (circular sofa cushion covered edge)

K03 (circular sofa covered edge)

D09 K03 (circular sofa covered edge)

the top and bottom of D09 need to be pasted as shown.

P10

D08 K04 (circular sofa cushion) K03 (circular sofa cushion)

(back view)

Cut the cloth off at the position above shown, attach it to D09 as shown.

cover up D08 with K03, cut off the excess as shown.

K03 (circular sofa cushion covered edge)

(fold and stick well)

P11 P11

P10

L07

Cut off the excess

Corner sofa

Cut out the material K03, K04 according to the template paper before making.

D11 D10

K03 (corner sofa cushion) K04 (corner sofa cushion)

K03 (corner sofa cushion covered edge)

K03 (corner sofa cushion covered edge)

D11 K03 (corner sofa covered edge)

Cut off the excess

the top and bottom of D11 need to be pasted as shown.

P12

K04 (corner sofa cushion) D10

Cut the cloth off at the position above shown, attach it to D11 as shown.

K03 (corner sofa cushion)

D10

(fold and stick well)

K03 (corner sofa cushion covered edge)

Cut off the excess

P13 P13

P12

Cover up D10 with K03, cut off the excess as shown.

Table

D12 D14 D14 M13: 0.3cm M14: 0.3cm M15: 0.3cm L01

A30-1-1

A30-1-2

K15: 4.5cm

M17 M24

D12

Attach A30-1-1, A30-1-2 on D12 as shown.

D14 D14

M24

L01

Cut out some leaves from M24 and put them on L01 as shown.

Cut M13, M14, M15 with a knife as shown.

M14: 0.1cm

M15: 0.1cm

K15: 1.5cm

M13: 0.3cm

A30-1-3

Fold A30-1-3 in a "Z" form according to the lines as shown.

M17

Box

A30-2 A30-3 A30-4

A30-5 A30-6

A30-2

Following above step to make the box as shown.

A30-3 A30-2 A30-4 A30-6 A30-5

According to the same method to make other boxes.

4

TV console

C14 C15 C16 C16 C17

M09

A30-7

(back view) C14

Attach A30-7 to C14 as shown.

C17

C15

C16 C15

C16 C15

C14

M09

A30-5 A30-6

Mirror

A30-8 G14

Mirror template

K07 (mirror template)

A30-8

G14

Refrigerator

E13 E13 E14 E15 E16 E17 E17 L07 (4 pie ces)

E11 E12

E13 E14 E14 E16

E12 E17

L07 L07

L07

Cabinet

Cut out the material K02, K07 and K09 according to the template paper before making.

E01 E05 E05 A30-13

E02 E03 A30-10 A30-9

E08 E08 E07 E04 E03

A30-11 M02

A30-12 K09 (Gas burner) K07 (Gas burner)

K13: 2cm

K14: 7.2cm

K16: 5cm

E09 E08 E07

A30-11 A30-10 A30-12

E02 E02

E03

K07 (washbasin) E05

E05 E06 E06

E04 E06

E04

Cut out K07 according to the template of K07, attach them to the wood as shown.

K13: 2cm

M02

K02 (washbasin)

K07 (Gas burner)

K09 (Gas burner)

Cut out K07 and K09 according to the template, and attach them together as shown.

K14: 3.2cm

1cm

A30-13

M07

K16: 3.8cm

K16: 0.6cm

0.2cm 0.2cm

0.2cm

0.2cm

Cut K16 out of two pieces (0.6cm) and bend it as shown, attach them to the pot form.

L03

M10: 0.1cm

5

Dining table

Attach A30-14-1, A30-14-2 to F10 as shown.

K04 (dining chair cushion)
K03 (dining chair cushion)

Cover up K04 with K03, attach it on the chair form as shown. (3 pieces)

A27 (cake rack 1) A27 (cake rack 2)
K12: 1.2cm (2 pieces)
K12: 5.6cm K12: 5cm
M10: 0.1cm (4 pieces)
M10: 0.1cm (5 pieces)

Follow the above steps to make the cake rack. Cut out M10 and M11 according to before method, attach them to the cake rack as shown.

(Template: 1. K03 dining chair cushion 2. K04 dining chair cushion 3. A27 cake rack)

Wall cabinet

A30-16
A30-17 A30-18
L04 (2 pieces) L05 (2 pieces) L07 (2 pieces)
K12: 1cm
L22: 1.6cm K11: 7cm M10: 0.5cm M11: 0.5cm

the boxes we made before

L05 L07 A30-17 L22: 0.8cm M10: 1cm (5 pieces)
K02 (can) A30-18 K11: 3.5cm M11: 0.1cm (5 pieces)

Attach K02 on canning form, tie it up with K11 as shown, another method of canning is the same.

Bedside table

G06 G05 G07
K16: 2.6cm L04 L21
K10: 2cm
A30-19 A30-18
K18 A30-20

Cut K16 out of a piece (2.6cm) and bend it as shown.

A30-19 G06 G05 G07 A30-20

Piano

H03 H08 H09 H10 H15
H16 H01 H02 H04 H05
H11 H13 H14
A30-22 A30-21 H10
H12 H11 H10 H16 H13 H14 H08 H09 H08

Attach A30-21 to H10, fold the remaining parts as shown.

(the cover for piano keyboard) H11 H10 H16 H13 H14 H08 H09 H08

H17 H19 H18 H17 H19 H18
K02 K04 K04 (piano stool) K02 (piano stool)
Cover up K04 with K02 as above shown.

(Template: 1. K02 piano stool 2. K04 piano stool)

Cabinet

G11 G10 G12 G09
G11 G08 G13
L04 L19 K04
A30-23 A30-24
G10 G11 G12 G13 G08 G09
K04 (wash basin towel)

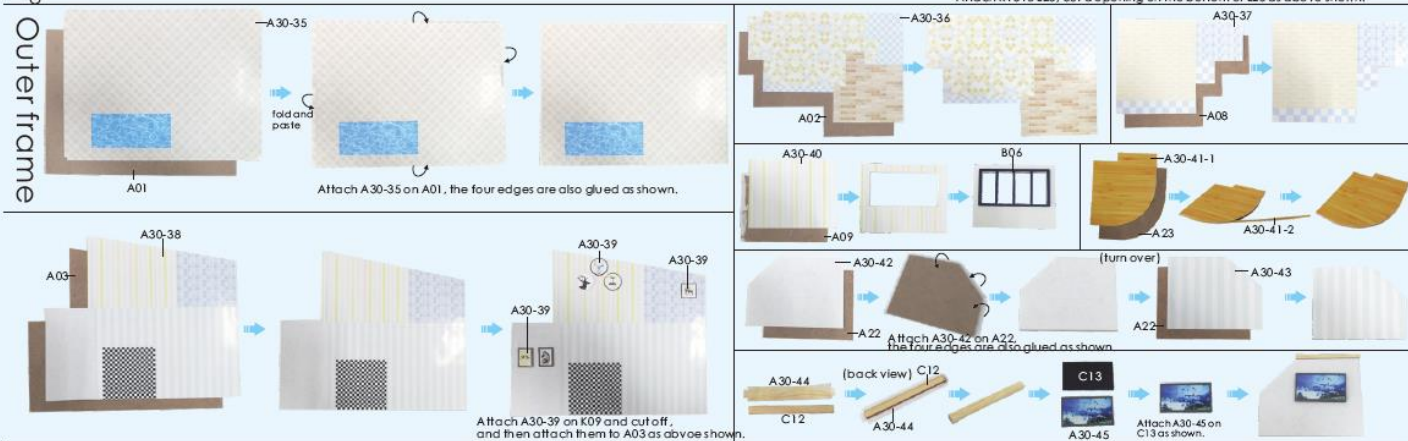
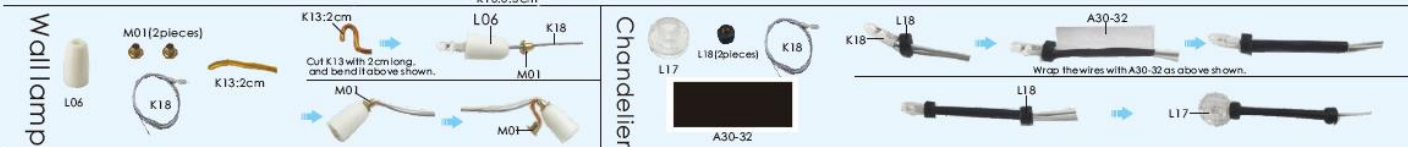
To carve a hole with a knife

Attach K04 to the combination as shown.

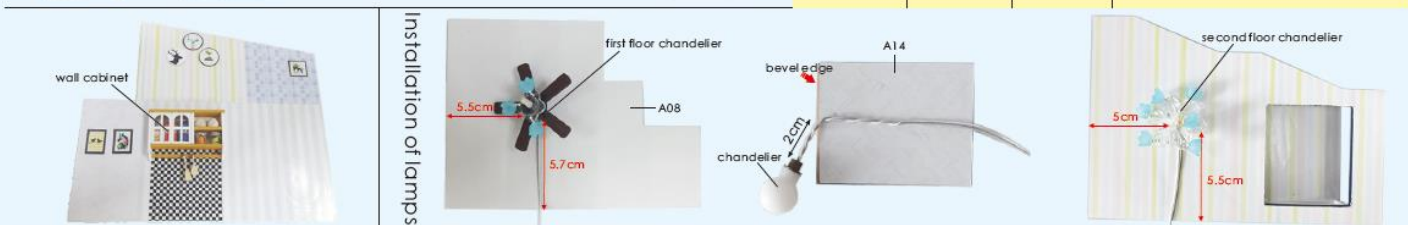
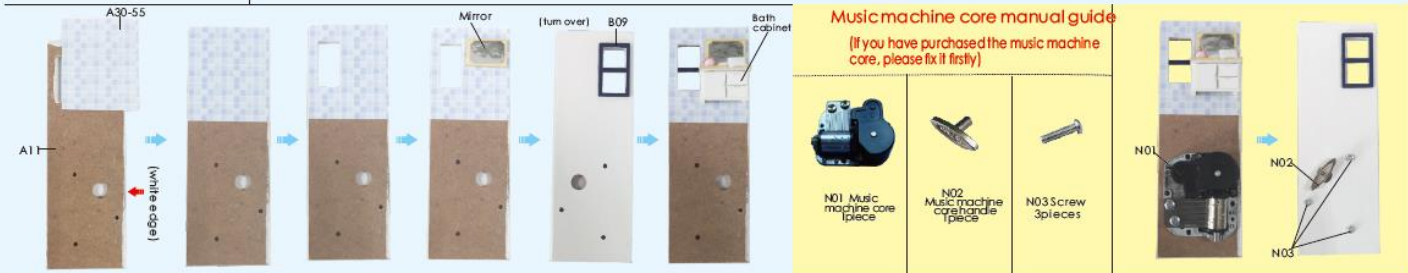
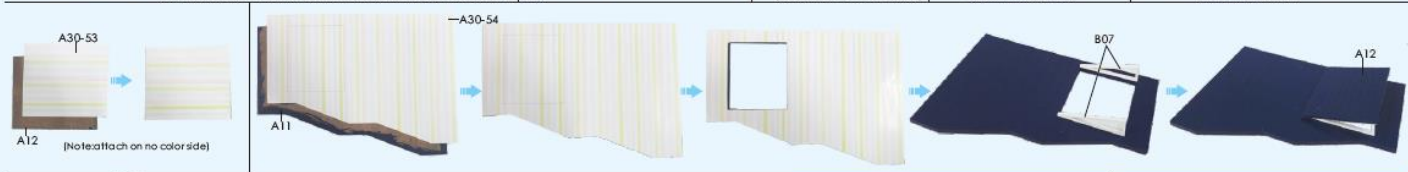
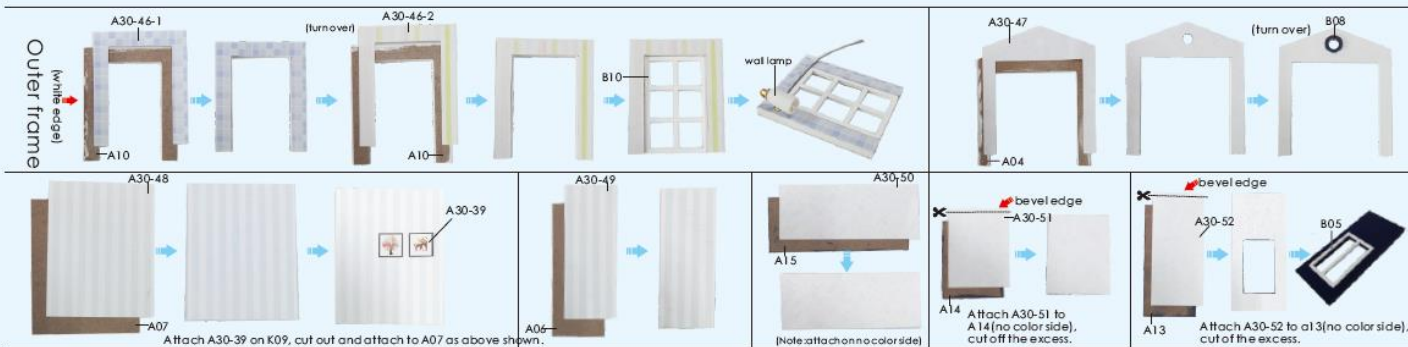
Floor lamp

D17 D18 K01 (floor lamp)
D16 D15 K18
D17 D18 D16 D15 K18

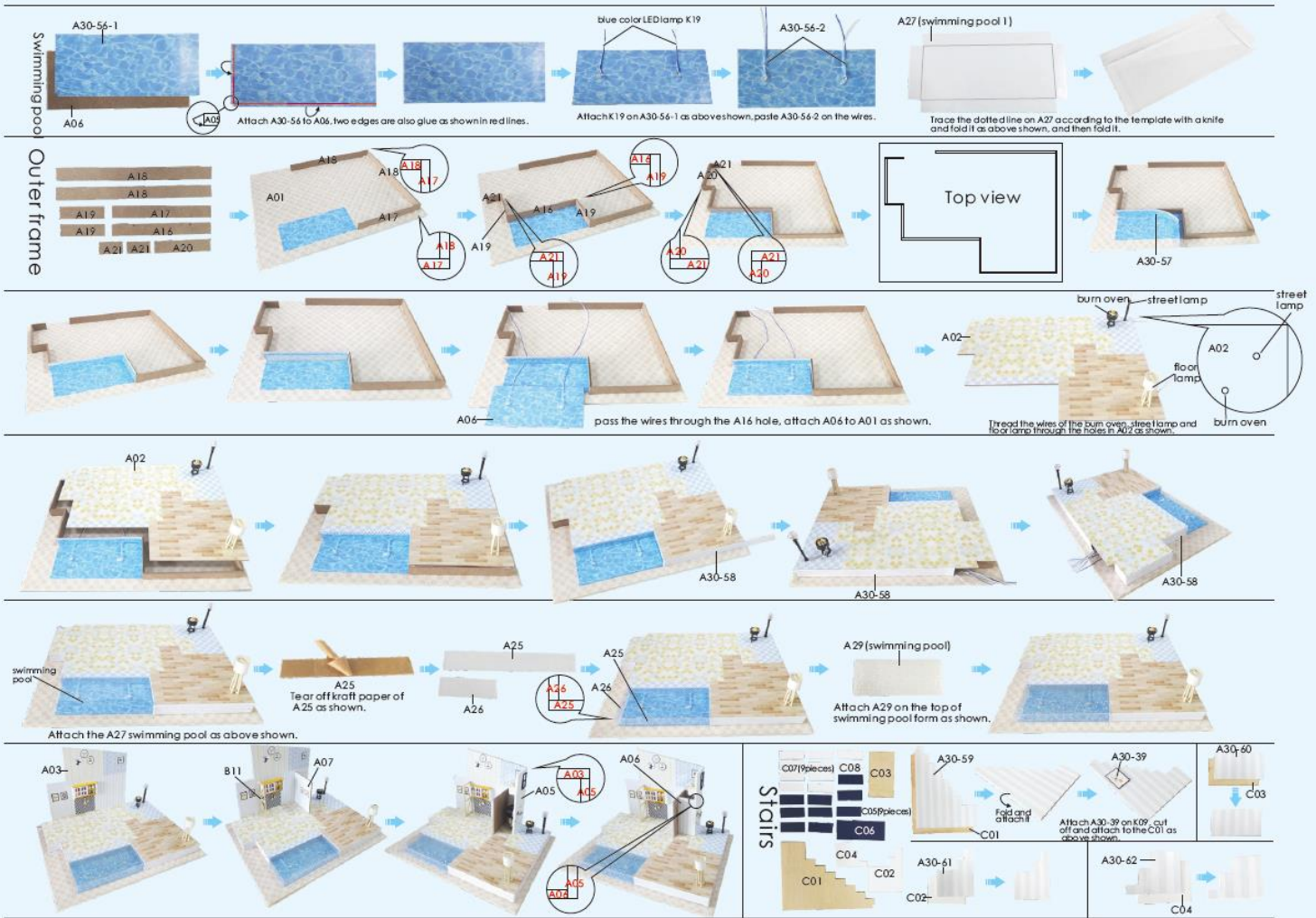
Follow above steps to make the floor lamp as shown.



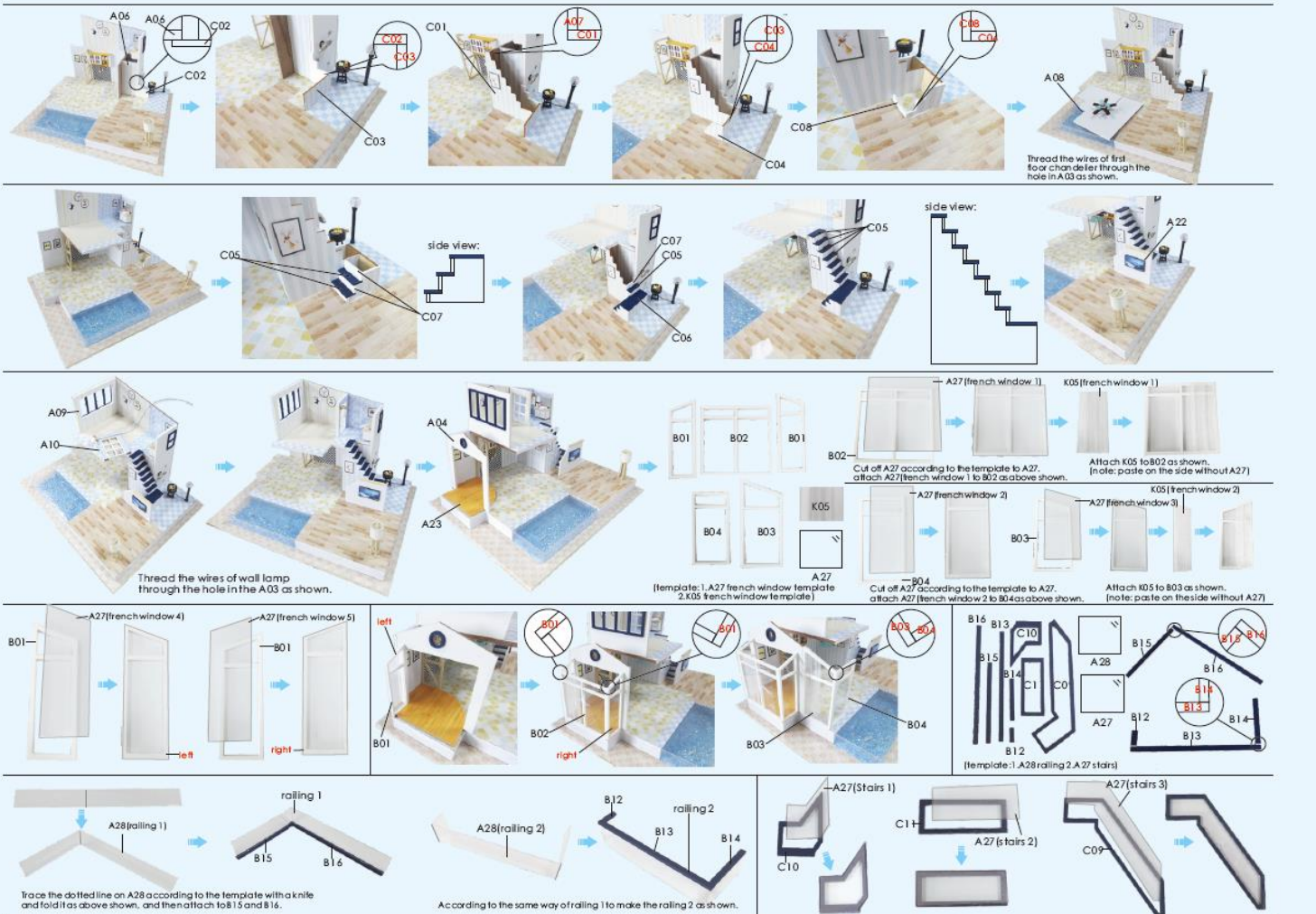
10



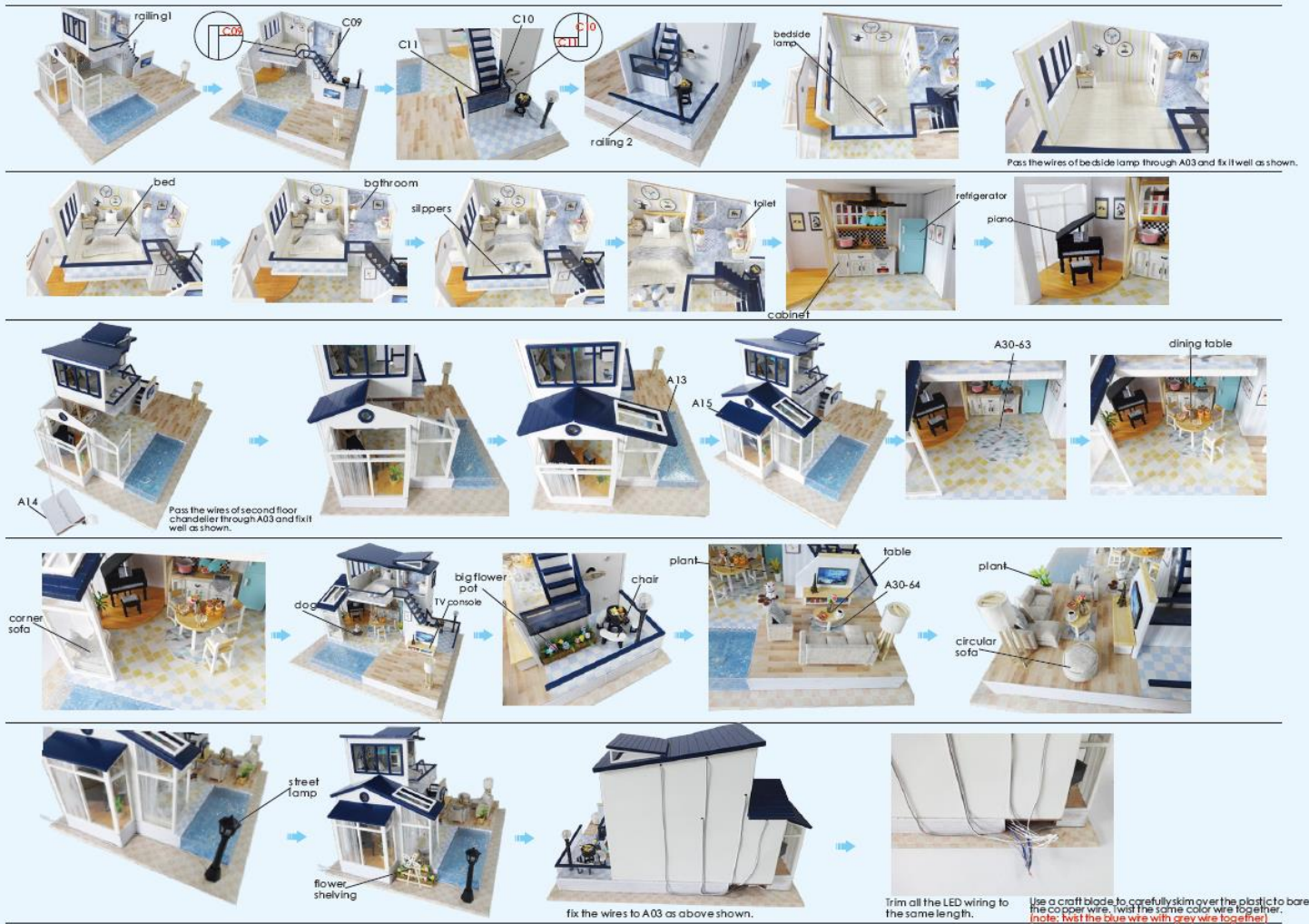
11



12



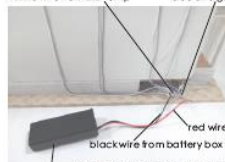
13



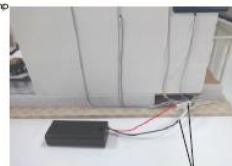
Statement: the lamp wires cannot be inserted into the output socket.

- Can use 7 batteries
- Please notice the places of anode and cathode when put in the batteries
- Rechargeable batteries are not blunt electricity
- Rechargeable batteries can only be charged under adult supervision
- Rechargeable batteries should be removed from the toy before charging
- Different types of batteries cannot mix. Do not mix new batteries in use with semi-used batteries.
- Run out of battery should be removed from the toy
- The power shall not be short circuit

white wire from LED lamp blue and grey wire from LED lamp



Twist the following wire together:
 (i) BLACK wire from the battery box with the WHITE wire from LED bulb.
 (ii) RED wire from the battery box with the GREY wire and blue wire from LED bulb.



Roll and seal the gully twist copper with the white tape K21 provided. Place the battery box in the allocated space.



Installation of dust proof cover
 (For updated version, the parts need to be purchased separately)



Scale 1:10
 N04 Transparent cover
 0.15*25*33 1piece



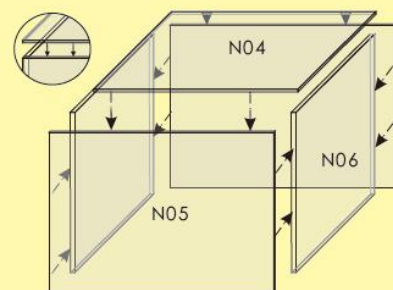
Scale 1:10
 N05 Transparent cover
 0.15*22*33 2pieces



Scale 1:10
 N06 Transparent cover
 0.15*22*24.7 2pieces



1. Tear off kraft paper of each piece of transparent cover.



2. Paste N04, N05, and N06 together to complete the dust proof cover as shown.

Photo of Dust proof cover



Attention: Please keep the instruction for future enquires after installation.