

# DIY handmade goods— Dream back to ancient town



## NOTICE OF ASSEMBLE

### Bring your own tools



**Scissors:**  
Can be used to cut printed paper, cloth, etc.



**Screw Driver:**  
For fixing screws, mostly can be used to install doors and music components.



**Tweezers:**  
For holding small materials and rolling up iron wire.



**Cutter knife:**  
For peeling off power wire skin and cutting off materials.



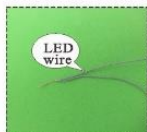
**Ruler:**  
For measuring materials to identify the number of materials so as to enhance work efficiency.

### Warnings

- The product is not suitable for children under 14 years old. The should be under custody of adults when playing with the product.
- There are small parts, please do not swallow them for avoiding dangerous accidents.
- Please also play attention to the sharp-pointed materials to avoid injuries.

### Making tips

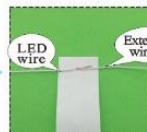
1. LED wiring indication: White=Positive, Grey=Negative.
2. Use a craft blade to carefully skim over the plastic to bare the copper wire.
3. For LED wiring extension, please refer to the below steps:



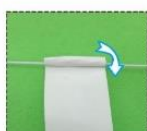
Twist the copper of both LED wire and extension wire together.



Do the same on the white wire. Remarks: Tie a knot at the end of the grey wire to differentiate the polarity.



Place the duly twist wire on the tapes provided.



Roll and wrap the wire.



Place another wire next to it. Remarks: DO NOT contact both copper wire to avoid short circuit.



Roll and wrap it together.

### Tips for assembling

1. Pictures shown on the package may be slightly different from the actual product.
2. Please use the provided tracing paper for cutting purpose to achieve the best outcome.
3. Product designs and specification may be subject to change without advance notice for purpose of making improvement.
4. Testing on LED function:



DO NOT contact the LED wire end direct to the battery cell.



Use the provide battery holder. Make sue the correct polarity.

### How to assemble the battery holder



1. Material and tools needed: Battery holder, LED bulb, tape, screw driver and 2 piece AA size battery(not provided)



2. Use screw driver and take the lid off from the battery holder.



3. Insert the battery take notes on the polarity.



4. Connect the red wire to grey wire. Connect the black wire to white wire.



5. Wrap the exposed wire with the tapes.

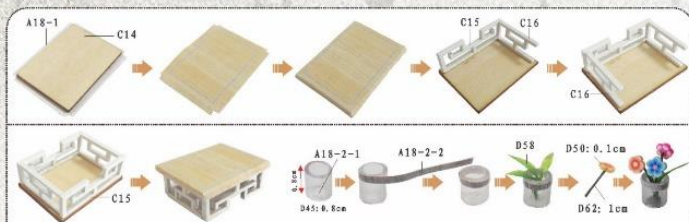


6. Place the box lid and fastness with screw driver.

# Product information



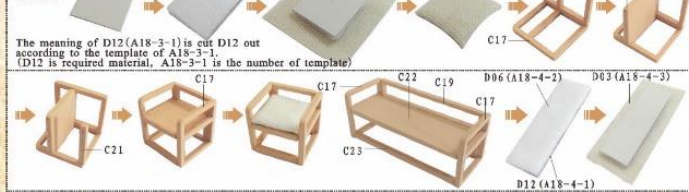
## Tea table



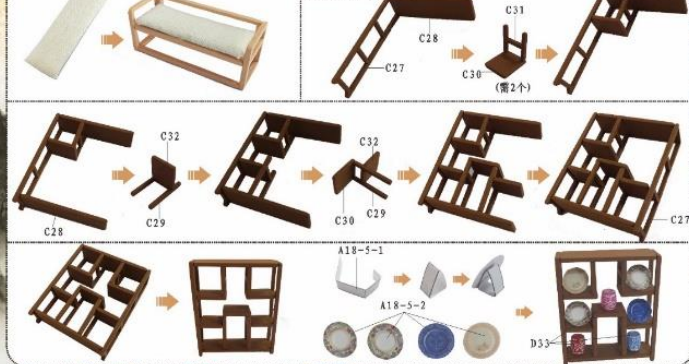
## Book folding



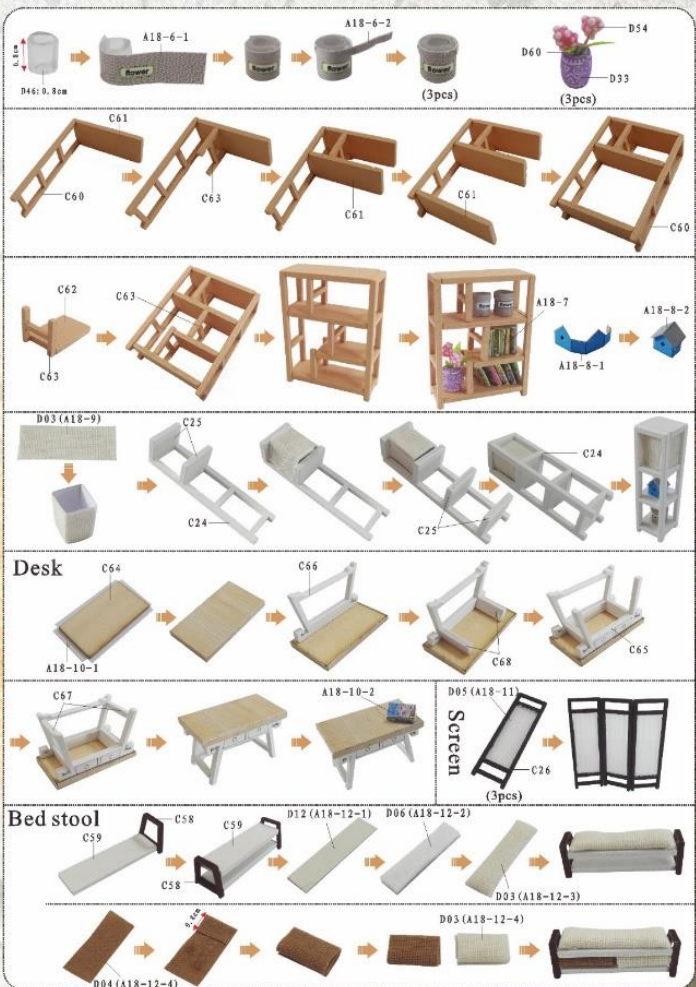
## Sofa



## Shelving



## Bookcase



### Bed

**Bed**  
 C51, C50, C52, C49, D06 (A18-13-1), D08 (A18-13-2), 0.8cm, D03 (A18-13-3), D04 (A18-13-4), D05 (A18-13-5), A18-14, D09, B04 (A18-13-5).  
 Cut D05 out according to the template of A18-13-1. Apply the glue according to the red line as shown.  
 Fold the cloth in half insert some cotton to D09 as shown. Apply the glue on the top and fix it as shown.

**Bedside table**  
 A18-15, C53, C54, C55, C54, A18-16, D36: 0.5cm.

**Piano**  
 A18-17-2, C02, C01, C03, C04, C04, C04, C04, C05, A18-17-1, C06, C07, C09, A18-17-3, C10, C12, C11, C13, C13.

**Dog house**  
 A18-19, C82, C83, C83, C81, C79, C80, C84.

### Wash basin cabinet

**Wash basin cabinet**  
 C69, A18-20-1, C70, C71, C72, C73, A18-20-2, D61: 2.5cm, D04 (A18-20-3).

**Toilet**  
 A18-21-1, D11 (A18-21-2), A18-22, A18-22, D39.

**Showers room**  
 C74, C75, A18-23-3, A18-23-1, A18-23-2, D02, D02, D02, D01, D26, D28, D27, D26, D30, D29, D31, D63: 1.2cm, D63: 2.5cm, D04 (A18-24), A18-25-1, A18-25-2, C42: 0.6cm, D63: 1.2cm, A18-25-3, D67, A18-25-4, C41, C40, C39, C38, C37, C36.

### Flower shelving

**Flower shelving**  
 C42, C43, C43, A18-26-1, D53, D54, D55, D12 (A18-27-1), A18-27-3, C44, D13 (A18-27-2), D48, D51, A18-28-1, A18-28-2, D50: 0.1cm, D46: 0.8cm, D62: 1cm. According to the same steps to do the other flowers, the material is D48, D49, D51.

**Round table**  
 C46, C45, A18-29-1, D36, D37, C47, C46: 0.8cm, A18-29-2, A18-29-3, D13 (A18-29-4), C48, (4pcs).

**Billiard table**  
 A18-30, C33, C34, C35, A18-31-1, A18-31-2, C10, D34, B12, B13, A18-32, A18-33-3, A18-33-3, D12 (A18-33-1), A17 (A18-33-2), A18-33-3, A18-33-3, D66: 7cm, D26, D06 (A18-33-5), A18-33-4, D66: 7cm, D26, D06 (A18-33-5), D51.

**Barrel**  
 (Turn it over)

### Lantern

**Lantern**  
 A18-34-1, C102, A18-34-2, A18-34-3, A18-34-4, C78, A18-34-5, A18-34-5, A18-34-4, (4pcs).

**Wall lamp**  
 C93, D69, C94, A16 (18-35-1), A16 (18-35-2).

**First floor chandelier**  
 D20, D19 (6pcs), C77, 18-36, D35, (2pcs).

**Second floor chandelier**  
 D36: 0.8cm, D36: 1.2cm, D36: 1cm, D19, C76, D23.

**Floor lamp**  
 D25, D24, C57, D69, D65: 10cm.

**Chandelier**  
 D22, Small opening, D65: 10cm, D69.

Cut a small opening on D22 as above shown.  
 Cut off a piece of D65 (10cm) and wrap it up according to above shown, fix the LED line to the small opening on D22 when wrapping to the last lap as shown.

# Chandelier

**Chandelier**

D21 → D69 → D33 → D64: 2cm

Cut D21 according to the red dotted line as shown.

D64: 1.5cm → D64: 2.5cm → A18-37 → C100 → D64: 2cm

Attach A18-37 on C100 and fix the chandelier as shown.

D64: 2.5cm → D64: 1.5cm

**Steps**

B79 → B80 → A18-38-1 → A18-38-2 → B82 → B83 → B84 → A18-39-1 → A18-39-2

**Flowerpot**

A18-40-1 → A18-40-2 → A18-40-3 → D67 → D52

Follow the steps shown above to make the flowerpot well. Flowerpot A18-41 does the same making method.

D60 → D59: 0.1cm → D62: 2.5cm → A18-41

Arrange the other flowers in the same way.

D17 (A18-41-1) → D18 (A18-41-2)

Fold → Several times of discount

Roll up the folded flowers. (3pcs)

Follow the steps shown above to make the rose well and insert to the flowerpot. The yellow rose does the same making method.

C99 → C95 → A18-42-1 → D13 (A18-42-2) → D67 → D60 → D13 (A18-42-3) (2pcs) → D54

# Sunflower

**Sunflower**

D57 → C95 → C96 → C97 → D14 (A18-44-1) → D62: 1.5cm → D15 (A18-44-2)

The making method of flower groove is same as above, the template paper is A18-43.

**Hot spring**

B10 → A18-45-1 → A18-45-2 → A18-45-4 → A16 (A18-45-3) → B11

B10 → A18-45-5 → B11 → D68

**Lotus pond**

C85 → C86 → C87 → A18-46-1 → A18-46-2 → A16 (A18-46-3)

**Lotus**

D16 (A18-47-1) → 3mm → D62: 2cm → A18-47-2 (2pcs)

Cut out D16 according to the template of A18-47-1 and fix it well as above shown.

**Waterwheel**

C90 → C90 → C89 → C92 → C91

**Gate**

B59 → D10 (A18-48) → B58 → B60 → B61

# Outer frame

**Outer frame**

A18-49 → A01

A18-50 → A02

A18-51 → A04

A18-52 → A06

A18-53 → A03 → B29 → B30 (turn it over)

A18-54-1 → A18-54-2 → B31 → B33 → B32

A18-55 → A08

A18-56 → A11 → B22 → B22

A18-57-1 → A10 → A18-57-2 → B21 → (2pcs) → (turn it over)

A18-58 → A10

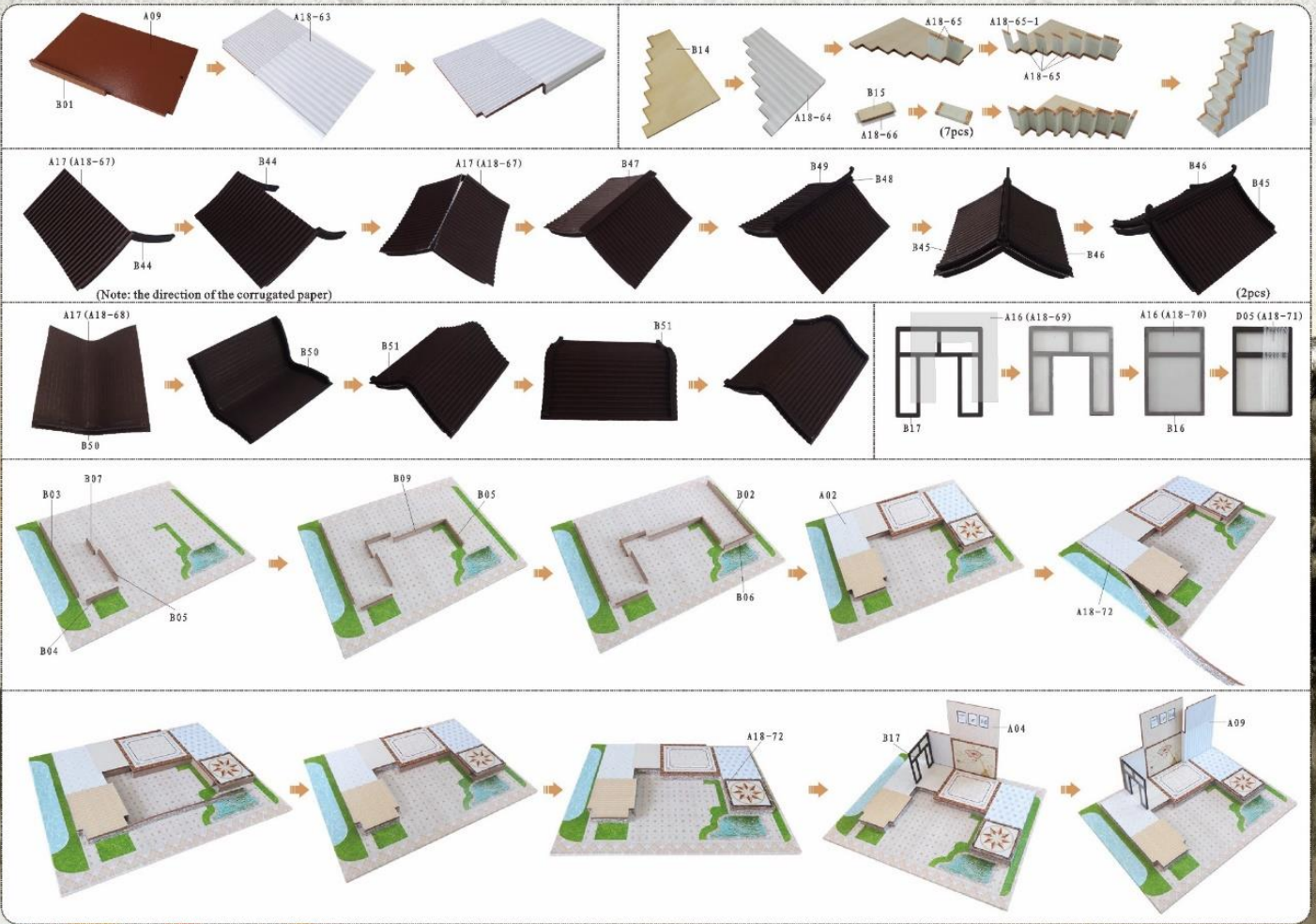
A18-59 → A12 → (2pcs) → B53 → B54 → B55 → B56 → B55 (Note: The outside of the face with the carving line.)

A18-60-1 → A18-60-2 → B20 → B24 → B23 → B25

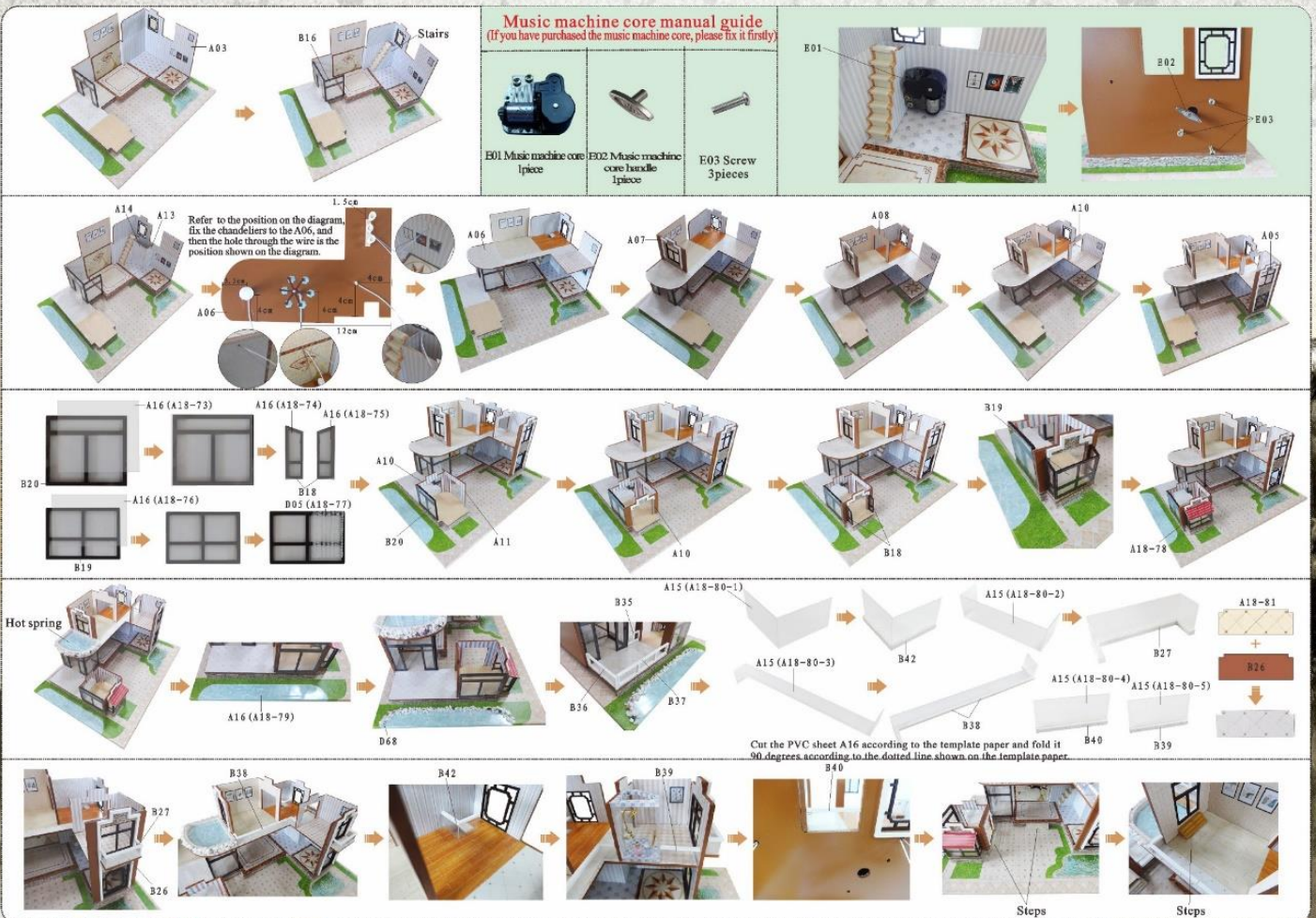
A18-61 → A13

A18-62 → A14

### Outer frame



### Outer frame





## How to assemble the battery holder

**Statement: the lamp wires cannot be inserted into the output socket.**

— Rechargeable batteries should be removed from the toy before charging  
— Different types of batteries cannot mix; Do not mix new batteries in use with semi-used batteries.

— Please notice the place of anode and cathode when pit in the batteries  
— Rechargeable batteries are not blunt electricity  
— Rechargeable batteries can only be charged under adult supervision

— Run out of battery should be removed from the toy  
— The power shall not be short circuit

### The alignment of the wires

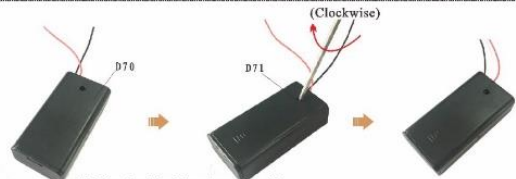


1. Trim all the LED wiring to the same length.



2. Use a craft blade to carefully skim over the plastic to bare the copper wire. Twist the same colour wire together.

3. Twist the following wire together:  
(1) BLACK wire from the battery box with the WHITE wire from LED bulb.  
(2) RED wire from the battery box with the GREY wire from LED bulb.



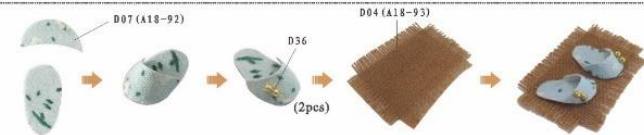
4. Roll and seal the duly twist copper with the white tape provided. Place the battery box in the allocated space.



Cut a small hole in the position shown.

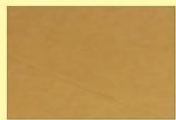
D44

(Refer to the same production method to make the plant A18-91)



Attach D07 on A18-92 and cut it out, make the slippers according to above shown.

## Installation of dust proof cover (For updated version, the parts need to be purchased separately)



E04 Transparent cover  
0.15\*24\*32 (1piece)



E05 Transparent cover  
0.15\*19\*32 (2pieces)



E06 Transparent cover  
0.15\*19\*23.7 (2pieces)

### Photo of Dust proof cover



1. Tear off kraft paper of each piece of transparent cover.

2. Paste E03, E04 and E05 together to complete the dust proof cover as shown.

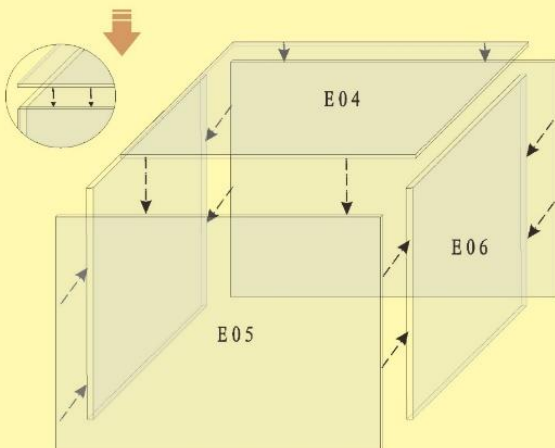


Photo Gallery



Attention: Please keep the instruction manual for future enquires after installation.