

# DIY handmade goods— Sweet Words



## NOTICE OF ASSEMBLE

### Bring your own tools



**Scissors:**  
Can be used to cut printed paper, cloth, etc.



**Screw Driver:**  
For fixing screws, mostly can be used to install doors and music components.



**Tweezers:**  
For holding small materials and rolling up iron wire.



**Cutter knife:**  
For peeling off power wire skin and cutting off materials.



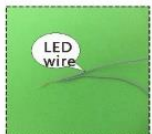
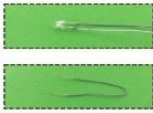
**Ruler:**  
For measuring materials to identify the number of materials so as to enhance work efficiency.

### ⚠ Warnings

- The product is not suitable for children under 14 years old. The should be under custody of adults when playing with the product.
- There are small parts, please do not swallow them for avoiding dangerous accidents.

### Making tips

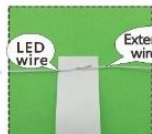
1. LED wiring indication: White=Positive; Grey=Negative.
2. Use a craft blade to carefully skim over the plastic to bare the copper wire.
3. For LED wiring extension, please refer to the below steps:



Twist the copper of both LED wire and extension wire together.



Do the same on the white wire.  
Remarks: Tie a knot at the end of the grey wire to differentiate the polarity.



Place the duly twist wire on the tapes provided.



Roll and wrap the wire.



Place another wire next to it.  
Remarks: DO NOT contact both copper wire to avoid short circuit.



Roll and wrap it together.

### Tips for assembling

1. Pictures shown on the package may be slightly different from the actual product.
2. Please use the provided tracing paper for cutting purpose to achieve the best outcome.
3. Product designs and specification may be subject to change without advance notice for purpose of making improvement.
4. Testing on LED function:



⊘ DO NOT contact the LED wire end direct to the battery cell.



✓ Use the provide battery holder. Make sue the correct polarity.

### How to assemble the remote control lamp



1. Material needed:  
1. Remote controller, receiver, LED bulb, tape and pieces button battery (provided)



2. Connect the red wire to grey wire. Connect the black wire to white wire.



3. Wrap the exposed wire with the tapes.



4. Insert the battery take notes on the polarity.



5. Bend the sheet iron on receiver as shown.



6. The remote controller aimed at receiver, press the ON button key to light.



13846 Material list (4-1)

Unit: cm

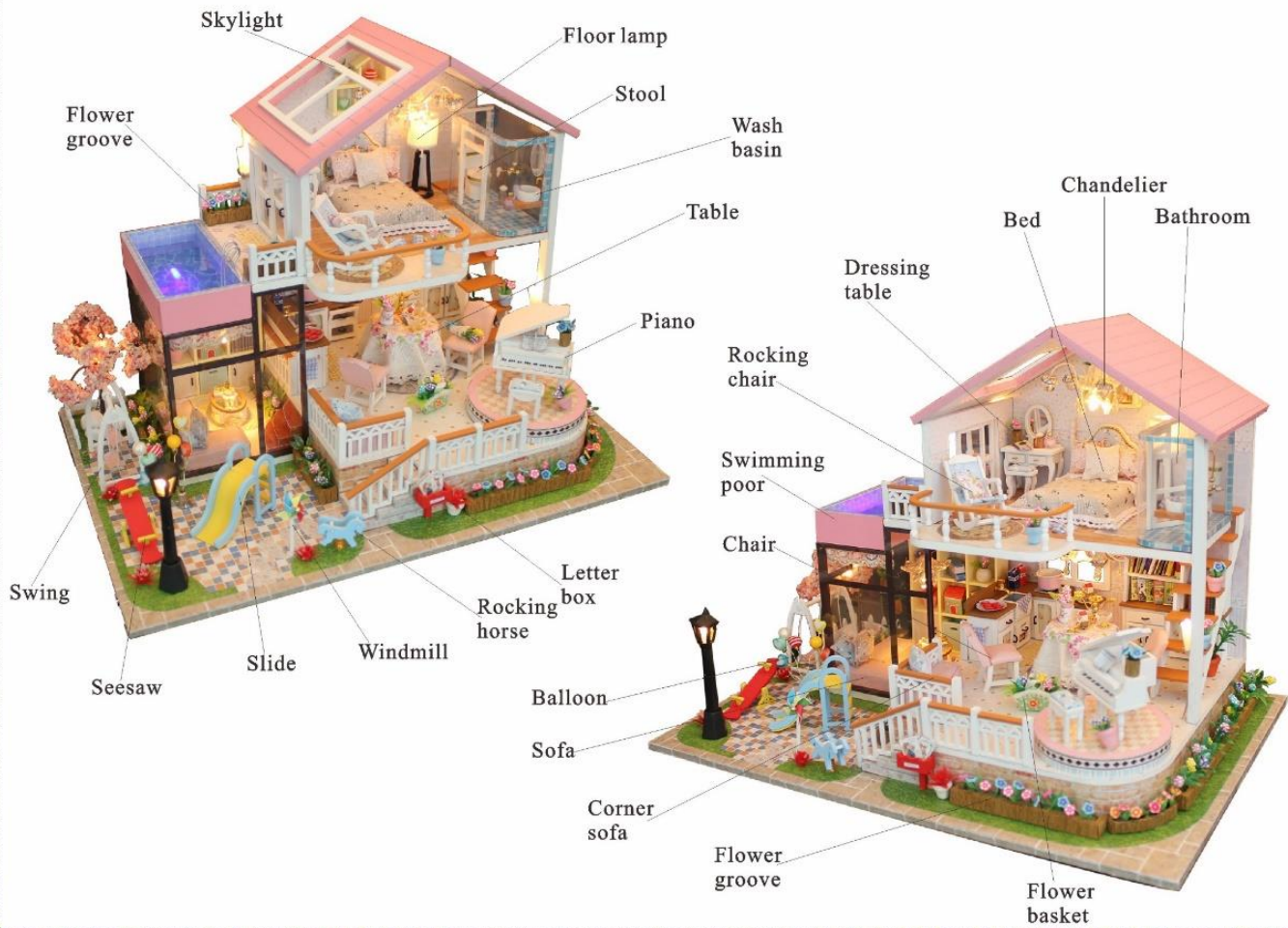
<b>Material Bag A</b>	 A01 0.5*21.5*32	 A02 0.3*19*22.5	 A03 0.3*2.2*14.4	 A04 0.3*2.2*4	 A05 0.3*2.2*3	 A06 0.3*2.2*8.2	 A07 0.2*2.2*14	 A08 0.3*16*17.8
 A09 0.5*13*18.5	 A10 0.5*5.8*10	 A11 0.5*8*10	 A12 0.5*10*11 side view	 A13 0.5*10*11 side view	 A14 0.3*4.2*9.2	 A15 0.3*3.2*7.2	Printing paper 3P A3+1P A4 Template paper 2P A3	
<b>Material Bag B</b>	 B01 0.2*1.4*5.3 2pcs	 B02 0.3*0.3*11 2pcs	 B03 0.3*0.3*9.5 5pcs	 B04 0.3*0.3*8.8 3pcs	 B05 0.3*0.3*4.7 6pcs	 B06 0.3*0.3*2.4 3pcs	 B07 0.2*5*5	 B08 Φ=0.3*5.5
 B09 0.2*1.4*12 2pcs	 B10 0.2*1.3*2.8 7pcs	 B11 0.5*1*3	 B12 0.5*2*3	 B13 0.5*3*3	 B14 0.5*3*4	 B15 0.4*0.4*2.5 8pcs	 B16 0.2*2.1*2.5 2pcs	 B17 0.2*2.1*3.6
 B18 0.2*2.1*4.2	 B19 0.2*2.1*6.2	 B20 0.2*4.5*4.6	 B21 0.2*0.4*2.5 2pcs	 B22 0.2*0.4*3.6	 B23 0.2*0.4*4.2	 B24 0.2*0.4*6.2	 B25 0.2*0.4*5.2	 B26 0.4*0.4*2.2 4pcs
 B27 0.2*1.8*2.2 2pcs	 B28 0.2*0.4*2.2 2pcs	 B29 0.2*3*9	 B30 9pcs	 B31 0.4*2*5 2pcs	 B32 0.4*2*9.2 2pcs	 B33 0.2*0.3*6.6	 B34 0.2*0.3*4.8 2pcs	 B35 0.2*3*4.8 2pcs
 B36 0.2*0.4*8.3 2pcs	 B37 0.2*0.4*6 2pcs	 B38 0.2*0.4*7.5	 B39 0.2*0.4*4	 B40 0.5*1*2.9	 B41 0.5*1.8*2.9	 B42 0.5*2.5*2.9	 B43 0.2*7*7	 B44 0.2*0.8*7
 B45 0.2*4.2*7	 B46 0.2*3*5.1	 B47 0.2*2.1*3	 B48 0.2*1.7*3 2pcs	 B49 0.2*3*6.6	 B50 0.2*0.7*1.8	 B51 0.2*1.8*1.8	 B52 0.2*1.6*1.8	 B53 0.2*1.5*2.7 3pcs
 B54 0.2*1.4*2	 B55 0.2*1*2 2pcs	 B56 0.2*1*1 2pcs	 B57 0.2*1.8*2.3	 B58 0.2*1.5*2.6 2pcs	 B59 0.2*1.5*1.7 2pcs	 B60 0.2*1.2*2.1 2pcs	 B61 0.2*1.5*2	 B62 0.2*1.8*6.7

13846 Material list (4-2)

Unit: cm

 B63 0.2*3*6.5	 B64 0.2*1.3*3 2pcs	 B65 0.2*0.7*2.5	 B66 0.2*1.2*1.8 2pcs	 B67 0.2*1.5*5.5 2pcs	 B68 0.2*1.5*3.5 2pcs	 B69 0.2*1.8*4.1	 B70 0.2*1.5*2.7	 B71 0.2*1.5*2.7
 B72 0.2*4*4	 B73 Φ=0.5*2.8	 B74 0.2*2*2.4 2pcs	 B75 0.2*1.8*2 2pcs	 B76 0.2*1.7*2.2 4pcs	 B77 0.2*0.3*1.4 4pcs	 B78 0.4*2.8*4	 B79 0.5*3*4.2	 B80 0.2*3.2*4.5
 B81 0.2*3.5*4.5	 B82 0.2*1.3*3.5	 B83 0.2*1.3*2.2	 B84 0.2*1.3*1.9	 B85 0.2*1.3*1.6	 B86 0.2*1.3*1.8	 B87 0.2*1.1*4	 B88 0.2*0.8*4	 B89 0.2*0.6*3.6 2pcs
 B90 0.2*0.4*3.6	 B91 0.2*0.4*0.7 2pcs	 B92 0.2*0.2*1.2 2pcs	 B93 0.2*0.5*0.8	 B94 Φ=0.2*2.6	 B95 0.2*1.1*2	 B96 0.2*1.6*1.8 2pcs	 B97 0.2*0.3*0.5 2pcs	 B98 0.5*4*6
 B99 0.4*1.8*3.8 2pcs	 B100 0.2*2.2*3	 B101 0.2*1*2.4	 B102 0.2*1*2.4	 B103 0.2*1.5*2 6pcs	 B104 0.2*1.5*7.3 4pcs	 B105 0.2*1.5*6.8 2pcs	 B106 0.2*2*2.3 2pcs	 B107 0.2*1.9*1.9 2pcs
 B108 0.2*1*1.9 2pcs	 B109 0.2*1*1.5	 B110 0.3*3.1*5.2	 B111 0.3*2.5*4	 B112 0.3*3.2*7.2	 B113 0.3*0.3*5.2 2pcs	 B114 0.3*2*2	 B115 0.5*1.5*1.5	 B116 0.2*1.5*2
 B117 0.2*4.5*4.5	 B118 2pcs	 B119 0.2*4.5*6	 B120 0.2*1.2*4.5	 B121 0.2*1*6 2pcs	 B122 0.3*2.7*3.5 2pcs	 B123 0.2*0.7*1.1 2pcs	 B124 0.2*0.5*1.2 2pcs	 B125 0.2*2*3.6
 B126 0.2*2.6*3.2	 B127 0.2*1.2*1.9	 B128 0.2*0.4*1.6 4pcs	 B129 0.2*1.8*1.8	 B130 0.2*1.8*1.8	 B131 Φ=0.3*1.2	 B132 0.2*0.8*2.8 3pcs	 B133 0.2*1.8*1.8	 B134 0.2*3.8*4 2pcs
 B135 0.2*0.6*1.8	 B136 0.2*0.3*1.8 4pcs	 B137 0.2*1*3.8 2pcs	 B138 0.2*1*1.4 5pcs	 B139 0.2*1*1 2pcs	 B140 0.2*0.8*1.8 2pcs	 B141 0.2*0.4*3	 B142 0.2*0.5*0.5 2pcs	 B143 0.2*0.5*1.8

# Product information



2

## Kitchen Cabinet

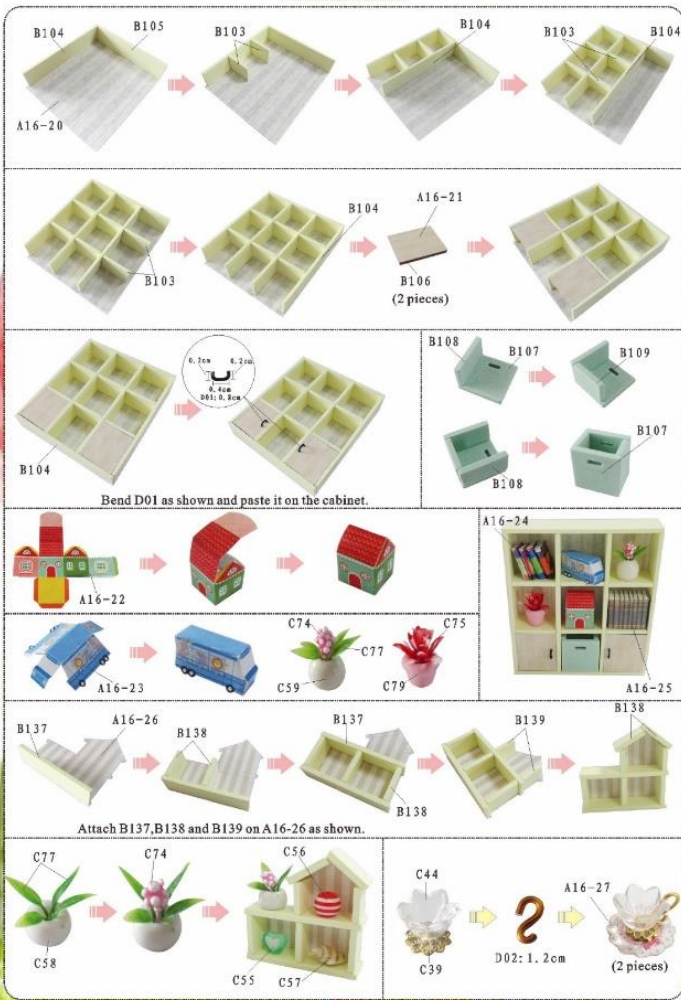


## Roaster



3

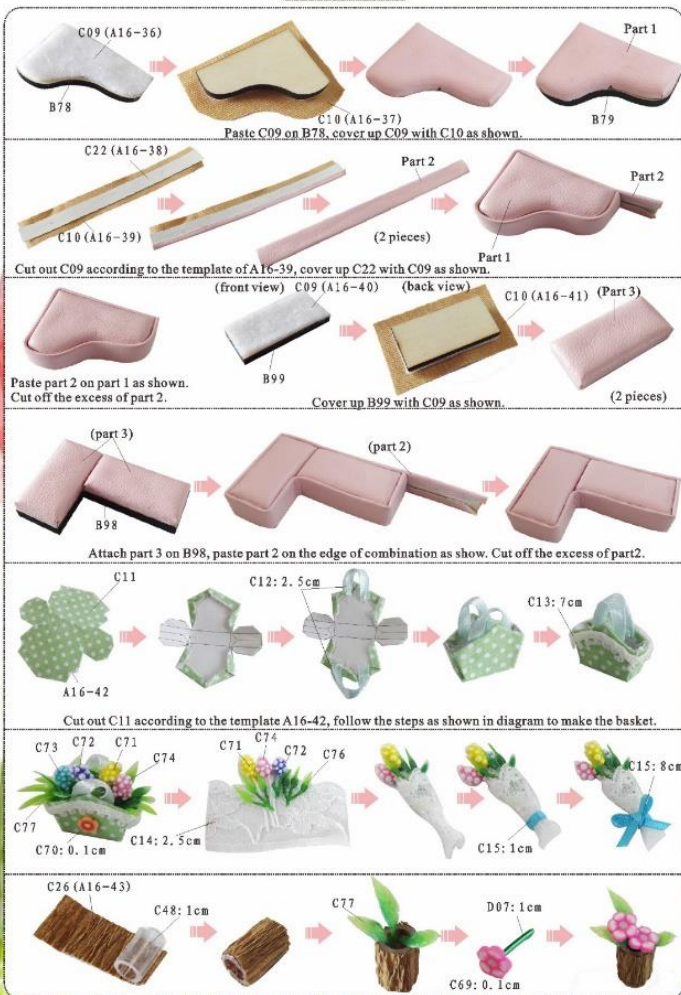
## Cabinet



## Round table



## Sofa



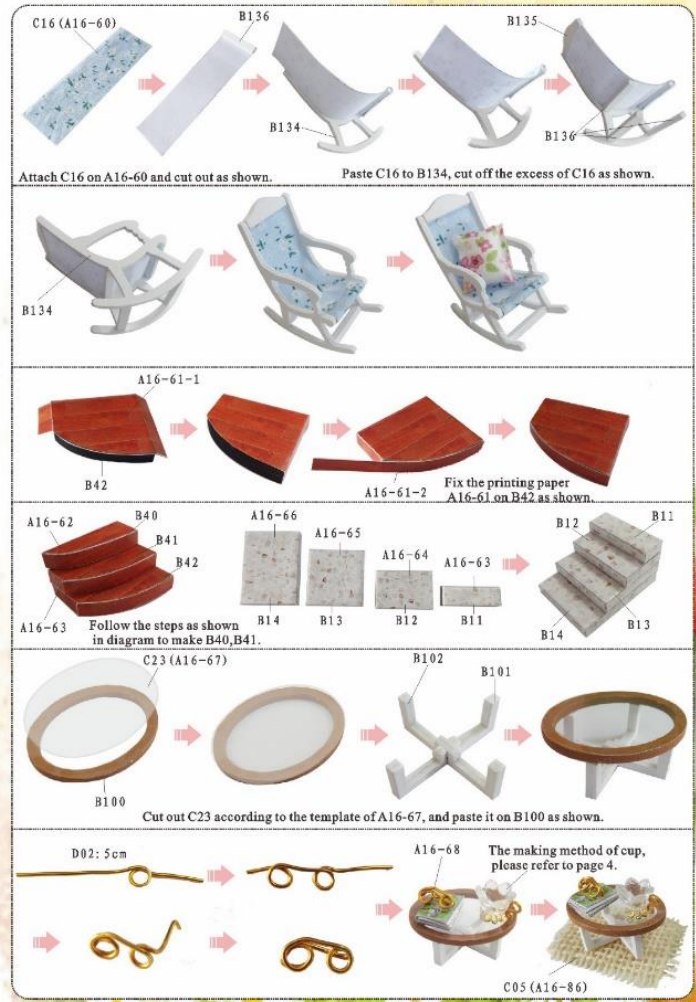
## Dressing Table



## Bed

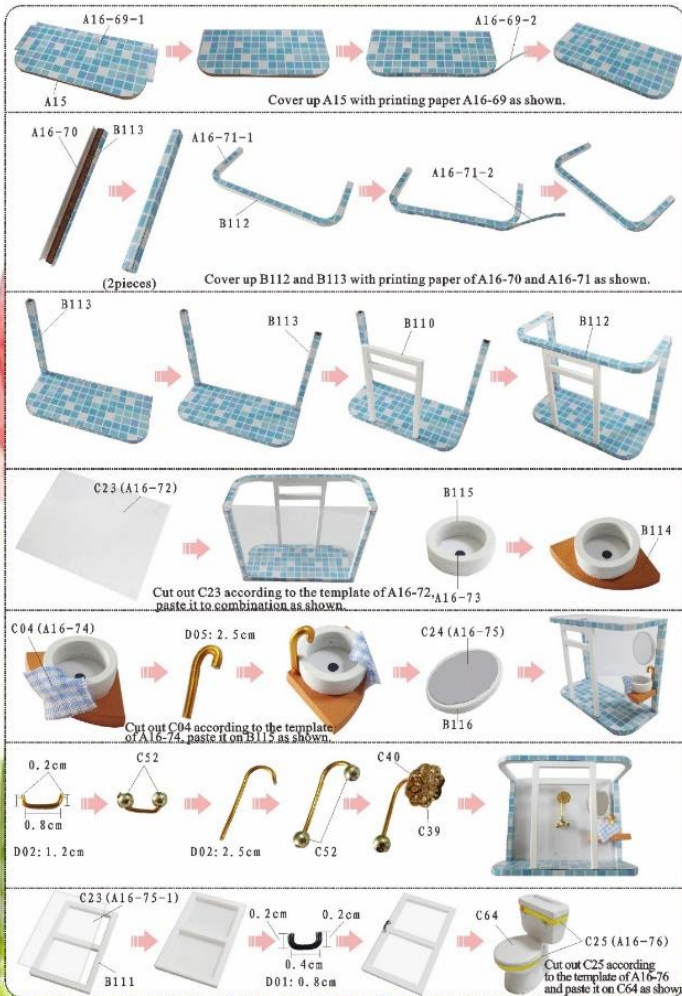


## Rocking-chair

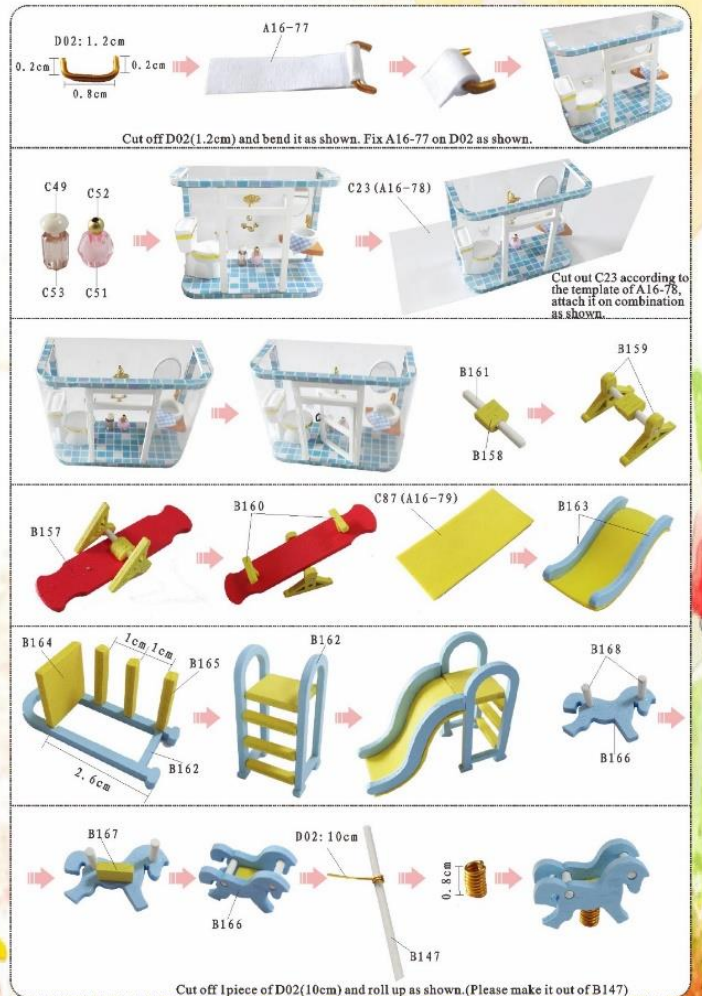


6

## Bathroom

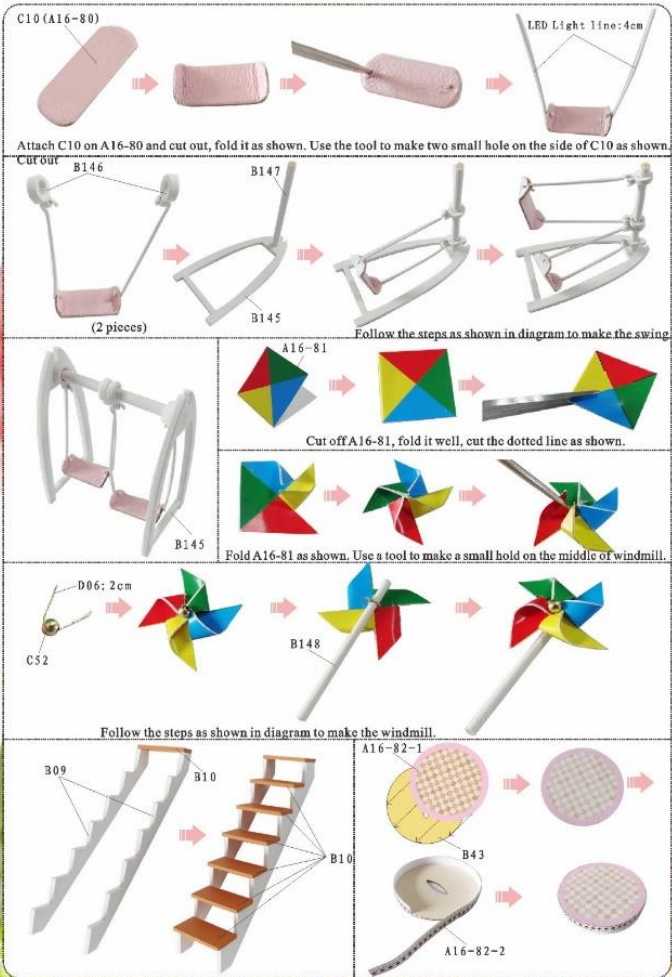


## Bathroom



7

## Swing

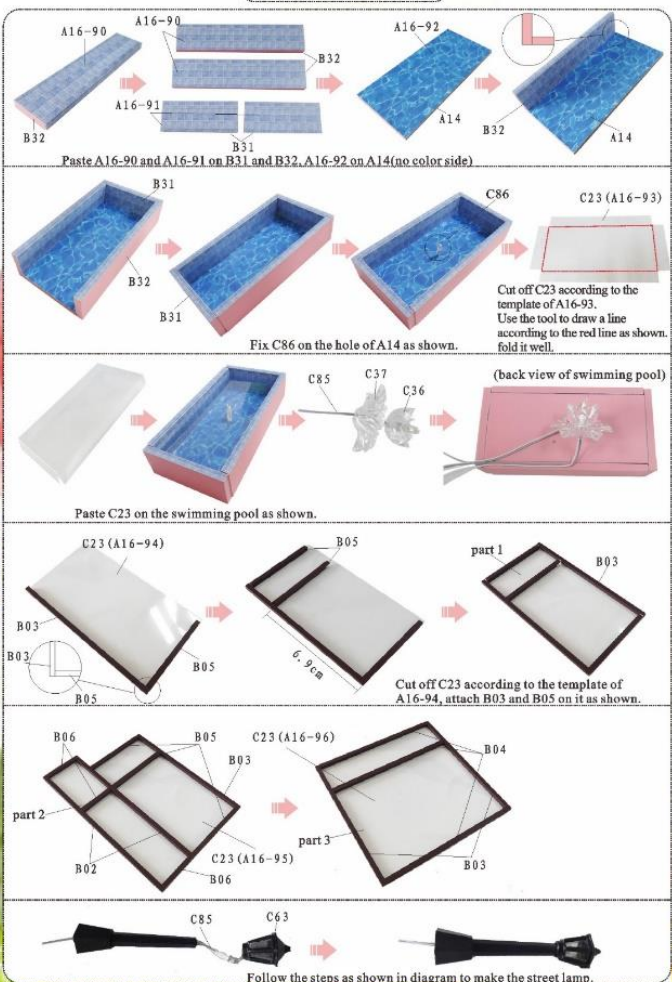


## Piano

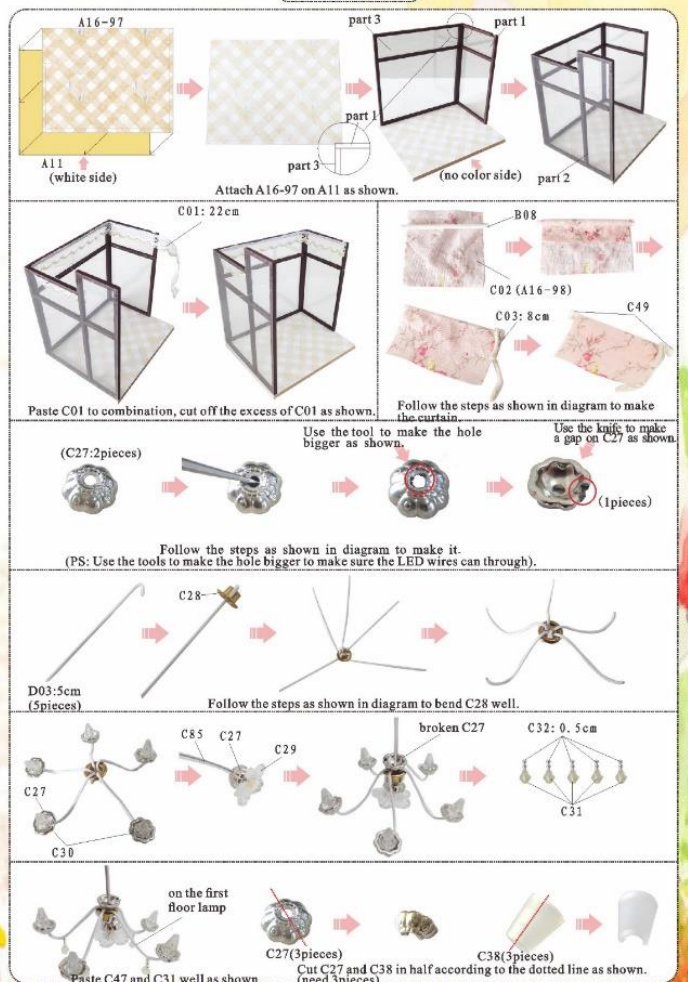


8

## Swimming pool

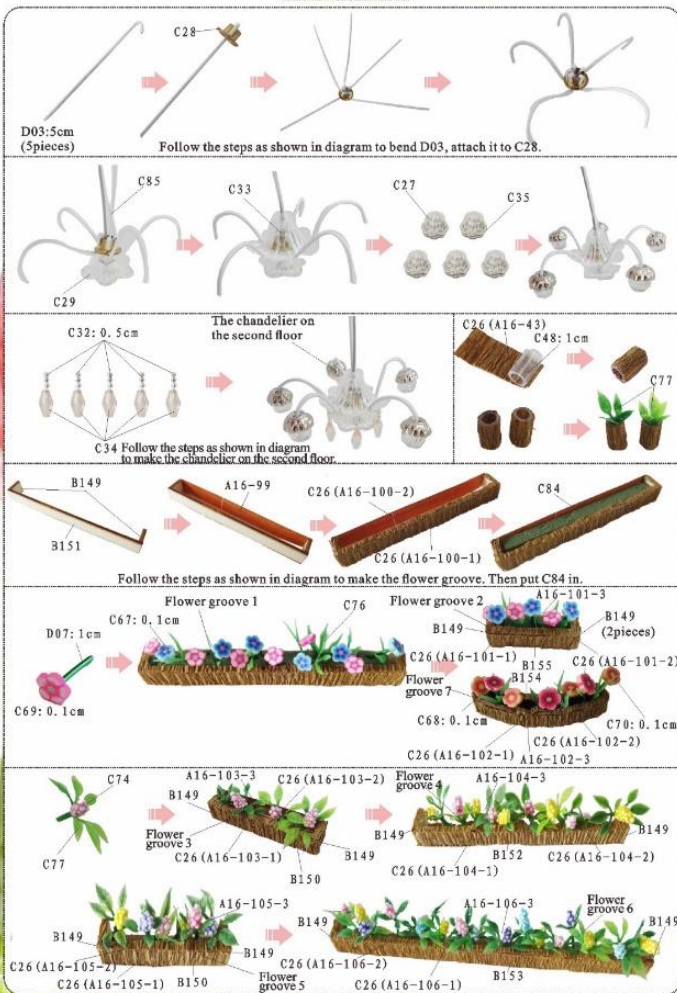


## Grass room

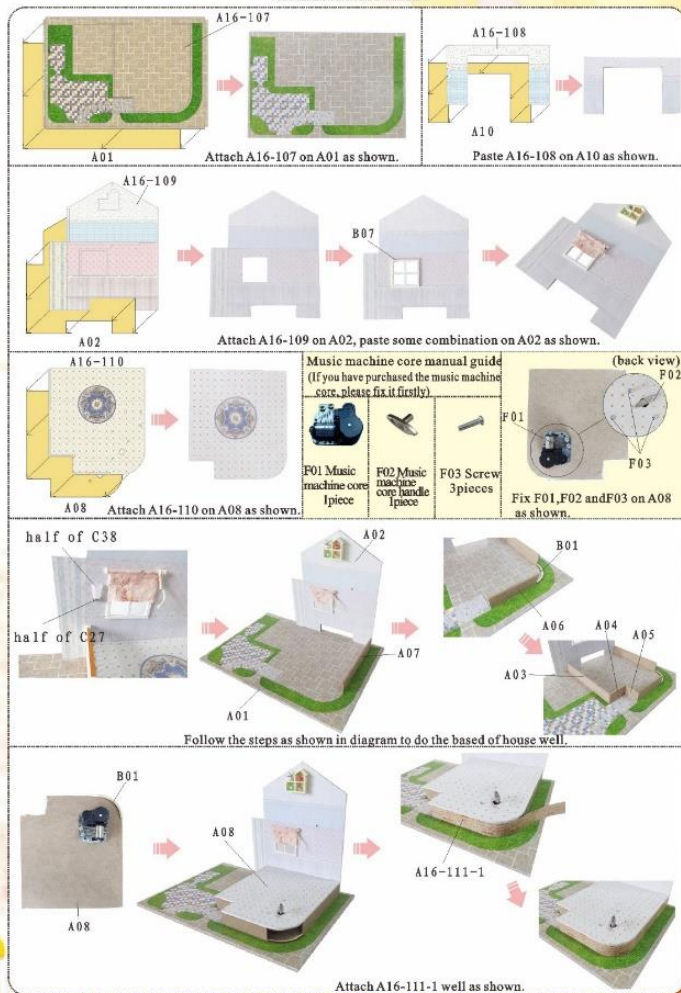


9

## Chandelier

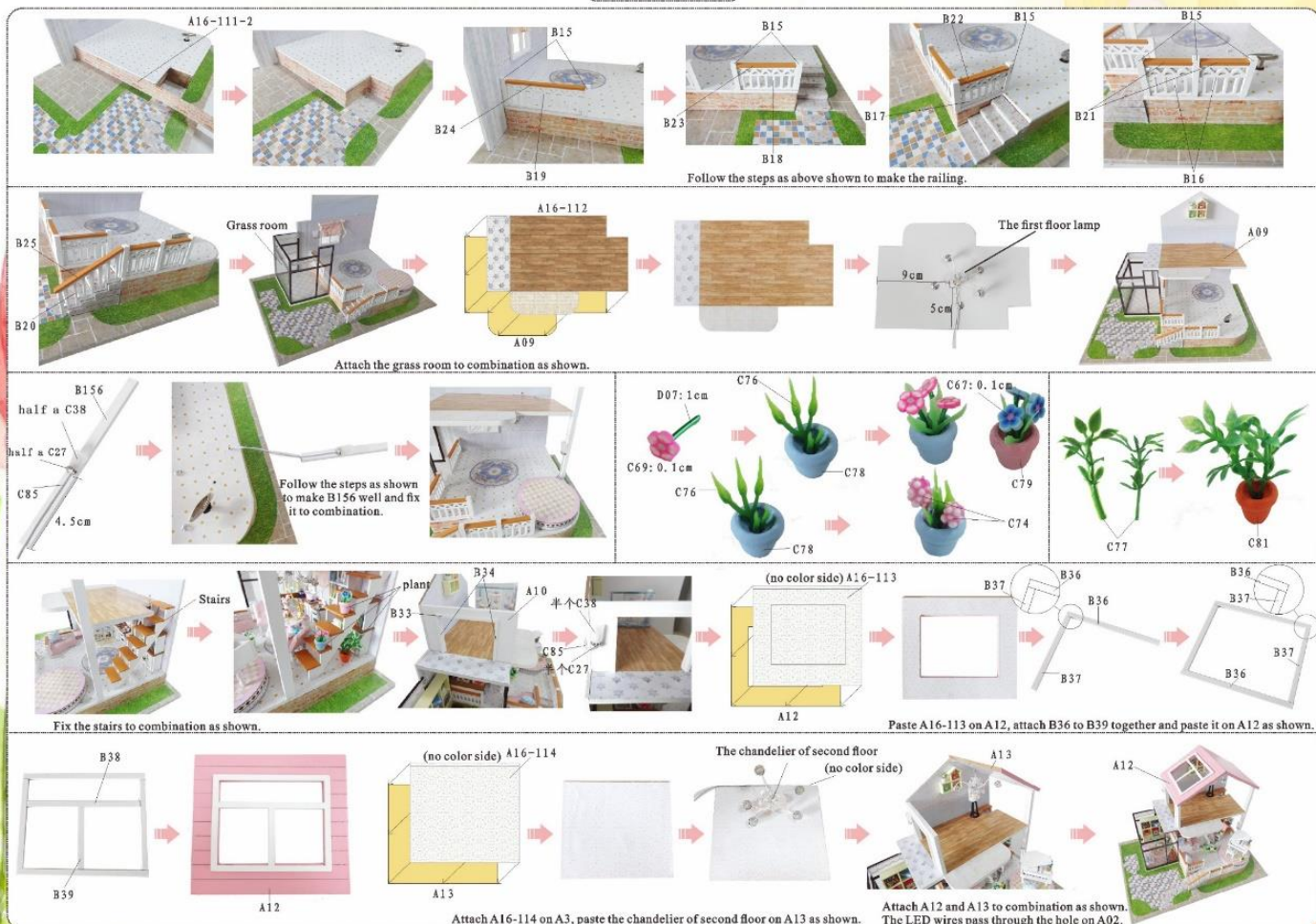


## Outer Frame



10

## Outer Frame



11



## Outer Frame

**Step 1:** Cut off C23 according to the template of A16-115, attach it on B35 as shown.

**Step 2:** Fix the flower groove 3 and steps to combination as shown.

**Step 3:** Attach C05 (A16-116) to the combination.

**Step 4:** Attach C05 (A16-116) to the combination.

**Step 5:** Attach C05 (A16-116) to the combination.

**Step 6:** Attach C05 (A16-116) to the combination.

**Step 7:** Attach C05 (A16-116) to the combination.

**Step 8:** Attach C05 (A16-116) to the combination.

**Step 9:** Attach C05 (A16-116) to the combination.

**Step 10:** Attach C05 (A16-116) to the combination.

**Step 11:** Attach C05 (A16-116) to the combination.

**Step 12:** Attach C05 (A16-116) to the combination.

**Step 13:** Attach C05 (A16-116) to the combination.

**Step 14:** Attach C05 (A16-116) to the combination.

**Step 15:** Attach C05 (A16-116) to the combination.

**Step 16:** Attach C05 (A16-116) to the combination.

**Step 17:** Attach C05 (A16-116) to the combination.

**Step 18:** Attach C05 (A16-116) to the combination.

## How to connect to battery box

**Statement: the lamp wires cannot be inserted into the output socket.**

- Please notice the place of anode and cathode when pit in the batteries
- Rechargeable batteries are not blunt electricity
- Rechargeable batteries can only be charged under adult supervision
- Rechargeable batteries should be removed from the toy before charging
- Different types of batteries cannot mix; Do not mix new batteries in use with semi-used batteries.
- Run out of battery should be removed from the toy
- The power shall not be short circuit

- Trim all the LED wiring to the same length.
- Use a craft blade to carefully skim over the plastic to bare the copper wire. Twist the same colour wire together.
- Twist the following wire together:
  - (I) BLACK wire from the battery box with the WHITE wire from LED bulb.
  - (II) RED wire from the battery box with the GREY wire from LED bulb.
- Roll and seal the duly twist copper with the white tape provided. Place the battery box in the allocated space.

## Installation of dust proof cover (For updated version, the parts need to be purchased separately)

**F04** Transparent cover 0.15\*1.5\*32 (1piece)

**F05** Transparent cover 0.15\*24\*32 (2pieces)

**F06** Transparent cover 0.15\*21.3\*24 (2pieces)

- Tear off kraft paper of each piece of transparent cover.
- Paste F04, F05, and F06 together to complete the dust proof cover as shown.

**Photo of Dust proof cover**

Photo Gallery



**Attention: Please keep the instruction manual for future enquires after installation.**