

# Romantic country



## 3839 Manual Guide

### Chair



### Table



### Bicycle



# Notes before assembling

## Bring your own tools



**Scissors:**  
Can be used to cut printed paper, cloth, etc.



**Screw Driver:**  
For fixing screws, mostly can be used to install doors and music components.



**Tweezers:**  
For holding small materials and rolling up iron wire.



**Cutter knife:**  
For peeling off power wire skin and cutting off materials.



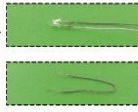
**Ruler:**  
For measuring materials to identify the number of materials so as to enhance work efficiency.

## Warnings

- The product is not suitable for children under 14 years old. The should be under custody of adults when playing with the product.
- There are small parts, please do not swallow them for avoiding dangerous accidents.
- Please also pay attention to the sharp-pointed materials to avoid injuries.

## Making tips

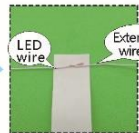
1. LED wiring indication: White = Positive; Grey = Negative.
2. Use a craft blade to carefully skim over the plastic to bare the copper wire.
3. For LED wiring extension, please refer to the below steps:



Twist the copper of both LED wire and extension wire together.



Do the same on the white wire. Remarks: Tie a knot at the end of the grey wire to differentiate the polarity.



Place the duly twist wire on the tapes provided.



Roll and wrap the wire.



Place another wire next to it. Remarks: DO NOT contact both copper wire to avoid short circuit.



Roll and wrap it together.

## Tips for assembling

1. Pictures shown on the package may be slightly different from the actual product.
2. Please use the provided tracing paper for cutting purpose to achieve the best outcome.
3. Product designs and specification may be subject to change without advance notice for purpose of making improvement.
4. Testing on LED function:



DO NOT contact the LED wire end direct to the battery cell.



Use the provide battery holder. Make sue the correct polarity.

## How to assemble the battery holder



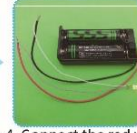
1. Material and tools needed:  
- Battery holder, LED bulb, tape, screw driver and 2 piece AA size battery (not provided)



2. Use screw driver and take the lid off from the battery holder.



3. Insert the battery take notes on the polarity.  
+ positive  
- negative



4. Connect the red wire to grey wire. Connect the black wire to white wire.



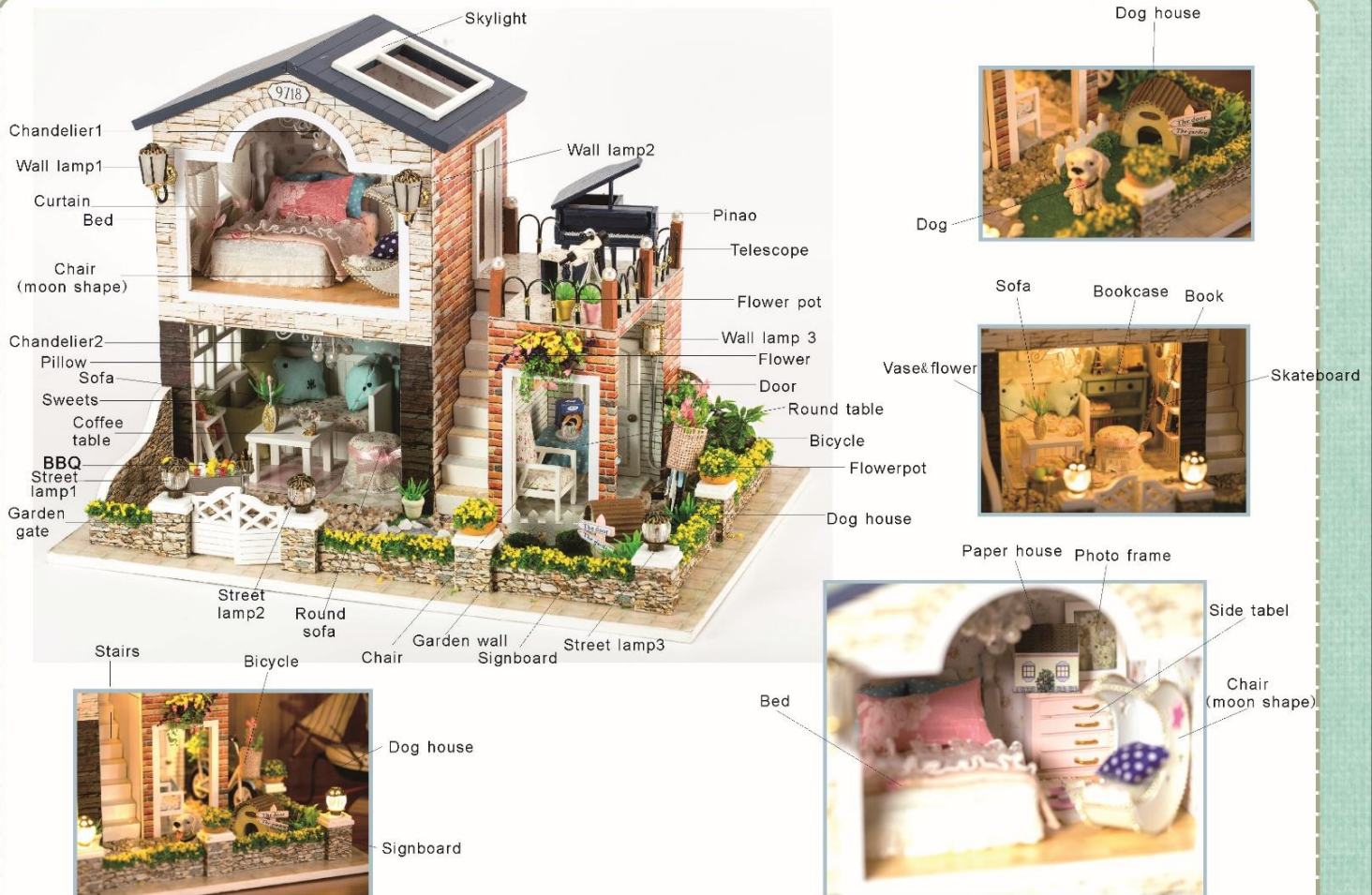
5. Wrap the exposed wire with the tapes.



6. Place the box lid and fastness with screw driver.

1

# Product Introduction



2



# Material list

Unit: cm

<b>Material Bag A</b>									
		A01 wooden board (original) 0.5*21.2*28.8 1piece	A02 wooden board (original) 0.5*19.7*21.4 1piece	A03 wooden board (original) 0.5*9.7*16.9 1piece	A04 wooden board (original) 0.5*9.7*16.9 1piece	A05 wooden board (original) 0.5*9.7*12 1piece	A06 wooden board (original) 0.3*4.2*13 1piece	A07 wooden board (original) 0.3*1.5*15.5 1piece	A08 wooden board (original) 0.3*1.5*10 1piece
A09 wooden board (original) 0.5*8.4*10.7 1piece	A10 wooden board (original) 0.5*6.7*9 1piece	A11 wooden board (original) 0.3*2.5*9 1piece	A12 wooden board (original) 0.3*6.1*9 1piece	A13 wooden board (original) 0.3*7.5*9 1piece	A14 wooden board (original) 0.3*4.9*7.2 1piece	A15 wooden board (original) 0.5*4.8*7.7 1piece	A16 wooden board (original) 0.5*3.8*4.8 1piece	A17 wooden board (original) 0.5*1.3*3.2 1piece	
				<b>Material Bag B</b>					
A18 wooden board (original) 0.5*1.3*6.2 2pieces	A19 wooden board (original) 0.5*1.3*7.8 2pieces	A20 wooden board (blue) 0.5*8.1*11.1 1piece	A21 wooden board (blue) 0.5*8.1*11.1 1piece	A22 printing paper 1set (total 4pieces)		B01 wooden log (original) 1.2*1.5*2 5pieces	B02 wooden log (white) 0.2*1.2*1.5 5pieces	B03 wooden log (white) 0.3*1.5*1.8 5pieces	B04 wooden bead (white) 0.2*4.5*6.2 1pieces
B06 wooden log (original) 0.5*1*5.2 1pieces	B07 wooden log (original) 0.5*6.2*7.3 1pieces	B08 wooden bead (white) 0.5*4.2 2pieces	B09 wooden bead (pink) 0.2*1.7*3.8 2pieces	B10 wooden log (pink) 0.15*2.6*3.5 1pieces	B11 wooden log (pink) 0.15*1.2*2.6 2pieces	B12 wooden log (pink) 0.15*0.5*3.1 4pieces	B13 wooden bead (white) 0.15*3*3 2pieces	B14 wooden bead (white) 0.15*2.1*2.7 1pieces	
B15 wooden bead (white) 0.15*1.3*2 1pieces	B16 wooden bead (black) 0.15*1.7*1.7 1pieces	B17 wooden bead (yellow) 0.15*1.7*1.7 1pieces	B18 wooden bead (white) 0.2*1.3*4.5 2pieces	B19 wooden log (original) 0.3*1.4*3.3 1pieces	B20 wooden bead (white) 0.4*1.3*6.9 1pieces	B21 wooden bead (white) 0.4*6.4*6.9 1pieces	B22 wooden log (white) 0.4*0.4*4.6 1pieces	B23 wooden bead (white) 0.2*0.8*6.9 1pieces	
B24 wooden bead (white) 0.2*3.2*4.6 2pieces	B25 wooden bead (white) 0.2*2.3*2.8 2pieces	B26 wooden bead (white) 0.3*6.3*7.7 1piece	B27 wooden log (white) 0.3*0.5*7 2pieces	B28 wooden log (white) 0.2*0.4*3.7 1pieces	B29 wooden log (white) 0.2*0.4*6.8 2pieces	B30 wooden log (brown) 0.5*0.5*2 5pieces	B31 wooden bead (dark blue) 0.2*3.2*4.5 1piece	B32 wooden bead (dark blue) 0.2*3.5*4.5 1piece	
B33 wooden bead (dark blue) 0.2*1.3*3.5 3pieces	B34 wooden bead (dark blue) 0.2*1.3*1.8 1piece	B35 wooden log (dark blue) 0.2*1.3*2.2 1piece	B36 wooden log (dark blue) 0.2*1.3*1.9 1piece	B37 wooden log (dark blue) 0.2*1.3*1.6 1piece	B38 wooden log (dark blue) 0.2*1.1*4 1piece	B39 wooden log (dark blue) 0.2*0.8*4 1piece	B40 wooden log (dark blue) 0.2*0.6*3.6 2pieces	B41 wooden log (dark blue) 0.2*0.4*3.6 1piece	
B42 wooden log (dark blue) 0.2*0.4*0.7 2pieces	B43 wooden log (dark blue) 0.2*0.3*1.2 2pieces	B44 wooden log (dark blue) 0.2*0.5*0.8 1piece	B45 wooden log round shape (dark blue) 0.2*2.6 1piece	B46 wooden bead (dark blue) 0.8*1.8 3pieces	B47 wooden log (dark blue) 0.2*1*1.6 2pieces	B48 wooden log (original) 0.2*1.1*2 1piece	B49 wooden bead (original) 0.8*1.3*2.5 8pieces	B50 wooden log (original) 0.2*2.5*11.2 1piece	

<b>Material Bag C</b>										
		C01 wooden log (white) 0.2*4.1*6.6 1piece	C03 wooden log (white) 0.2*1.4*6.6 1piece	C04 wooden log (white) 0.3*3.3*3.7 2pieces	C05 wooden log (original) 0.4*3.3*6.5 1piece	C06 wooden log round shape (original) 2.2*2.2*1.8 1piece	C07 wooden log (white) 0.3*3.2*3.2 1piece	C08 wooden log (white) 0.4*0.4*2 4pieces		
C09 wooden bead (white) 0.2*1.4*2.7 2pieces	C10 wooden log (white) 0.2*1*2.5 1piece	C11 wooden log (white) 0.2*0.8*1.7 1piece	C12 wooden log (white) 0.2*1*1.7 1piece	C13 wooden log (blue) 0.2*1.5*4.3 1piece	C14 wooden log (blue) 0.2*1.3*4 2pieces	C15 wooden log (blue) 0.2*1*3.7 1piece	C16 wooden log (blue) 0.2*1.3*3.7 2pieces	C17 wooden log (blue) 0.2*0.8*1.7 2pieces		
C18 wooden log (pink) 0.2*0.7*3 3pieces	C19 wooden log (pink) 0.2*3*4 1piece	C20 wooden bead round shape (white) 0.2*2.4*2.4 1piece	C21 wooden log (white) 0.3*3.1*6.5 1piece	C22 wooden bead (white) 0.2*2.7*3.7 2pieces	C23 wooden log (white) 0.2*0.3*2.1 4pieces	C24 wooden log (original) 0.2*2*2 1piece	C25 wooden log (original) 0.2*2*2.4 1piece	C26 wooden bead round shape (original) 0.2*0.2*2.6 1piece		
C27 wooden log cylindrical shape (white) 0.4*0.4*1.8 1piece	C28 wooden log cylindrical shape (white) 0.4*0.4*0.8 1piece	C29 wooden bead (white) 0.2*2.3*2.2 2pieces	C30 wooden bead (white) 0.4*2.4*3.6 1piece	C31 wooden bead round shape (white) 0.2*1.8*1.8 2pieces	C32 wooden bead (white) 0.2*0.6*3.2 1piece	C33 wooden bead (white) 0.2*1.4*2 1piece	C34 wooden bead (white) 0.2*0.6*1.5 1piece	C35 wooden bead (white) 0.2*0.7*1.7 1piece		
C36 wooden bead (blue) 0.2*0.9*2.2 1piece	C37 wooden bead (blue) 0.2*0.9*1.3 1piece	C38 wooden bead (blue) 0.2*0.8*2.2 2pieces	C39 wooden bead (milk white) 0.2*2.5*2.8 1piece	C40 wooden bead (milk white) 0.2*2.5*2.8 1piece	C41 wooden log (milk white) 0.2*1.3*1.9 2pieces	C42 wooden bead (white) 0.2*1.6*3.8 1piece	C43 wooden bead (pink) 0.2*0.4*2 2pieces	C44 wooden bead (pink) 0.2*0.4*3 1piece		
	<b>Material Bag D</b>									
C45 resin flower pot 2pieces			D01 non-woven fabrics (white) 14*16 1piece	D02 short velvet (white) 9*11 1piece	D03 Floral cloth (pink) 10*14 1piece	D04 lace length:42cm 1piece	D05 adequate amount of cotton	D06 cloth (blue/white) 7*12 1piece	D07 Floral cloth (pink/white) 5*6 1piece	D08 cloth (dark blue/white) 3*6 1piece
D09 Cloth (light blue/black) 6*6 (1piece)	D10 Cloth (light yellow) 6*6 (1piece)	D11 Cardboard (white) 5*11 (1piece)	D12 Floral cloth (white/pink) 12*14 1piece	D13 Sponge paper (pink) 2*2 (1piece)	D14 Linen cloth (white) 3*5 (1piece)	D15 Gauze (white) 7*11 (1piece)	D16 Ribbon (pink) length:30cm (1piece)	D17 Linen cloth 7*9 1piece		
					<b>Material Bag E</b>					
D18 Sponge paper (yellow) 3*3 (1piece)	D19 non woven fabrics (brown) 3*3 1piece	D20 Corrugated paper (brown) 3*9 1piece	D21 Paper rope (yellow) length:15cm (1piece)	D22 Paper (silver) 3*8 (1piece)			E01 Iron wire (golden) length:8cm (1piece)	E02 Thin iron wire (black) length:110cm (1piece)	E03 Thin iron wire (golden) length:65cm (1piece)	


5

### Outer Frame

- Attach A22-1 on A02, A22-2 on A03, A22-3 on A04 as shown. (Don't cut off the excess printing paper)
- Following above steps to paste printing paper to corresponding wooden board as shown.
- Attach A22-7 on A05 as shown. Paste it to the combination as shown.
- Attach A06 A07 and A08 together as shown. Attach A22-8 on the combination as shown.
- Attach A22-9 on A09 as shown. Paste it to the combination as shown.
- Attach A22-10 on A12, a22-11, 12 on both side of A13 as shown. Attach A13 to A12 as shown.
- Attach A22-13 on the combination as shown.
- Attach A22-14 and A22-15a on A10 as shown. Attach A10 to the combinatin as shown.
- Attach A22-15b on A14. Attach it to the combinaiton as shown.
- Attach A22-17 on the two side of A16 as shown. Attach A22-16 on the two side of A15 as shown. Attach A15 and A16 to the combination as shown.

6

### Garden Wall

**1**

Attach B02 on B03 as shown. (You need to create 5 pieces)

Attach A22-18 to B01 as shown. (You need to create 5 pieces)

Attach two combination together as shown.

**2**

Attach A22-19 on A17, A22-20 on A18, A22-21a on A19 as shown.

Attach the combination well as shown.

Attach two C29 to garden wall as shown and the garden gate is done.

Attach the combination to combination as shown and the garden wall is done.

### Beside table

**1**

Attach B09, B10, B11, B12 together as shown.

**2**

Cut E01 into 5 pieces for long 0.8cm, bend it according to the diagram. Paste them to the table as shown.

Attach B14 to A22-23 as shown. Fold A22-24 and attach it well as shown. Paste them on the table as shown.

### Base & Housetop

**1**

Attach A20 to A21 as shown.

Paste the top to house on the combination as shown.

Apply glue onto A01 as shown. Attach A22-21b on A01 as shown.

Attach the combination to A01 as shown.

Attach A22-22 on the house as shown.

### Bed

**1**

Attach D01 on B07 as shown.

Cover up the combination with D02 as shown.

Cover up B06 with D02 as shown.

Attach the combination to combination as shown.

Cut D04 in half as shown.

Attach D04 to the side of bed foam.

Cut D11 according to the A22-39. Attach D01 on D11 and cut it as shown. Cover up D11 with D03 as shown.

Attach the combination to combination as shown and the bed is done.

### Chair moon shape

**1**

Cut D11 into size of 1.8\*10.7cm, attach it on B18 as shown.

Attach F01 to the combination as shown.

**2**

Attach D01 on B19 as shown.

Cover up B19 with D12 as shown.

Cut F02 into 1mm thickness and attach to B18 as shown.

### Bookshelve

**1**

Attach C18 on C19 as shown.

**2**

Fold the printing paper A22-25 in "z" as above shown to make book.

Need to do 8 pieces books. Attach them to the bookshelve as shown.

### Window

**1**

Attach B20 to the house as shown.

**2**

Attach B26 to the top of house as shown.

**3**

Attach B21, B22 and B23 together as shown.

**4**

Attach two B24 together as shown. Attach them to the combination as shown.

**5**

Attach B25 to the combination as shown.

### Bookcase

**1**

Attach C14, C15, C16, C17 and F05 together as shown.

**2**

Fold A22-26 according to diagram to create a book.

**3**

Fold the printing paper A22-27 in "z" as above shown to make book.

Attach F20, F19 and books on the bookcase as shown.

### Telescope

1 F06 F07 F06 E04 Part1 E05 Part2  
 F04 E05 F05 F06

Following above step to make the part1 and part2 as shown.

2 (Bend it) Part3  
 30mm 30mm

Cut E04 into one size 30mm and one size 60mm, bend 60mm E04 as shown and attach it to 30mm E04 to create part3 as shown.

Attach part1, part2 and part3 as shown and telescope is done.

### Coffee table

1 C07 G01 F11 G08  
 C08

Attach C08 to C07 as shown.

2 G01 E01 F12 F13 A22-49  
 7mm

Cut E01 into size of 1cm for 2pieces. Bend it the shape as shown.

Insert G01 to the hole of F11 as shown.

Attach F12 to F13.

Aattach E01 as shown.

### Shelve

1 C09 C11 C10 F14 F15 F16 F18 F17 F19  
 C12 C12

Attach C09, C11 and C12 together as shown.

Put about 20pieces F14, F15 to F16 as shown.

2 E03 F16 (Candy)

Tie F16 with E03 as shown and cut off the excess F16 as shown.

Following the step to make other deco.

### Lamp

1 G14 F39 F45 F26 G14 F28 G14  
 F45 F39 F26

(You need to do three pieces.)

Paste F39, F45, F26 and G14 to make the street lamp.

Attach the street lamps to the garden wall as shown.

2 E02 F40 F39 F42 G14 F41  
 13mm

Cut four pieces of E02 (13mm each) and paste them on F40 as shown.

Attach F39 to F40 as shown.

Attach F42 on F41 as shown. Fix G14 to them as shown.

3 15mm 17mm E05 F43  
 17mm

Bend E05 as shown. Insert E05 to the hole of F42 as shown.

Attach F43 to the combinations as shown. The wall lamp is done. (2pieces)

4 G14 F44 A22-34 A22-34

Following above steps to do the another wall lamp.

### Flowerpot

1 G11 G10 G11 G10 C45 G11 C45  
 G10

Attach G11, G10 on the garden wall as shown.

Apply the glue on C45.

Attach G11 on C45 as shown.

2 G11 G10 G10

Attach G10 on G11 as shown. (You need to do two pieces.)

Attach the flowerpot on the garden wall as shown.

### Round sofa

1 D01 C06 D12 D12  
 D01

Cut D01 according to the template and attach it on C06 as shown.

Cover up C06 with D12 as shown.

2 D04 D16  
 D04

Circling D04 around the combination as shown.

Cut out D04 as shown.

Circling D16 around the combination as shown.

3 D16 (Bow)

Tie D16 in a bow. Attach the bow on combination as shown.

### Two-seat sofa

1 A22-31 C01 D01 D12 D01  
 C01

Attach A22-31 on C01 as shown.

Following the step to do the cushion as shown.

2 (Cushion) C03 C04 A22-32 C04  
 30° C03

Attach two pieces C04 to the combination as shown and the sofa is done.

### Door

1 A22-33 C21  
 C21

2 F21

Following above steps to make the door.

### Potted plant

1 G01 G01 G01 F09 F08 F10  
 G01

Cut out G01 as shown.

Insert G01 to the hole of F09, F08, F10 as shown and the potted plant is done.

### Pets corner

1 C40 C39 A22-35 D20  
 C40 C39 C41 D20 42mm 23mm

Attach C40 C41 and C39 as shown.

Paste A22-35 to the building.

2 A22-36 C43 C44 C44  
 52mm 52mm 52mm

Paste D20 to the building as shown.

3 F26 F15

Make G11 in oval shape. (Two pieces.)

Attach C42 as shown. Paste two pieces G11 on the side of C42 as shown.

Paste combinations well as shown.

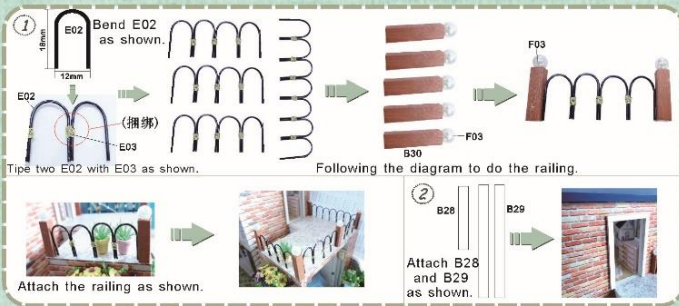
### Stairs

1 A22-37 B49 B60  
 A22-37 B49 B60

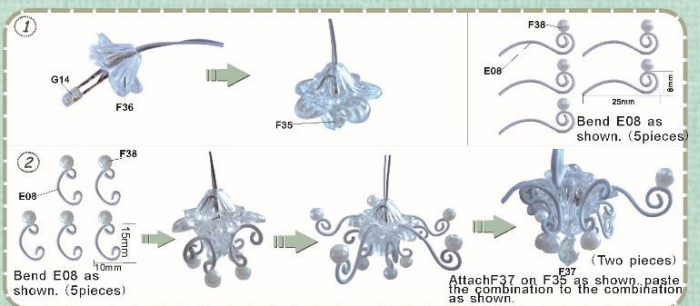
Attach A22-37 on B49 as shown.

Attach B49 to B50 as shown. And paste them to the building as shown.

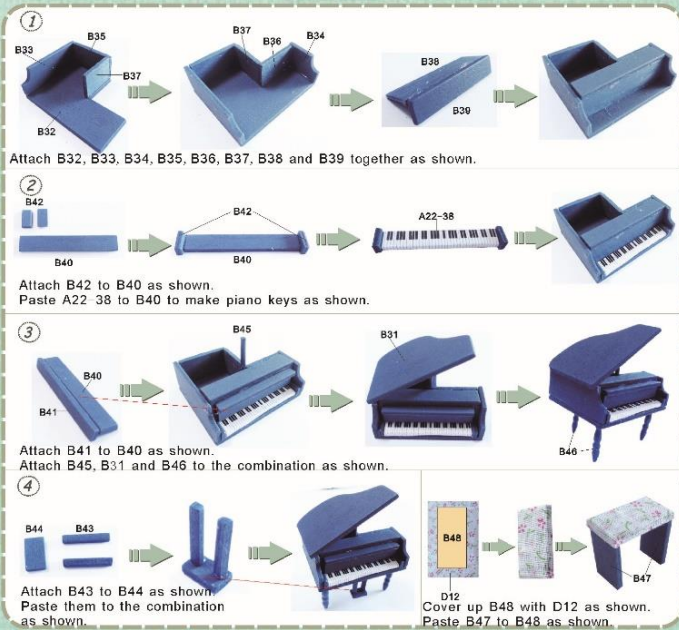
## Railing



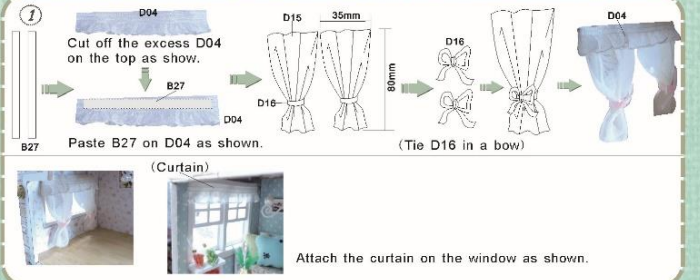
## Chandelier



## Piano



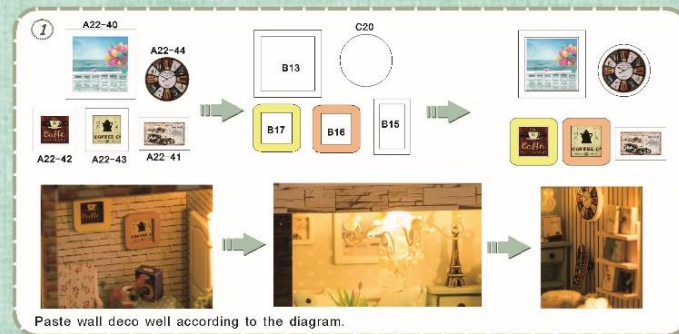
## Curtain



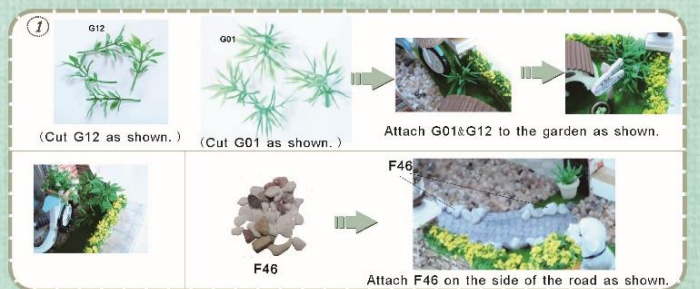
## Pillow



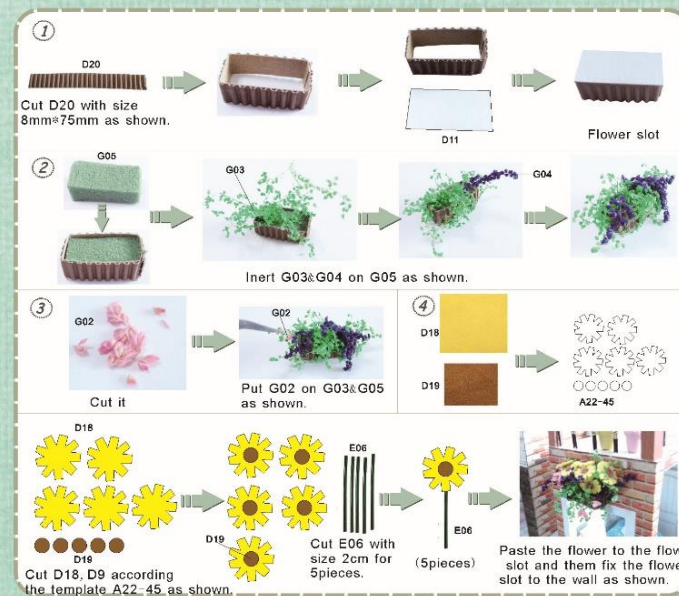
## Wall deco



## Grass



## Flower



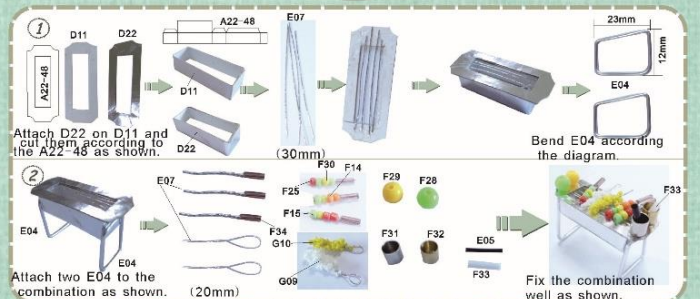
## Skateboard



## Slippers



## BBQ



## Lamp installation and Circuit Connection

**Dust cover**  
For updated version, the parts need to be purchased separately.

Install chandelier 1 and fix power wires along the dotted lines as shown. Install chandelier 2 and fix power wires on the bottom of the floor on the second floor, through the small hole along the dotted lines as shown.

Install wall lamp 3 and fix power wires along the dotted lines as shown.

Install one piece F12 and fix power wires along the dotted lines as shown.

The power wires along the dotted lines as shown.

Install all wall lamp and street lamp and fix power wires along the dotted lines as shown in the diagram.

All of the wires as shown.

Cut off the same size of all of the power wire as shown.

Use a craft blade to carefully skim over the plastic to bare the copper wire. Roll and wrap all grey wire together, all white wire together, as shown.

Connect the red wire of battery holder to grey wire, connect the black wire of battery holder to white wire as shown. Wrap the exposed wire with the tapes, and then insert 2pcs AA size battery on the battery holder.

H02 Transparent cover 0.15\*20.9\*28.8 (2pieces)  
H03 Transparent cover 0.15\*20.9\*20.9 (2pieces)  
H04 Transparent cover 0.15\*21.2\*28.8 (1pieces)

Tear off kraft paper of each piece of transparent cover.

Paste H02, H03 and H04 together to complete the dust cover as shown.

**Photo of Dust cover**

## Photo Gallery

