

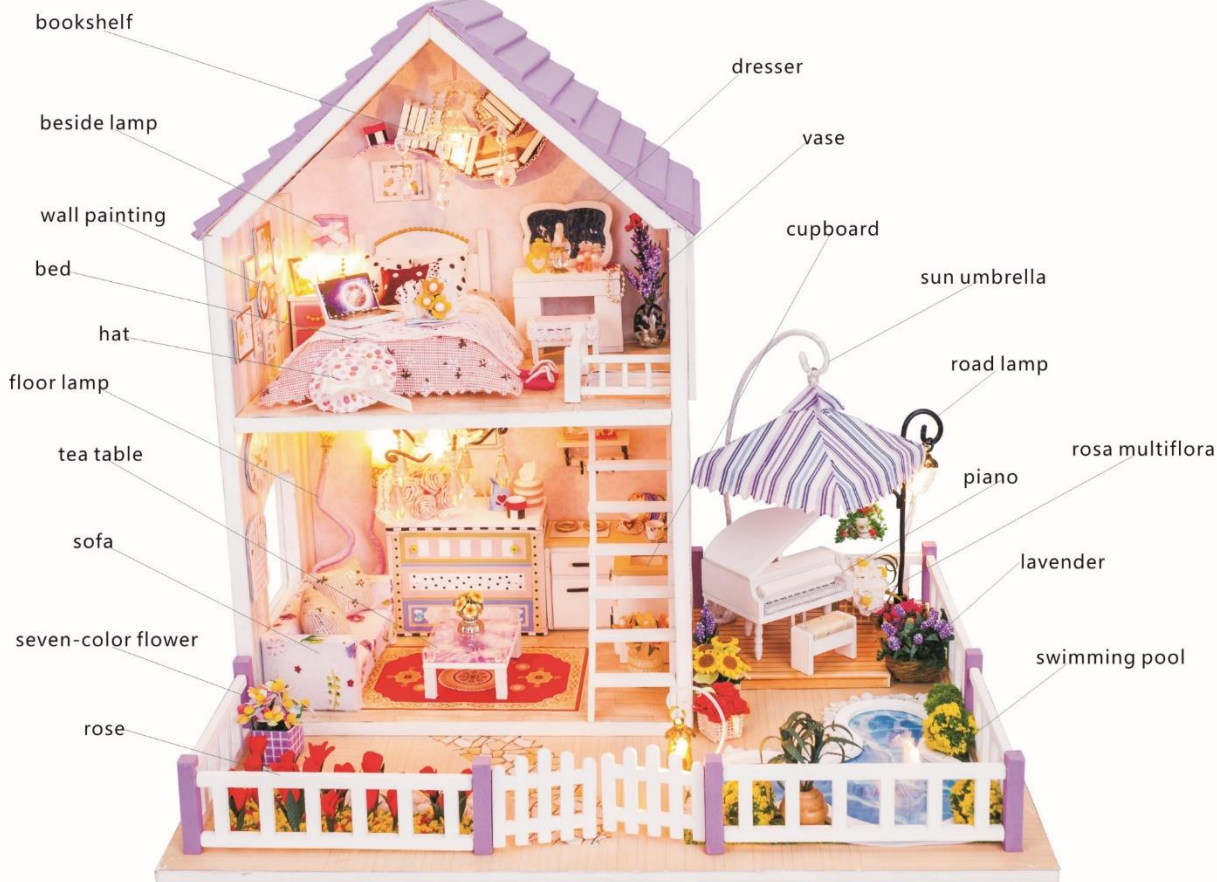
# Musical Summer



## 13834 User Manual

Notes: The product has a dustproof cover which is composed of five pieces of organic glass. Timber, cloth and bead might be slightly different between batches, please refer to the real product for detailed information.

## Product Introduction





# Material List

Unit: cm

## Material Bag A



A01 medium density fiberboard (white edge)  
0.5\*19\*26.7 (1 piece)



A02 medium density fiberboard (white edge)  
0.5\*9.5\*17.5 (1 piece)



A03 medium density fiberboard (white edge)  
0.5\*9.5\*17.5 (1 piece)



A04 medium density fiberboard (white)  
0.5\*15.4\*24.5 (1 piece)



A05 medium density fiberboard (white)  
0.5\*9.5\*14.4 (1 piece)



A06 medium density fiberboard (white edge)  
0.5\*9.5\*14.4 (1 piece)



A07 medium density fiberboard (mauve)  
0.5\*10.3\*10.7 (1 piece)



A08 medium density fiberboard (mauve)  
0.5\*10.3\*10.7 (1 piece)

## Material Bag B



B01 timber block (white)  
0.2\*0.6\*10.4 (2 pieces)



B02 timber block (white)  
0.2\*3.7\*5.2 (2 pieces)



B03 timber block (white)  
0.2\*6\*6.6 (1 piece)



B04 timber block (white)  
0.3\*4.3\*4.5 (1 piece)



B05 timber block (white)  
0.2\*2.5\*3.5 (1 piece)



B06 timber block (light yellow)  
0.2\*5\*5 (1 piece)



B07 timber block (white)  
0.2\*5\*10.8 (2 pieces)



B08 timber block (white)  
0.2\*3.2\*4.5 (1 piece)



B09 timber block (white)  
0.2\*1.3\*3.5 (1 piece)



B10 timber block (white)  
0.2\*3.5\*4.5 (1 piece)



B11 timber block (white)  
0.2\*1.3\*1.8 (1 piece)



B12 wane (white)  $\Phi=0.3$ ,  
length: 1.7 (3 pieces)



B13 timber block (white)  
0.2\*3\*3.2 (2 pieces)



B14 timber block (white)  
0.3\*2.4\*8.7 (1 piece)



B15 timber block (white)  
0.3\*2.4\*6.4 (2 pieces)



B16 timber block (white)  
0.3\*2.4\*9.5 (1 piece)



B17 timber block (white)  
0.3\*2.4\*8.3 (2 pieces)



B18 timber block (white)  
0.3\*9\*9 (1 piece)

## Material Bag C



C01 timber (white)  
0.5\*0.5\*1.8 (2 pieces)



C02 round timber (white)  $\Phi=0.2$ ,  
length: 0.8 (6 pieces)



C03 timber (white)  
0.2\*0.3\*3.3 (4 pieces)



C04 timber (white)  
0.4\*0.4\*4.5 (2 pieces)



C05 timber (wood color)  
0.2\*5.1\*6.6 (1 piece)



C06 timber (wood color)  
0.2\*1.5\*6.4 (1 piece)



C07 timber (wood color)  
0.2\*1.5\*5.1 (1 piece)



C08 timber (white)  
0.2\*1.5\*2 (3 pieces)



C09 timber (mauve)  
0.2\*0.8\*1.5 (2 pieces)



C10 timber (white)  
0.2\*1.6\*2.2 (2 pieces)



C11 timber (white)  
0.2\*1.5\*2.2 (2 pieces)



C12 timber (white)  
0.2\*1.6\*4 (1 piece)



C13 timber (white)  
0.2\*1.4\*2.6 (4 pieces)



C14 timber (white)  
0.2\*0.6\*4 (1 piece)



C15 timber (white)  
0.2\*1\*2 (2 pieces)



C16 timber (white)  
0.2\*1\*1.6 (6 pieces)



C17 timber (white)  
0.2\*0.6\*2 (4 pieces)



C18 timber (wood color)  
0.2\*1\*2 (2 pieces)



C19 timber (white)  
0.2\*4.6\*6 (1 piece)



C20 timber (white)  
0.2\*2.3\*4.6 (2 pieces)



C21 timber (white)  
0.2\*2.5\*6 (1 piece)



C22 timber (white)  
0.2\*2\*3.5 (2 pieces)



C23 timber (white)  
0.2\*2.8\*3.5 (1 piece)



C24 timber (white)  
0.2\*3\*3.5 (1 piece)



C25 timber (white)  
0.2\*0.9\*2.4 (2 pieces)

# Material List

Unit: cm



C26 timber (white)  
0.2\*2\*2.4 (1 piece)



C27 timber (white)  
0.2\*1.1\*1.2 (2 pieces)



C28 timber (white)  
0.2\*0.6\*1.8 (2 pieces)



C29 timber (white)  
0.2\*0.6\*1.2 (2 pieces)



C30 timber (white)  
0.2\*1.6\*1.8 (1 piece)



C31 timber (white)  
0.2\*0.8\*2.8 (1 piece)



C32 timber (white)  
0.2\*0.3\*2.4 (1 piece)



C33 timber (wood color)  
0.5\*2.6\*5 (3 pieces)



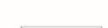
C34 timber (wood color)  
0.5\*2.6\*3.3 (2 pieces)



C35 timber (white)  
0.2\*3\*3.8 (1 piece)



C36 timber (white)  
0.4\*0.4\*1.2 (4 pieces)



C37 timber (white)  
0.2\*0.7\*3 (8 pieces)



C38 timber (white)  
0.3\*0.3\*5.5 (2 pieces)



C39 timber (white)  
0.3\*0.3\*4.9 (1 piece)



C40 timber (white)  
0.3\*0.3\*5.9 (2 pieces)



C41 timber (white)  
0.2\*1.3\*2.2 (1 piece)



C42 timber (white)  
0.2\*1.3\*1.9 (1 piece)



C43 timber (white)  
0.2\*1.3\*1.7 (1 piece)



C44 timber (white)  
0.2\*0.8\*4.1 (1 piece)



C45 timber (white)  
0.2\*1.1\*4.1 (1 piece)



C46 timber (white)  
0.2\*0.5\*3.7 (1 piece)



C47 timber (white)  
0.2\*0.5\*3.7 (1 piece)



C48 timber (white)  
0.2\*0.7\*3.7 (1 piece)



C49 timber (white)  
0.2\*0.4\*0.7 (2 pieces)



C50 timber (white)  
0.2\*0.2\*1.2 (2 pieces)



C51 timber (white)  
0.2\*0.5\*0.8 (1 piece)



C52 round timber (white)  
 $\Phi=0.2$ , length: 2.5 (1 piece)



C53 timber (mauve)  
0.5\*0.5\*3.1 (8 pieces)



C54 timber (wood color)  
0.5\*6\*7 (1 piece)

## Material Bag D



D01 corrugated paper (white)  
1.2\*14 (1 piece)



D02 paper (bright purple)  
2.4\*14 (1 piece)



D03 paperboard (white)  
14\*15 (1 piece)



D04 cotton (white) (some)



D05 non-woven (white)  
10\*16 (1 piece)



D06 bead chain (golden)  
length: 6.2 (1 piece)



D07 dotted cloth (white)  
5.2\*5.5 (1 piece)



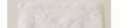
D08 dotted cloth (purple)  
2.6\*5.5 (1 piece)



D09 printed cloth (khaki)  
6.1\*11 (1 piece)



D10 printed cloth (pink)  
5\*10 (1 piece)



D11 lace (white)  
5.2\*18 (1 piece)



D12 ribbon (off-white)  
length: 13 (1 piece)



D13 paper (orange)  
2.2\*4 (1 piece)



D14 paper (yellow)  
2.5\*6 (1 piece)



D15 bead (pink) (5 pieces)



D16 plastic bag (transparent)  
(5 pieces)



D17 printed cloth (pink)  
4\*5 (1 piece)



D18 ribbon (purple)  
length: 4.5 (1 piece)



D19 lace (white)  
length: 4.5 (1 piece)



D20 ribbon (pink)  
length: 10 (1 piece)



D21 bead (golden) (3 pieces)



D22 bead (white) (1 piece)



D23 bright silver paper (1 piece)



D24 small bead (yellow) (1 piece)



D25 heart-shaped bead (yellow) (1 piece)

# Material List

Unit: cm


# Material List

Unit: cm

		<b>Material Bag E</b>						
<b>Material Bag F (for upgraded version)</b>								

### Necessary Tools

(Tools are not included in the packing list and should be prepared by users)



### Notes:

The color picture on package is an effect picture of the product. Please assemble it according to the picture.  
Please prepare tools, including knife, ruler, scissor, pencil, eraser, needle, etc.  
Sandpaper in the package can be used to polish corners of wooden materials.  
Please take out material bags in sequence so as to assemble the product by stages.  
During the process of assembling, please refer to the diagrams accordingly.

### Warnings:

Please do not allow infants and young children to play with the package for avoiding dangerous accidents!  
The product must be taken out by adults and then played by children.  
Children must be under the custody of adults when playing with the product.

### Tips for assembling

- 1 Please read the user manual carefully before assembling.
- 2 Firstly polish corners of wooden materials by sandpaper, and then assemble every part tidily according to Part Number.
- 3 Use tweezers to help pasting tiny materials.
- 4 Use pliers to shape iron wire.
- 5 Dotted lines on paper accessories are folding line, and grey parts are for pasting.
- 6 It is suggested to paste paper accessories by double faced adhesive tape.



## Outer Frame

**1. Take out the materials and paste them as shown in the picture.**

**2. Firstly paste A09-43 and then paste A09-45 to the back side.**  
(Please pay attention to the white edge when pasting A09-43 and A09-45.)

**3. Firstly paste A09-44 and then paste A09-46 to the back side of A03.**  
(Please pay attention to the white edge when pasting A09-44 and A09-46.)

**4. Take out the materials and paste them as show in the picture.**

**5. Take out the boards and printed paper.**

There is some parts of printing paper behind the instructions

(Install the music movement which is for upgraded version.)

5. Paste the boards together referring to the marks on printed paper.

6

## Fences

**1. Take out the materials and make the fences as shown in the pictures.**

(The blunt angle made by B01)

## Stairs

**2. Take out the materials to make the railing and stairs.**

### Ceiling Lamp on the Second Floor

**4. Take out the materials and make the ceiling lamp on the second floor.**

## Bookshelf

**3. Take out the materials to make the bookshelf on the second floor.**

7















## Sunflower and Lavender

## Seven-color Flower and Red Rose

(Paste the materials together to make sunflowers.)  
 (Cut out six pieces of D46 (2cm each) and plug them into the flowers.)  
 (Cut out six pieces of D65 as per the pattern of A09-29.)  
 (Plug the six sunflowers into A09-31.)  
 (Cut out 15 pieces of D46 (1.6cm each) and paste D40 to one end of D46.)  
 (15 flowers needed.)  
 (Cut out 30 leaves from D61 as per the pattern of A09-51.)  
 (Plug three flowers and D40 into D69.)  
 (Plug 12 flowers into the basket.)  
 (Cut out a piece of D46 (0.8cm) and paste D64 to one end of D46.)  
 (The length of iron wire can be adjusted and nine seven-color flowers are needed.)

(Paste D62 along the lawn and the floor.)  
 (Apply some white glue to the lawn, firstly paste some yellow tree powder and then paste red tree powder.)  
 (Cut out five pieces of D60 as per the pattern of A09-28.)  
 (The D46 is about 1.2cm.)  
 (The length of iron wire and number of leaves can be adjusted. 20 roses are needed.)  
 (Cut out three pieces of D61 as per the pattern of A09-28.)  
 (The D46 is about 1.2cm.)  
 (Cut out A09-26 and paste it on the iron wire.)  
 (Cut D16 in half.)

(Cut out D59 as per the pattern of A09-30.)  
 (Paste them to make a basket.)  
 (Cut out four leaves from 65 as per the pattern of A09-28 and then plug them into the flower basket.)  
 (Make five flowers as shown in the pictures.)

## Rosa Multiflora

## Plants

(Cut out four pieces of D46 (2.8cm) and paste D64 to one end of D46.)  
 (Paste petals to the iron wire.)  
 (Apply some glue to the first layer of petals and then paste another layer of petals.)  
 (Fold it along the dotted line.)  
 (Fold it along the dotted line.)  
 (Cut off the corner.)  
 (Knead it with hand.)  
 (Make a hole by awl to plug the iron wire.)  
 (Put D68 into A09-32.)  
 (Four petals are needed for one flower.)  
 (Cut some leaves from D61 as per the pattern of A09-35.)  
 (Plug the four flowers and leaves into the flowerpot.)

(Take out D13 and D14 and cut out the petals as shown in the picture.)  
 (Cut out 18 leaves from D61 as per the pattern.)  
 (Cut D15 in half.)  
 (Take out five pedals and paste them to D15.)  
 (Paste the leaves to the flower.)  
 (Cut D16 in half.)  
 (Cut out a piece of D12 (3cm) to make a bouquet.)  
 (Cut out a piece of D11 (5.5cm) and put the flowers on it.)  
 (Take out three flowers.)  
 (Wrap the flower by D16, totally nine flowers are needed.)  
 (Put the flower on D16 and cut off unwanted part.)

(Cut out a piece of D59 with the size shown in picture as per the pattern of A09-26.)  
 (Paste D58 around the flowerpot and plug the six flowers into it.)  
 (Cut out two pieces of D45 (4cm each) and plug them into D08.)  
 (Cut out some leaves from D06 as per the pattern of A09-39 and paste the leaves to iron wire.)  
 (Prepare some tissue and make three balls with the diameters of 1cm (1 piece) and 0.5cm (2 pieces).)  
 (Paste some D81 to the tissue and then paste the yellow tree powder to the balls.)

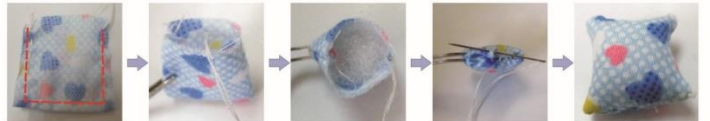


## Wall Paintings

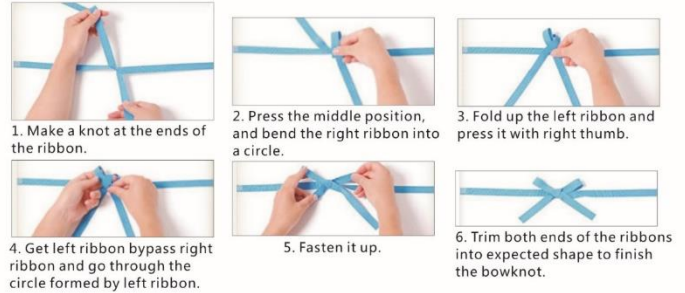


(Paste the wall paintings to D03 and cut them out. It is suggest to cut two layers, and paste them to the wall as shown in picture.)

## Instructions on Making Pillows and Bowknots.



(Fold the cloth (2.6\*5cm) in half (2.5\*2.6) and sew it, leave one side open to turn outside in, fill it with cotton and then sew it completely.)



1. Make a knot at the ends of the ribbon.

2. Press the middle position, and bend the right ribbon into a circle.

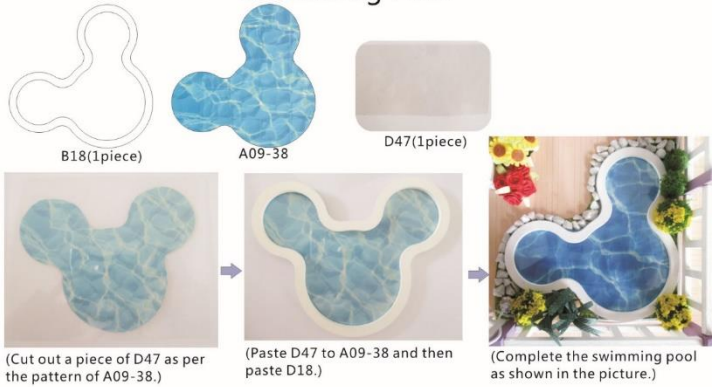
3. Fold up the left ribbon and press it with right thumb.

4. Get left ribbon bypass right ribbon and go through the circle formed by left ribbon.

5. Fasten it up.

6. Trim both ends of the ribbons into expected shape to finish the bowknot.

## Swimming Pool



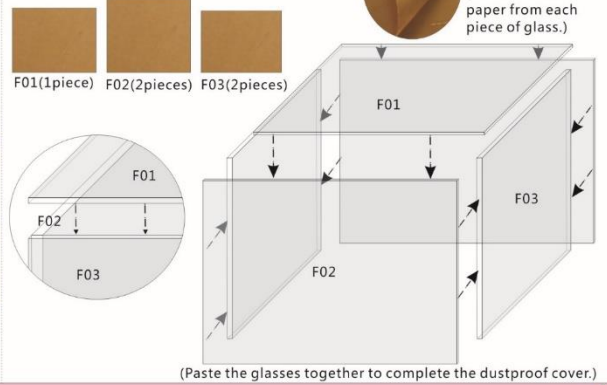
(Cut out a piece of D47 as per the pattern of A09-38.)

(Paste D47 to A09-38 and then paste D18.)

(Complete the swimming pool as shown in the picture.)

## Dustproof Cover

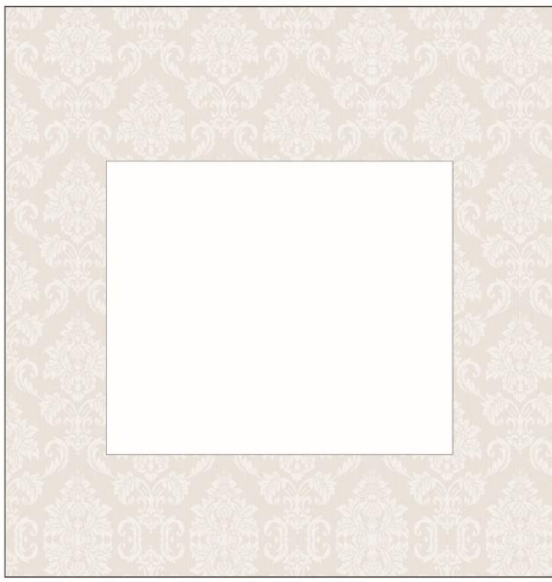
(For updated version)



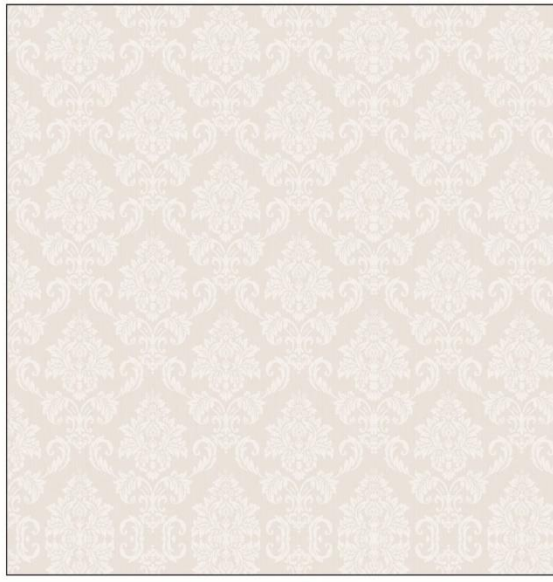
(Paste the glasses together to complete the dustproof cover.)







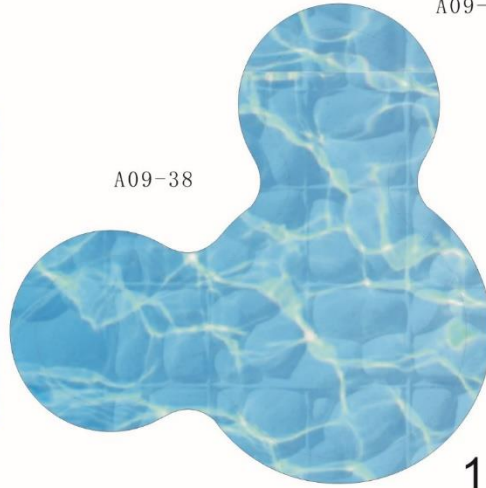
A09-41



A09-42



A09-37



A09-38



13834(4-2)



A09-40