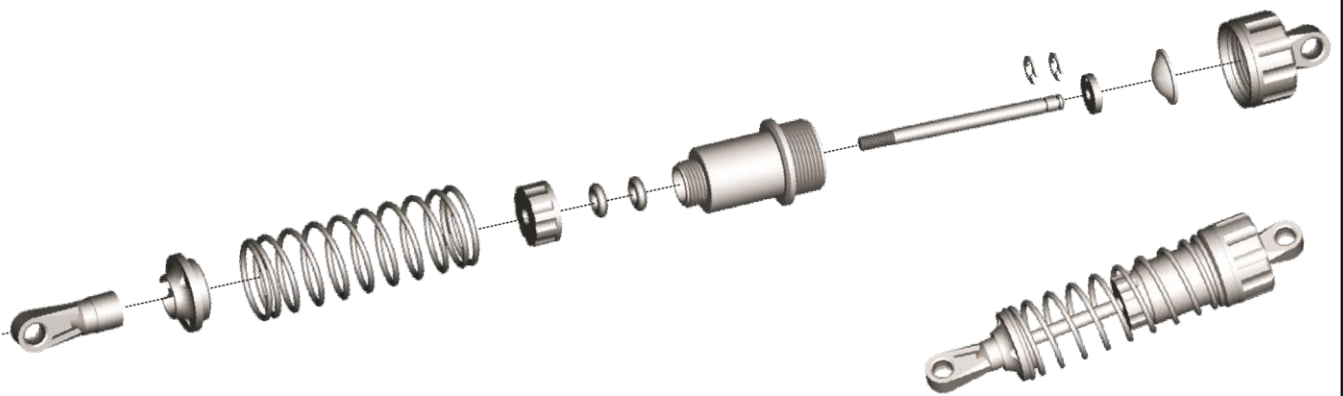
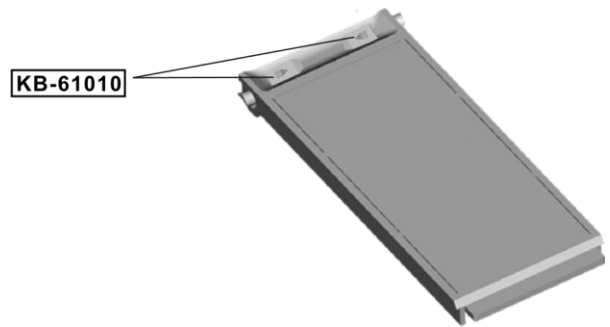
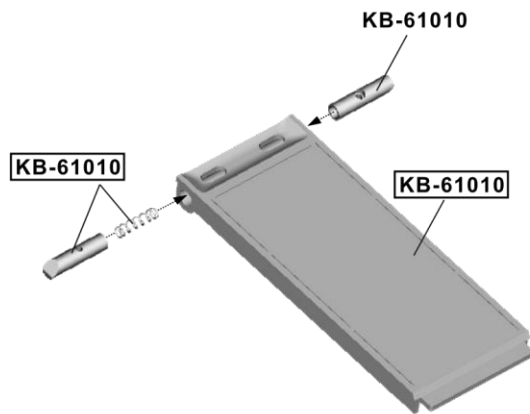


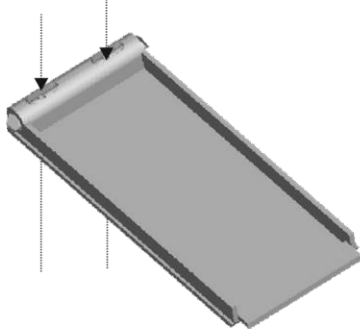
## FRONT/REAR SHOCK ASSEMBLY



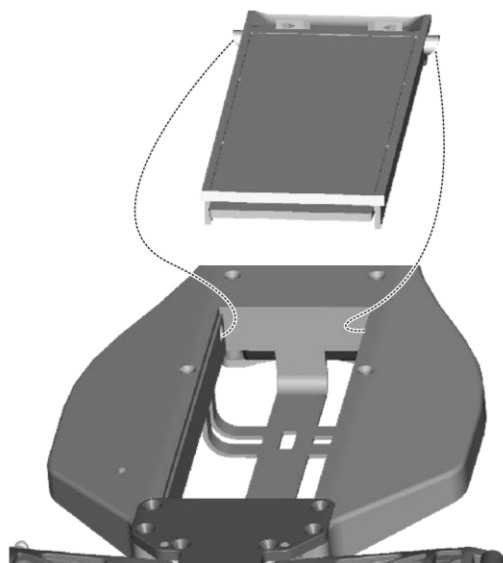
## BATTERY COVER INSTALLATION



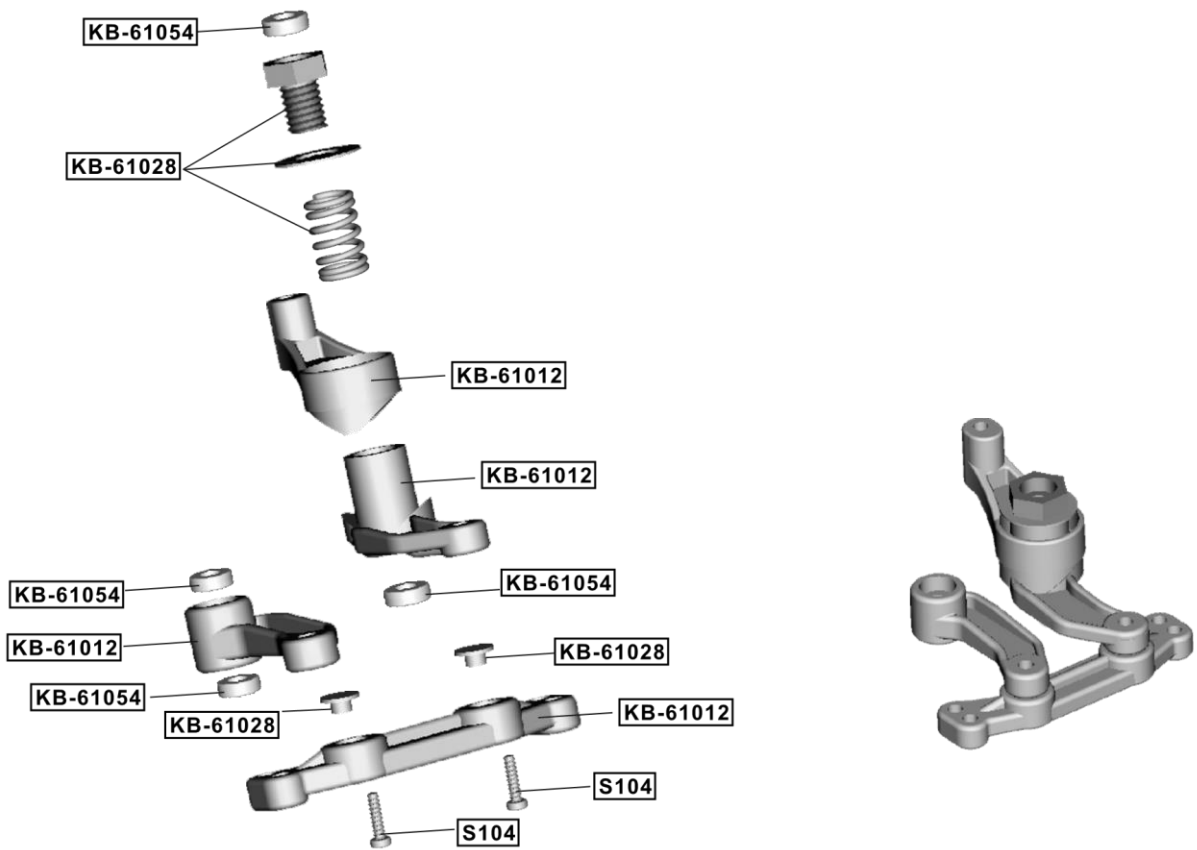
Locked with the screw (S031)



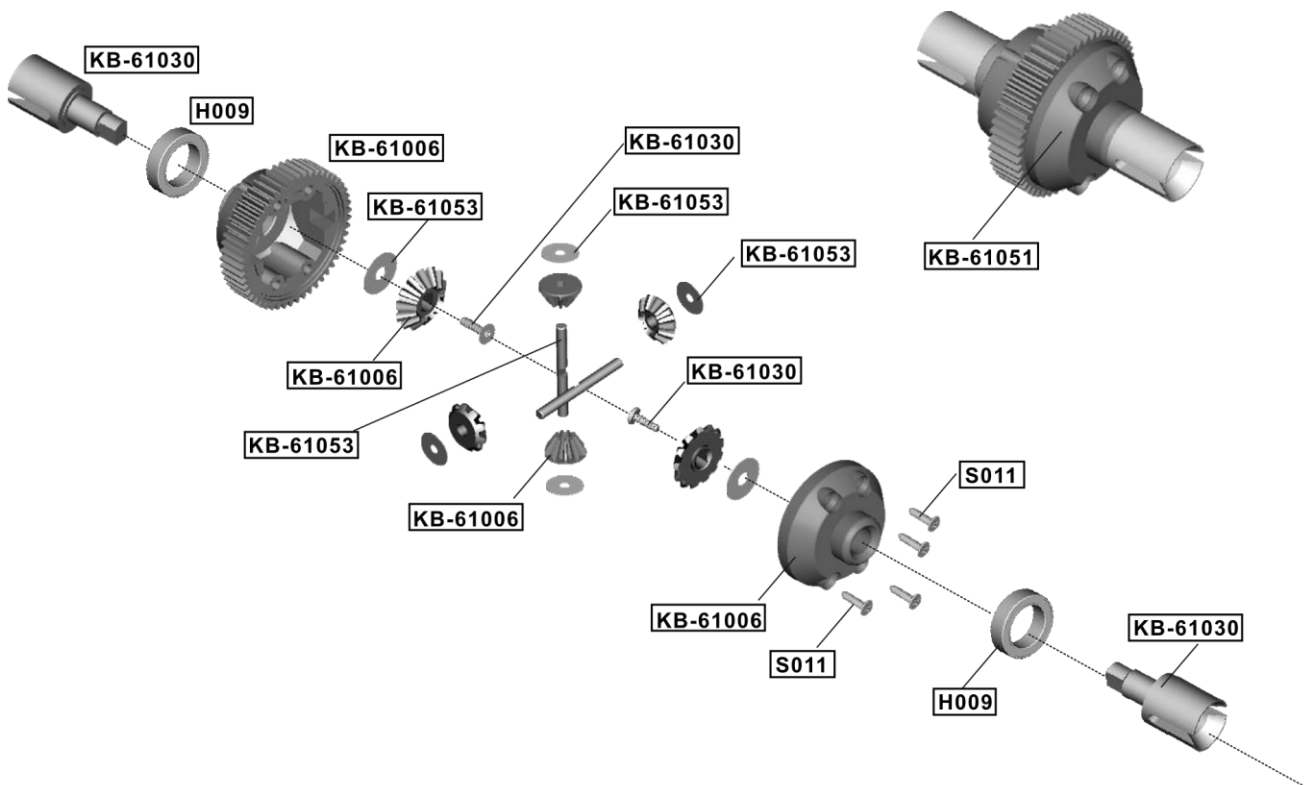
Place the battery cover and press it until it snaps together with the chassis.



## FRONT STEERING ASSEMBLY

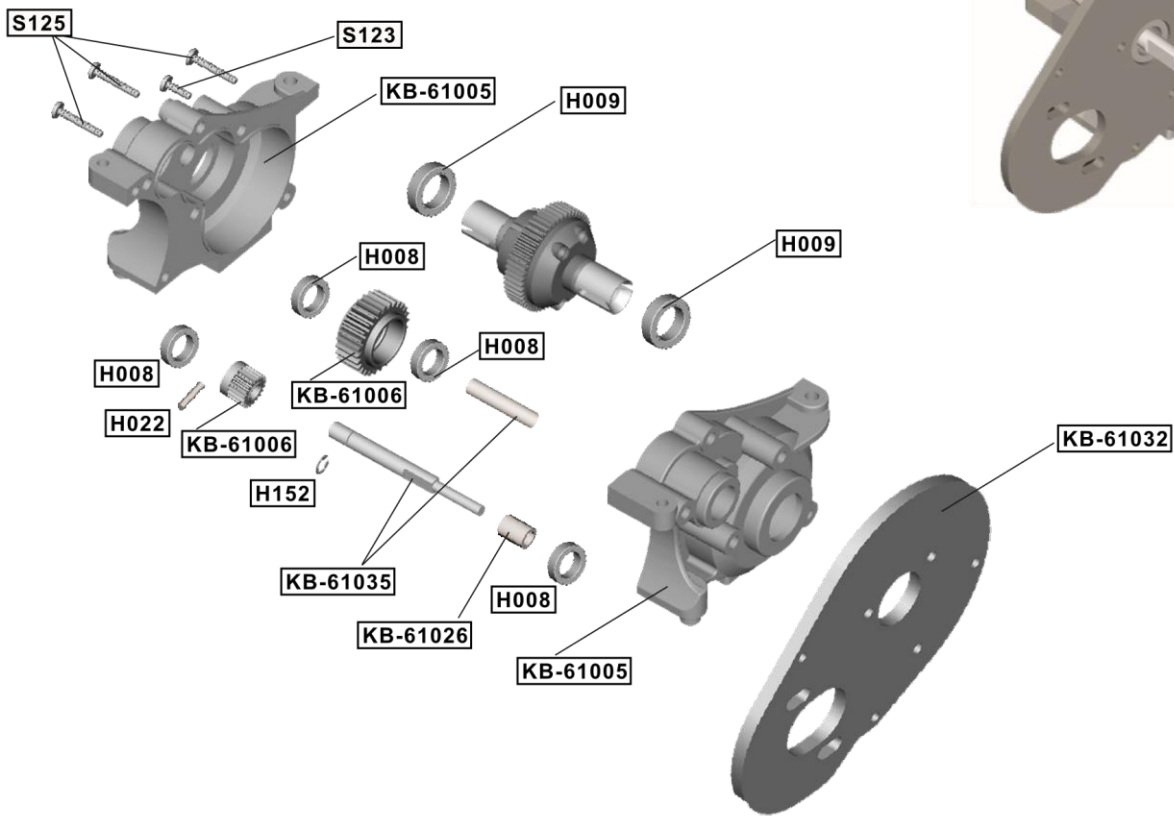


## 2WD REAR DIFF. ASSEMBLY-1

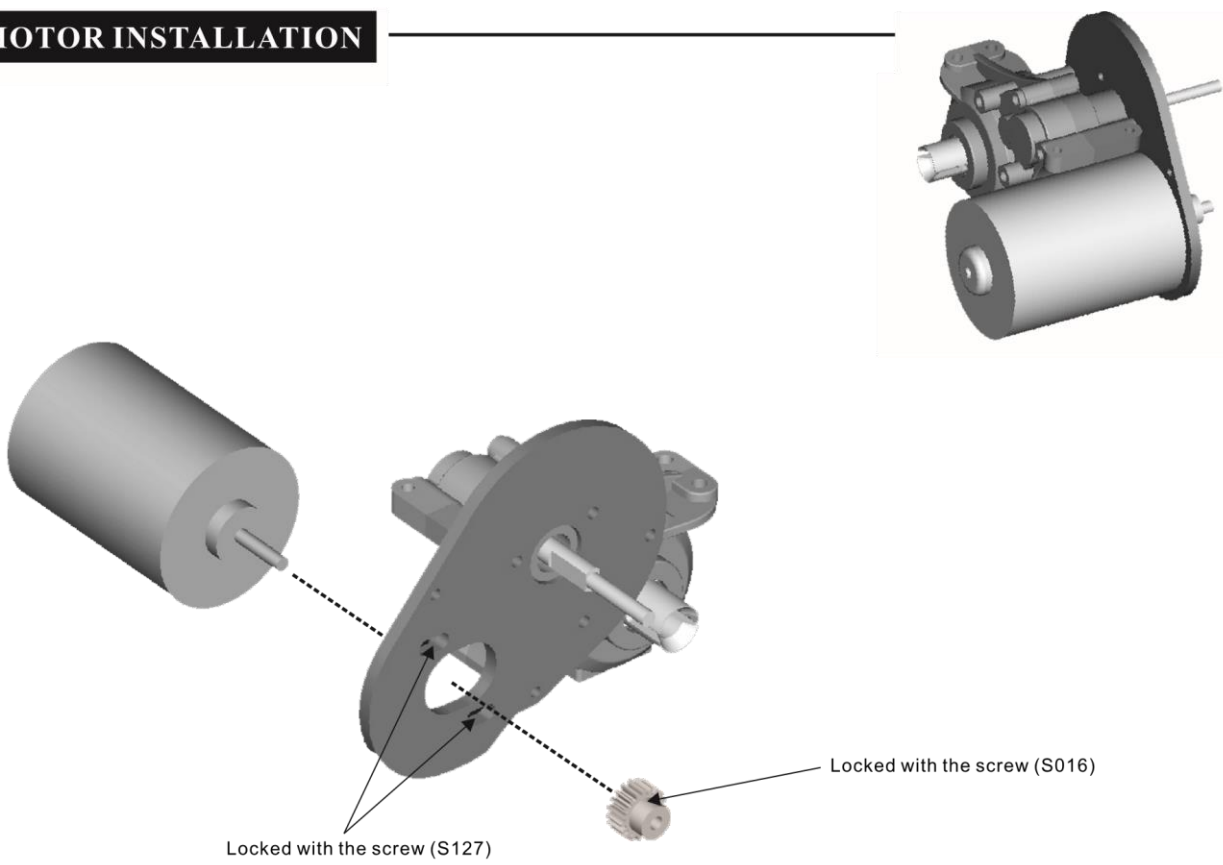


Specifications and/or images are subject to change without prior notification.

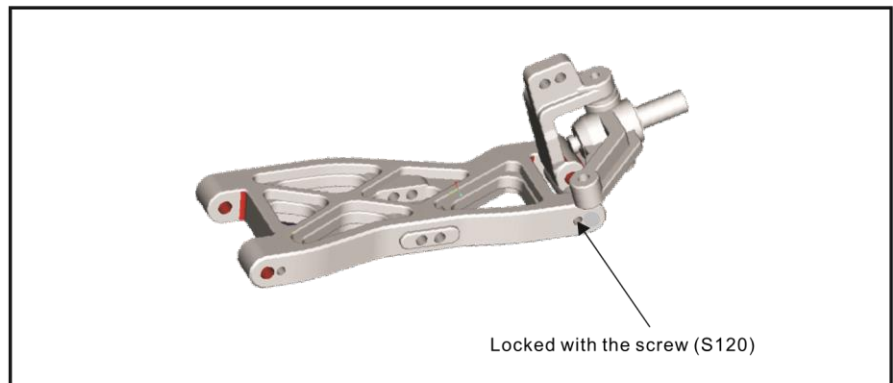
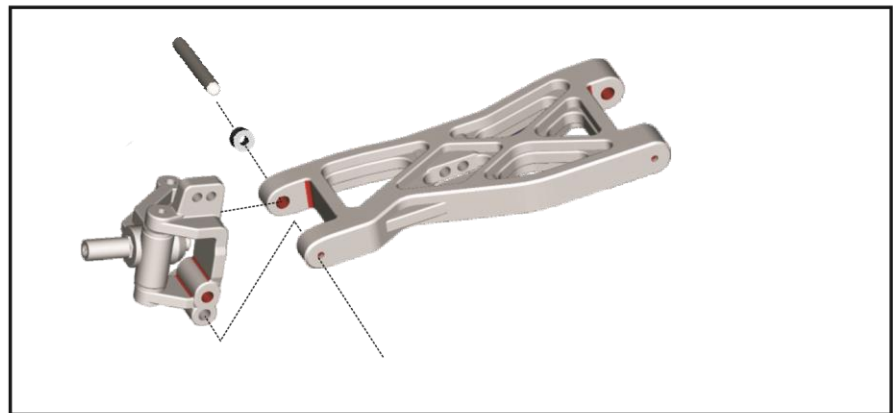
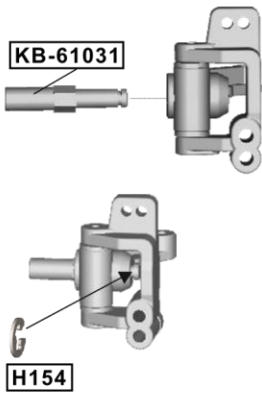
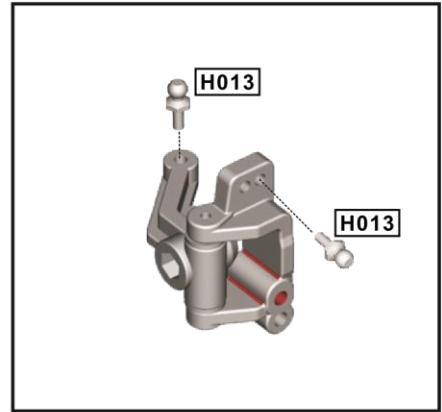
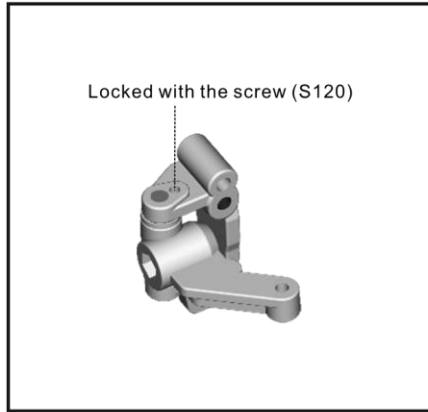
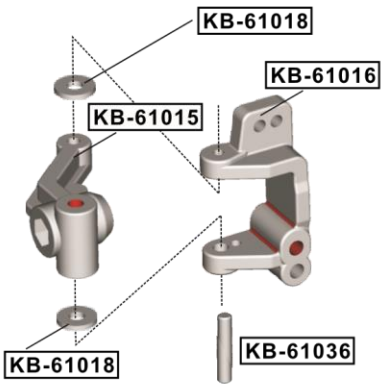
## 2WD REAR DIFF. ASSEMBLY-2



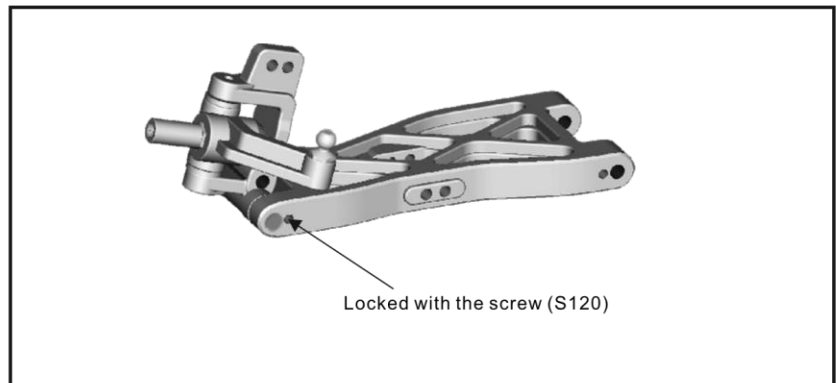
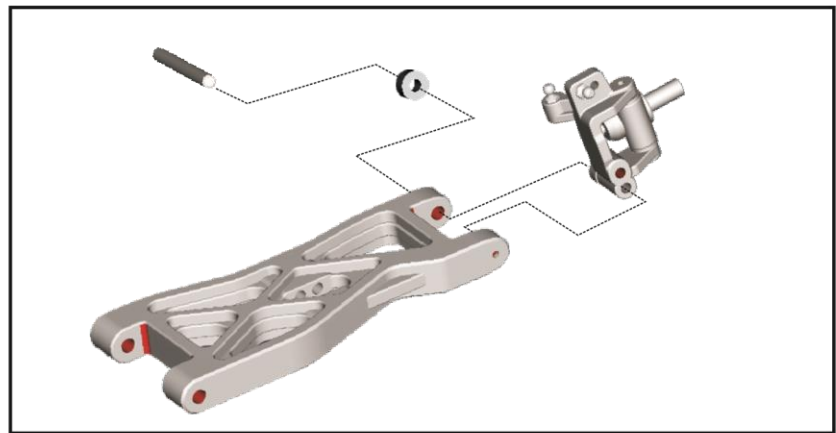
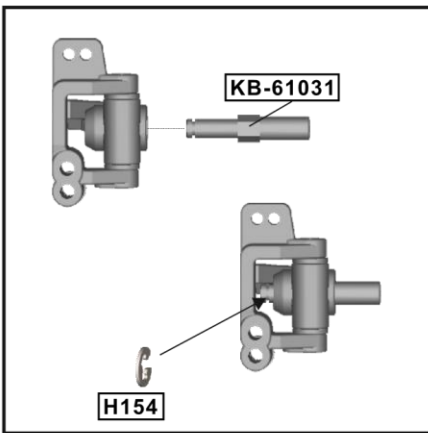
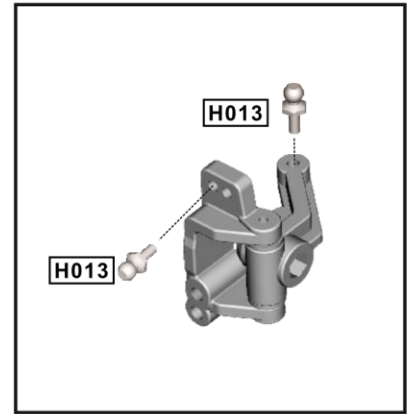
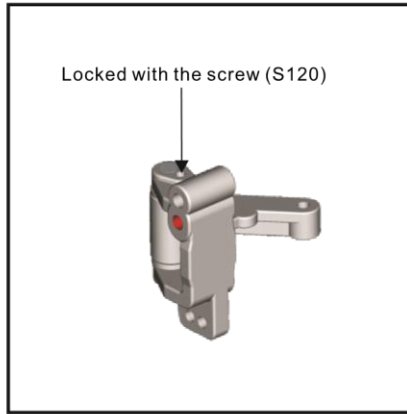
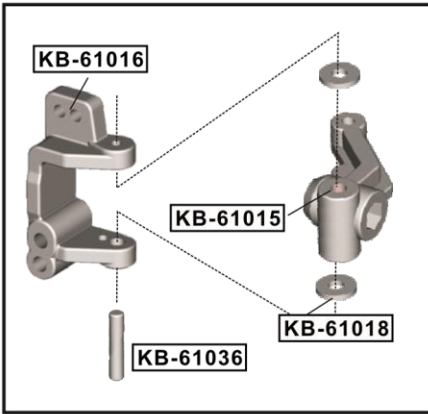
## MOTOR INSTALLATION



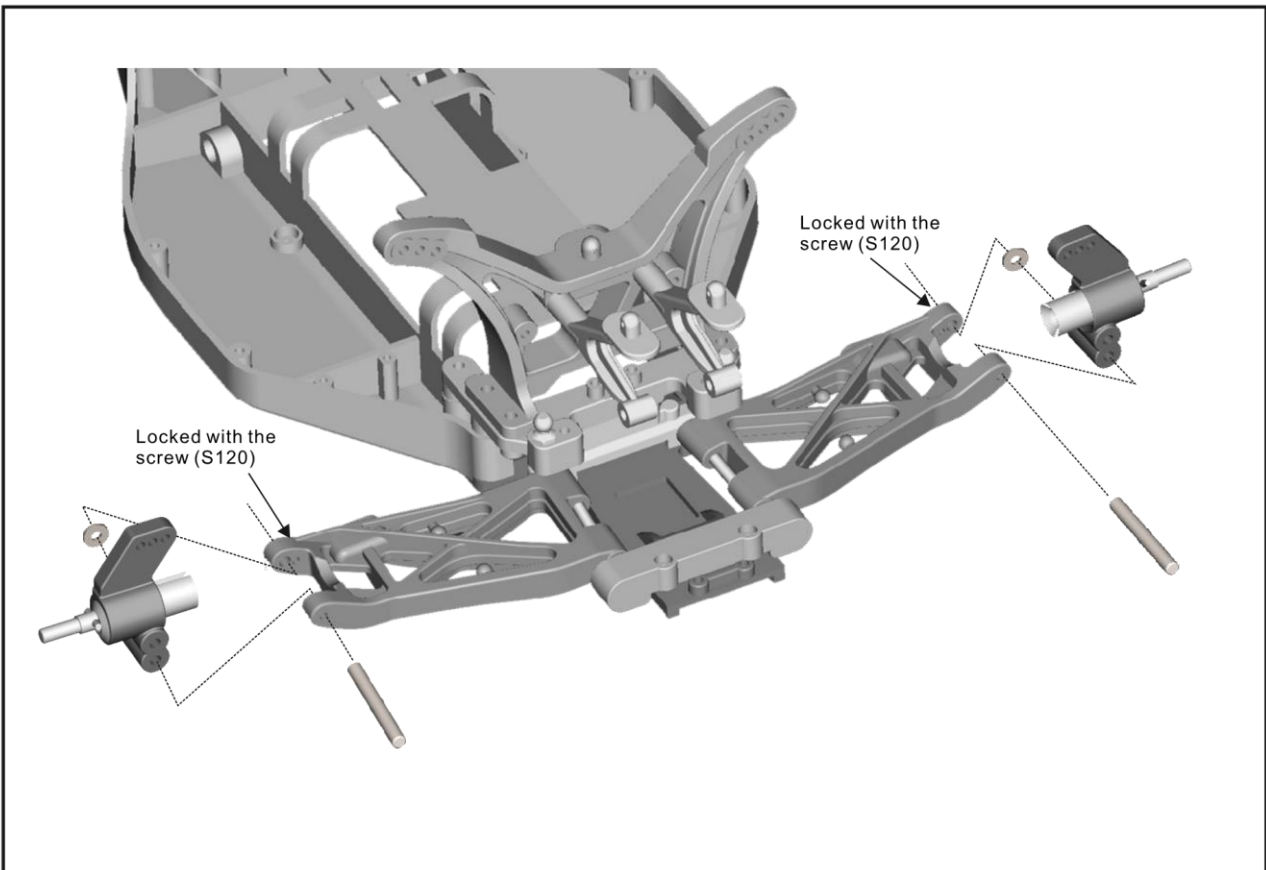
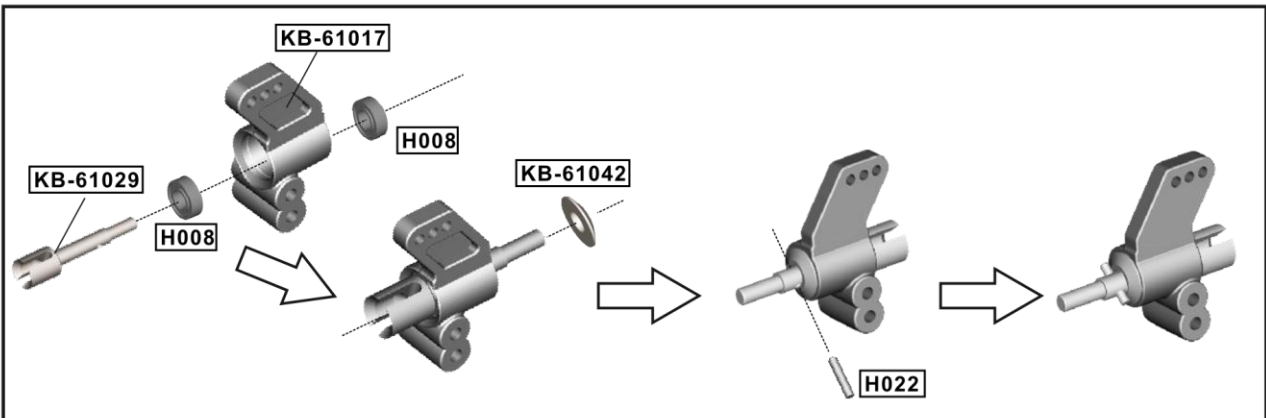
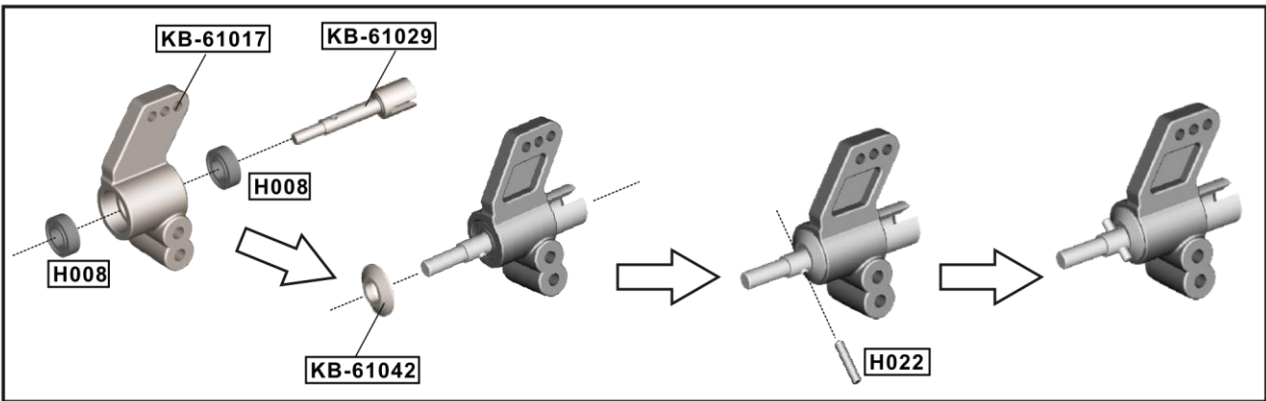
# STEERING HUB/FRONT UPRIGHT INSTALLATION -LEFT SIDE



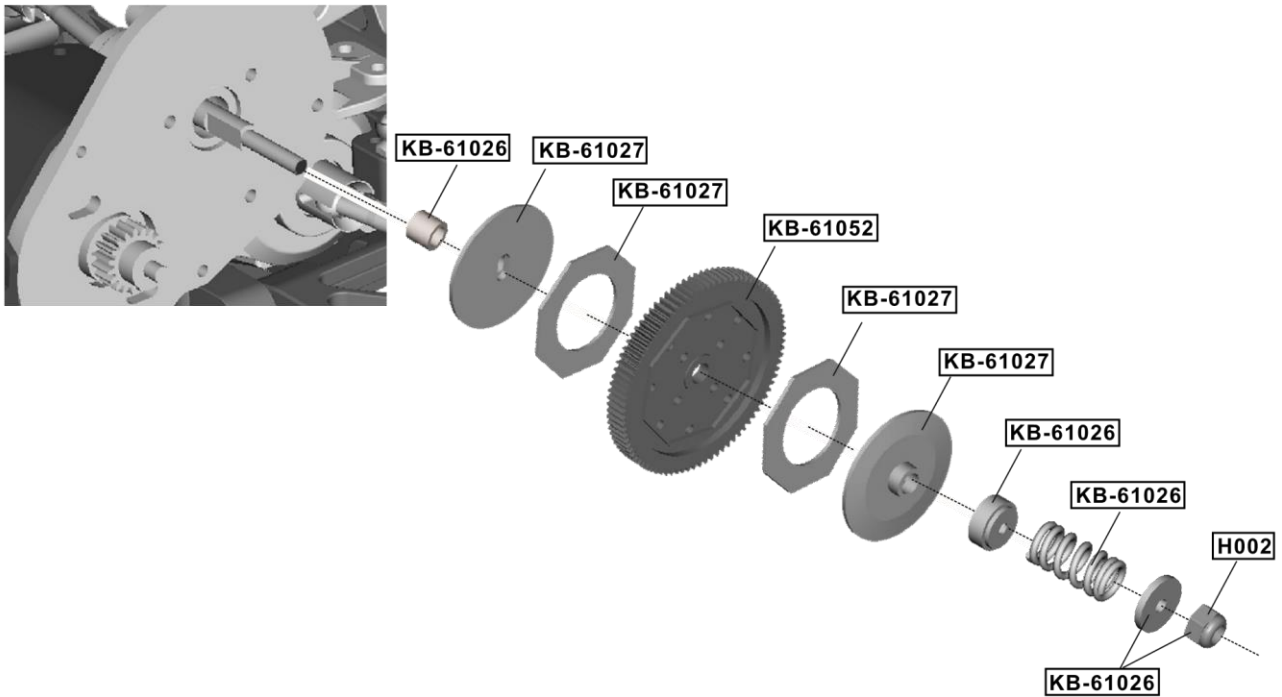
# STEERING HUB/FRONT UPRIGHT INSTALLATION -RIGHT SIDE



## REAR UPRIGHT INSTALLATION



## SPUR GEAR /SLIPPER CLUTCH INSTALLATION



Install the spur gear and slipper clutch as show. Tighten the lock nut with a cross wrench once installed.  
 A) If there is too much slippery, please loosen it for smoother power delivery.  
 B) For high grip performance, please tighten it for quicker throttle response.  
 Our standard adjustment is to allow the slipper gear not to slip when it lands on the ground after jumping.

## SERVO INSTALLATION

