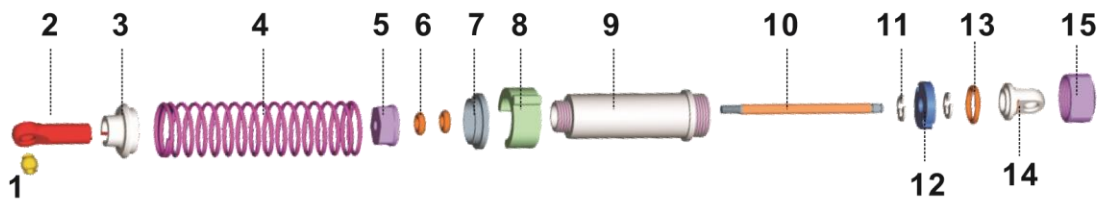


Assembly Diagram-2

Shock Assembly



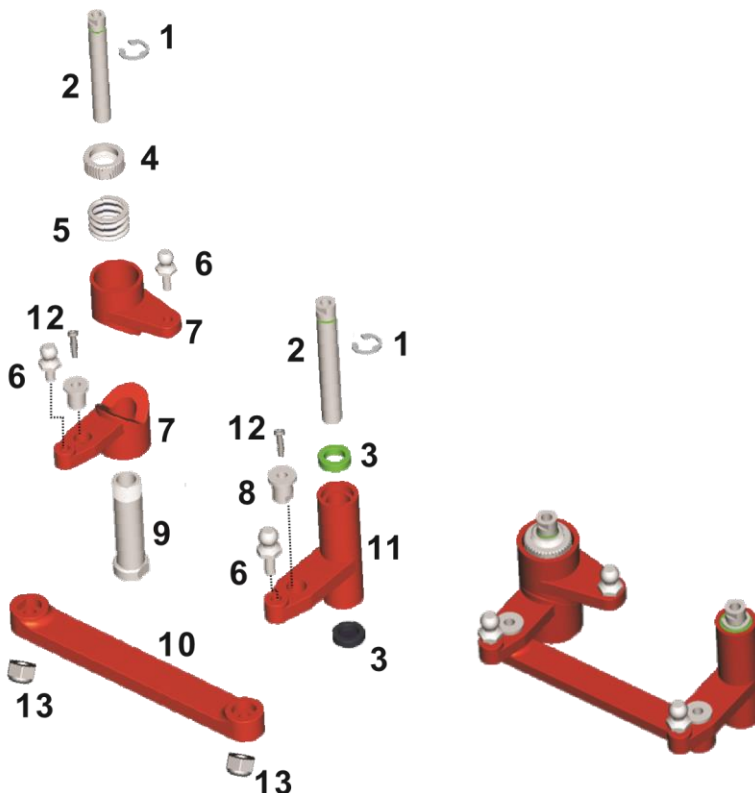
1. Shock Lower Mount Ball ϕ 4.8
2. Shock Bottom Mount
3. Shock Spring Retainer(bottom)
4. Shock Spring
5. Shock Body Bush

6. Shock Seal(small)
7. Shock Spring Retainer(upper)
8. Shock Adjustable Clasp
9. Shock Body
10. Shock Shaft

11. E-Clip(2mm)
12. Shock Piston
13. Shock Seal(Large)
14. Shock Cap
15. Shock Upper Mount

Assembly Diagram-3

Steering Assembly



1. E-Clip (4mm) (Part NO.: H152)
2. Steering Post (Part NO.: 6538-H017)
3. Steering Plate Bush (Part NO.: 6588-P011)
4. Steering Adjustable Ring (Part NO.: 6588-T002)
5. Buffer Load Spring (Part NO.: 6588-T002)
6. Ball Stud Screw 4.8 (Part NO.: H013)
7. Steering Post Bushing A (Part NO.: 6588-T002)
8. Steering Bush (Part NO.: 3338-H025)
9. Steering Post Bore (Part NO.: 6588-T002)
10. Steering Ackerman Plate (Part NO.: 6588-P011)
11. Steering Post Bushing B (Part NO.: 6588-P011)
12. Round Head Screw 2.5*12 (Part NO.: S060)
13. Lock Nut M2.5 (Part NO.: H017)

