

AMIRO

S1 Golden Dot Matrix RF Skin-tightening Machine User Manual

*Thank you for purchasing the AMIRO product. The illustrations of the product, accessories, and the user interface in the user manual are for reference only.

- For your safety, please read this manual carefully before use.
 - Please keep this manual for future reference.
- Please include this manual when transferring the product to others.

Contents

- I. Product Information
- II. Instructions
- III. Skin Care Advice
- IV. Safety Precautions
- V. Table of Common Malfunctions
- VI. Warranty

I. Product Information

Product Description

This product is a smart beauty device, which matches with an AMIRO BEAUTY freeze-drying facial mask for targeted improvement of skin problems, while a stronger 19-pole fractional rotation RF head and EMS ensure deeper and more uniform energy.

Product Specifications

- Product name: AMIRO S1 Golden Dot Matrix RF Skin-tightening Machine
- Product model: ABF-202
- Product size: 90.35x64.6x38.88mm
- Stamp size: 40x15mm
- Net weight: 140.6g
- Rated input: 5V=3A
- Charging time: approx. 90 minutes
- Battery capacity: 1200mAh
- Country of origin: China

Product List

- S1 Golden Dot Matrix RF Skin-tightening Machine x1
- Charging base x1
- Storage pouch x1
- Charging cable x1
- User manual x1
- AMIRO BEAUTY freeze-drying facial mask x1
- Preparation gel x1
- Quick guide card x1

II. Instruction

Device illustration

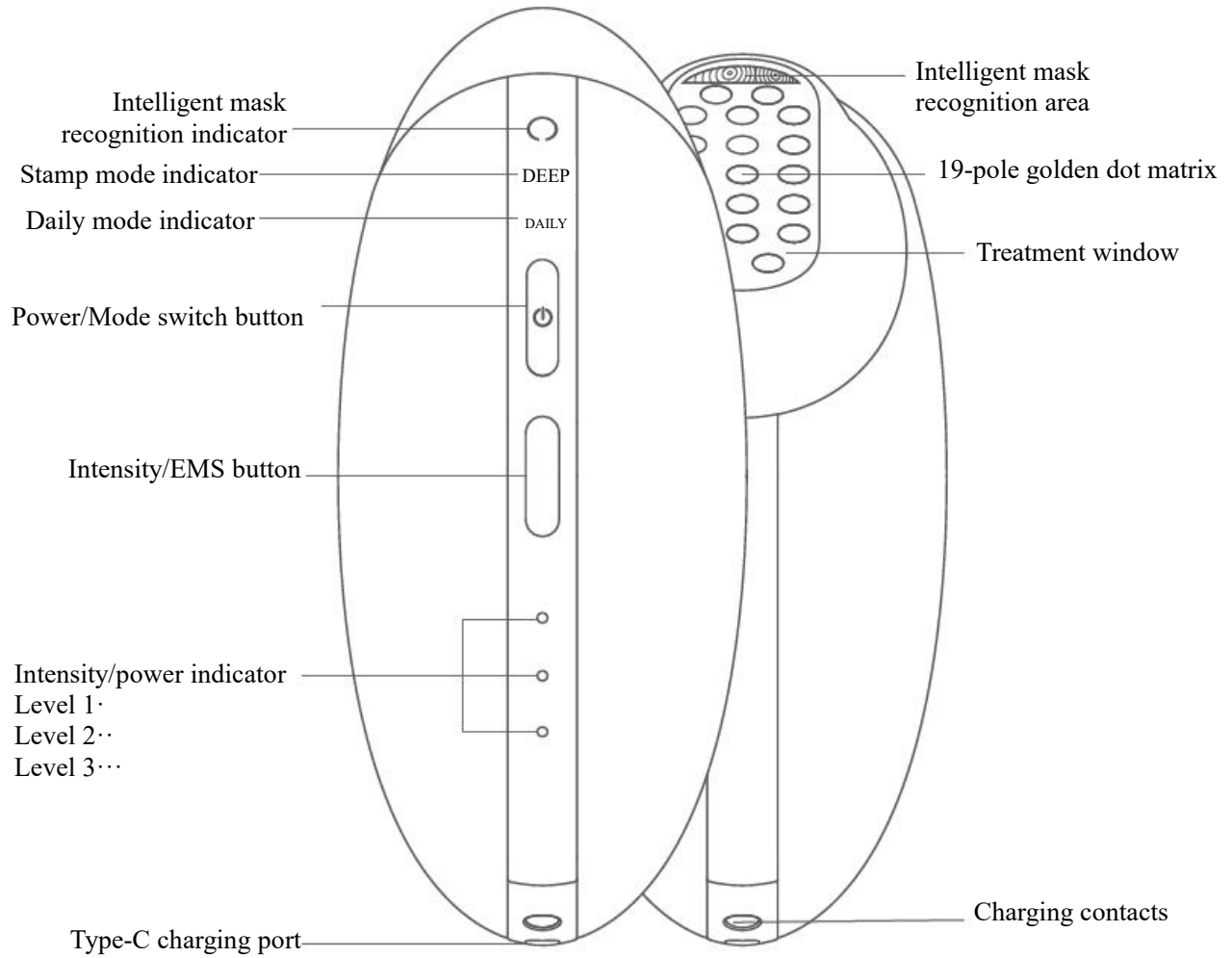
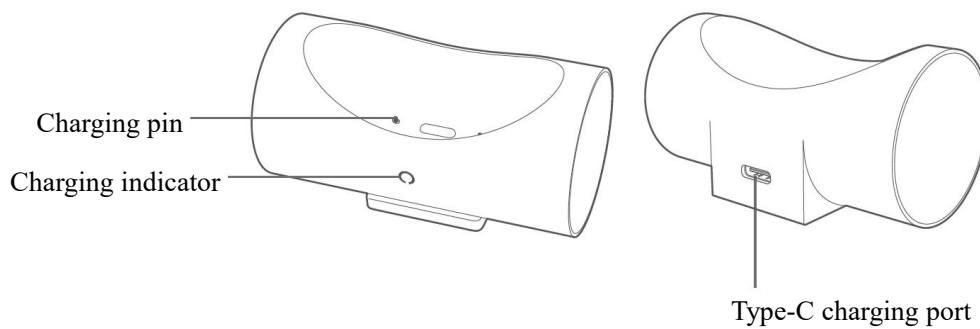


Illustration of charging base



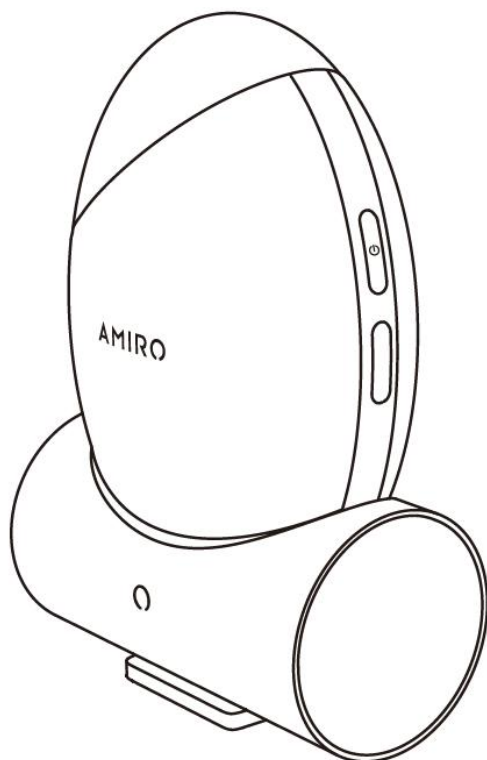
Operating procedure

1. Charging

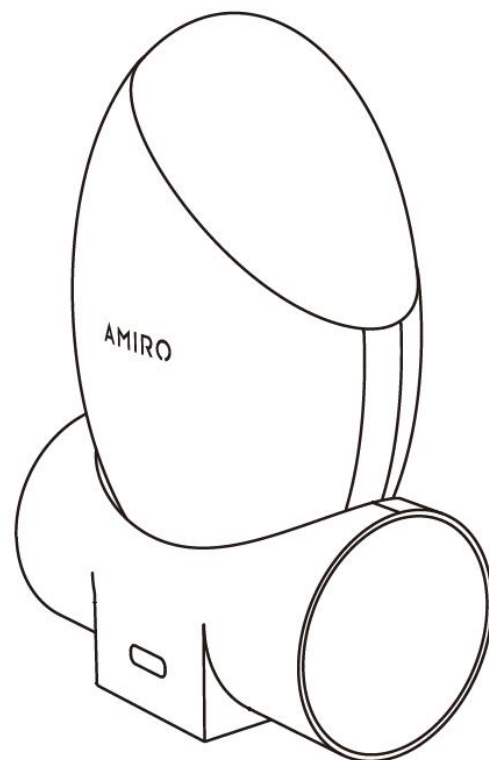
Place the charging base and charging cable on a flat surface in a well-ventilated and dry place. (Charging base and charging cable are included in the S1 Golden Dot Matrix RF Skin-tightening Machine)

1.1 Base charging

- Connect the charging cable to the power adapter
- Insert the Type-C connector of the charging cable completely into the charging port of the charging base.
- Plug power adapter into the socket.
- Place the device into the fast charging base (forward and reverse charging supported).
- When the charging indicator of the base is on (orange) for 2 seconds before going out, it indicates that the charging base is powered on.
- When the device is placed on the charging base which is powered on, flashing [orange] indicator of the base indicates the device is being charged, and [green] indicator indicates the completion of the charging. (For important safety information regarding charging, please refer to Safety Precautions)



Front view



Rear view

1.2 Type-C charging

- Connect the charging cable to a power adapter (one that supports rated inputs $\geq 5V=3A$ and has a compliance certification such as CQC).
- Insert the Type-C connector of the power adapter completely into the charging port of the device.
- Plug power adapter into the socket.

The device is in charging mode when the intensity/power indicator flashes, and the number of flashing indicators corresponds to the current power level of the device.

- The device is fully charged when all 3 intensity/power indicators are lit up.

When charging is complete, unplug the power adapter from the socket before removing the charging cable from the device.

2. Powering on and off

- When the device is off, press the switch/mode button for 1.5s to turn on the device at the hint of a vibration. When the device is switched on for the first time, [Deep Anti-Aging Action Mode] and intensity level 1 are by default. When switched on again, the device will be in the mode and intensity level last used.
- The device will automatically power off if no operation and no contact with skin is made within 120 seconds after being powered on. Restart the device to use again.
- Press the switch/mode button for 1.5s to power off the device at the hint of a vibration.

3. Mode switching

- When power is on, press the switch/mode button for 0.5s to switch between [Deep Anti-Aging Action] and [Daily Skin Care] at the hint of a vibration. The indicators are respectively for [Daily Skin Care] mode and [Deep Anti-Aging Action] mode.

In [Deep Anti-Aging Action] mode, the device can automatically detect the color of the AMIRO BEAUTY freeze-drying facial mask, and the [intelligent mask recognition indicator] will constantly show the corresponding color and enter specified output mode. For example: orange AMIRO stamping light for [orange mask]. Masks of other brands can not be recognized, and no stamp indicator will be displayed.

4. EMS function switch

- In Daily Skin Care mode, after pressing the intensity button for 1.5s, when the mode indicator is white, the EMS is on, and when the mode indicator is cyan, the EMS micro-current is off.

5. Intensity selection

- The device's default intensity is 1 (1 indicator on) when first powered on; it remembers the last intensity used when it is powered on subsequently.
- After switching on, press the [intensity button] briefly to switch intensity. The intensities are switched in the cycle of 1-2-3-2-1-2-3, at the hint of a vibration.
- The highest level of intensity is 3 (3 indicators on) and the lowest level of intensity is 1 (1 indicator on).

6. Power indicator

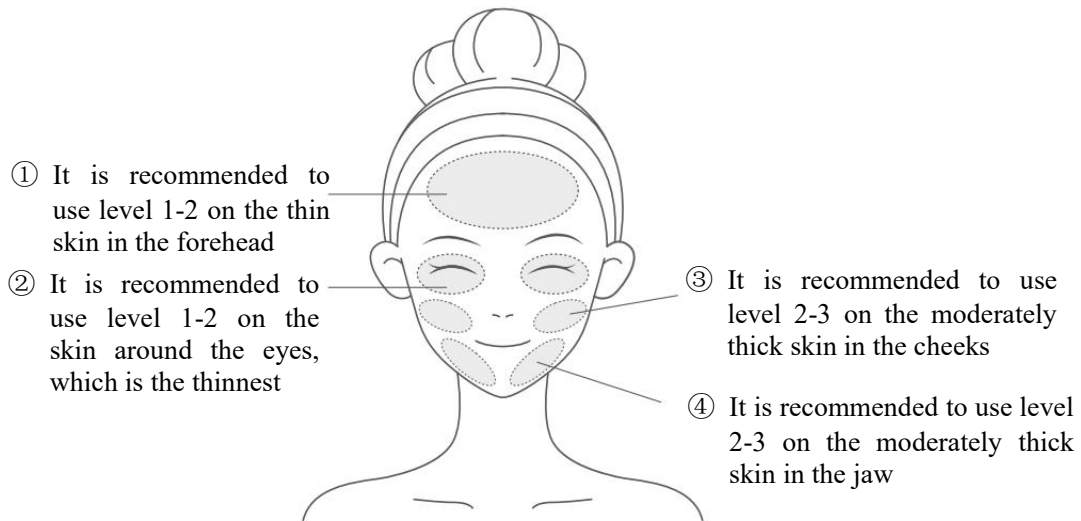
- The device does not display remaining power when powered on or in use. The indicator of the current mode will flash quickly when the power is low to remind the charging.
- Press the [switch/mode button] to check the [intensity/power] indicator for remaining power when the device is powered off. 3 indicators on indicate the highest power level and 1 indicator on indicates the lowest.
- When the device is placed on the charging base, flashing [orange] indicator of the base indicates the device is being charged, and [green] indicator indicates the completion of the charging.
- When charging by cable, the device's intensity indicator only shows the power level, with 3 indicators on for the highest power level and 1 indicator on for the lowest.

7. Power reminder

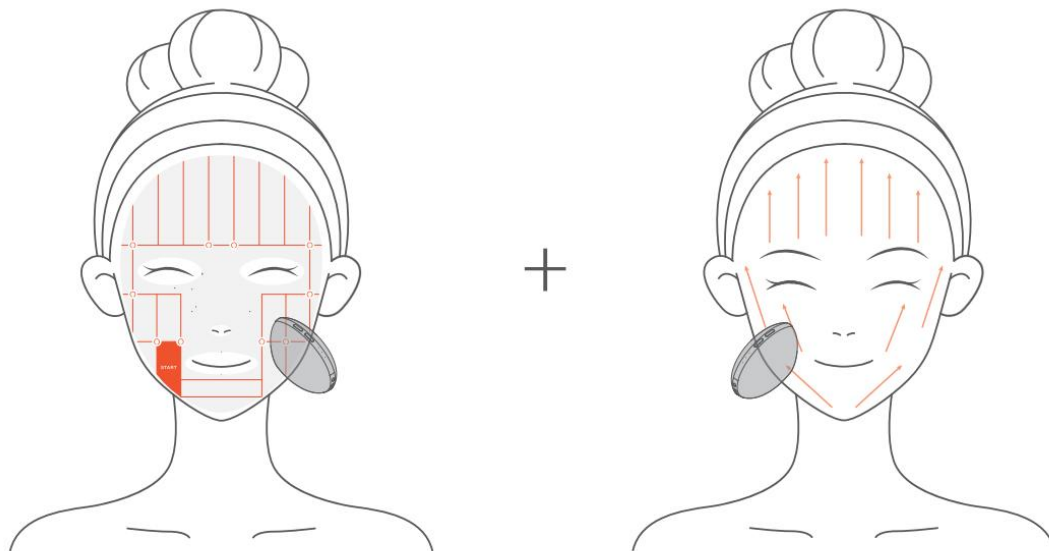
- In the ON or standby modes, the current indicator will keep flashing when power is low. Please charge immediately to ensure normal operation.
- When powered off, if the device cannot be turned on by pressing the switch/mode button and the Level 1 indicator flashes 5 times before going out, it means the power is low. Please charge immediately to ensure normal operation.

III. Care Advice

- **Level suggestions: based on the actual situation of individuals:**



*It is recommended to use [Deep Anti-Aging Action] for 5 minutes to promote collagen regeneration and [Daily Skin Care] for 4 minutes to lift and firm the skin with the remaining mask essence or gel.



Deep Anti-Aging Action for 5 minutes

Daily Skin Care for 4 minutes

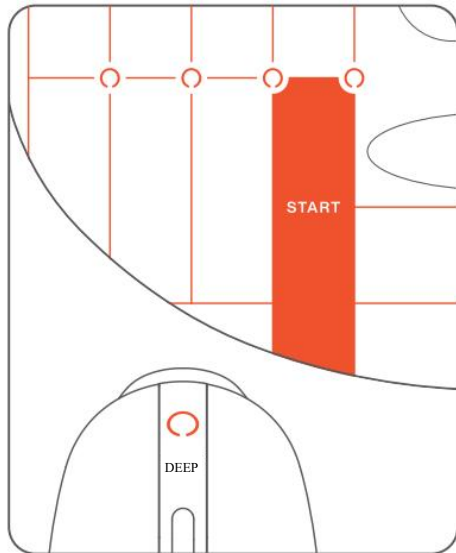
[Deep Anti-Aging Action]: It is recommended to use the mode 1-4 times a week according to your skin type, which can match with the AMIRO BEAUTY intelligent identification mask, providing different skin types with different energy concentrations for suitable anti-aging effects.

Recommendations for different skin conditions:

Normal skin

3 times a week;

After stamping the face for 5 minutes in the [Deep Anti-Aging Action] mode and the device is powered off, mask can stay for an extra 10-15 minutes.

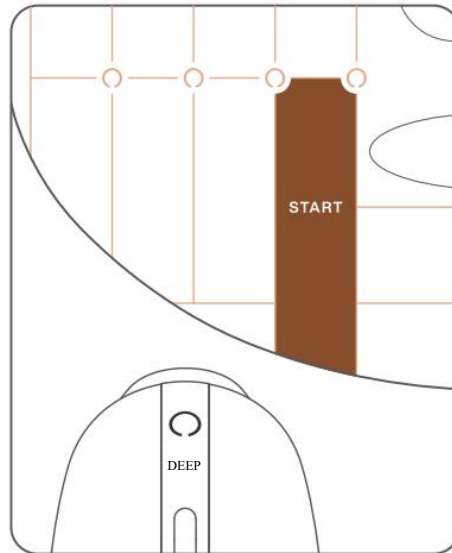


Orange mask is for normal skin type, which corresponds to **orange** mask indicator after matching with the device and outputs an energy level adapted to normal skin type.

Dry skin

twice a week

After stamping the face for 5 minutes in the [Deep Anti-Aging Action] mode and the device is powered off, mask can stay for an extra 5-10 minutes.

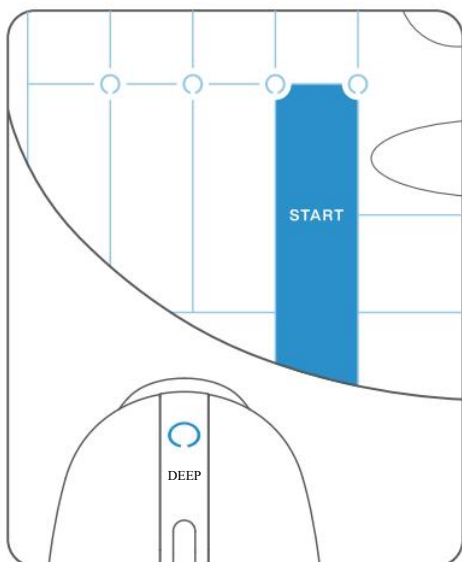


Brown mask is for dry skin type, which corresponds to **white** mask indicator after matching with the device and outputs an energy level adapted to dry skin type.

Oily skin

3-4 times a week;

After stamping the face for 5 minutes in the [Deep Anti-Aging Action] mode and the device is powered off, mask can stay for an extra 15-20 minutes.

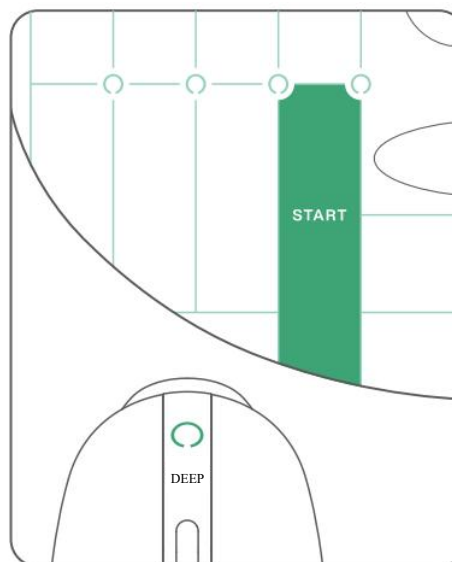


Blue mask is for oily skin type, which corresponds to **blue** mask indicator after matching with the device and outputs an energy level adapted to oily skin type.

Sensitive skin

once a week

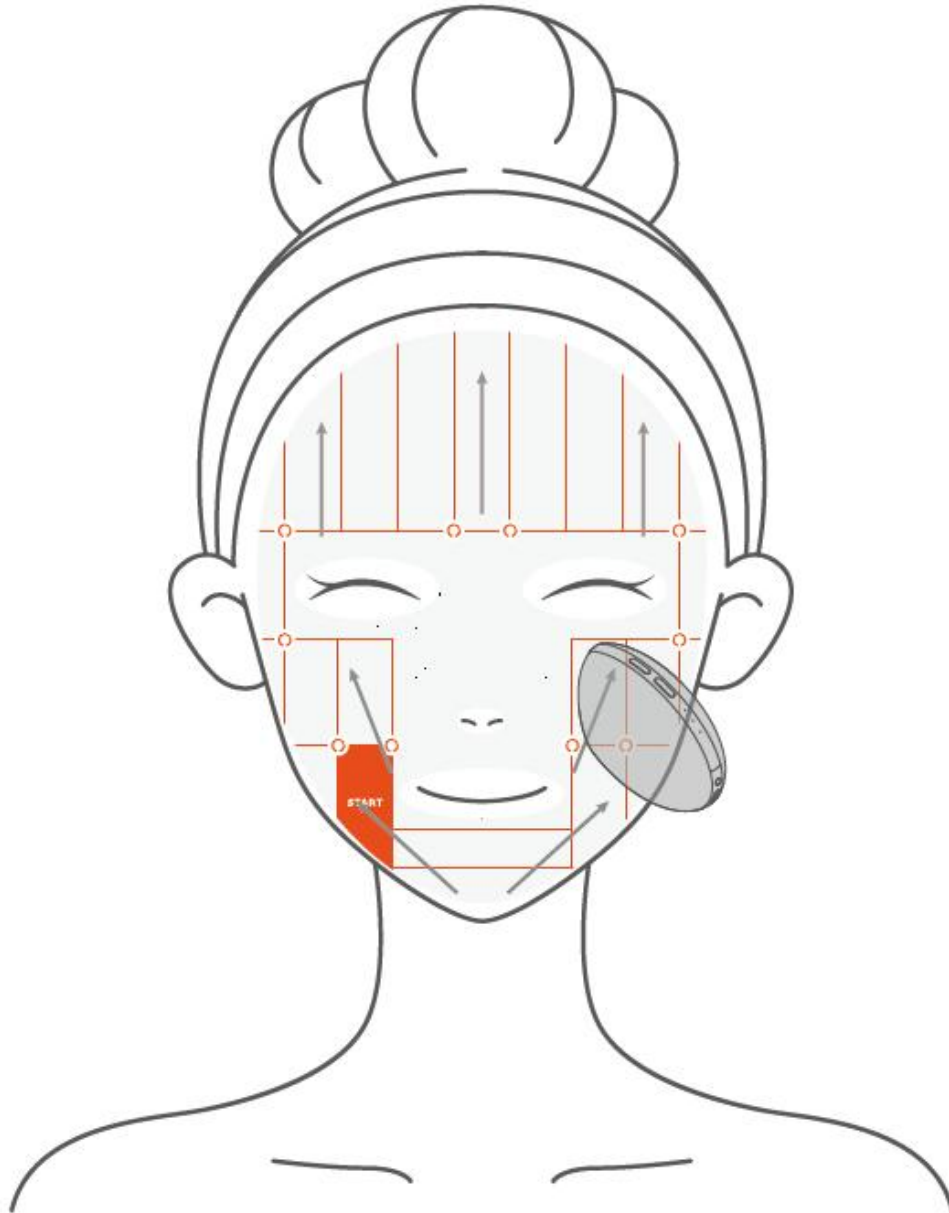
After stamping the face for 5 minutes in the [Deep Anti-Aging Action] mode and the device is powered off, mask can stay for an extra 5-10 minutes.



Green mask is for sensitive skin type, which corresponds to **green** mask indicator after matching with the device and outputs an energy level adapted to sensitive skin type.

[Daily Skin Care]: It is recommended to use once every 2 days.

*[Deep Anti-Aging Action] and [Daily Skin Care] can be combined. It is recommended to use [Deep Anti-Aging Action] for 5 minutes to promote collagen regeneration and [Daily Skin Care] for 4 minutes to lift and firm the skin with the remaining mask essence or gel.



- For both modes, apply on the face in this order: left cheek, right cheek, forehead.
- It is recommended to match this device with AMIRO BEAUTY Hydrating and Plumping Serum Gel or AMIRO BEAUTY freeze-drying facial mask (“freeze-drying facial mask” for short) for better efficacy.

Care steps

Step 1: Makeup removal and cleansing

- Remove make-up and cleanse face and neck thoroughly to ensure the cleanness of skin.

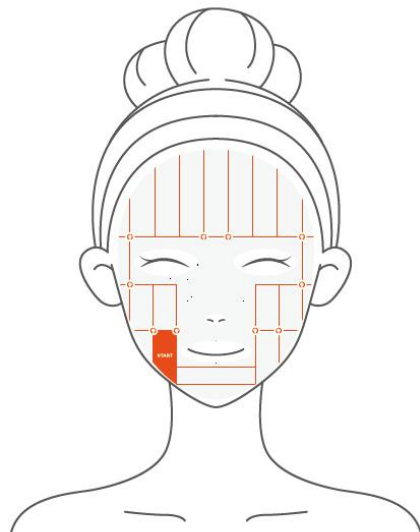


Step 2: Applying the gel or mask

- * Choose the corresponding freeze-drying facial mask or gel according to your needs.

[Deep Anti-Aging Action]: It is recommended to use freeze-drying facial mask for 5 minutes

- Take the mask out, unfold it and apply it to the facial area (the mask should spread evenly on the face).



Step 3: Facial care

***Deep Anti-Aging Action** for 5 minutes

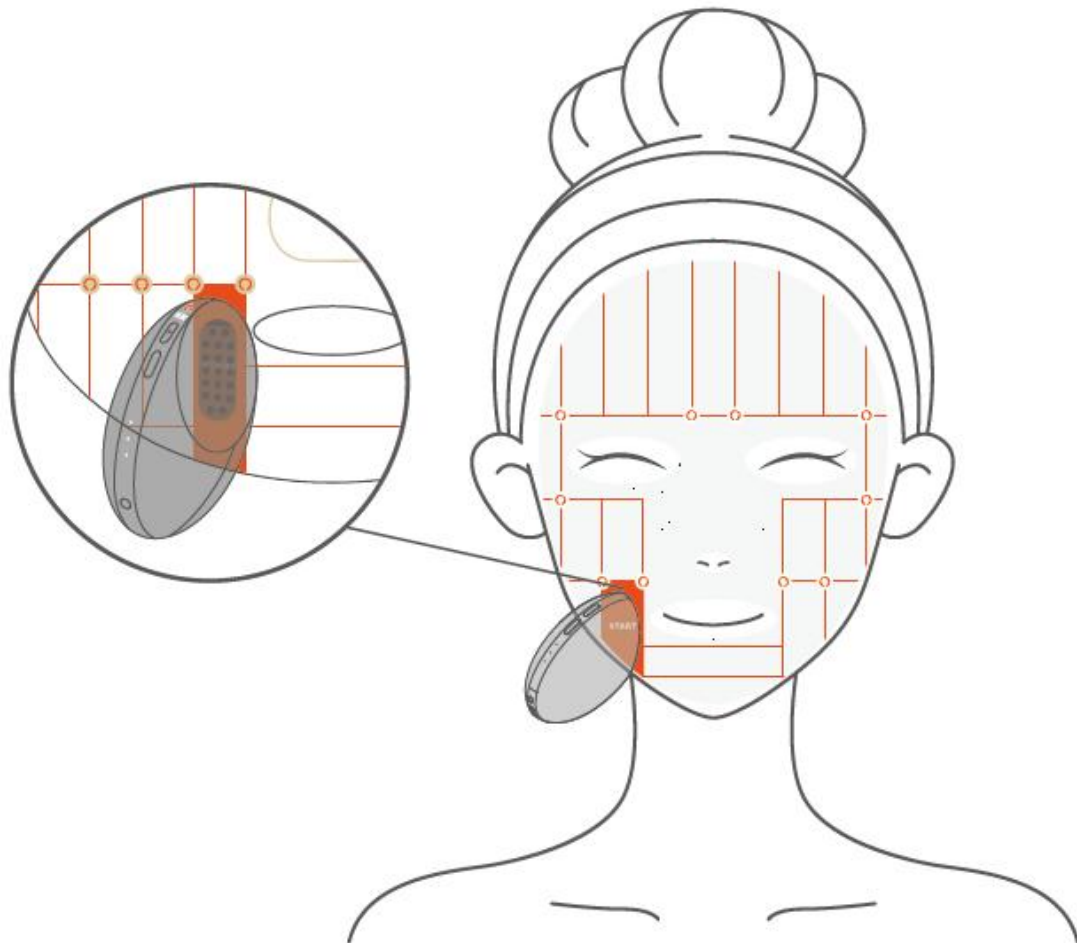
***Daily Skin Care** for 4 minutes

- Start the Golden Dot Matrix RF Skin-tightening Machine and select a mode.
- Press the stamp of the device against your left cheek and start the care. (refer to technique illustration)

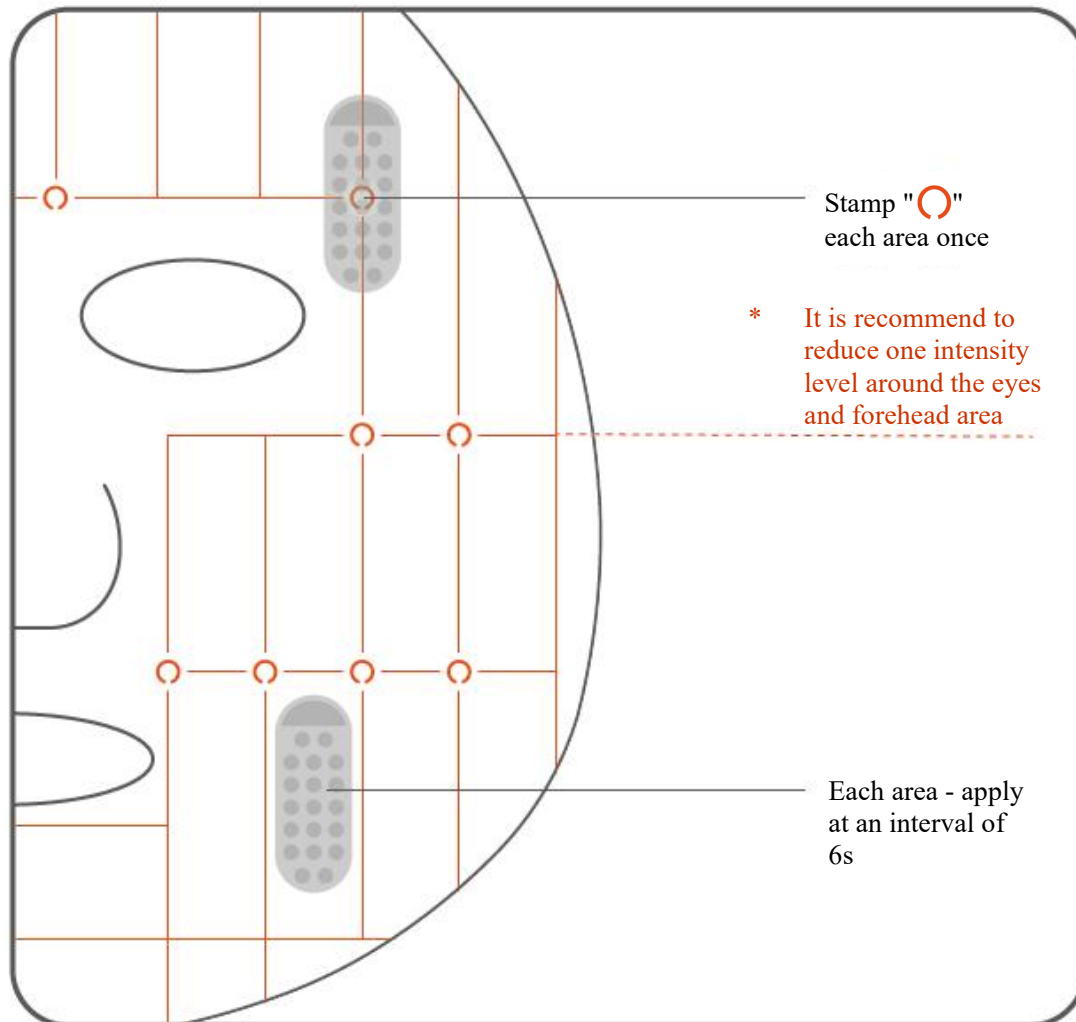
In [Deep Anti-Aging Action] mode, it is recommended to start from Level 1, and there are three recommended methods of using the device:

Method 1: Use with AMIRO BEAUTY freeze-drying facial mask

- Apply the freeze-drying facial mask evenly on the face
- Turn on the device and select Deep Anti-Aging Action mode
- Place the RF panel of the device against the color recognition area of the mask



- After the device recognizes the intelligent mask, the freeze-drying facial mask indicator will be on at the hint of a vibration, and the device will enter the intelligent stamping mode
- [Stamping]: Keep close to each area (super grid) with the RF panel while the device is outputting micro-current and radio frequency. Move to another area (super grid) after applying shock for 6s at the hint of a vibration.



When the device is switched off after 1-second vibration, it means that [Deep Anti-Aging Action] is finished.

Note:

- [Intelligent Stamping Mode] indicators correspond to the mask colors, e.g. the orange mask will correspond to orange indicator after being recognized successfully.

Method 2: Use with non-MIRO BEAUTY freeze-drying facial masks

The Golden Dot Matrix RF Skin-tightening Machine can support the use of different brands of masks

- Apply the mask evenly on the face
- Turn on the device and select Deep Anti-Aging Action mode

- [Stamping]: Keep close to a certain area with the RF panel while the device is outputting micro-current and radio frequency. Move to another area (super grid) after applying shock for 6s at the hint of a vibration.

When the device is switched off after 1-second vibration, it means that [Deep Anti-Aging Action] is finished.

*Note:

- The [intelligent mask recognition] indicator will not light up when other brands of masks are used
- The conductivity, effectiveness and feel of masks of different brands may vary. It is recommended to use fluid essence mask and avoid oil-based masks such as masks in the form of lotion/cream

In [Daily Skin Care] mode, it is recommended to start from Level 1

- Keep enough essence on the face and the treatment area moist
- Turn on and select Daily Skin Care mode
- If the device stays in a certain area for > 1.5 seconds, the energy output will be reduced; energy output of certain intensity will be resumed after the sliding starts
- Move the device to the other cheek at the first hint of vibration and to the forehead area at the second hint of vibration
- When the device is switched off after 1-second vibration, it means that [Daily Skin Care] is finished
- Press the [Power/Mode] button to restart and repeat the above steps

Use with gel:

- Squeeze out some gel and apply it to the center of the RF electrode or the face (When you feel the resistance of the device on face or skin dryness, please replenish gel promptly)



Step 4: Cleanse and hydrate

- After the care routine, wash your face with clean water and apply skin care products if needed

Step 5: Device maintenance

- After the care routine, wipe off the residue on the device with a slightly wet soft cloth, and then dry it with a dry cloth before putting it back in the storage box or pouch

IV. Safety Precautions

Tips:

Before use, please read all the [Safety Precautions] carefully, and use the product in strict accordance with the instructions in this manual.

Operation precautions

- The recommended ambient temperature for this product is 10°C-30°C
- Ensure temperature in the charging environment is between 10-30°C
- When using the device for the first time or if a long time has passed since the last use, first charge the device and make sure all buttons and indicators are normal
- Set intensity to Level 1 when using the device for the first time or before your skin gets used to this device

Precautions before using the product:

- Press the Power/Mode button to check that the product is fully charged for normal use
- Remove make-up and wash off make-up remover before using the product for daily care
- Always remove metal products, glasses and contact lenses from the specified areas before use
- Do not use it for non-beauty purposes
- Do not submerge the device (and base) in water
- Do not use or store the charging base in areas of high humidity

Precautions when using the product:

- Hold the stamp against to the skin during use
- If you experience abnormal skin conditions, stop using the device immediately and contact our after-sales service or consult a professional doctor
- When using the device, make sure the RF electrodes press closely to the skin; if no mask is used, an appropriate amount of gel should be applied; in Daily Skin Care mode, make sure to glide the device slowly and evenly over your skin; if you feel overheated, slide faster or lower the intensity
- When using the device without a mask, do not remain in the same position for a long time to prevent burns. Slide the device over your skin
- Do not look directly at the LED for a prolonged period to prevent damage to eyes
- Do not apply the RF electrodes to the eyelids or around the eyes to prevent damage to eyes
- Differences in individual skin sensitivity may lead to differences in temperature perception, please adjust the device to an intensity ideal for you
- Do not use the product on the same area for a prolonged period to avoid skin damage or infection

Precautions after using the product:

When charging the device, please keep the charging base or charging port dry and clean

- When cleaning the device, keep the power off and disconnect the charging cable and adapter
- When cleaning the charging base, please detach the charging cable from the charging base and keep the charging base dry and clean after cleaning for future use
- It is normal to have slightly red and warm skin after use, please use the device with moisturising/repairing skincare products
- If you experience strong discomfort or abnormal feelings during use, stop using the device immediately and consult a doctor

Disposal of used battery:

- Do not replace the battery during normal use
- Battery leakage hazards: Your skin or clothing should not come into direct contact with battery liquid as it is highly corrosive; in case of any contact, please wipe with a dry cloth immediately, and seek medical attention promptly if you experience any discomfort
- Before disposing of the device, please remove the battery first:
 - ① Remove the product casing
 - ② Remove the internal wires and take out the battery
- When removing the battery, the device must be switched off and disconnected from the power supply
- Safely dispose of the battery

Precautions

- This product is for people above 18 years old. Do not use this product on minors
- This product contains small parts. Keep it out of the reach of children to avoid accidental ingestion
- Do not use it for non-beauty purposes
- Do not use the device on pets as it may cause injury to them
- Do not use the product for purposes other than those specified in the manual so as to avoid personal injury or device failure
- People with physical or mental disabilities should not use this device as it may result in accident or bodily injury
- Do not use the device if it is malfunctioning as it may result in bodily injury or danger
- Do not use the device near flammable substances (such as alcohol, thinner, gasoline, nail polish remover, or hair spray) as it may result in fire, electric shock, or bodily injury
- Do not charge, use or store the product near a fire, heat source, or high temperature area, as it may cause the device to overheat, catch fire, or burst
- Do not use near water sources, in bathrooms or while bathing, as it may result in electric shock, short circuit, or fire
- Do not charge in water, as it may result in electric shock, short circuit, or fire
- Please avoid dropping the device and the base or any collisions to prevent malfunctions or injuries due to the fall. Do not use the device if it has been damaged by a fall or collision
- Avoid contact of the electrodes with metals as it may cause device malfunction and personal injury
- Do not use corrosive solvents (alcohol, thinner, gasoline, nail polish remover, etc.) to wipe the device, as it may damage its surface
- Turn the power off when the device is not in use or being cleaned to prevent electric shock, short circuit, or fire
- Please use power adapter specified by the company and make sure that the adapter is plugged directly into the socket when using the device; do not use an extension cord to avoid electric shock, short circuit or fire
- Please do not disassemble or modify the device, as it may cause fire, electric shock, or physical injury. If the device needs repair, please contact our after-sales service
- If any abnormalities occur during charging, please unplug the power adapter immediately. If there is smoke, noise, or odor during operation, please stop using the device immediately
- Use only disposable consumables recommended by the manufacturer
- Do not use the device together with flammable cosmetics

Warning: Failure to follow the instructions may result in adverse effects

The device is unsuitable for the following groups of people:

People with any of the following conditions may not use this product as it may cause accidents or result in skin or bodily damage:

- Heart disease, abnormal blood pressure, malignant tumors
- Infectious diseases or fever
- Hemorrhagic disease or cicatricial diathesis
- Dysalgesia
- Consult a doctor if you are receiving dental or oral treatment
- Menstruation, pregnancy or breastfeeding
- Puberty or adolescence
- Metal implants around the application area
- Diseases such as cancer (especially skin cancer and pre-cancerous moles), acute diseases, tuberculosis, febrile diseases, infectious diseases, blood diseases, visceral diseases, skin diseases, allergic dermatitis, etc.
- Impaired immune system due to immunosuppressive diseases such as AIDS, or taking immunosuppressive drugs
- Consult a doctor if you have had permanent plastic fillers within the application area, or you have temporary dermal fillers or Botox implanted within the application area
- Any disease within the application area due to thermal irritation, such as recurrent herpes simplex virus
- Possible blemishes within the application area cause by physical irritation
- Allergic, sensitive or susceptible skin
- Fatigue, illness, under the influence of alcohol or sleeping pills
- Dilated capillaries caused by prolonged use of steroids, hormones, and other drugs, or liver dysfunction
- People using the following medical devices: Assistive devices implanted in the body such as artificial lungs, pacemakers, internal defibrillators, or portable devices such as electrocardiographs

Where device should not be applied:

Do not use this product on the following body parts or if the following conditions exist to avoid malfunction of the device:

- Unspecified parts
- Throat nodules, eyeballs, eyelids, oral cavity, private parts, mucous membranes, etc.
- Lymphatic areas of the face and neck
- Severe acne in the application area
- Purulent and inflamed skin, previous scarring or abnormal wound healing
- If you have undergone surgeries such as laser peeling or chemical peeling in the last 3 months or have healing wounds within the application area
- Skin inflammation or redness due to sunburn
- Pathological pigmentation on the skin
- Protruding moles or viral warts on the skin
- Dermatological conditions such as rashes, inflammation, itchiness, etc.

Note: The above list of safety precautions is not exhaustive. If you are unsure whether you can use this product, please consult a doctor or contact us.

V. Table of Common Malfunctions

Problem	Possible cause	Solution
Start failure	Dead battery	Charge fully before use
	End of battery life	Contact the manufacturer for repair or replacement
Automatic power off	No operation for more than 120 seconds	Restart the device
	Dead battery	Charge fully before use
	RF device electrodes not tightly pressed against the skin	Keep RF device electrodes tightly pressed against the skin
	Inappropriate gel	AMIRO gel is recommended
	Insufficient gel	Replenish gel on the face
Charging failure	Mismatched charging device	Use officially designated charging device
Reduced infrared light brightness and flashing of the stamp	Temperature control malfunction	Please stop using the device, switch it off and contact after-sales service
Overheated face	High intensity	Lower intensity
	RF device stays in the same area	Slightly speed up RF device sliding
	Insufficient gel	Replenish gel on the face
Low heat	Low intensity	Increase intensity
	Fast sliding of the device	Slightly reduce device sliding
	Mask recognition failure	AMIRO BEAUTY freeze-drying facial mask is recommended
Tingling caused by current	Device not pressed against the skin	Press the device against the skin
	High intensity of EMS	Lower intensity
Redness of skin after use	RF heat	It normally recovers soon afterwards; please seek medical attention if you don't recover or have other discomfort.