

Jelly Comb

Wireless Stereo Headphones TV/PC/DVD Wireless Audio USER GUIDE

Welcome!

Thank you for purchasing the Jelly Comb Wireless Stereo Headphone System. Before operating the unit, please read this manual thoroughly and remain it for future reference.

Some features are:

- Wireless transmission lets you enjoy TV or music without the restriction of a cord
- Up to 66-99 feet reception range upon an open ground
- Compact, foldable and portable
- Can use "ONE TO MANY" and all of the headphones can connect to the same sender.
- Hassle-free recharging by simply connecting the headphones to a 5V output power supply with USB port, no need to change the batteries. With the 3.7V built-in lithium battery, you can enjoy a longer playing time of 8-10 hours once fully charged.
- Automatically goes into mute mode when there is no signal or if beyond the effective range

For any inquires, please contact support@jellycomb.com

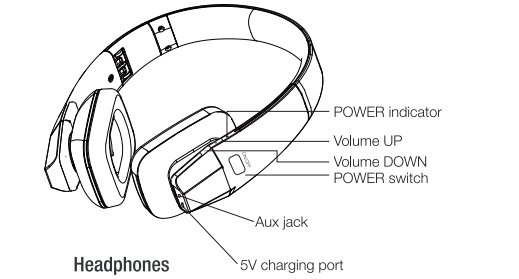
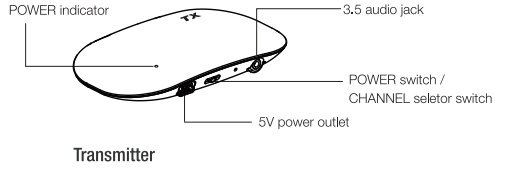
- Easy connection to TV and Audio system equipment
- Enhanced clarity of sound with minimal transmission noise by use of noise reduction technology
- Headphones automatically turn off when there is no signal within 5 minutes

Notes on receiving performance

This system utilizes specific frequency signals in the 109MHZ/110MHZ band so the receiving performance may deteriorate due to the surroundings. The following examples illustrate conditions that may reduce the reception range or cause interference.

- Inside a building with walls containing steel beams.
- An area with many steel file cabinets, etc.
- An area with many electrical appliances capable of generating electromagnetic fields.
- The transmitter is placed on a metal instrument.
- An area facing a roadway.
- Noise or interfering signals exist in the surroundings due to radio transceivers in trucks, etc.
- Noise or interfering signals exist in the surroundings owing to wireless communication systems installed along roadways.

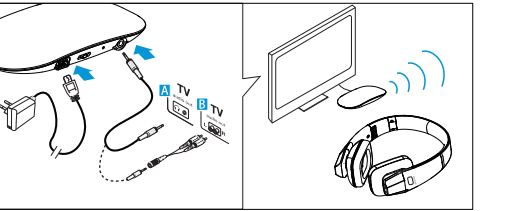
Product layout:



Operating the System

Setting up the transmitter Connect the transmitter to audio/video equipment.

1. Plug the AC power adaptor to a power source, the POWER indicator glows blue, then set the CHANNEL selector switch to A or B position (both are fine for signal receiving).
2. When use two transmitters at the same time in the same place, please make sure the channel of each transmitter is different in order to avoid signal interference.
3. Plug one side of the audio cable to the transmitter, and insert the other side into the audio/video equipment.
4. Audio cable functions as the transmit antenna.
5. After you change the channel of the transmitter, press the POWER switch of the headphone once to switch to corresponding type of channel.



!Note :

- * Refer to documentations of a connected component for details about the specifications or the settings for audio out jacks
- * Use only the supplied AC power adaptor. Do not use any other AC power adaptor.
- * When the transmitter is placed on or near a TV, it may pick up a noise. In such a case, place the transmitter away from the TV.

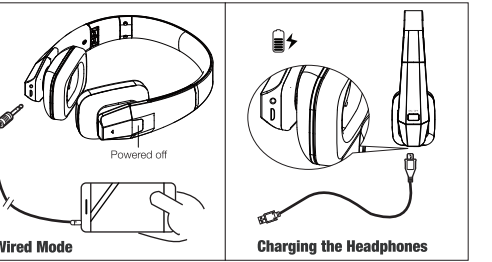
Operating the headphones

Wireless Mode

1. Press and hold the POWER switch for about 0.5 seconds to turn on the headphones, then POWER indicator glows blue. Press the POWER switch once, then it will search for the signal automatically. When you change the channel of the transmitter, press POWER switch of the headphone once for frequency shift.
2. Press Volume UP button to increase the volume. Press Volume DOWN button to decrease the volume.
3. When power is on, press and hold POWER switch for 1 second to turn it off.

Wired mode / Charging the headphones

1. When connect the headphone to an audio/video equipment directly with an audio cable, make sure it is powered off when used.
2. When charging the headphone, the POWER indicator glows red, and it will turn off when fully charged. Do not use the headphone while charging.



Sending signals from the transmitter

The transmitter starts sending signals automatically when it detects an audio signal from the connected equipment.

If the audio signal is very weak, the transmitter does not send signals. It will start sending the signals when the transmitter receives an audio signal again.

If the transmitter is connected to a headphone jack, make sure the volume of the equipment connected is set to the position which is higher than normal setting.

Troubleshooting:

No sound/Muffled sound

1. Check whether the switch of transmitter is turned to A or B
2. Check the connection of the audio/video equipment or the AC power adaptor.
3. Check that the audio/video equipment is turned on
4. Turn up the volume on the connected audio/video equipment, if the transmitter is connected to the headphones jack
5. When headphone used as a wired one with Muffled sound (connect the headphone directly to the audio/video equipment) , check the power of it, and make sure it is powered off when used
6. When there is static when headphones is near the transmitter, check whether the audio line is connected properly

Precautions

1. If the headphones can not be powered on, please fully charge the headphones before turn it on.
2. To expand the life of battery, please turn it off when you don't want to use it.
3. When first use the headphone, please charge it at least 4 hours.

4. Please charge periodically if the headphone is not to be used for a long period of time.
5. If the transmitter is not to be used for a long period of time, disconnect the AC power adaptor from the AC outlet by holding the plug. Do not pull the cord.
6. Do not leave the wireless stereo headphone system in a location subject to direct sunlight, heat or moisture.
7. Non professionals do not disassemble the machine.
8. When headphones can not be turned on, please charge the headphones

Notes on headphones

To reduce the risk of hearing damage

Avoid using headphones at high volume. Hearing experts advise against continuous, loud and extended play. If you experience a ringing in your ears, reduce the volume or discontinue use.

Caring for others

Keep the volume at a moderate level. This will allow you to hear outside sounds and to be considerate to the people around you.

If you have any questions or problems concerning the system that are not covered in this manual, please consult our customer service.

Specifications:

General

Carrier frequency : 109MHZ, 110MHZ
Channel : A, B
Frequency response : 100HZ-15000HZ

Transmitter

Power source :
DC 100V-240V : supplied AC/DC power adapter
Audio input : Phone jacks
Dimensions : Approx. 4.6 x 2.6 x 0.6 inches

Headphones

Power source : 3.7V built-in lithium battery

Package included

- 1 x transmitter
- 1 x headphone
- 1 x 3.5mm audio cable
- 1 x 3.5mm stereo female to RCA male connector
- 1 x AC/DC adaptor
- 1 x USB cable