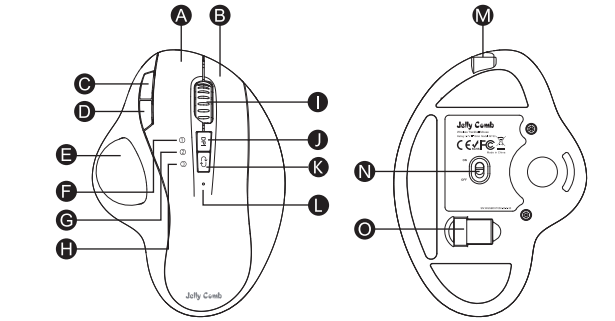


User Manual

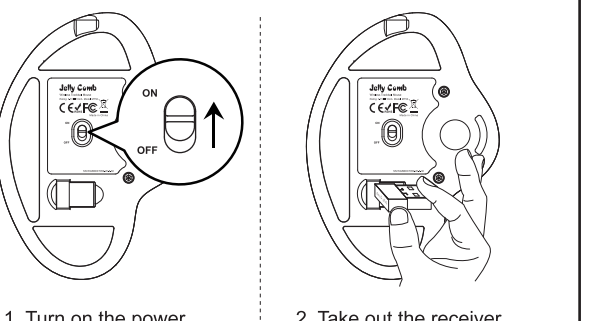
2.4G+Bluetooth+Bluetooth Wireless Rechargeable Trackball Mouse

Product Features



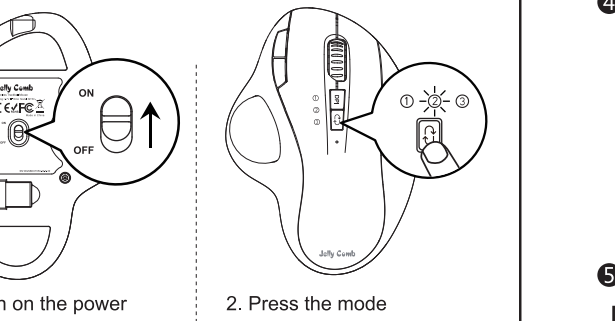
- A Left click
- B Right click
- C Forward button
- D Backward button
- E Trackball
- F USB indicator light
- G Bluetooth 1 indicator light
- H Bluetooth 2 indicator light
- I Scroll wheel
- J DPI button
- K 2.4G/Bluetooth mode switch button
- L Charging indicator
- M TYPE-C Charging port
- N Power switch
- O USB receiver

2.4G USB Connection



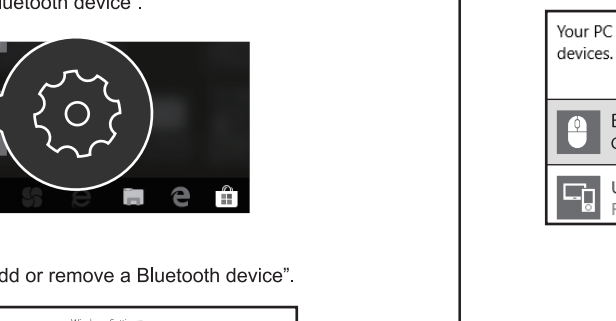
1. Turn on the power switch to ON.
2. Take out the receiver.
3. Press the mode switch button until the white light is on and enter USB mode.
4. Insert the usb receiver into your computer's usb port.

Bluetooth Connection



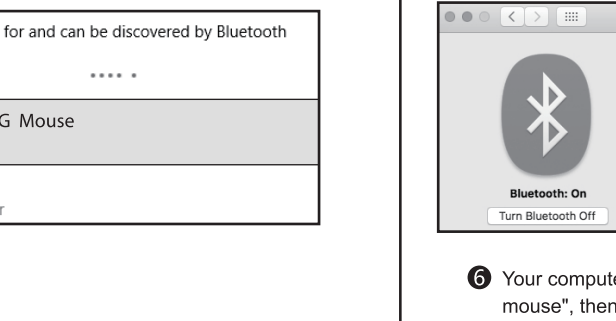
1. Turn on the power switch to ON.
2. Press the mode switch button and switch to ② or ③ mode, the white light flashes slowly.
3. Press and hold the mode switch button for 3-5 seconds until the white light flashes quickly, then the mouse enters the Bluetooth pairing mode.

Windows 10 System



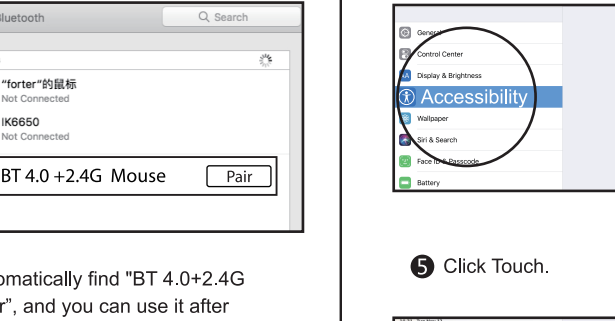
4. Click "Bluetooth device".
5. Click "Add or remove a Bluetooth device".
6. Your computer will automatically search for "BT 4.0+2.4G mouse" and then click "pair".

Mac OS System



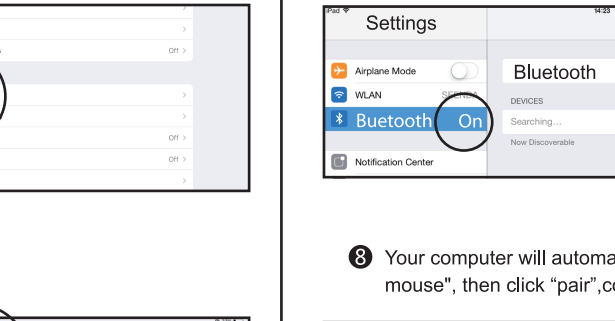
4. Click "System Preferences" on Mac.
5. "BT 4.0+2.4G mouse" is connected and can be used normally.

iOS System



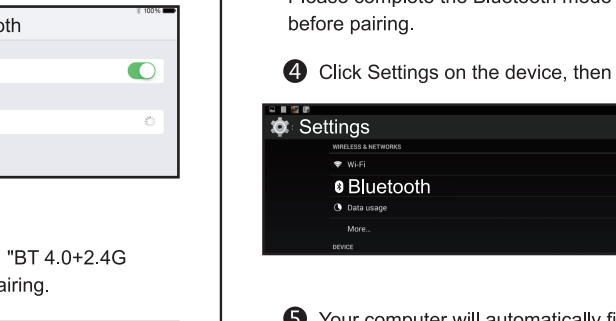
5. Click "Bluetooth" in "System Preferences".
6. Your computer will automatically find "BT 4.0+2.4G mouse", then click "pair", and you can use it after installation.

Android system



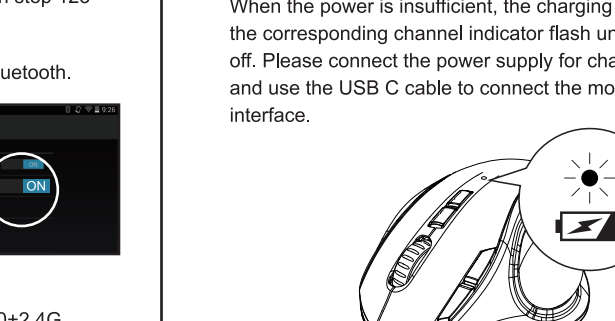
4. Click Settings on your device, then turn on Accessibility.
5. Click Touch.
6. Turn on Assistive Touch.
7. Click Settings on the device, then turn on Bluetooth.
8. Your computer will automatically find "BT 4.0+2.4G mouse", then click "pair", complete pairing.
9. "BT 4.0+2.4G mouse" is connected and can be used normally.

Android system



4. Click Settings on the device, then turn on Bluetooth.
5. Your computer will automatically find "BT 4.0+2.4G mouse", then click "pair", complete pairing.
6. "BT 4.0+2.4G mouse" is connected and can be used normally.

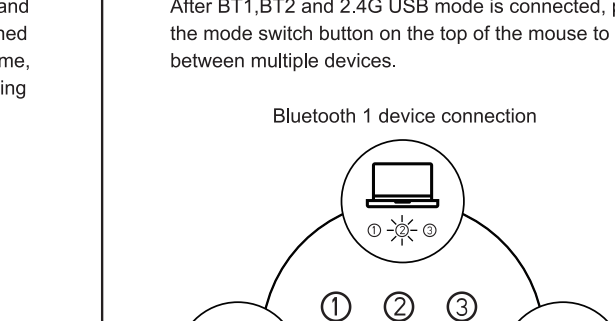
Charging Function Guide



When the power is insufficient, the charging indicator and the corresponding channel indicator flash until it is turned off. Please connect the power supply for charging in time, and use the USB C cable to connect the mouse charging interface.

Connect the charging cable to the USB port of the computer, the charging indicator is always on during charging, the charging time is about 1-3.5 hours and the indicator light turns off when charging is complete.

How to Switch Connection Mode



After BT1,BT2 and 2.4G USB mode is connected, press the mode switch button on the top of the mouse to switch between multiple devices.

Bluetooth 1 device connection

2.4G USB connection

Bluetooth 2 device connection

Press the mode switch button on the top of the mouse to switch between 3 devices.

Data Parameters

- Basic parameter:**
 Chip: Nordic NRF51802W
 Engine: Optical
 Lithium battery capacity: 600mA
 Mouse DPI: 1000-1600-2400
 Click life: 3 million+
 Dimension: 133.6*96.6*47.5mm
 Weight: 135g
- 2.4G transmission parameters:**
 Transmission distance: 20m
 Working Voltage: 3.7V
 Working current: 5.5mA
 Reaction rate: 250Hz
- System requirement:**
 An available USB port
 Windows XP, Windows 7, Windows 8, Windows 10 or higher version
 Mac OS x 10.10 or higher version
- Bluetooth transmission parameters:**
 Transmission distance: 10m
 Working Voltage: 3.7V
 Working current: 4mA
 Reaction rate: 125Hz
- System requirement:**
 Bluetooth-enable device
 Windows 8, Windows 10 or higher version
 Mac OS x 10.10 or higher version
 Android 4.3 or higher version

Package Content

- ▶ 1 x Wireless Mouse
- ▶ 1 x USB Receiver
- ▶ 1 x USB C Charging Cable
- ▶ 1 x User Manual