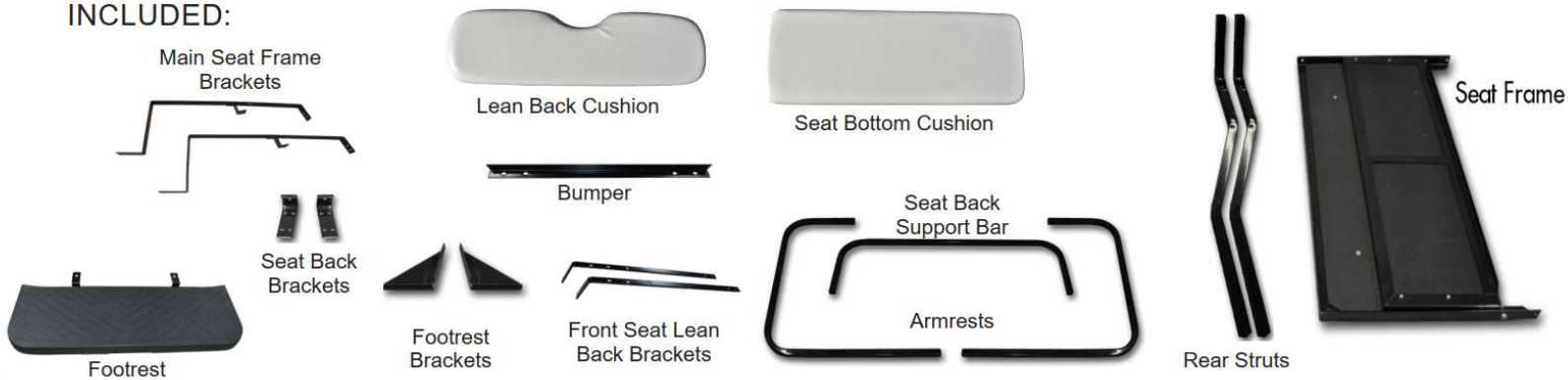




TITAN 500 Rear Flip Seat Installation Instructions for Club Car® DS®

**Cushions not included in Frame Only Kits*

INCLUDED:



STEP 1

Switch the key switch to the OFF position and engage the parking brake.

Remove all rear factory components including canopy, struts, bumper, motor cover, front seat and seat bracket. Retain canopy hardware.



STEP 2

Install new bumper using 10x30mm bolts from PACK 1.

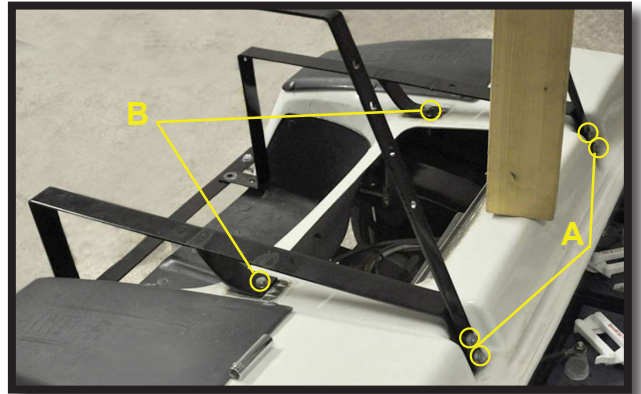


STEP 3

A) Install Main Seat Frame Brackets and Front Seat Lean Back Brackets to front with retained hardware.

B) Using 8x30mm bolts from PACK 1, secure middle of Main Frame Brackets to cart.

NOTE: Replace Motor Cover once bolts are tightened.



STEP 4

Slide mounting tabs of Footrest between Main Seat Frame Brackets and Bumper as shown.

Attach all parts together using 10x30mm bolts from PACK 1.



STEP 5

Attach Seat Frame to the front portion of the Main Frame Brackets using 10x25mm bolts from PACK 2.



STEP 6

IMPORTANT: DO NOT tighten hardware until Step 12 is complete.

Attach Seat Frame to the rear portion of the Main Frame Brackets using 10x25mm bolts from PACK 2.

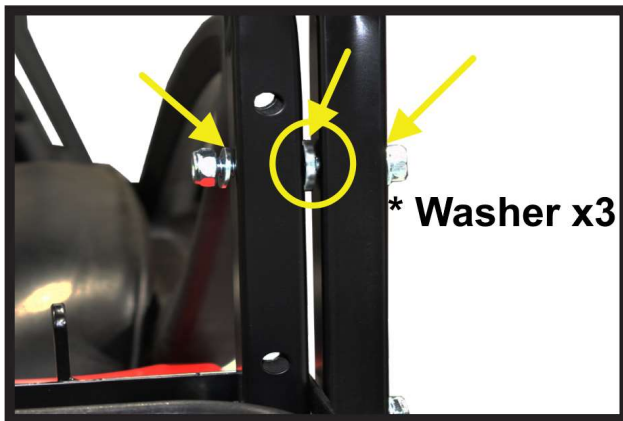
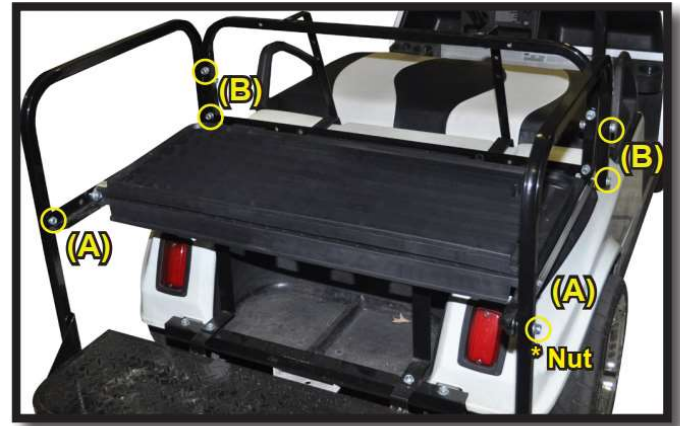


STEP 7

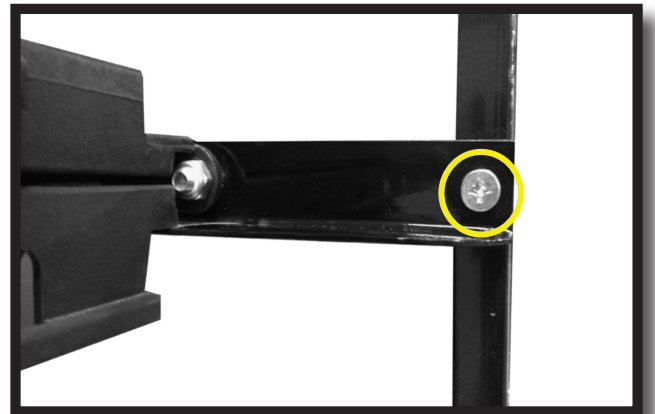
Place Seat Back Support Bar in rear of Seat Frame as shown.

A) Attach Arm Rests to the front of Seat Frame using the 10x45mm Countersunk bolts from PACK 3. Repeat process on the other side.

B) Using 10x70mm bolts and washers from PACK 3, attach the Arm Rests to the rear of the Seat Frame and Seat Back Support Bar.



*Countersunk Bolt



STEP 8

Attach bottom of Arm Rests to Footrest using the Footrest Brackets and 10x70mm bolts from PACK 3.



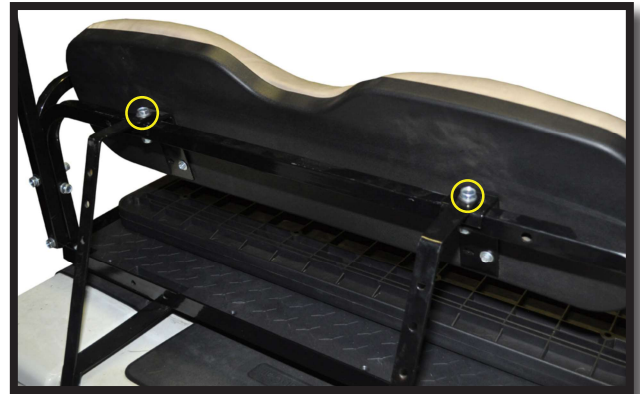
STEP 9

Using the 6mm hardware from PACK 4, attach the Seat Back Brackets to the Rear Lean Back Cushions as shown.



STEP 10

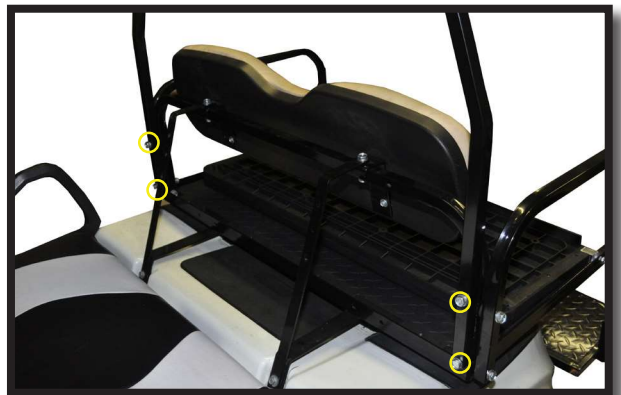
Attach Seat Back Cushion with Brackets between the Seat Back Support Bar and Front Lean Back Brackets. Secure using 10x45mm bolts from PACK 5.



STEP 11

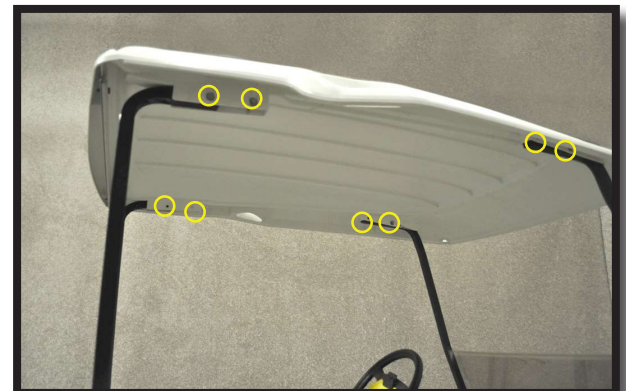
For older models (1982-2000.5) carts with (2) Lean Back Cushions you will need to install Candy Cane Struts (sold separately).

For models 2000.5 and Up, use the new Rear Struts supplied with this kit. Attach struts to the Seat Back Support Bar using 10x70mm bolts from PACK 5.



STEP 12

Attach canopy to struts using hardware from Step 1.



You can now tighten ALL seat kit hardware

STEP 13

Make sure the thickest part of the Seat Bottom is towards the rear. Center Seat Bottom from left to right on flip frame. Insert Nylon Seat Strap between Seat Bottom and Flip Frame at desired location. Press cushion firmly against Seat Frame. Using countersunk bolts from Pack 6, tighten the Seat Bottom to Seat Frame as shown.



INSTALLATION COMPLETE

HARDWARE PACK

Pack 1

- 2 - 8x30mm Hex Bolt
- 4 - 10x30mm Hex Bolt
- 8 - 10x20mm Flat Washer
- 4 - 8x16mm Flat Washer
- 2 - 8mm Lock Nut
- 4 - 10mm Lock Nut

Pack 2

- 4 - 10x25mm Hex Bolt
- 8 - 10x20mm Flat Washer
- 4 - 10mm Lock Nut

Pack 3

- 6 - 10x70mm Hex Bolt
- 2 - 10x45mm Countersunk
- 16 - 10x20mm Flat Washer
- 8 - 10mm Lock Nut

Pack 4

- 4 - 6x25mm Hex Bolt
- 4 - 6mm Flat Washer
- 4 - 6mm Lock Washer

Pack 5

- 4 - 10x70mm Hex Bolt
- 2 - 10x45mm Hex Bolt
- 12 - 10x20mm Flat Washer
- 6 - 10mm Lock Nut

Pack 6

- 8 - 8x30mm Countersunk

Club Car® DS® are registered trademarks of Ingersoll Rand, Inc. Reference to Ingersoll Rand's trademarks and products is solely for the purpose of identifying golf carts with which this product is compatible. These products are aftermarket parts and are not original equipment parts. Excalibur is not connected, affiliated with, or sponsored by Ingersoll Rand® or Club Car®.