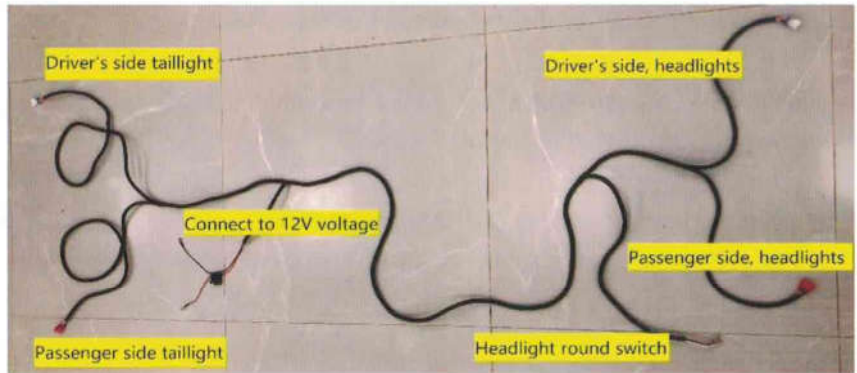




EXCALIBUR SUPREME LED LIGHT KIT - CLUB CAR TEMPO



Tools Needed for Installation

- T15 Torx socket
- T30 Torx socket
- T40 Torx socket
- 13mm socket
- 10mm wrench
- Small Flat Head Screwdriver
- #2 Phillips Tip
- 15/32" Drill Bit
- 1-1/2" Hole Saw Bit
- Rotary Cutting Tool
- Wire Snake
- Sandpaper

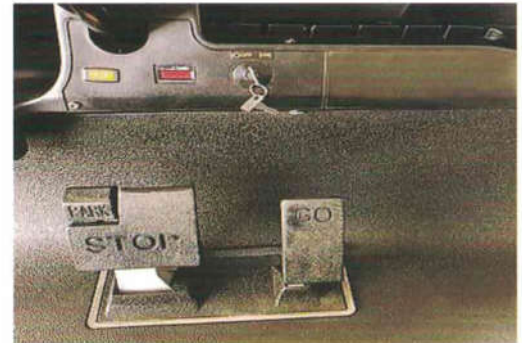
Include

- Headlights and Taillights
- Wiring Harnesses
- Cable Tie Scre

Caution: Please read through the instructions carefully. Before starting this project, remove the system's positive and negative connections from the battery or battery pack. This kit is designed for a 12V operation only.

Before You Start

1. Turn the key to the OFF position.
2. Place the TOW/RUN switch in the TOW position (electric carts).
3. Remove the system's positive and negative connections from the battery or battery pack.
4. Engage the parking brake.



STEP 1

1-1.

Remove the dash panel by removing the Torx bolts and retain hardware.



1-2.

Completely remove the front seat bottom assembly.

Loosen the (4) Torx screws that secure the floor mat and retainer rocker panels to the vehicle. Lift out mat and retain hardware.

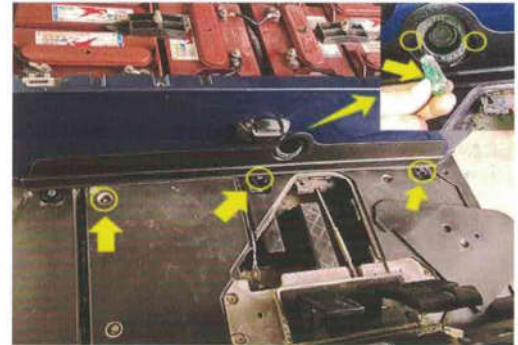
Remove the front body screws (2). Retain hardware.



1-3.

Using a small screwdriver, pry charge receptacle cover from vehicle.

Remove the screws (3) securing the lower body trim to the body. Retain hardware. Remove the lower body trim.



STEP 2

2-1.

From the battery compartment, route the 6-pin connector portion of the new harness along the floor channel on the passenger side of the vehicle to the dash.



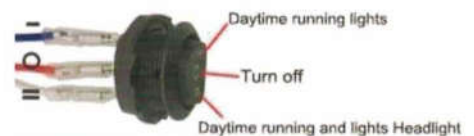
2-2.

Place the headlight harness and horn harness of the 6-PIN connector through the hole on the right side of the instrument panel.

Using a 15/32" drill bit, find a desired location on your golf cart dashboard to mount your switch for headlight. (Please check the back of the position where you need to drill, so as not to damage the wiring harness on the back of the dashboard)

* The circular three-gear switch is a headlight backup switch that can be installed or not installed.

* (" o " is off) (" - " is day running light) (" = " is Low beam lights)

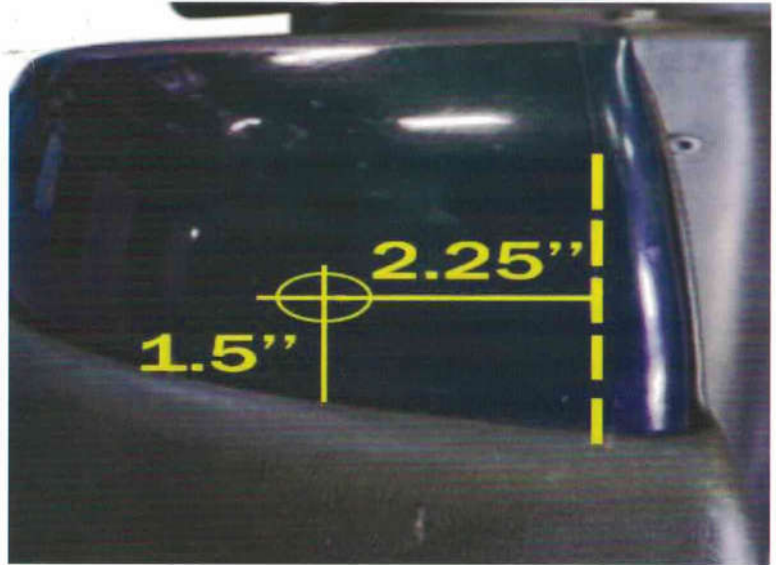


STEP 3

3-1.

Mark the center of the taillight hole using drawing below using a 1-1/2 inch hole saw, drill a hole in the location as shown in drawing.

Sand hole to remove sharp edges. Repeat Step 2 for passenger side. Connect the tail light to the wire harness pulled out from the hole in the rear of the vehicle body.



3-2.

Clean the installation surface with rubbing alcohol. Remove the paper on the double-sided tape, and then install the tail light on the rear of the vehicle body.

Use the included screws to further secure the taillights. Pay attention to the angle of the screw that is screwed into the tip of the tail light.

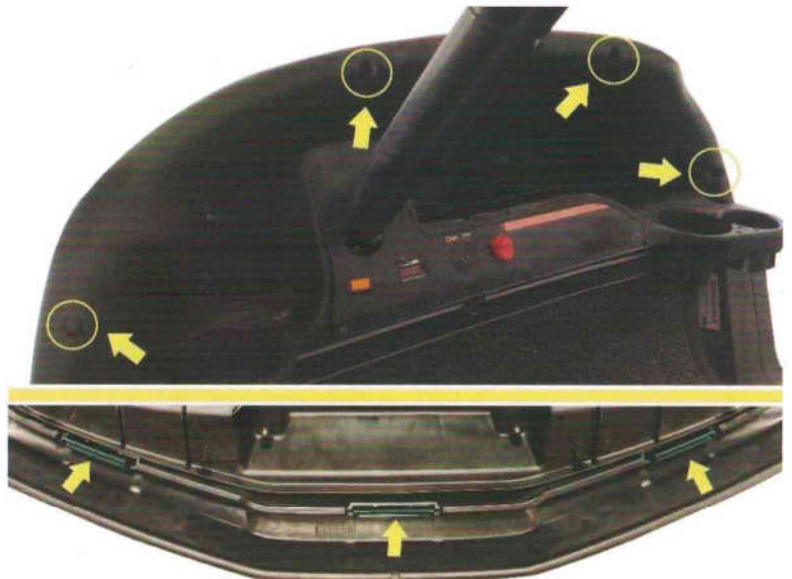


STEP 4

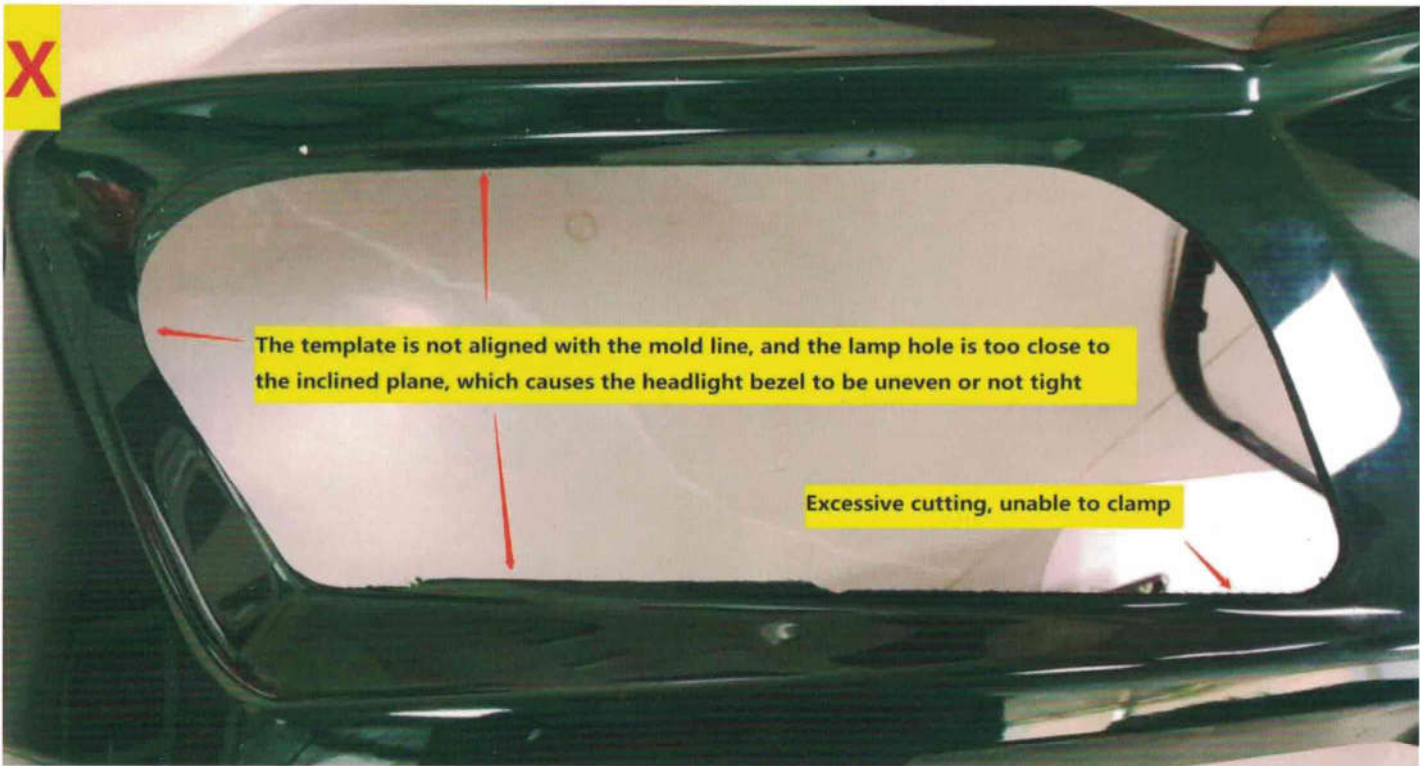
4-1.

Remove the trim around the dash / front cowl .

Remove the front cowl by pushing the tabs towards the inside of the cart and lifting the cowl upward and off the cart.



NOTE: As the picture shows, Use a utility knife or scissors to cut out the template. The black graffiti in the template is the buckle position of the headlight bezel. When cutting the lamp hole of the fairing, please cut carefully. Excessive cutting will lead to failure of the large lampshade buckle.

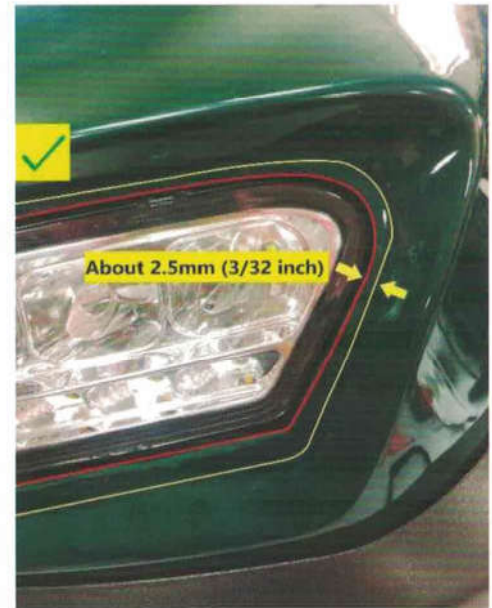


4-2.

Place the template on the Passenger side front cowl and align it with the cowl mold lines. Secure with painter's tape. Trace the inside contour of the template using a marking device.

Test whether it fits the black bezel of the headlight and make any adjustments. Once the black bezel of the headlight fits, sand down any rough edges. (The width of the position marked in the picture on the right is about 2.5mm)

Turn the template over, mark the buckle position of the headlight cover on the template, and then repeat the above operation on the driver's side.



4-3.

As shown in the figure, remove the screw at the marked position, use this screw to fix one end of the headlight base, and fix the other end with a 5mm self-tapping screw. (Please manually tighten the screws)



The convex corner of the headlight base is inserted into the groove.

Install driver's side headlights

4-4.

Connect the headlight harness and reinstall the fairing. (Please do not install eyebrow caps for now)

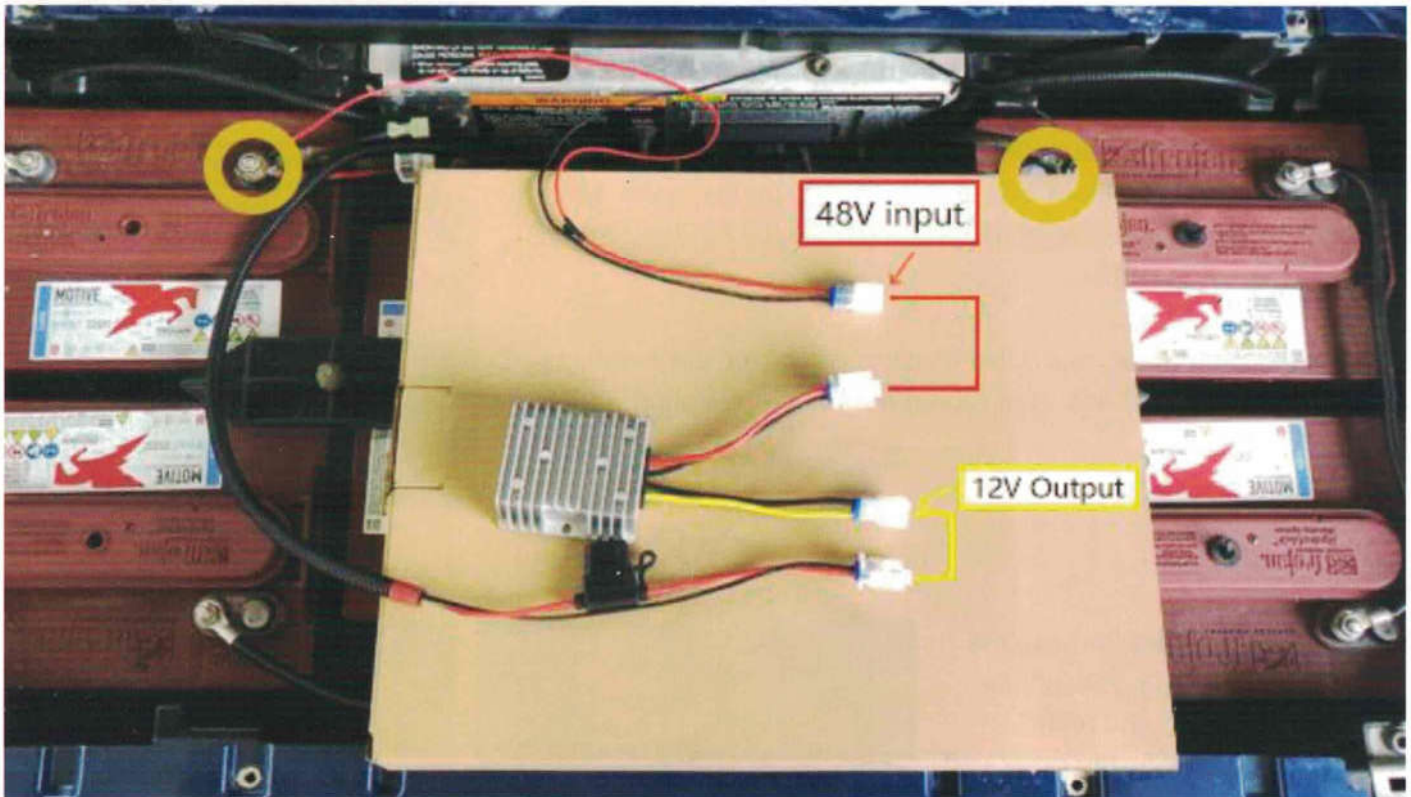
Install the headlight bezel and enter it first at the larger rounded corners in the outer direction.

Install the driver's side headlight bezel.



Check whether the position of the headlight bezel is appropriate, and then install the eyebrow cap.

About battery connection



1. As shown in the figure above, the red and black wires with the ring terminals are connected to the battery pack's 48V output positive and negative terminals.
2. The 48V input is connected to the red and black wires of the step-down.
3. The 12V output of the step-down is connected to the red and black wire inputs of the barrel wire harness

Note: Excessive voltage will make the headlights brighter, causing lamp beads or components to burn out or shorten the life span. you need to buy a special 4V 36V to 12V vehicle device, 48V or 36V battery string voltage down to 12V, this headlight kit can only be used under 12V voltage.

Drawing power from only one or two cells will cause that cell to be out of balance with the rest of the pack. That battery can be chronically undercharged, while the rest can be overcharged, causing damage to the entire battery pack.

E-Z-GO®, TXT® and RXV® are registered trademarks of Textron Innovations, Inc. Club Car®, Precedent®, DS®, Onward® and Tempo® are registered trademarks of Ingersoll Rand, Inc. Yamaha®, Yamaha® Drive®, Drive2®, G-14®, G-16®, G-19®, G-22® and G-29® are registered trademarks of Yamaha Golf-Car Company. Any reference to Club Car®, E-ZGO®, or Yamaha® or their associated trademarks, word marks, and products are only for purposes of identifying golf carts with which this product is compatible. This product is an after-sales part and not an original equipment part. is not connected to, affiliated with, sponsored by, or endorsed by either Textron Innovations, Inc., Ingersoll Rand, Inc., Yamaha Golf Cart Company, or any of their parent or subsidiary companies.