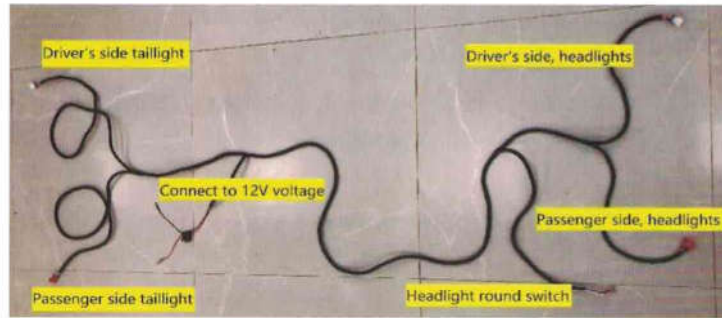




EXCALIBUR SUPREME LED LIGHT KIT - CLUB CAR PRECEDENT



Tools Needed for Installation

- T15 Torx socket
- T30 Torx socket
- T40 Torx socket
- 13mm socket
- 10mm wrench
- Small Flat Head Screwdriver
- #2 Phillips Tip
- 15/32" Drill Bit
- 1-1/2" Hole Saw Bit
- Rotary Cutting Tool
- Wire Snake
- Sandpaper

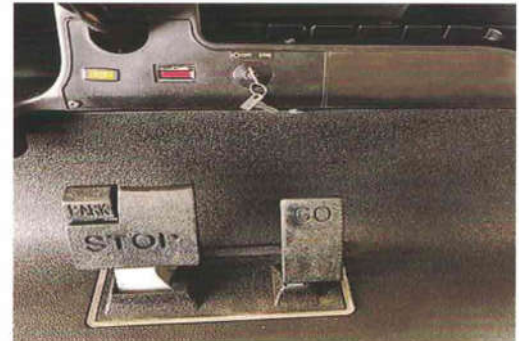
Include

- Headlights and Taillights
- Wiring Harnesses
- Cable Tie Scre

Caution: Please read through the instructions carefully. Before starting this project, remove the system's positive and negative connections from the battery or battery pack. This kit is designed for a 12V operation only.

Before You Start

1. Turn the key to the OFF position.
2. Place the TOW/RUN switch in the TOW position (electric carts).
3. Remove the system's positive and negative connections from the battery or battery pack.
4. Engage the parking brake.



STEP 1

1-1.

Remove the dash panel by removing the Torx bolts and retain hardware.



1-2.

Completely remove the front seat bottom assembly.

Loosen the (4) Torx screws that secure the floor mat and retainer rocker panels to the vehicle. Lift out mat and retain hardware.

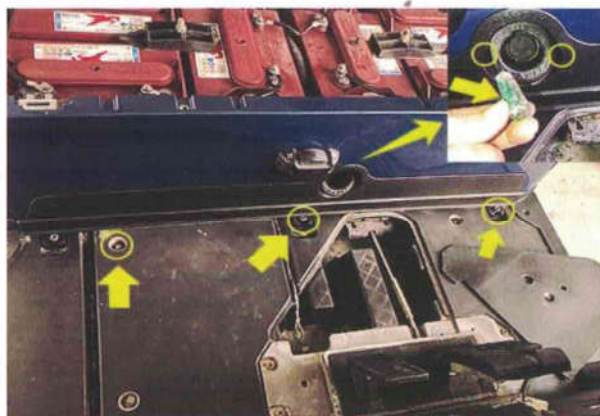
Remove the front body screws (2). Retain hardware.



1-3.

Using a small screwdriver, pry charge receptacle cover from vehicle.

Remove the screws (3) securing the lower body trim to the body. Retain hardware. Remove the lower body trim.



STEP 2

2-1.

From the battery compartment, route the 6-pin connector portion of the new harness along the floor channel on the passenger side of the vehicle to the dash.



2-2.

Place the headlight harness and horn harness of the 6-PIN connector through the hole on the right side of the instrument panel.

Using a 15/32" drill bit, find a desired location on your golf cart dashboard to mount your switch for headlight.

* The circular three-gear switch is a headlight backup switch that can be installed or not installed.

* (" o " is off) (" - " is day running light) (" = " is Low beam lights)

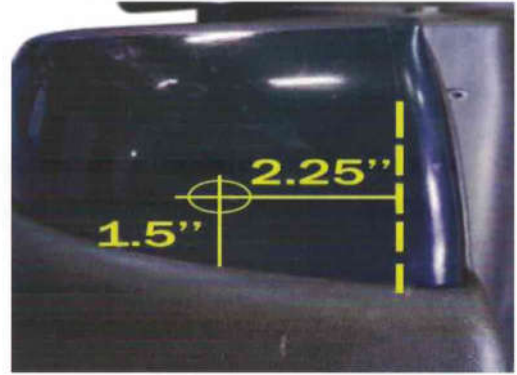


STEP 3

3-1.

Mark the center of the taillight hole using drawing below using a 1-1/2 inch hole saw, drill a hole in the location as shown in drawing.

Sand hole to remove sharp edges. Repeat Step 2 for passenger side. Connect the tail light to the wire harness pulled out from the hole in the rear of the vehicle body.



3-2.

Clean the installation surface with rubbing alcohol. Remove the paper on the double-sided tape, and then install the tail light on the rear of the vehicle body.

Use the Included Screws to further secure the taillights.

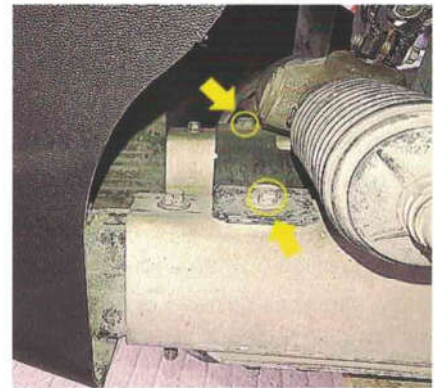
Use the included screws to further secure the taillights. Pay attention to the angle of the screw that is screwed into the tip of the tail light.



STEP 4

4-1.

Remove factory bumper by removing the two factory bolts located in the frame. Retain hardware.



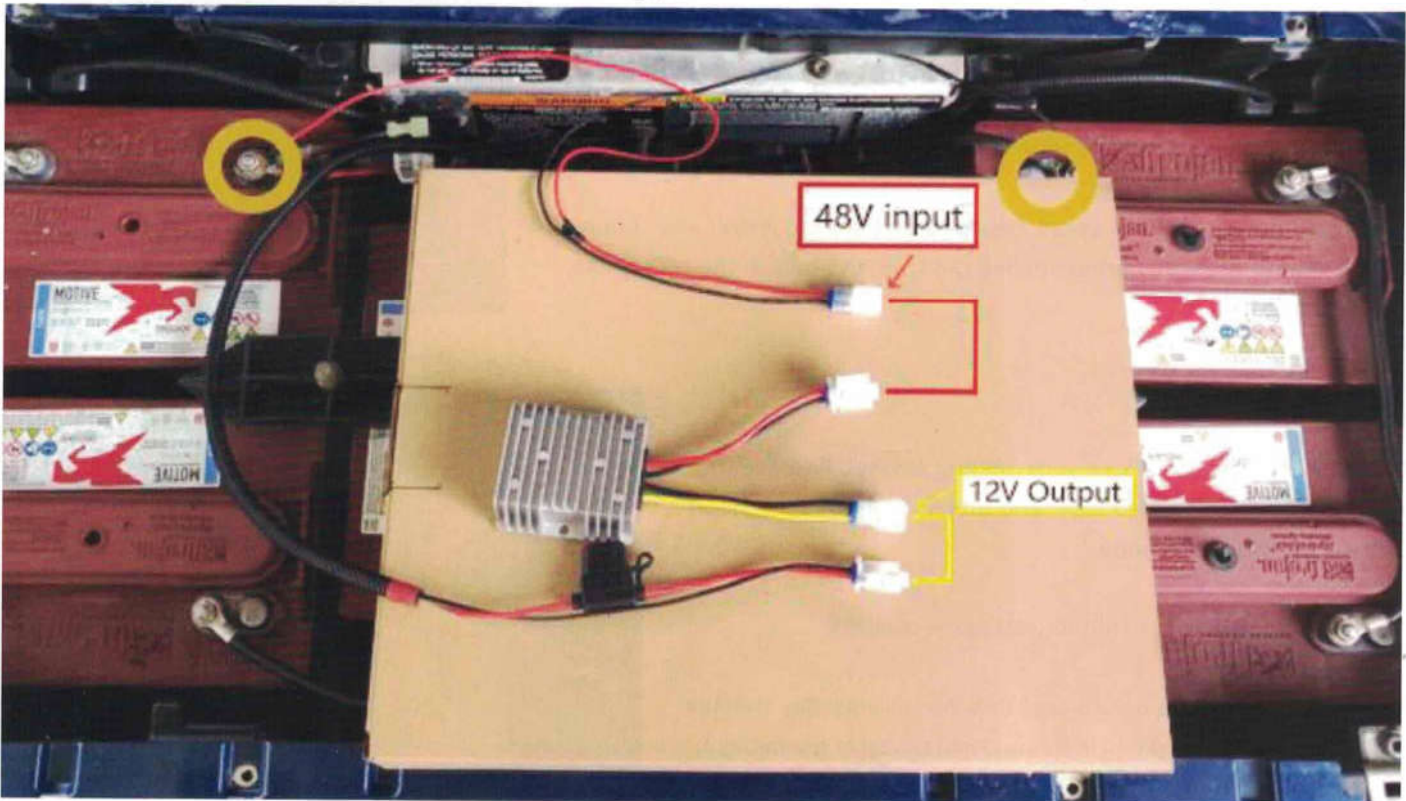
4-2.

Install the headlight bumper using the Original Bumper Mounting Hardware.

Connect the 6-pin connector of the headlight power output cable to the 6-pin connector of the headlight.



About battery connection



1. As shown in the figure above, the red and black wires with the ring terminals are connected to the battery pack's 48V output positive and negative terminals.
2. The 48V input is connected to the red and black wires of the step-down.
3. The 12V output of the step-down is connected to the red and black wire inputs of the barrel wire harness

Note: Excessive voltage will make the headlights brighter, causing lamp beads or components to burn out or shorten the life span. you need to buy a special 4V 36V to 12V vehicle device, 48V or 36V battery string voltage down to 12V, this headlight kit can only be used under 12V voltage.

Drawing power from only one or two cells will cause that cell to be out of balance with the rest of the pack. That battery can be chronically undercharged, while the rest can be overcharged, causing damage to the entire battery pack.

E-Z-GO®, TXT® and RXV® are registered trademarks of Textron Innovations, Inc. Club Car®, Precedent®, DS®, Onward® and Tempo® are registered trademarks of Ingersoll Rand, Inc. Yamaha®, Yamaha® Drive®, Drive2®, G-14®, G-16®, G-19®, G-22® and G-29® are registered trademarks of Yamaha Golf-Car Company. Any reference to Club Car®, E-ZGO®, or Yamaha® or their associated trademarks, word marks, and products are only for purposes of identifying golf carts with which this product is compatible. This product is an after-sales part and not an original equipment part. is not connected to, affiliated with, sponsored by, or endorsed by either Textron Innovations, Inc., Ingersoll Rand, Inc., Yamaha Golf Cart Company, or any of their parent or subsidiary companies.