



TITAN 1000 REAR SEAT

(E-Z-GO® RXV®)

ITEMS INCLUDED

- Hardware Packs 1-8
- Grab Bar
- Armrests
- Footrest
- Main Frame
- Main Brackets
- Bagwell Brackets
- Main Bracket Support
- Bagwell Support Bracket

TOOLS NEEDED

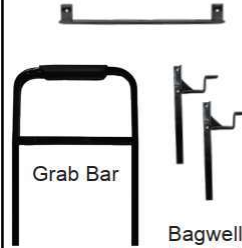
- Drill
- 17mm Socket
- 17mm Wrench
- 14mm Socket
- 10mm Socket
- #3 Phillips Bit
- 13mm Wrench

NOT REQUIRED when using seat cushions supplied with this seat kit



Use this bracket only when installing custom cushions such as TSUNAMI, or similar

Main Bracket Support



Grab Bar

Main Brackets



Armrests

Bagwell Brackets

Footrest



Main Frame

Bagwell Support Bracket

01-076 Bracket

WARNING:

We recommend professional installation. If you choose not to have this product installed by a professional, we highly recommend that you exercise caution, care, and patience when installing this product as it involves drilling holes into your cart's body.

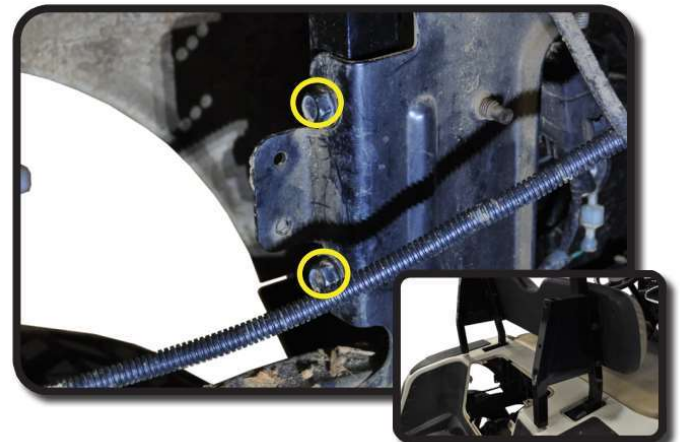
STEP 1

Remove factory canopy, rear struts, seat back and motor cover. Retain hardware.



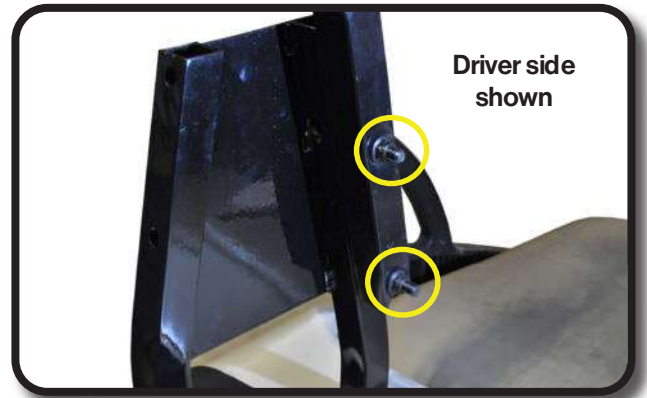
STEP 2

Attach main brackets as shown on both sides using hardware retained from Step 1.



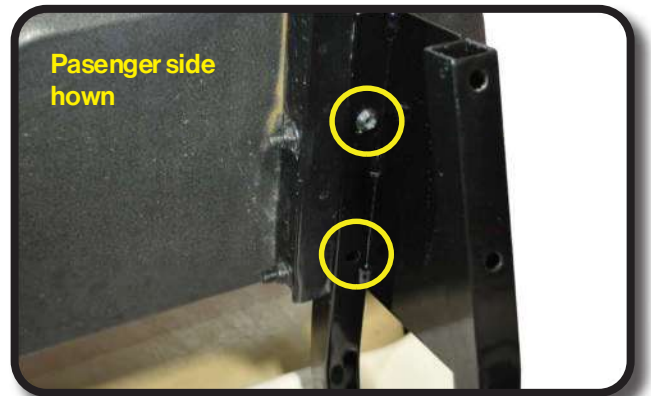
STEP 3

Attach factory struts to seat bracket as shown using hardware retained from Step 1.



STEP 4

Attach seat back to rear struts using hardware retained from Step 1.



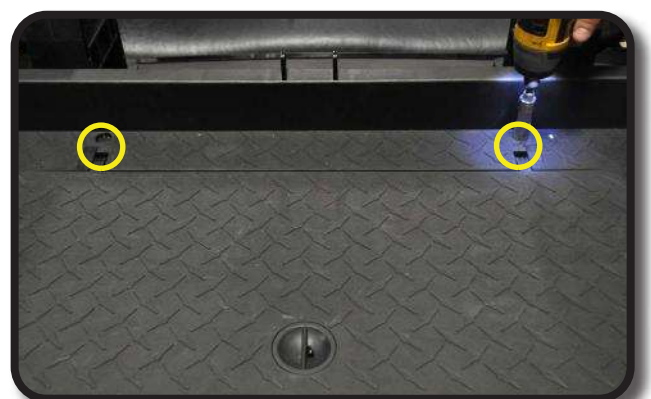
STEP 5

Attach support bracket to main seat bracket as shown using hardware from Pack 1.



STEP 6

Attach main polyboard to support bracket using hardware from Pack 2.



STEP 7

Attach main polyboard frame to bagwell bracket using hardware in Pack 2.



STEP 8

Install 01-076 adapter plates to main brackets and install rear seat back rest cushions.



STEP 9

Bolt rear seat back cushion to previously installed brackets and adjust to preferred height.



STEP 10

Use countersunk #3 Phillip bolt to attach bagwell bracket to support bracket and tighten using hardware from Pack 5. *Must be done before next step.



STEP 11

Attach bagwell bracket to cart and support bracket using hardware from Pack 5. For middle hole in support bracket use 8mm hardware, the 2" washer goes underneath the cart.



STEP 12

Attach armrest to poly seat frame as shown using hardware from Pack 6.



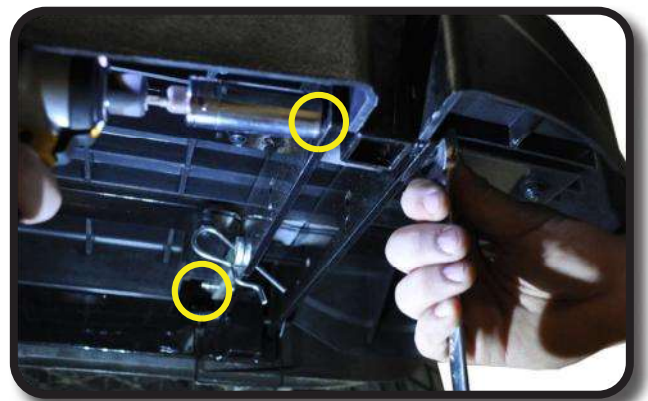
STEP 13

Attach footrest to bracket as shown using hardware from Pack 7.



STEP 14

Attach grab bar to footrest as shown using hardware from Pack 7.



STEP 15

Using quick release pins from hardware pack secure footrest to bagwell bracket as shown.



STEP 16

Attach seat bottom cushion as shown using hardware from Pack 8.



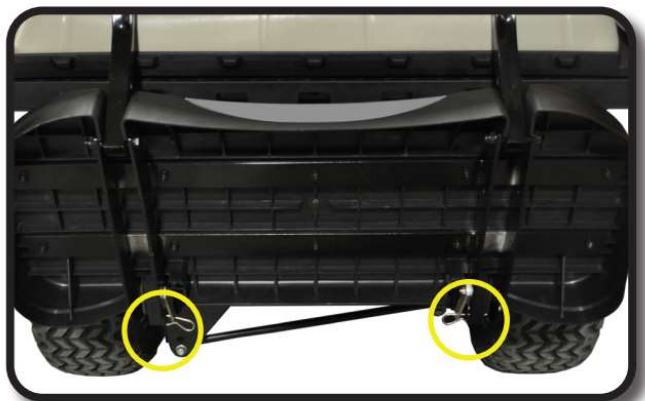
STEP 17

Reattach roof using hardware retained from Step 1.



STEP 18

Footplate can be folded up by removing the four c-clips and folding forward. To lock footplate in up right position use brackets as shown.



HARDWARE PACK

Pack 1

- 2 – 10x50mm hex bolt
- 4 – 10x20mm flat washer
- 2 – 10mm lock nut
- 4 – Rubber Washers

Pack 2

- 2 – 8x60mm hex bolt
- 4 – 8x15mm flat washer
- 2 – 8mm lock nut
- 6 – Rubber Washers
- 2 – 10x50mm Hex bolt
- 4 – 10x20mm flat washer
- 2 – 10mm locknut

Pack 3

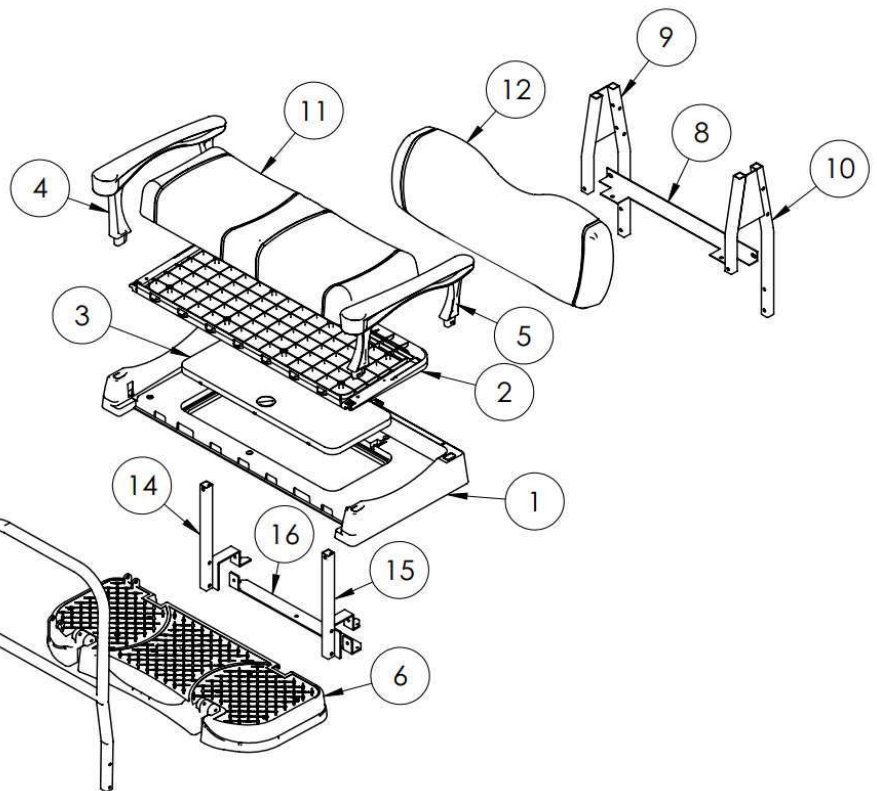
- 4 – 8x50mm countersunk #3 Phillips
- 4 – 8x15mm flat washer
- 4 – 8mm locknut

Pack 4

- 4 – 6x25mm hex bolt
- 4 – 6x15mm flat washer
- 4 – 6mm lock washer

Pack 5

- 2 – 6x50mm hex bolt
- 4 – 6x15mm flat washer
- 2 – 6mm locknut
- 8 – Rubber Washers
- 1 – 10x85mm Hex bolt
- 2 – 10x20mm flat washers
- 1 – 10mm lock nut
- 1 – 2"x2" square washer
- 2 – 8x25mm countersunk #3 Phillips
- 2 – 8x20mm flat washers
- 2 – 8mm locknut



Pack 6

- 4 – 8x30mm hex bolt
- 4 – 8x15mm flat washer

Pack 7

- 4 – 10x75mm hex bolt
- 8 – 10x20mm flat washer
- 4 – 10mm Locknut
- 4 – Quick release pins (easy remove hardware for folding in the foot plate)
- 8 – Rubber Washers