



## TITAN 1000 REAR SEAT

(will fit Club Car® DS®)

### ITEMS INCLUDED

- Hardware Packs 1-8
- Grab Bar
- Lean Back Brackets
- Back Bracket
- Armrest
- Footrest
- Main Frame

### TOOLS NEEDED

- Drill
- 17mm Socket
- 17mm Wrench
- 14mm Socket
- 10mm Socket
- #3 Phillips Bit
- 13mm wrench

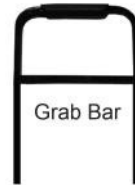
NOT REQUIRED when using seat cushions supplied with this kit



Use this bracket only when installing custom cushions such as TSUNAMI, or similar



Bagwell Bracket



Grab Bar



Armrests



Main Bracket



Footrest



Main Frame



Struts

## WARNING:

We recommend professional installation. If you choose not to have this product installed by a professional, we highly recommend that you exercise caution, care, and patience when installing this product as it involves drilling holes into your cart's body.

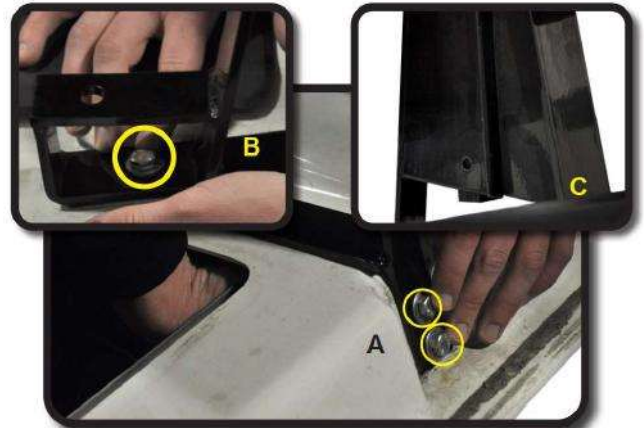
### STEP 1

Remove all rear accessories (if any), struts, bumper, motor cover, front seat and bracket. Retain canopy hardware and all front seat mounting hardware. Use brace to support canopy.



### STEP 2

- Attach main brackets to cart, above battery compartment with retained hardware.
- Using 8mm hardware from Pack 1 mount middle to cart as shown.
- Strut should be aligned to the inside of main bracket as shown.



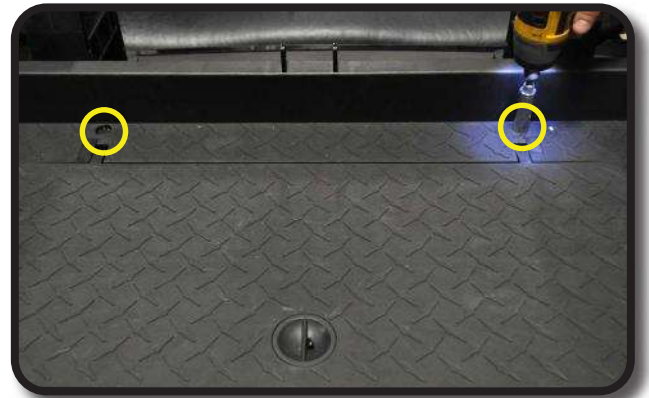
### STEP 3

Attach bagwell bracket to frame as shown using hardware from pack 2 and tighten.



### STEP 4

Attach main frame to main seat bracket using hardware from pack 2 and tighten.



### STEP 5

Attach bagwell bracket to polyboard seat frame as shown using hardware from pack 2. Repeat process on other side.



### STEP 6

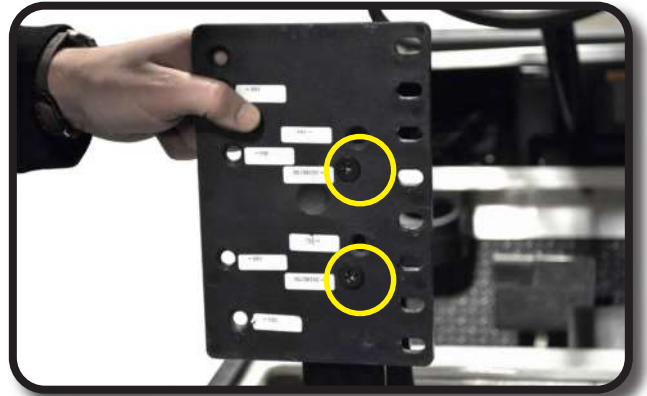
Attach arm rest to polyboard seat frame as shown using hardware from pack 3.



## STEP 7

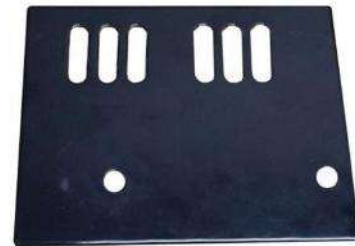
If using cushions supplied with this seat kit - Skip this step. Do not install brackets shown in picture.

If installing any custom seat cushions, attach the brackets shown here. Using the appropriate labeled hole for your cart, attach this bracket to main seat bracket using hardware from Pack 5.



## STEP 8

Bolt front back rest to main brackets. For Club Car Precedent and EZGO RXV, use 01-076 brackets supplied with your seat kit.



**01-076 BRACKET**

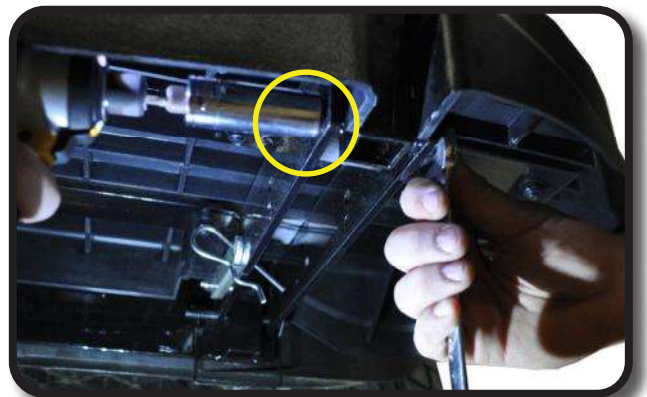
## STEP 9

Attach footrest to bagwell bracket as shown using 10mm hardware from Pack 6. Repeat process on the other side.



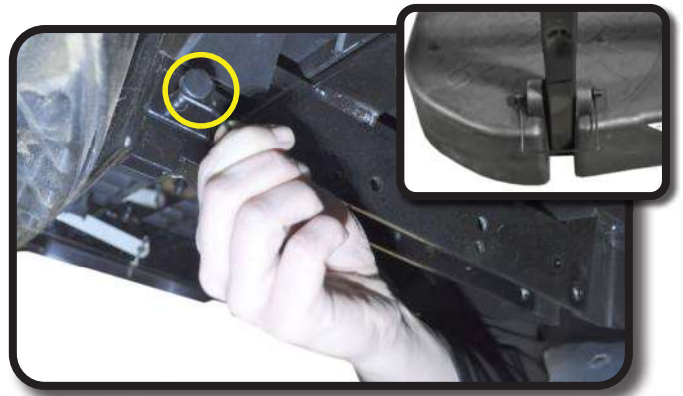
## STEP 10

Attach grab bar to footrest as shown using 10mm hardware from Pack 6.



## STEP 11

Using quick release clips from hardware Pack 6 Secure footplate to bagwell bracket and grab bar as shown.



## STEP 12

Attach seat bottom cushion as shown using hardware from Pack 7.



## STEP 13

Re-attach roof using hardware retained from Step 1 as shown. Attach struts to main bracket using hardware from Pack 8.



## STEP 14

Footplate can be folded up by removing the four quick release clips and folding forward. To lock footplate in up right position use brackets as shown.

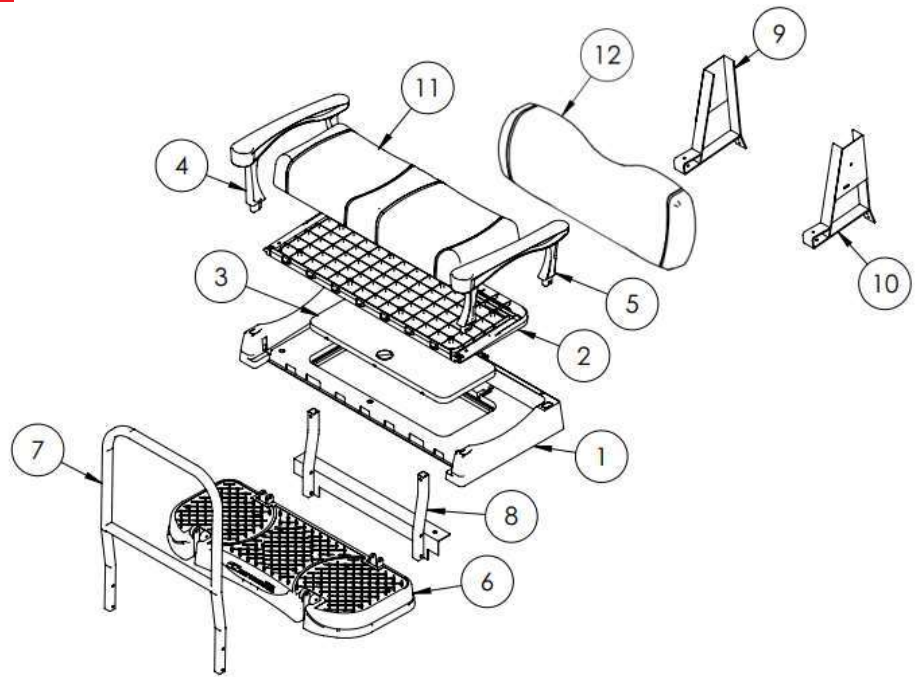


**INSTALLATION COMPLETE**

# GENESIS 300/250 REAR DELUXE SEAT FOR CLUB CAR DS

## WARRANTY PARTS EXPLODED VIEW DIAGRAM

### HARDWARE PACK



#### Pack 1

- 2 – 8x30mm hex bolt
- 4 – 8x17mm flat washer
- 2 – 8mm lock nut

#### Pack 2

- 2 – 8x60mm hex bolt
- 4 – 8x15mm flat washer
- 2 – 8mm lock nut
- 2 – 10x30mm hex bolt
- 8 – 10x20mm flat washer
- 4 – 10mm lock nut
- 2 – 10x50mm hex bolts
- 12 – Rubber washers

#### Pack 3

- 4 – 8x30mm hex bolt
- 4 – 8x15mm flat washer

#### Pack 4

- 4 – 8x30mm countersunk #3 Phillips
- 4 – 8x15mm flat washer
- 4 – 8mm locknut

#### Pack 5

- 4 – 6x25mm hex bolt
- 4 – 6x15mm flat washer
- 4 – 6mm lock washer

#### Pack 6

- 4 – 10x75mm hex bolt
- 8 – 10x20mm flat washer
- 4 – 10mm Locknut
- 4 – Quick release pins (easy remove hardware for folding in the foot plate)
- 8 – Rubber washers

#### Pack 7

- 8 – 8x40mm countersunk

#### Pack 8

- 4 – 8x45mm Hex bolt
- 8 – 8x17mm flat washer
- 4 – 8mm locknut

Club Car®, Club Car® Precedent®, and Club Car® DS® are registered trademarks of Ingersoll Rand, Inc. ("Ingersoll Rand"). Reference to Club Car®, Club Car® Precedent®, or Club Car® DS® or any of Ingersoll Rand's trademarks, word marks, or products is only for purposes of identifying golf carts. These products are aftermarket parts and not original equipment parts. Excalibur is not connected to, affiliated with, sponsored by, or endorsed by Ingersoll Rand or any of its subsidiary companies.