



6 INCH A-ARM LIFT KIT YAMAHA® DRIVE®

INSTALLATION INSTRUCTIONS

TOOLS NEEDED: (NOT SUPPLIED)

10MM SOCKET
14MM SOCKET
17MM SOCKET
19MM SOCKET
14MM WRENCH
17MM WRENCH
11/16 WRENCH
3/8 ALLEN WRENCH
7/16 DRILL BIT



Main Suspension Assembly



U-Bolts



A-Arms



Sway Bar Bracket



Shocks



Rear Bracket



Spindles

WARNING: After installing this lift kit, the front wheels must be properly aligned. Failure to properly align the front wheels may result in decreased ability to control the Golf Cart which may result in rollover or crash.

WARNING

< To reduce risk of accidents and injury or death >

Be Prepared

- Wear seat belt, motorcycle helmet, eye protection and protective gear.
- Keep your body completely inside the vehicle at all times. Keep both hands on the steering wheel. Be sure passenger is seated, belted, and holding on to the handholds.

Be Qualified and Responsible

- This vehicle is intended for use only by an operator 16 or older with a valid motor vehicle license.
- Passenger and driver must be able to place both feet flat on the floorboard while seated upright with their backs against the seat backs.

Avoid Rollovers and Crushing Injuries

- Use care when turning:
 - Turning the steering wheel too far or too fast can result in a rollover or loss of control.
 - Slow down before entering a turn.
 - When making tight turns from a stop, or at slow speeds, avoid sudden or hard acceleration.
 - Avoid sideways sliding, skidding, or fishtailing, and never do donuts.
- Drive straight up and down inclines, not across them. If crossing a hill is unavoidable, drive slowly and turn downhill immediately if you feel the vehicle may tip.

Abrupt maneuvers or aggressive driving have caused rollovers, even on flat, open areas.



STEP 1

Engage parking brake and switch cart to "OFF". Also, make sure TOW/RUN switch is in TOW position. Raise cart with jack, and support with jack stands under the frame. Remove front bumper and retain hardware.



STEP 2

Using 19mm socket, remove front wheels, remove dust cover, cotter pin, and hub. Retain hardware.



STEP 3

Using a 17mm socket and 11/16 wrench, disconnect steering linkage by removing cotter pin and castle nut. Separate ball joint from spindle. Retain hardware.



STEP 4

Using 14mm wrench and socket, Remove bolts from control arm assemblies. Retain hardware.



STEP 5

Using 14mm wrench and socket remove upper bolts from shocks to remove control arm assembly. Retain hardware.



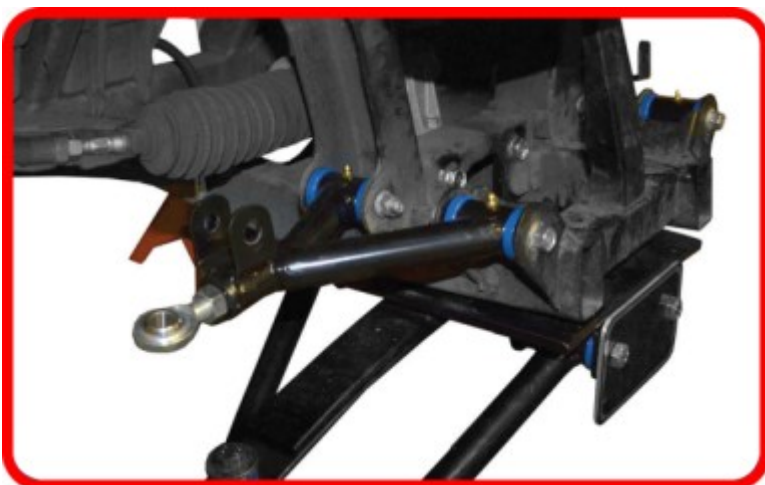
STEP 6

To attach main suspension assembly, install supplied u-bolt on rear of assembly. **DO NOT TIGHTEN.**



STEP 7

Using provided hardware, attach assembly to frame as shown. Tighten all bolts and u-bolts using 17mm socket.

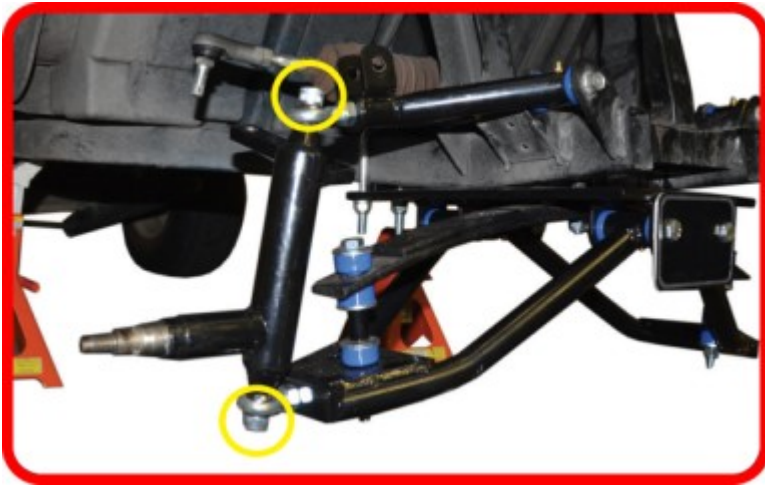


STEP 8

Attach upper A-arms using the 14mm socket and hardware retained from STEP 5.

IMPORTANT: Ensure the angled portion of the A-arm is facing towards the front of the cart. See image for reference.

NOTE: Grease all fittings before proceeding

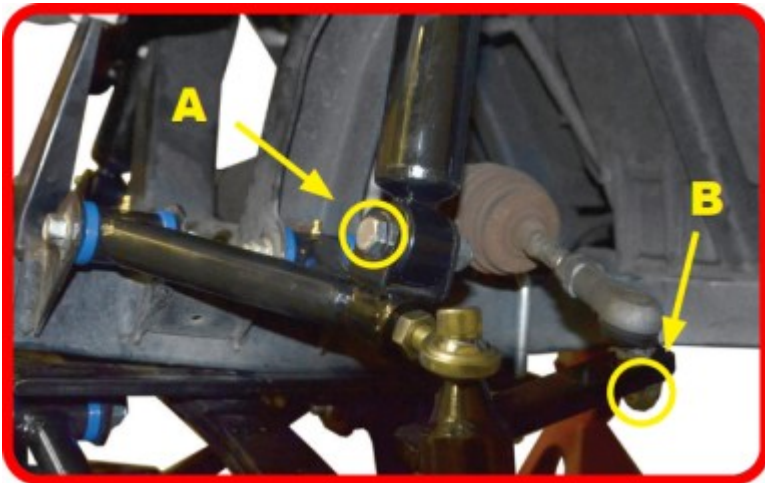


STEP 9

NOTE: Before attaching spindles, adjust heim joints so there is approximately 1/4" of thread showing.

Attach spindles to main suspension assembly and upper A-Arms using supplied allen head cap screws.

***Do not use thread locking adhesive until alignment is complete at the end of installation.**



STEP 10

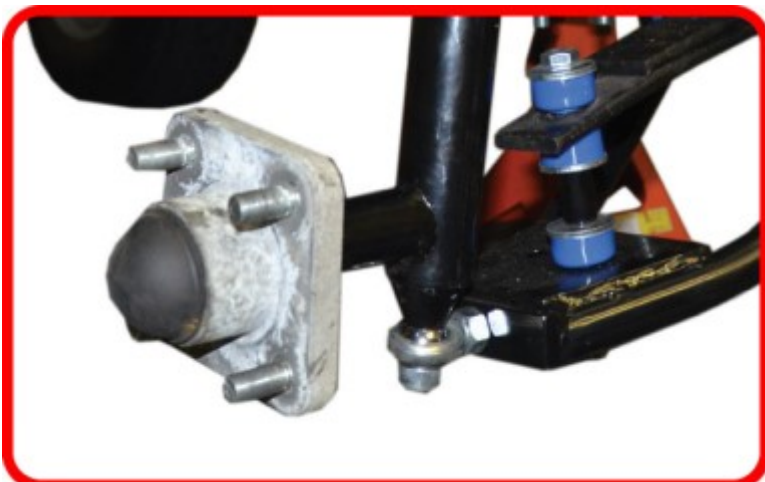
A) Using 14mm socket and wrench, attach supplied shock to upper A-arm.

B) Attach steering linkage to new spindle as shown.



STEP 11

Using 14mm socket and wrench, attach new shock to cart shock mount using retained hardware from STEP 5.



STEP 12

Attach hub and dust cover using retained hardware. Install wheels and re-attach bumper.



STEP 13

Chock front wheels. Lift cart and place on jack stands to secure cart. Leave jack in place to assist with reassembly. Using 19mm socket, remove rear wheels.



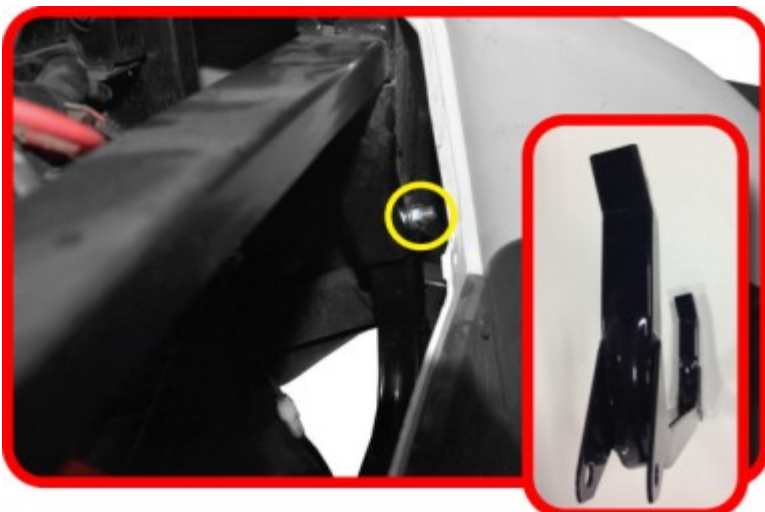
STEP 14

Remove motor cover and retain.



STEP 15

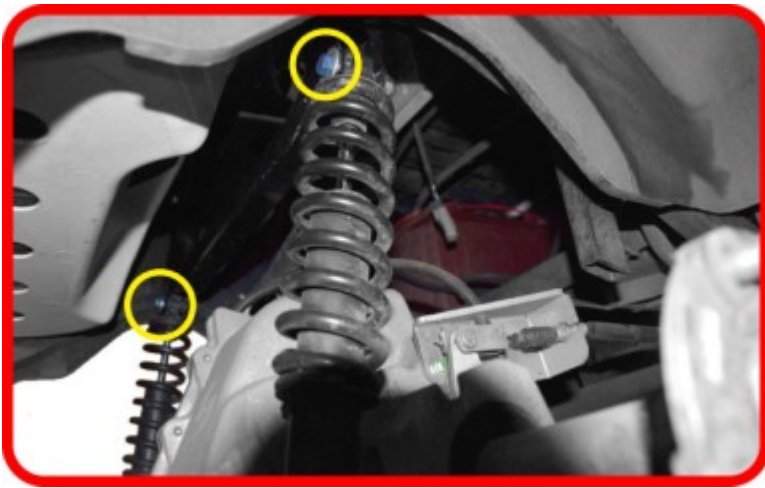
Using 14mm socket and wrench, remove upper bolt from rear shocks on both sides. Retain hardware.



STEP 16

Use 14mm socket and wrench to attach rear mounting bracket with retained hardware from STEP 15.

IMPORTANT: Be sure the ends of the bracket are angled towards the front of the cart. See image.



STEP 17

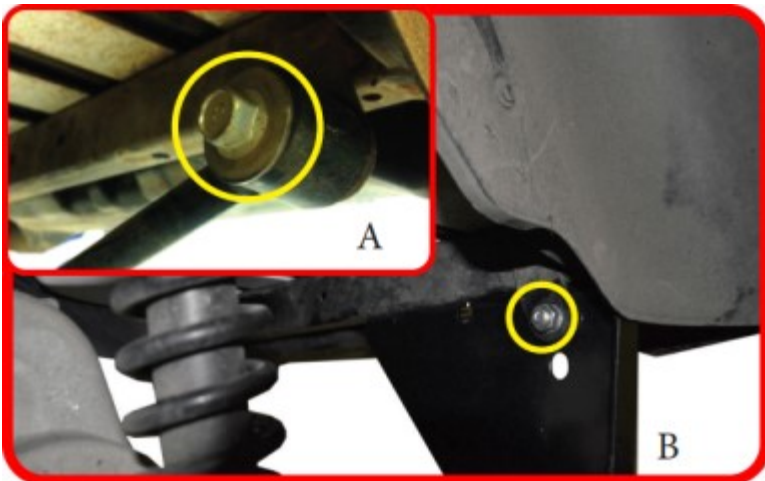
Using 17mm socket and wrench, attach upper portion of rear shock to rear mounting bracket using supplied hardware and tighten.



STEP 18

Use 10mm socket to remove bolt from bagwell. Drill 7/16 hole through the bagwell in the location shown.

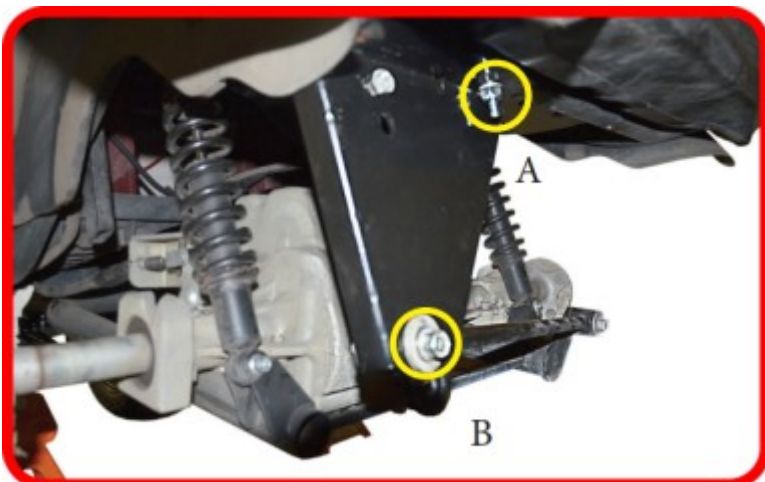
IMPORTANT: Be sure to drill straight down through entire frame.



STEP 19

A) Using 17mm wrench and socket, remove factory bolt at sway bar.

B) Now attach new sway bar bracket using 10x25mm hardware provided. Do not tighten.



STEP 20

A) Using supplied 10x90mm bolt, insert through 7/16 hole drilled in bagwell and secure new sway bar bracket.

B) Attach sway bar to new bracket as shown using retained hardware and 17mm socket and wrench. Tighten all hardware.



STEP 21

Side skirt must be trimmed to accept larger wheels and tires. See image.

ALIGNMENT INSTRUCTIONS

WARNING:

After installing this lift kit, the front wheels must be properly aligned. Failure to properly align the front wheels may result in decreased ability to control the Golf Cart which may result in a rollover or crash.

IMPORTANT: Both Camber and Toe must be adjusted on this model.

To adjust for proper camber, use a framing square, level, or some other means of verifying that the tire is at a 90 degree angle to the ground.

Adjust camber using the two nuts on the bottom of the heim joint (B).

If adjusting the camber to 90 degrees is not possible using only the adjustment on the bottom heim joint, then the top heim joint (A) must be disconnected from the spindle and rotated as necessary to achieve the correct camber.

IMPORTANT: Exposed tie rod threading should be equal on both tie rods. Be sure to re-tighten all adjustment points after adjustments are made.

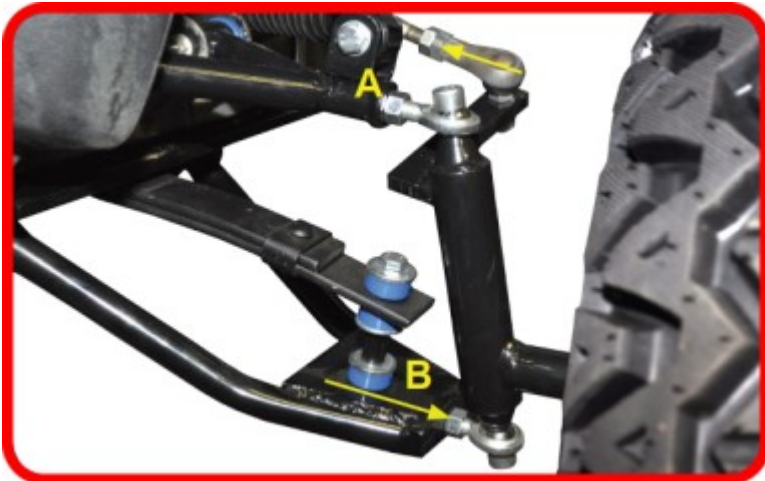
*** Use thread locking adhesive on heim joints once desired camber is achieved.**

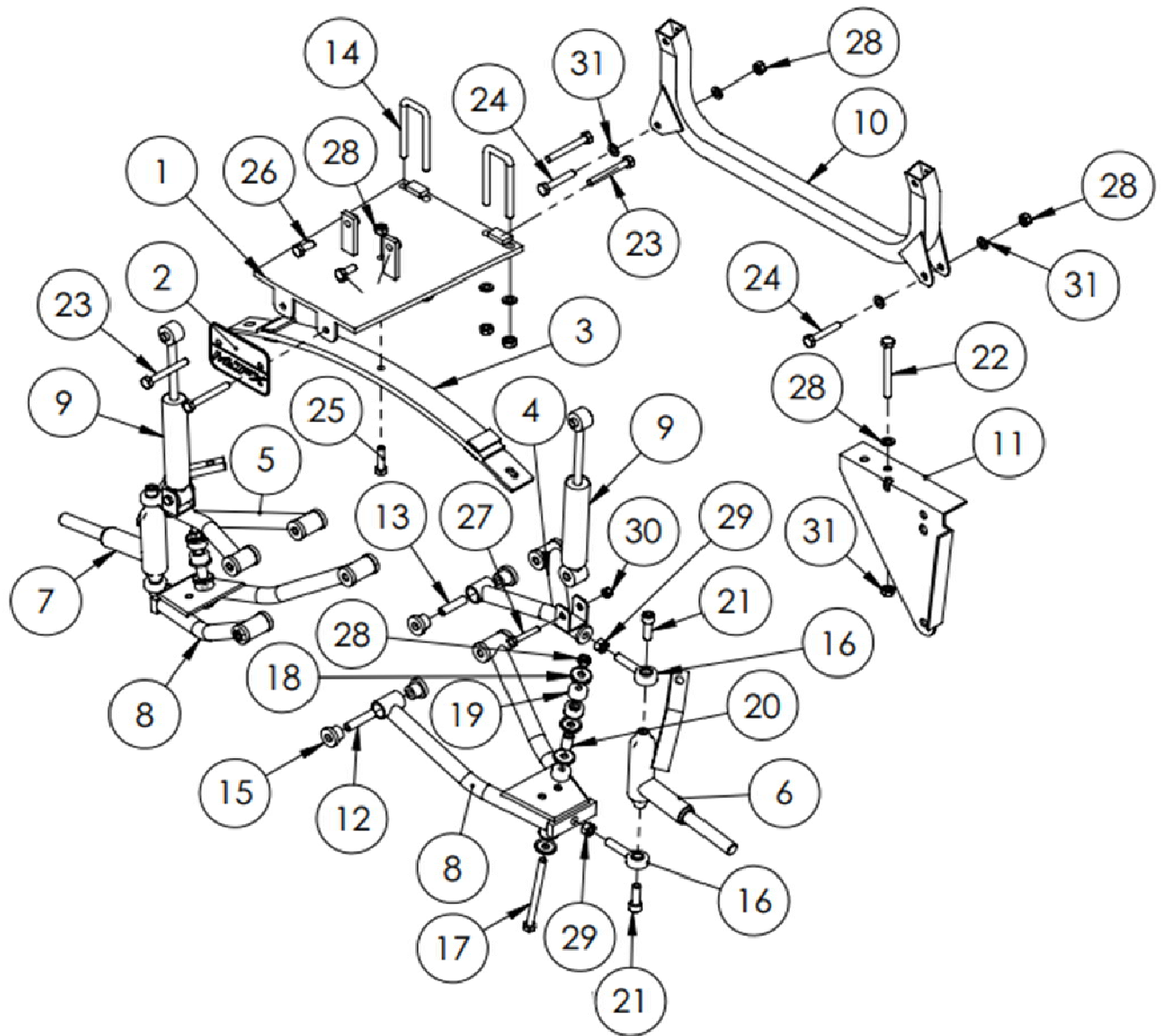
Ensure the wheels are pointing straight forward. To adjust toe, find a common point to measure from on the inside front and inside rear of the front tires. Adjust until the front measurement is 1/4" to 3/8" greater than the rear measurement.

Loosen nut on tie rod end (A) and adjust using a wrench. Tighten nut on rod end when complete.

IMPORTANT: Ensure that after this adjustment, both wheels toe out from the carts centerline equally.

Once tightened, roll the cart back 5-20 feet and then forward again to check.





ITEM NO.	PART NO.	DESCRIPTION	QTY
1	W16-16-1	Drive Front Main Bracket	1
2	W16-5-3	Drive Logo Plate	1
3	W16-5-4	Drive Front Leaf Spring	1
4	W16-5-5	Drive Upper A-Arm (Left)	1
5	W16-5-6	Drive Upper A-Arm (Right)	1
6	W16-16-2	Drive Front Spindle 6.0 (Left)	1
7	W16-16-3	Drive Front Spindle 6.0 (Right)	1
8	W16-5-9	Drive Lower Control Arm	2
9	W16-5-10	Drive Shock	2
10	W16-5-11	Drive Rear Upper Suspension Mounting Bracket	1
11	W16-5-12	Rear Swaybar Mounting Bracket	1
12	W16-8-6	55mm Bolt Sleeve	4
13	W16-8-9	48.5mm Bolt Sleeve	4
14	W16-5-13	U-Bolt 58.5mm x 110mm	2
15	W16-8-1	Upper A-Arm/Lower Control Arm Bushing	16
16	W16-8-3	Heim Joint	4

ITEM NO.	PART NO.	DESCRIPTION	QTY
	W16-8-11	Front Leaf Spring Bolt Assy 6.0	2
17		M10x140 Hex Head Bolt	1
18		Bushing Cap	4
19		Bushing	4
20		25mm Bolt Sleeve	1
28		M10 Locking Nut	1
	W16-5-1	Drive Lift Kit Hardware Pack	1
21	W16-8-13	M12x35 Hex Socket Cap Bolt	4
22		M10x100 Hex Head Bolt	1
23		M10x80 Hex Head Bolt	4
24		M10x60 Hex Head Bolt	2
25		M10x40 Hex Head Bolt	2
26		M10x25 Hex Head Bolt	2
27		M8x50 Hex Head Bolt	1
28		M10 Locking Nut	7
29		M12 Nut	6
30		M8 Locking Nut	1
31		M10x20 Flat Washer	5