

 BIOCLEAR

ANTERIOR
MATRIX



INSTRUCTIONS

GETTING STARTED

Bioclear Matrix is the only completely clear anatomic sectional matrix on the market. It, along with the other Bioclear products, will produce the smoothest embrasures and strongest contacts compared to other matrix systems. The high quality restorations created with the Bioclear Matrix are raising the bar for anterior composites.

Please thoroughly read the instructions and product care guide before use.

MATRIX SELECTION



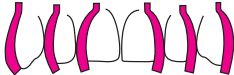







The Bioclear Matrices are anatomic and tooth specific. Use this guide to help select the appropriate matrix. Make sure to confirm that the selected matrix has the correct amount of gingival curvature. If the selected matrix has too much gingival curvature, the restoration will not have an ideal final shape.

KEYS TO SUCCESS









- Select correct matrix
- Use TruContact sanders to optimize the contact
- Check for proper matrix orientation
- Trim matrix for papilla height
- Seat deep into sulcus



STANDARD ANTERIOR MATRICES

	A101		Upper Mesial	Intended for mesial of upper incisors. Has straight incisal. Small Space Closure < .5mm
	A102		Upper Distal	Intended for distal of upper incisors. Has curved incisal. Small Space Closure < .5mm
	A103		Small Incisor Universal	Intended for all lower incisors and small lateral incisors. Small Space Closure < .5mm
	A104		Canine Mesial	Intended for canines. Has straight incisal. Small Space Closure < .3mm
	A105		Canine Distal	Intended for canines. Has curved incisal. Small Space Closure < .5mm

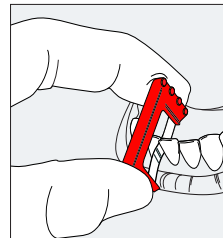
DIASTEMA MATRICES

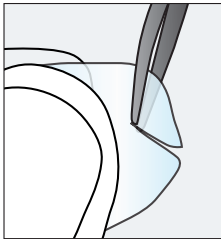
	DC201		Upper Mesial	For mesial diastema closure up to 1mm.
	DC202		Upper Distal	For distal diastema closure up to 1mm.
	DC203		Small Incisor	For space closure on lower incisors up to 1mm.
	DC204		Extra Large Diastema Closure Mesial	For diastema closure on spaces larger than 2mm.

TRUE CONTACT

Use the TruContact sander before matrix placement to lighten the contact between teeth where the matrix is to be placed.

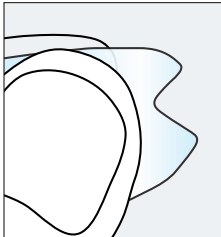
- If you are placing the matrix on one tooth surface, use the **orange** sander.
- If you are placing two matrices in one contact, use the **red** sander.
- Use the **blue** saw after curing the composite to clean up any unwanted materials in the interproximal area to avoid “false contact.”





TRIMMING THE MATRIX

In young patients with healthy bone, a notch will need to be trimmed from the gingival edge of the matrix. The notch height will correlate with the papilla height. Use Bioclear Matrix Sculpting Scissors (ID# 500071) to trim papilla notch.



PAPILLA HEIGHT TRIMMING CHART

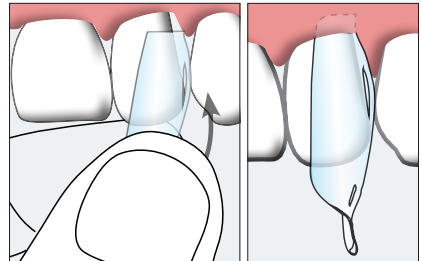
High papilla		
Medium papilla		
Low papilla (black triangles)		

Gingival
Trimming Area



PLACING THE MATRIX

Pinch the matrix between your thumb and index finger to drive the matrix apically deep into the sulcus. If the matrix will not slide into place, remove the matrix and re-sand the contact area with the TruContact sander.



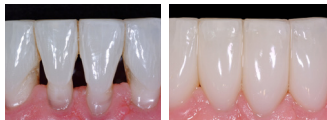
BIOCLEAR LEARNING

The Bioclear Learning Center provides a new pathway for dentists and their practice to transition from traditional GV Black dentistry, to the extraordinary world of modern composite dentistry. Delivering consistent, high-quality results, the Bioclear Method for composite dentistry, created by Dr. David Clark, offers unparalleled innovations in both practice and patient comfort.

The Core Anterior courses at the Learning Center include instruction in the use of the Bioclear matrices with the minimally invasive injection molding composite technique (using heated composite materials) and the mirror finish polishing technique.

These techniques allow doctors to treat (amongst other problems):

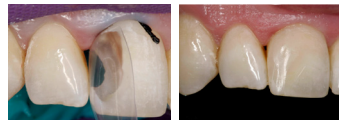
BLACK TRIANGLES



PEG LATERALS



DEEP CARRIES



Classes also cover the tools needed as well as the methods and best practices to obtain a strong and aesthetically pleasing result. Small class sizes with plenty of individual attention allows attendees to leave the class with the confidence and experience to treat many of the most common dental problems. Learning courses may be counted for continuing education credit.



Course list, schedule, and registration available on our website.

BIOCLEARMATRIX.COM