

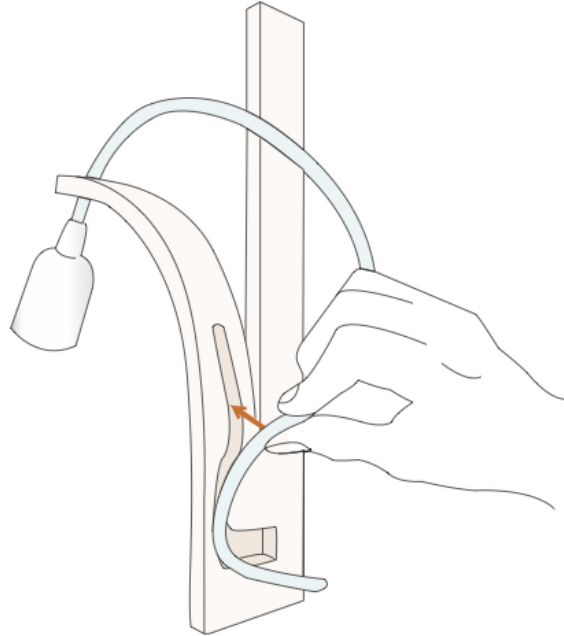
YOUR WALL LIGHTS

HARDWIRED

We recommend a qualified electrician fit these lights.

Connect bare end of cable to mains using a junction box.

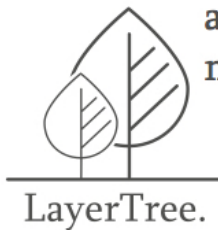
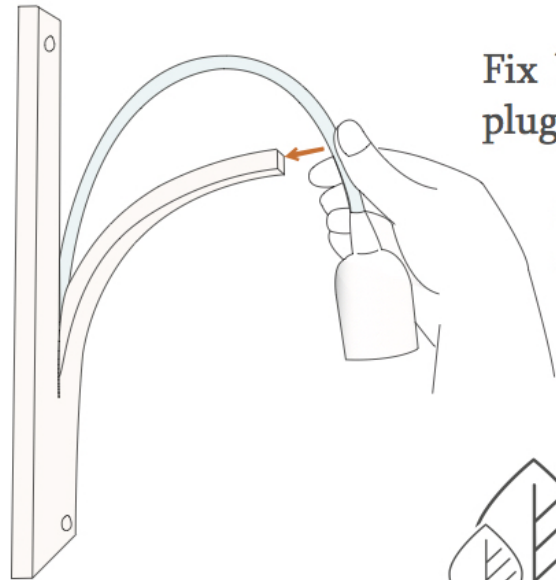
Locate cable into groove on reverse of bracket, allowing enough cable to create a loop above the bulb holder.



Fix bracket to wall using wall plugs and screws provided.

Secure cable by firmly twisting into wedge.

Ensure you hold cable gland when inserting and removing bulbs. Do not overtighten.



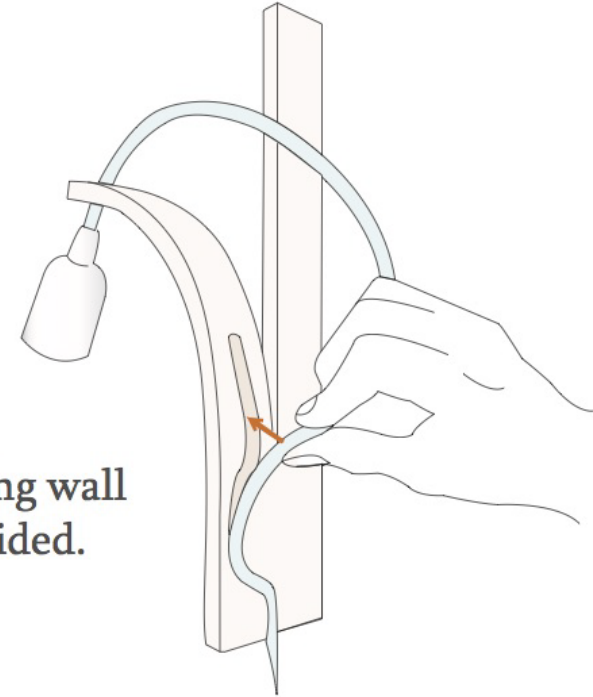
LayerTree.

YOUR WALL LIGHTS

PLUG IN

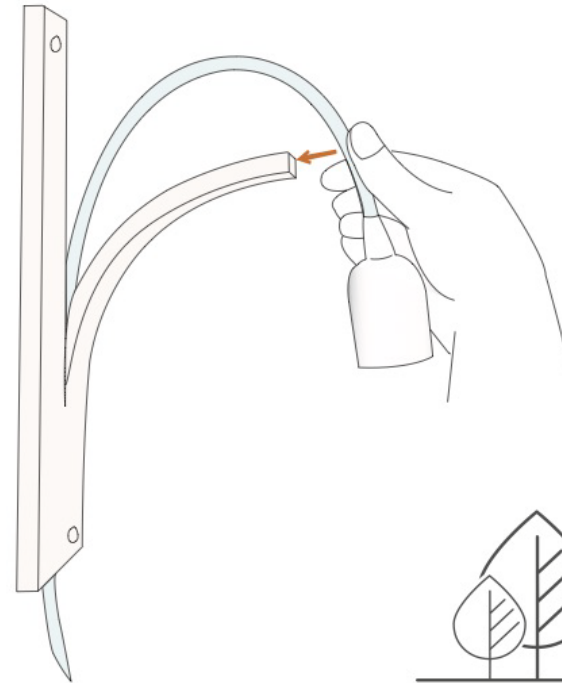
Locate cable into groove on reverse of bracket, allowing enough cable to create a loop above the bulb holder.

Fix bracket to wall using wall plugs and screws provided.



Secure cable by firmly twisting into wedge.

Ensure you hold cable gland when inserting and removing bulbs. Do not overtighten.



LayerTree.