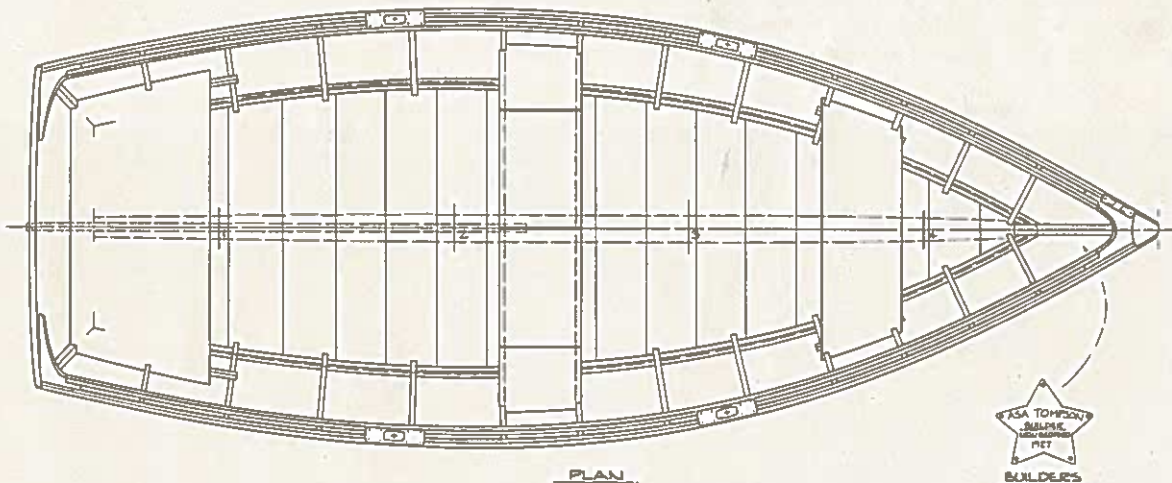
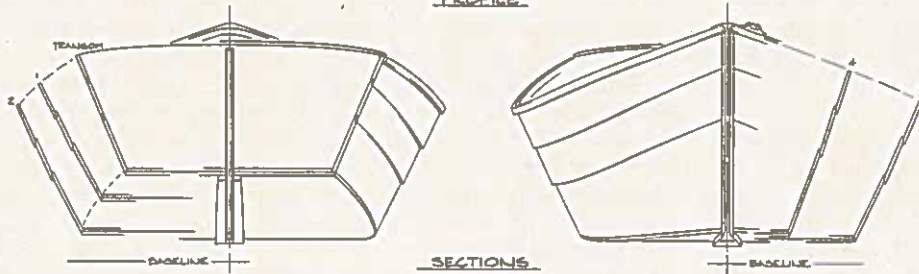
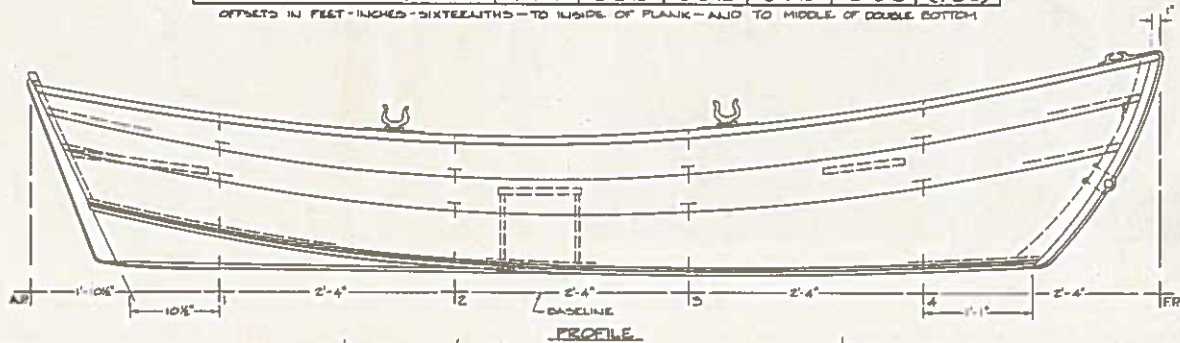


**ASA THOMPSON SKIFF**  
 BUILT 1927 NEW BEDFORD, MASS.      LENGTH 11'-3"      BEAM 4'-8"

TABLE OF OFFSETS		TRANSOM	1	2	3	4	STEM
HEIGHTS FROM BASELINE	SHEER	2-0-12	1-9-3	1-6-12	1-7-8	1-11-0	2-4-14
	BOTTOM	0-10-11	0-7-8	0-8-14	0-3-0	0-3-8	0-4-0
HALF-BREADTHS	SHEER	1-6-6	1-10-7	2-1-1	1-10-16	1-2-3	(0-0-5)
	BOTTOM	1-0-1	1-3-0	1-5-6	1-3-3	0-7-2	(0-0-3)
PLANK WIDTHS	SHEER	0-3-14	0-4-4	0-5-0	0-5-4	0-5-4	(0-3-0)
	MIDDLE	0-5-10	0-4-11	0-4-15	0-5-6	0-6-2	(0-6-0)
	GARBOARD	0-7-11	0-6-10	0-6-12	0-7-10	0-10-0	(1-0-0)

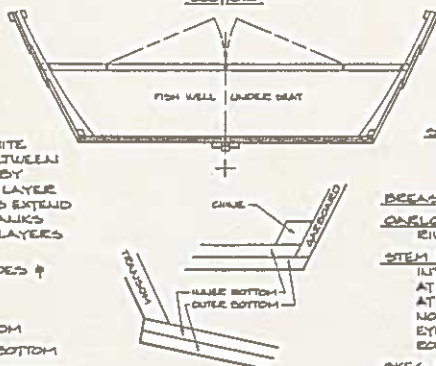
OFFSETS IN FEET-INCHES-SIXTEENTHS—TO INSIDE OF PLANK—AND TO MIDDLE OF DOUBLE BOTTOM



**SCANTLINGS:**

- FRAMES**—OAK, SIDED  $\frac{1}{2}$ " & MOULDED AS PER CONST. SECTION—NOTCHED OVER CHINES & PLANK LAPS
- SIDES**— $\frac{3}{8}$ " WHITE PINE, 3 STRAKES PER SIDE, LAPPED  $\frac{3}{4}$ "- $\frac{1}{8}$ " AND FASTENED WITH GALV. HEADED COPPER CLOUT NAILS (5 BETWEEN EACH FRAME)
- BOTTOM**—DOUBLE PLANKED WITH  $\frac{3}{8}$ " WHITE PINE, LAYER OF MUSLIN IN PAINT BETWEEN PLANK LAYERS—GARBOARDED LAPS BY INNER PLANK LAYER, OUTER PLANK LAYER EXTENDED BY GARBOARD, BOTH LAYERS EXTEND BY TRANSOM, BOTH LAYERS HAVE PLANKS 6"-7" WIDE W/ SEAMS STAGGERED, LAYERS FASTENED W/ COPPER CLOUT NAILS
- TRANSOM**— $\frac{3}{8}$ " OAK W/  $\frac{1}{8}$ " CHEEKS & SIDES &  $\frac{3}{4}$ "- $\frac{1}{8}$ " CAP
- STEM**—2 PIECE OAK, SIDED 1 $\frac{1}{2}$ "
- CHINES**— $\frac{3}{8}$ " OAK, BEVELED TOP & BOTTOM
- STEERPOST**— $\frac{3}{8}$ " OAK, TAPEE FROM 2" @ BOTTOM
- KEEL PIECE**— $\frac{1}{2}$ "-3 $\frac{1}{2}$ " YELLOW BIRCH—KERFED TO LET IN SKEG BUT RUN CONTINUOUSLY UNDERNEATH IT
- SKEG**— $\frac{3}{8}$ " YELLOW BIRCH

**CONSTRUCTION SECTION**



- INWALE**— $\frac{1}{2}$ "- $\frac{3}{8}$ " BIRCH, SPACED  $\frac{3}{8}$ " OFF SHEERSTRAKE BY FRAME HEAD BUSHED THRU EACH FRAME TO GUNWALE
- GUNWALE**— $\frac{1}{2}$ "- $\frac{3}{8}$ " BIRCH, SCREWED FROM INSIDE BETWEEN EACH FRAME BEFORE INWALE IS PUT ON
- SEATS**— $\frac{3}{4}$ "-1 $\frac{1}{4}$ " OAK, FWD SEAT ON  $\frac{1}{2}$ "-1 $\frac{1}{2}$ " BEVELED RISER, MIDSHIPS SEAT HINGED OVER BOXED IN FISH WELL (NOTE—NO SEAT KNEES IN THIS CONSTRUCTION)

- BREASTHOOK & QUATER KNEES**—APPLE CROOKS
- ONLOCK PADS**—2"-7" BRONZE CASTINGS RIVETED TO INWALE & GUNWALE
- STEM BAND**—BRONZE HALF RD.—ENDS FORMED INTO CAPS TO LAP OVER STEM HEAD & BHOOK AT TOP AND OVER STEM HEEL & KEEL PIECE AT BOTTOM—NOTE TOWLING EYE IN HALF ROUND
- SKEG BAND—BZE HALF OVAL**
- ONED**—6'-0" LONG

**ASA THOMPSON SKIFF**  
 DESIGNED & BUILT BY ASA THOMPSON  
 NEW BEDFORD, MASS.—1927  
 FROM AN EXAMPLE IN THE HYDRO-  
 GRAPHIC SURVEY SMALL CRAFT COLLECTION  
 OFFSETS TAKEN BY D. PHALEN 1979  
 SCANTLINGS TAKEN BY M. DEAY 1979  
 DRAWN BY SPENCER LINCOLN  
 SCALE 1 $\frac{1}{2}$ "=1'-0"  
 MAY 1979  
 COPYRIGHT WOODBOAT PUBLICATIONS INC.  
 P.O. BOX 78 BUCKLIN, MASS. 01460