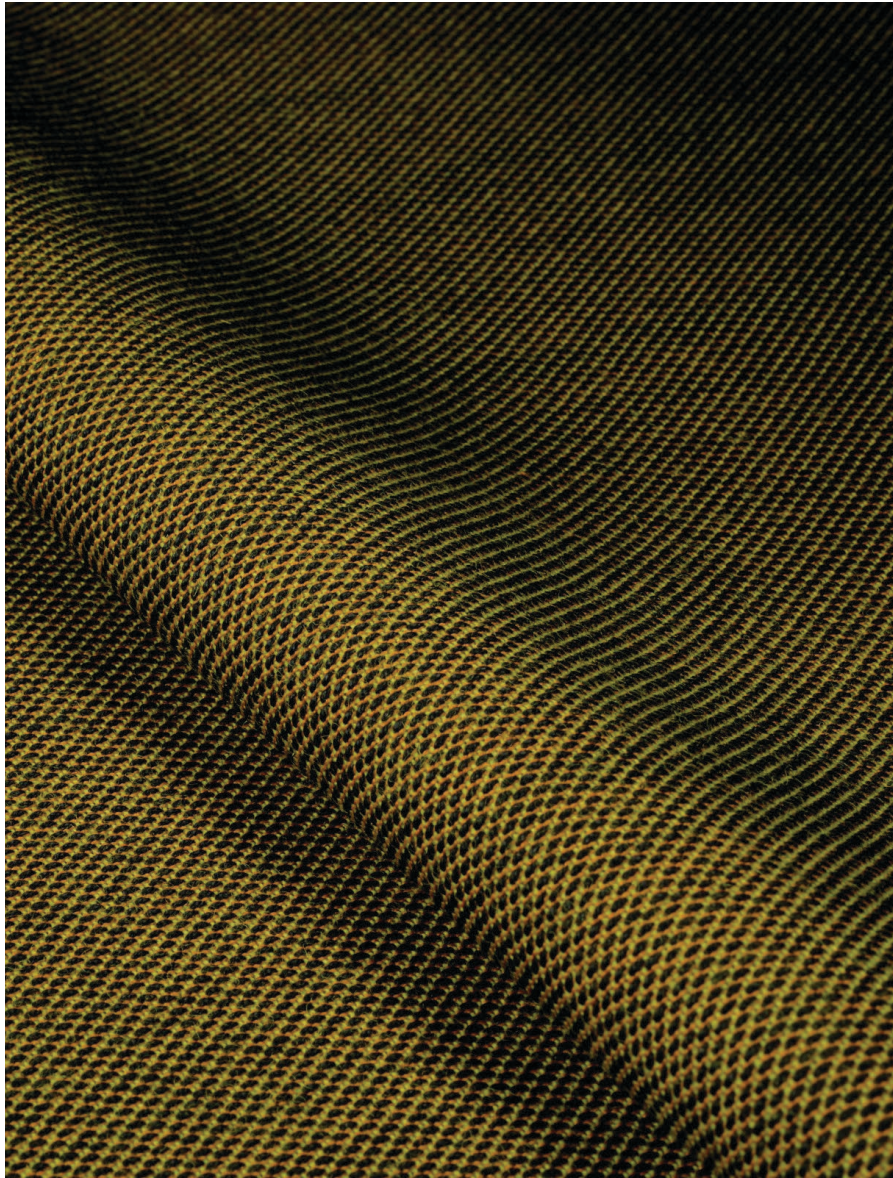


# Steelcut Trio 3

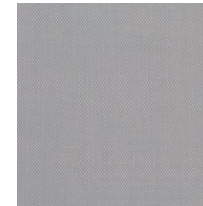
Price category 2  
Manufacturer Kvadrat  
Materials 90% New wool, 10% Nylon  
Martindale 100.000  
Lightfastness 5-7  
Pilling 4



# Steelcut Trio 3

Price category 2  
Manufacturer Kvadrat  
Materials 90% New wool, 10% Nylon  
Martindale 100.000  
Lightfastness 5-7  
Pilling 4

## TEXTILE



105



113



124



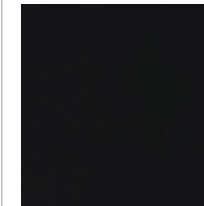
133



153



176



195



205



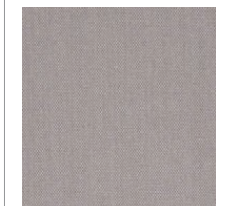
213



226



236



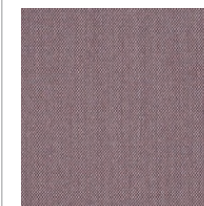
246



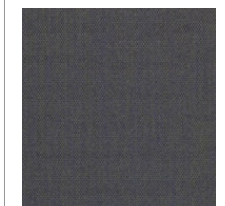
253



266



276



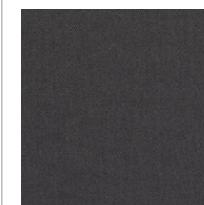
283



336



376



383



416

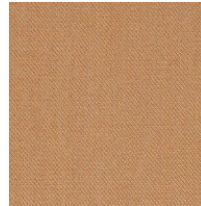
# Steelcut Trio 3

Price category 2  
Manufacturer Kvadrat  
Materials 90% New wool, 10% Nylon  
Martindale 100.000  
Lightfastness 5-7  
Pilling 4

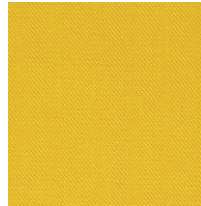
TEXTILE



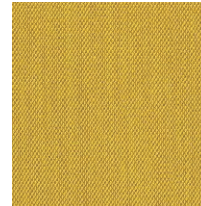
426



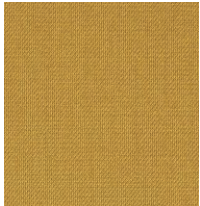
436



446



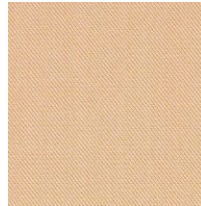
453



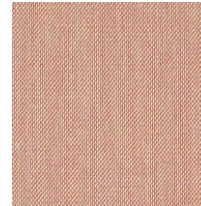
466



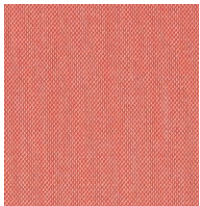
476



506



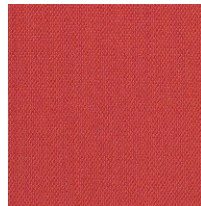
515



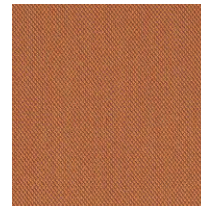
526



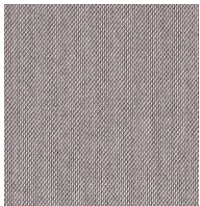
533



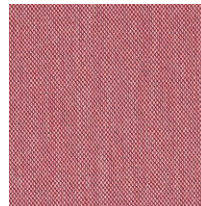
553



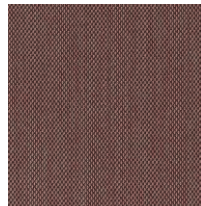
576



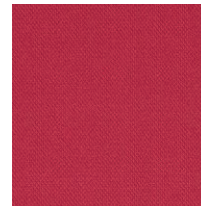
616



636



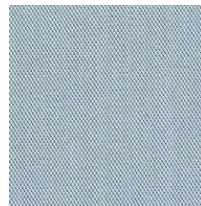
645



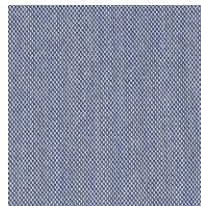
666



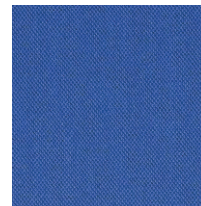
686



713



716



746

# Steelcut Trio 3

Price category 2  
Manufacturer Kvadrat  
Materials 90% New wool, 10% Nylon  
Martindale 100.000  
Lightfastness 5-7  
Pilling 4

TEXTILE



756



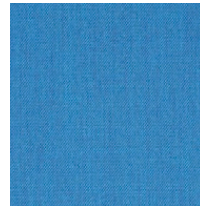
776



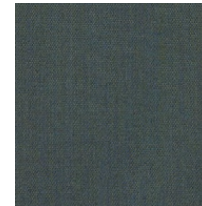
796



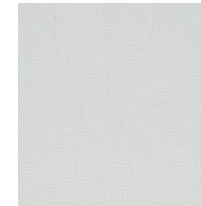
806



865



883



906



916



946



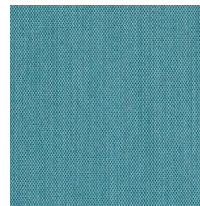
953



966



976



983



996