

# FABRIC OPTIONS

DE LA ESPADA

**RANGE**

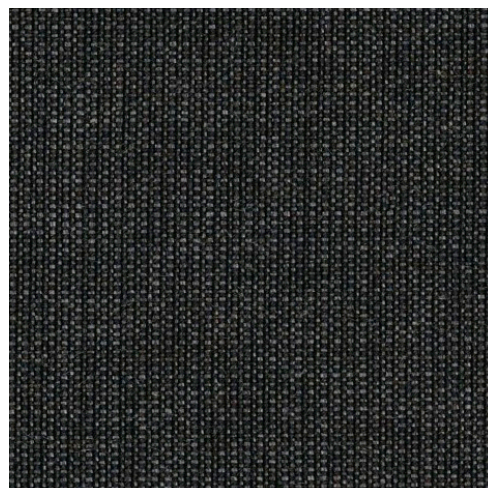
A

D

**CANVAS 2**

Canvas is a refined woollen textile designed by Giulio Ridolfo. Inspired by women's couture, it offers a great richness of colour, and is extremely hardwearing at 100,000 rubs Martindale.

90% NEW WOOL WORSTED/10% NYLON



CANVAS 2 174



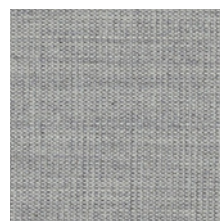
CANVAS 2 114



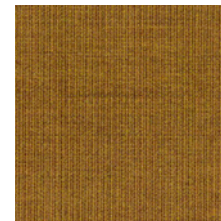
CANVAS 2 654



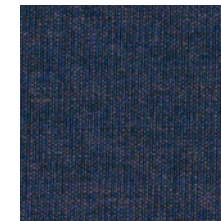
CANVAS 2 794



CANVAS 2 124



CANVAS 2 424



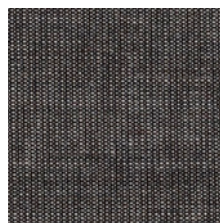
CANVAS 2 684



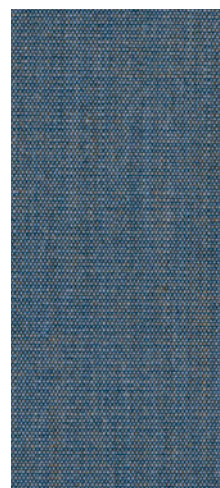
CANVAS 2 364



CANVAS 2 764



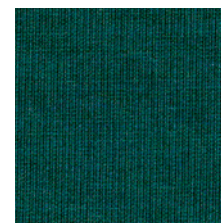
CANVAS 2 154



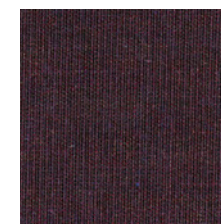
CANVAS 2 734



CANVAS 2 974



CANVAS 2 984



CANVAS 2 694



CANVAS 2 374

RANGE

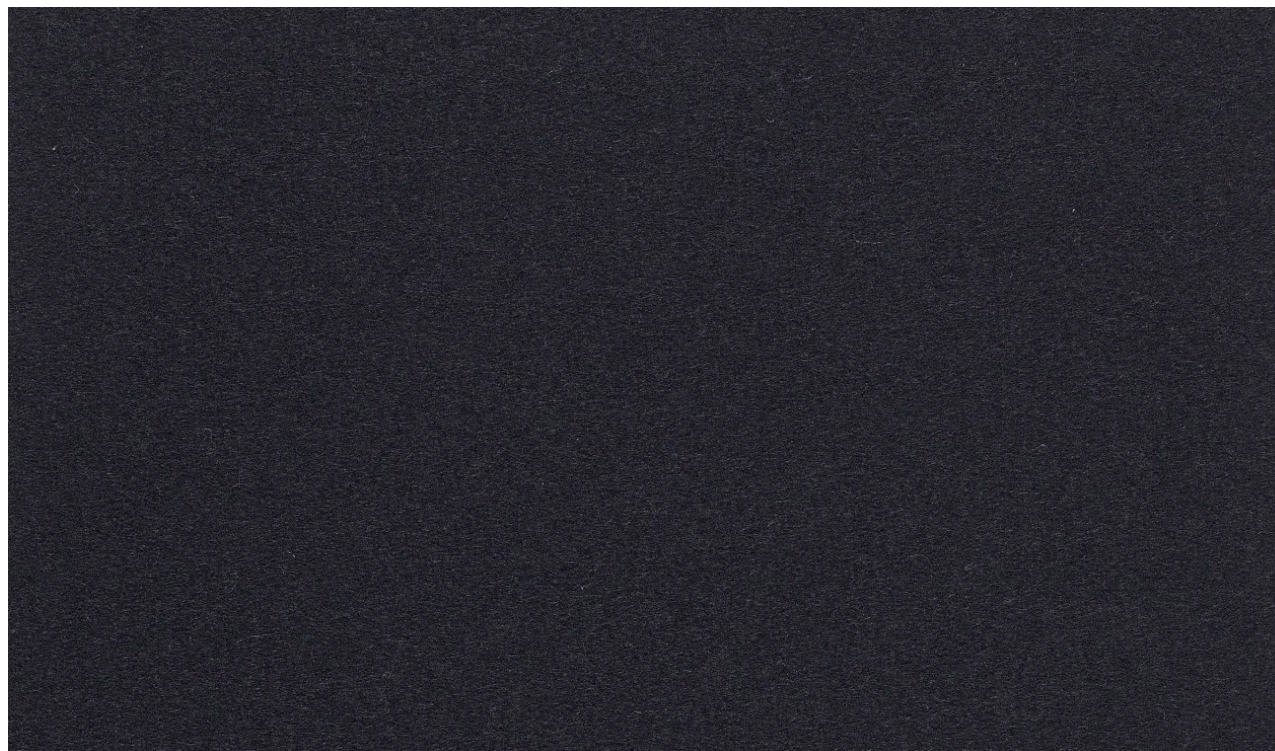
A

D

DIVINA 3

Divina 3, designed by Finn Sködt, has a surface that is smooth, directionless, and uniform in a manner that is similar to the properties of felt. It is very hardwearing at 45,000 rubs Martindale.

100% NEW WOOL



DIVINA 3 191

## RANGE

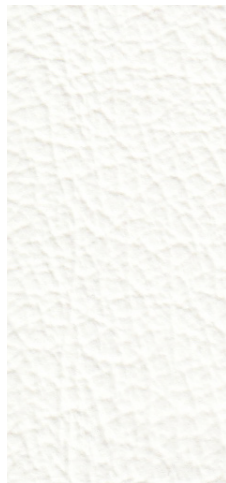
A

D

### FINISHED LEATHER

Our finished leather is soft, supple, and hardwearing. A corrected grain cow hide leather, it is water resistant and easy to clean making it suitable for a wide range of applications.

FINISHED LEATHER



IVORY



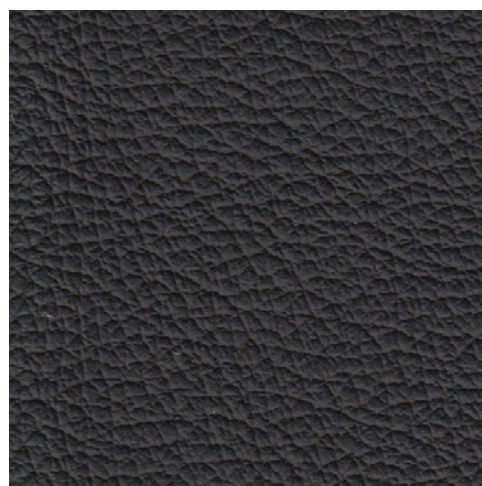
DUNE



CHAI



CHOCOLATE



LICORICE



FOG

**RANGE**

A

D

**HARALD 3 VELVET**

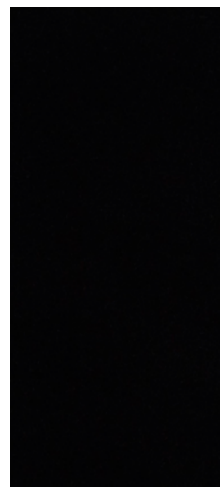
Harald is a closely-woven, short-pile velour with a luxuriously soft texture and rich colour. Designed by Raf Simons and Fanny Aronsen, Harald is hardwearing at 100,000 rubs Martindale.

100% COTTON

PLEASE NOTE: Harald is suspended in the UK until further notice



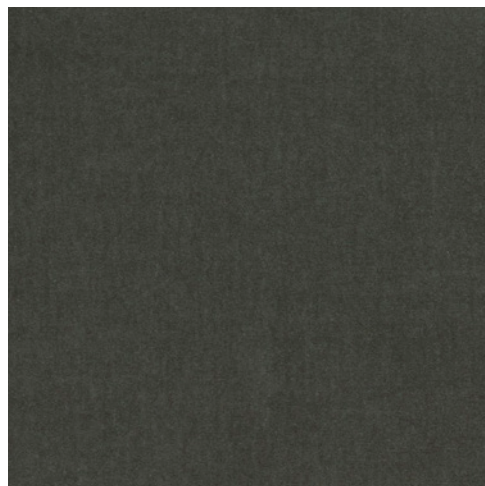
HARALD 3 212



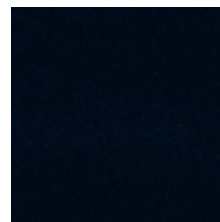
HARALD 3 192



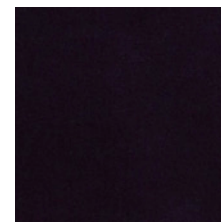
HARALD 3 182



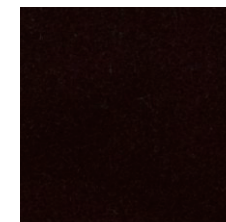
HARALD 3 242



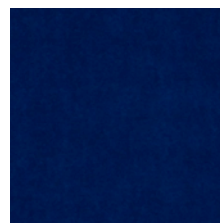
HARALD 3 792



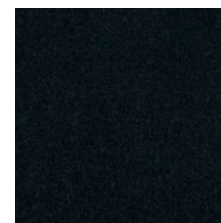
HARALD 3 692



HARALD 3 382



HARALD 3 772



HARALD 3 982



HARALD 3 952

**RANGE**

B

D

NATURAL GRAIN LEATHER

The natural grain of this finished cow hide leather is preserved, the surface lightly buffed. Natural grain variations lend each piece individuality and character.

NATURAL GRAIN LEATHER



BLACK



BROWN

## RANGE

B

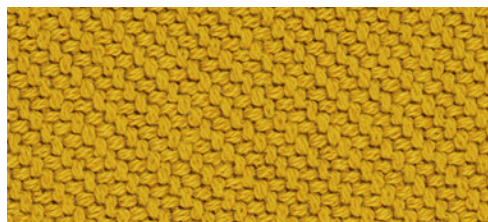
### CODA 2

Designed by Norway Says & Per Bjørnsen, Coda is woven in two layers with two colours to highlight its three-dimensional character. This tactile fabric is extremely hardwearing at 100,000 rubs Martindale.

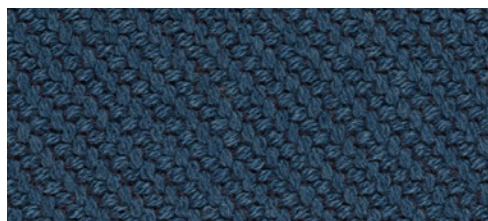
90% NEW WOOL/10% NYLON



CODA 2 422



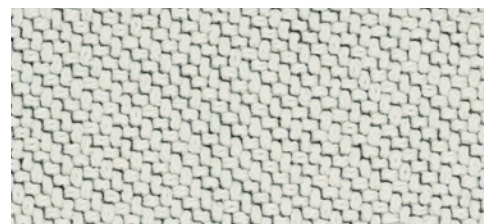
CODA 2 442



CODA 2 762



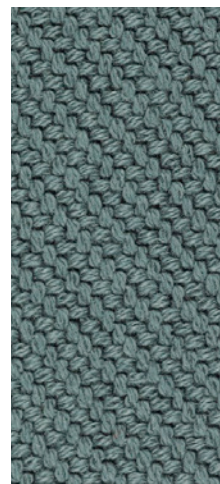
CODA 2 232



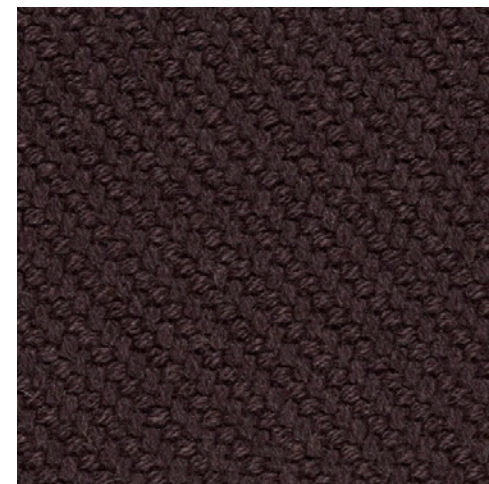
CODA 2 100



CODA 2 182



CODA 2 962



CODA 2 382

D

**RANGE**

B

D

**SUNNIVA 2**

Designed by Fanny Aronsen and Raf Simons, this fabric combines two tones of wool, woven in a fine, flat, tweed-like pattern with a glossy top note. It is very hardwearing at 50,000 rubs Martindale.

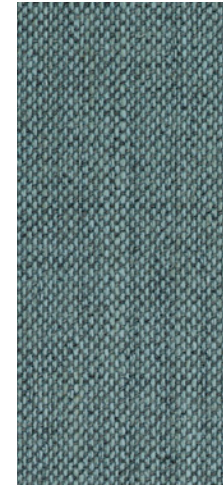
58% NEW WOOL/25% VISCOSE/8% LINEN/5% NYLON/4% POLYESTER



SUNNIVA 2 236



SUNNIVA 2 717



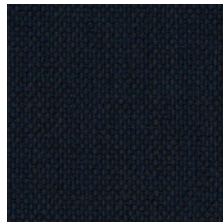
SUNNIVA 2 152



SUNNIVA 2 132



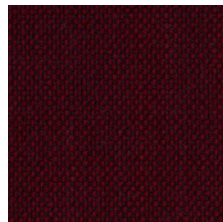
SUNNIVA 2 811



SUNNIVA 2 192



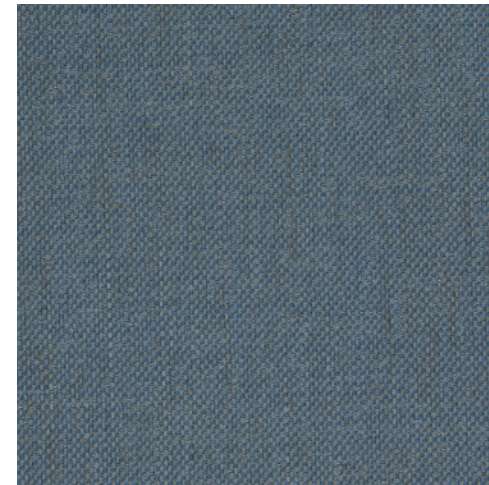
SUNNIVA 2 1079



SUNNIVA 2 662



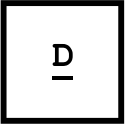
SUNNIVA 2 242



SUNNIVA 2 752



**RANGE**



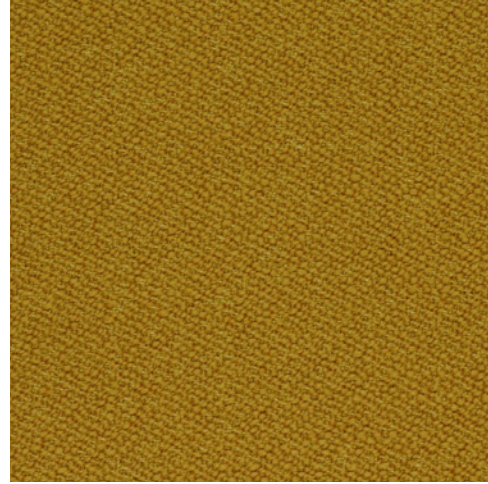
**VIDAR 3**

Woven from bouclé yarns with a regular loop size, Vidar has a large-grained texture, a gentle satin surface finish, and great depth. Designed by Raf Simons and Fanny Aronsen, it is extremely hardwearing at 100,000 rubs Martindale.

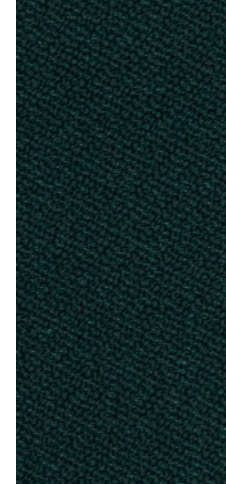
94% NEW WOOL/6% NYLON



VIDAR 3 1511



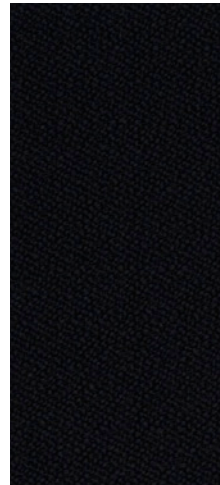
VIDAR 3 472



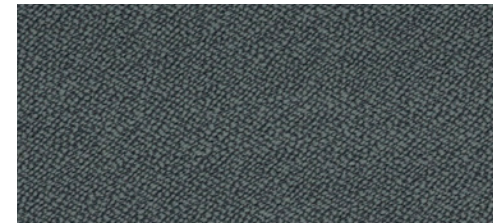
VIDAR 3 1062



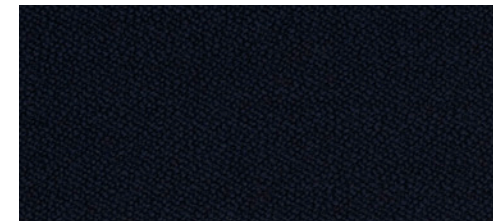
VIDAR 3 182



VIDAR 3 1880

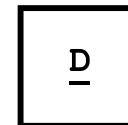


VIDAR 3 152



VIDAR 3 554

## RANGE



### ELMO RUSTICAL

A full grain aniline leather from Scandinavian cattle, Elmorustical is soft and natural, offering outstanding comfort. The distinct features of the natural hide are clearly visible, lending each piece individuality and character.

ANILINE LEATHER



ELMORUSTICAL VIII 99991



ELMORUSTICAL VIII 91089



ELMORUSTICAL VIII 93287



ELMORUSTICAL VIII 22679