

SUNNIVA 3

Designed by Fanny Aronsen and Raf Simons, this fabric combines two tones of wool, woven in a fine, flat, tweed-like pattern with a glossy top note.

MATERIAL:

58% New wool
25% Viscose
8% Linen
5% Nylon
4% Polyester

DESIGNER:

Raf Simons & Fanny Aronsen

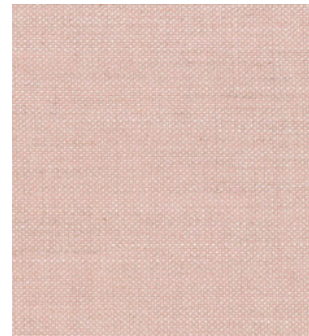
DURABILITY:

50,000 Martindale

DE LA ESPADA



811



236



717



132



152



RANGE