

STEP

Step is a modern interpretation of a classic twill in chenille yarn. The yarn-dyed tonal colours create a subtle diagonal stripe on a fabric with a soft and gentle handle.

MATERIAL:
48% Cotton
30% Viscose
22% Polyester

DESIGNER:
Sahco

DURABILITY:
40,000 Martindale

DE LA ESPADA



004



005



019



002



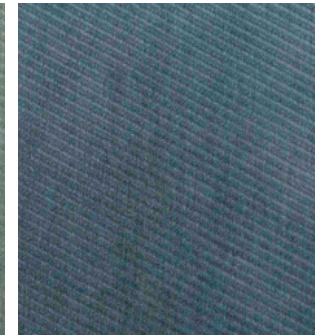
015



018



023



009



RANGE