

# SONAR 3

Inspired by the fine suiting tweeds used in high-end fashion garments, Sonar, designed by Raf Simons, features a complex mix of colours and textures.

**MATERIAL:**

- 59% New wool
- 25% Viscose
- 9% Linen
- 5% Nylon
- 2% Polyester

**DESIGNER:**

Raf Simons

**DURABILITY:**

20,000 Martindale



113



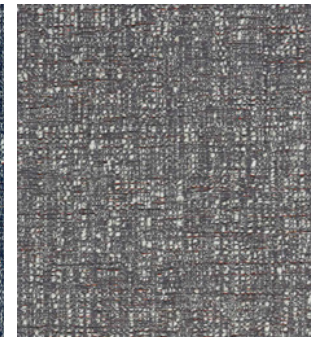
684



173



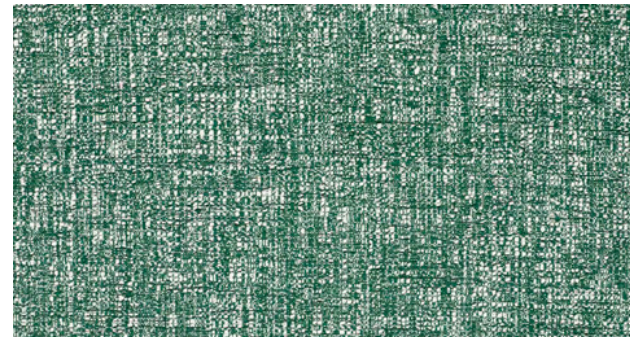
773



153



934



974

