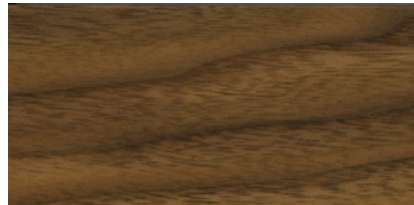


**TIMBER/FINISH OPTIONS**

All timber products are available in all of the solid timbers and finishes listed on pages 3 and 4 of this document unless otherwise indicated in our media. The timber we use is from sustainable farms. The trees on the farms are pruned regularly to allow for consistent grain patterns and fewer knots, ensuring exceptionally strong planks of the highest quality.

Our oil finishes provide a renewable surface for enduring beauty.

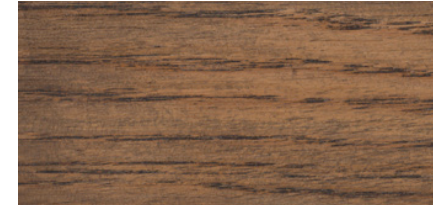
Our oxidised timber is sealed with a clear matte lacquer to maintain the colour whilst preserving the tactility of the surface.



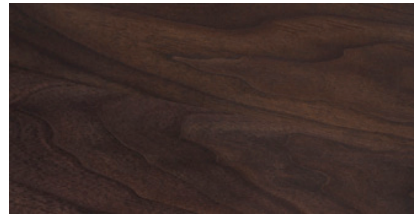
*Danish oiled  
American black walnut*



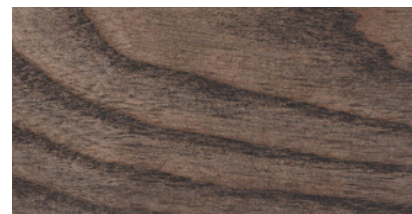
*White oiled  
American black walnut*



*Black oiled  
American white oak*



*Black oiled  
American black walnut*



*Black oiled  
European ash*



*Oxidised  
American white oak*



*Danish oiled  
American white oak*



*Danish oiled  
European ash*



*White oiled  
American white oak*



*White oiled  
European ash*

**PAINT/STAIN OPTIONS**

We offer ten standard colours that can be applied to our products in a variety of ways:

**PAINTED ASH**

European ash timber is wire brushed to create a textured surface before the application of the paint.

**STAINED ASH**

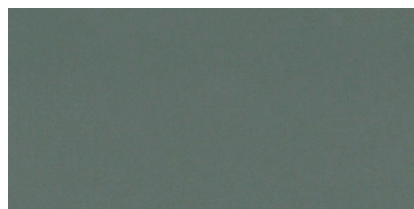
European ash timber is stained then sealed with a clear matte lacquer to maintain the colour whilst preserving the tactility of the surface.

**PAINTED HDF**

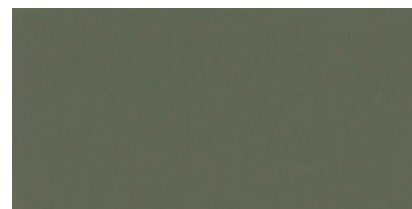
High density fibreboard is painted to create our satin matte finish, or painted then coated in clear lacquer to create our gloss finish.

**PAINTED FIBREGLASS**

Fibreglass is painted to create our satin matte finish, or painted then coated in clear lacquer to create our gloss finish.



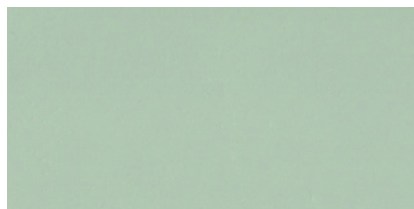
**Bay**  
NCS S 7010 B50G (approximately)



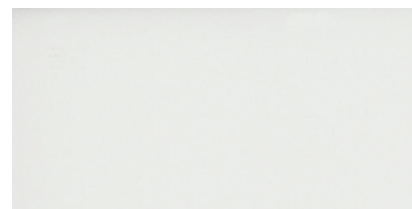
**Cove**  
NCS S 6010 G10Y (approximately)



**Fjord**  
NCS S 3010 G20Y



**Lagoon**  
NCS 2010 G



**White**  
RAL 9016



**Bone**  
NCS S1005-Y20R



**Forest**  
NCS S7020-G



**Black**  
RAL 9005



**Bordeaux**  
NCS S6030-R10B



**Ochre**  
NCS S 4040-Y20R