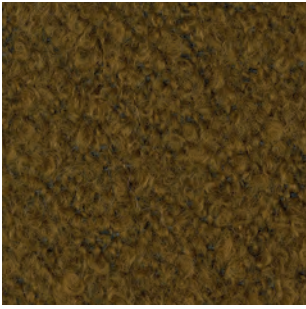
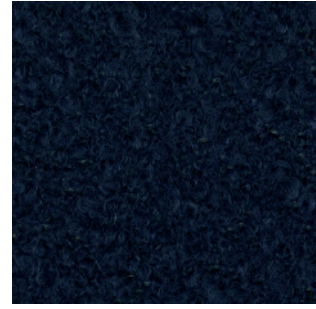


Baru

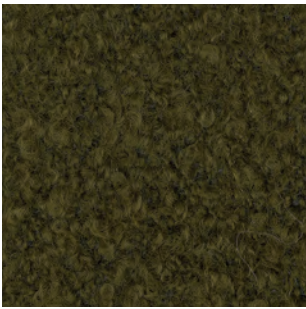
SAHCO



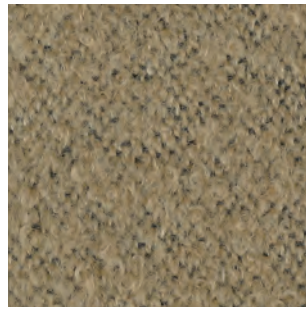
450



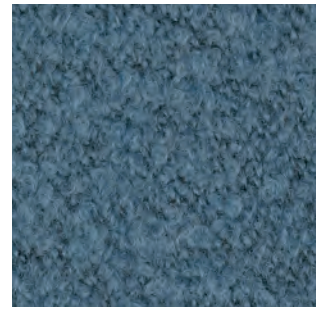
780



950



330

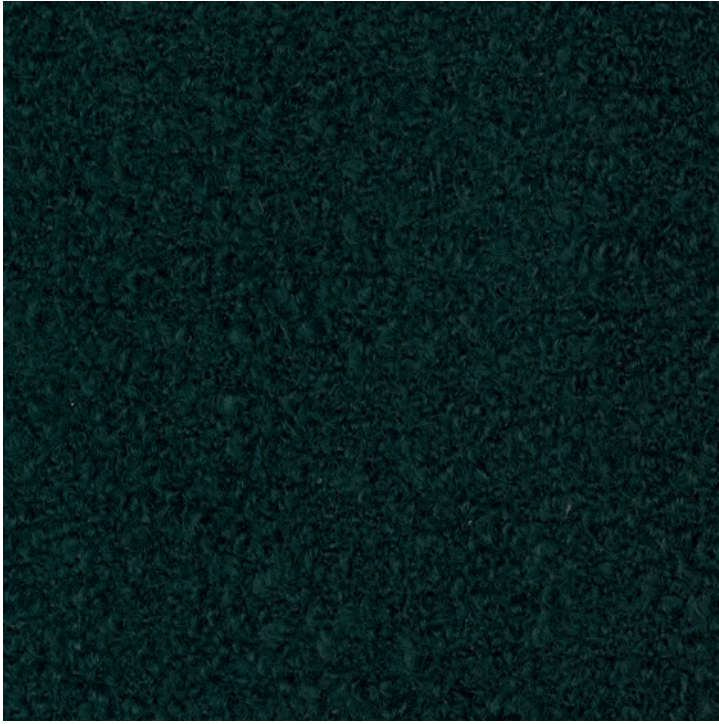


740

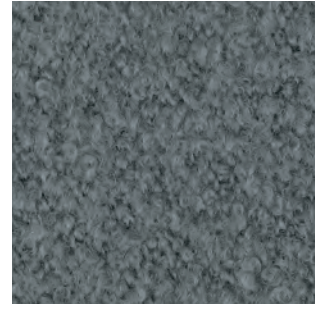


390

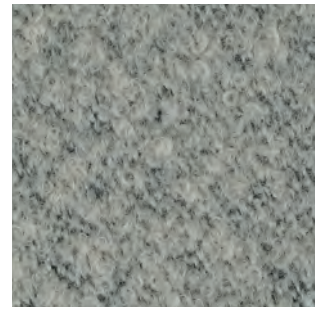
Baru



980



150



120



570



200



410

Baru

DK

Anvendelse Polstring

Beskrivelse 87% ny uld, 10% polyester,

3% polyamid. Bredde 140 cm. Vægt 770 g/lbm

Testning Lysægthed 4-6 (ISO 1-8). Pilling 5 (ISO 1-5). Slidstyrke: 65.000 Martindale.

Flammesikring BS 5852 Crib 5 med behandling,

BS 5852 part 1, EN 1021-1/2, IMO FTP Code

2010 Part 8, US Cal. Bull. 117-2013

Vedligeholdelse Se ISO symboler

UK/US

Application Upholstery

Description 87% new wool, 10% polyester,

3% polyamide. Width 140 cm / 55 in.

Weight 770 g/lm 24.8 oz/sq

Tests Lightfastness 4-6 (ISO 1-8). Pilling 5

(ISO 1-5). Abrasion 65.000 Martindale *

Flame resistance BS 5852 Crib 5 with treatment,

BS 5852 part 1, EN 1021-1/2, IMO FTP Code

2010 Part 8, US Cal. Bull. 117-2013

Care Please see the ISO symbols

DE

Anwendungsbereich Bezugsstoff

Beschreibung 87% Schurwolle, 10% Polyester,

3% Polyamid. Breite 140 cm.

Gewicht 770 g/lfd. Meter

Testergebnisse Lichtechtheit 4-6 (ISO 1-8).

Pilling 5 (ISO 1-5). Scheuerfestigkeit 65.000

Martindale. Flammschutz BS 5852 Crib 5 mit

Behandlung, BS 5852 part 1, EN 1021-1/2, IMO

FTP Code 2010 Part 8, US Cal. Bull. 117-2013

Pflege Siehe ISO Pflegesymbole

NL

Toepassing Bekleding stof

Omschrijving 87% scheerwol, 10% polyester,

3% polyamide. Breedte 140 cm.

Gewicht 770 gr/str.m

Testgegevens Lichtechtheid 4-6 (ISO 1-8).

Pilling 5 (ISO 1-5). Slijtvastheid 65.000

Martindale. Vlamvertragendheid BS 5852 Crib 5

met behandeling, BS 5852 part 1, EN 1021-1/2,

IMO FTP Code 2010 Part 8, US Cal. Bull.

117-2013

Onderhoud Zie de ISO symbolen

FR

Domaine d'utilisation Tissu d'ameublement

Description 87% laine vierge, 10% polyester,

3% polyamide. Largeur 140 cm. Poids 770 g/ml

Tests Résistance à la lumière 4-6 (ISO 1-8).

Boulochage 5 (ISO 1-5). Résistance à l'abrasion

65.000 Martindale. Normes au feu BS 5852 Crib

5 avec traitement, BS 5852 part 1, EN 1021-1/2,

IMO FTP Code 2010 Part 8, US Cal. Bull.

117-2013

Entretien Voir les symboles ISO

IT

Destinazione d'uso Tessuti per tappezzeria

Caratteristiche 87% lana vergine, 10% poliestere,

3% poliammide. Larghezza 140 cm.

Peso 770 gr/mtl

Test Resistenza alla luce 4-6 (ISO 1-8). Pilling 5

(ISO 1-5). Abrasione 65.000 Martindale.

Ignifugazione BS 5852 Crib 5 se trattato ignifugo,

BS 5852 part 1, EN 1021-1/2, IMO FTP Code

2010 Part 8, US Cal. Bull. 117-2013

Manutenzione Per favore seguire simboli ISO

ES

Aplicación Tapicería

Descripción 87% lana virgen, 10% poliéster,

3% poliamida. Anchura 140 cm. Peso 770 gr/ml

Pruebas Resistencia a la luz 4-6 (ISO 1-8).

Relleno 5 (ISO 1-5). Resistencia al desgaste

65.000 Martindale. Resistencia al fuego

BS 5852 Crib 5 con tratamiento, BS 5852 part 1,

EN 1021-1/2, IMO FTP Code 2010 Part 8,

US Cal. Bull. 117-2013

Mantenimiento Consulte los símbolos ISO

JP

用途 室内装飾用テキスタイル、

組成 ニューウール 87%、ポリエステル 10%、

ポリアミド 3%。幅 140 cm。重さ 770 g/lin.m

テスト 耐光性 4-6 (ISO 1-8)。ピリング 5

(ISO 1-5)。マーチンデル法により摩擦運動約

65,000 回。防炎性 特殊耐炎処理を行うことに

より、BS 5852 crib 5 に到達可能、BS 5852

part 1, EN 1021-1/2, IMO FTP Code 2010

Part 8, US Cal. Bull. 117-2013

お手入れ 詳細は、ISO 認証をご覧ください

CN

应用 软装面料

成分 87% 新羊毛, 10% 涤纶, 3% 聚酰胺。

幅宽 140 cm。克重 770 g/lin.m

耐磨指数 耐光性 4-6 (ISO 1-8)。抗起球度 5

(ISO 1-5)。马丁代尔法约 65,000 转。阻燃 特别

耐火处理时 BS 5852 crib 5 可以满足, BS 5852

part 1, EN 1021-1/2, IMO FTP Code 2010 Part 8,

US Cal. Bull. 117-2013

维护 请参阅 ISO 符号



* Abrasion test results exceeding ACT performance guidelines are not product lifespan. Multiple factors affect fabric durability and appearance retention