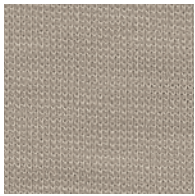
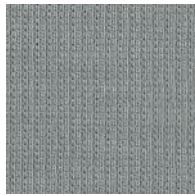


Uniform Mélange

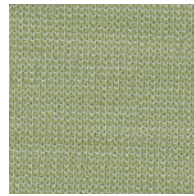
**kvadrat febrik**



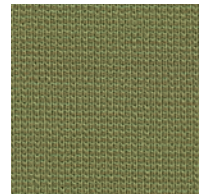
103



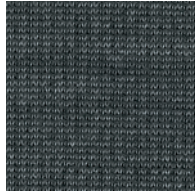
123



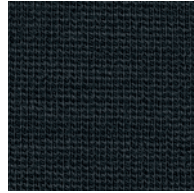
913



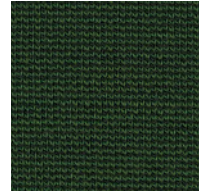
933



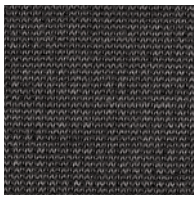
163



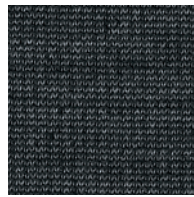
193



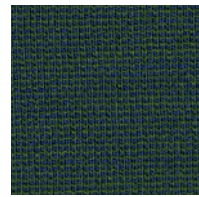
993



283



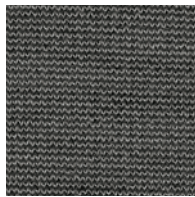
183



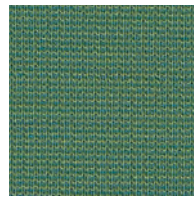
983



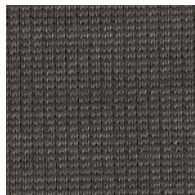
293



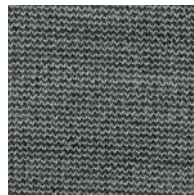
153



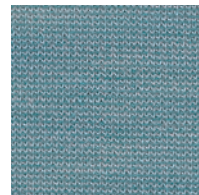
963



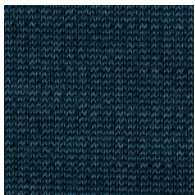
263



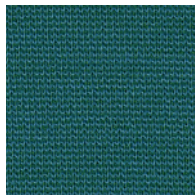
133



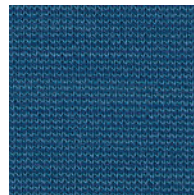
813



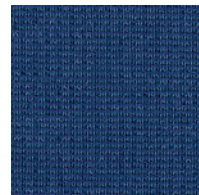
883



833

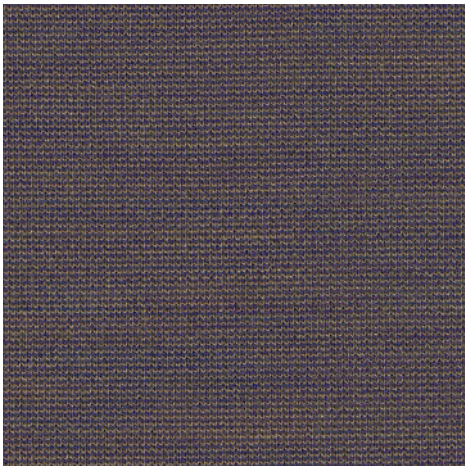


753

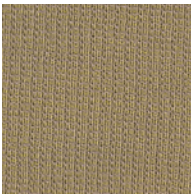


763

Uniform Mélange



333



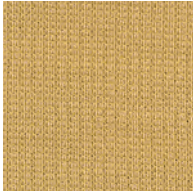
413



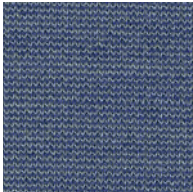
453



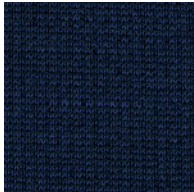
353



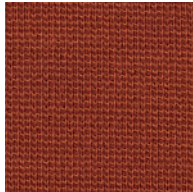
433



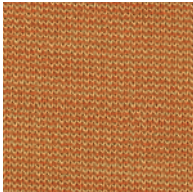
723



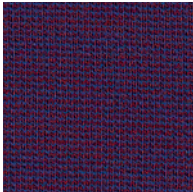
793



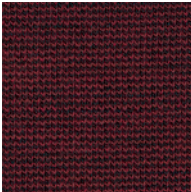
553



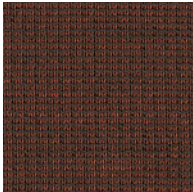
463



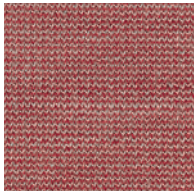
683



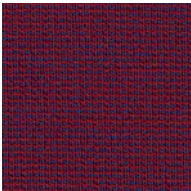
583



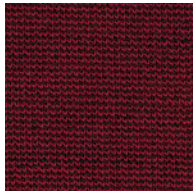
363



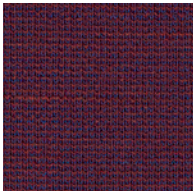
623



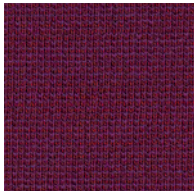
663



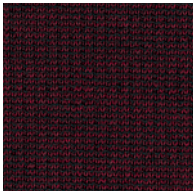
563



653



633



593



## Uniform Mélange

Designed by FEBRIK

DK

**Anvendelse** Møbelstof til privat som offentlig indretning.

**Beskrivelse** 68% ny uld, 22% nylon, 10% polyester. 2 mm skum. Bredde ca. 165 cm. Vægt ca. 870 g/lbm. Garnfarvet. I lyse farver kan fremmede fibre forekomme. Nuanceforskelle kan forekomme.

**Ægkant** ⇔

**Slidstyrke:** Ca. 100.000 slidbevægelser efter Martindale metoden EN ISO 12947. **Lysægted** (ISO) 5-7. **Pilling** (EN ISO) 4-5. **Gnidægted** (ISO) tør 4-5, våd 4-5. **Flammesikring:** AS/NZS 1530.3. AS/NZS 3837. ASTM E84 Class A hæftet. BS 5852 Crib 5 med flammesikring. BS 5852 part 1. DIN 4102 B2. EN 1021-1/2. IMO FTP Code 2010:Part 8. NFPA 260. US Cal. Bull. 117-2013. (Kopi af testrapport kan rekvireres). **Vedligeholdelse** Se ISO symboler. Desinfektion, se kvadrat.dk.

UK/US

**Application** Upholstery for both domestic and public decoration.

**Description** 68% new wool, 22% nylon, 10% polyester. 2 mm foam. Width app. 65 inches (165 cm). Weight app. 870 g/lin.m, 28.0 oz/ly. Yarn dyed. Foreign fibres may occur in light colours. Colour differences may occur.

**Selvedge/Direction** ⇔

**Abrasion:** App. 100,000 rubs acc. to the Martindale method EN ISO 12947\*. **Lightfastness** (ISO) 5-7. **Pilling** (EN ISO) 4-5. **Fastness to rubbing** (ISO) dry 4-5, wet 4-5. **Flame resistance:** AS/NZS 1530.3. AS/NZS 3837. ASTM E84 Class A unadhered. BS 5852 Crib 5 with treatment. BS 5852 part 1. DIN 4102 B2. EN 1021-1/2. IMO FTP Code 2010:Part 8. NFPA 260. US Cal. Bull. 117-2013. (Copy of test report available). **Care** Please see the ISO symbols. Desinfection, see kvadrat.dk.

DE

**Anwendungsbereich** Möbelstoff wohlgeeignet im sowohl privaten als öffentlichen Wohnbereich.

**Beschreibung** 68% Schurwolle, 22% Nylon, 10% Polyester. 2 mm Schaumstoff. Breite ca. 165 cm. Gewicht ca. 870 g/m. Garngefärbt. In hellen Farben können Fremdfasern vorkommen. Farbunterschiede können vorkommen.

**Webkante** ⇔

**Scheuerfestigkeit:** Ca. 100.000 Scheuerhübe nach der Martindale Methode EN ISO 12947. **Lichtechtheit** (ISO) 5-7. **Pilling** (EN ISO) 4-5. **Reibeichtheit** (ISO) trocken 4-5, nass 4-5. **Flammschutz:** AS/NZS 1530.3. AS/NZS 3837. ASTM E84 Class A unverklebt. BS 5852 Crib 5 mit Ausrüstung. BS 5852 part 1. DIN 4102 B2. EN 1021-1/2. IMO FTP Code 2010:Part 8. NFPA 260. US Cal. Bull. 117-2013. (Testbericht verfügbar). **Pflege** Siehe ISO Pflegesymbole. Desinfektion, siehe kvadrat.dk.

NL

**Toepassing** Toepasbaar zowel in particuliere woningen als voor projecten.

**Omschrijving** 68% scheerwol, 22% nylon, 10% polyester. 2 mm schuimlaag. Breedte ca. 165 cm. Gewicht ca. 870 gr/str. m. Gareengeverfd. Afwijkende vezels kunnen voorkomen in lichte kleuren. Kleurverschillen kunnen optreden.

**Zelfkant** ⇔

**Slijtvastheid:** Ca. 100.000 toeren Martindale EN ISO 12947. **Lichtechtheid** (ISO) 5-7. **Pilling** (EN ISO) 4-5. **Wrijftechtheid** (ISO) droge 4-5, natte 4-5. **Brandwerendheid:** AS/NZS 1530.3. AS/NZS 3837. ASTM E84 Class A ongelijmd. BS 5852 Crib 5 met behandeling. BS 5852 part 1. DIN 4102 B2. EN 1021-1/2. IMO FTP Code 2010:Part 8. NFPA 260. US Cal. Bull. 117-2013. (Op aanvraag sturen wij u graag een kopie van het testrapport toe). **Onderhoud** Zie de ISO symbolen. Desinfectie, kvadrat.dk.

FR

**Domaine d'utilisation** Tissu d'ameublement pour aménagement privé et public.

**Description** 68% laine vierge, 22% nylon, 10% polyester. 2 mm de la mousse. Largeur env. 165 cm. Poids env. 870 g/m lg. Teinture sur fil. Dans les couleurs claires, présence de fibres étrangères. Ecart de coloris possibles.

**Lisière** ⇔

**Résistance à l'abrasion:** Env. 100.000 résolutions selon le procédé Martindale EN ISO 12947. **Résistance à la lumière** (ISO) 5-7. **Boulochage** (EN ISO) 4-5. **Résistance au frottement** (ISO) sec 4-5, mouillé 4-5. **Normes au feu:** AS/NZS 1530.3. AS/NZS 3837. ASTM E84 Class A non collé. BS 5852 Crib 5 avec traitement. BS 5852 part 1. DIN 4102 B2. EN 1021-1/2. IMO FTP Code 2010:Part 8. NFPA 260. US Cal. Bull. 117-2013. (La copie du compte rendu des tests est disponible sur demande). **Entretien** Voir les symboles ISO. Désinfection, voir kvadrat.dk.

IT

**Destinazione d'uso** Rivestimento per imbottiti, casa e contract.

**Caratteristiche** 68% lana vergine, 22% nylon, 10% poliestere. 2 mm gommapiuma. Altezza circa 165 cm. Peso circa 870 gr/mtl. Tinto in filo. Nei colori chiari possono essere presenti fibre di tonalità scure. Possibili differenze per colore.

**Cimosa** ⇔

**Abrasion:** Circa 100.000 cicli/metodo Martindale EN ISO 12947. **Resistenza alla luce** (ISO) 5-7. **Pilling** (EN ISO) 4-5. **Resistenza allo sfregamento** (ISO) condizione a secco 4-5, condizione umido 4-5. **Ignifugazione:** AS/NZS 1530.3. AS/NZS 3837. ASTM E84 Class A non incollato. BS 5852 Crib 5 se trattato ignifugo. BS 5852 part 1. DIN 4102 B2. EN 1021-1/2. IMO FTP Code 2010:Part 8. NFPA 260. US Cal. Bull. 117-2013. (Disponibile copia del test). **Manutenzione** Per favore seguire simboli ISO. Per disinfettare, vedi il sito kvadrat.dk.

ES

**Aplicación** Tapicería para hogares e instituciones.

**Descripción** 68% lana virgin, 22% nilón, 10% poliéster. 2 mm espuma. Anchura aprox. 165 cm. Peso aprox. 870 gr/ml. Teñido en hilo. En los colores claros puede haber fibras de otro color. Posibles variaciones de color.

**Filo** ⇔

**Resistencia al desgaste:** Aprox. 100.000 ciclos según el método Martindale EN ISO 12947. **Resistencia a la luz** (ISO) 5-7. **Relleño** (EN ISO) 4-5. **Solidez al frotamiento** (ISO) seco 4-5, mojado 4-5. **Resistencia al fuego:** AS/NZS 1530.3. AS/NZS 3837. ASTM E84 Class A sin pegar. BS 5852 Crib 5 con tratamiento. BS 5852 part 1. DIN 4102 B2. EN 1021-1/2. IMO FTP Code 2010:Part 8. NFPA 260. US Cal. Bull. 117-2013. (Copia del informe de ensayos disponible). **Mantenimiento** Consulte los símbolos ISO. Desinfección, visita kvadrat.dk.

JP

**用途** 住宅あるいは公共のインテリア、家具用テキスタイル。

**詳細** 68% ニューウール、22% ナイロン、10% ポリエステル。フォーム 2 mm。幅：165 cm。重量：1m あたり約 870 g。糸染め。明色の場合異質繊維が混在する場合があります。色彩ニューアンスに多少の違いが生じる可能性あり。

**耳、ふち。** ⇔

**テスト:**

**磨耗:** マーチンデール法により摩擦運動約 100,000 回。EN ISO 12947. **色あせ保障:** (ISO) 5-7. **ピリング** (EN ISO) 4-5. **摩擦保証:** (ISO) 乾燥状態 4-5、濡れた状態 4-5. **耐炎性:** AS/NZS 1530.3. AS/NZS 3837. ASTM E84 Class A unadhered. 特殊耐炎処理を行うことにより、BS 5852 Crib 5 に到達可能。BS 5852 part 1. DIN 4102 B2. EN 1021-1/2. IMO FTP Code 2010:Part 8. NFPA 260. US Cal. Bull. 117-2013. (テストレポートのコピー入手可能。)

**手入れ**

ISO シンボル参照。消毒について?kvadrat.dkまで参照ください。

CN

**适用范围** 家居和公共空间软包面料。

**成分** 68% 新羊毛, 22% 尼龙, 10% 涤纶。2 mm 燃泡棉。幅宽约 65 英寸 (165cm)。重量约 870 克/延米。纱染色面料。匹染色面料。颜色可能稍有色差。

**图纹方向** ⇔

**马丁代尔法** 约 100,000 转。EN ISO 12947. **光照色牢度** (ISO) 5-7. **起毛起球** (EN ISO) 4-5. **摩擦色牢度** (ISO) 干燥 4-5, 湿 4-5. **阻燃性:** AS/NZS 1530.3. AS/NZS 3837. ASTM E84 Class A unadhered. 特别耐火处理时 BS 5852 Crib 5 可以满足。BS 5852 part 1. DIN 4102 B2. EN 1021-1/2. IMO FTP Code 2010:Part 8. NFPA 260. US Cal. Bull. 117-2013. (可提供测试报告副本)。 **维护** 请参照 ISO 标志。消毒请参阅 kvadrat.dk。



5 year warranty



Quality and environmental system accreditation according to ISO 9001 and ISO 14001.

\* ACT® Registered Certification Marks

\* Abrasion test results exceeding ACT performance guidelines are not an indicator of product lifespan. Multiple factors affect fabric durability and appearance retention.

Contact and further information [kvadrat.dk](http://kvadrat.dk)

US contact info: 1-800-620-9309