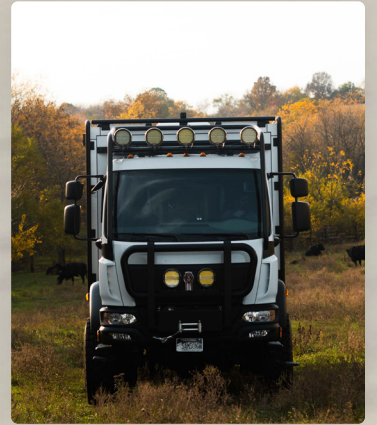




PATAGONIA



PATAGONIA

Vehicle Overview:

- Kenworth K370 Extended Cab 4x4 Chassis
- GXV Composite Sandwich Panel Construction, 60mm
- GXV Exclusive 4-Wheel Drive System with Push Button Control

Exterior Features:

- Body Length: 22' - Body Width: 96"
- Entry Door with 3-point Stainless Steel Lock System
- Exterior Compartment with Storage Tray, 800lb Capacity
- Armor Vision™ Dual-Pane Glass with Blinds & Screens
- Aluminum Electric Entry Step
- Awning, Electric Operation 16'
- Front 18,000 lb Superwinch Recover System
- Airports Installed on Driver and Passenger Sides

Kitchen:

- Cabinetry Package: Laminate Cabinets
- Stainless Steel Sink, Single Bowl, Single Lever Faucet
- Vitrifrigo Marine-Grade 2 Door Refrigerator/Freezer
- Kenyon Dual Burner Cooktop
- Contoure Convection/Microwave Oven

Washroom:

- Extra Large Wet Bath
- Stainless Steel Sink with Full Width Vanity
- Medicine Cabinet with Mirror
- Thetford® Cassette Toilet
- Shower Curtin for Separation from Cassette and Vanity

Dining:

- Bench Seating with Adjustable Table
- Booth Converts to Full Size Bed
- Under Cabinet Energy Efficient LED Lighting

Bedroom:

- Queen Mattress: 60" x 80"
- Glass Tile Backsplash Matching the Kitchen
- Upright Cabinets on Passenger and Driver Sides
- Splendide Combo Washer Dryer Option/Standing Closet
- 75W USB Type A and C Chargers

Plumbing:

- Fresh Water Supply, Total = 100 Gallon
- Water Pump: Variable Speed, 4.5 gpm
- Gray Water Poly Tank w/ Cold Weather Heating Pad
- Ext. Shower Cold and Hot



Climate Control:

- Trauma 15K BTU Ultra Efficient AC
- Hydronic Water and Air Heating Systems

Electrical

- 3 Mastervolt Batteries totaling 18,000W of Available Power
- Onan Diesel Generator 6kw, with Auto-Start
- 4500W Mastervolt Inverter
- 32" Samsung TV w/ Sonos Stereo System
- 30 A Supplemental Charging While Engine Running
- Dimmable LED Lighting Throughout



870.480.3013
globalxvehicles.com