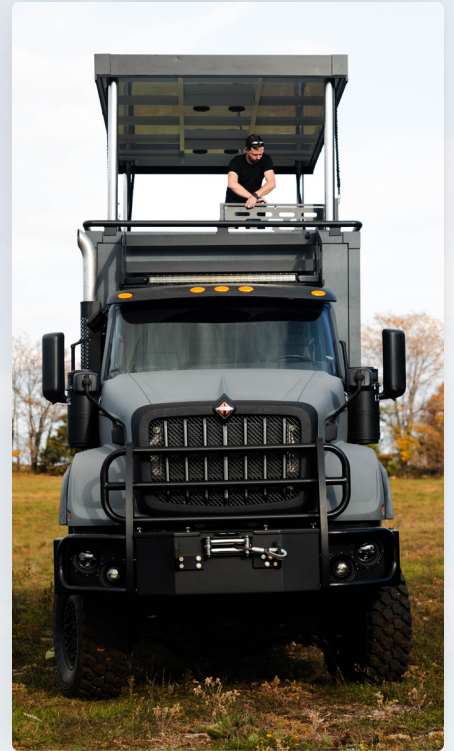




THE SKYLOUNGE



REDEFINING ADVENTURE TRAVEL

PANGEA

Vehicle Overview:

- **Chassis:** 2022 International HX 620 SBA 6x6
- **Engine:** Cummins X15, 500hp, 1850 lb-ft Torque
- **Transmission:** Allison 4500 RDS 6-Speed
- **Drive:** 6-wheel drive and rear wheel steering under 15 mph
- **Interior Trim:** Diamond Edition, black/gray
- **Seats:** ISRI Series 500 black synthetic leather air-ride seats

Exterior Features:

- **Paint:** Line-X XS-100 with X-TRA Topcoat (scratch-resistant)
- **Roof Deck:** Dimmable ceiling lights, starlight seating area for 6, adjustable table
- **Flooring:** synthetic teak with commercial vinyl
- **Outdoor Kitchen:** Electric grill, Vitrifrigo refrigerator
- **Roof Rack:** Custom aluminum with LED light bar
- **Bumpers:** Heavy-duty front custom from bumper with brush guard & winch
- Custom rear bumper with Motorcycle carrier. Carrier has built in winch that lowers motorcycle platform to the ground for ease of loading
- **Custom HID Headlights**

Interior Features:

- **Bedroom:** King-size bed (76"x80")
- Klipsch sound bar and sub-woofer, **Samsung Smart TV** with Antenna
- **Bath:** Wet bath with teak cabinet, stainless steel sink, Thetford cassette toilet
- **Kitchen:** Wolf commercial grade double burner induction cooktop, Wolf commercial grade convection oven, Seagull IV water filtration system. 2 Vitrifrigo Refrigerator-Freezer units
- **Laundry:** Splendide combo washer/dryer
- **Living Area:** Spacious cabinets, Armor Vision dual pane glass windows with built-in shades and bug screens. Skylight Over Dining
- **Technology & Entertainment:**
 - **Sound System:** Fusion with JL Marine speakers
 - **Camera System:** Stinger Integrated driving system with 4 cameras, side cameras are turn signal activated.

Climate Control:

- **Heating:** Webasto hydronic and air thermostatically controlled systems
- **Cooling:** Two high-capacity air conditioning mini-splits
- **Ventilation:** High-velocity exhaust fan with rain & temperature sensors



Power System:

- **Electrical System:** Mastervolt system with two 3500 watt inverters/chargers
- 60 amp Mastervolt MPPT solar charge controller
- 2 Czone touch 10 vehicle control interfaces, one at dinette and one in Bedroom
- 1 Czone touch 7 vehicle control interface located in the upper lounge area.
- **Batteries:** Three Mastervolt 5500 watt hour lithium-ion batteries with 1200 amp hour total rating
- **Solar Panels:** Eight Merlin 200 watt solar panels with a total 1600 Watts of solar
- **Generator:** Onan QD5000 5000 watt Generator with auto-start/stop. Generator can charge battery bank at a rate of 400 amps. 3 hour charge of battery bank from full discharge.

Capacity:

- **Freshwater:** 150 gallons
- **Gray Water:** 56 gallons (freeze-protected)
- **Fuel Tanks:** Two 100-gallon tanks



870.480.3013
globalxvehicles.com