



AUDELIA
NATURALS

ADÉLIE

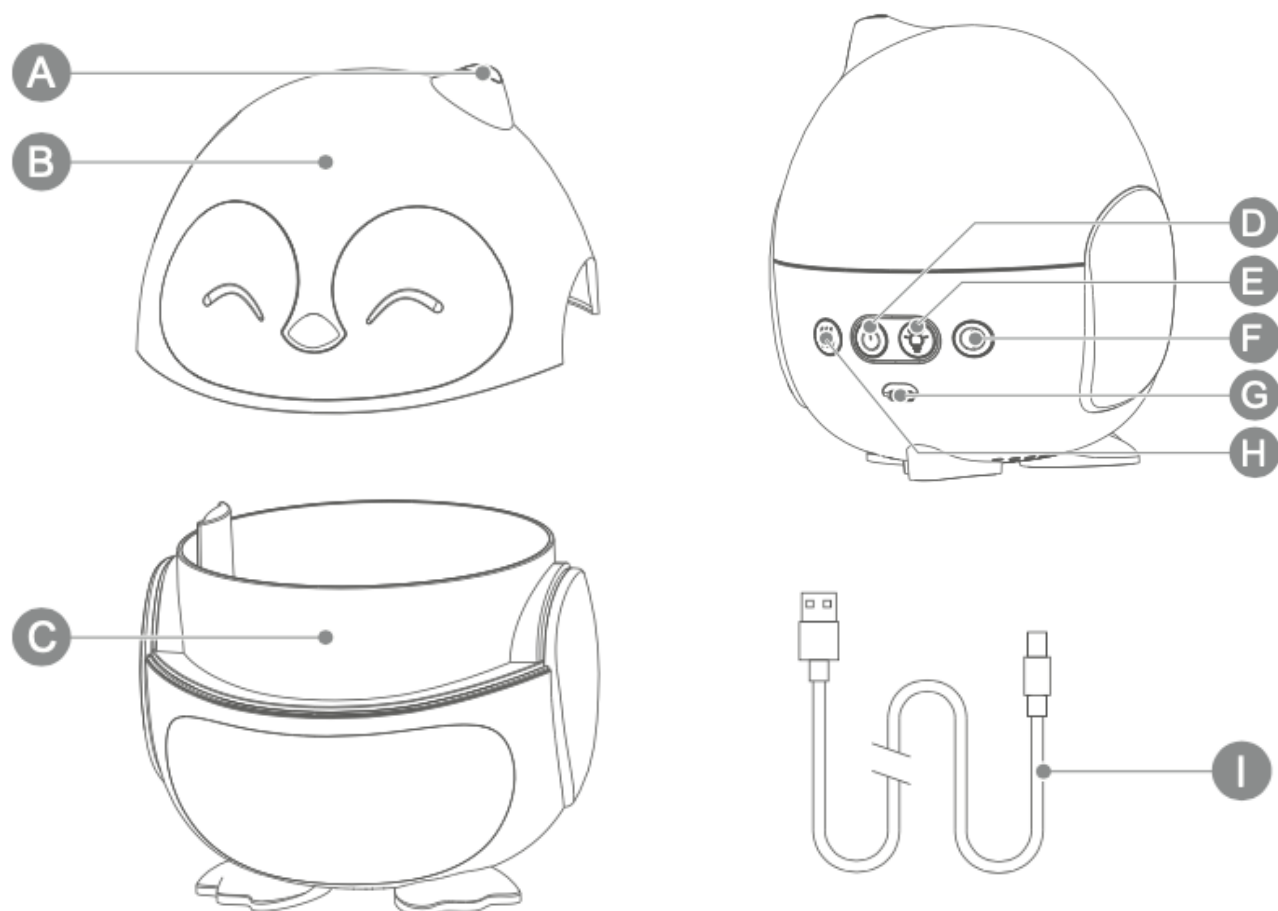
Diffuser



USER MANUAL

WWW.AUDELIANATURALS.COM

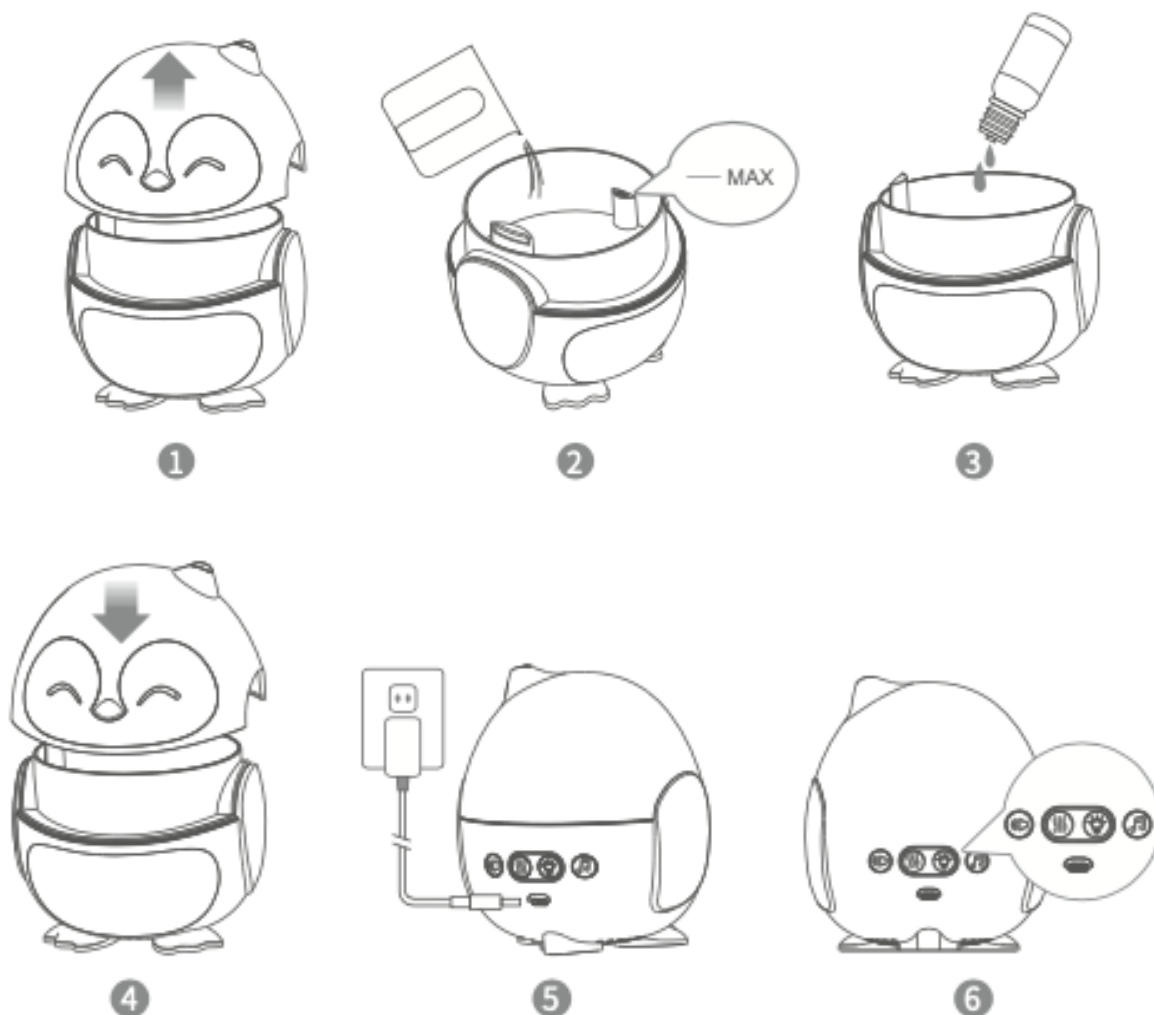
PRODUCT STRUCTURE



- A. Mist Outlet
- B. Body Cover
- C. Water Tank
- D. On-Off
- E. Light Button

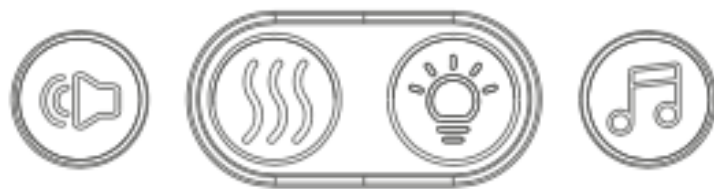
- F. Music
- G. Charging Port
- H. Mist Button
- I. TYPE-C Cable

OPERATION



1. Place the product upright and remove the top cover **vertically**.
2. Add water into the water tank using a cup, do not exceed the maximum water level. **DO NOT** add in water while using the product.
3. Add in essential oils. Recommended to add 2-3 drops of essential oil per 100ML.
4. Install the cover on the main body.
5. Connect the diffuser and 5V 1A adapter by the Type-C cable to power it on.

OPERATION



VOLUME BUTTON

1. When the music button is pressed, the default setting is middle level. There are 5 levels for volume in total.
2. By pressing the button, volume goes up to the highest gear.
3. After highest gear, keep pressing the button, volume comes down to the lowest gear.



MIST BUTTON

1. First press: Continuous mist on, white light on
2. Second press: Interval mist (30s on, 30s off), white light keeps on
3. Third press: Mist off, white light keeps on



LIGHT BUTTON

1. First press: 7 colors run in cycle, red-yellow-green-indigo-blue-violet-white
2. Second press: Fix current light color
3. Third press: Choose light color manually.
4. Press for 2s to turn off the light.



MUSIC BUTTON

1. First press: Music on from first song.
2. Second press: To select song in cycle.
3. Press for 2s to turn off the music.

ACCIDENTAL LEAKAGE

If the product is accidentally spilled during working, please follow the following procedures.

1. Unplug the power supply & take off the cover.
2. Pour away any remaining water from the water tank.
3. Check if there is water go into the base.
4. If there is water inside, shake the product gently to ensure the water comes out from the drain hole. Then, let it air dry for 24hrs.

MAINTENANCE

Preferably after each use, please clean the product as follows:

1. Turn off the diffuser, take off cover and disconnect the DC adapter.
2. Pour out all remaining water from the drain side.
3. To clean, dilute a small amount of kitchen detergent into the water, and wring out a soft cloth after immersing it into water. Then, wipe the product with the cloth softly, and then dry the product with another clean soft cloth.
4. **DO NOT** use other acids or enzymes detergents, as it may give off poisonous gas or cause malfunction.
5. When there is dirt on atomizing sheet, **DO NOT** clean it with sharp object. Instead, use a moist cotton swab.
6. When it is not use for a longer period, please clean all parts, dry them and keep it in dry and cool place.

Note : Make sure to use mild detergent.

PRECAUTIONS

Please read carefully the following safety precautions before using this unit.

The safety precautions listed below are intended to prevent the users from any injury or product damage.

WARNING:

- 1) Turn the power off before cleaning.
- 2) Keep the device from direct sunlight and heat source.
- 3) Do not stab, twist or stretch the power cord, if the cord is damage do not use it.
- 4) If there is any unusual odor, noise or abnormal heat, immediately unplug the product from power source.
- 5) When the product is on, do not touch the water in the tank.
- 6) Do not assemble, repair or modify the product without authorization.
- 7) When product is working, do not cover the humidification mist outlet with any objects.
- 8) Only use tap water and pure water liquid with the product.
- 9) Place product on a flat and firm place. Avoid placing on a carpet, mat or unstable place.
- 10) Do not spray the mist directly on furniture, fabric walls and other objects.
- 11) Do not place the product on wooden floor to avoid damp deformation and damage.
- 12) Place product 2 metres away from any furniture and electrical appliances.
- 13) After using the product in long hours, it should be closed for 60 minutes before use to avoid damage of atomizing components.
- 14) Do not use hot or ice cold water to avoid damaging the product.
- 15) If the product is not used for a long time, please ensure to pour out the remaining water and wipe it clean.
- 16) During cleaning, please avoid the water from entering the air inlet.
- 17) Keep out of reach of children.



TROUBLESHOOTING

Please refer below if the unit fails to work.

Unit failed to turn on	<p>Not enough water in the tank:</p> <ul style="list-style-type: none"> • Add water to the tank using a cup. <p>Power not connected properly:</p> <ul style="list-style-type: none"> • Turn off the power plug, check cable and re-connect carefully. <p>Water exceed the maximum level.</p> <ul style="list-style-type: none"> • Please ensure water amount is lower than 180ml.
Unit suddenly turned off	<p>Check water level:</p> <ul style="list-style-type: none"> • Unit will turn off automatically once the water reached at minimum level for safety. Add water to resume usage. • Water exceed the maximum level. • Please ensure water amount is lower than 180ml.
No mist or abnormal mist	<p>Check water level:</p> <ul style="list-style-type: none"> • Either not enough water or too much water. Add water or reduce water using a cup to ensure and ensure is lower than 180ml. <p>Check the ultrasonic atomizer or plat:</p> <ul style="list-style-type: none"> • Please refer to maintenance instruction to clean the unit. <p>Check the air intake:</p> <ul style="list-style-type: none"> • Too many dirt on the air intake may effect the unit functional. Use soft toothbrush to clean the air intake port.
Water leakage	<p>Cover and inner are not installed properly</p> <ul style="list-style-type: none"> • Remove and reinstall correctly <p>REMINDER: Turn off the unit before opening the cover.</p>

SPECIFICATION

Size	Approx. (W) 133.5mm X (H) 152mm
Weight	Approx. 410g
Power: Input/output	USB DC 5V/1A Approx. 5W
Mist amount	7-15ml/hr
Water capacity	180ML
Material	PP BPA Free
Ultrasonic vibration	3.0MHz
Accessories	Type-C cable
Area Coverage	Up to 20 sqm

WARRANTY REGISTRATION & POLICY

Kindly be reminded to register your unit of Adélie Aroma Diffuser **within 14 days from date of purchase** to ensure the entitlement to the **6 months warranty**. Any registration later than that will not be entertained.

For more information regarding to warranty policy & registration, please scan the QR Code or visit :

<https://audelianaturals.com/pages/an-aroma-diffuser-warranty-policy>

