



# WESTAR SOLUTIONS

## Screen Printing Supplies, Equipment and Services



AccuRIP

Sprayway

BLACKLINE  
Washout Sinks and Filtration Systems

KIMOTO

Camie

FRANMAR  
Chemical

Black Body  
INFRARED DRYING SYSTEMS

Permaset  
Aqua

HIX

EKNAR

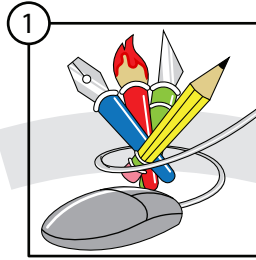
SAATchem

RANAR  
Manufacturing Co., Inc.

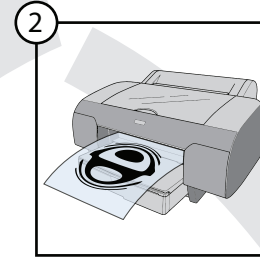
1-800-574-3477

www.westarsolutions.com

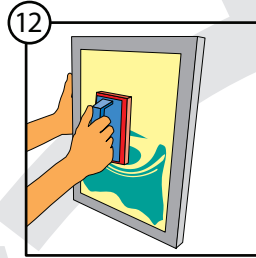
# The Screen Printing Cycle



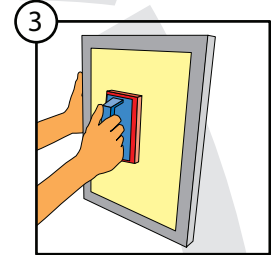
Generate art work



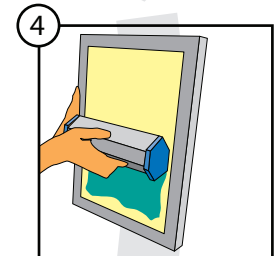
Output film positives



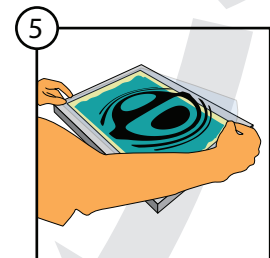
Clean off inks  
Reclaim screen



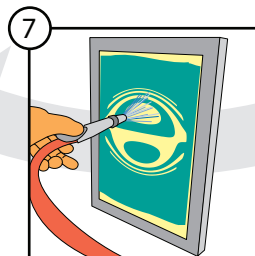
Clean and prep screens



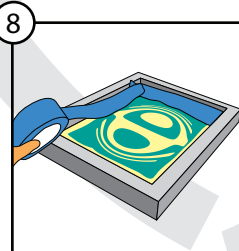
Coat with emulsion  
to create a mask



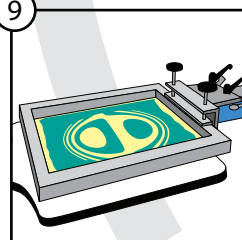
Expose screens to  
harden emulsion



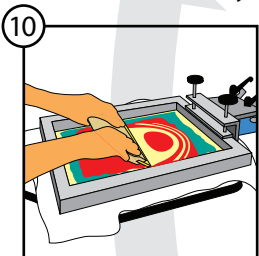
Remove film positive  
and rinse with water



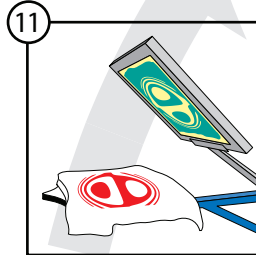
Block out or tape  
off screens



Mount screen in press



Apply ink to screen and  
print with a squeegee



Remove print from press  
and dry inks

This is a basic work flow for a screen print shop showing the steps involved in screen printing t-shirts from beginning to end. Every screen printing job is different and may require more or less steps. The first step is to generate art work, this can be hand drawn, painted, photographed, sculpted or computer generated. The next step is to make a film positive, clear material with black artwork, one for each color your going to print. You then need to create a stencil on your screen, typically with liquid or sheets of emulsion. Once the stencil material is dry you cover the stencil with your film positive and expose it with light to harden off the stencil where ever the film positive does not cover. After the exposure, you remove the film and wash out the image with water. Now you're ready to put the screen on press, apply some ink. Using a squeegee you print your artwork onto your shirt. After all the colors have been printed, remove the shirt from the press and cure the ink using a conveyor dryer, flash cure unit, heat press or with the right inks you can hang them up and air dry the shirt. When you're finished you cleanup the ink, strip the stencil from the screen and start all over.

And of course remember  
to have fun!



Lithopaque pens are an excellent solution for touching up films. Great for adding density to films or fixing scratches and pin holes. Works on both Inkjet and Laser films.

Round Tip	\$8	\$80 dz
Broad Flat Tip	\$8	\$80 dz

## KIMOTO Pake Pens



KIMOTO Super Density Pake Pens! Super density means that one application will cover completely and the ink dries in just seconds. Pake Pens come individually or 12 per box.

Super Fine .1mm Black	\$24	\$240 dz
Super Fine .1mm Red	\$24	\$240 dz
Super Fine .05mm Black	\$26	\$250 dz
Super Fine .05mm Red	\$26	\$250dz



## 208 - Toner Aide

Greatly improves toner darkness on film from laser printers and copiers. Develops higher resolutions. Enhances detail clarity. Cost effective alternative to imagesetter films. Spray onto film after it has been printed and let dry before exposing screen.

<b>Sprayway 208 - 12oz can</b>	\$8.50
<b>Sprayway 208 - case of 12 cans</b>	\$90.00

## Loupes

Great for checking film for scratches, checking screens for pin holes or just looking at anything under magnification.



<b>Small Loupe 10x power</b>	\$20
<b>Big 4" Loupe 5x power</b>	\$20

## AccuRIP Software™



AccuRIP Software is easy to setup and use, accurate, fast-processing, and driver-based... the way an efficient RIP software should be.

AccuRIP's FREE, 2-week, fully-functional software trial is ready for download (Mac and Windows). Follow the Wizard Setup or access AccuRIP's Setup from AccuRIP's FILE MENU. You'll be enjoying the benefits of AccuRIP and making screens with top-quality film output from your Epson® Inkjet printer even before the purchase.

### GREAT VALUE • MANY BENEFITS

With AccuRIP Software, easy work flow is an everyday occurrence. You get the industries fastest and easiest SETUP so every user can be outputting films right away. Answer basic setup questions such as "What printer do you have?" and make just a few selections from a plain language user-interface. Need to change a setting? The same Setup Window is where you change a line screen (Frequency), for example.

With just one AccuRIP Software version you have access to every Epson® model we support. No extra cost when you change your device from one Epson® supported model to another... even going from a small format printer to a wide format printer.

You output films on a regular basis, so efficiency is priority. AccuRIP offers the most convenient work flow. PRINT directly from your favorite graphics program. No new program to learn or unusual work flow. AccuRIP fits right into your natural environment.

You'll appreciate having the AccuRIP to Epson® Driver available in the PRINTER SELECTION OPTION in all your graphic design software. Driver-based is best!

<b>AccuRIP Software</b>	\$495
-------------------------	-------

## aBc™

## ALL BLACK Cartridges!



Epson® Inkjet printers start out as color output devices. With the majority of slots in an Epson® designated to color, these cartridges do NOT have value in the film output process. Because your priority is making quality BLACK films, the color carts are creating an on-going and costly problem - problem solved!

An inkjet sprays ink onto films. Screen-printers need BLACK INK. Their choice is obvious - let's say it's black and white. All Black Ink delivers volume of black dye from cartridges in EVERY SLOT. Stop unnecessarily purchasing color inks. You'll learn that color inks that remain idle lead to costly maintenance to clear the nozzles.

For best results, use the All Black Cartridges, The Accurip Software and Our Waterproof inkjet film (found on the next page). This will get you the highest density film positives, allowing for maximum exposure of your stencil with out compromising artwork. This is the same system we use for our film output service here at Westar Solutions.

Chip resetter (specify model)	\$35
AllBlack for Epson®1400/1430 Starter Kit	\$155
AllBlack for Epson® 1400/1430 Refill Kit	\$99
JetBlack for Epson® R1800	\$195
JetBlack for Epson® R1900	\$195
JetBlack for Epson® 4800	\$552
JetBlack for Epson® 4880	\$532
JetBlack for Epson® 4900	\$990
JetBlack for Epson® 7880	\$586
JetBlack for Epson® 9880	\$586
JetBlack for Epson® 7700/9700	\$800
JetBlack for Epson® 7890/9890	\$1440
JetBlack for Epson® 7900/9900	\$1760

Epson® is a registered trademark of Epson America, Inc

# Inkjet and Laser Films

## WestJet INKJET FILM



WestJet Inkjet Film is a high quality Kimoto film. WestJet ink jet printer film renders obsolete the frosted vellum generally associated with laser printers. Now you can use clear film and avoid the long burn times, heat distortion, light diffusion, etc. Common to laser paper or vellum. Recommended for use with Dye based inkjet printers. For pigment and ultra chrome inks we recommend our waterproof film.

### Westjet Sheets

Size	50 sheets	100 Sheets
8½"x11"	\$25	\$40
8½"x14"	\$30	\$50
11"x17"	\$50	\$85
13"x18"	\$60	\$100
17"x22"	\$90	\$160

### Westjet Rolls

Size	Price
7"x100' roll	\$30
8"x100' roll	\$35
17"x100' roll	\$90
24"x100' roll	\$125

## WaterProof INKJET FILM



Our waterproof film is another great film for use in inkjet printers. Our waterproof film has been specially coated to allow for a use with both dye based, pigment based and ultra chrome inks. Customers have reported using less ink with their dye based printers with our waterproof film than with non-waterproof films, and ink can be more expensive than film.

### Waterproof Sheets

Size	50 sheets	100 Sheets
8½"x11"	\$35	\$49
8½"x14"	\$40	\$59
11"x17"	\$60	\$99
13"x18"	\$75	\$119
17"x22"	\$100	\$180

### Waterproof Rolls

Size	Price
13"x100' roll	\$69
17"x100' roll	\$99
24"x100' roll	\$121
36"x100' roll	\$200
42"x100' roll	\$180

## LaserWest LASER FILM



LaserWest is a high quality Kimoto film. Extremely durable double-matte film specially designed for screen printers to use in the high temperature environments of laser printers and plain paper copiers. It is strong, dimensionally stable, has excellent toner adhesion, is highly translucent and is great when tight registration is needed. It makes crisp film positives directly from your desktop computer. LaserWest is available in 3 and 4 mil thickness. We recommend the 4mil premium grade for multi color jobs requiring halftones.

### Laserwest 3 mil

Size	50 sheets	100 Sheets
8½"x11"	\$25	\$40
8½"x14"	\$35	\$52
11"x17"	\$50	\$70
13"x18"	\$65	\$100

### Laserwest 4 mil

Size	50 sheets	100 Sheets
8½"x11"	\$25	\$40
8½"x14"	\$35	\$52
11"x17"	\$50	\$70
13"x18"	\$65	\$100

**Call For Volume Discounts On All Our Films**

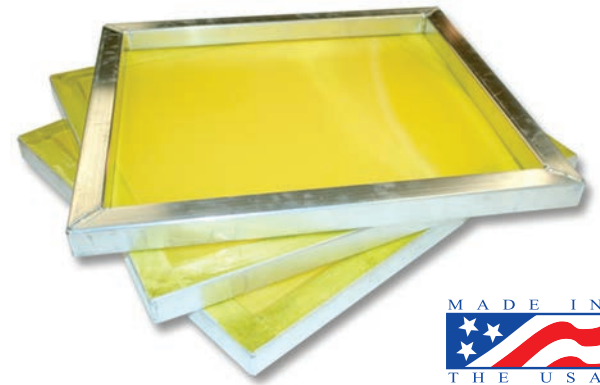
High quality aluminum screen printing frames. We make them from high strength yet light weight aluminum which feature machine welded corners.

We stretch all our frames one at a time to ensure proper tension. We use only the highest quality Murakami® Smartmeshes®.

\*Try our Murakami "S" thread for your white inks. With a 48 micron thread diameter you will print smoother whites with better coverage than a 110tpi mesh screen.

All unstretched frames are ground down on one side and made ready for bonding mesh with our cyanoacrylate glues.

Do you have some old screens that need new mesh? Send them in and we will put new mesh on them. Be sure to remove all ink and tape. *Price for Re-Mesh Screens*



Higher mesh for more detailed graphics

Frame Size	12.5"x17.5"	18"x20"	20"x24"	23"x31"	25"x36"
Inside Dimensions	9"x14.5"	15"x17"	17"x21"	20"x28"	22"x33"
Max Artwork Size	7"x12"	11"x13"	13"x17"	16"x24"	18"x29"
25 white	\$16	\$23 / \$13	\$25 / \$15	\$29 / \$19	\$42 / \$32
40 white	\$16	\$23 / \$13	\$25 / \$15	\$29 / \$19	\$42 / \$32
60 white	\$16	\$22 / \$13	\$24 / \$14	\$28 / \$19	\$42 / \$32
86 white	\$16	\$22 / \$13	\$24 / \$14	\$28 / \$19	\$42 / \$32
110 white	\$16	\$22 / \$13	\$24 / \$14	\$28 / \$19	\$42 / \$32
110 dyed	\$16	\$22 / \$13	\$24 / \$14	\$28 / \$19	\$42 / \$32
125 white	\$18	\$23 / \$13	\$25 / \$14	\$30 / \$20	\$42 / \$32
135 white	\$18	\$23 / \$13	\$25 / \$14	\$30 / \$19	\$44 / \$32
150 "S" dyed*	\$22	\$25 / \$15	\$27 / \$17	\$34 / \$24	\$48 / \$38
160 white	\$20	\$23 / \$13	\$25 / \$15	\$30 / \$19	\$46 / \$36
160 dyed	\$20	\$23 / \$13	\$25 / \$15	\$30 / \$19	\$46 / \$36
200 white	\$22	\$23 / \$13	\$26 / \$16	\$32 / \$21	\$46 / \$36
200 dyed	\$22	\$23 / \$13	\$26 / \$16	\$32 / \$21	\$46 / \$36
225 dyed	\$22	\$26 / \$14	\$28 / \$17	\$36 / \$22	\$48 / \$38
250 dyed	\$22	\$26 / \$14	\$30 / \$20	\$40 / \$23	\$50 / \$42
300hd dyed	\$24	\$28 / \$16	\$32 / \$22	\$45 / \$25	\$55 / \$44
350 dyed	\$26	\$32 / \$20	\$36 / \$24	\$60 / \$32	\$65 / \$49
Frame Only	\$14	\$16	\$18	\$22	\$28



## White or Dyed Mesh?

Why do we have both white and dyed meshes? All meshes start out white, they dye higher mesh counts yellow because emulsions and stencils are not sensitive to yellow light. When your art work has halftone dots or very fine lines, you need to protect each dot from getting overexposed. Yellow or dyed mesh blocks all of the blue light spectrum that passes through, which would normally cause the dots or lines to become overexposed making them smaller and difficult or impossible to washout. Dyed meshes take slightly longer to expose, so you may need to adjust your light time. You will notice a difference when you're able to hold all of your halftones dots.

Our frames manufactured and assembled in USA with mesh from Japan.



## Smartmesh: Precision Mesh, Exceptional Print Qualities!

Maintains consistent mesh openings that aids in preventing spot moire. Warp and weft threads are balanced to stretch equally during the print process. Smartmesh reaches stable tension levels quickly and retains tension for the life of the mesh. Smartmesh has memory, it resists both the initial pull of the squeegee as well as forces during the print stroke to preserve registration from the first print to the last. On finer meshes, the thread surface is treated to help ink transfer to substrate instead of hanging up in the mesh, yielding a better reproduction of artwork. \*Try our Murakami "S" thread for your whites. With a 48 micron thread diameter you will print smoother whites with better coverage than a 110tpi mesh screen.



Mesh Count	Opening	Price per yard	Mesh Count	Opening	Price per yard
25 white 53"wide	766 microns	\$12	150s dyed 63"wide	121 microns	\$18
40 white 53"wide	435 microns	\$12	160 white 53"wide	95 microns	\$16
60 white 53"wide	303 microns	\$12	160 dyed 53"wide	95 microns	\$16
86 white 53"wide	195 microns	\$12	200 dyed 53"wide	73 microns	\$18
110 white 53"wide	151 microns	\$12	225 dyed 53"wide	65 microns	\$20
110 dyed 53"wide	151 microns	\$12	250 dyed 53"wide	62 microns	\$22
125 white 53"wide	132 microns	\$13	300hd dyed 53"wide	45 microns	\$24
135 white 65"wide	117 microns	\$16	350 dyed 53"wide	39 microns	\$32

Call For Volume Discounts



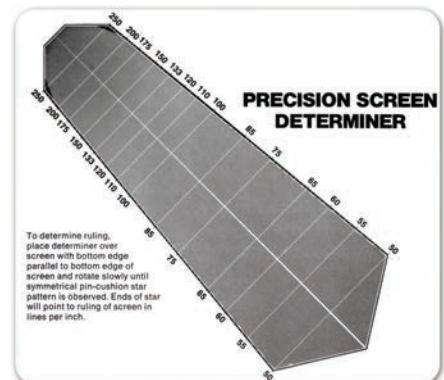
## Mesh / Frame Glues

Known as instant adhesive, Kwik Frame Cyanoacrylate Adhesive offers fast bonding and exceptional performance for substrates ranging from metal to plastic, wood to rubber. Use our EC 300 for low mesh counts in the range of 25-110 threads per inch or our EC 100 for higher thread count meshes. We recommend our EC 1500 for squeegee blade adhesion with our Hardwood Alder Squeegee Handle. Try the Sprayway 211 Activator for an instant hold.

EC100	Low viscosity for high mesh counts	\$45 per pound
EC300	medium viscosity for low mesh counts	\$45 per pound
EC1500	High viscosity for squeegee handle	\$45 per pound
Sprayway 211 Activator	for instant hold - 12oz can	\$8.50 can
Sprayway 211 Activator	for instant hold - Case	\$74 case of 12

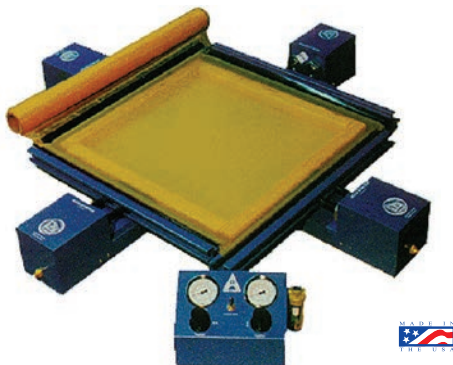
## Screen Determiner

Measures lines per inch of repeating patterns on film, paper, screen mesh etc., From 50 to 250 lines per inch.



Screen Determiner

\$20



## Accu-Stretch

Printing at higher, uniform tension provides faster production speeds, improved registration, longer screen and squeegee life, more consistent ink deposits and lower ink consumption. The patented Accu-Stretch provides these benefits while eliminating complicated stretching systems, training and expensive tools. Self-equalizing stretch clamps provide uniform tension while minimizing fabric waste by enabling you to stretch directly from the fabric bolt. The modular design enables Accu-Stretch to be expanded to virtually any size and width of fabric and frame materials. Other sizes and accessories available, check our web site for the latest.

Accustretch Complete 24"x36"	\$1600
Accustretch Complete 36"x36"	\$1700
Accustretch Complete 48"x48"	\$1900
Accustretch Complete 60"x60"	\$2100

Additional shipping charges may apply



## AdVantage 150

An exposure unit with metal halide technology without metal halide Price. 1200 watt instant start metal halide point light source, designed to handle today's toughest requirements. 20 channel scroll set light integrator featuring Auto-Optimize™ technology. Specially designed blanket for intimate contact with no air strings. 31"x41" maximum screen O.D. The reliability and dependability of Amergraph's industry leading 3 Year limited warranty automatic vacuum release system.

50"wide - 40"deep - 45"high

<b>Advantage 150</b>	\$4595
----------------------	--------

visit our web site for more Amergraph models



## Point1000

Halogen/UV Screen Exposure System  
The Point1000 brings together the best of 2 different light sources to provide you with an affordable, fast and high-resolution screen exposure system. The 1000 watt halogen point light source enables you to capture halftones and fine lines while the UV fluorescent lights help speed exposure. These features combined with a digital timer and extra large screen capacity make the Point1000 an ideal choice for screen printers seeking higher quality images and increased throughput.

<b>Point1000 115v</b>	\$2950
<b>Point1000 230v</b>	\$3150



## Lumitron

The Lumitron Screen Exposure Unit is a great starter exposure unit and well suited for those producing simple athletic or commercial designs. The UV fluorescent light source is balanced to maintain consistent definition in finely detailed designs. The digital timer and powerful vacuum pump help you produce professional, high quality screens right from the start. The compact size conserves space while the large screen capacity is well matched with today's large print sizes.

<b>Lumitron 115v</b>	\$1850
<b>Lumitron 220v</b>	\$2050



## PhotoSharp

Metal halide, point-light screen exposure system. All metal halide point light screen exposure systems are not created equal! Compare for yourself, PhotoSharp's performance is simply unmatched! PhotoSharp offers higher resolution, faster exposure speeds, better light uniformity, and longer lamp life.

<b>Photosharp 120v</b>	\$4250
<b>Photosharp 230v</b>	\$4450



XPO-2426

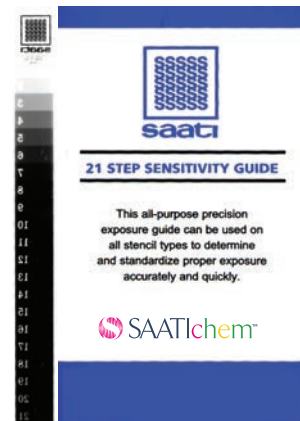


XPO-2848



Ranar XPO Exposure units offer the most requested features among professional screen printers to provide a consistent exposure. These features combined offer the best solution for screen quality at the most competitive price. Great for start up screen printers.

<b>XPO-2426 115v</b>	\$1395
<b>XPO-2426 220v</b>	\$1695
<b>XPO-2426 Cabinet</b>	\$1495
<b>XPO-2848 115v</b>	\$1795
<b>XPO-2848 220v</b>	\$2195



## Exposure Calculator

21 Step exposure guide. This all-purpose precision guide can be used on all stencil types to determine and standardize proper exposure accurately and quickly. We recommend the use of this when you change emulsions, light bulbs and mesh counts. Can be used over and over.

<b>Exposure Calculator</b>	\$22
----------------------------	------

**Call us for replacement bulbs for any brand of exposure units**



## Dual Cure Emulsions



MURAKAMI

Dual Cure emulsion combines the best qualities of SBQ Pure Photopolymer emulsions and diazo emulsion. Dual cures exhibit a wide exposure latitude and ease of use. Murakami's newest dual cure is Photocure PRO that resolves extremely fine halftones and detail and can be used by both graphic and textile printers.

### PhotoCure PRO



Murakami's newest emulsion. Dries very fast, is humidity resistant and exhibits a low surface tack for graphic printing. Excellent for large format graphic and industrial printing. Extremely high resolution properties. Can also be used for fine detail or halftone textile printing. Suitable for use with water based and discharge inks when hardened with Murakami A&B Hardener.

PhotoCure PRO - Quart	\$22
PhotoCure PRO - Gallon	\$62

### SP-9500 Dual Cure



Murakami's premium dual cure graphic emulsion. Excellent solvent resistance. Wide variety of print applications, produces strong durable stencils with excellent detail and definition. Suitable for use with water based and discharge inks when hardened with Murakami A&B Hardener.

SP-9500 Dual Cure - Quart	\$20
SP-9500 Dual Cure - Gallon	\$58



### Diazo and Hardeners

Diazo 4 grams	\$4
Diazo 8 grams	\$6
Diazo 16 grams	\$9
MS-Hardener Gallon	\$45
A&B Hardener 2 parts - 1kg	\$50



## Pre-Sensitized Emulsions



MURAKAMI

Murakami introduced SBQ pure photopolymer technology to the screen printing industry. SBQ is pre-sensitized and has a long shelf life and fast exposures, often 3-5 times faster than diazo based emulsions. Available for textile, graphics, electronics and stainless mesh.

### PhotoCure BLU



Excellent detail and resolution. Coats easily, produces durable stencils. Exposes well on a variety of exposure systems. Good choice for manual printers or automatic shops. Excellent EOM on first coating. Suitable for use with water based and discharge inks when hardened with Murakami A&B Hardener.

PhotoCure BLU - Quart	\$20
PhotoCure BLU - Gallon	\$66

### PhotoCure TXR



Fast exposures. Excellent image to print contrast for easy press set up. Produces strong durable stencils. Virtually pinhole and fish eye free. 3-5 times faster exposures than diazo emulsion. Suitable for use with water based and discharge inks when hardened with Murakami A&B Hardener.

PhotoCure TXR - Quart	\$20
PhotoCure TXR - Gallon	\$66

### Aquasol HV



Murakami's latest textile emulsion, Aquasol HV excels at textile printing. Fast exposing, easy to coat, with outstanding resolution and definition. Excels at printing plastisol, water base, and discharge ink systems. Suitable for use with water based and discharge inks when hardened with Murakami A&B Hardener.

Aquasol HV - Quart	\$22
Aquasol HV - Gallon	\$70



## Capillary Film



Recommended for PCB, MLCC, Graphics, P.O.P., Decals, Membrane Switches, Panels. Murakami Capillary Films are SBQ-PVA based pure photopolymer films. Murakami SBQ Films are developed to overcome common disadvantages of diazo based capillary films. Available in rolls 25" x 394"

<b>MS-15 Roll</b>	\$80
<b>MS-20 Roll</b>	\$88
<b>MS-30 Roll</b>	\$98
<b>MS-40 Roll</b>	\$175
<b>MS-50 Roll</b>	\$160

Other thicknesses available. Call for info.

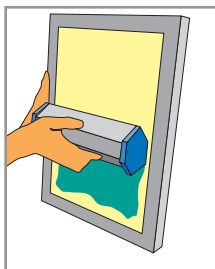
## T-Square



Ensure proper placement of your films when aligning them to your screens. These t-squares are acrylic so it will not harm your delicate meshes. And because our t-square is clear, you can see your film's registration marks through a light table. This is an essential tool for any dark room.

Size	Price
<b>18"</b>	\$20
<b>24"</b>	\$22

## Scoop Coater



Designed to provide easy user control and cost-effective performance. Our Coaters feature rounded edges to allow quick buildup of the desired emulsion thickness and sharp edges for applying thinner deposits and face coats. Convenient to use. Available in any size from 2 inches to 60 inches.

**\$2.50 per inch** - includes end caps

## One Pot Sol C



One Pot Sol C is an SBQ pure photopolymer emulsion that comes pre-sensitized for close tolerance printing applications in graphics and electronics. Designed to print very fine detail with precision resolution of halftones or extremely fine lines. Easily reclaimable. For use with mild to aggressive solvent based inks.

<b>One Pot Sol C - Quart</b>	\$30
<b>One Pot Sol C - Gallon</b>	\$100

## Blockout

Saati Finish F1 is an economical red blockout filler. Works with solvent, uv and plastisol inks. Reclaim with water.



<b>Saati Blockout - Quart</b>	\$10
<b>Saati Blockout - Gallon</b>	\$28

## Blockout Pens



Blockouts pens are for pinhole and general screen repair. Blockout Pens replace tape as the quick fix for jobs in progress.

**Green** Pen for plastisol, UV, and most solvent based inks. Dries in just 30-90seconds. Reclaims with tap water.

**Red** Pen for solvent, plastisol, and UV inks. Dries in 10-15minutes. Reclaims with tap water.

**Blue** Pen for water based, plastisol, UV, and some solvent based inks. Dries in 15-20minutes. Reclaims with stencil remover.

<b>Blockout Pen</b>	\$8
---------------------	-----

## EZ Strip / Remove ER2



A fast acting, effective and economical remover of all stencils except gelatin films. It is easily applied with a spray bottle and worked in with a scrubpad. It is odorless and biodegradable, which means it is safe to wash down your drain. Saati ER2 is a concentrated version of

our famous EZ Strip emulsion/stencil remover great for use in dip tanks. Makes 20gal.

<b>EZ-Strip - Quart</b>	\$12
<b>EZ-Strip - Gallon</b>	\$30
<b>EZ-Strip - 5 Gallon</b>	\$130
<b>ER2 Concentrate - Quart</b>	\$115

## Strip-E-Doo



A ready to use reclaimer and degreaser for the removal of direct emulsions and film from all types of fabrics. Naturally derived, biodegradable and non-toxic, it allows you to meet your environmental stewardship responsibility in protecting your health and safety. Strip-e-doo is a strong oxidant. Keep away from cleaning solvents.

<b>Strip-E-Doo - Quart</b>	\$15
<b>Strip-E-Doo - Gallon</b>	\$40
<b>Strip-E-Doo - 5 Gallon</b>	\$182

## Electric Pressure Washer



**1500 PSI 1.3 GPM**

Includes a Variable Spray Nozzle which adjusts from a pencil point spray to a wide fan spray pattern for the toughest cleaning tasks. On-board Detergent Tank for effortless detergent

application. Ergonomically Designed Spray Gun with 20ft High Pressure Hose and a 35ft Power Cord.

<b>Electric Pressure Washer</b>	\$139.95
---------------------------------	----------

SEE OUR DIP TANKS ON PAGES 16-17

## Squeegees in Alder Hardwood Handle

Smooth finish on the outside, closed cells on the inside. Put the power in the print stroke with Hardwood Squeegees! Alder Hardwood Squeegees are a breakthrough in manual printing. Right away you will notice that there are no bolts which tend to collect more ink so there is less clean up. The blade is glued in place, giving a smooth finish on the outside. On the inside Alder is known for its tight, closed cell construction. That means less absorption of water, solvents and inks. It also means you can use a pressure washer on them without the wood splintering, unlike the squeegee handles made from poplar wood. We sharpen every squeegee blade with a precision sharpening technique, ensuring clean print strokes every time.

- We use high quality Pleiger blade.
- Available in 60, 70, or 80 single durometer.
- Triple duro. 60/90/60 available upon request.
- Triple duro 70/90/70 available upon request.
- Each piece is cut to your specified length.
- Call for larger sizes up to 72”.
- Ask about discounted overstock squeegee too!



**60 duro**  
Very flexible



**70 duro**  
Medium for textile printing



**80 duro**  
Harder for graphic printing

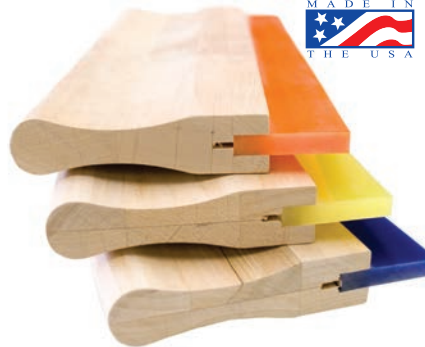
### Squeegee Blade Glue



Known as instant adhesive, Kwik Frame Cyanoacrylate Adhesive offers fast bonding and exceptional performance for substrates ranging from metal to plastic, wood to rubber. Use our EC 300 for low mesh counts in the range of 25-110 threads per inch or our EC 100 for higher thread count meshes. We recommend our EC 1500 for squeegee blade adhesion with our Hardwood Alder Squeegee Handle. Try the Sprayway 211 Activator for an instant hold.

EC1500	\$45 per pound
Sprayway 211 Activator - 12oz can	\$8.50
Sprayway 211 Activator - Case of 12 cans	\$90

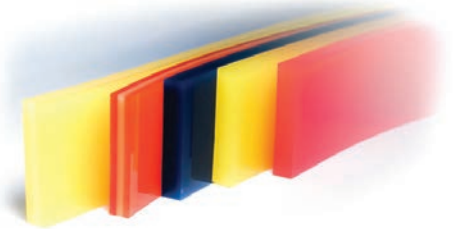
### Complete Squeegee Pricing



Length	Price
3"	\$4.50
4"	\$6.00
5"	\$7.50
6"	\$9.00
7"	\$10.50
8"	\$12.00
9"	\$13.50
10"	\$15.00
11"	\$16.50
12"	\$18.00
13"	\$19.50
14"	\$21.00
15"	\$22.50
16"	\$24.00
17"	\$25.50
18"	\$27.00
19"	\$28.50
20"	\$30.00

Call for larger sizes up to 72"

### Squeegee Blade Only



Blade	72" length	144" length
60 duro	\$50	\$75
70 duro	\$50	\$75
80 duro	\$50	\$75
60/90/60	\$90	\$150
70/90/70	\$90	\$150

We carry all types of squeegee blade. If you are looking for a specialty blade give us a call.

### Alder Hardwood Handle Only



72" length handles	\$24
--------------------	------

Call us for quantity discounts

## Standard Plastisol inks

QCM's XOLB Inks are high opacity multi-purpose inks that are designed to produce extremely opaque prints, yet are very easy to print on a manual press. The smooth, creamy consistency leaves an even uniform print on white flash bases and can be opaque on black without a white base with screens as fine as 150 mesh. XOLB inks print well through screen meshes in the range of 86-300tpi. Cure at 325°F for 60-90 seconds.

Cleanup with Franmar's Green-E-Way, Bean-E-Doo, ColorChange or Saati's PW4. We recommend our recirculating d-ink sinks for the best clean up solution.

*Actual colors may vary slightly from examples shown due to limitations in the printing process*

	qt	gal
XOLB 201 Yellow	\$30	\$76
XOLB 202 Gold	\$32	\$92
XOLB 205 Vegas Gold	\$32	\$96
XOLB 210 Chrome Yellow	\$32	\$96
XOLB 302 Orange	\$30	\$89
XOLB 401 Scarlet	\$32	\$90
XOLB 402 Dark Cardinal	\$30	\$77
XOLB 403 Fluorescent Pink	\$36	\$100
XOLB 405 Blaze Red	\$32	\$102
XOLB 408 Brite Red	\$32	\$92
XOLB 453 Fuchsia	\$36	\$125
XOLB 501 Sky Blue	\$30	\$60
XOLB 502 Columbia Blue	\$30	\$74
XOLB 503 Royal Blue	\$30	\$71
XOLB 504 Navy Blue	\$30	\$60
XOLB 505 Opaque Process Blue	\$32	\$63
XOLB 506 Ultramarine Blue	\$32	\$86
XOLB 601 Dark Maroon	\$30	\$67
XOLB 602 Purple	\$30	\$68
XOLB 607 Maroon	\$30	\$74
XOLB 701 Grass Green	\$30	\$73
XOLB 703 Kelly Green	\$30	\$73
XOLB 704 Turquoise	\$30	\$66
XOLB 705 Lime Green	\$32	\$89
XOLB 710 Forest Green	\$30	\$68
XOLB 801 Tan Flesh	\$30	\$60
XOLB 803 Rust (Texas Orange)	\$30	\$71
XOLB 805 Medium Brown	\$30	\$60
XOLB 902 Grey	\$30	\$60
XOLB 911 Jet Black	\$30	\$60



**WOW** is a very high opacity plastisol ink line designed specifically for Wet-On-Wet printing. It is ideal for high volume print jobs. WOW inks will not buildup on succeeding screens, allowing for longer press runs with fewer interruptions. These inks are bright, clean, and opaque, containing brilliant colors that last for thousands of prints. No buildup means no screen blockage, fewer misprints, and less cleaning.

	Gallon
WOW 2010 Yellow	\$78
WOW 2020 Gold	\$93
WOW 2050 Vegas Gold	\$105
WOW 2100 ChromeYellow	\$96
WOW 3020 Orange	\$87
WOW 4010 Scarlet	\$92
WOW 4020 Cardinal	\$79
WOW 4030 Fluorescent Pink	\$73
WOW 4080 Bright Red	\$96
WOW 4105 Star Magenta	\$93
WOW 5020 Columbia Blue	\$74
WOW 5030 Royal Blue	\$73
WOW 5040 Navy Blue	\$60
WOW 5050 Opaque Process Blue	\$60
WOW 5060 Ultramarine Blue	\$88
WOW 6020 Purple	\$66
WOW 6101 All Star Purple	\$120
WOW 7010 Grass Green	\$80
WOW 7030 Kelly Green	\$74
WOW 7050 Lime Green	\$94
WOW 7100 Forest Green	\$68
WOW 8050 Medium Brown	\$60
WOW 8101 Star Spice Brown	\$60
WOW 9010 Black	\$60
WOW 9020 Grey	\$60

## White Inks

QCM makes the world's best phthalate free plastisol white inks. All of our inks use high levels of white pigment rather than relying on cheap puff agents to increase opacity. As a consequence our inks provide a superb flat under base for multicolor printing. QCM also mills all of its white ink. This provides extreme pigment dispersion and fine pigment particle sizes providing exceptional opacity and fine detail resolution.

### XOLB 159 Glacier White Plus

A soft, creamy consistency that is very easy to print, but also has very high opacity. It is excellent for printing on most substrates, such as 50/50 cotton polyester blend, 100% cotton and fleece fabrics. Glacier Plus White is soft, creamy and easy to print. It has excellent opacity, good flash times and that incredible "whiteness." It also holds dot and fine detail that puts its rivals to shame. It exhibits excellent low-bleed qualities.

**quart \$34    gallon \$87    5gallon \$369**

### PERM 170 Perma White

Specifically formulated to combat the ever-present bleed problem experienced by those who print on polyester and polyester blended materials. Perma-White exhibits a unique blend of printability, opacity and bleed resistance. The cured finish is a smooth, matte surface. Perma-White has excellent mat characteristics. Perma-White contains bleaching agents to neutralize dye migration. Screen mesh in the 60-110tpi.

**quart \$40    gallon \$99    5gallon \$443**

### ATP101 Athletic White

TP inks are designed specifically for athletic uniforms, athletic bag printing, and difficult to print-on fabrics. This ink may be printed thick for athletic lettering and transfers. ATP has excellent, low bleed characteristics and is recommended for use on nylon and polyester materials.

**quart \$34    gallon \$78**

## Ink Scoop



Heavy duty ink scoop for mixing inks, applying inks to screens and scraping off excess ink from screens.

<b>Ink Scoop</b>	<b>\$2</b>
------------------	------------



## Metallic Inks

MTL "Precious Metal" Inks are bright, opaque, metallic plastisol screen printing inks. Add pop to your design as either an accent or as a color replacement to jazz up an old design. MTL inks print well through screen meshes in the range of 86-110tpi.

	Quart	Gallon
 MTL204 Sparkling Gold .....	\$59	\$119
 MTL220 Metallic Bright Gold .....	\$42	\$85
 MTL902 Sparkling Silver .....	\$59	\$119
 MTL903 Platinum .....	\$44	\$89





## Glitter Inks

Glitter Inks are made with QCMs high performance clear glitter base to result in easy printing and high brightness. The particle size allows for good printing through 40tpi. The Cosmic Crystal particles are mixed into a clear base which makes it best suited for printing over the top of other colors.

	Quart	Gallon
 GL202 Gold Glitter .....	\$65	\$130
 GL212 Cosmic Crystals .....	\$67	\$135
 GL901 Silver Glitter .....	\$65	\$130

## 4 Color Process Inks

QCM Four Color Process Inks are superior quality transparent plastisol formulated to achieve the most accurate 4 color process reproductions. For best results, print on white garments, cotton or cotton polyester blends of a tight weave. Open weave garments give a washed out appearance with process printing. Print through mesh counts from 300-380tpi. The recommended mesh for process printing is 355tpi.

	Quart	Gallon
 WOW219 Process Yellow .....	\$34	\$70
 WOW492 Process Magenta .....	\$34	\$70
 WOW523 Process Cyan .....	\$40	\$101
 WOW920 Process Black .....	\$30	\$68



## Glow-In-The-Dark & Reflective Inks

LFP-1007 Glow ink contains maximum levels of phosphorescent pigments that store light energy when exposed to a natural or artificial light source.

	Pint	Quart	Gallon
 LFP1007 Glow .....	\$53	\$93	\$1860
 LFP1041 Reflective .....	\$75	\$150	\$315

## Fluorescent Semi-Opaque Inks

Being both fluorescent and semi-opaque, AP Semi-Opaque Fluorescent inks produce beautiful, even, bright prints. While opaque enough to be printed without the need of an underbase on light and medium grain garments, it is still recommended to print an underbase white on dark colored fabrics

	Quart	Gallon
 AP244 Neon Opaque Yellow .....	\$59	\$118
 AP444 Neon Opaque Pink .....	\$58	\$117
 AP744 Neon Opaque Green .....	\$59	\$119
 QMX3007 Blaze Orange .....	\$63	\$127
 QM4016 Rocket Red .....	\$62	\$125

## Quickmatch Pantone® Color System



QMX is the world's most accurate and easiest to use Pantone® licensed mixing system for plastisol textile inks. The QMX system consists of 12 phthalate free colored inks, a phthalate free transparent base and a phthalate free white base, which can be mixed to create over 1,000 standard colors. QMX is Pantone® licensed and has been approved by major designer labels.

QMX enables textile printers to mix consistently accurate colors in batches of any size to meet the needs of specific print jobs. QMX saves money and increases print shop efficiency by eliminating the delays and overheads associated with having to order and stock a wide inventory of pre-mixed colored inks. QMX does away with messy pigment powders and old-fashioned color concentrates that do not mix properly.

The basic QMX system can be extended to also mix vivid fluorescent colors and metallics by simply substituting inks from our QMX Plus line.

The QMX Plus line consists of 7 fluorescent colored inks, a sparkling silver base and an opaque base, which can be ordered as a kit or individually.

Quickmatch System Gallon Size .....	\$725
Quickmatch System Quart Size .....	\$415

Color	Quart	Gallon
QMX 1030 Clear Base .....	\$30	\$58
QMX 1130 White Base .....	\$32	\$74
QMX 2001 Yellow .....	\$50	\$105
QMX 3003 Orange .....	\$56	\$112
QMX 4032 Red Yellow Shade .....	\$62	\$125
QMX 4035 Red Blue Shade .....	\$59	\$119
QMX 5001 Blue Red Shade .....	\$59	\$118
QMX 5002 Blue Green Shade .....	\$51	\$103
QMX 5004 Blue Ultramarine .....	\$44	\$88
QMX 6002 Clean Violet .....	\$49	\$99
QMX 6003 Durable Violet .....	\$75	\$151
QMX 6018 Magenta .....	\$61	\$123
QMX 7002 Green .....	\$61	\$123
QMX 9001 Black .....	\$34	\$65

## PANTONE® COLORS

Need a custom mixed Pantone® color?  
We can mix it for you.

PANTONE COLOR .....	¾ Quart	¾ Gallon
	\$48	\$95

## Softee Base

WOW-1015 Softee Base is a super soft, buildup free mixing base designed specifically for wet-on-wet printing where a soft print finish is desired. Softee Base, when mixed with other plastisol inks, will produce an extremely soft print. Ideal for high volume print jobs, it will not buildup on succeeding screens, allowing for longer press runs with fewer interruptions. WOW-1015 Softee Base dramatically improves the wet-on-wet printability of ink systems that will not print wet-on-wet. Recommended to revive old or cakey inks.

It is recommended to add up to 75% WOW-1015 Softee Base to your desired ink colors. Test print and cure the mixed ink, checking for desired softness of print. If a softer hand is needed, add up to a total of 90% WOW-1015 to your ink. If pigmenting your inks, add up to 30% pigment by weight. After mixing, the finished inks print well through screen meshes in the range of 86-385. The higher the mesh, the softer the finished print. For lower tension screens, adjust off contact accordingly. Recommend a 70 or 80 durometer sharp squeegee.

	Quart	Gallon	5-Gallon
<b>WOW-1015 Softee Base</b>	\$25	\$52	\$235

## Curable Reducer

P-5011 Curable Reducer is a 100% solids plastisol reducer that can be added to any plastisol product to reduce the viscosity of the ink. P-5011 curable reducer is fully curable by itself. QCM recommends a starting point of mixing in 2% - 5% P-5011 (by weight) to the ink you need to thin out. Depending on the ink, you may add up to 10% before affecting the inks opacity; however, it is always recommended that you do a test print to check opacity after any clear ink is added. Tight screens are strongly recommended. If using lower tension screens adjust off contact accordingly. Recommend a 70 durometer sharp squeegee for best deposit.

	Quart	Gallon	5-Gallon
<b>P-5011 Curable Reducer</b>	\$22	\$46	\$200

## Nylon Bonding Agent

MF-66 Nylon Bonding Agent is an additive to plastisol inks for printing on shell or treated Nylon substrates. These substrates generally appear in the form of waterproofed jackets. Since each jacket manufacturer determines the type and amount of waterproofing chemical they apply to their garments, it is recommended that each batch of garments be tested prior to production. Add MF-66 to un-modified plastisol ink at a ratio of 10-12% by weight (1 Part MF-66 to 7 Parts of Ink). The mix is critical to success. Mix thoroughly. The addition of MF-66 generally "thins" the ink. Nylon substrates do not absorb ink. Rather, it lays on the surface.

	Pint	Quart	Gallon
<b>MF-66 Nylon Bonding Agent</b>	\$50	\$70	NA

## Puff Additive

MF-167 is a concentrated plastisol printing ink which has been formulated so that when added to a finished ink, it produces a high "Puff" effect on a variety of fabrics. These finished inks print smooth and have an even rise for a clean, sharp print. Add at 5-15% by weight and test for desired puff effect. Depending on mesh count used and print technique, you may add up to 20% by weight. Puff inks are generally printed through coarse meshes, 60-86 TPI (23-31 TPCm) and as high as 110-160 TPI (43-62 TPCm). Tight screens are recommended. This allows you to lay the ink on the surface of the shirt using minimal squeegee pressure and minimal off contact.

	Quart	Gallon
<b>MF-167 Puff Additive</b>	\$70	\$150

## Stretch Base

STR-100 is a ready-to-use plastisol ink that is used to improve strength and elongation of standard plastisol inks. It can also be pigmented or used as a clear overprint. Recommended mixing percentages are: Colors: 70% Color – 30% STR 100 White: 55% White – 45% STR-100 A higher level of STR-100 is possible, but can create a loss of opacity in your colors and whites. Recommend 86-110 TPI (32-43 TPCm) for best results. Tight screens are recommended. A thicker deposit is better. The thicker the deposit, the longer the print will last. In lab testing, we have found that a print-flash-print held up the longest in comparison tests

	Quart	Gallon
<b>STR-100 Stretch Base</b>	NA	\$85

## Empty Ink Containers



	Pint	Quart	Gallon
<b>Empty Containers</b>	\$3.50	\$4	\$5

## Ink Scoop

Heavy duty ink scoop for mixing inks, applying inks to screens and scrapping off excess ink from screens.



<b>Ink Scoop</b>	\$2
------------------	-----



Permaset Aqua is a revolution in textile screen printing inks. Based on carefully selected pigments and the latest advances in polymer technology, Permaset Aqua delivers pure color, a superior soft handle and excellent durability in an easy to use ink that is environmentally friendly. Permaset Aqua includes both regular (transparent) and SuperCover (opaque) ranges together with 4 Metallic and 4 Process colors (CMYK) and a range of ancillaries. Each range includes 8 "Glow" fluorescent colors and also a Print Paste.

SuperCover colors are specifically designed to provide excellent coverage and opacity on dark fabrics. With 45 years of manufacturing experience, Permaset is recognized by both the fine artist and professional printing trade as the premier product amongst textile screen printing inks. Our heritage of innovation continues with a dynamic re engineering of our successful line of quality fabric inks. Building on a record of industry leading products, Permaset Aqua breaks new ground; a water based ink that offers superior performance and eliminates the historical trade-off between printability performance on the screen and post-production performance of the finished garment including user comfort and safety and environmental sustainability.

This 100% solvent free range is environmentally friendly. The pigments provide intense, vibrant color, rich in coverage and deliver exceptional color yield. The unique polymer binding the pigment to the fabric delivers exceptionally soft handle and yet shows excellent resistance to damage by rub, wash and dry-cleaning, all without the need for additives. The ink colors have light-fastness ratings of at least 6/8 on the Blue Wool scale - in fact most of the colors received ratings of 8/8.

Permaset Aqua breaks the rules, performing at a higher standard with enhanced screen stability and extended open time to produce cleaner results, longer. Ideal for use on a full range of fabrics including Cotton, Polyester, Silk and most synthetics. Permaset Aqua is also low in odor and can easily be cleaned up with water. A first-rate innovation, Permaset Aqua is the perfect, versatile textile ink solution; it provides a technically sound foundation while you provide the creativity and contribute to a safer environment.

Permaset Aqua Process Colors have granted approval by the Soil Association in the UK, having successfully met the requirements of the Global Organic Textiles Standards (GOTS) for non-organic chemical inputs for use in organic textile processing.

The products covered by the Approval include Permaset Aqua Process Cyan, Permaset Aqua Process Magenta, Permaset Aqua Process Yellow and Permaset Aqua Process Black.

**CHECK OUR WEBSITE FOR A SOLVENT FREE RINTING SOLUTION:**



Color	Quart	Gallon
SuperCover Black	\$34	\$107
SuperCover White	\$40	\$123
SuperCover Mid Yellow	\$40	\$123
SuperCover Yellow	\$40	\$123
SuperCover Orange	\$40	\$123
SuperCover Scarlet	\$40	\$123
SuperCover Mid Red	\$40	\$123
SuperCover Rose	\$40	\$123
SuperCover Purple	\$40	\$123
SuperCover Ultra Blue	\$40	\$123
SuperCover Blue	\$40	\$123
SuperCover Light Blue	\$40	\$123
SuperCover Mid Green	\$40	\$123
SuperCover Green	\$40	\$123
SuperCover Print Paste	\$25	\$77
SuperCover Glow Blue	\$51	\$157
SuperCover Glow Green	\$51	\$157
SuperCover Glow Orange	\$51	\$157
SuperCover Glow Pink	\$51	\$157
SuperCover Glow Red	\$51	\$157
SuperCover Glow Yellow	\$51	\$157
SuperCover Glow Magenta	\$51	\$157
SuperCover Glow Violet	\$51	\$157
Standard Glow Blue	\$33	\$101
Standard Glow Green	\$33	\$101
Standard Glow Magenta	\$33	\$101
Standard Glow Orange	\$33	\$101
Standard Glow Pink	\$33	\$101
Standard Glow Red	\$33	\$101
Standard Glow Violet	\$33	\$101
Standard Glow Yellow	\$33	\$101
Metallic Bright Silver	\$50	\$151
Metallic Gold Luster	\$62	\$188
Metallic Pearl White	\$50	\$151
Metallic Copper	\$62	\$188
Retarder	\$28	\$51



## Jacquard Professional Inks

are professional quality and permanent on most surfaces including: fabric, paper, plastic, vinyl, leather, metal and more! These inks break new ground with an appreciably longer open time in the screen in comparison to other water-based products making them perfect for small production runs. They screen beautifully with excellent resolution. Jacquard Professional Screen Printing Inks are particularly well suited for commercial applications and will not wrinkle paper when screening art prints. These inks are archival and lightfast. Cleanup is easy with just soap and water. Fabrics must be heat set for permanence and wash-fastness. Once set, the inks are fully washable and dry-cleanable on all natural and synthetic fabrics.

### Basic Usage

Thin as desired with water. Prewash fabric before printing if necessary to remove sizing. A conveyor dryer is recommend to fully cure waterbased inks. You can use a flash cure unit or a heat press. To heat set on fabric using a household iron on reverse side for 1 minute at appropriate fabric setting. Keep iron moving. Use standard fabric setting for conveyors or commercial dryers. Always test samples prior to production runs.

### Mesh

Use mono filament polyester meshes. Suggested sizes: Opaque Colors use 110-160 mesh, Metallic Colors use 86-110 mesh and Regular Colors use 156-225mesh.

### Stencils

We recommend the use of our Murakami Aquasol HV emulsion, or the use of A&B Hardener with our Murakami SP9500 emulsion.

### Curing

Jacquard Screen Inks are self-curing on most surfaces no heat needed. For maximum wash fastness on textiles, heat at 250-300 degrees Fahrenheit for one to two minutes. Lower temperature, for longer periods of time may be required for some synthetic fibers.

### Clean Up

Clean up with warm water. To remove spots where the ink my have dried in the screen try Franmar's Wash-A-Way or Saati's IR11.

Color	8oz	16oz	Gallon
101 Yellow.....	\$11	\$18	\$85
102 Golden Yellow .....	\$11	\$18	\$85
103 Orange.....	\$11	\$18	\$85
104 Red .....	\$11	\$18	\$85
107 Magenta .....	\$11	\$18	\$85
108 Violet .....	\$11	\$18	\$85
109 Sky Blue.....	\$11	\$18	\$85
111 Blue .....	\$11	\$18	\$85
112 Navy .....	\$11	\$18	\$85
113 Turquoise .....	\$11	\$18	\$85
114 Yellow Green .....	\$11	\$18	\$85
115 Green .....	\$11	\$18	\$85
117 Black.....	\$11	\$18	\$85
118 White .....	\$11	\$18	\$85
119 Super Opaque White.....	\$11	\$18	\$85
120 Gold .....	\$11	\$18	\$85
121 Solar Gold.....	\$11	\$18	\$85
122 Silver .....	\$11	\$18	\$85
123 Copper.....	\$11	\$18	\$85
140 Process Yellow .....	\$11	\$18	\$85
141 Process Magenta .....	\$11	\$18	\$85
142 Process Cyan .....	\$11	\$18	\$85
100 Extender .....	\$11	\$18	\$85



## Wash-A-Way



Wash-Away is an Air Dry Ink Cleaner. Works with solvent, vinyl, PVC, UV and waterbased inks. Wash-Away is made with Franmar's exclusive SoySpirit system. Wash-Away is 100% biodegradable.

Wash-A-Way - Quart	\$19
Wash-A-Way - Gallon	\$56

## Saati IR11



Saati IR11 is a great plastisol, UV and Solvent based ink remover. Apply the product to the screen. Using one of our red scrub pads on both sides of the screen until the ink is liquid. Starting from the bottom, rinse ink residue from the screen.

Saati IR11 - Quart	\$20
Saati IR11 - Gallon	\$640
Red Scrub Pad	\$2
Scrub Pad Handle	\$2



## Bean-E-Doo

Bean-e-doo removes plastisol ink, tar, asphalt, gum, engine oil, crayon, hydrocarbons, permanent marker, adhesive tapes, wax, decals, graffiti, paint, rubber compounds, polystyrene, Styrofoam and more. Bean-e-doo Contains no bleach, ammonia or harsh detergents.

Bean-E-Doo - Quart	\$15
Bean-E-Doo - Gallon	\$35
Bean-E-Doo - 5 Gallon	\$153



## Green-E-Way

Greenway is an organic plastisol ink cleaner made from Soybeans Greenway is non-caustic and contains no petroleum based or hazardous ingredients. Greenway replaces mineral spirits, no dangerous vapors, fresh aroma. Not as oily as BEAN-e-doo

Green-E-Way - Quart	\$19
Green-E-Way - Gallon	\$68
Green-E-Way - 5 Gallon	\$325



## Green Again

Franmar's Green Again is the newest innovation in plastisol ink removing technology. This "upcycled" formula was designed with the environment and human health in mind, to help promote a safe workplace. 100% biodegradable and safe for drains.

Green Again - Quart	\$15
Green Again - Gallon	\$35



## Color Change

Color Change is an emulsion safe screen wash. Color Change is designed for on-press color changes and screen opening. Color Change can also be used to clean screens offpress for storage or prior to reclaiming. Removes textile inks from screens and opens screen mesh.

Color Change - Quart	\$22
Color Change - Gallon	\$76



## Wash-A-Way

Wash-A-Way is an Air Dry Ink Cleaner. Works with solvent, vinyl, PVC, UV and waterbased inks. Wash-A-Way is made with Franmar's exclusive SoySpirit system. Wash-A-Way is 100% biodegradable.

Wash-A-Way - Quart	\$19
Wash-A-Way - Gallon	\$56



## Saati PW4

Saati PW4 Press Wash is an on-press plastisol ink remover. PW4 Press Wash is a liquid chemical recommended for textile ink removal while on press. PW4 has great evaporation properties.

Saati PW4 - Quart	\$18
Saati PW4 - Gallon	\$52
Saati PW4 - 5 Gallon	\$200



## Saati IR11

Saati IR11 is a great plastisol, UV and Solvent based ink remover. Apply the product to the screen. Use a non-abrasive brush to scrub both sides of the screen until the ink is liquid. Starting from the bottom, rinse ink residue from the screen.

Saati IR11 - Quart	\$20
Saati IR11 - Gallon	\$64
Saati IR11 - 5 Gallon	\$220

## De-Ink Sinks

The DS and D2 sinks are self-contained, environmentally friendly welded polypropylene solvent recirculation systems designed specifically as an ink removal station. Internal dual tanks isolate and trap ink sludge and separate it from the solvent, which is then filtered back into the system using a footswitch driven pump. This allows your biodegradable cleaners to be recirculated and re-used in a system that requires no additional plumbing.



Model D2 shown

Model D2 measures 36"wide, 24"deep, 69" Tall  
Model DS measures 36"wide, 24"deep, 74" Tall

DeInk Sink - Model D2	\$1330
DeInk Sink - Model DS	\$1896
Replacement Filter	\$9
Squeegee Rack	\$42





## d-Grease

d-Grease removes oil and solvent residues, dirt and dust from all new and used fabrics. d-Grease is effective in hard water and rinses clean with hot and cold water. It is non-caustic and will not harm frames or fabrics. Use d-Grease as a first step in stencil making. It will greatly reduce the risk of stencil making failure. d-Grease will extend stencil life and help eliminate pin holing.

<b>d-Grease - Quart</b>	\$9
<b>d-Grease - Gallon</b>	\$18
<b>d-Grease - 5 Gallon</b>	\$75



## d-Haze

d-HAZE & d-Haze Gel removes ghost images and degreases all in one step. Works on screen printing inks, adhesives, paints, vinyls and film. When used in conjunction with a solvent resistant emulsion and Bean-E-Doo, Ickee Sticky

Unstuck, d-HAZE eliminates the need to use caustic haze removers. d-Haze Gel does all the same stuff but it has a gelling agent added for more control, less mess and waste.

<b>d-Haze - Quart</b>	\$19
<b>d-Haze - Gallon</b>	\$60
<b>d-Haze - 5 Gallon</b>	\$276
<b>d-Haze Gel - Quart</b>	\$20
<b>d-Haze Gel - Gallon</b>	\$63



## Electric Pressure Washer

**1500 PSI 1.3 GPM**

Includes a Variable Spray Nozzle which adjusts from a pencil point spray to a wide fan spray pattern for the toughest cleaning tasks. On-board Detergent Tank for effortless detergent application. Ergonomically Designed Spray Gun with 20ft High Pressure Hose and a 35ft Power Cord.

<b>Electric Pressure Washer</b>	\$139.95
---------------------------------	----------



## ScrubPads

Our White nonabsorbent scrubpad is gentle. Cleans without doing damage to the emulsion, or absorbing solvent. Red Pads are more abrasive than the white ones. Our scrubpad handle is reusable.

<b>Scrub Pad - Red or White</b>	\$2
<b>Dozen Scrubpads - Red or White</b>	\$20
<b>Reusable Handle</b>	\$2

## Saati Degreaser / Haze Remover



Saati Remove HR6 is a degreaser and haze remover. Removes grease, dirt, dust, stains, haze, ghost images. Contains Pumice for abrading the mesh making it easier for emulsion to stick to the mesh. Pink semi viscous paste with a mild cherry scent.

<b>Saati - Remove HR6 Quart</b>	\$18
<b>Saati - Remove HR6 Gallon</b>	\$55



## Remove ER2

Saati ER2 is a concentrated version of our famous EZ Strip, an emulsion/stencil remover great for use in dip tanks. Simply mix 1 quart of ER2 Emulsion Remover to your empty dip tank and add 20 gallons of tap water. More or less water may be added for your desired strength. For the non concentrate formula see our EZ Strip on page 9.

<b>Saati - Remove ER2 concentrate Quart</b>	\$115
<b>Saati - Remove ER2 concentrate 1½ Gallon</b>	\$475



## One-Step Clear

One Step Clear™ reduces the current two step screen reclaiming process into one simple, easy step. No longer is it necessary to first wash plastisol ink off the screen and then use a reclaiming solution to remove the emulsion. With One Step Clear™ ink and emulsion is removed in one step that takes less than 5 minutes. One

Step Clear™ is a non-toxic solution that saves times and money.

<b>One-Step Clear - 5 Gallon</b> neutralizer included	\$260
---	-------



## Crazy Clean Wipes

Gentle citrus-scented towels. Strong enough to cut through tar, grease, wax, ink, paint, lubricants and adhesives. Waterless cleaner fortified with an emollient and natural oils. The perfect product when you don't have access to soap and water. Quick and easy to use, just wipe and discard.

<b>Crazy Clean Wipes</b>	\$18
<b>Crazy Clean Wipes - case of 4</b>	\$65

## BLACKLINE<sub>mfg</sub>

### Washout Sinks and Filtration Systems



#### Filter One - Model F1

An all-in-one filtration system that utilizes a dual tank system to trap ink and emulsion solids and filters them before they reach the outflow. This welded polypro system measures 29"x15.25"x17" and attaches to your present plumbing. It's extremely easy to operate and fits neatly under any of Blackline's washout booths, making a cost effective filtering system. When used in conjunction with biodegradable cleaners, discharge from the system is drain and septic system safe.



<b>Filter One</b> - 29x15.25x17	\$1345
<b>Replacement Filter</b> - 5, 20 or 75 micron	\$9
<b>Replacement Filter Pad</b> - 2 pack	\$18



#### SuperTrap

Traps and filter ink sludge and recirculates cleaning solvents to save you money. Features a 15 gallon capacity, and fits under any of Blackline's washout booths. Comes complete with pump, filter cartridge, filter, foot switch, hose and spray nozzle.

<b>SuperTrap</b>	\$1015
<b>Replacement Filter</b> - 5, 20 or 75 micron	\$9
<b>Replacement Filter Pad</b> - 2 pack	\$18

### Dip Tanks

Blackline Brand Dip Tanks for use with Franmar's One-Step Clear or Saati's ER2 (page 17). Fill with chemical and submerge your screens, the screen hold down device is included. A spigot is installed on the bottom for cleanout. Small tank includes a stand. Large tank measures 10" wide x 27" tall x 37" deep. Small tank measures 8" wide x 24" tall x 28" deep.



Large Tank



Small Tank

<b>Large Dip Tank</b>	\$445
<b>Small Dip Tank</b>	\$410



#### KDL and KD-XL

Blackline's KDL and KD-XL are great entry level washout booths. Full size and made of 1/4-inch, semi-transparent natural polypropylene, strong, durable and built to give you years of service. Both can shipped via UPS ground. Features built-in screen supports and a perforated drain. Both can hold a standard 23"x 31" screen and come standard with two screen supports. And because the KDL and KD-XL are semi-transparent, backlighting can be added by the customer if so desired.

<b>KDL</b> - 32x24x64	\$450
<b>KD-XL</b> - 36x24x69	\$552
<b>Squeegee Rack</b>	\$42



#### WB48 and WB60

If you're looking for a strong, durable washout booth at an affordable price, look no further than Blackline's WB. The WB is an open-top booth constructed of welded polypropylene and comes equipped with many of the features found on our deluxe washout, including two, four-foot backlight strips, a semi-transparent back, built-in screen supports and a perforated drain.

<b>WB48</b> - 48x24x74	\$1270
<b>WB60</b> - 60x24x74	\$1375
<b>Upgrade to 30" depth</b>	\$250
<b>Squeegee Rack</b>	\$42



#### WDX

Constructed of welded polypropylene, the WDX series (WDX36 shown) washouts have a ceiling and splash guards to help minimize spray while cleaning. The semi-transparent polypro back panel is fully backlit for easy viewing. These units have built-in screen supports that help keep screens in place while cleaning. A perforated drain prevents tape from clogging the waste system.

<b>WDX36</b> - 36x24x74	\$1136
<b>WDX48</b> - 48x24x74	\$1670
<b>WDX60</b> - 60x24x74	\$1900
<b>WDX72</b> - 72x24x74	\$2280
<b>Squeegee Rack</b>	\$42

## PMI Split Tape



Blue areas on the tape contain no adhesive to keep your frames clean and free of adhesive residue. Tape will not break, tear or shred, saves time in reclaim. No release liner to remove, makes applying quick and easy. Eliminates need for costly labor and solvents to clean frames. Economical to use.

Width	1 roll	Case
2" x 60yards	\$5.50	\$180 - 36 rolls
3" x 60yards	\$8.60	\$195 - 24 rolls
4" x 60yards	\$10.00	\$175 - 18 rolls

## Blue 2000 Tape



Blue, durable, conformable, self wound polyethylene with aggressive acrylic adhesive. Applies to both sides of screen, forming an adhesive bond resisting attack by inks and cleaning solvents. Clean removal in one piece from wood frames and screen with no adhesive residue. Bonds very well to aluminum frames.

Width	1 roll	6 rolls	Case
2"	\$5	\$29	\$150 - 36 rolls
3"	\$6.75	\$40	\$162 - 24 rolls

## Clear Tape



Standard clear packing tape. With acrylic adhesive. 2"x100 yards. Does not remove as easy as Blue 2000 and PMI Split tapes.

Width	1 roll	Case of 36
2" x 100yards	\$2.50	\$75

# Sprayway®

## 384 - Super Flash

Pressure sensitive formula specially designed for the screen printing shop. Textile screen printing pallet adhesive is ideal for flash curing. Perfect for applications and temperatures required to cure plastisol inks. Will not transfer to fabric or allow shifting of material.



	1 can	Case of 12
<b>Sprayway 384</b>	\$7.50	\$74

## 382 - Mist-Type

Economy Pallet Adhesive. Improved pressure-sensitive formula offers more uses per application, less downtime. Repositionable yet strong. Holds tack for several screen passes. Bonds easily to a variety of materials without transferring to the fabric.



	1 can	Case of 12
<b>Sprayway 382</b>	\$7	\$70

## 957 - Screen Opener

Sprayway 957 Instant Screen Opener opens dried-up areas in screens. Compatible with all types of screenprinting inks and does not leave behind film or residue. For use with direct or indirect emulsions, stencil or laquer-proof knife cut films only.



	1 can	Case of 12
<b>Sprayway 957</b>	\$7	\$72

## 383 - Webbing Adhesive

This clear, pressure-sensitive webbing adhesive does not stain, offers the user quick tack, has low soak in and will not wrinkle the work while in use. 383 offers either a permanent bond or a repositionable one. Simply spray the pallet lightly. Specifically designed for fleece and other high density garments. Packaged twelve 20 fluid oz. cans



	1 can	Case of 12
<b>Sprayway 383</b>	\$7	\$72

## 085 - General Purpose Web Adhesive

High performance web adhesive used for both temporary and permanent bonding applications. Waterproof, flexible, transparent, and non-staining. Ideal for porous or non-porous substrates. Contains no chlorinated solvents.



	1 can	Case of 12
<b>Sprayway 085</b>	\$7.00	\$70

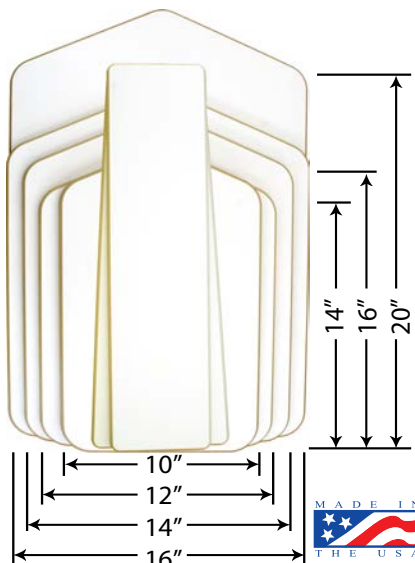
**Proofing Squares**

Proofing Squares, Pallon Squares or Test Squares. They have many names but they're all the same, a great inexpensive product for registering and proofing your prints before you go to a garment. Ours are 14"x18" available in black or white. Available in packs of 50 black or 50 white.



<b>Black 50 count</b>	\$16
<b>White 50 count</b>	\$16

**Shirtboard/Platens**



We manufacture our own platens in all the standard sizes the industry uses. Highly resistant to warpage and a special facing to better withstand the heat of a flash cure unit. The facing material is very easy to clean and virtually impervious to water and clean-up chemicals. Our Shirtboard Brackets are designed to work with almost all manual press with an arm dimension of 1.5" x 2.5", this includes: Workhorse, Riley Hopkins, and Hopkins BWM plus many others.

<b>10"x14"</b>	\$16
<b>12"x14"</b>	\$18
<b>14"x16"</b>	\$20
<b>16"x16"</b>	\$24
<b>16"x20"</b>	\$28
<b>5"x20" Sleeve</b>	\$20
<b>5"x7"x20" Tapered</b>	\$20
<b>Bracket</b>	\$55

**Platen Paper / Tape**



Keep those shirtboards looking brand new with some platen paper. Cover them up and when you're ready to clean off your lint just peel and replace. High Grade paper with latex pressure sensitive adhesive. Available in 100 yard rolls.



<b>16"x100yards</b>	\$60
<b>18"x100yards</b>	\$65
<b>20"x100yards</b>	\$75
<b>24"x100yards</b>	\$85

**Platen Adhesive**



Tekbond TB-10 is developed specifically for the textile screen printing industry. It affords tremendous hold down for both Tee's and sweats and has a tack time that rivals aerosol solvent based adhesives. Should the adhesive lose its tackiness as a result of lint or fleece build up, it can be quickly re-activated by wiping over with a damp sponge, giving maximum use and minimizing reapplication.



	Quart	Gallon
<b>TB-10</b>	\$16	\$45

**Blockout**



Saati Finish F1 is an economical red blockout filler. Works with solvent, uv and plastisol inks. Reclaim with water.

	Quart	Gallon
<b>Saati Finish S1</b>	\$10	\$28

**Spot Cleaning**



This dependable and durable cleaning gun is designed to handle the strongest of solvents. Metal handle reduces risk of breaking if dropped. Formula TS-3 Designed to be used in any spot cleaning gun, nonflammable Formula TS-3 will remove 100% of cured plastisol inks along with water based, puff and many other ink types from textiles.

<b>Spot Cleaning Gun</b>	\$95
<b>Formula TS-3 Gallon</b>	\$36

**Ickee Stickee Unstuck**



is a Natural Solvent for removing spray adhesive, gum, tar, decals and vinyl lettering, engine oil and grease, permanent marker, adhesive tapes, wax and other Ickee Stickee stuff. Designed for glass, polyvinyl, PVC, enamel paints and most non-porous surfaces.



	Quart	Gallon	5 Gallon
<b>Ickee Stickee</b>	\$20	\$58	\$286

## **Black Body** INFRARED DRYING SYSTEMS®



The Black Body Afford-A-Flash is pre wired with 10' cord and stand with casters, this low cost set-up will satisfy the basic requirements for start-ups or serve as a back up

system. The Afford-A-Flash Series does not have an indicator light or a on/off switch. No accessories or options apply.

<b>Afford-A-Flash LC1600 16"x16"</b>	\$475
<b>Afford-A-Flash LC2200 18"x18"</b>	\$560
<b>Afford-A-Flash Heat Controller</b>	\$224
<b>HC120 Heat Controller</b>	\$230
<b>Heat Controller Bracket</b>	\$18



Black Flash

The Black Flash heaters come pre wired with a 10 foot cord, indicator light and on/off switch. The Black Flash series is a "standard" in the industry for flash curing inks on textiles and other substrates. The heaters can be purchased alone or with stands and other accessories. Turn the Black Flash into an auto flash with the Flash-A-Matic kit. Pricing includes standard floor stand and casters.



Black Flash Auto

<b>BF1-1600s 16"x16"</b>	\$595
<b>BF1-1800s 16"x16"</b>	\$615
<b>BF2-2000s 18"x18"</b>	\$695
<b>BF2-2200s 18"x18"</b>	\$715
<b>BF3-3001s 18"x24"</b>	\$835
<b>BF4-4000s 24"x24"</b>	\$975
<b>Flash Amatic Kit</b>	\$840

## **WORKHORSE** PRODUCTS Screen Printing Systems

### Super SECA Flash cure



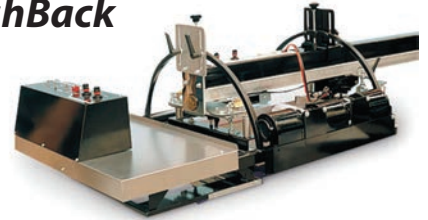
The Super Seca is the most economical and functional flash curing unit in the industry. Keeping with the Workhorse tradition, the Super Seca is built to last with the dependability you need for your print shops needs. Features energy reflectors for enhanced edge curing, quality infrared heat panels and a 10 year warranty.

Price includes standard stand.

- Industry leading 10 year warranty.
- 360° head rotation
- Adjustable height
- Totally portable
- Infrared heat panel
- Energy reflectors for enhanced edge curing
- Sturdy 5 leg base
- 110V or 220V systems
- On the fly timer and stroke changes

<b>Super SECA 16x16</b>	\$545
<b>Super SECA 18x18</b>	\$645
<b>Super SECA 18x24</b>	\$770
<b>Super SECA 24x24</b>	\$875
<b>Auto Rotation Box</b>	\$820
<b>Temperature Control Box</b>	\$220
<b>Caster Set</b>	\$30

### FlashBack



For the first time, printing, flashing and cooling are all performed on the same printhead! After the print stroke, the Workhorse FLASHBACK automatically slides its thin quartz element in between the garment and the screen. The garment is instantly flash dried and then cooled. Compatible with all Javelin model auto presses.

<b>Flashback 16 16x18</b>	\$3525
<b>Flashback 20 20x22</b>	\$4100

### Mini Temp Gun



Make sure you're curing your ink to the right temperature with our MiniTemp Gun. A new way to solve common problems, and small enough to fit in your pocket. The MiniTemp includes a backlit display and a Laser Point to assist in sighting your target. The MiniTemp is also great for auto enthusiasts, home improvement Do-It-Yourselfers, checking HVAC systems and to monitor temperatures around the house and workshop. It's fast, fun and easy to use!

<b>Mini Temp Gun</b>	\$65
----------------------	------

### Scorch Remover **TEKMAR**

New textiles Scorch Remover, instantly removes light to medium scorching from tees and sweats. Simply spray on the scorched area then run the garment back through the dryer. It even works on sun discoloration. Its that simple. No more lost profits due to scorching. Packaged in 16 oz Pump Sprays.



<b>Scorch Remover 16oz</b>	\$16
----------------------------	------



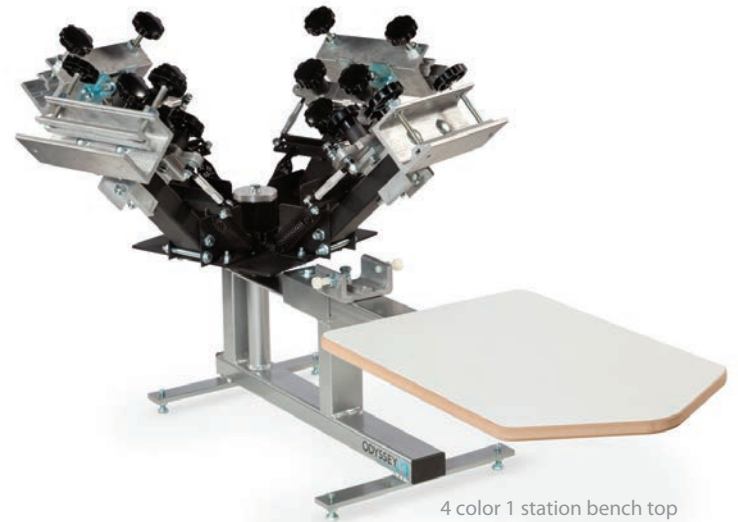
## Odyssey Manual Screen Print Presses

Odyssey manual printers are value priced industrial machines. While this is our "Entry Level" machine, it's unlike any other in its price range. The Odyssey line is ideal for startup operations such as Home Based Businesses, Sporting Good Retailers and Embroidery Companies that want to add a screen printing department. In addition to the rotary load style presses, Odyssey presses are available in economical and specialty table top models as well. With the optional cap, jacket, sign, coozie, sticker, and pocket attachments, this machine is the do it all answer for any small to medium screen printing business.

CHECK OUT [www.WESTARSOLUTIONS.com](http://www.WESTARSOLUTIONS.com) FOR MORE INFO



4 color 4 station press shown

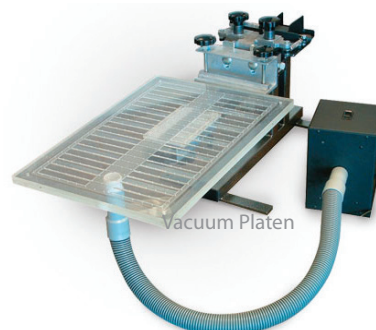


4 color 1 station bench top



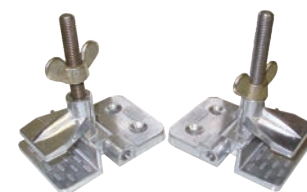
1 color 1 station bench top

<b>Odyssey 1/1 Benchtop Press</b>	\$550
<b>Odyssey 4/1 Benchtop Press</b>	\$1650
<b>Odyssey 4/4 Manual Press</b>	\$2695
<b>Odyssey 6/4 Manual Press</b>	\$3300
<b>Odyssey 6/6 Manual Press</b>	\$3750
<b>Vacuum Platen</b>	\$695
<b>Shirtboard Bracket</b>	\$55
<b>10x14 Shirtboard</b>	\$16
<b>12x14 Shirtboard</b>	\$18
<b>14x16 Shirtboard</b>	\$20
<b>16x16 Shirtboard</b>	\$24
<b>16x20 Shirtboard</b>	\$28
<b>5x20 Sleeve Board</b>	\$20
<b>5x7x20 Tapered Sleeve Board</b>	\$20



Vacuum Platen

### Hinge Clamps



Made of cast steel. Holds all wood or metal screens from 5/8" to 2" profile. Locking action firmly holds screens for positive registration. Provides fast and accurate changeover between jobs.

<b>Hinge Clamps pair of 2</b>	\$32
-------------------------------	------



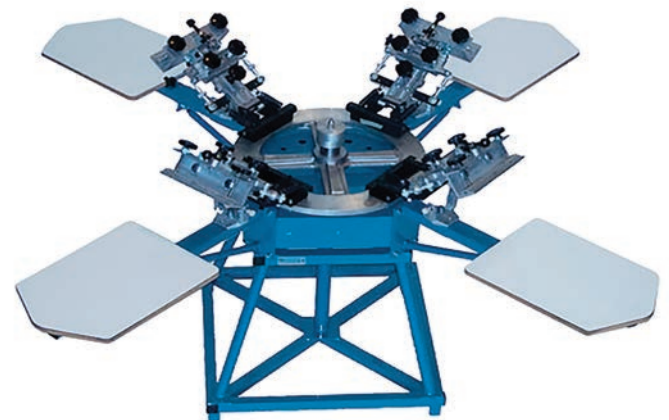
## Mach Series Manual Screen Print Presses

Workhorse mach series presses, the original tool-free adjustment press stands the test of time as professionals' choice for strength, durability, and ease of use. Our unique combination of micro-adjust screen angle, dial-in off-contact and multi-axis pre-leveled print stations make the mach series a must for quality, close-tolerance manual printing. Tool-free adjustments and super responsive micro-registration make them a dream to use. Precision-machined cast aluminum arm strong, durable and light, provides exacting and consistent registration. Micro-adjust screen angle compensates for screen "droop" or "tilt" found in longer screens by micro-adjusting screen angle parallel to board surface. Bearing-aided micro cinch down are supported by a ball bearing ring to counter rotational thrust. This eliminates screen shifting while allowing maximum holding power with minimum effort. Super responsive micro-registration features fine thread rod-ends for the ultimate in responsiveness and virtually zero backlash. Strong warranty, workhorse stand behind our products with one of the strongest 1-year warranties in the business.

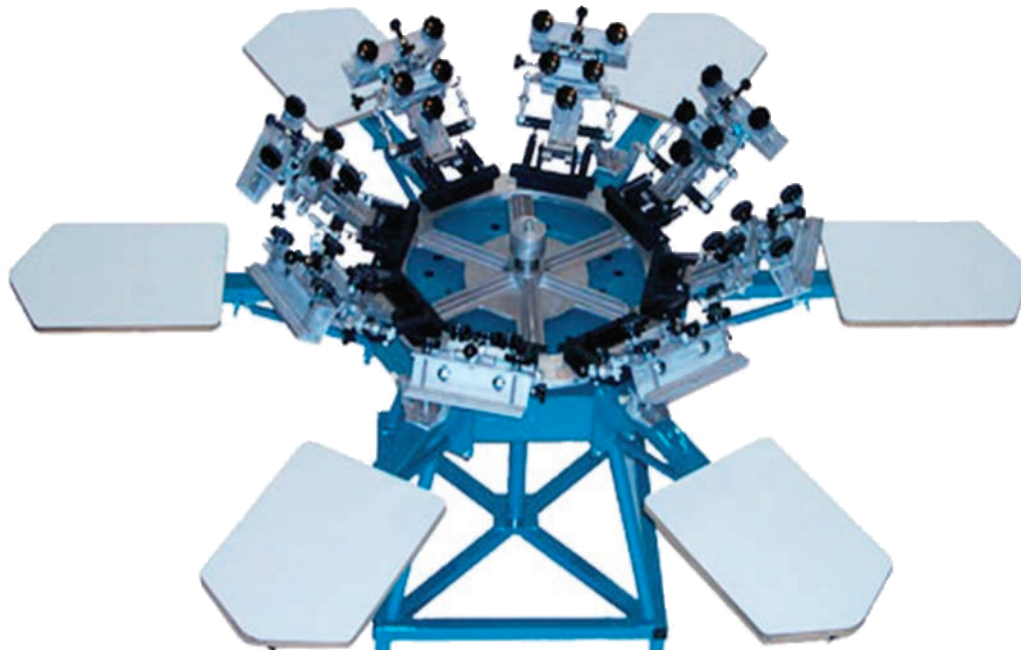
CHECK OUT [www.WESTARSOLUTIONS.com](http://www.WESTARSOLUTIONS.com) FOR MORE INFO



6 color 6 station press shown



4 color 4 station press shown



8 color 6 station press shown

<b>Workhorse 4/4 Press</b>	\$3450
<b>Workhorse 4/4 Press all heads down</b>	\$4000
<b>Workhorse 6/4 Press</b>	\$4400
<b>Workhorse 6/6 Press</b>	\$5200
<b>Workhorse 6/6 Press all heads down</b>	\$5850
<b>Workhorse 8/6 Press</b>	\$5850
<b>Workhorse 8/8 Press</b>	\$6600
<b>Workhorse 8/8 Press all heads down</b>	\$7400
<b>Workhorse 10/8 Press</b>	\$8050
<b>Gripper Jacket Platen</b>	\$475
<b>Vacu Platen</b>	\$600

## Freedom Pneumatic Automatic Textile Printer

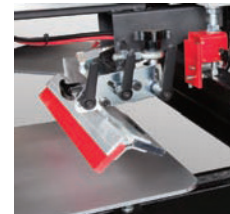
The Freedom is the epitome of simple as it relates to screen printing. It's simple to set up, simple to operate, and simple to maintain. That said, The Freedom does not limit you to simple designs or small jobs. This machine turns any manual press operator into a mass producing printer. Freedom's fast indexing speed, simple to use controls and precise micro registration ensure that setups are as fast and easy as with your manual press. Add our patented FlashBack to the Freedom and Workhorse has re-written the book on affordable high production while keeping it simple. Automating your manual shop gives you freedom from: long hours at the press, aching elbows and wrists, late deliveries, high labor costs, and the list goes on.

## JAVELIN PRO Pneumatic Textile Printer

The Javelin Pro offers durable construction, user-friendly set-up, an advanced controller, and with high index speeds, it is the workhorse of automatic printers. Combined with our patented FlashBack, our presses are the only machines in the industry that can print and flash on all print heads without sacrificing a color. Javelin's print heads and drive systems are smooth and dependable, enabling you to take on even the most demanding.



Javelin Pro JAV-810 shown



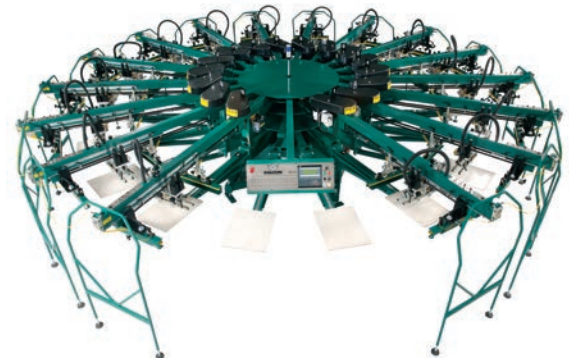
<b>Freedom 6 color 8 station</b>	<i>call for best pricing</i>
<b>Javelin 4 color 8 station</b>	<i>call for best pricing</i>
<b>Javelin 6 color 8 station</b>	<i>call for best pricing</i>
<b>Javelin 6 color 10 station</b>	<i>call for best pricing</i>
<b>Javelin 8 color 10 station</b>	<i>call for best pricing</i>
<b>Javelin 8 color 12 station</b>	<i>call for best pricing</i>
<b>Javelin 10 color 12 station</b>	<i>call for best pricing</i>

## FALCON "M" Servo/Electric Series

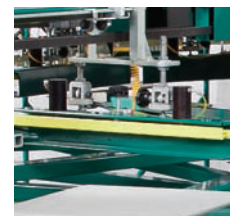
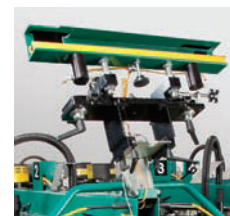
The Falcon "M" Series automatic screen printing press with servo driven indexer and A/C print heads, is the convergence of high production printing at an affordable price. These screen printing machines are built to withstand the rigors of a multi-shift screen printing operation and capable of printing 900-1,000 garments per hour. The Falcon "M" delivers with the quality and speed that your customer demands. It's quick, economical and the easy-to-use functions, make the Falcon "M" the production answer.

## FALCON "E" Servo/Electric Series

The Falcon "E" Series automatic press is designed for the highest production facilities. These presses can be found running around the clock in every corner of the textile world. On the surface, they may appear to be just a large format (20 x 28") printing machine. Dig deeper and you will find the Falcon "E" has the built-in ability to be an all-over printer as well. We call this ability duplexing. Duplexing allows the operator to set up jumbo (40 x 50") sized images on every other head, giving you two machines in one. In standard configuration, the Falcon "E" with servo index and electric heads, like the Falcon "M", will comfortably produce profitable numbers for any large volume operation.



Falcon FM-1012 shown



<b>Falcon "M" 8 color 10 station</b>	<i>call for best pricing</i>
<b>Falcon "M" 10 color 12 station</b>	<i>call for best pricing</i>
<b>Falcon "E" 10 color 12 station</b>	<i>call for best pricing</i>
<b>Falcon "E" 12 color 14 station</b>	<i>call for best pricing</i>
<b>Falcon "E" 14 color 16 station</b>	<i>call for best pricing</i>
<b>Falcon "E" 16 color 18 station</b>	<i>call for best pricing</i>
<b>Falcon "E" 20 color 22 station</b>	<i>call for best pricing</i>



**Black Body**  
INFRARED DRYING SYSTEMS®  
**LITTLE BUDDY II**



Super compact, lightweight and versatile, the Little Buddy II is an ideal dryer for startups, small shops, short runs and on-site jobs. Featuring Black Body heaters and a floating belt tracking guide. Adjustable belt speed control and hassle free belt tracking guide. Locking casters included. Optional heat control. 18" width belt 64" long.

<b>Little Buddy 115vac</b>	\$2095
<b>Little Buddy 230vac</b>	\$2239
<b>Heat Controller 115vac</b>	\$237
<b>Heat Controller 230vac</b>	\$250

**RANOR**  
Manufacturing Co., Inc.

**CURESTAR 4000**



The Cure-Star 4000 offers you all the features the professional screen printer would expect at an affordable price. Designed as an easy to operate and efficient dryer for the T-shirt printer large or small, The CS 4000 is energy efficient as it has low power consumption given its high production rate (approx. 200 shirts per hour). The CS 4000 is a dryer at home in a garage shop or a production floor as it is most versatile when curing plastisol inks. With its 8' length and 24" belt, and a single high performance heater element.

<b>Curestar 4000</b>	\$3295
----------------------	--------

**WORKHORSE**  
PRODUCTS  
Screen Printing Systems



**Compact Dryer**

The Compact Screen Printing Dryer/Oven enables you to produce professional, long lasting images even with a limited space or budget. The Wide 20" (51cm) belt facilitates garment loading while the large and powerful IR heat panel helps achieve fast belt speeds to cure up to 72 pieces per hour.

<b>Workhorse Compact CD205 - 115vac dryer</b>	\$2050
<b>Workhorse Compact CD205 - 220vac dryer</b>	\$2200



Powerhouse 2608

**Powerhouse Dryers**

In contrast to competitive screen printing dryers that offer only narrow belts and minimal wattage, Powerhouse's wider dryer belt and more powerful ovens let you achieve maximum production rates. Plus with a flip of the switch, Flash Phase speeds production by raising garment and ink temperatures more quickly. Flash Phase fully powers the first heat zone while the remaining heat zone is controlled by the digital temperature control.



Powerhouse 3011

Powerhouse's medium wave IR elements transmit heat more quickly than conventional ceramic panels and turbo air-knives turn quick-curing IR heat into gentle convection heat for curing bulky items such as sweat shirts and jackets.



Powerhouse 4013

Heated air recovery draws preheated air from beneath the belt and returns it to the oven area for energy efficiency. Adjustable oven doors help retain oven temperature.

Additionally, the removable oven hood provides easy access to the interior oven for regular cleaning. Four-point belt tracking makes it easy to set up your dryer and extends belt life. Optional add-on in-feed and out-feed facilitates garment loading and unloading when running multiple printing machines.



With a new set of lockable casters, you can maximize your work space by easily moving your Powerhouse Dryer around your entire shop.

<b>Powerhouse Quartz PQ2608 - 26"x8' - 8400watts, 50amps, 1phase</b>	\$4600
<b>Powerhouse Quartz PQ3011 - 30"x11' - 12000watts, 11amps, 1phase</b>	\$6400
<b>Powerhouse Quartz PQ3011 - 30"x11' - 12000watts, 38amps, 3phase</b>	\$6400
<b>Powerhouse PQ3011 - 3' infeed extention</b>	\$600
<b>Powerhouse Quartz PQ4013 - 40"x13' - 18000watts, 82amps, 1phase</b>	\$8200
<b>Powerhouse Quartz PQ4013 - 40"x13' - 18000watts, 56amps, 3phase</b>	\$8200
<b>Powerhouse PQ4013 - 3' infeed extention</b>	\$700
<b>Powerhouse Quartz PQ5217 - 52"x17' - 30600watts, 91amps, 3phase</b>	\$11500
<b>Powerhouse PQ5217 - 3' infeed extention</b>	\$800



Hobbylite

The **Hobby Lite** is the perfect low cost heat press for imaging items such as ceramic tile, mouse pads, plaques, coasters, shirts and more. The Hobby Lites 9"x12" surface and economical price combined with a small desktop printer makes it the number one press for small business, home or school projects.



Swingman 15

The 16"x20" (clamshell) **Presto 20** is designed to be economical for a startup or as an additional press to do extra daily production needs. It can apply all standard, plastisol, inkjet, sublimation, laser, or copier transfers.

The 15"x15" (swingaway) **SwingMan 15** is the best choice for the start-up business. Users will have unlimited application options; from youth size to adult xtra-large garments, and applications on substrates up to 1-1/2" thick.



Swingman 20P

The 16"x20" (swingaway) **SwingMan 20P** Single is perfect for those looking to create tiles, press XXL or smaller size shirts, ceramic tiles, puff transfers, hot split transfers, glass cutting boards, rhinestones, license plates, garments, mouse pads, plaques, and more!

The HIX **SwingMan TWIN** series, now available in two different sizes, offer increased production without taking up valuable workspace. The SwingMan 20D TWIN features a 16"x20" (surface area) swingaway heat platen both in a dual (TWIN) lower design.



Swingman 20D Twin

The 16"x20" **S-650P semi-automatic** (clamshell) press with digital pressure readout was designed for Direct Garment Printers. With the added feature of digital pressure readout, operators can get consistent pressure between different substrates instead of relying on feel and guess work. The press also opens automatically allowing quick hands free operation.



Presto 20

The **B-250D Hat Press** is very portable making it easy to take to shows and operate. The transfer hold down blanket means transfers don't shift anymore! With a standard heat platen of 3-7/8"x 5-7/8", place transfers easily onto hats!



S650-P SemiAuto

<b>Hobbylite</b> - 9" x 12" swing	\$330
<b>Swingman 20E</b> - 16"x20" swing	\$985
<b>Swingman 15</b> - 15" x 15" swing	\$725
<b>Swingman 20P</b> - 16" x 20" swing	\$1540
<b>Swingman 20D Twin</b> - 16" x 20" swing	\$3140
<b>HT 400P</b> - 15" x 15"	\$1025
<b>HT 600P</b> - 16" x 20"	\$1195
<b>S-650P Semi Auto</b> - 16" x 20"	\$1490
<b>B-250D Hat Press</b> - 3.875" x 7.25"	\$665
<b>FH-3000D Flat Press</b> - 3.75" x 6.25"	\$775



B-250D Hat Press

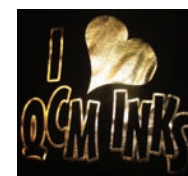
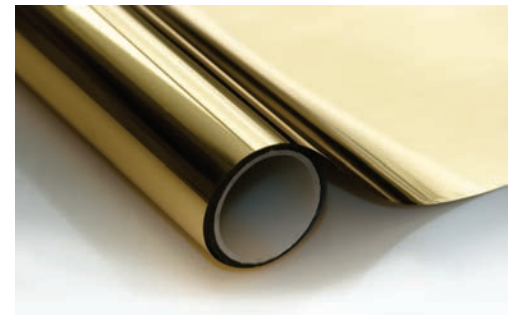
## Heat Transfer Vinyls



Our transfer vinyls offer great stretchability, fine cutting detail and a sticky backer for precise registration of up to 3 colors stacked. Our heat transfer vinyls do not contain PVC, plastisers or heavy metals. Great for player names and numbers or short runs of custom logos and graphics. Works great with Cotton, Polyester, Cotton/Poly Blends, and Satin. Over 25 colors 20" wide and sold by the yard. Call for qty discounts. See back page for our vinyl cutting services

	yard	10+yards
<b>Standard Colors</b>	\$13	\$11
<b>Metallics / Neons</b>	\$15	\$13
<b>Teflon Sheet 18"x20"</b>	\$18	
<b>Weeding Tool</b>	\$10	

## Foils



Add decorative foils to your garments. Use a 60-110tpi mesh screen to print ATP-190 Adhesive. Cure adhesive, then apply foil and heat press.

Foils available in silver, gold, copper, bronze, red, purple and blue.

ATP-190 can also be used for adhering sequins, glitter and other decorative materials.

<b>Foil 12"x200' roll</b>	\$30
<b>ATP-1001 Foil Adhesive Quart</b>	\$30
<b>ATP-1001 Foil Adhesive Gallon</b>	\$68

Visit our website or call us for more models and further information on Hix Presses.

*The original  
and still the best!*

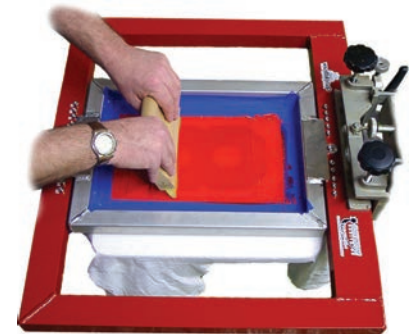


Printing numbers has never been faster or easier. You can now print high quality, cost effective team numbering in both one and two color numbers in single or double digits.

Our Aluminum Master Frame has stainless steel pins along the top and bottom of the frame for proper and simple number screen placement. Each small number screen is made of aluminum with special registration plates welded in place on the top and bottom. They simply drop into place on the corresponding top and bottom stainless pins.



<p><b>One color (10 screen) kit</b> One color system includes: 1 Master Frame, 10 Number Screens, 2 Squeegees, Scoop Coater, 10 Proofing Squares and 1 color film set (your choice of size and font).</p>	\$720
<p><b>Two color (20 screen) kit</b> Two color system includes: 1 Master Frame, 20 Number Screens, 2 Squeegees, Scoop Coater, 10 Proofing Squares and 2 color film set or 2 one color film sets (your choice of size and font).</p>	\$1050



**Individual components:**

Master Frame	\$375
Extra Screens	\$27
8" 70 durometer squeegee	\$12
9" scoop coater	\$22
One color film set	\$50
Two color film set	\$100



# Prepress / Graphic Services



## Graphic Design:

We offer complete graphic design services. With over 17 years experience using Adobe® design programs we can provide you with professional design work from concept to finished design. Whether it's rebuilding lost artwork, repair damaged artwork or building them from scratch we can get the job done for you with a fast turn around time too.



## Color Separations / Film output:

Already have your design but need color separations or film output? We can help. Great designs need great separations if you want them to print well. We offer all types of color separations from CMYK to spot process, spot color and index separations. Send us over your artwork and we can do the separation and send you back ready to print Adobe® PDF files or if you need we can output your film from our high resolutions inkjet printers. Up to 44" wide by 100' if you need. Call us today for pricing.



## Screen Exposure:

Just want screens back ready to print? No problem we offer complete screen exposure services. Bring in your screen and films or use ours and we will hand you back a ready to print screen. We use our standard Murakami® SP9500 emulsion for use with all types of inks. We can also add our A&B hardener for use with waterbased ink, just ask. Need some really big screens made? Don't hesitate to call we can do them up to 120"x180"



## Cad Cut and Digital Heat Transfers:

We sell yards of heat transfer vinyl, but if you don't have a cutter just let us know we are happy to do the cutting for you. Send us your team names, number or logos, let us know the color and size and we will ship you back your vinyl ready to heat press to your garments. Choose from over 25 different colors. Need something with a bit more color? We also offer our digitally printed full color heat transfer vinyls, send us your graphics and we will print and cut them for you.

**800-574-3477**  
**westarsolutions.com**



**380 Pease Road**  
**Burlington, WA 98233**  
360-757-2102 • 360-757-4417 Fax