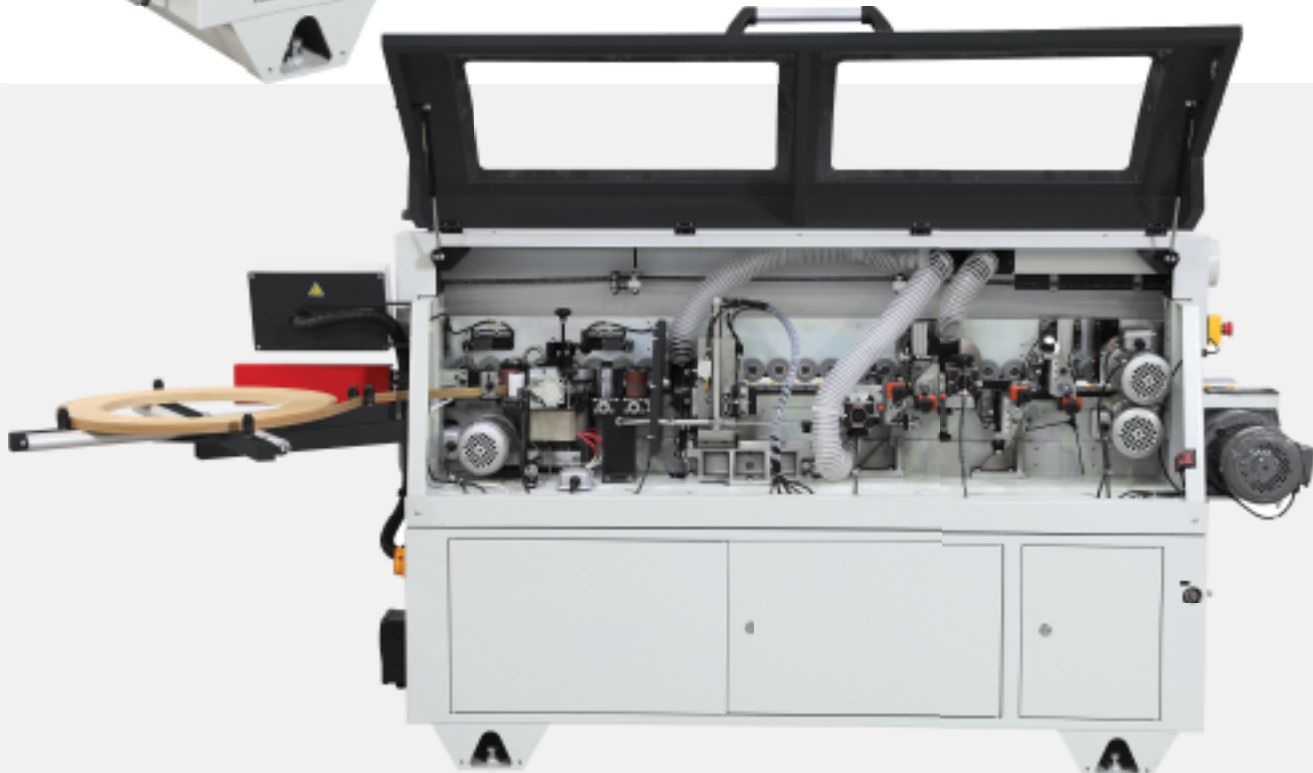




# MX340

AUTOMATIC EDGEBANDER





# MX340

## AUTOMATIC EDGE BANDER



### GUILLOTINE SHEARS

Coiled material up to 3 mm in thickness can be trimmed by the guillotine shears



### GLUE POT

The 1.2 kg Teflon-coated glue pot is designed for EVA hot-melt glue. The glue is applied by a roller and the glue amount is adjustable



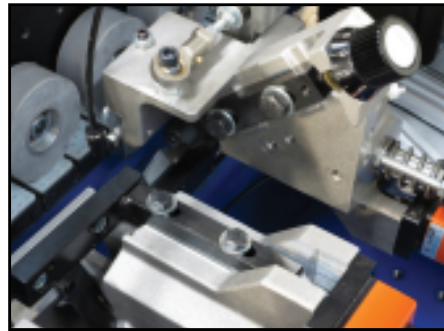
### END CUTTING UNIT

Mounted on high-precision linear bearings, which ensure perfect cutting results for years to come. The high frequency 12,000 RPM motor meets any challenge regardless of edge type and thickness



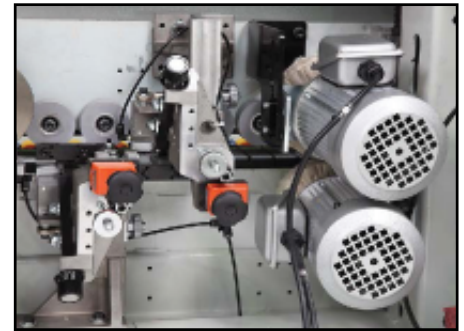
### FLUSH AND RADIUS TRIMMING UNIT

The adjustment of the settings from flush to beveled finish for thin edges, as well as radius trimming for thicker edges, is quick and easy.



### SCRAPING UNIT - RADIUS SCRAPING UNIT

The scraping unit fine-tunes the edge radius while removing knife marks left on during the milling process on 2mm & 3mm edging



### BUFFING UNIT

The buffing unit leaves a super finish on ABS and PVC edging, and removes any discoloration on the edges, which is especially noticeable when working with dark edge material

## FEATURES

- PLC control system with LED display and keypad
- Work-piece is fed by chain
- Edge coil support plate: Ø 800 mm, for PVC/ABS
- Edge feeding is Automatic edge feeding with a thickness capacity of 0.4–3 mm; strip material can be hand-fed
- Coiled edge bands up to 3 mm in thickness in Hard-PVC/ABS are cut with guillotine shears.
- Teflon-coated hot-melt glue pot
- Spring loaded pressure unit with (2) pressure rollers
- High frequency 12000 RPM end trimming unit, with Ø100 mm TC-Saw blades
- High frequency 12000 RPM top & bottom trimmers with insert knife cutters for radius trimming & bevel trimming
- Radius scraper with 2mm radius
- 3000 RPM top & bottom buffing units
- Heavy duty pressure beam with extendable work-piece support
- Heated infeed fence for pre-heating the panel for optimum glue penetration

## SPECIFICATIONS

Feeding speed	9 meters/min.
Panel thickness	8~45 mm
Edge thickness	0.4 ~ 3 mm
Min. panel width	100 mm
Min. panel length	110 mm
Working table height	850 mm
Dust collection outlet	Ø 127 mm (5")
Electrical consumption	5.5 KW
Machine dimensions	2950 x 1370 x 660 mm
Machine weight	520 kgs
Shipping dimensions	2260 x 700 x 1670mm
Shipping weight	580 kgs
Voltage	230/3/60

### MOTOR SPECIFICATIONS

Feeding motor	0.75 (kW)
Glue spindle motor	0.18 (kW)
Front/rear trimming motor	0.22 (kW)
Upper trimming motor	0.37 (kW)
Lower trimming motor	0.37 (kW)
Upper buffing motor	0.12 (kW)
Lower buffing motor	0.12 (kW)
Pre-heating	0.4 (kW)
Glue pot	1.315 (kW)