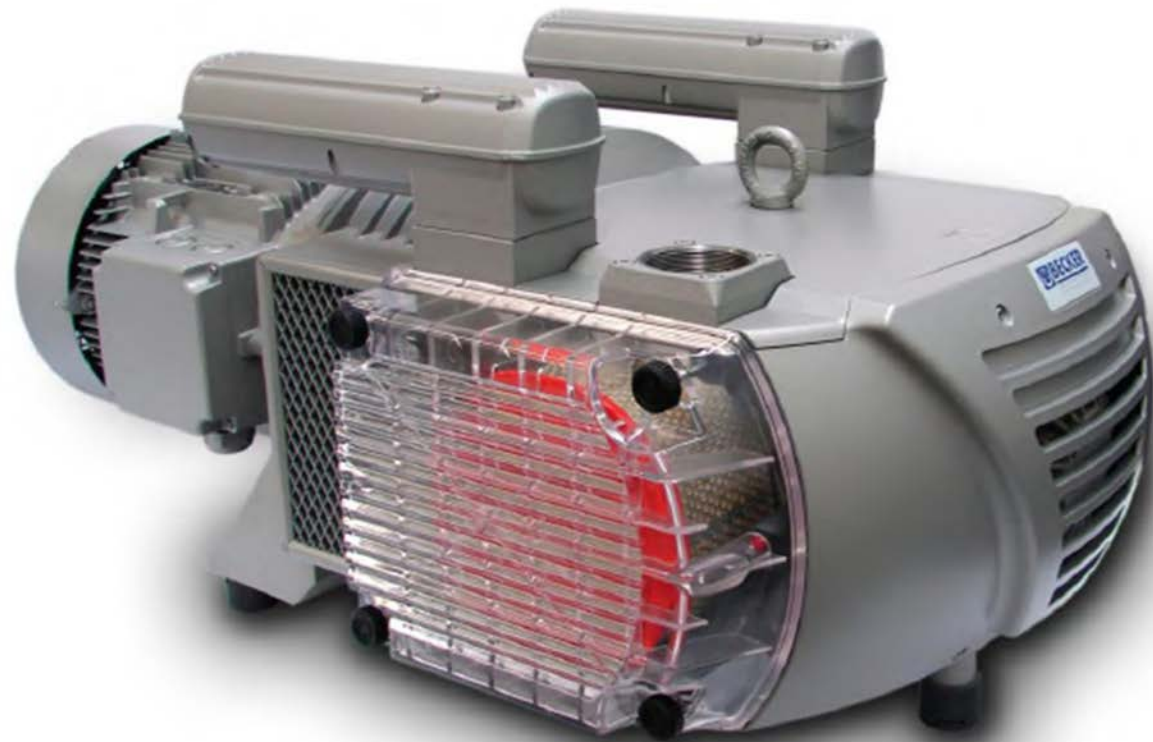
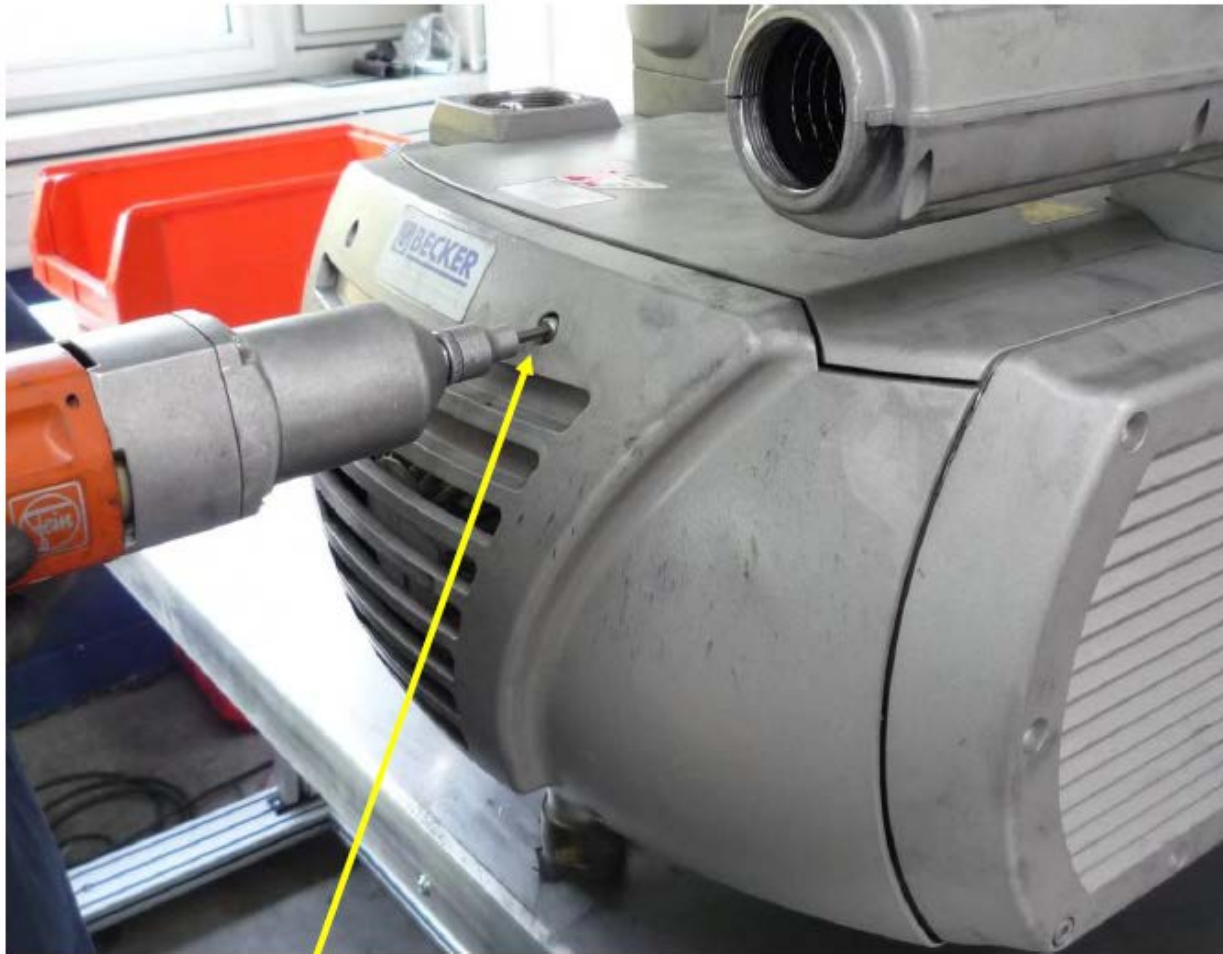
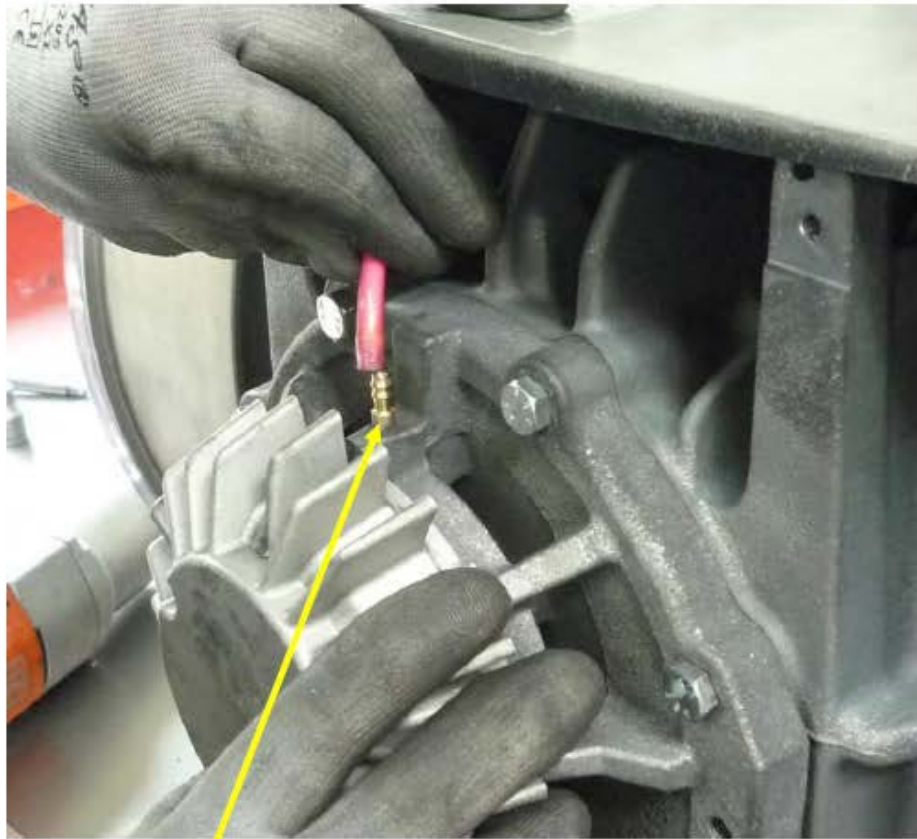


Vane replacement TLF 2.200-2.360





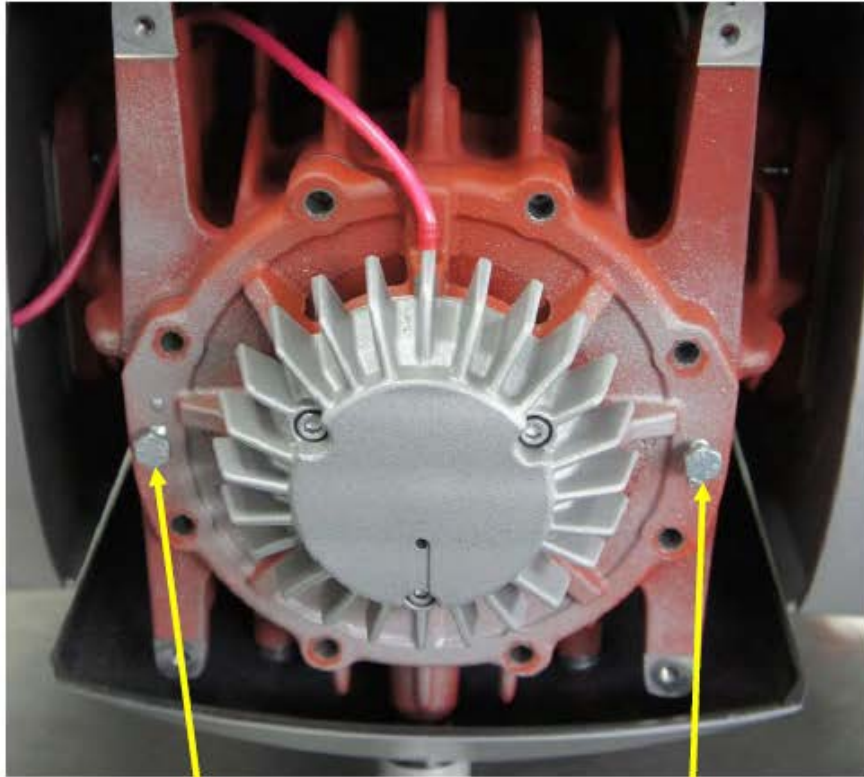
Disengage M6x55 screws and remove air guide cover ring Pos. 5.



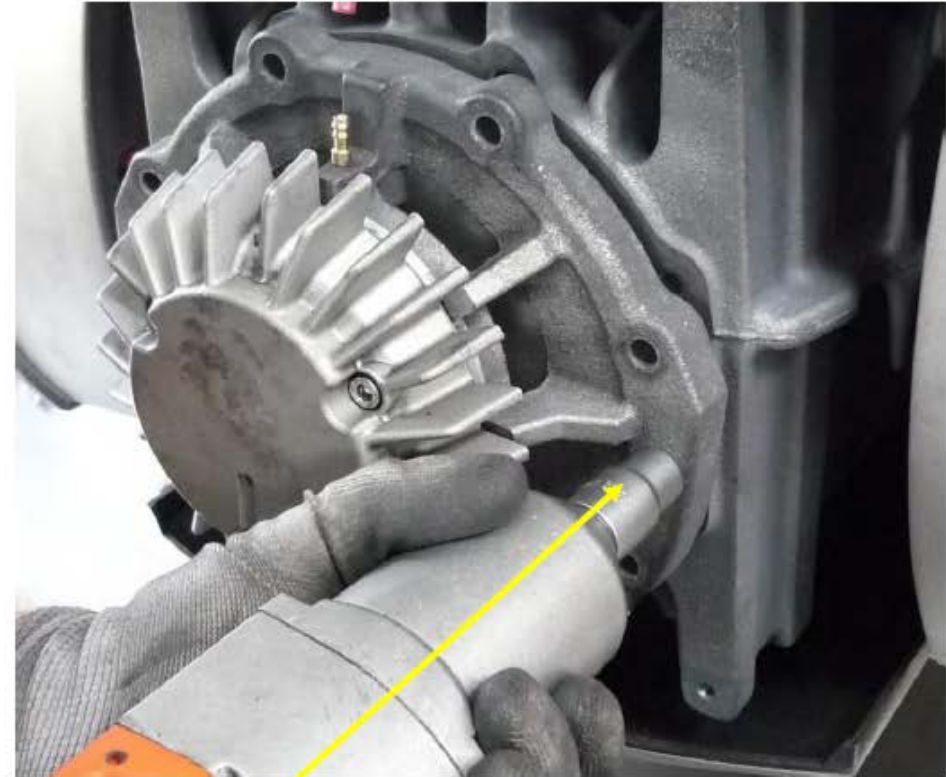
Remove lubrication line Pos. 228.



Disengage the 8 M8x25 screws.



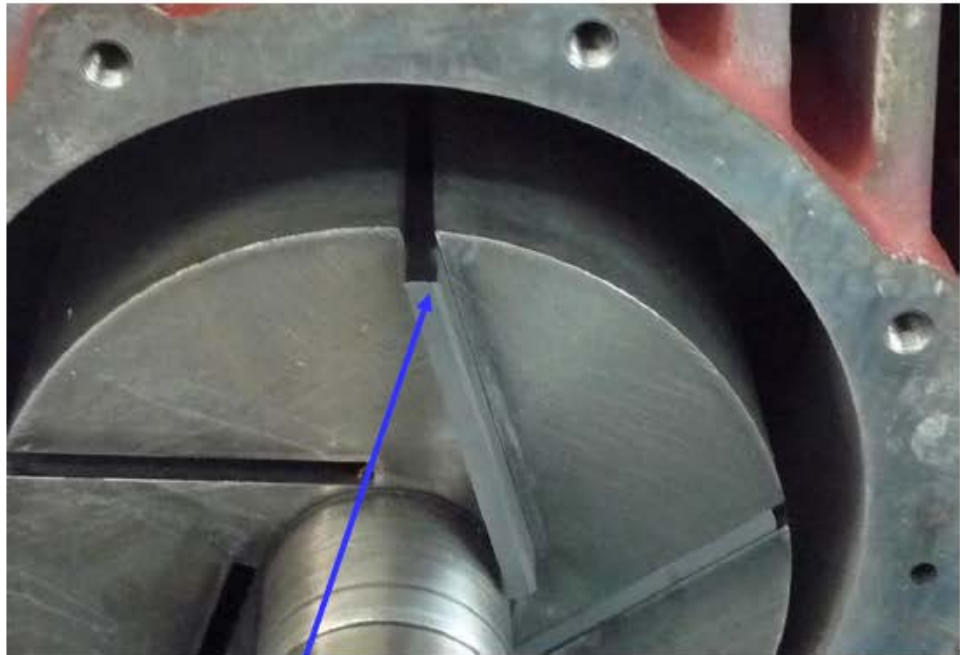
Screw in 2 of the M8x25 screws in the threaded holes inside the lid Pos.111.



Tighten both screws equally to disengage the lid. Then remove rotary vanes.



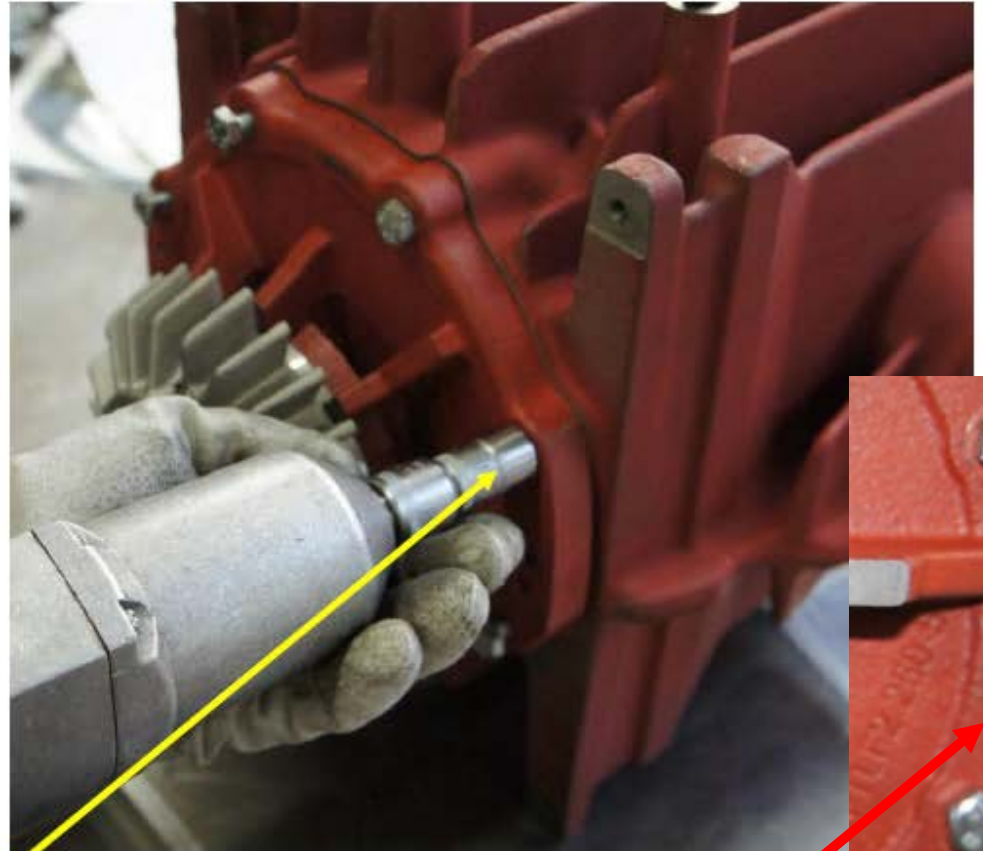
Insert vanes into the grooves of the rotor.



Insert the vanes so the chamfer is aligned corresponding to the picture.



Push the lid Pos.111 on the rotor and fasten it with 8 M8x25 screws.



Make sure the pins are seated within the housing, and are flush with the end shield face before tightening the M8x25 screws.

