

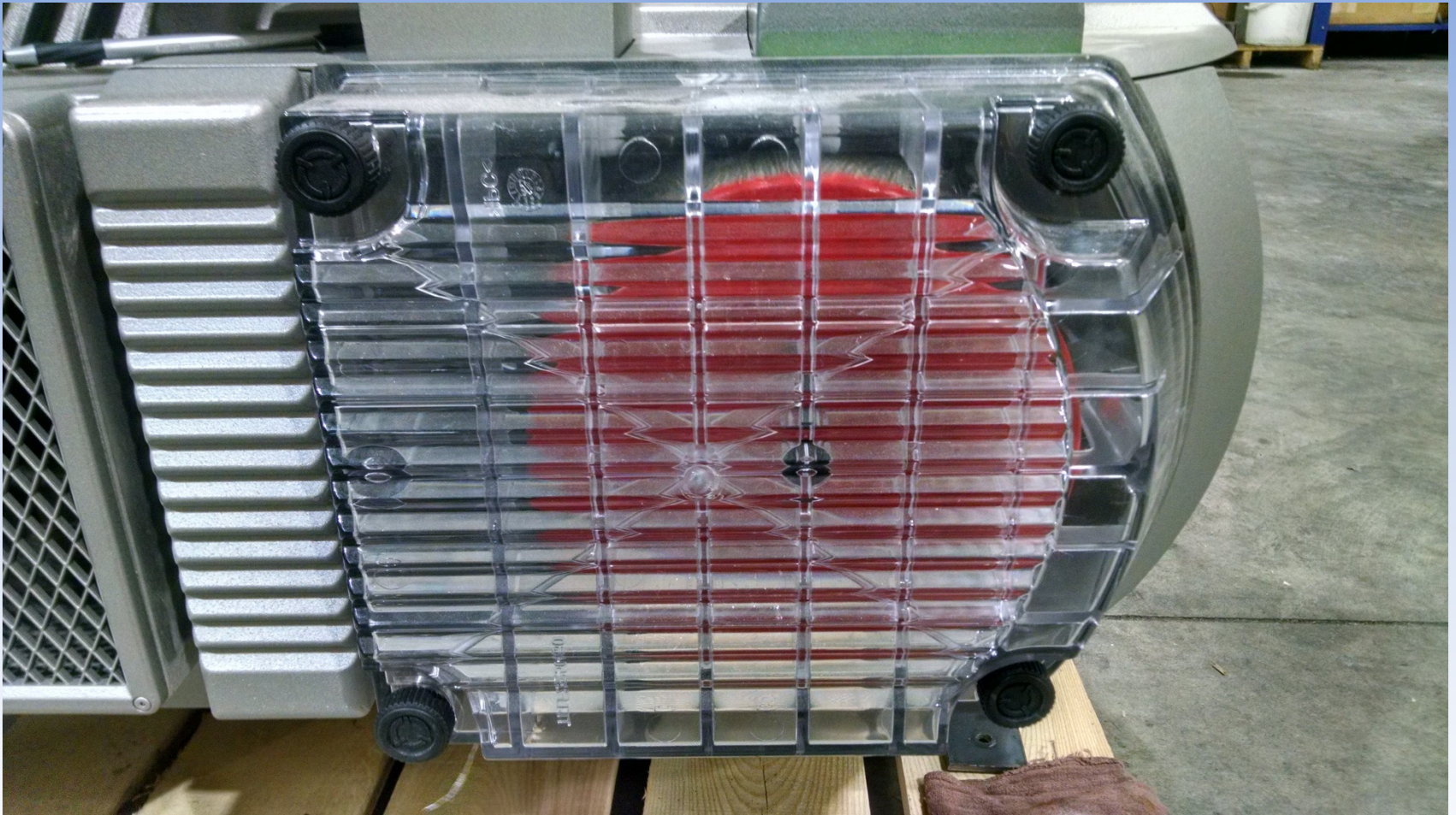
TLF 2.250-2.500

Internal Filter Inspection

-Tools required-
Flashlight

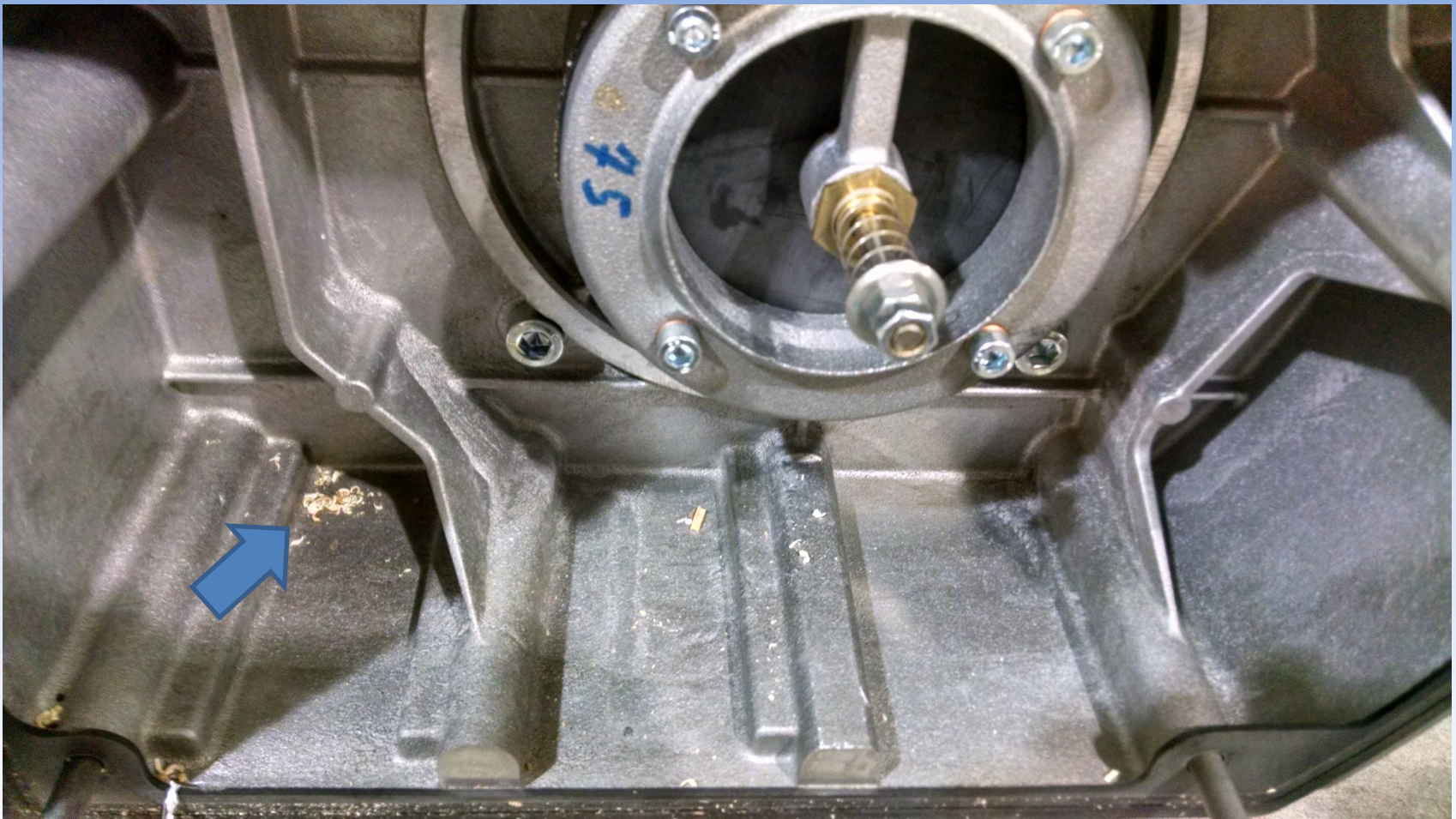


- Remove the (4) black knobs by hand



- Remove the internal filter and look for debris

- Check for large debris deposits. This is an indicator that the filter caught the smaller particles



- Use a flashlight on the outside of the filter



If light **cannot** be seen on the inside, the filter is clogged and needs replaced.



- If you **can** see light, then blow out the filter using compressed air and replace

- This needs to be a modest amount of light.
- Light should be present through each pleat.

