



pole mounted aluminum shelving

PAL series



PAL33BAS

33" wide pole mounted aluminum shelving with 2-door base cabinet

Satin Anodized Aluminum Poles with choice of anodized or powder coated adjustable aluminum shelves. Single unit mounts with four screws to any wall. Add more units to fill an entire wall.

applications

Home: office, living areas, storage and display, closet, audio visual
Commercial: schools, hospitals, offices, libraries, retail stores, businesses and more.

materials

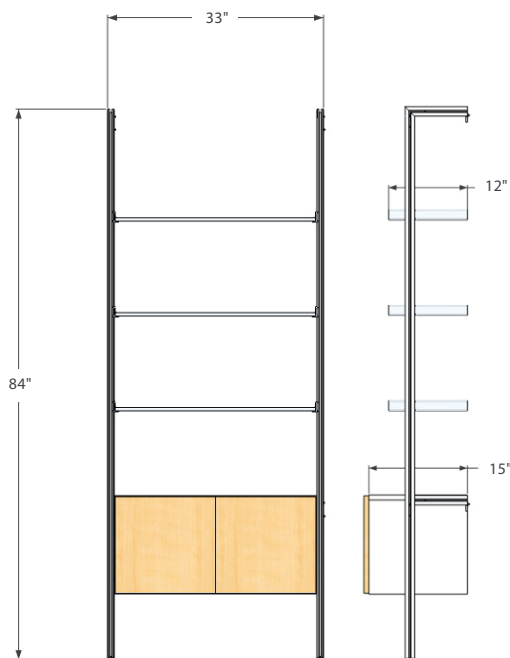
Poles and shelves are made of extruded anodized aluminum and powder coated when color is specified. Cabinets are made of white wood laminate with your choice of wood laminate finish fronts.

dimensions

33"W X 84"H X 15 3/4"D

load capacity

100 lbs per Shelf



| shelves | cabinet fronts | hardware | sku |
|---------|----------------|----------|--------------|
| satin | white | satin | PAL33BAS-SWH |
| satin | maple | satin | PAL33BAS-SMA |
| satin | walnut | satin | PAL33BAS-SWA |
| satin | black | satin | PAL33BAS-SBL |
| white | white | satin | PAL33BAS-WWH |
| white | maple | satin | PAL33BAS-WMA |
| white | walnut | satin | PAL33BAS-WWA |
| white | black | satin | PAL33BAS-WBL |
| black | black | satin | PAL33BAS-BBL |

aluminum colors



wood colors



designed in california. shipped worldwide.

To place an order, visit modernshelving.com or contact us by phone at 1.877.477.5487
For trade inquires or product questions please email sales@modernshelving.com.

modern shelving
san clemente, california | 877.477.5487 | info@modernshelving.com