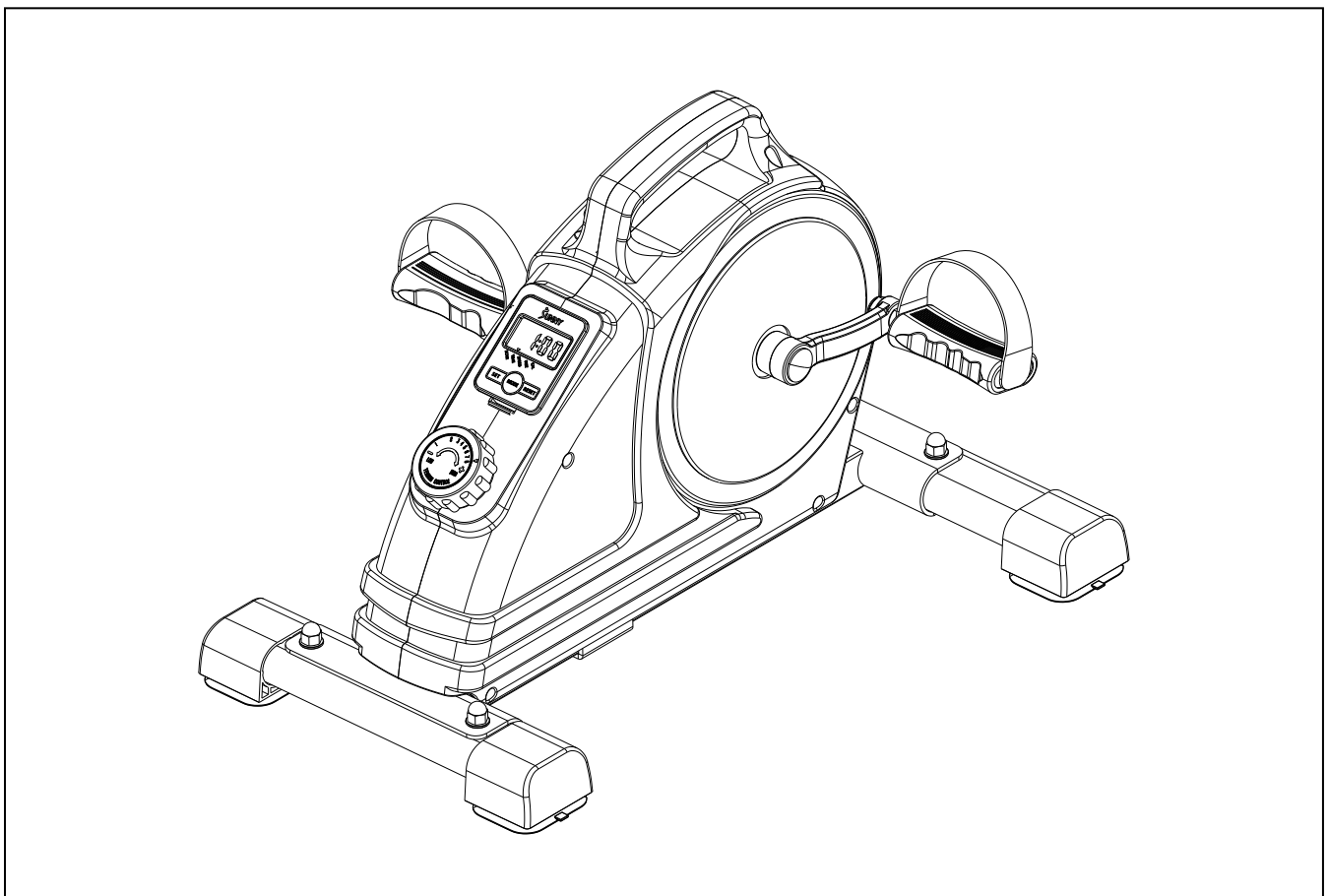




Magnetic Mini Exercise Pedal Cycle

SF-B020026

USER MANUAL



DO NOT STAND ON THE UNIT.

IMPORTANT! Please retain owner's manual for maintenance and adjustment instructions. Your satisfaction is very important to us, **PLEASE DO NOT RETURN UNTIL YOU HAVE CONTACTED US:** support@sunnyhealthfitness.com or 1- 877 - 90SUNNY (877-907-8669).



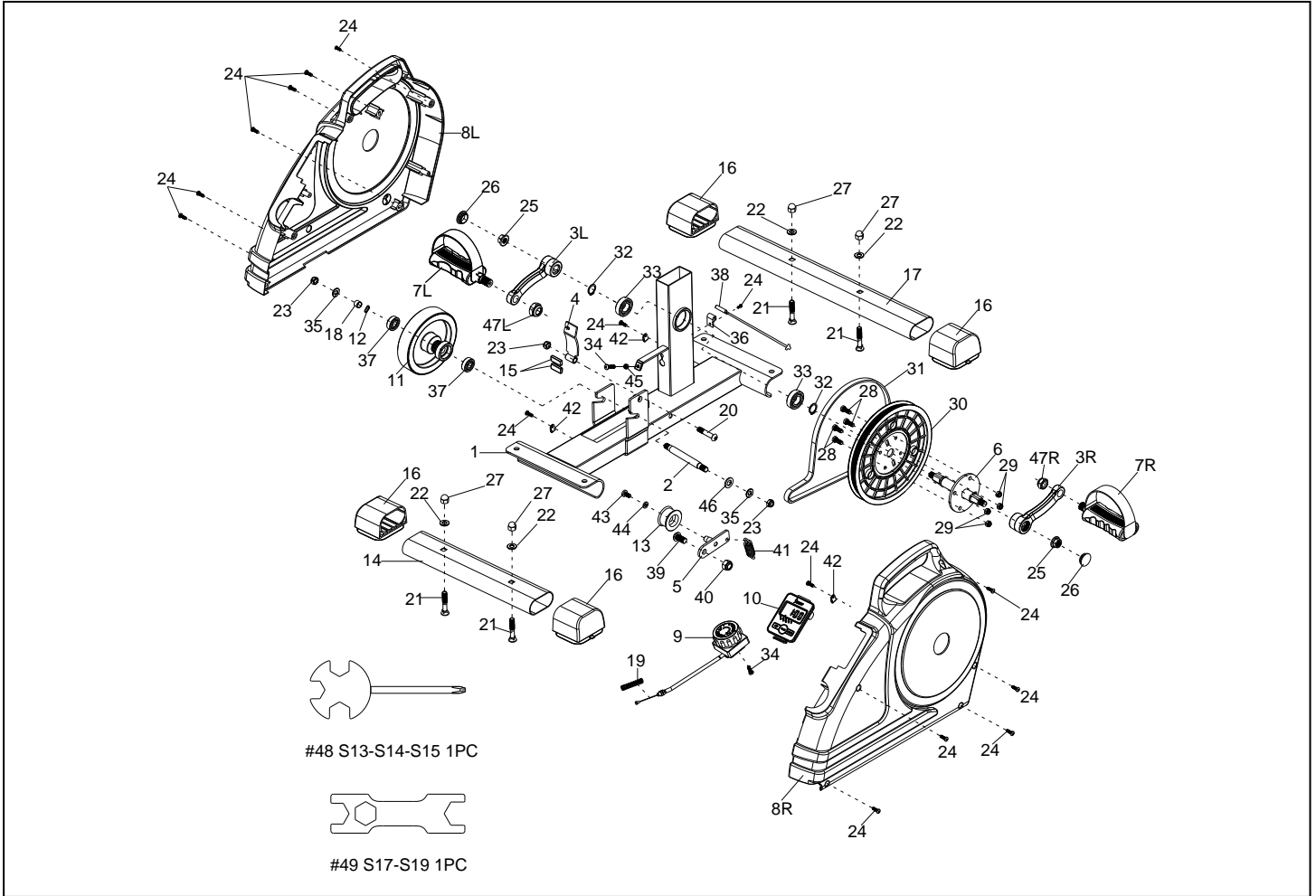
WWW.SUNNYHEALTHFITNESS.COM

IMPORTANT SAFETY INFORMATION

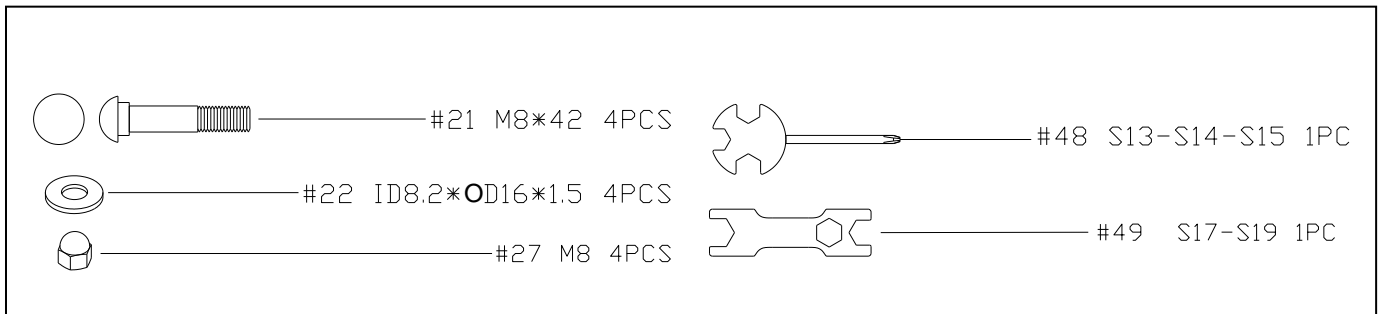
We thank you for choosing our product. To ensure your safety and health, please use this equipment correctly. It is important to read this entire manual before assembling and using the equipment. Safe and effective use can only be achieved if the equipment is assembled, maintained, and used properly. It is your responsibility to ensure that all users of the equipment are informed of all warnings and precautions.

1. Before starting any exercise program, you should consult your physician to determine if you have any medical or physical conditions that could put your health and safety at risk or prevent you from using the equipment properly. Your physician's advice is essential if you are taking medication that affects your heart rate, blood pressure, or cholesterol level.
2. Be aware of your body's signals. Incorrect or excessive exercise can damage your health. Stop exercising if you experience any of the following symptoms: pain, tightness in your chest, irregular heartbeat, shortness of breath, lightheadedness, dizziness, or feelings of nausea. If you do experience any of these conditions, you should consult your physician before continuing with your exercise program.
3. Keep children and pets away from the equipment. The equipment is designed for adult use only.
4. Use the equipment on a solid, flat level surface with a protective cover for your floor or carpet. To ensure safety, the equipment should have at least 2 feet (60 CM) of free space all around it.
5. Ensure that all nuts and bolts are securely tightened before using the equipment. The safety of the equipment can only be maintained if it is regularly examined for damage and/or wear and tear.
6. Always use the equipment as indicated. If you find any defective components while assembling or checking the equipment, or if you hear any unusual noises coming from the equipment during exercise, discontinue use of the equipment immediately and do not use until the problem has been rectified.
7. Wear suitable clothing while using the equipment. Avoid wearing loose clothing that may become entangled in the equipment.
8. Do not place fingers or objects into the moving parts of the equipment.
9. The equipment is not suitable for therapeutic use.
10. To avoid bodily injury and/or damage to the product or property, proper lifting and moving are required.
11. Your product is intended for use in cool, dry conditions. You should avoid storage in extreme cold, hot or damp areas as this may lead to corrosion and other related problems.
12. This equipment is designed for indoor and home use only; it is not intended for commercial use!

EXPLODED DIAGRAM



HARDWARE PACKAGE



PARTS LIST

No.	Description	Spec.	Qty.	No.	Description	Spec.	Qty.
1	Main Frame		1	26	End Cap		2
2	Spindle		1	27	High Cap Nut	M8	4
3L/R	Crank		2	28	Bolt	M6*15	4
4	Magnetic Board		1	29	Nylon Nut	M6	4
5	Idler Wheel Shaft		1	30	Belt Wheel		1
6	Axle for Crank		1	31	Belt	J300	1
7L/R	Pedal		2	32	C-clip		2
8L/R	Belt Cover		2	33	Bearing	6003	2
9	Tension Control Knob		1	34	Screw	M5*15	2
10	Meter		1	35	Flat Washer	Φ8.2*Φ16*1.5	2
11	Inertial Wheel		1	36	Inductor Seat		1
12	Wave Washer		1	37	Bearing	6000	2
13	Idler Wheel		1	38	Inductor		1
14	Rear Stabilizer		1	39	Screw	M10*18*12	1
15	Magnet		2	40	Nylon Nut	M10	1
16	End Cap		4	41	Spring		1
17	Front Stabilizer		1	42	Wire Clip		3
18	Sleeve		1	43	Screw	M6*12	1
19	Spring		1	44	Flat Washer	Φ6.4*Φ12*1.2	1
20	Bolt	M8*35*15	1	45	Nut	M5	1
21	Carriage Bolt	M8*42	4	46	Washer	Φ10.2*Φ20*1.5	1
22	Washer	ID8.2*OD16*1.5	4	47L/R	Nylon Nut	M12	2
23	Nylon Nut	M8	3	48	Spanner	S13-S14-S15	1
24	Screw	ST4.2*15	15	49	Spanner	S17-S19	1
25	Flange Nut	M10	2				

Ordering Replacement Parts (U.S. and Canadian Customers only)

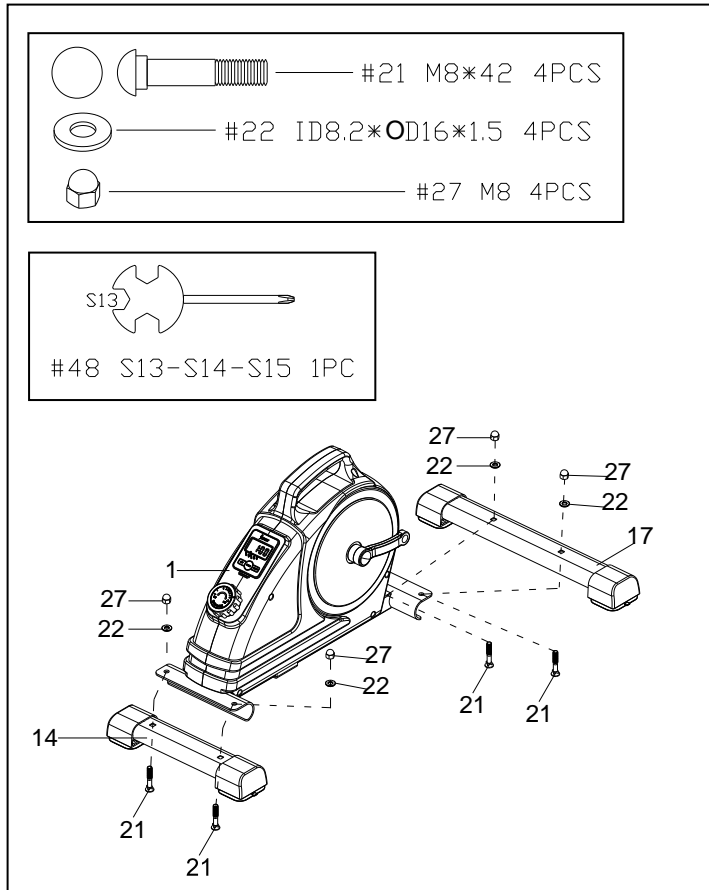
Please provide the following information in order for us to accurately identify the part(s) needed:

- ✓ The model number (found on cover of manual)
- ✓ The product name (found on cover of manual)
- ✓ The part number found on the “EXPLODED DIAGRAM” and “PARTS LIST” (found near the front of the manual)

Please contact us at support@sunnyhealthfitness.com or 1- 877 - 90SUNNY (877-907-8669).

ASSEMBLY INSTRUCTIONS

We value your experience using Sunny Health and Fitness products. For assistance with parts or troubleshooting, please contact us at support@sunnyhealthfitness.com or 1-877-90SUNNY (877-907-8669).

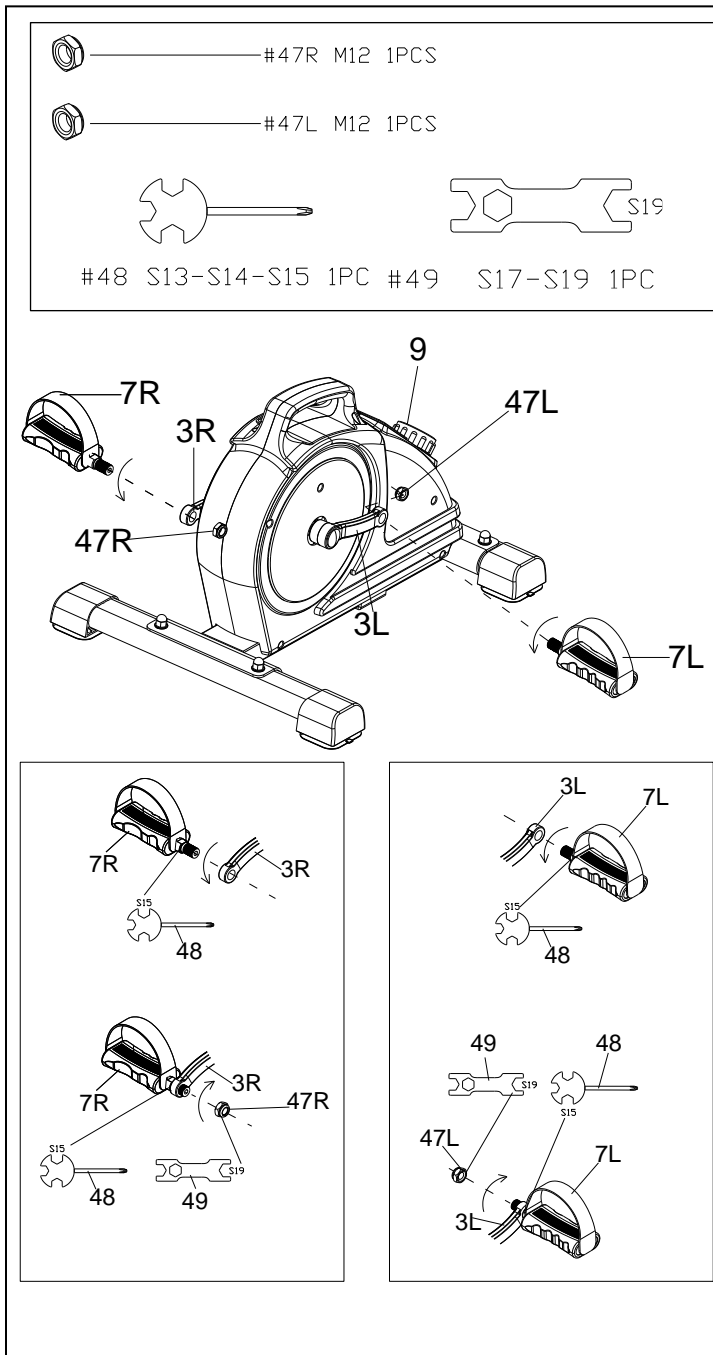


STEP 1:

Attach **Rear Stabilizer (No. 14)** to the **Main Frame (No. 1)** with 2 **Carriage Bolts (No. 21)**, 2 **Washers (No. 22)**, and 2 **High Cap Nuts (No. 27)**. Tighten and secure with **Spanner (No. 48)**.

Attach **Front Stabilizer (No. 17)** to the **Main Frame (No. 1)** with 2 **Carriage Bolts (No. 21)**, 2 **Washers (No. 22)**, and 2 **High Cap Nuts (No. 27)**. Tighten and secure with **Spanner (No. 48)**.

We value your experience using Sunny Health and Fitness products. For assistance with parts or troubleshooting, please contact us at support@sunnyhealthfitness.com or 1-877-90SUNNY (877-907-8669).



STEP 2:

NOTE: The Pedals (No. 7L & No. 7R) are marked “L” and “R” for Left and Right.

WARNING! Read instructions carefully as improper assembly may cause permanent damage to your bike.

Remove the 2 Left & Right Nylon Nuts (No. 47L & No. 47R) located on the Pedals (No. 7L & No. 7R).

Align the Left Pedal (No. 7L) with the Left Crank (No. 3L) at 90°. Gently insert the Left Pedal (No. 7L) into the Left Crank (No. 3L) and turn the Left Pedal (No. 7L) counter-clockwise as tightly as you can with your hand. Use Spanner (No. 48) to tighten and secure.

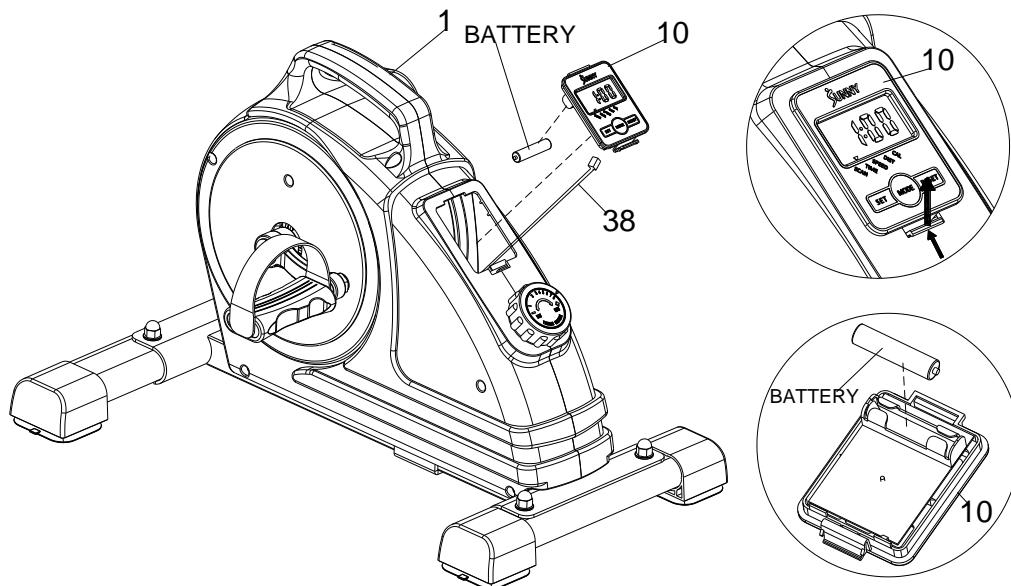
Turn the Left Nylon Nut (No. 47L) clockwise as tightly as you can with your hand. Use Spanner (No. 48) to hold the pedal bolt on the Left Pedal (No. 7L) and use Spanner (No. 49) to turn the Left Nylon Nut (No. 47L) clockwise at the same time, until it is tightened on to the Left Crank (No. 3L).

Align the Right Pedal (No. 7R) with the Right Crank (No. 3R) at 90°. Gently insert the Right Pedal (No. 7R) into the Right Crank (No. 3R) and turn the Right Pedal (No. 7R) clockwise as tightly as you can with your hand. Use Spanner (No. 48) to tighten and secure.

Turn the Right Nylon Nut (No. 47R) counter-clockwise as tightly as you can with your hand. Use Spanner (No. 48) to hold the pedal bolt on the Right Pedal (No. 7R) and use Spanner (No. 49) to turn the Right Nylon Nut (No. 47R) counter-clockwise at the same time, until it is tightened on to the Right Crank (No. 3R).

The assembly is complete!

BATTERY INSTALLATION & REPLACEMENT



BATTERY INSTALLATION:

1. Take out 1AAA battery from the manual bag.
2. Remove the **Meter (No. 10)** from **Main Frame (No. 1)**. Then disconnect the link wire of **Inductor (No. 38)** with the **Meter (No. 10)**.
3. Install 1 AAA battery into the battery case on the back of the **Meter (No. 10)**. Pay attention to the battery + and – poles before installing.
4. Insert the link wire of **Inductor (No. 38)** into the hole on the back of **Meter (No. 10)**.
5. Attach the **Meter (No. 10)** onto **Main Frame (No. 1)**.

The installation is complete!

BATTERY REPLACEMENT:

Remove the 1 old AAA battery in the battery case and install 1 new AAA battery into the battery case on the back of the **Meter (No. 10)**. Pay attention to the battery + and – poles before installing.

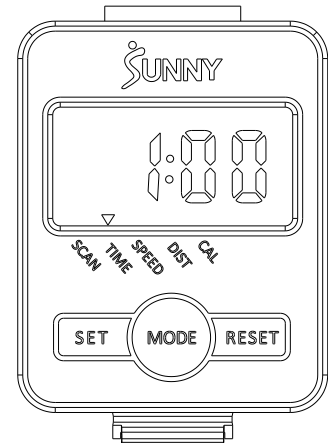
The replacement is complete!

NOTE: Dispose battery according to your state and regional guidelines.

EXERCISE METER

SPECIFICATIONS:

SPEED-----	0.0~999.9MPH (Mile/Hour)
TIME-----	0:00~99:59MIN
DISTANCE-----	0.0~9999M (Mile)
CALORIES-----	0.0~9999KCAL



FUNCTION KEYS:

MODE: Push down for selecting functions. If the long time holds down MODE button down for resetting time, distance and calories.

SET: To set the values of time, distance and calories when not in scan mode.

RESET: Push down for resetting time, distance and calories.

FUNCTIONS:

SCAN: Press “MODE” button until “SCAN” appears, monitor will rotate through all the 4 functions: Time, speed, distance, calorie. Each display will be hold 4 seconds.

TIME:

(1) Count the total time from exercise start to finish.

(2) Press “MODE” button until “TIME” appears, press “SET” button to set exercise time.

SPEED: Display current speed.

DIST:

(1) Count the distance from exercise start to end.

(2) Press “MODE” button until “DIST” appears, Press “SET” button to set exercise distance.

CALORIES:

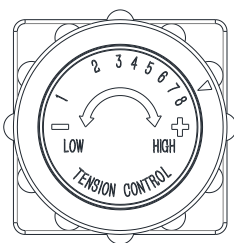
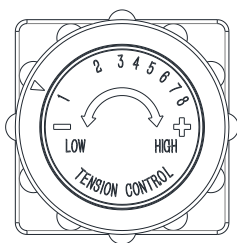
(1) Count the total calories from exercise start to end.

(2) Press “MODE” button until “CAL” appears, Press “SET” button to set exercise calories.

NOTE:

1. Please use 1pc of battery AAA 1.5V battery as a power supply. If there is an abnormal display on the meter, please replace the battery.
2. The meter will automatically power on when pedals are in motion or the MODE key is being pressed.
3. The monitor will be auto-powered on when starting to exercise push button signal in.
4. The monitor will automatically start calculating when you start to exercise and will stop calculating when you stop exercising for 4 seconds.

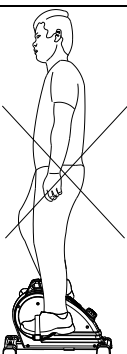
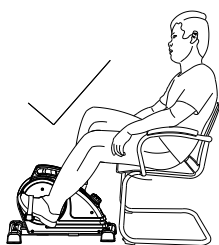
ADJUSTMENTS & USAGE GUIDE



ADJUSTING THE TENSION

Adjust the tension by rotating the **Tension Control Knob (No. 9)** *clockwise* to increase the level of resistance. Rotate the **Tension Control Knob (No. 9)** *counterclockwise* to decrease the level of resistance.

Tension levels are set at Level 1 being the lowest and Level 8 being the highest.



**USE ONLY WHILE SITTING.
DO NOT STAND ON THE
MACHINE!**

WARNING

The machine is intended to use in a sitting position only, do not stand on the machine.

Failure to follow all warnings and instructions could result in serious injury or death.

Version: 1.1

CONNECT WITH US

FOR FITNESS
ARTICLES, VIDEOS
& WORKOUTS



@SUNNYHEALTHANDFITNESS



@SUNNYHEALTHFITNESS



@SUNNYHEALTHFIT



/SUNNYHEALTHFITNESS



/SUNNYHEALTHANDFITNESS

WWW.SUNNYHEALTHFITNESS.COM