

# General Rower Sensor Cable Installation Guide



In some instances, the sensor wire on a rowing machine may need to be replaced. Fortunately, the process of removing and reinstalling a sensor wire is simple. In this general guide, we've demonstrated how to remove, replace, and reinstall your sensor wire on your Sunny Health & Fitness rowing machine.

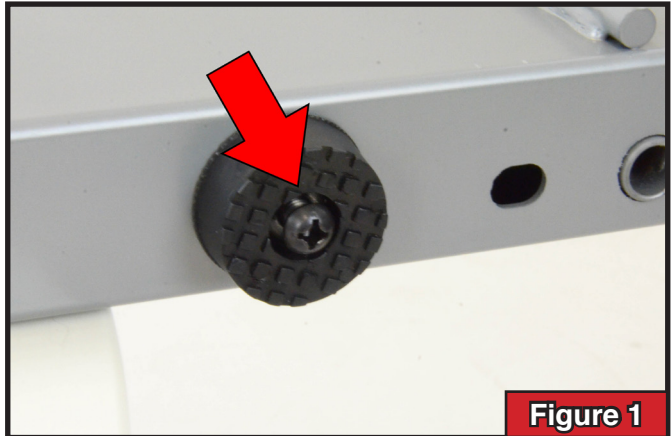
To complete this guide, you will need a Phillips-head screwdriver.

For assistance, email Sunny Health & Fitness at support @sunnyhealthfitness.com.

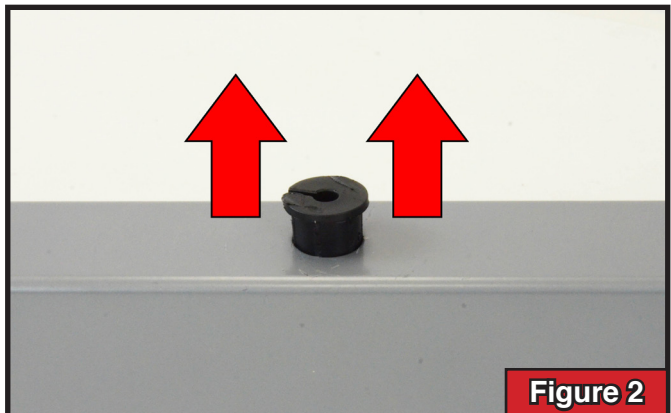
## General Rower Sensor Cable Installation Guide

**Step One:** Use a Philips-head screwdriver to remove the limit mat from your slide rail. **See Figure 1.**

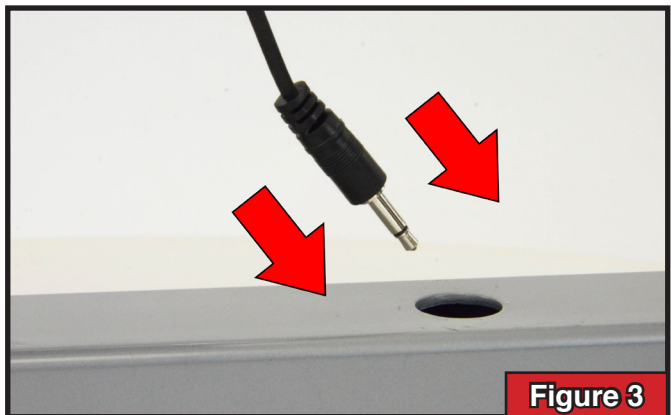
Find fitness advice, free workouts, guides and more on our website at [www.sunnyhealthfitness.com](http://www.sunnyhealthfitness.com)



**Step Two:** Remove the grommet that contains the head of the sensor wire. Take the sensor head out of its rubber enclosure. Also remove the rubber stopper holds the connecting end of the wire in place toward the rear of the slide rail. (If a sensor wire is already installed, remove it.) **See Figure 2.**



**Step Three:** Guide the new sensor wire through the opening that previously held the grommet. Guide the sensor wire into the opening with its connecting port first. **See Figure 3.**



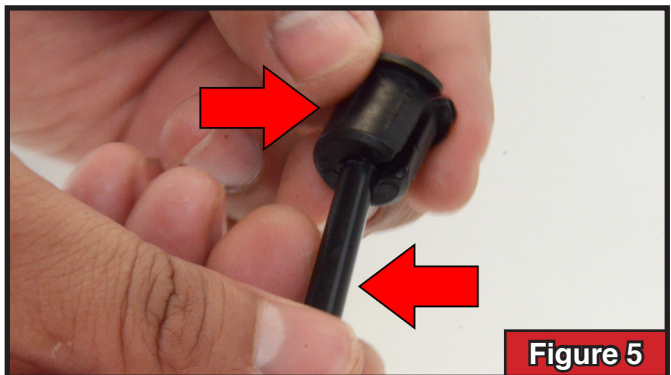
## General Rower Sensor Cable Installation Guide

**Step Four:** Slowly and carefully feed the sensor wire from the opening to the exposed end of the slide rail. See **Figure 4**.

Listen to our podcast at  
[www.sunnyhealthfitness.com/sunny-podcast](http://www.sunnyhealthfitness.com/sunny-podcast)



**Step Five:** When the connecting end of the sensor is visible from the exposed part of the slide rail, reconnect the grommet to the head of the new sensor wire. See **Figure 5**.



**Step Six:** Secure the connecting end of the sensor wire to the rear of the slide rail. Some models will include a grommet to keep the sensor wire in place. Reinstall the limit mat. See **Figures 6 and 7**.

