

Firefly

Quick Reference Guide

www.jabees.com

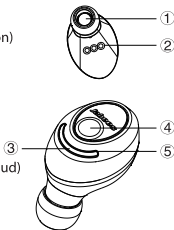


Jabees
Love Life Love Music

Jabees Firefly is the V5.0 Bluetooth True Wireless Stereo Earbuds supporting Auto Power On/Off Technology, Voice Assistant, Fast Charging, Ambient Sound Mode, Voice Prompts in English and Chinese, and other features specified in this QR.

OVERVIEW of Firefly

- (1) Speaker
- (2) Charging Contact Points
- (3) LED Light
- (4) MF Button (Multifunction Button)
 - Power Saving Mode/Wake Up
 - Play/Pause Music
 - Answer/Reject the Call
 - Transfer the Call
 - Language Selection
 - Factory Reset
 - Voice Assistant (Left Earbud)
 - Ambient Sound Mode (Right Earbud)
 - Volume Up (Right Earbud)
 - Volume Down (Left Earbud)
 - Next Song (Left Earbud)
- (5) Microphone



INTRODUCTION

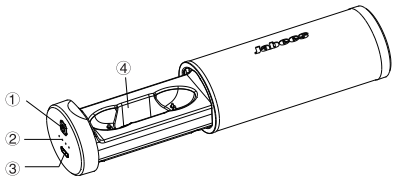
Thank you for purchasing Jabees Firefly Bluetooth True Wireless Stereo Earbuds. This manual will help you to accurately operate Firefly, but you should familiarize yourself with the Bluetooth function of your mobile phone or other devices before using the True Wireless Earbuds Firefly.

FAST CHARGING THE EARBUDS

Firefly supports Fast Charging. By charging 10 mins, you get 2 hrs of music playback time. To fully charge the earbuds, it takes less than 30 mins.

Firefly have charging contact points on the earbud bodies and the Charging Case for storage and charging.

1. Place the Firefly into the charging slots of the Charging Case individually.
2. The earbuds start to get charged automatically, and the red indicator LED light will show when charging.
3. When the battery is fully charged, the white LED light turns on for around 16 seconds and then turns off.



- (1) POWER ON for charging
- (2) LED indicators of Battery Capacity
- (3) Input for charging the Power Pack
- (4) Earbuds Charging Slots

CHARGING THE CHARGING CASE

The Charging Case has a built-in 500mAh battery. It provides approximately 3 additional charges for the 2 earbuds. The 4 LED Indicators show remaining battery capacity. Please charge the Charging Case when it is running out of power.

1. Plug one end of the USB charging cable into the charging port of the Charging Case, and put the other end into your computer or AC charger with USB port.
2. When the Charging Case is fully charged, 4 LED Indicators will show in solid green.
3. It takes about 2 hours to fully charge the Charging Case.

LED Indicator of Battery Capacity (During charging the Earbuds & Being Charged)

Battery Capacity	LED 1	LED 2	LED 3	LED 4
0-25%	Flashing	Off	Off	Off
25%-50%	On	Flashing	Off	Off
50%-75%	On	On	Flashing	Off
75%-99%	On	On	On	Flashing
99%-100%	On	On	On	On

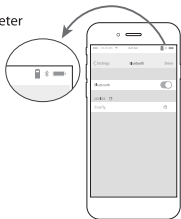
WHEN THE BATTERY IS LOW

You will hear the voice prompt "Low Battery Please Charge". At this point please charge the Firefly.

You can also refer to the Battery Meter on iPhone and other iOS devices.

NOTE

The Battery Meter only shows the remaining battery capacity of the Left Earbud. So if the Right Earbud is running out of power, it won't be reflected on the Battery Meter.



IMPORTANT

- For the first use, please make sure to fully charge the Firefly beforehand.
- You must recharge Firefly if they haven't been used for more than 12 months.
- You must use the authorized charger to charge up Firefly.

MULTIFUNCTION BUTTON

- **General:** Power Saving/Wake up; Answering/Ending/Rejecting/Redialing/Transferring calls; Playing/Pausing the Music; Language Selection; Factory Reset; Pairing.
- **Left Earbud:** Volume Down; Voice Assistant - Activating Siri and Google Assistant.
- **Right Earbud:** Volume Up; Ambient Sound Mode.

TURNING THE EARBUDS ON/OFF

Firefly supports Auto Power On/Off, you don't need to press any button to turn on/off the earbuds.

To turn on Firefly:

Take out the earbuds from the Charging Case. The white LED light flashes with a voice prompt. The earbuds are now turned on automatically.

To turn off Firefly:

Place the earbuds into the Charging Case and the earbuds are turned off automatically.

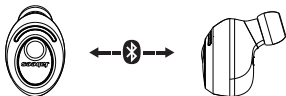
NOTE

When the 2 earbuds enter in-sync mode, putting the left earbud into the charging case will turn the right earbud into pairing mode if it hasn't been connected to your phone before. If you place the Right Earbud into the Charging Case, the Left Earbud will stay connected to the mobile phone.

USE Firefly AS A PAIR

STEP 1. In-Sync Wireless Stereo Connection with mobile phone.

- 1) Take out the earbuds from the Charging Case. The LED light flashes in white, now the earbuds are turned on and connected to each other automatically after 3 seconds.
- 2) The Left Earbud will flash in red and white, and is now in pairing mode for a mobile phone.

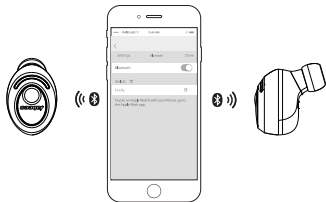


NOTE

If two earbuds fail to connect to each other automatically when taking them out from the Charging Case, you will need to press and hold the MF Buttons of both earbuds for about 2 seconds until you see the LED flashes in red and white, then the earbuds go into pairing mode. If this doesn't help, please refer to the Factory Reset.

STEP 2. Connecting with Mobile Phone or Other Bluetooth Devices.

- 1) Turn on the Bluetooth function of your mobile phone or other Bluetooth devices, start searching for the Bluetooth devices on your mobile phone. Select 'Firefly' to complete the connection.
- 2) If your phone asks for passkey or PIN-code, confirm with '0000' (4-zero).



NOTE

1. When Firefly enter in-sync mode they do not support Multipoint connection for 2 phones.
2. When the Left Earbud is out of power, the Right Earbud will turn into pairing mode if it hasn't been connected with your phone before. If the Right Earbud has been paired and connected with your mobile phone before, it will be connected with your mobile phone automatically.
3. When the Right Earbud is out of power, the Left Earbud will remain connection to the mobile phone so you can use the Left Earbud individually.

USE Firefly INDIVIDUALLY

You may need to repeat the pair and connect Firefly procedure with your mobile phone or other Bluetooth devices if you want to use each earbud individually.

1. How To Pair And Connect With The 1st Mobile Phone.

- 1) Take out one earbud from the Charging Case to turn on Firefly, the LED light flashes in white, then double click the MF Button, the LED light flashes in red and white, the earbud enters into pairing mode and the LED light flashes in white after pairing.
- 2) Turn on the Bluetooth function of your mobile phone or other Bluetooth devices, start searching for the Bluetooth devices on your mobile phone. Select 'Firefly' and follow the instruction. If your phone asks for passkey or PIN-code, confirm with '0000'(4-zero).
- 3) When Firefly and your mobile phone are paired and connected, you will hear the voice prompt.

NOTE

If no pairing is possible for a period of time (approximately 5 minutes), the earbud will turn into Power Saving Mode automatically.

2. How To Pair And Connect With The 2nd Mobile Phone.

Firefly support Multipoint Technology for 2 phones when the connection is used for individual earbud.

- 1) Pair and connect Firefly with the 1st mobile phone. (Please refer to the '1. How To Pair And Connect With The 1st Mobile Phone'.)
- 2) Turn off Firefly.
- 3) Turn off the Bluetooth function of the 1st mobile phone.
- 4) Turn on Firefly, pair and connect the earbud with the 2nd mobile phone.
- 5) Turn off Firefly once the connection completed, and turn on again.
- 6) Turn on the Bluetooth function of the 1st mobile phone, the earbud will be connected with both mobile phones automatically.

POWER SAVING SOLUTION

Firefly supports Auto Power On/Off, so it can only be turned on and off via the Charging Case. If you are not carrying the Charging Case but want to manually turn off the earbuds to save the power, you can follow the below Power Saving Solution:

To turn on the Power Saving Mode:

When the earbuds are connected and not in music mode, press and hold the MF button of either earbud for about 5 seconds, the left earbud will flash in red and white, then the earbuds are disconnected and the power saving mode turns on.

To wake up the earbuds:

Short press the MF button of either earbud to wake them up, and they will automatically connect to your phone.

NOTE

1. If the earbuds fail to connect to your phone in 5 mins, they will turn into power saving mode automatically.
2. The earbuds will turn into power saving mode if two earbuds are not connected to each other. For example, the earbuds will lose the connection after factory reset. Under this circumstance, you will have to pair and connect two earbuds manually. Please refer to the 'FACTORY RESET' in this manual.

MAKING CALLS

Once Firefly are successfully connected to your mobile phone, you can use them to make and receive calls. Please consult your mobile phone's manual for more information.

DIAL BY THE PHONE KEYS

Enter and dial the number on your mobile phone as you normally do. Once the call has been set up, the sound will be transmitted to your Firefly automatically.

ANSWERING/ENDING/REJECTING CALLS

When the earbuds are turned on, and there is an incoming call, you will hear a musical tone.

- Press MF Button to answer the call.
- Press MF Button to end the call.
- Long press MF Button for 2 seconds to reject the call.

PUT THE CALL ON HOLD

Press and hold the MF Button for 2 seconds to put the current call on hold and accept the call waiting. Short press the MF Button to hang up current call and resume to the first call.

VOICE BROADCAST FUNCTION

Firefly supports voice prompts and reading incoming number.

TRANSFERRING CALLS

During both incoming call and outgoing call state, you can double click MF Button to transfer the call to the mobile phone. If you want to transfer the call back to Firefly, double click MF Button again. More procedures may be involved for some mobile phones.

ADJUSTING THE VOLUME

You can increase/decrease the volume by MF button on two earbuds or your mobile phone.

Increase Volume: Press and hold the MF button on the Right Earbud.

Decrease Volume: Press and hold the MF button on the Left Earbud.

NOTE: When use Firefly individually, you will need to increase/decrease the volume through your mobile phone.

PLAYING/PAUSING MUSIC

Playing Music: Short press the MF Button.

Pause Music: Short press the MF Button.

Next Song: Double click the MF Button on the Left Earbud to play the next song when playing music.

VOICE ASSISTANT

Double click the MF Button of the Left Earbud to activate Siri or Google Assistant.

NOTE: 1. The Voice Assistant cannot be activated when making calls or listening to music.

2. You may encounter the problem to wake up Google Assistant from lock screen or when the screen is off. If so, please unlock the screen and try again.

AMBIENT SOUND MODE

Double click the MF Button of the Right Earbud to activate the Ambient Sound Mode so you can stay aware of your surrounding while enjoying music and handsfree call.

NOTE: Ambient Sound Mode cannot be activated when Firefly is not in-sync mode.

LANGUAGE SELECTION

Firefly supports voice prompt in English and Chinese.

1) Turn off the Bluetooth function of the connected mobile phone if any. Take out one earbud from the Charging Case, it will turn on and turn into Power Saving Mode automatically.

2) Short press the MF Button to wake it up, and it will turn into pairing mode.

3) Double click the MF Button of the earbud, the language will be switched to another language.

You will need to repeat this procedure to change the language of the second earbud.

CONNECTING WITH A PC

You can connect Firefly with the Bluetooth enabled PC. Please refer to the user manual of your Bluetooth enabled PC for setup information.

FACTORY RESET

To restore the earbuds to factory setting, put the earbuds back into the charging case and make sure they are being charged. Double click the MF Buttons on both earbuds, the LED lights flash in red and white twice, then the factory reset is successful.

NOTE: After the factory reset, you will have to pair and connect two earbuds manually:

1. Take out the earbuds from the Charging Case and they will be turned on automatically.

2. Press and hold the MF button of each earbud for 2 seconds, the LED light flashes in red and white, they are now in pairing mode.

3. When the connection is successful, the left earbud will flash in red and white, while the right earbud flashes in white.

GUARANTEE

Jabees is a registered trademark of FreeTek International Co., Ltd. Other brands and product names are trademarks of their respective owners. Jabees warrants this product against all defects in material and workmanship for a period of twelve (12) months from the date of original purchase of the product. The conditions of this guarantee and the extent of responsibility of Jabees under this guarantee can be read in the Warranty Card.

WARNING

Permanent hearing loss may result from long-term exposure to sound at high volumes. Use as low a volume as possible and avoid prolonged use of the earphone at excessive levels. Please read the safety guidelines below prior to using this earphone.

Prior to using this product follow these steps

1. Before putting on the earphone, turn the volume control to its lowest level.
2. Put the earphone on, and then slowly adjust the volume control to a comfortable level.

During the use of this product

1. Keep the volume at the lowest level as possible.
2. If increased volume is necessary, adjust the volume control slowly.
3. If you experience discomfort or ringing in your ears, immediately discontinue using the earphone. With continued use at high volume, your ears may become accustomed to the sound level, which may result in permanent damage to your hearing without any noticeable discomfort.

SAFETY INFORMATION

1. If you have a cardiac pacemaker or other electronic medical equipment, you should consult your physician before using this product.
2. This product contains small parts that may be hazardous to children. Keep out of the reach of children. The bags themselves or the many small parts they contain may cause choking if ingested.
3. Never attempt to disassemble the product yourself, or push other objects into this product, as this may cause a short circuit, which could lead to fire or electrical shock.
4. None of the components can be replaced or repaired by users. Only an authorized dealer or service center may open the product.
5. If any parts of your product require replacement for any reason, including normal wear and tear or breakage, please contact your dealer.
6. If the product overheats, has been dropped or damaged or has been submerged in a liquid, discontinue use.

REMEMBER

Drive safely, avoid distractions and follow local laws.