

Jabees®

Love Life Love Music

Beebud

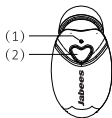
Quick Reference Guide

www.jabees.com

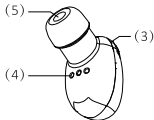
Beebud is a V5.0 Bluetooth Stereo Earbuds supporting True Wireless Stereo Technology, voice prompt in Chinese, English and other features specified in this QRG.

OVERVIEW of Beebud

- (1) LED Light
- (2) MF Button (Multifunction Button)
 - Turn Off
 - Play/Pause Music
 - Answer/Reject the Call
 - Redial
 - Transfer the Call
 - Language Selection
 - Volume Up/Down (Right Earbud)
 - Next Song (Left Earbud)
- (3) Microphone
- (4) Charging Contact Points
- (5) Speaker



(Front)



(Back)

INTRODUCTION

Thank you for purchasing Jabees Beebud True Wireless Stereo Earbuds.

This manual will help you understand the operation of your Bluetooth headphones. You should also familiarize yourself with the Bluetooth function of your mobile phone or other devices before using the Beebud Bluetooth headphones.

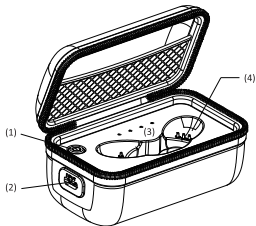
CHARGING THE BATTERY

Beebud have charging contact points on the earbud bodies and the Charging Case for storage and charging.

CHARGING THE BEEBUD BLUETOOTH STEREO EARBUDS

1. Place the Beebud into the charging slots of the Charging Case individually, the earbuds will be charged automatically.
2. The LED light of the Charging Case will be turned on in green and the red LED light of the earbuds will show when charging.

3. When the battery is fully charged, the red LED lights of two earbuds will show in solid blue. When the charging case goes into non-working mode, the solid blue LED lights of two earbuds will be turned off then.



- (1) POWER ON for charging
- (2) Input for Charging the Charging Case
- (3) LED Indicators of Battery Capacity
- (4) Earbuds Charging Slots

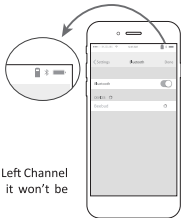
WHEN THE BATTERY IS LOW

You will hear the voice prompt 'Battery Low'. At this point please charge the Beebud.

You can also refer to the Battery Meter on iPhone and other iOS devices.

Remarks:

The Battery Meter only shows the remaining battery capacity of the Left Channel Earbud. So if the Right Channel earbud is running out of power, it won't be reflected on the Battery Meter.



IMPORTANT

- Charge Beebud before your first use.
- You should recharge Beebud if it has not been used for more than 12 months.
- Use only the authorized charger to charge up Beebud.

CHARGING THE CHARGING CASE

The Charging Case has a built-in 500mAh battery. It provides approximately 3 additional charges for 2 earbuds. The 4 green LED indicators show remaining battery capacity. Please charge the Charging Case when it is running out of power.

1. Plug one end of the USB charging cable into the charging port of the Charging Case, and put the other end into your computer or AC charger with USB port.
2. When the Charging Case is fully charged, all 4 LED indicators will show in solid green.
3. It takes about 2 hours to fully charge the Charging Case.

LED Indicator of Battery Capacity (During charging the Earbuds & Being Charged)

Battery Capacity	LED 1	LED 2	LED 3	LED 4
0-25%	Flashing	Off	Off	Off
25%-50%	On	Flashing	Off	Off
50%-75%	On	On	Flashing	Off
75%-99%	On	On	On	Flashing
99%-100%	On	On	On	On

MULTIFUNCTION BUTTON

Answer/End/Reject/Transfer Calls; Volume Up/Down (Right Earbud); Next Song (Left Earbud); Play/Pause Music; Redial; Language Selecting; Factory Reset; Pairing.

TURNING Beebud ON/OFF

To turn Beebud on:

Take out the earbuds from the Charging Case. The blue LED light flashes with a voice prompt. The earbuds are now turned on automatically.

To turn Beebud off:

Put the earbuds into the Charging Case and the earbuds are turned off automatically. Or you can manually long press MF button for 5 seconds. The red LED light flashes with a voice prompt. The earbuds are now turned off.

NOTE:

When the 2 earbuds enter in-sync mode, turning off one earbud will cause the other to switch off automatically along with the voice prompt 'Power Off'.

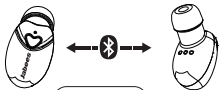
USE Beebud AS A PAIR

STEP 1. In-sync wireless stereo connection with mobile phone.

- 1) Take out the earbuds from the Charging Case. The LED light flashes in blue, now two earbuds are switched on and connected to each other automatically after 3 seconds.
- 2) The left earbud will flash in red and blue, and turns into pairing mode for a mobile phone.

NOTE:

If two earbuds fail to connect each other automatically when taking them out from the charging case, you will need to follow the factory reset instruction to use Beebud.



STEP 2. Connecting with Mobile Phone or Other Bluetooth Devices.

- 1) Turn on the Bluetooth function of your mobile phone or other Bluetooth devices, start searching for the Bluetooth devices on your mobile phone. Select 'Beebud' to complete the connection.
- 2) If your phone asks for passkey or PIN-code, confirm with '0000'(4-zero).



USE Beebud INDIVIDUALLY

You may need to repeat the pair and connect Beebud procedure with your mobile phone or other Bluetooth devices if you want to use each earbud individually.

1. How To Pair And Connect With The 1st Mobile Phone.

- 1) Take out one earbud from the Charging Case to turn on Beebud, the LED light flashes in blue, then double click MF button, the LED lights flash in red and blue, the earbud enters into pairing mode and the LED light flashes in blue after pairing.
- 2) Turn on the Bluetooth function of your mobile phone or other Bluetooth devices, start searching for

the Bluetooth devices on your mobile phone. Select 'Beebud' and follow the instruction. If your phone asks for passkey or PIN-code, confirm with '0000'(4-zero).

3) When Beebud and your mobile phone are paired and connected, you will hear the voice prompt.

NOTE: If no pairing is possible for a period of time (approximately 5 minutes), the earbud will be turned off automatically.

2. How To Pair And Connect With The 2nd Mobile Phone.

Beebud support Multipoint Technology for 2 phones when the connection is used for individual earbuds.

1) Pair and connect Beebud with the 1st mobile phone. (Please refer to the ' 1. How To Pair And Connect With Mobile Phone.')

2) Turn off Beebud.

3) Turn off the Bluetooth function of the 1st mobile phone.

4) Turn on Beebud, pair and connect the earbud with the 2nd mobile phone.

5) Turn off Beebud once the connection completed, and turn on again.

6) Turn on the Bluetooth function of the 1st mobile phone, the earbud will be connected with both mobile phones automatically.

NOTE: When Beebud enter in-sync mode they do not support Multipoint connection for 2 phones.

MAKING CALLS

Once Beebud is successfully connected to your mobile phone, you can use it to make and receive calls. Please consult your mobile phone's manual for more information.

1. Normal Dialing

Enter and dial the number on your mobile phone as you normally do. Once the call has been set up, the sound will be transmitted to your earbuds automatically.

2. Redial

Double click MF Button to redial the last number you called.

ANSWERING/ENDING/REJECTING CALLS

When the earbuds are turned on, and there is an incoming call, you will hear a musical tone.

-Press MF button to answer the call.

-Press MF button to end the call.

-Long press MF button for 2 seconds to reject the call.

PUT THE CALL ON HOLD

Press and hold the MF-button for 2 seconds to put the current call on hold and accept the call waiting. Short press the MF Button to hang up current talk and resume to the first call.

VOICE BROADCAST FUNCTION

Beebud supports voice prompts and reading incoming number.

TRANSFERRING CALLS

To transfer a call from Beebud back to your phone, double click the MF-button. The blue LED light will flash with a 'beep'. If you want to transfer the call back to Beebud, double click MF-button again. More procedures may be involved for some mobile phones.

ADJUSTING THE VOLUME

Beebud supports volume adjustment in reverse cycle. Long press the MF button of the Right Channel earbud to increase the volume and the volume will reverse back to decrease when it reaches the maximum.

PLAYING/PAUSING MUSIC

Playing Music: Short press the MF button.

Pausing Music: Short press the MF button.

Next Song: Press and hold the MF button of the Left Channel Earbud for around 2 seconds to play the next song.

(**Note:** This can only be done by the Left Channel Earbud, and please release your finger when hearing the 'beep'. Keep pressing the MF button will turn the earbud off.)

LANGUAGE SELECTING

Beebud supports voice prompt in English and Chinese. Turning on one earbud and enters pairing mode, then double click the MF button of earbud to select the language you need and listen for the voice prompt. At this time, earbud has been switched to a different language. You will need to repeat this procedure to change the language for second earbud.

CONNECTING WITH A PC OR PDA

You can connect Beebud with a Bluetooth-enabled PC or PDA that supports headphones or hands free profiles. Please refer to the user manual of your Bluetooth-enabled PC or PDA for setup information.

FACTORY RESET

To restore the earbuds to factory setting, double click the MF button when Beebud are placed in the Charging Case. The LED lights flash in red and blue twice, then the factory reset is successful.

NOTE:

After the factory reset, you will have to pair and connect two earbuds manually:

1. Take out the earbuds from Charging Case and they will be turned on automatically.
2. Press and hold the MF button of each earbud for 2 seconds, the LED light flashes in red and blue, they are now in pairing mode.
3. The LED light flashes in blue when the connection is successful.

GUARANTEE

Jabees is a registered trademark of FreeTek International Co, Ltd. Other brands and product names are trademarks of their respective owners. Jabees warrants this product against all defects in material and workmanship for a period of twelve (12) months from the date of original purchase of the product. The conditions of this guarantee and the extent of responsibility of Jabees under this guarantee can be read in the Warranty Card.

WARNING

Permanent hearing loss may result from long-term exposure to sound at high volumes. Use as low a volume as possible and avoid prolonged use of the earphone at excessive levels. Please read the safety guidelines below prior to using this earphone.

Prior to using this product follow these steps

1. Before putting on the earphone, turn the volume control to its lowest level.
2. Put the earphone on, and then slowly adjust the volume control to a comfortable level.

During the use of this product

1. Keep the volume at the lowest level as possible.
2. If increased volume is necessary, adjust the volume control slowly.
3. If you experience discomfort or ringing in your ears, immediately discontinue using the earphone. With continued use at high volume, your ears may become accustomed to the sound level, which may result in permanent damage to your hearing without any noticeable discomfort.

SAFETY INFORMATION

1. If you have a cardiac pacemaker or other electronic medical equipment, you should consult your

physician before using this product.

2. This product contains small parts that may be hazardous to children. Keep out of the reach of children. The bags themselves or the many small parts they contain may cause choking if ingested.
3. Never attempt to disassemble the product yourself, or push other objects into this product, as this may cause a short circuit, which could lead to fire or electrical shock.
4. None of the components can be replaced or repaired by users. Only an authorized dealer or service center may open the product.
5. If any parts of your product require replacement for any reason, including normal wear and tear or breakage, please contact your dealer.
6. If the product overheats, has been dropped or damaged or has been submerged in a liquid, discontinue use.

REMEMBER:

Drive safely, avoid distractions and follow local laws.

NOTE: This equipment has been tested and found to comply with the limits for a Class B digital device, pursuant to part 15 of the FCC Rules. These limits are designed to provide reasonable protection against harmful interference in a residential installation. This equipment generates uses and can radiate radio frequency energy and, if not installed and used in accordance with the instructions, may cause harmful interference to radio communications. However, there is no guarantee that interference will not occur in a particular installation. If this equipment does cause harmful interference to radio or television reception, which can be determined by turning the equipment off and on, the user is encouraged to try to correct the interference by one or more of the following measures:

- Reorient or relocate the receiving antenna.
- Increase the separation between the equipment and receiver.
- Connect the equipment into an outlet on a circuit different from that to which the receiver is connected.
- Consult the dealer or an experienced radio/TV technician for help

Changes or modifications not expressly approved by the party responsible for compliance could void the user's authority to operate the equipment. This device complies with Part 15 of the FCC Rules. Operation is subject to the following two conditions:

- (1) this device may not cause harmful interference, and
- (2) this device must accept any interference received, including interference that may cause undesired operation.