



VIKING DOOR

HOLLOW METAL | FIRE RATED

TELL VIKING DOORS are manufactured from high quality 18 gauge galvanized steel and are thoroughly cleaned inside and out to insure excellent corrosion resistance and paint adhesion. All doors come with a polystyrene core as standard, making every door smoother, flatter, and stronger. Viking Doors come standard with a prime coat, ready to be painted.

STANDARD FEATURES

Door	Available in 18 and 16 gauge: Cold Rolled or Galvanneal
Paint	Prime painted
Hinge Prep	Non-handed 4-1/2" – 7 gauge hinge reinforcements, accommodates heavyweight hinges
Fire Rated	Up to 3 hours are certified by Warnock Hersey
Channels	16 gauge inverted top and bottom channel
Insulation	Polystyrene core
Top Cap	Installed steel cap standard
Closer Prep	14 gauge reinforced steel, standard

OPTIONAL FEATURES

Lock Preps	161 & 00 (Mortise Edge Blank Face)
-------------------	------------------------------------

CERTIFICATIONS

- 3 Hour Intertek / Warnock Hersey, UBC 7-2 (1997)
- ASTM E2074 (200), UL 10(b) (2008), NFPA 252 (2008)
- UL 10(b) Revision 1 (2009), UL 10(c) (2009)
- CAN / ULC S104 (2010)
- Built to SDI Specifications ANSI A250.8
- STC 26 Rating
- ADA Compliant 10" Bottom Rail Standard



FLUSH CAP



NON-HANDED HINGE REINFORCEMENT



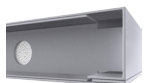
LOCK REINFORCEMENT



SEAM WELDED EDGE



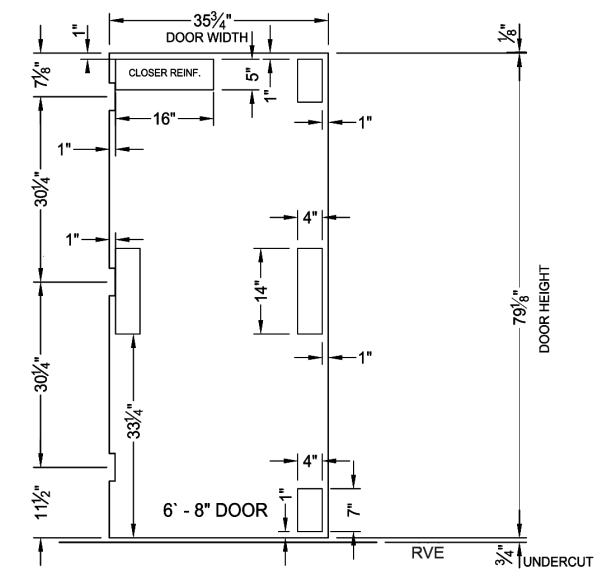
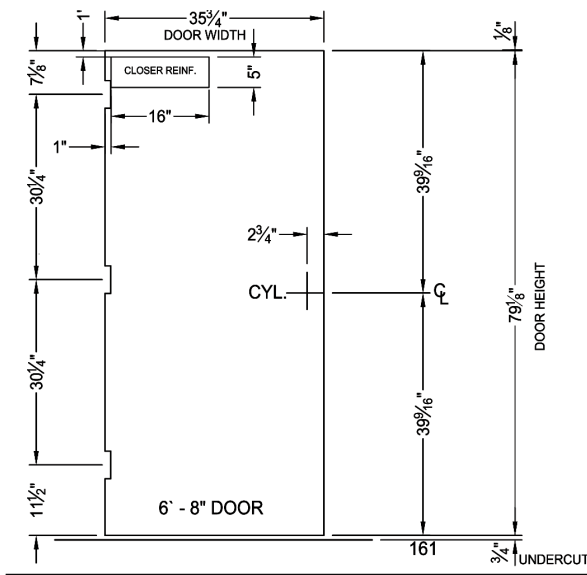
POLYSTYRENE CORE



BOTTOM CHANNEL

Door Dimensions — Fire Rated

3068 Door



3070 Door

