

NINJA LASER

QUICK-START GUIDE

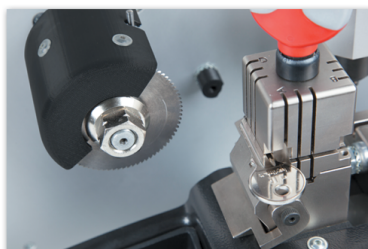


CONTENTS	PAGE #
Machine Registration	1
Powering Up Machine	2
Login/Password Entry	3
Important Machine Notices	4
Cut by Decode-High Security	5-6
Cut by Code - High Security	7-9
Cut by Decode-Edge Cut	10-11
Cut by Code - Edge Cut	12-14
Cut by Decode-Key Blanks	15-16
Cut by Code - Key Blanks	17-18
Cutter Replacement-H.S.	19-21
Cutter Replacement-Edge Cut	22
Tracer Replacement	23-24
Jaw Setup - Tibbe	25-28
Cut by Code - Tibbe	29-31
Software Update Instructions	32-36
Favorites	37
Spare Parts List	38

HIGH SECURITY



EDGE CUT



6-CUT TIBBE



*** IMPORTANT ***

REGISTERING YOUR MACHINE

Thank you for your purchase of the Keyline Ninja Laser.

Before continuing with machine setup and use, please complete the following;

COMPLETE PRODUCT REGISTRATION FORM


Complete enclosed form and fax to 216-803-0202 or e-mail to info@keyline-usa.com. This information is required to activate your warranty and inform you of software updates and new products.

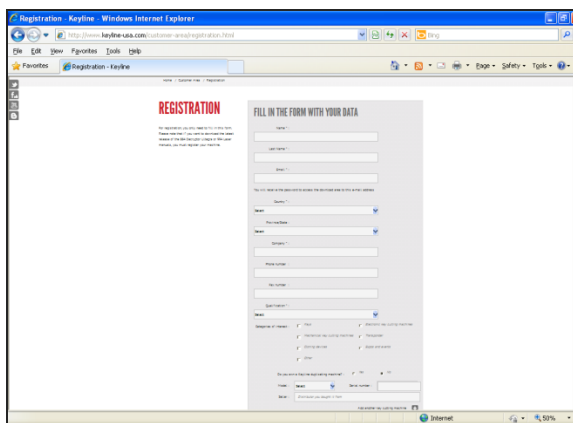
KEYLINE USA PRODUCT REGISTRATION FORM

IMPORTANT
Please complete this form and fax to 216-803-0202 or e-mail to info@keyline-usa.com so that we can register your product and activate your warranty.

Business Name _____
 Customer Name _____
 Address _____
 City _____
 State _____ Zip _____
 Email _____
 Product (i.e. 106, 303, Laser 604, 484) _____
 Serial Number _____
 Distributor Purchased From _____
 What other key machines do you own?
 Please list _____

 Would you like added to our quarterly e-newsletter? _____

 **KEYLINE USA**
 MEMBER OF DODGE TOOL CO.
 www.keyline-usa.com



REGISTER YOUR MACHINE ON THE WEB

Visit **Customer Area** on www.keyline-usa.com then select the **Registration** section. Complete the online form and register each machine you own with the respective serial numbers. Once complete your profile will be set up.

PLEASE NOTE: YOU MUST REGISTER YOUR MACHINE ONLINE TO HAVE ACCESS TO SOFTWARE UPDATES, MANUALS & QUICK START GUIDES.

POWERING MACHINE ON/OFF

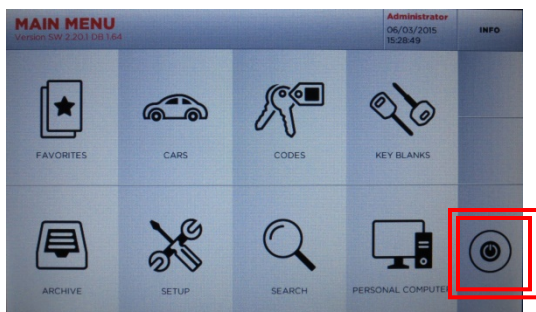
Cable Connection & Powering Machine ON

***MOBILE USERS: YOU MUST USE A PURE SINE WAVE INVERTER WITH 1100 WATTS (or greater) TO POWER THE MACHINE OR MACHINE MOTOR WILL NOT WORK PROPERLY**

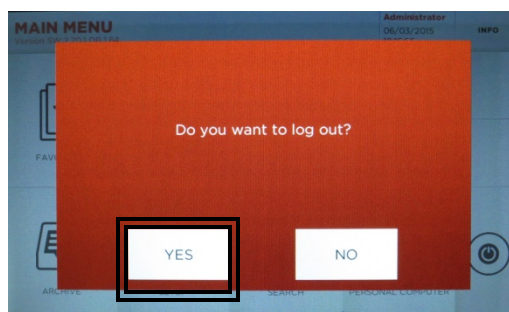
1. Attach the 9-pin connector cable to the port on the **LEFT SIDE** of the console **AND** to the back of the machine. **SECURE WITH ATTACHED SCREWS**. Also, connect the black cable to the console and the back of the machine.
2. Attach power cord to back of machine and plug into a properly grounded outlet.
3. Rotate the Emergency Stop button towards the back of the machine until it releases outward. The machine will now begin to start-up.
4. Press down on the ON/OFF button which will illuminate to RED. **This process can take up to 4 minutes**. Proceed with **LOGIN** (page 4).



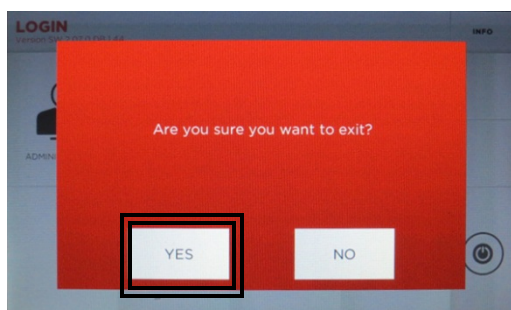
Powering Machine OFF



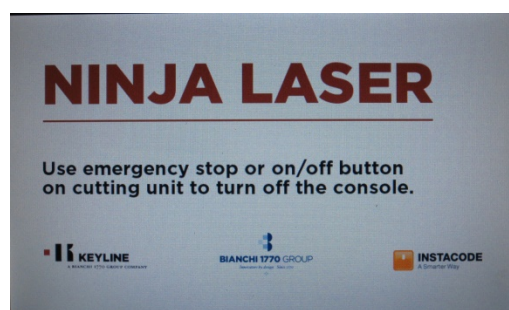
At **MAIN MENU**, select **Power** button



Select **YES** to log out, then select Power button again at Login screen

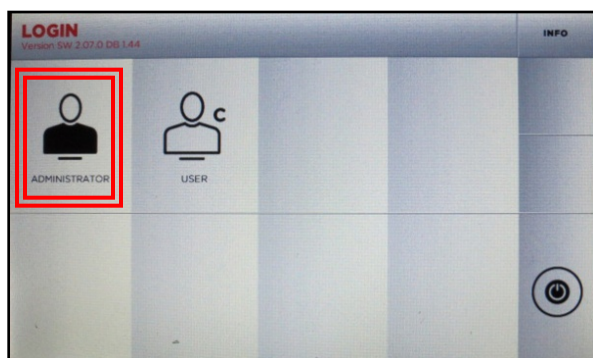


Select **YES** to exit

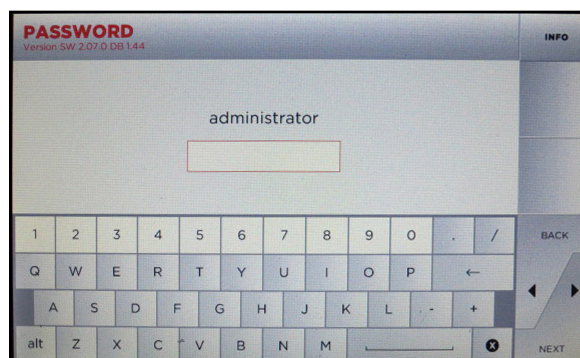


LOGIN / PASSWORD ENTRY

TIP: Use included stylus with touch screen to ensure accurate selections

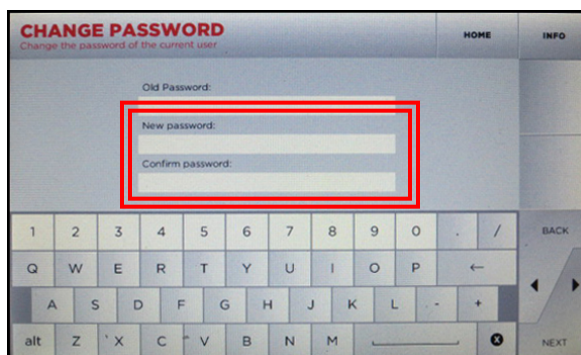
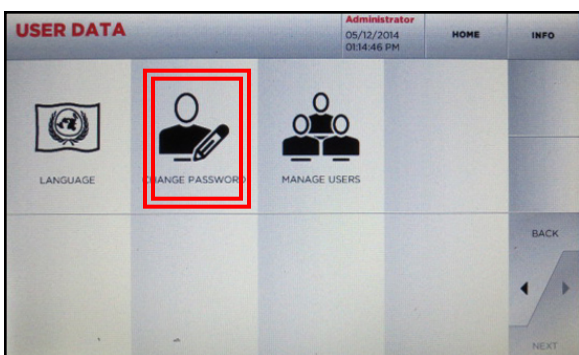
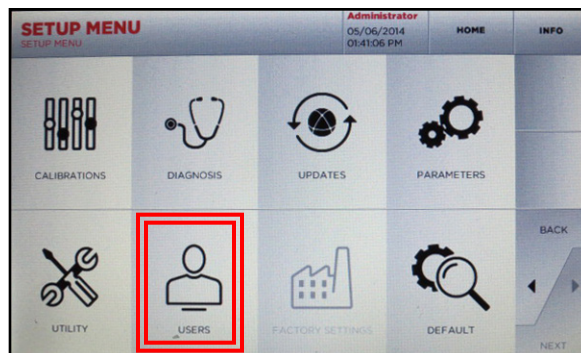
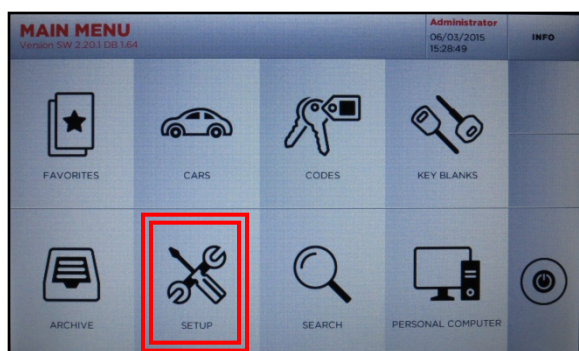


Select **ADMINISTRATOR**



Leave password screen blank, no default password is set, Select **NEXT**. To create password, see below.

PASSWORD CREATION (OPTIONAL) -Skip this section if you do not want a password-



From Main Menu, Select **SETUP**, then **USERS** and then **CHANGE PASSWORD**. At the Change Password screen **enter in your new password and confirm** (leave Old Password line blank) then select **NEXT**. Administrator password is now set.

IMPORTANT

MACHINE CALIBRATIONS

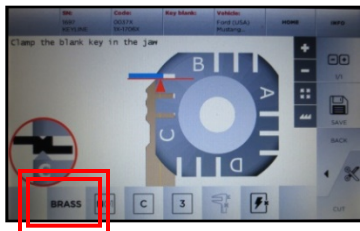
DO NOT CALIBRATE THE JAWS. The Ninja Laser is manufactured to highly precise specifications. Machines and consoles are uniquely paired on initial factory setup. All cutter and jaw calibrations have been performed at the factory matching the jaw to the machine thus making calibrations by the user unnecessary. Consoles and machines cannot be swapped with different versions without consenting Keyline technical team for instructions.

SAFETY SHIELD

The safety shield works in conjunction with the software prompts. The software, before starting some cut and decode procedures, requires the closing of the safety shield. If it is not closed when requested, it will continue to ask its closing. If the user opens the safety shield during an operating phase (for example, when the machine is cutting or decoding a key) it will stop immediately and, at the closing of the shield, the machine will reset the operation and go back to the beginning of the procedure. Make sure to complete all parts of the process (i.e. positioning AC jaw in correct position, securing key on jaw, removing tip stop, etc) at one time, then close the shield before proceeding to the next step. This will avoid having to replicate steps.

KEY MATERIAL

The Ninja Laser defaults to cutting brass keys as the key material type. If you are cutting a different type of metal key, such as steel, nickel silver or aluminum, you can make the selection in the cutting screen. Please note the Ninja Laser cannot cut or decode any type of plastic key, painted keys or keys made of non-conductive materials.



To change the material type, simply touch the BRASS icon on the screen until you reach the desired material; **BRASS**, **STEEL**, **NiSi** (Nickel Silver) or **ALU** (aluminum)

USE OF AFTERMARKET SPARE PARTS

Keyline machines require the use of factory original parts. Aftermarket cutters, tracers and adaptors are not recommended and may cause product damage that will void your machine warranty.

MACHINE PACKAGING

Please retain all machine packaging for transportation purposes. Packaging is specially designed to safely transport the machine and it's components. Keyline is not responsible for providing additional packing material if original boxes are lost, damaged or discarded.

WARRANTY INFORMATION

In Warranty (within 90 days of purchase): Customer will return machine and Keyline USA will reimburse shipping charges. Keyline USA will pay the return shipping back to the customer

In Warranty (91+ days of purchase): Customer will pay to return the machine to Keyline USA. Keyline USA will pay the return shipping back to the customer

Out of Warranty: Customer will pay to return the machine to Keyline USA. Customer will pay the return shipping back to the customer

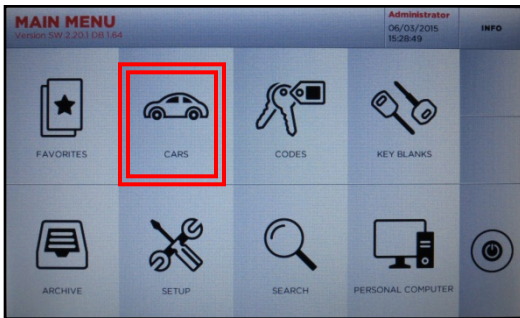
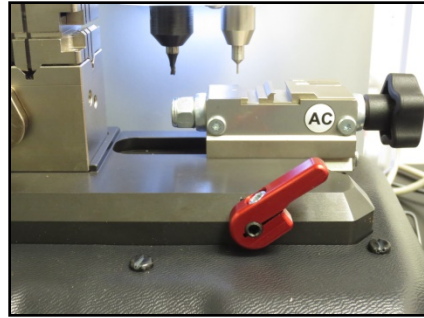
TEMPERATURE

Machine operating temperature is between 32 and 104 degrees Fahrenheit.

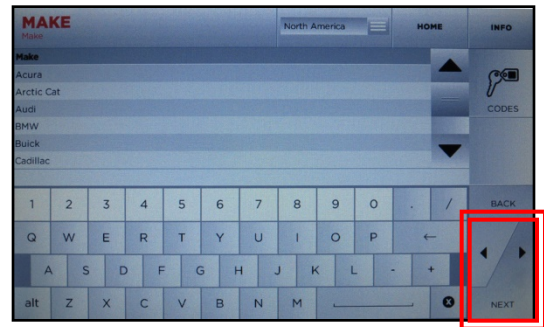
CUT BY DECODE – HIGH SECURITY

NOTE: Make sure AC Jaw is in **DECODE** position on jaw carriage as shown in the picture to the right.

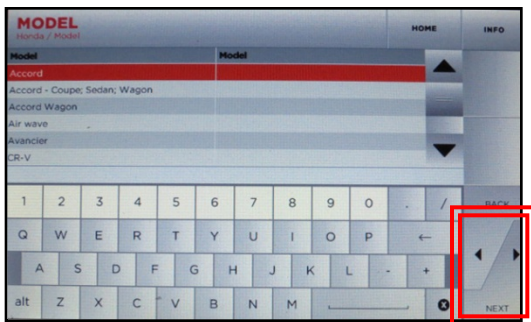
TIP: **DO NOT DECODE PLASTIC KEYS!** Only metal keys can be decoded and cut on the Ninja Laser.



Select **CARS**



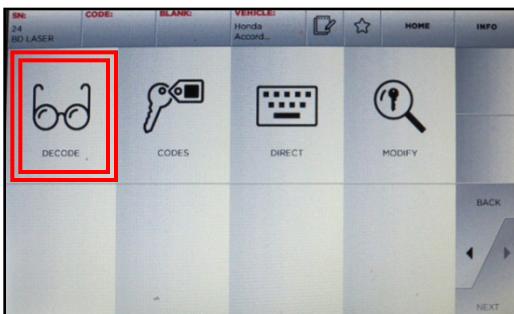
Select **MAKE**, then **NEXT**



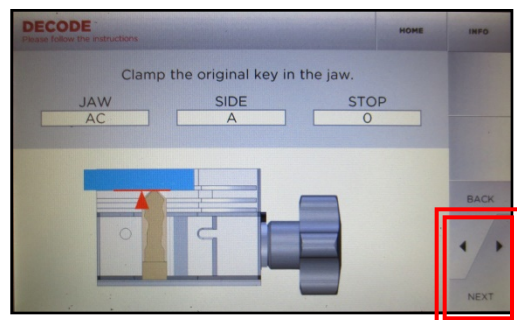
Select **MODEL**, then **NEXT**



Select **YEAR RANGE**, then **NEXT**

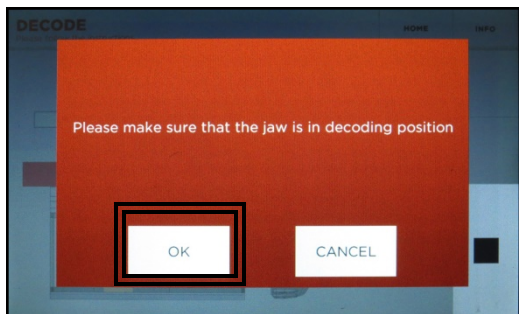


Select **DECODE**, then select **NEXT**

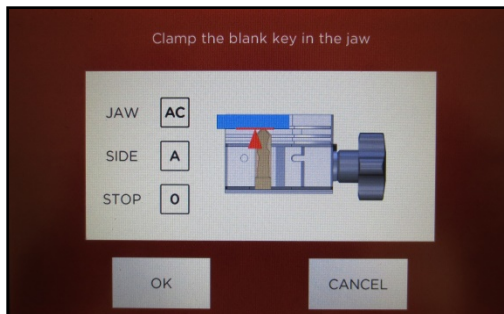


Insert key on jaw, remove tip stop and close shield, then select **NEXT**

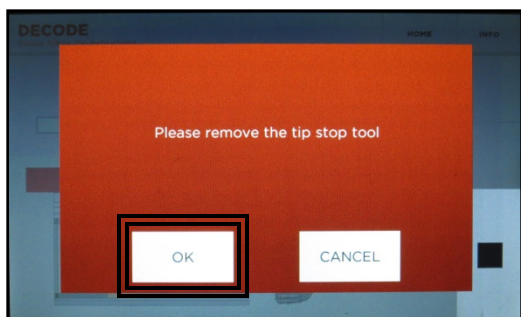
CUT BY DECODE – H.S., cont.



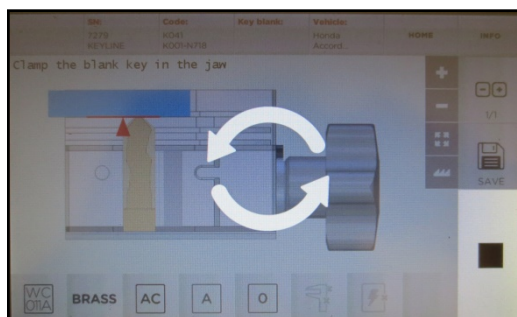
Confirm jaw position, select **OK**



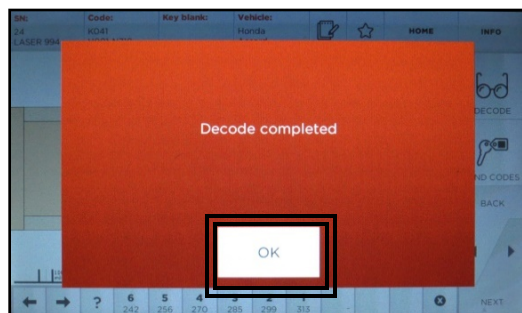
Select **OK**



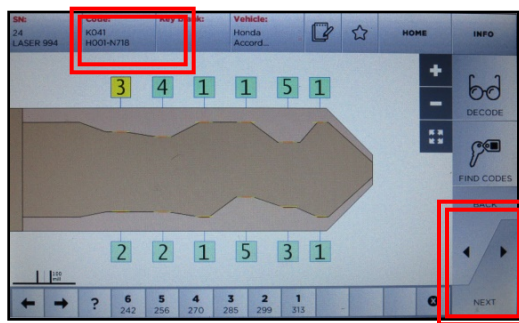
Confirm tip stop tool removal



Decoding in process



Decode complete; Select **OK**



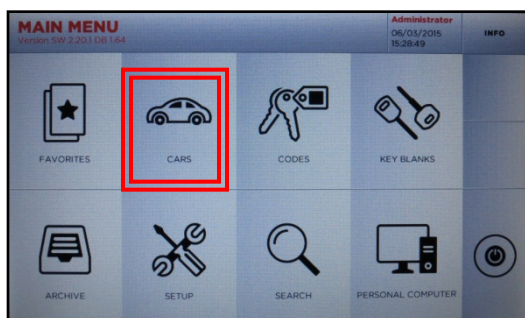
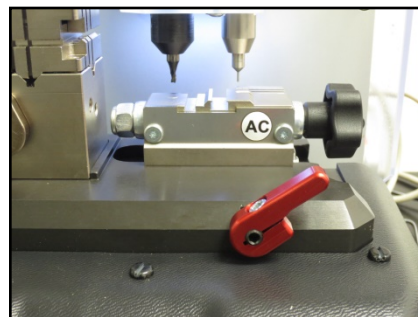
Depths and key code displayed

Select **NEXT**, then proceed with cutting the key by code (refer to Page 8 – CUT BY CODE-H.S., cont. to proceed with cutting)

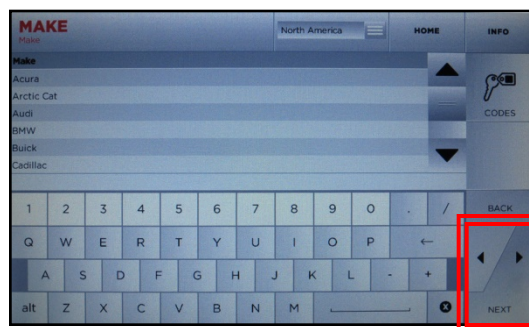
CUT BY CODE – HIGH SECURITY

NOTE: Make sure AC Jaw is in **CODE** position on the jaw carriage as shown in the picture to the right.

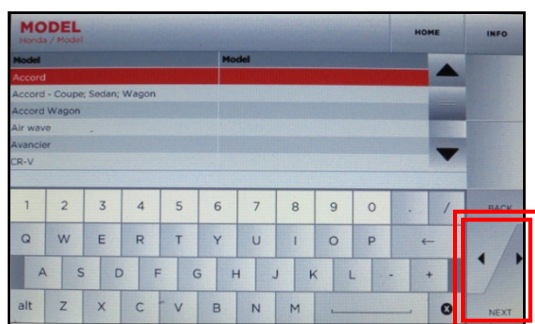
TIP: Cutting a test key is also recommended on first use to verify correct key cutting procedure.



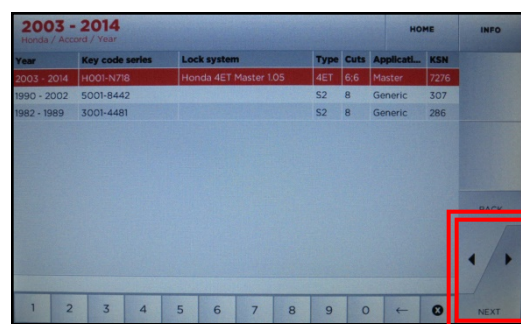
Select **CARS**



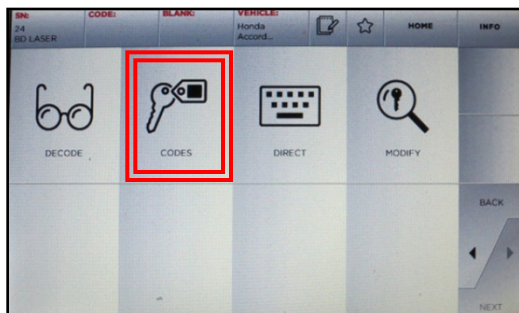
Select **MAKE**, then **NEXT**



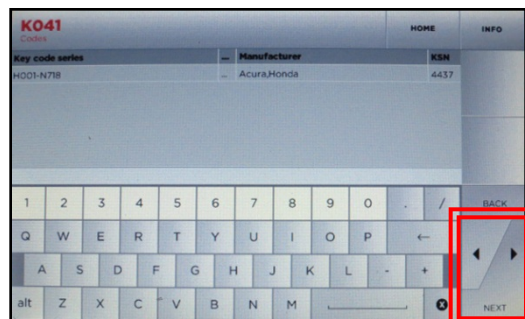
Select **MODEL**, then **NEXT**



Select **YEAR RANGE**, then **NEXT**

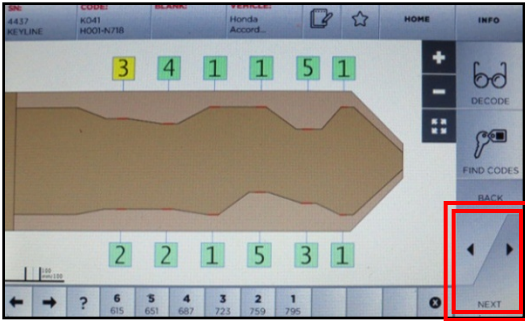


Select **CODES**, then select **NEXT**

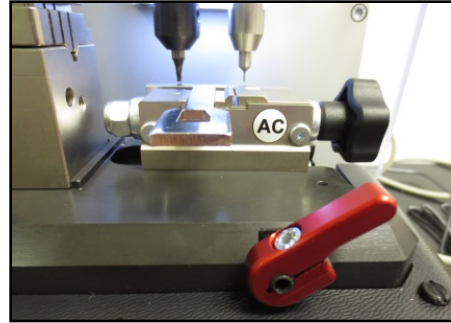


Enter code, (ex. K041), select **NEXT**

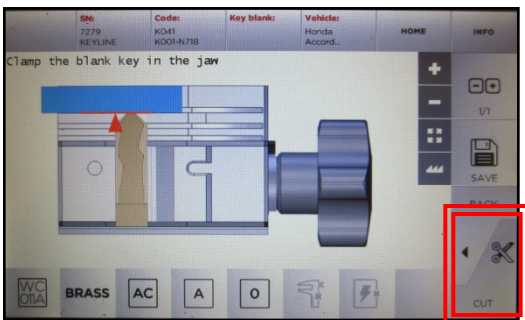
CUT BY CODE – HIGH SECURITY, cont.



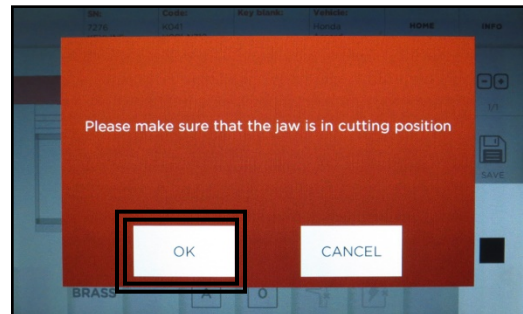
Key depths appear, select **NEXT**



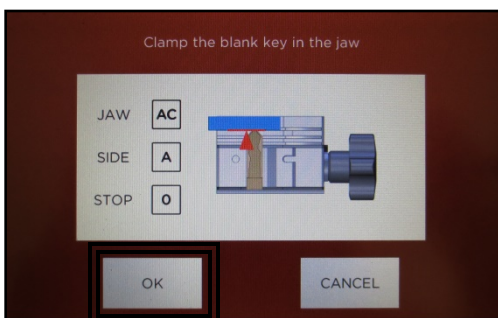
Make sure jaw is in cutting position



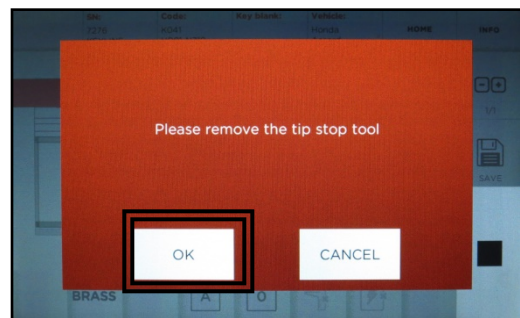
Insert key correctly on jaw, paying close attention to tip stop position (shown in **BLUE**). Tighten down key, then remove tip stop. **Close shield**. When key is ready, select **CUT**



Confirm jaw placement, select **OK**

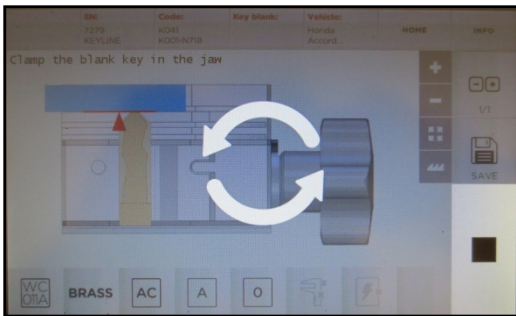


Select **OK**



Confirm tip stop removal tip stop, select **OK**

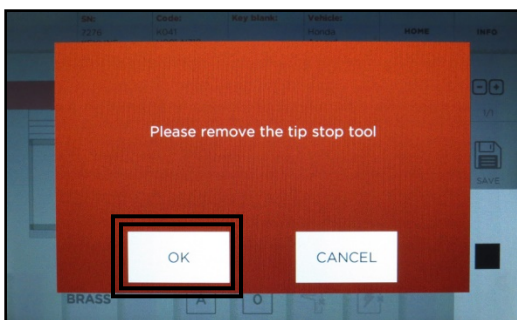
CUT BY CODE – HIGH SECURITY, cont.



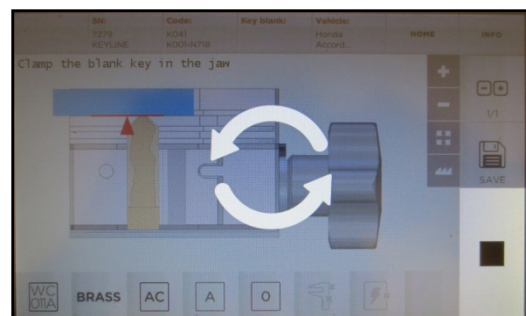
Key cutting begins



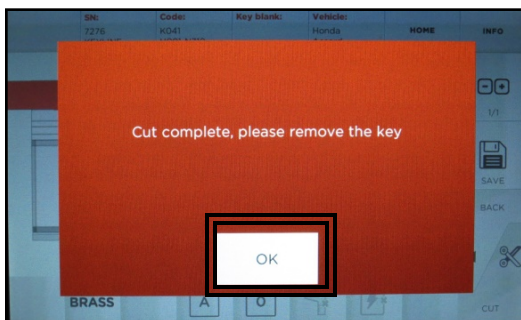
Flip key in jaw, removing key shavings with brush, select **OK**



Confirm removal of tip stop tool, select **OK**



Key cutting begins



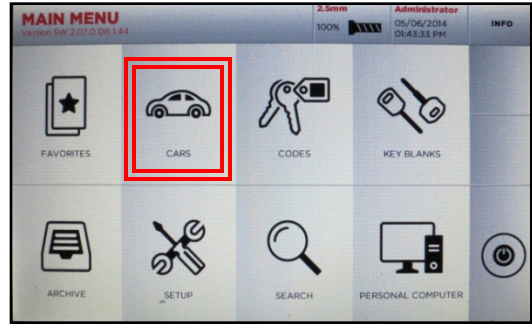
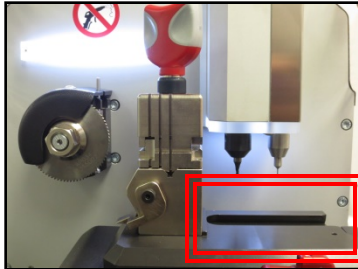
Cut complete

Key cutting complete, select **OK**.

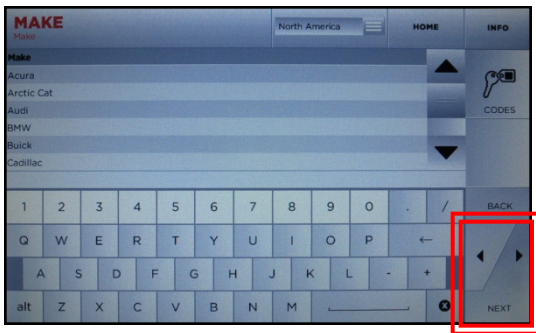
Remove all key shavings from the jaw and select **CUT** to cut additional keys or **HOME** to go back to MAIN MENU.

CUT BY DECODE – EDGE CUT

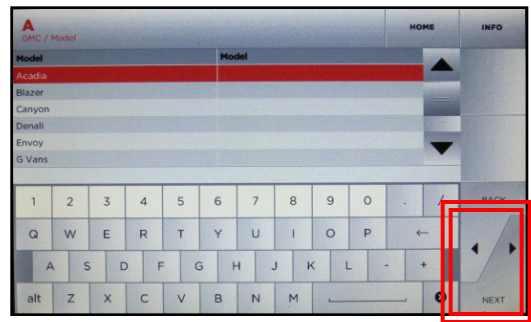
NOTE: When using the edge cut jaw side, the AC jaw (right side) must be removed.



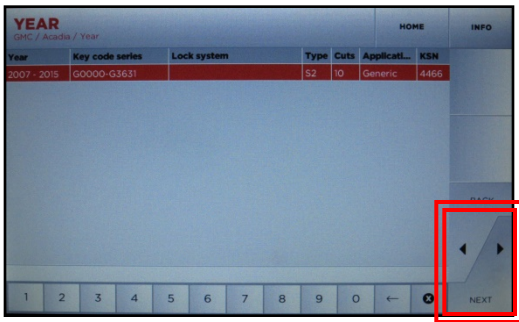
Select **CARS**



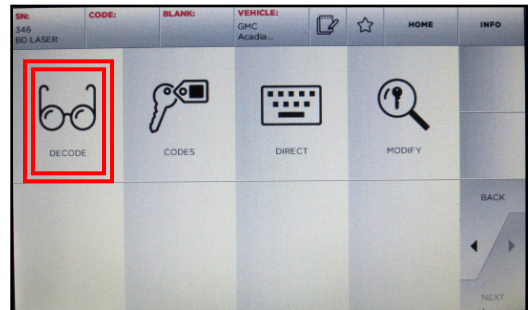
Select **MAKE**



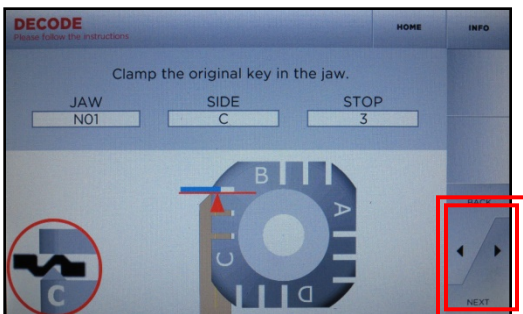
Select **MODEL**



Select **YEAR**

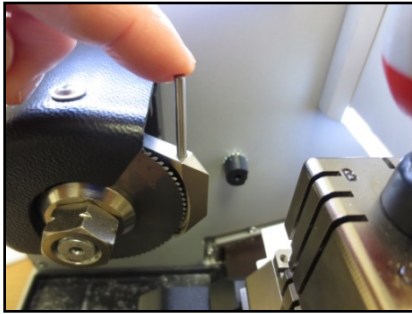


Select **DECODE**

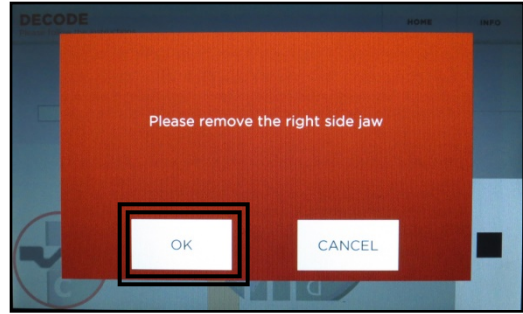


Insert key correctly on jaw, paying close attention to tip stop position (shown in **BLUE**). Tighten down key, then remove tip stop. **Close shield**. When key is ready, select **NEXT**

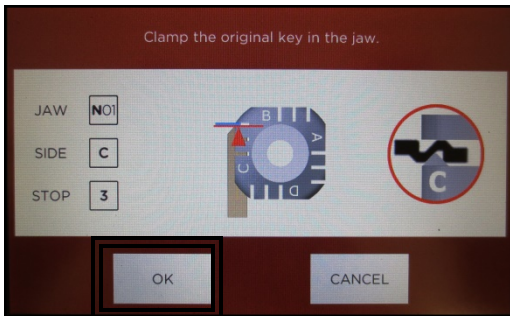
CUT BY DECODE – EDGE CUT, cont.



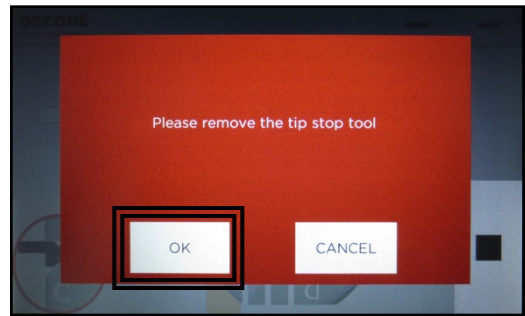
Extract left side tracer as shown



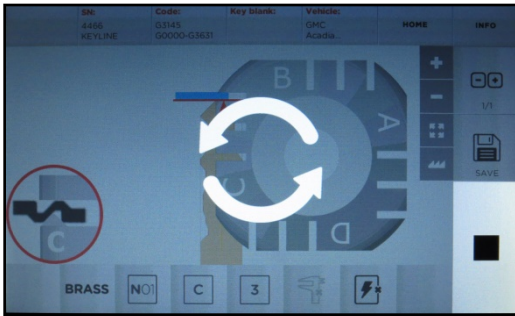
Confirm AC jaw removal, select **OK**



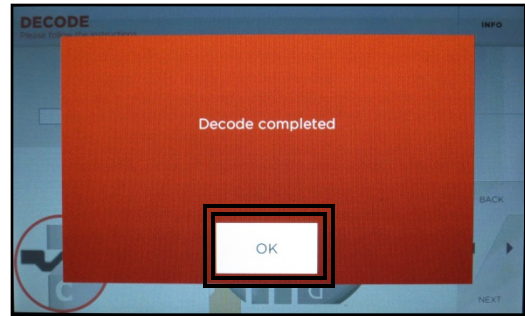
Select **OK**



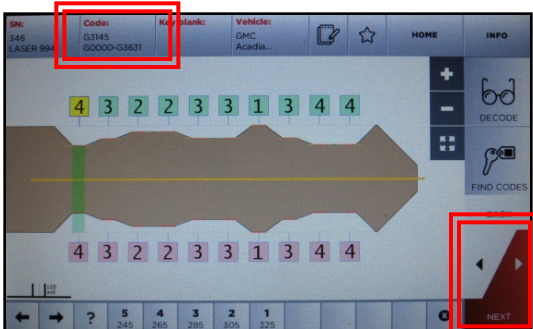
Confirm tip stop removal, select **OK**



Decoding in process



Decode complete; select **OK**

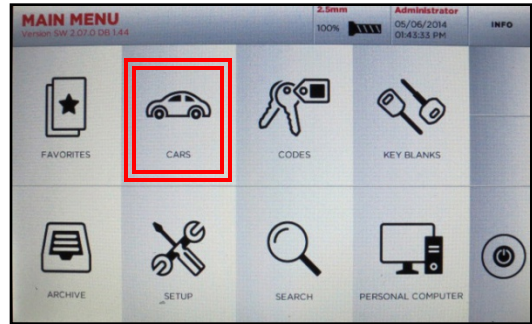
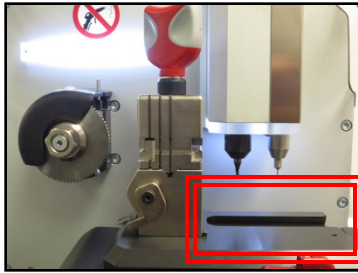


Depths and key code are displayed.

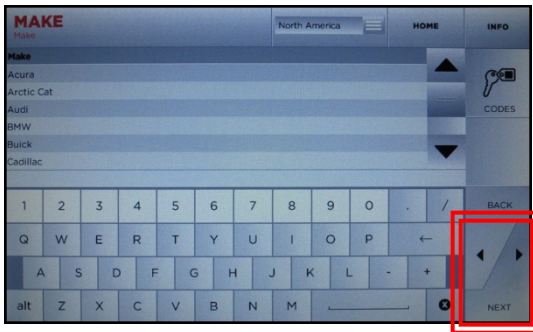
If proceeding to cutting, retract tracer, then select **NEXT** to proceed with cutting the key by code (refer to Page 13 – CUT BY CODE-EDGE CUT).

CUT BY CODE – EDGE CUT

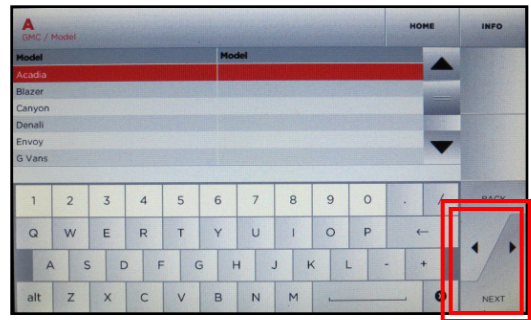
NOTE: When using the edge cut jaw side, the AC jaw (right side) must be removed.



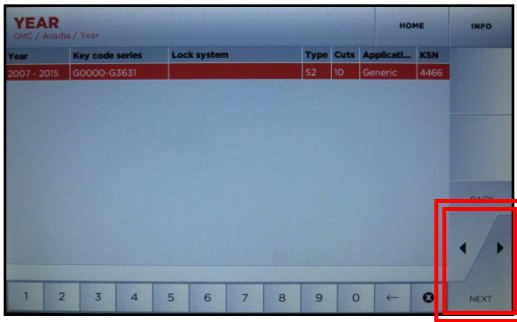
Select **CARS**



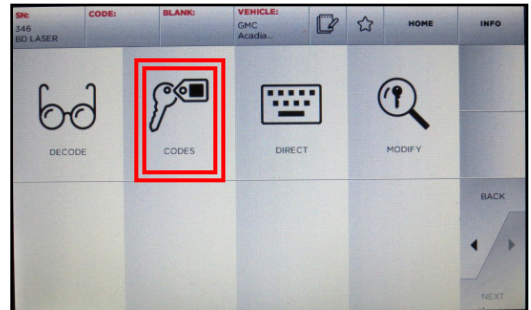
Select **MAKE**



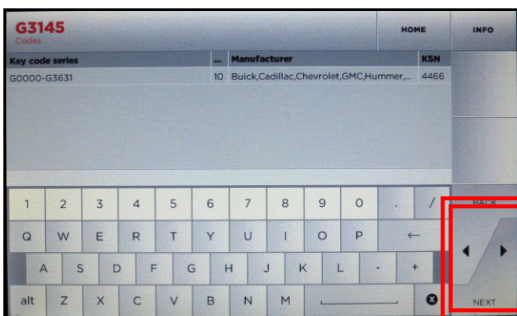
Select **MODEL**



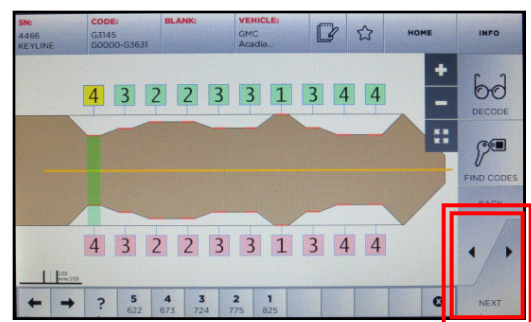
Select **YEAR**



Select **CODES**



Enter code and select **NEXT**



Key depths display, select **NEXT**

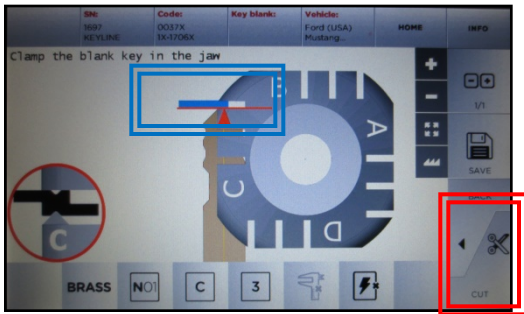
CUT BY CODE – EDGE CUT, cont.

Select the correct jaw side as displayed on screen.

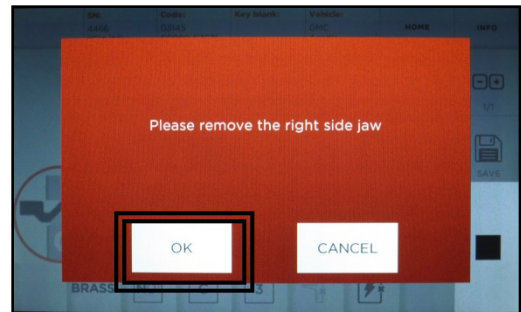
Jaw can be rotated by pulling up on the base of the jaw and rotating to correct side.

Insert tip stop and insert key to correct position as noted in **BLUE**. Tighten down jaw and remove tip stop.

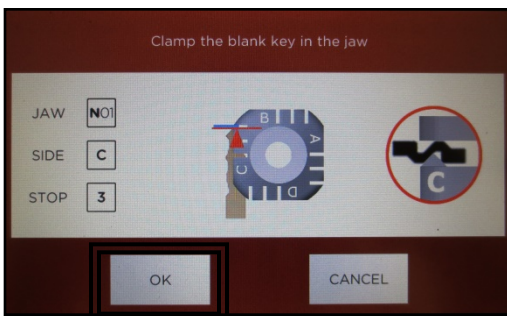
Close shield.



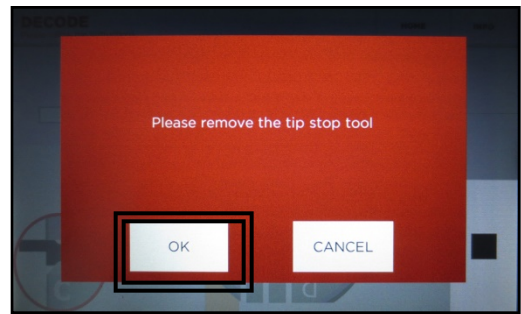
Select **CUT** once ready



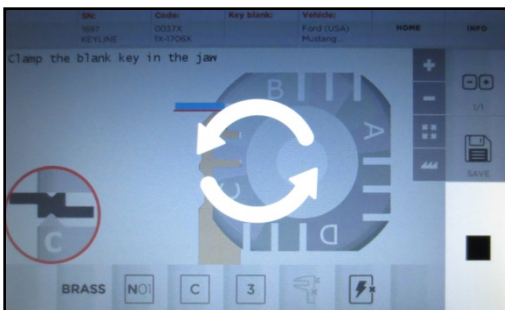
Confirm AC jaw removal



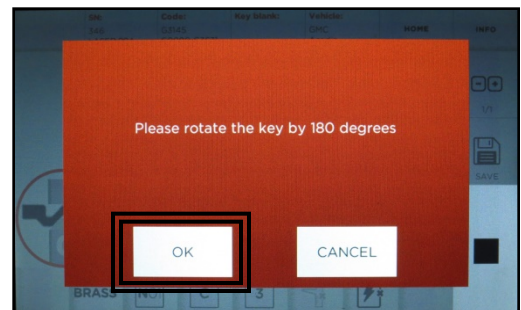
Select **OK**



Confirm tip stop removal

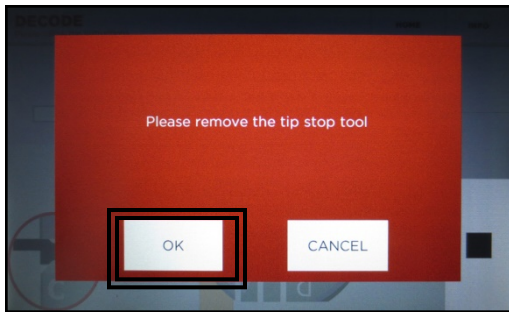


Key cutting begins

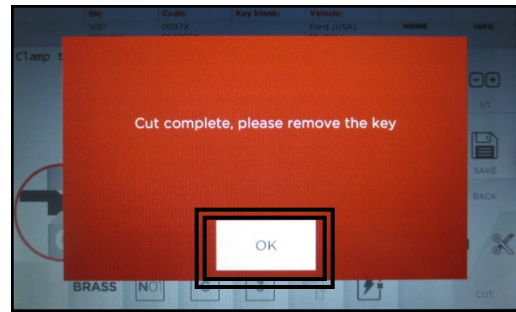


Rotate key and select **OK**

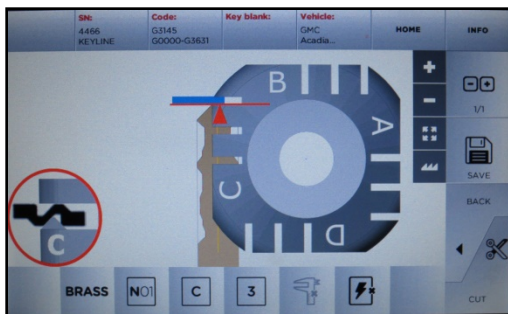
CUT BY CODE – EDGE CUT, cont.



Confirm tip stop removal



Cut complete, select **OK**

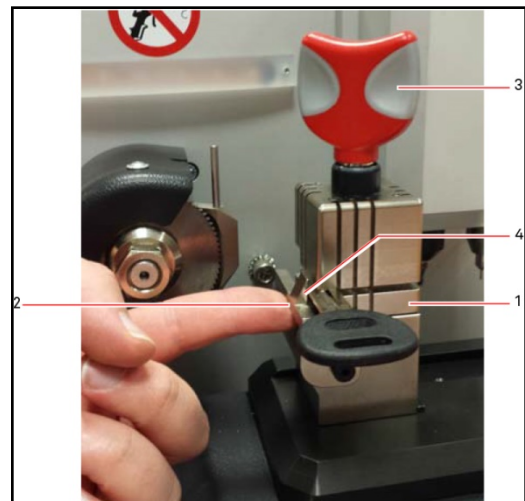


Once key cutting is complete, put additional duplicate key to be cut into jaw and select **CUT**.

If done, select **HOME** to go to Main Menu.

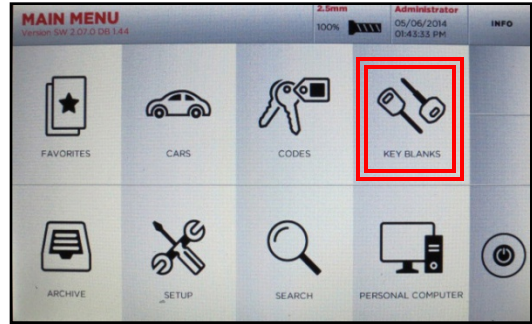
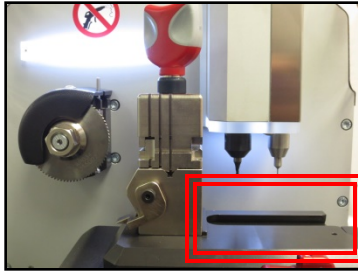
NOTE: if cutting a key with a shoulder stop;

- Insert the key blank into the jaw (1)
- Lift the gauge (2) until it is flush with the shoulder stop (4)
- Tighten the jaw handle (3) to lock the key's position

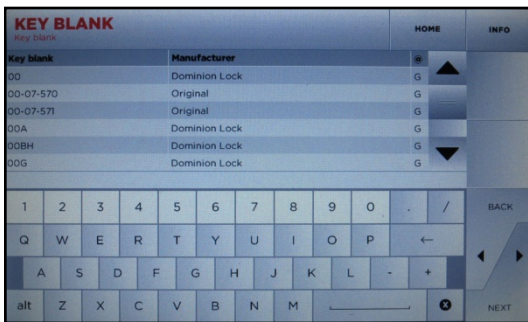


CUT BY DECODE – KEY BLANKS

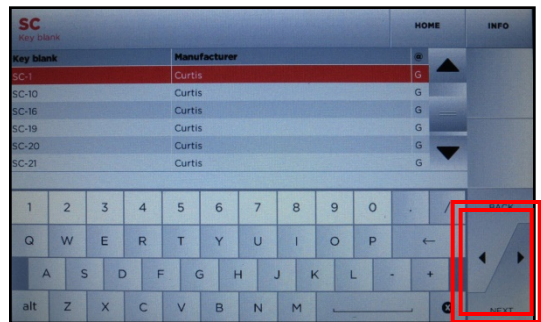
NOTE: When using the edge cut jaw side, the AC jaw (right side) must be removed.



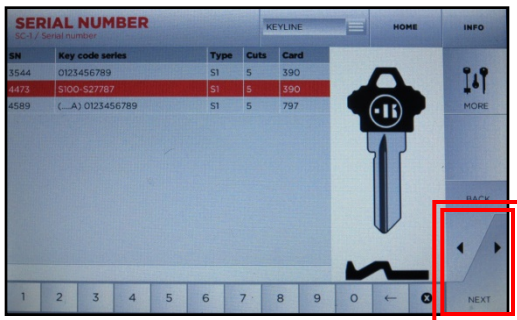
Select **KEY BLANKS**



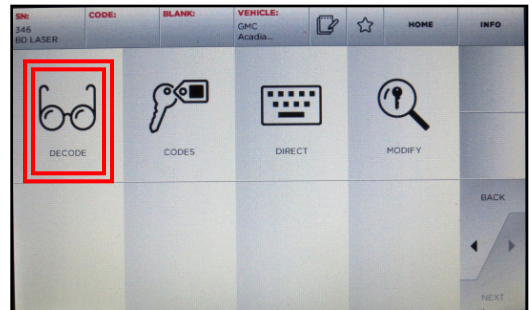
KEY BLANK menu appears



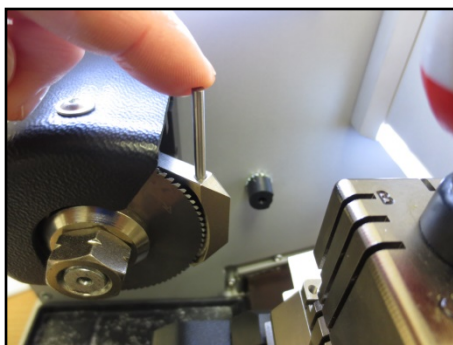
Select desired **KEY BLANK**, then **NEXT**



Select **KEY CODE SERIES**, then **NEXT**



Select **DECODE**

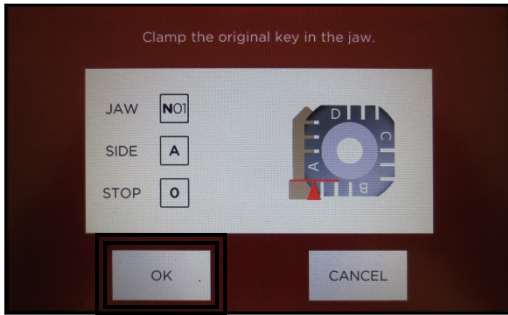


Extract left side tracer as shown

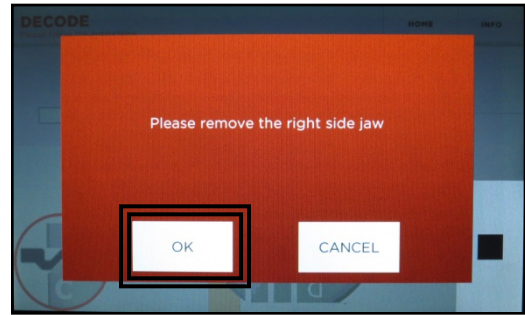


Insert key on jaw, then **remove tip stop**. **Close shield** and select **NEXT**

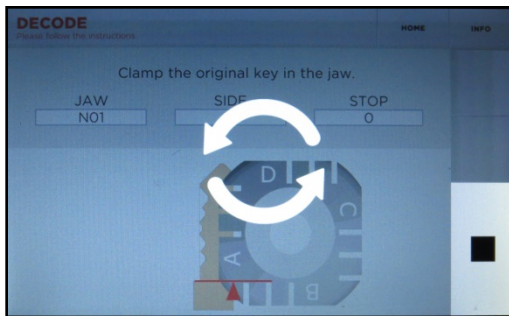
CUT BY DECODE – KEY BLANKS, cont.



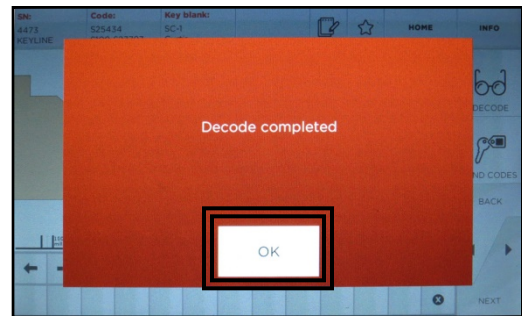
Select **OK**



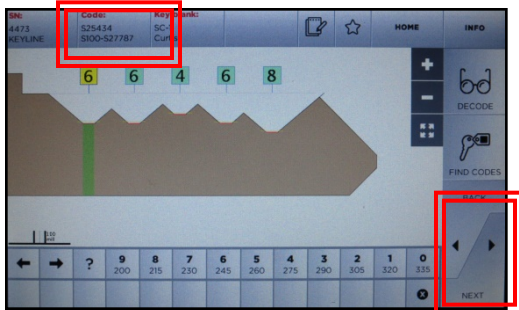
Confirm AC jaw removal, select **OK**



Decoding in process



Decode complete; select **OK**

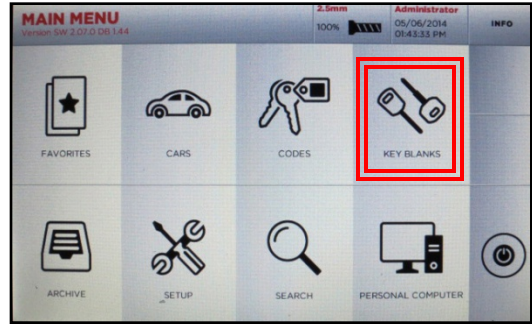
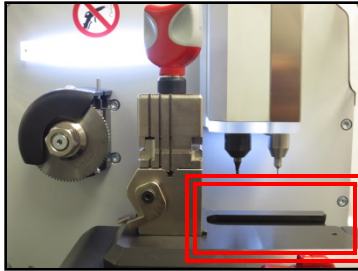


Depths and key code displayed

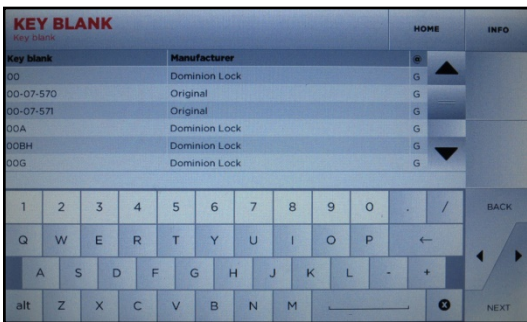
If proceeding to cutting, retract tracer, then select **NEXT** to proceed with cutting the key by code (refer to **Page 18 – CUT BY CODE – KEY BLANKS**).

CUT BY CODE – KEY BLANKS

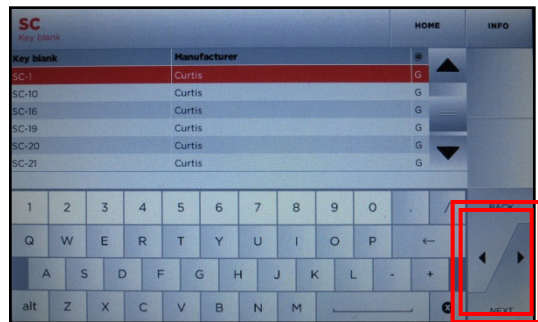
NOTE: Before using the edge cut jaw side, the AC jaw (right side) must be removed.



Select **KEY BLANKS**



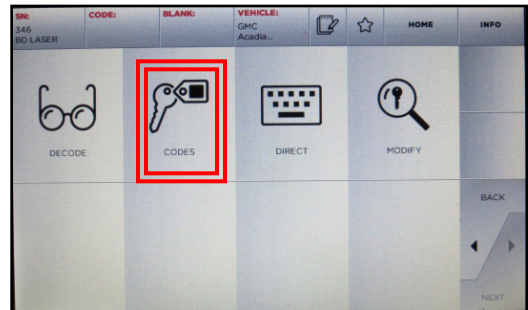
KEY BLANK menu appears



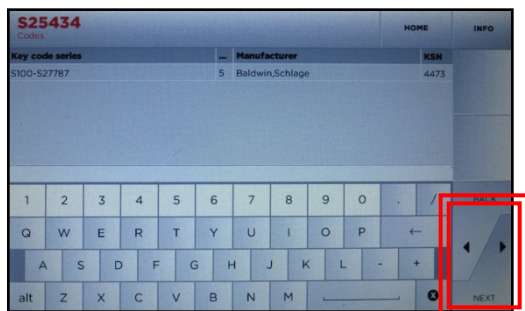
Select desired **KEY BLANK**, then **NEXT**



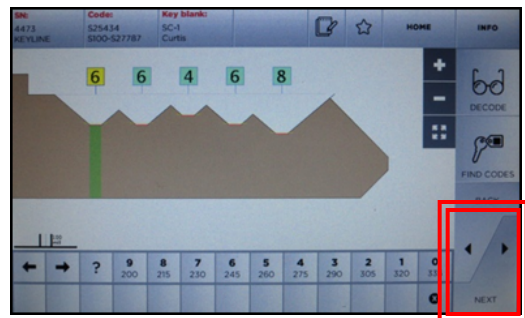
Select **KEY CODE SERIES**, then **NEXT**



Select **CODES**



Enter key code, select **NEXT**

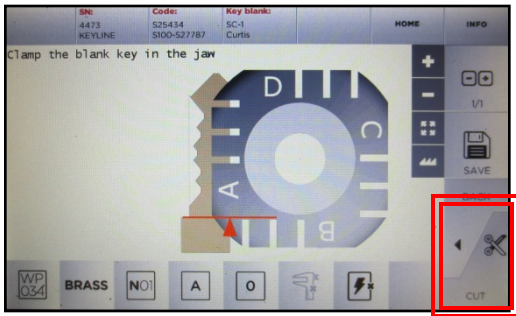


Key depths display, select **NEXT**

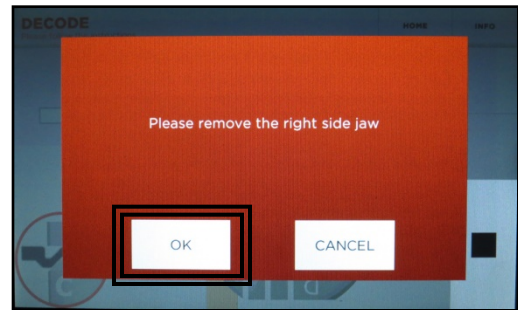
CUT BY CODE – KEY BLANKS, cont.

Select the correct jaw side as displayed on screen. Jaw can be rotated by pulling up on the base of the jaw and rotating to correct side.

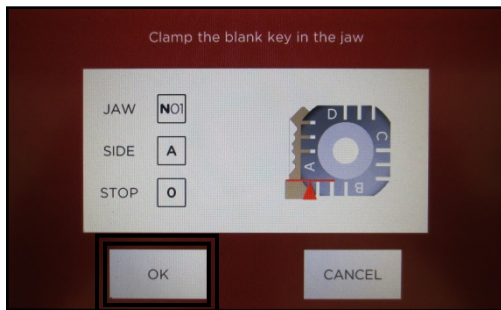
Insert tip stop (if required) or use shoulder stop and insert key to correct position. Tighten down jaw and remove tip stop. **Close shield.**



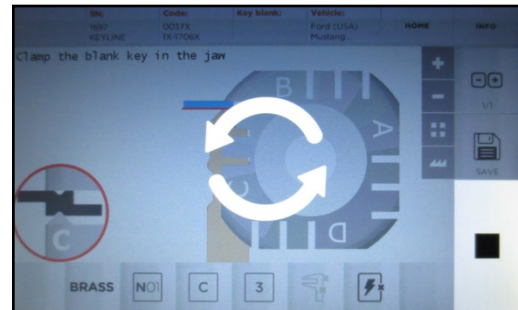
Select **CUT** once ready



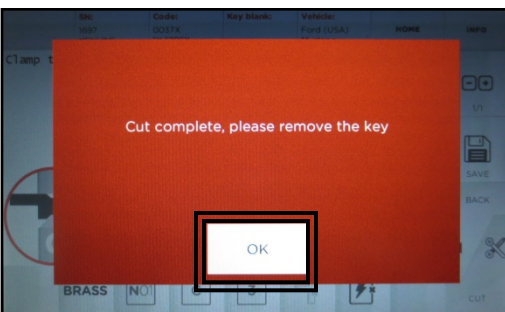
Confirm AC jaw removal



Confirm tip stop removal



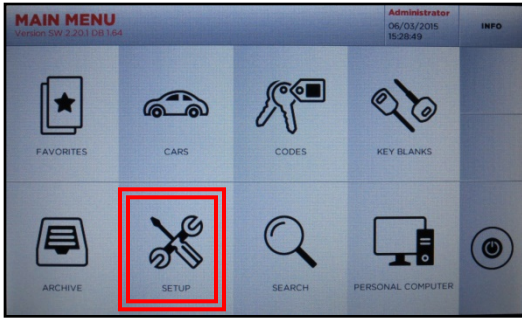
Key cutting begins



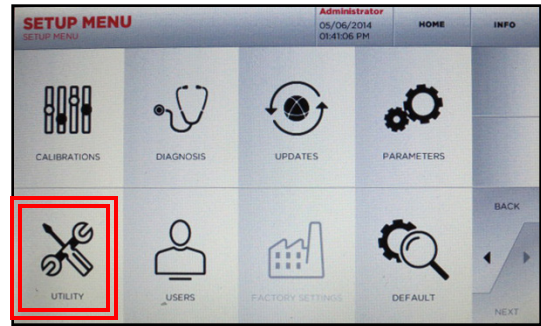
Cut complete, select **OK**

Once key cutting complete, put additional duplicate key to be cut into jaw and select **CUT**.

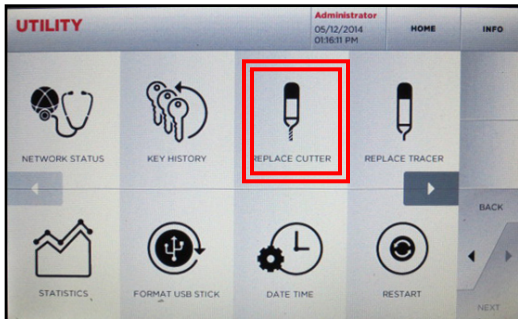
If done, select **HOME** to go to Main Menu.



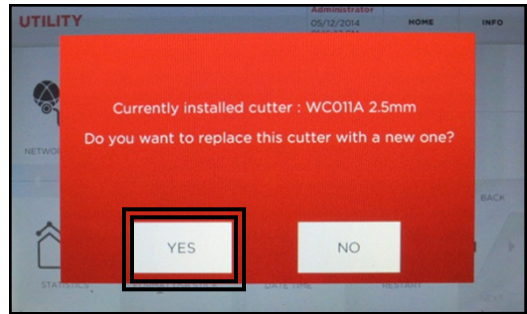
Select **SETUP**



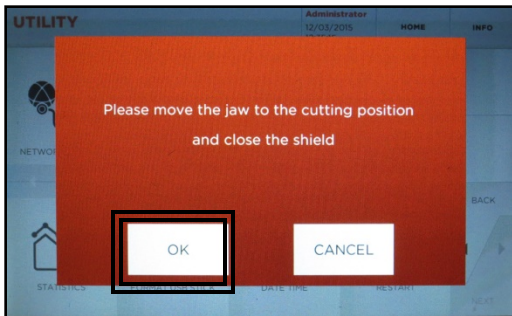
Select **UTILITY**



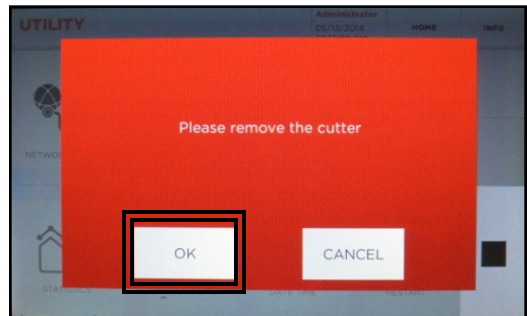
Select **REPLACE CUTTER**, make sure appropriate jaw is installed



Current cutter installed displays, select **YES** to continue



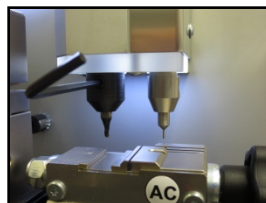
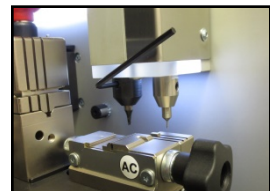
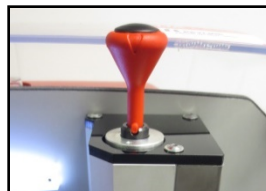
Jaw carriage moves into position



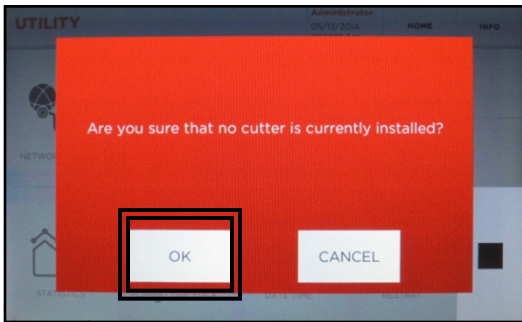
Select **OK** once complete

TO REMOVE CUTTER:

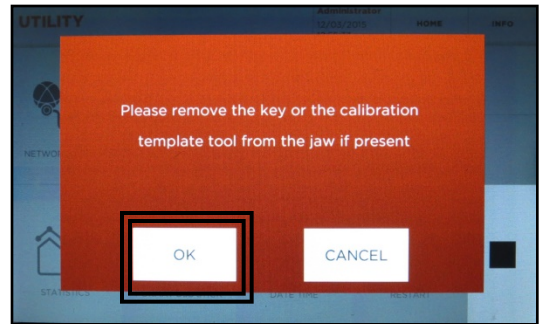
1. Insert red cutter removal tool into slot and rotate until it drops in position.
2. Press down to lock onto cutter.
3. Insert 3mm Allen tool into set screw and once initial release, loosen two complete turns. Remove Allen tool.
4. Remove red rod with cutter attached.
5. Remove old cutter from tool.



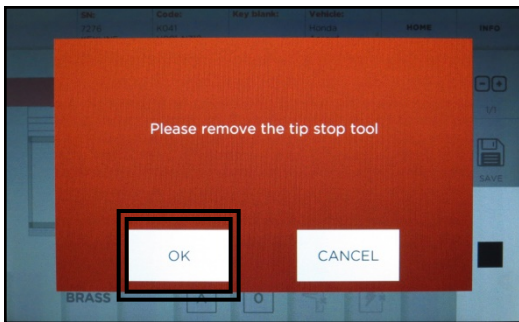
CUTTER REPLACEMENT – H.S., cont.



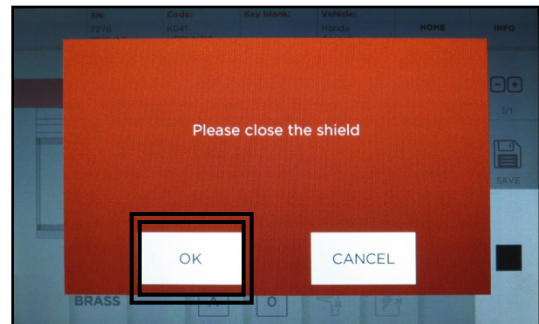
Confirm cutter removal, select **OK**. Jaw will move into position



Confirm no keys or templates are installed on jaw, select **OK**



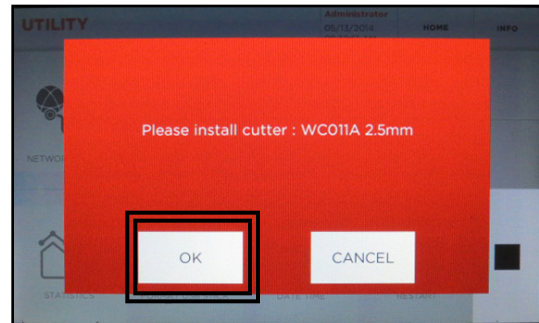
Confirm no tip stop is installed, select **OK**



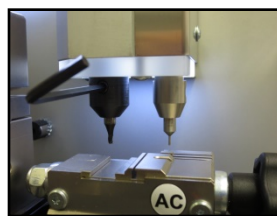
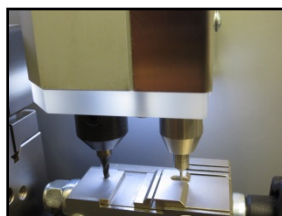
Close the shield and select **OK**. Jaw moves into position

TO INSTALL NEW CUTTER:

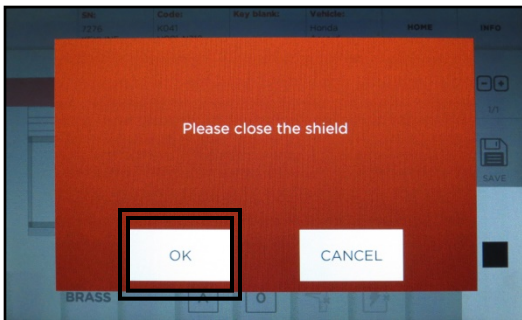
1. Insert new cutter on red tool pressing in until cutter clicks into place.
2. Insert into hole on top of machine
3. Rotate until notch on red tool inserts into slot and cutter rests lightly on the silver dot on the jaw.
4. Tighten set screw with 3mm Allen tool.
5. Remove Allen tool and red tool.



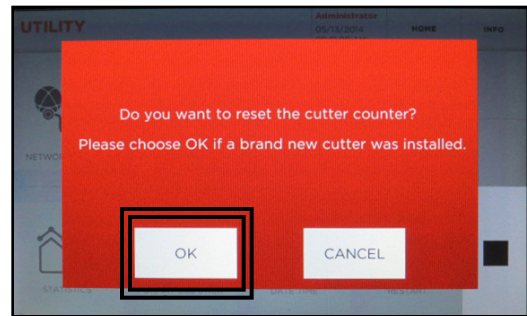
Select **OK** once complete



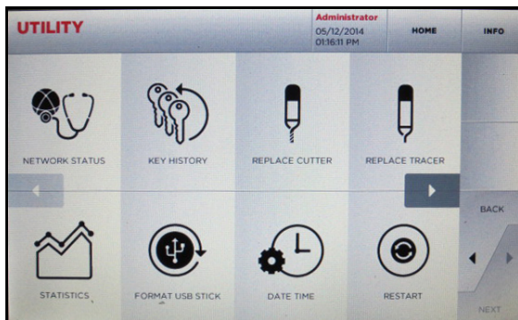
CUTTER REPLACEMENT – H.S., cont.



Close the shield, select **OK**. Jaw will move into position



Select **OK** to reset cutter counter



Utility screen appears, select **HOME** to go to Main Menu

CUTTER REPLACEMENT – EDGE CUT

WHAT YOU NEED:

New replacement cutter (B5500)

2.5mm allen tool (included in tool kit)

Steel bar (included in tool kit)

19mm open end wrench (included in tool kit)



REMOVE OLD CUTTER:

1. Use 2.5mm allen tool to remove 3 screws that secure black edge cutter cover.
2. Insert steel bar into hole on shield and then through left side of cutter shaft. Rotate the cutter wheel until the steel bar is able to insert all the way through the cutter shaft.
3. Use the 19mm wrench to remove nut. Turn **clockwise** to loosen.
4. Remove silver spacer in front of cutter, then remove the cutter.

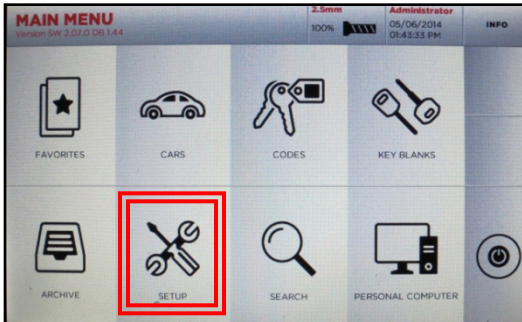


INSTALL NEW CUTTER:

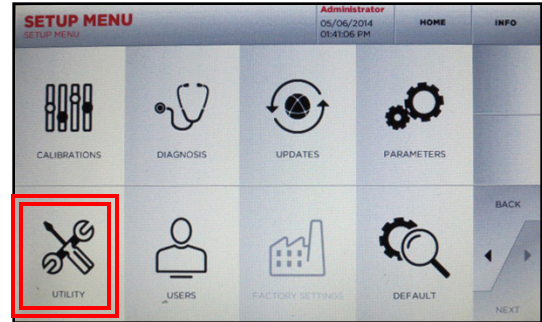
1. Install new cutter onto shaft with part number facing forward, then replace silver spacer and nut. Turn **counterclockwise** to tighten.
2. Remove steel bar, then replace the cover and tighten down screws.
3. Machine is now ready for use.

TRACER REPLACEMENT

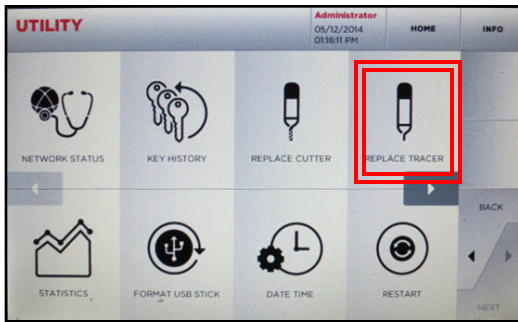
IMPORTANT: Please make sure safety shield is closed before starting initial tracer replacement procedure.



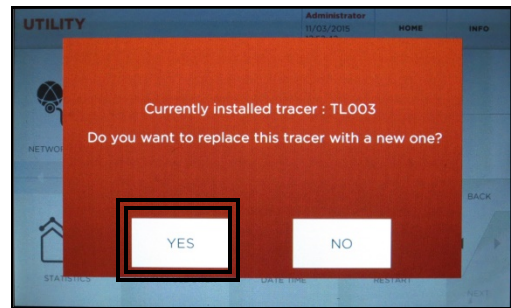
Select **SETUP**



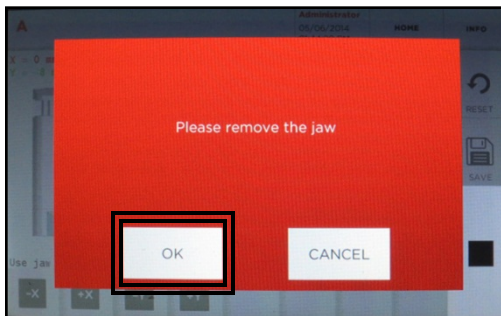
Select **UTILITY**



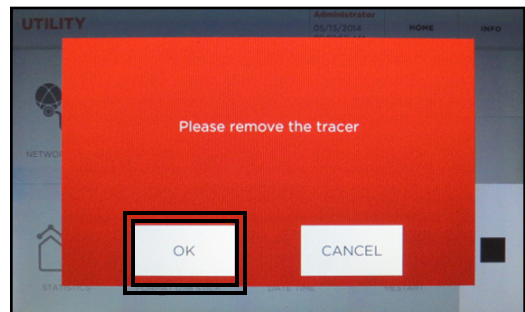
Select **REPLACE TRACER**



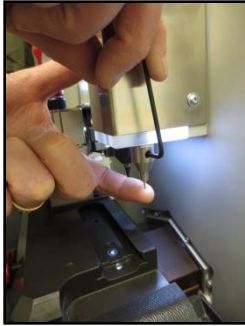
Current tracer installed displays, select **YES** to continue



Remove jaw, then select **OK**



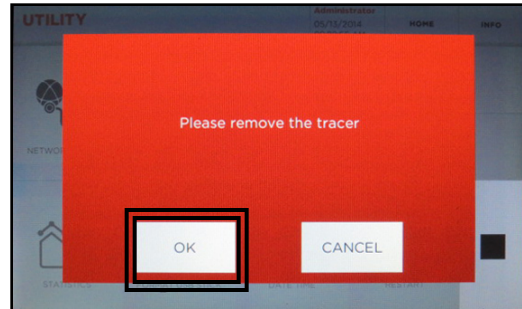
Remove tracer; see instructions on page 23



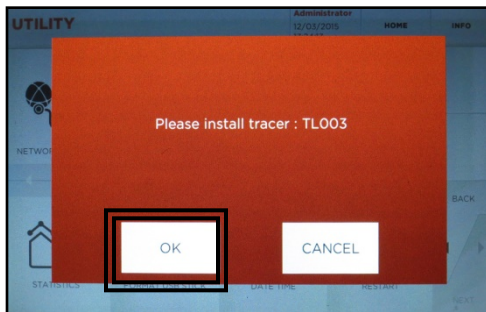
TO REMOVE TRACER:

1. Use 2.5mm Allen tool to loosen tracer setscrew $\frac{1}{2}$ a turn
2. Pull out tracer.

NOTE: You may use pliers to remove tracer if it is bent or broken.

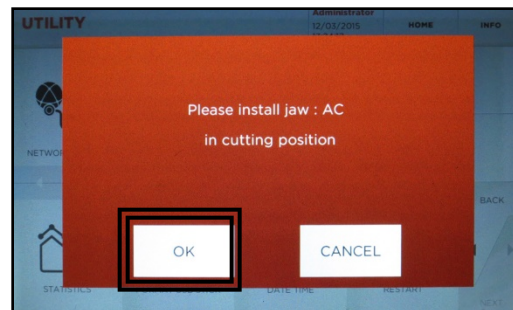


Select **OK** once tracer is removed



TO INSTALL NEW TRACER:

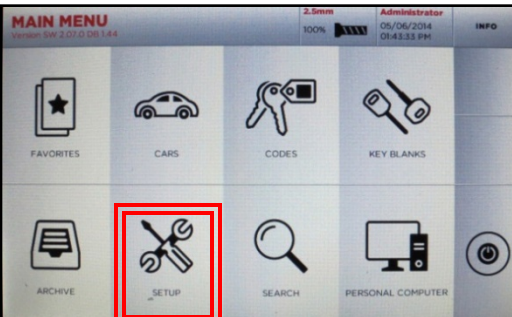
1. Install new tracer as far as it will go – you cannot go too far.
2. Be sure flat side of tracer is facing right to allow the set screw to seat properly.
3. Tighten set screw. **DO NOT OVER TIGHTEN.**
4. Select **OK** once tracer is successfully installed.



Install Jaw AC in cutting position, select **OK**. Utility screen appears, select **HOME** to go to Main Menu.

JAW SETUP – TIBBE (H)

REQUIRED ITEMS: H Jaw, Tibbe calibration template, 2.5mm allen wrench



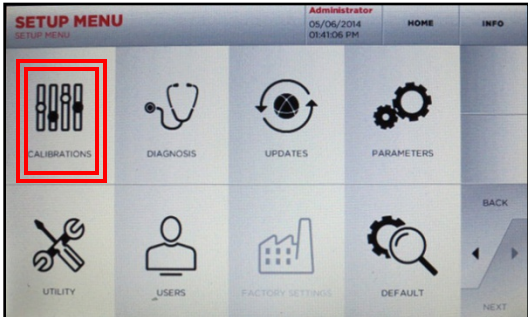
MAIN MENU
version SW 2.01.0 SW 1.84

2.5mm Administrator 05/06/2014 01:43:33 PM INFO

FAVORITES CARS CODES KEY BLANKS

ARCHIVE **SETUP** SEARCH PERSONAL COMPUTER

Select **SETUP**



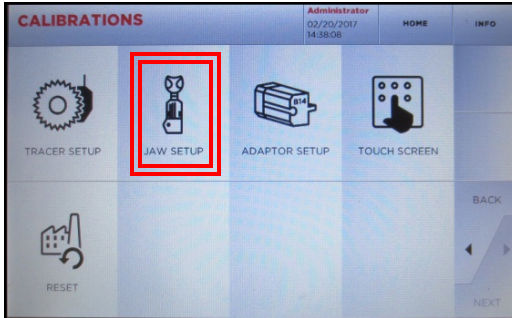
SETUP MENU
SETUP MENU

Administrator 05/06/2014 01:41:06 PM HOME INFO

CALIBRATIONS DIAGNOSIS UPDATES PARAMETERS

UTILITY USERS FACTORY SETTINGS DEFAULT

Select **CALIBRATIONS**



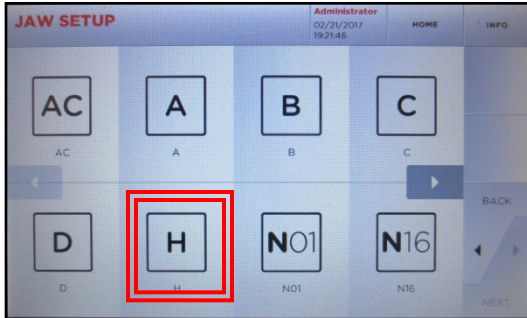
CALIBRATIONS

Administrator 02/20/2017 14:58:08 HOME INFO

TRACER SETUP **JAW SETUP** ADAPTOR SETUP TOUCH SCREEN

RESET

Select **JAW SETUP**



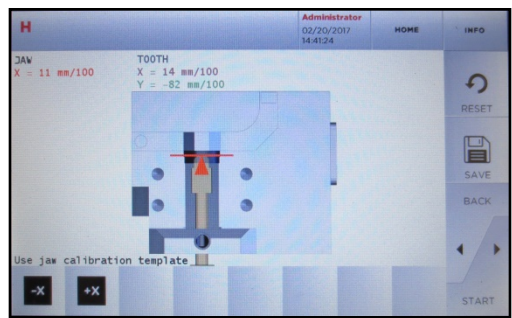
JAW SETUP

Administrator 02/21/2017 19:21:46 HOME INFO

AC A B C

D **H** NO1 N16

Select **H jaw**, then **START**



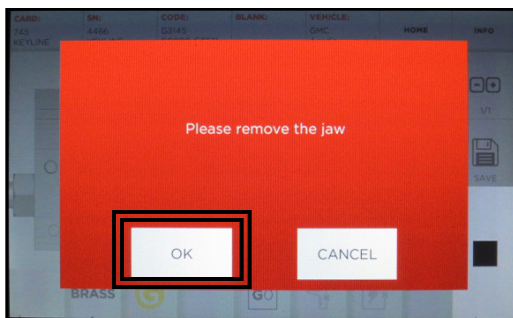
H

Administrator 02/20/2017 14:41:24 HOME INFO

JAW T00TH
X = 11 mm/100 X = 14 mm/100
Y = -82 mm/100

Use jaw calibration template

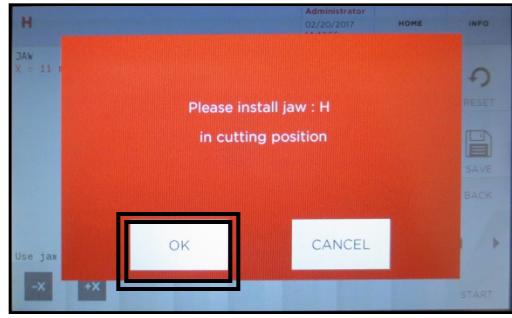
RESET SAVE BACK START



Please remove the jaw

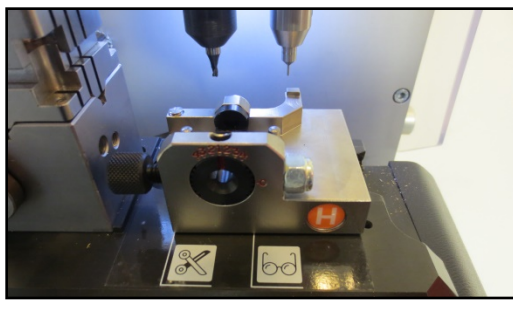
OK CANCEL

Remove current jaw, select **OK**

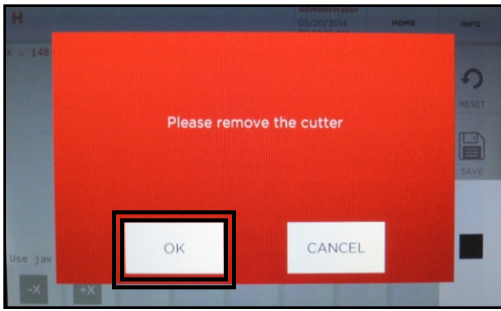


Please install jaw : H
in cutting position

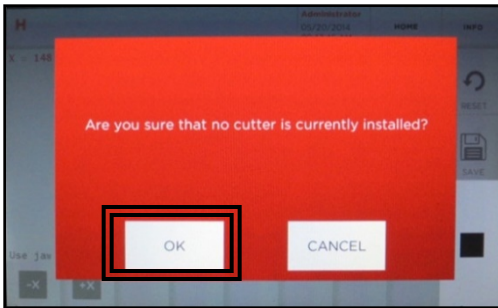
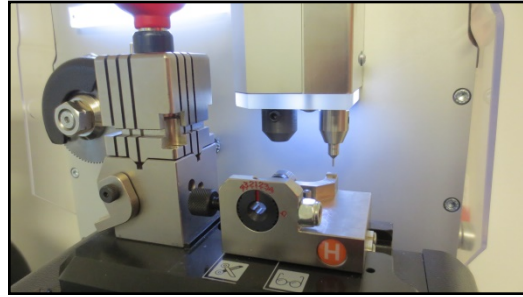
OK CANCEL



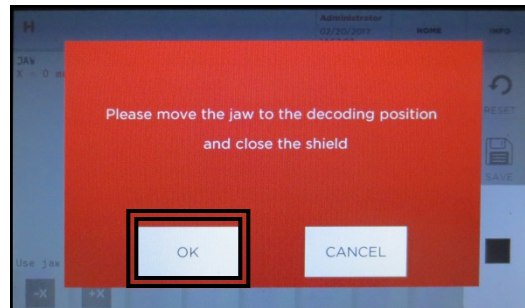
Install jaw **H** in cutting position (as shown to right), select **OK**



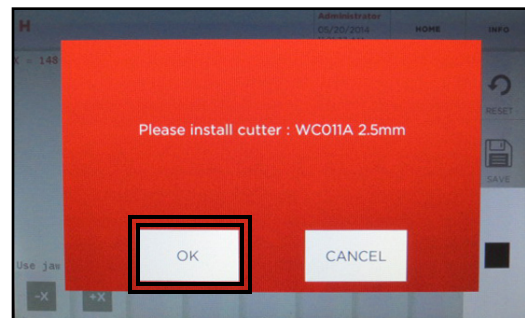
Remove the cutter, select **OK**



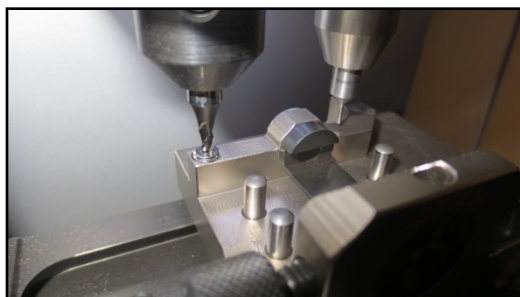
Confirm cutter removal, select **OK**



Move jaw to **DECODING** position, select **OK**

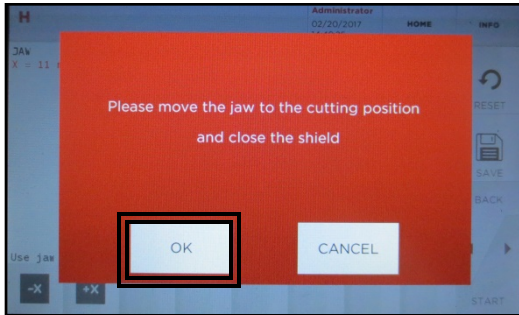


Install 2.5mm as shown in picture, select **OK**

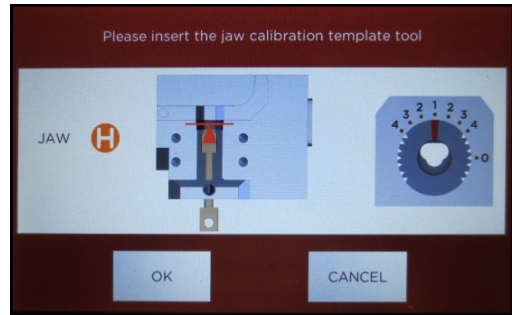


Install cutter until it drops down and rests on top cutter landing dot (shown at left). Tighten cutter set screw.

Jaw will move out after selecting **OK**.



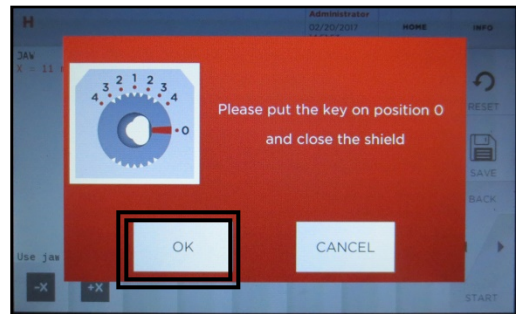
Move jaw to cutting position, close shield and select **OK**



Insert Tibbe jaw calibration template completely into jaw (Fig.1). Tighten front set screw with included Allen wrench



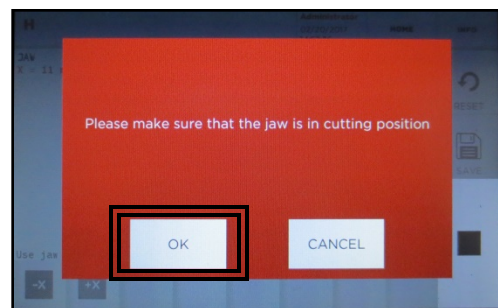
Fig. 1 Jaw in cutting position with template in 1 position



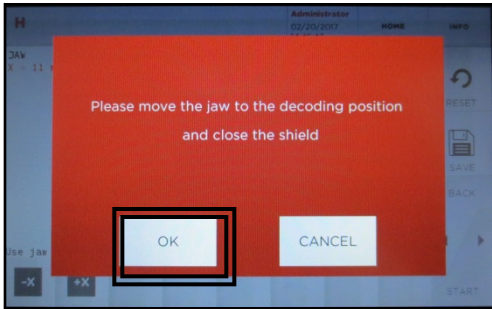
Turn template to position 0 (Fig. 2). Close shield and select **OK**



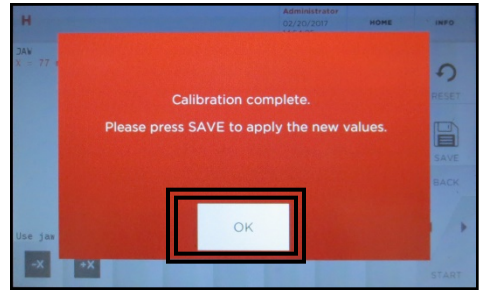
Fig. 2 Template turned to 0 position. Tighten with left thumb wheel



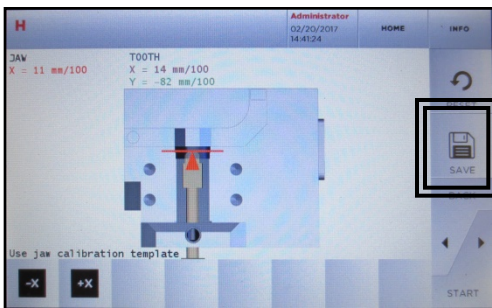
Confirm jaw is in cutting position. Select **OK**. Machine checks jaw.



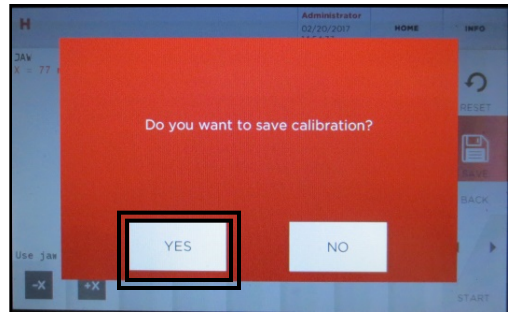
Move jaw to decoding position



Calibration complete. Select **OK**



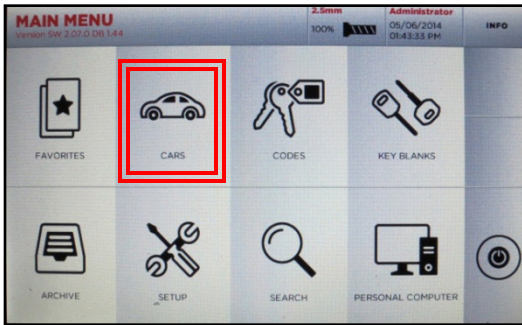
Select **SAVE** icon



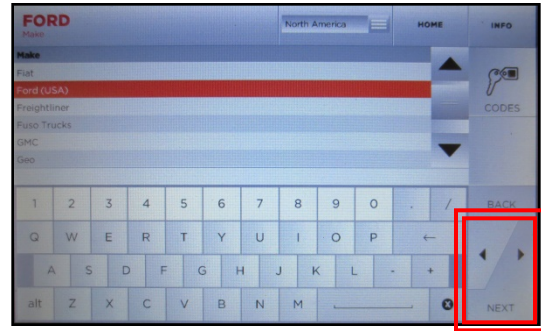
Select **YES** to save calibration

Repeat jaw calibration a second time to confirm the values are within +/- 2. Then proceed to **CUT BY CODE – TIBBE**.

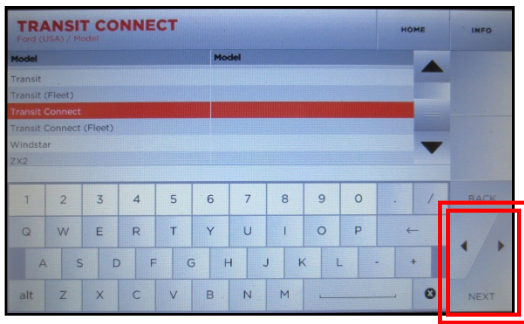
CUT BY CODE – TIBBE (H)



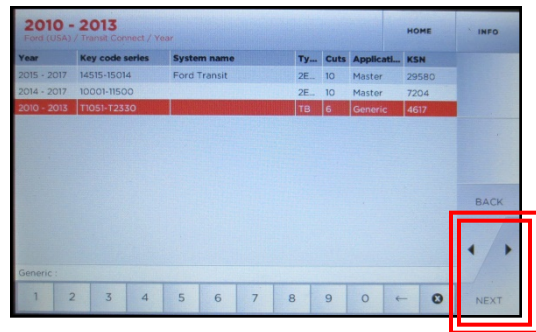
Select **CARS**



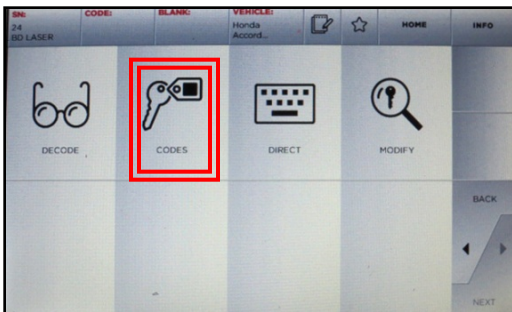
Select Make, then **NEXT**



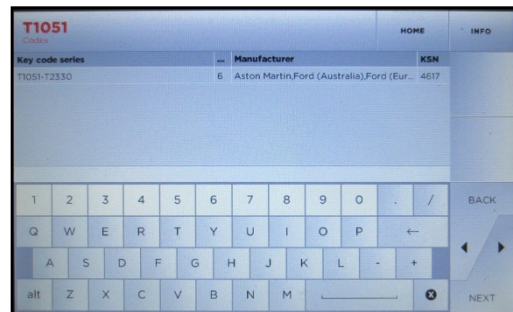
Select Model then **NEXT**



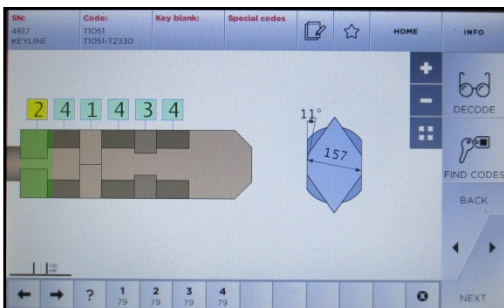
Select year range and then **NEXT**



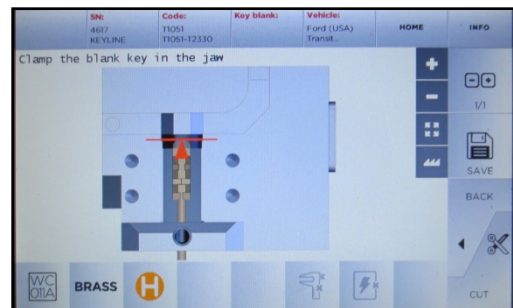
Select **CODES**, then **NEXT**



Enter Code, select **NEXT**

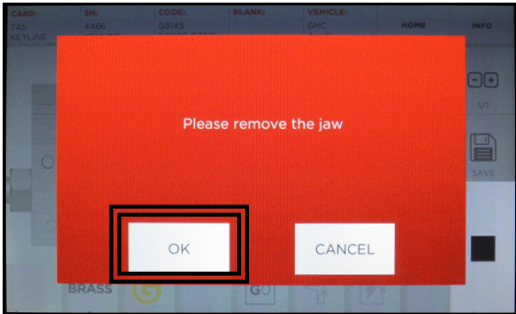


Key depths displayed, select **NEXT**

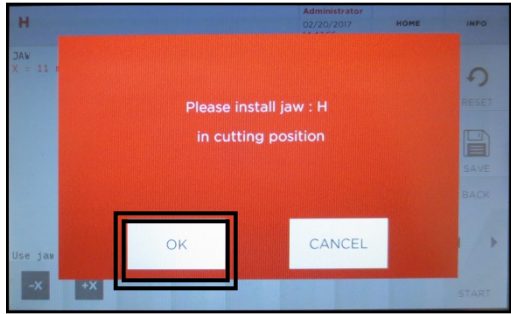


Insert Tibbe key in 0 position. Select **CUT**

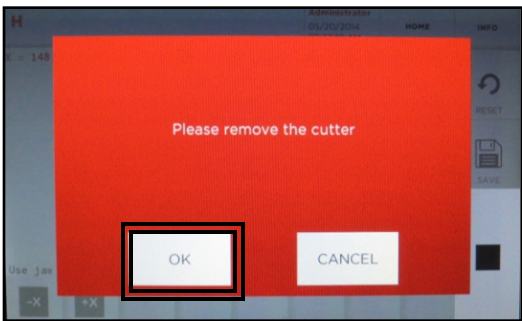
CUT BY CODE – TIBBE (H), cont.



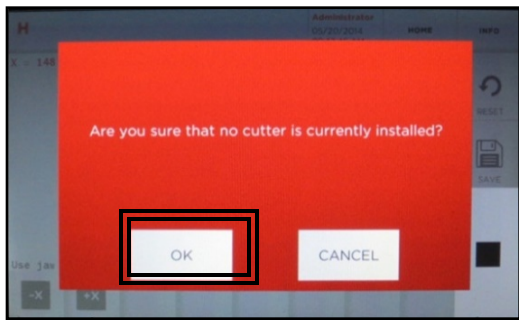
Remove current jaw, select **OK**



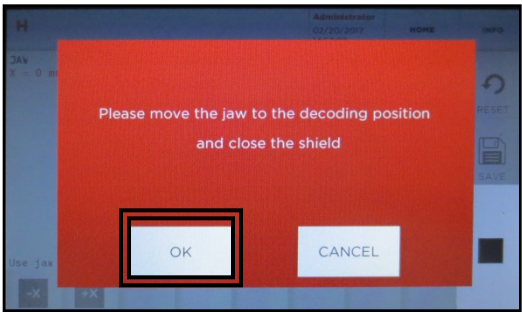
Install jaw H in cutting position, select **OK**



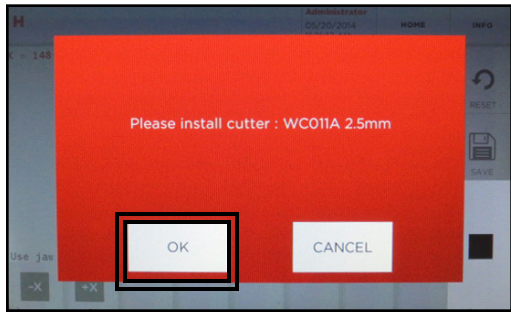
Remove the cutter, select **OK**



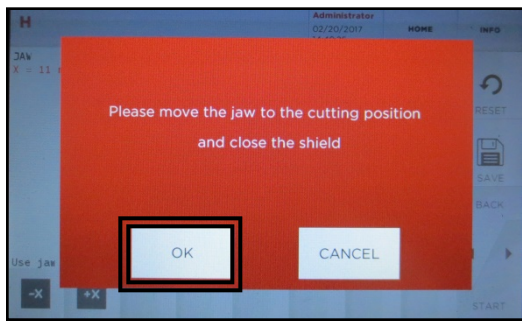
Confirm cutter removal, select **OK**



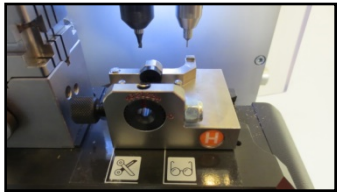
Move jaw to DECODING position, select **OK**



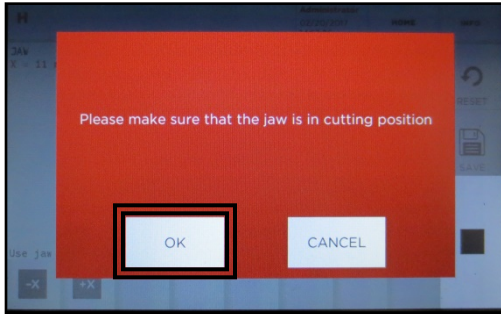
Install 2.5mm cutter, then select **OK**



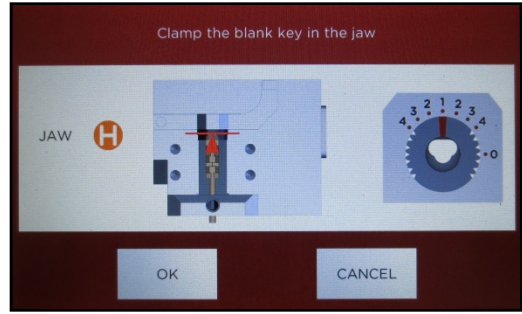
Move jaw to cutting position, close shield and select **OK**



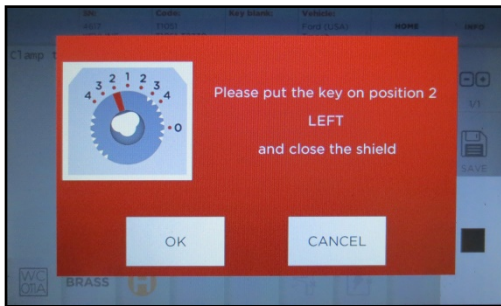
CUT BY CODE – TIBBE (H), cont.



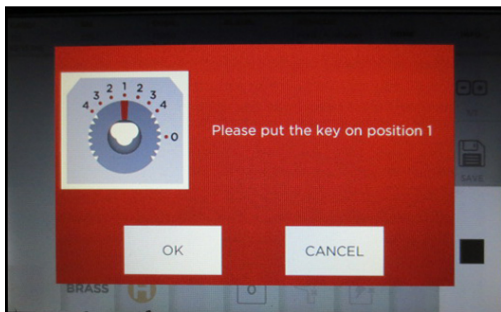
Confirm jaw is in cutting position



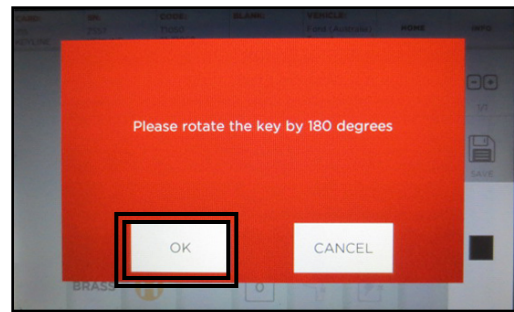
Clamp key blank in jaw



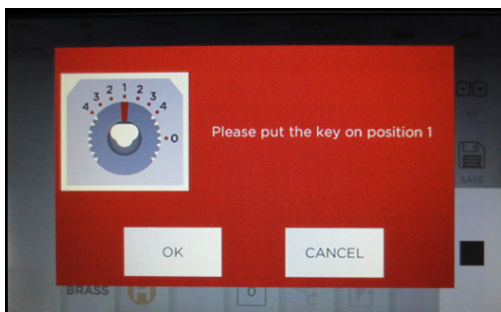
Follow the machine prompts for each cut position until the first side of key is complete. After cuts are complete, **machine will prompt to put key into position 1** (i.e. home position so key can be removed), then select **OK**.



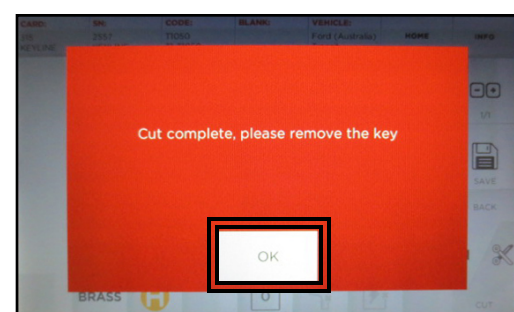
Turn key to position 1, select **OK**



Rotate key 180 degrees and follow prompts to cut second side of key



Turn key to position 1 again, select **OK**

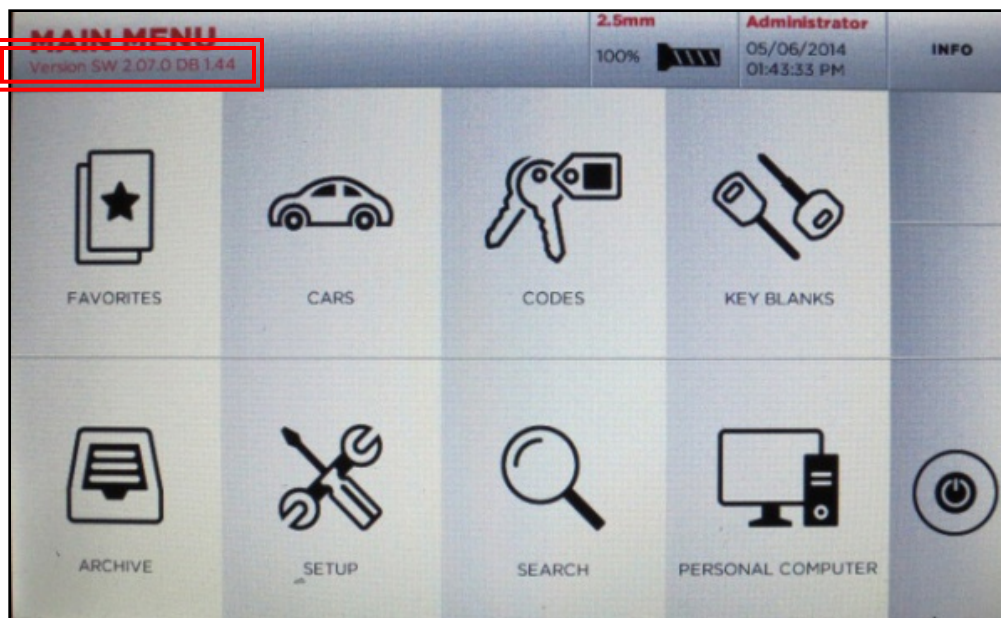
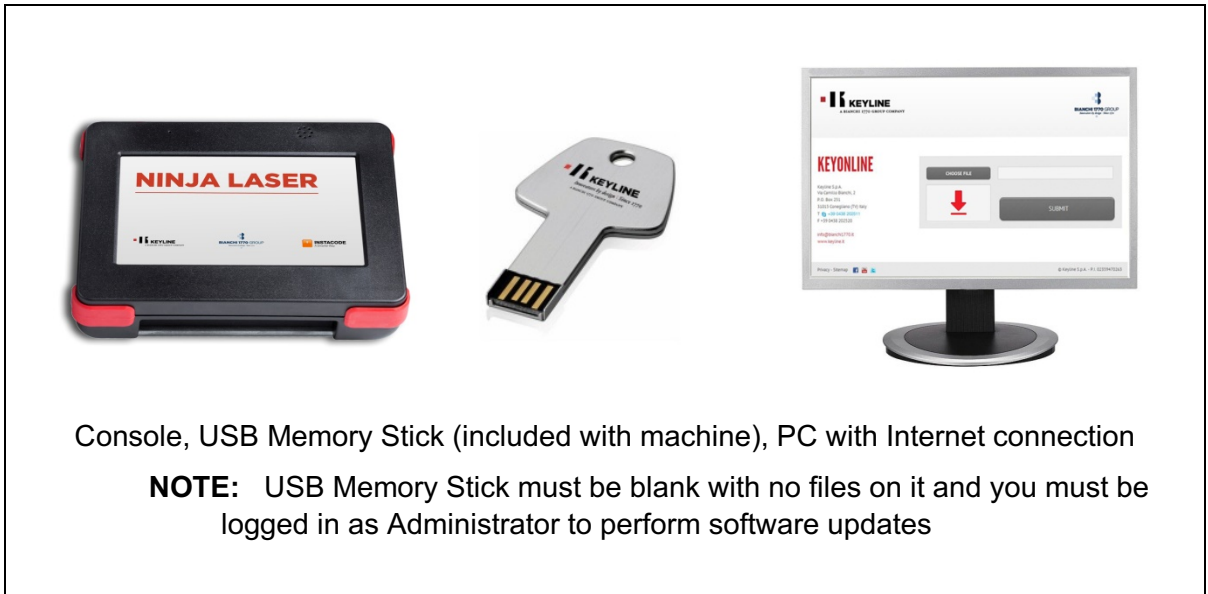


Remove key and select **OK**

SOFTWARE UPDATE INSTRUCTIONS

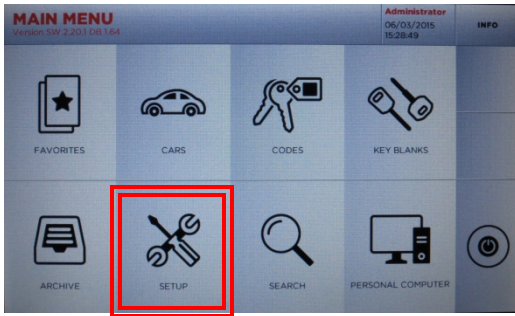
SOFTWARE UPDATE VIA USB MEMORY STICK & KEYONLINE WEBSITE

WHAT YOU WILL NEED:

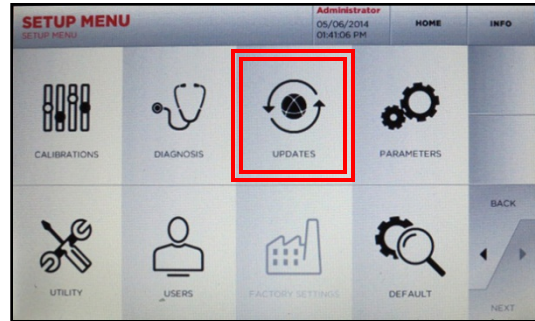


To check your current software version, see 'Version SW' below the Main Menu tab

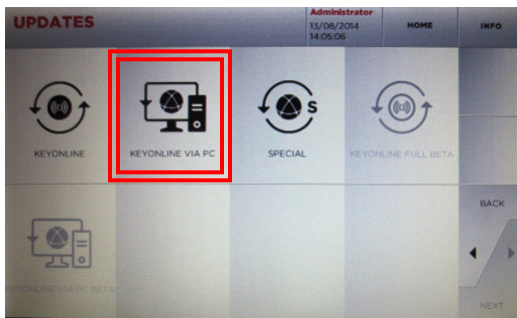
STEP 1: Prepare USB Memory Stick with Update File



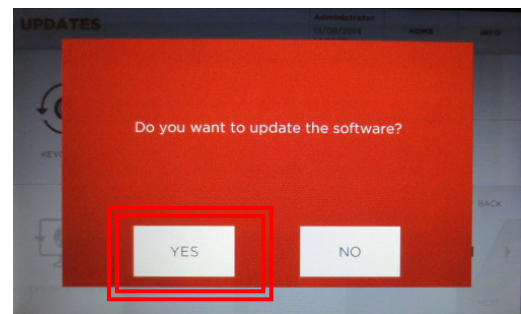
At **MAIN MENU**, select **SETUP**



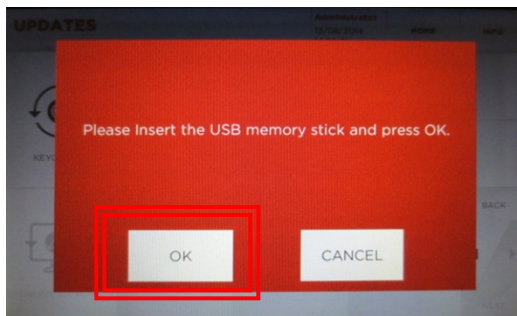
At **SETUP MENU**, select **UPDATES**



Then select **KEYONLINE VIA PC**



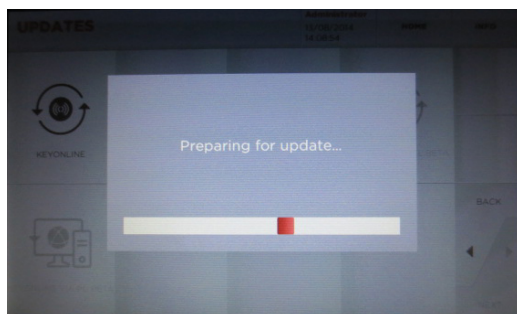
Select **YES** to Software Update



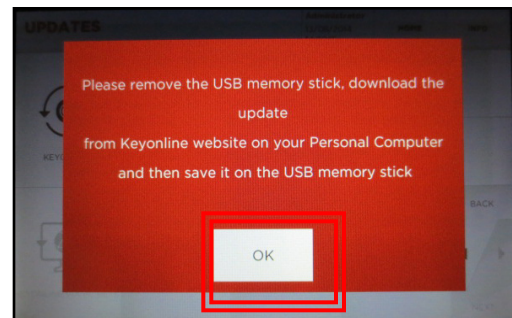
Insert USB Memory Stick, select **OK**



USB stick inserts on right side of console



Console prepares software file

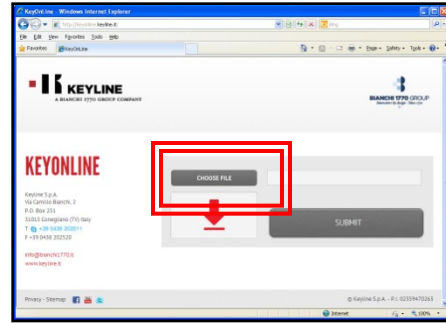


Remove USB stick, Select **OK**

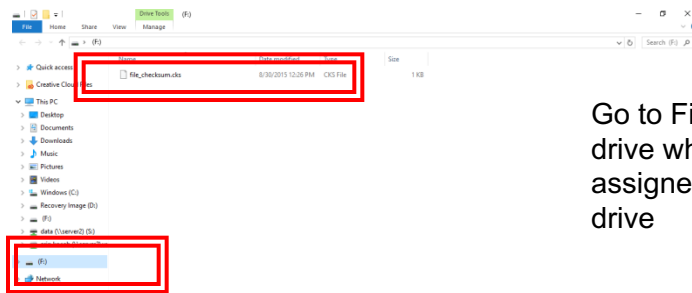
STEP 2: Install Update File on USB from PC



Insert USB stick into USB port on PC then go to <http://keyonline.keyline.it>

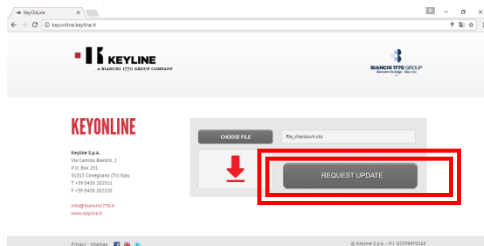


On site, double-click **CHOOSE FILE**



Go to File Explorer, locate the drive where the USB stick is assigned and double-click the drive

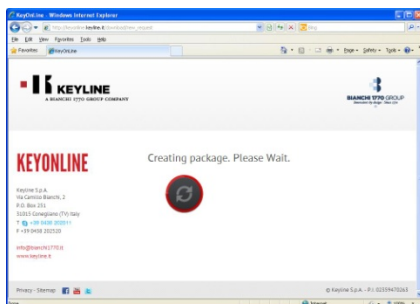
Highlight the '.cks' file listed and click **OPEN**



The '.cks' file now appears in the box on the Keyonline site, then click **REQUEST UPDATE**

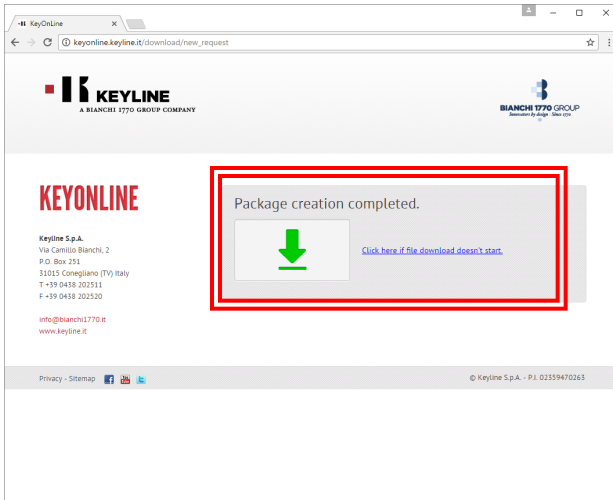
A pop-up box will appear that says **"This action may take some time"**

Click **OK** when this message appears

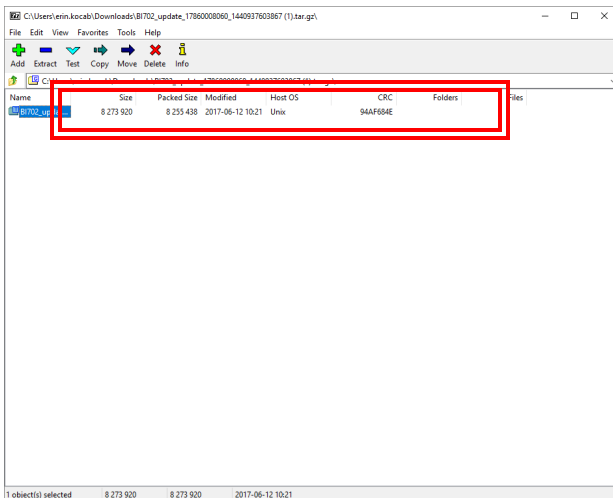


Software package creation will begin. This take up to a few minutes depending on your Internet speed.

STEP 2, cont: Install Update File on USB from PC



Package creation completed should appear. You will be prompted with a pop up at the bottom of the screen, that shows the downloaded file. Click on the drop down arrow to the right of the download file and select **OPEN IN FOLDER**

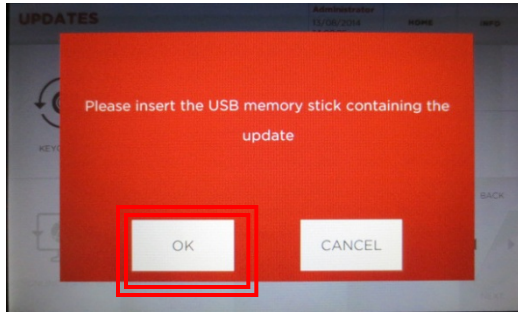


Once you have the downloaded file folder up, locate the USB drive with the original file you downloaded from the Ninja Laser console. Drag the new file that you created from Keyonline to the USB drive (NOTE: Do not extract the file – just drag and drop). The file will begin downloading to the USB stick.

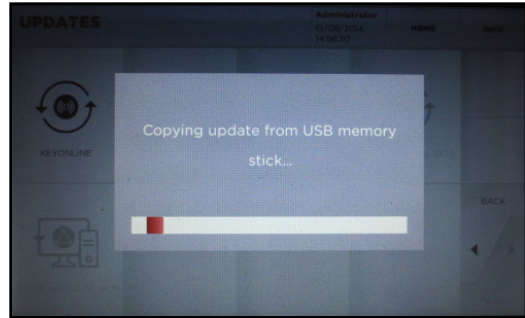
Once the update file has finished installing you will then have two items on your USB stick. The original .cks file you downloaded from the USB and the file you downloaded from Keyonline.

Safely eject the Removable Disk from your drive. To eject, right click on the drive letter and select Eject. You can now take the USB memory stick back to your console to complete the software update.

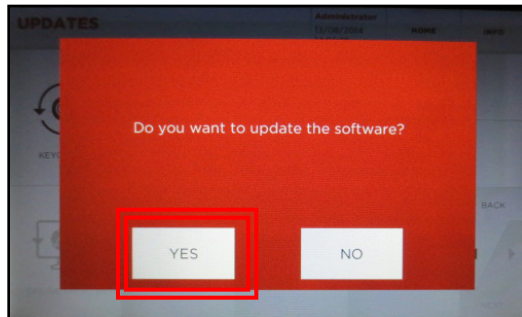
STEP 3: Complete Software Installation on Console



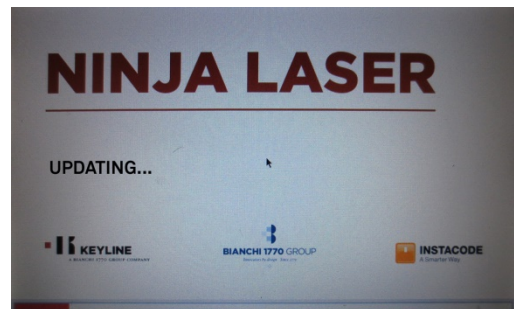
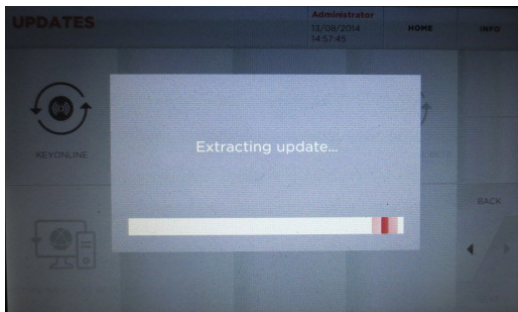
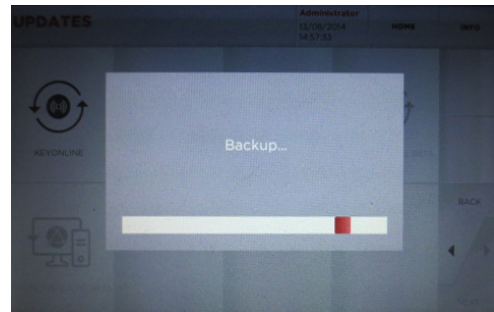
Insert USB into console and select **OK**



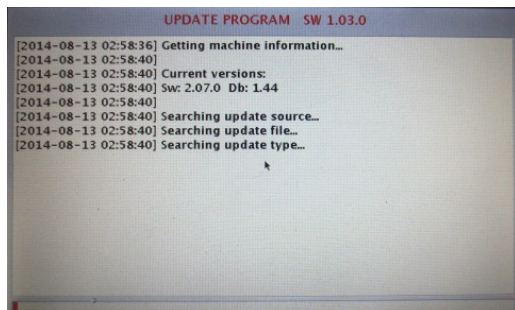
Update begins



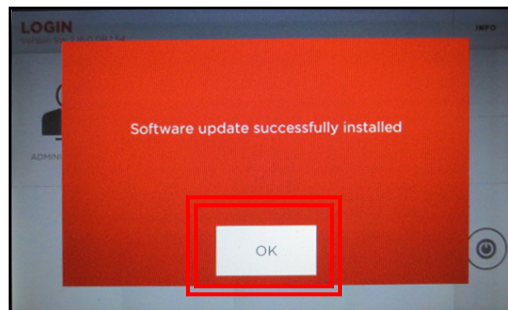
Select **YES** to confirm update



Machine will re-boot and power back up as update continues

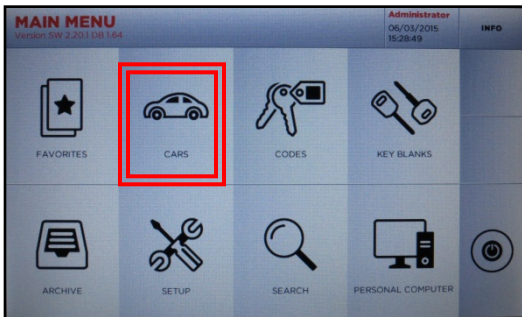


Update continues; progress bar on bottom



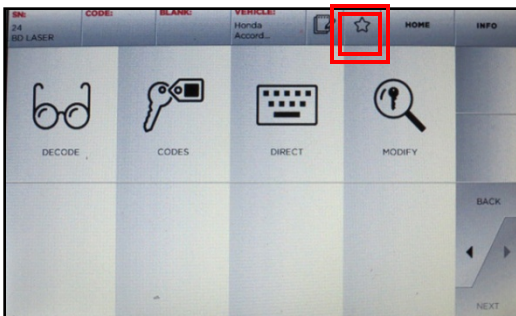
Update successful; select **OK**

Selecting Favorites helps bypass Make, Model and Year selections that you most commonly use to get you right to the Code/Decode/Direct screen

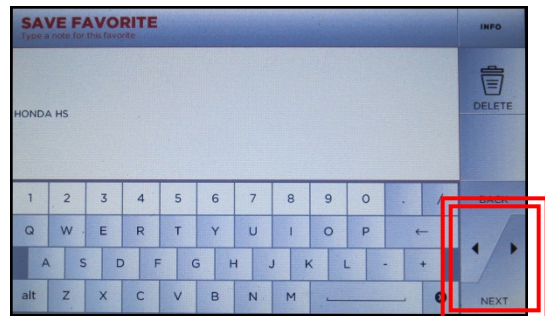


At Main Menu, select Cars

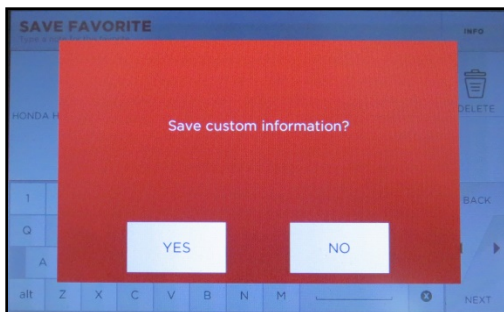
Go through the menu and select the Make, then the Model, then the Year and Code Series range of the vehicle you want to save a favorite for



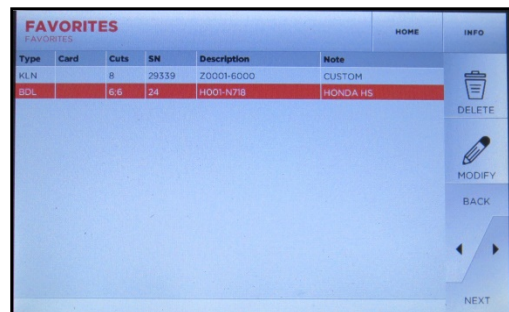
Select the Star icon from the top Menu bar



Enter the text for the Favorite you are adding, then select Next



Select YES to save custom info



From the Main Menu select Favorites and the saved favorite will now be listed. This can be selected for future keys to bypass the Make, Model and Year selection and go right to Decode/Codes/Direct menu

NINJA LASER SPARE PARTS

Description	Part Number
Universal 2.5mm cutter (WC011A)	B3320
63mm Carbide Cutter	B5500
Universal Tracer (TL003)	RIC09483B
Calibration Tracer (TL000)	RIC09912B
Magnetic Tip Stop (For HS AC Clamp)	RIC08515B
Cutter setup blanks (5pk)	B3319
Jaw calibration template	B3354
"AC" Clamp	OPZ09734B
"H" Clamp - Orange (must have dot indentation on bottom of jaw)	OPZ09523B
3mm T-wrench (Long)	B3316
Red Cutter Removal Tool	B3315
Ninja Laser B Clamp	OPZ09781B
Ninja Laser D Clamp	OPZ09783B
Console / Base Support	RIC09940B
Console Arm Support	OPZ09454B
Infiniti Adaptor (AD02)	B3352
Lexus 80K Adaptor (AD03)	B3379
Infiniti Adaptor (AD05)	OPZ10269B
Edge Cut Tip Stop (For N01 Edge Cut Clamp)	RIC02186B
Anti-glare console screen protector	B9979
4GB USB Flash Drive for Software Updates	PROMO12-015