

Manuals+

User Manuals Simplified.



AUTEL MaxiSys MS906 Pro Display Tablet User Guide

January 26, 2022 January 27, 2022

[Home](#) » [AUTEL](#) » AUTEL MaxiSys MS906 Pro Display Tablet User Guide 

AUTEL MaxiSys MS906 Pro Display Tablet

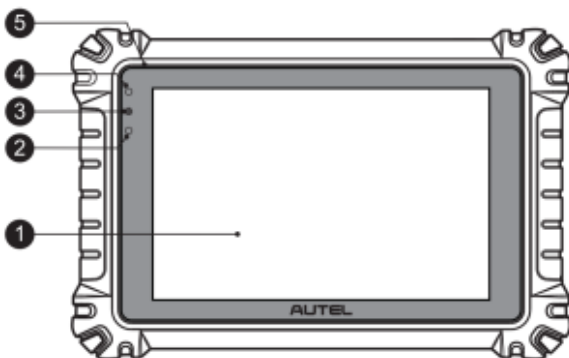


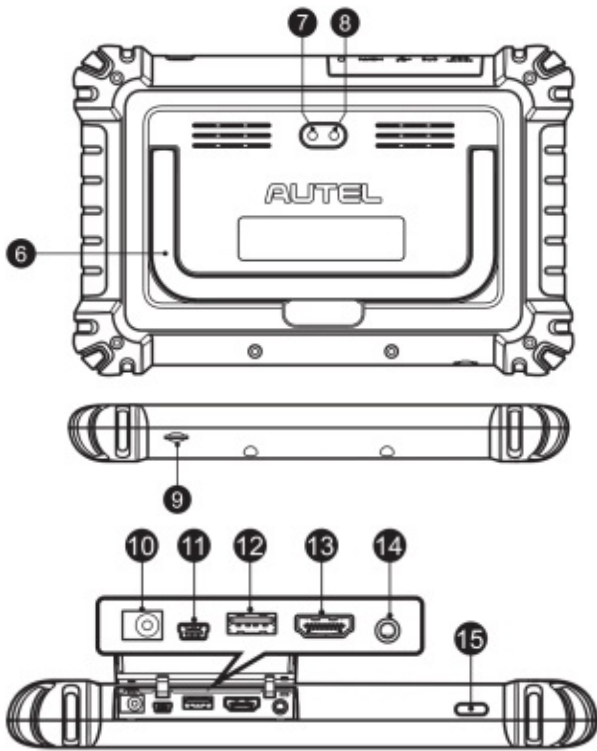
Thank you for purchasing this Autel MaxiSys MS906 Pro. Our tools are manufactured to a high standard and – when used according to these instructions and properly maintained – will provide years of trouble-free performance.

Contents | [hide](#)

- [1 MaxiSys MS906 Pro Display Tablet](#)
- [2 VCI \(Vehicle Communication Interface\) Device – MaxiVCI V200](#)
 - [2.1 VCI LED Description](#)
- [3 FCC STATEMENT](#)
- [4 Documents / Resources](#)
 - [4.1 Related Manuals / Resources](#)

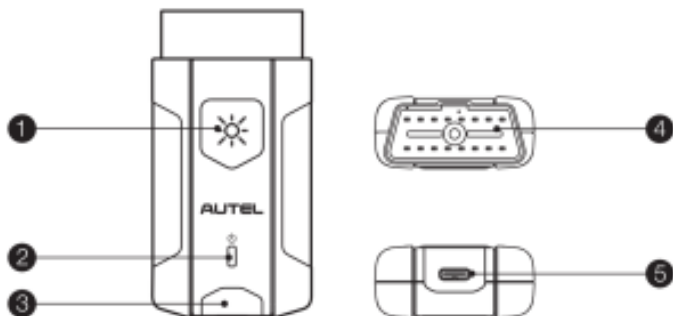
MaxiSys MS906 Pro Display Tablet





1. 8-inch LED Capacitive Touchscreen
2. Ambient Light Sensor – detects ambient brightness
3. Power LED
4. Front Camera
5. Microphone
6. Collapsible Stand – extends from the back to allow hands-free viewing of the table
7. Rear Camera
8. Camera Flash
9. TF Card Slot
10. DC Power Supply Input Port
11. Mini USB Port
12. USB Port (for VCI Connection)
13. HDMI Port
14. adset Jack (3-band 3.5mm)
15. Lock/Power Button – press and hold to turn on/off the tablet, or tap to lock the screen

VCI (Vehicle Communication Interface) Device – MaxiVCI V200



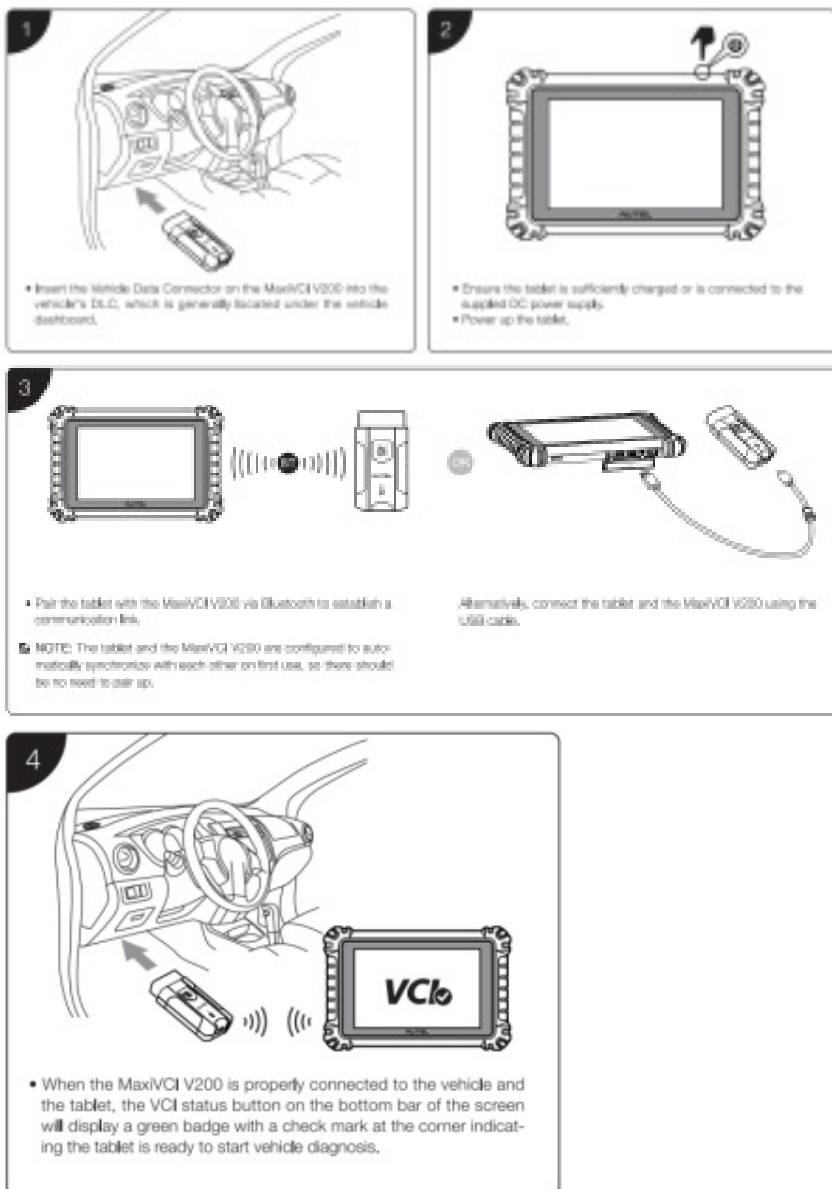
1. Flashlight Power Button
2. Power LED
3. Vehicle/Connection LED
4. Vehicle Data Connector (16-pin)
5. USB Port

VCI LED Description

LED	Color	Description
Power LED	Yellow	The VCI is powered on and performing self-check.
	Green	The VCI is ready for use
	Flashing Red	The firmware is updating.
Vehicle /Connection LED	Green	<ul style="list-style-type: none"> • Solid Green: The VCI is connected via USB cable. • Flashing Green: The VCI is communicating via USB cable.
	Blue	<ul style="list-style-type: none"> • Solid Blue: The VCI is connected via Bluetooth • Flashing Blue: The VCI is communicating via Bluetooth.



IMPORTANT: Before operating or maintaining this unit, please read these instructions carefully, paying extra attention to the safety warnings and precautions. Failure to use this product properly may cause damage and/or personal injury and will void the product warranty



FCC STATEMENT

This device complies with Part 15 of the FCC Rules. Operation is subject to the following two conditions:
 (1) This device may not cause harmful interference, and

(2) This device must accept any interference received, including interference that may cause undesired operation. Warning: Changes or modifications not expressly approved by the party responsible for compliance could void the user's authority to operate the equipment.

NOTE: This equipment has been tested and found to comply with the limits for a Class B digital device, pursuant to Part 15 of the FCC Rules. These limits are designed to provide reasonable protection against harmful interference in a residential installation. This equipment generates uses and can radiate radio frequency energy and, if not installed and used in accordance with the instructions, may cause harmful interference to radio communications. However, there is no guarantee that interference will not occur in a particular installation. If this equipment does cause harmful interference to radio or television reception, which can be determined by turning the equipment off and on, the user is encouraged to try to correct the interference by one or more of the following measures:

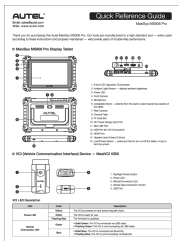
- Reorient or relocate the receiving antenna.
- Increase the separation between the equipment and receiver.
- Connect the equipment into an outlet on a circuit different from that to which the receiver is connected.
- Consult the dealer or an experienced radio/TV technician for help.

RF warning statement:

The device has been evaluated to meet general RF exposure requirement. The device can be used in portable exposure condition without restriction.

AUTEL®

Documents / Resources



[AUTEL MaxiSys MS906 Pro Display Tablet \[pdf\] User Guide](#)
MS906PRO, WQ8-MS906PRO, WQ8MS906PRO, MaxiSys MS906 Pro Display Tablet, MaxiSys MS906 Pro, Display Tablet

Related Manuals / Resources



[AUTEL MaxiSys MS906 Pro-TS Diagnostics Scanner User Guide](#)

Email: sales@autel.com Web: www.autel.com Quick Reference Guide MaxiSys MS906 Pro-TS Thank you for purchasing this Autel MaxiSys MS906...



[Amazon AWS FireHD10 Kids Pro Tablet User Guide](#)

Amazon AWS FireHD10 Kids Pro Tablet What's in the Box Installation Power on your tablet Swipe up to...



[AUTEL Dragonfish Pro Aircraft Battery Charger User Guide](#)

AUTEL Dragonfish Pro Aircraft Battery Charger User Guide Registered Trademark Shenzhen Autel Robotics Aviation Technology Co., Ltd. (hereinafter...



[Apple Pro Display XDR Recycling Instructions](#)

Pro Display XDR Recycler Guide © 2021 Apple Inc. All rights reserved. About This Guide Apple Recycler Guides...

[Manuals+](#),

- [home](#)
- [privacy](#)