

Hinges & pivots **A**

Pulls & plates **B**

Flush bolts & coordinators **C**

Latches, catches & bolts **D**

Stops **E3**

Exterior hardware **F**

Miscellaneous hardware **G**



FS436



FS438

FS436 Dome stop

FS438 Dome stop

- FS436 for doors without threshold
- FS438 for doors with threshold or undercut doors
- Heavy-duty cast dome stops
- Packed with fasteners for light duty masonry and wood applications
- Grey rubber bumper

Certifications

- FS436 Meets ANSI/BHMA A156.16, L12141 for brass and L32141 for aluminum
- FS438 Meets ANSI/BHMA A156.16, L12161 for brass and L32161 for aluminum

Material substrate

- Made from cast brass or aluminum

Available accessory items

- Security pin screws

Dimensions

FS436

- Overall height: 1"
- Base height: 3/16"
- Base diameter: 1-3/4" x 2" oval

FS438

- Overall height: 1-3/8"
- Base height: 9/16"
- Base diameter: 1-3/4" x 2" oval

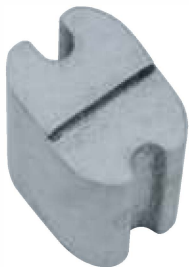
Finishes - Brass

BHMA	Description	Substrate	Finish
605	Bright brass	Brass	US3
606	Satin brass	Brass	US4
609	Blackened brass	Brass	US5
612	Satin bronze	Brass	US10
613	Oil rubbed bronze	Brass	US10B
619	Satin nickel	Brass	US15
622	Matte black	Brass	BLK
625	Bright chrome	Brass	US26
626	Satin chrome	Brass	US26D
—	Aged bronze	Brass	643e/716

Finishes - Aluminum

BHMA	Description	Substrate	Finish
628	Satin aluminum	Aluminum	US28

For other colors, consult factory.



R435 Riser for FS436 Dome stop

R437 Riser for FS438 Dome stop

- R435 for conversion of FS436 Dome stop to carpet installation
- R437 For conversion of FS438 Dome stop to carpet installation
- Packed with fasteners for heavy duty masonry and wood applications

Material substrate

- Made from aluminum, mill finish

Dimensions

- Base diameter: 1" X 1-7/16" oval
- Heights: available in 1/4", 3/8", 1/2", 5/8", 3/4" and 1" height

