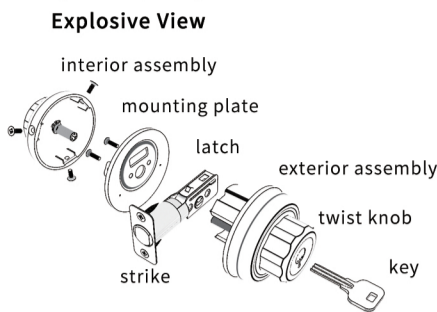
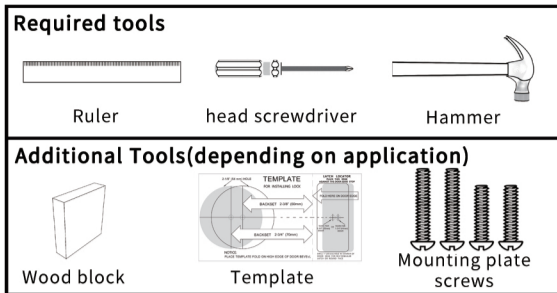


SAFETY INFORMATION

Please read and understand this entire manual before attempting to assemble, operate or install the product.

PREPARATION

Before beginning installation of product, make sure all parts are present, Compare parts with



- package contents list, If any part is missing or damaged, do not attempt to assemble, install or operate the product, - Contact customer service for replacement parts,
- ESTIMATED ASSEMBLY TIME : 30-50 MINUTES

TOOLS NEEDED FOR NEW INSTALLATION:(NOT INCLUDED)

CARE AND MAINTENANCE THE FOLLOWING CARE INSTRUCTIONS SHOULD BE FOLLOWED TO ENSURE A LONG LASTING FINISH:

- 1.Remove locks, or do not install locks, prior to painting your door,
- 2.Periodically clean with mild soap and a soft cloth only. Do not use abrasives or harsh chemicals and avoid sharp objects.

PACKAGE CONTENTS

- | | |
|---------------------------------------|--|
| A. Keys (5) (Only included in Entry) | F. Strike Plate |
| B. Outside Twist Knob Assembly | G. M4*12mm Latch/Strike screws, Qty 4 |
| C. Latch box | H. Mounting plate screws Qty 4 |
| D. Inside Twist Knob Assembly | M4*18mm Mounting screws, Qty 2 (or M5) |
| E. Faceplate | M4*24mm Mounting screws, Qty 2 (or M5) |

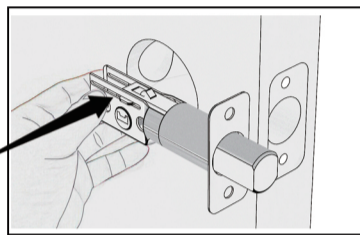
1.ADJUSTABLE LATCH FOR 2-3/8 in.(60mm)AND 2-3/4 in.(70mm)BACKSET

The backset is the distance from the door edge to the center of the hole on the door face. Some locks are supplied with an adjustable latch which can fit a 2-3/8 in.(60 mm) or 2-3/4 in.(70mm)backset.

Latch Backset Adjustment

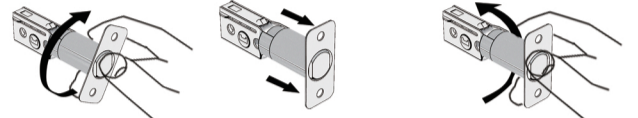
Your latch was preset at the factory for a 2-3/8 in. (60 mm) backset. If a 2-3/4 in.(70 mm)backset is required, follow the instructions below.

Hold the latch in front of the door hole, with the latch face flush against the door edge



Notice: Watch the "UP" direction

a. If 2-3/4 in.(70 mm)backset is required, pull spindle cam all the way to the right end of the adjusting hole.



Rotate the latch face as shown to extend the latch

Notice: Bolt top must be pressed while adjusting the backset as showed on latch

b. Be sure the stem hole of the upper/lower cam is properly aligned.

c. Your latch is now set at a 2-3/4 in.(70 mm)backset,

d. To reset the latch to 2-3/8 in. (60mm), push spindle cam to the short end of the adjusting hole.

e. If already adjusting the latch, test the latch whether the throw can extend or not as shown



2.MARK DOOR WITH TEMPLATE

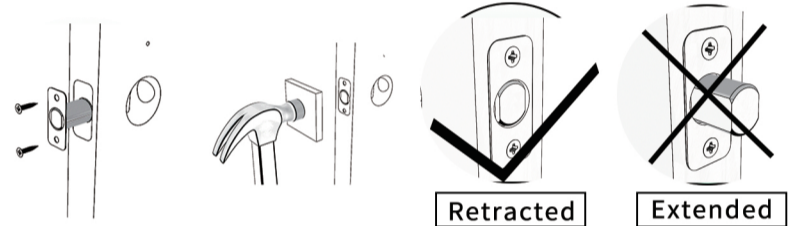
- a. Start 36 in.(914 mm)from floor, fold and apply template, mark the center of door edge.
- b. Select 2-3/8 in. or 2-3/4 in. (60 mm or 70 mm) backset as desired, and mark center of hole on door face.

3.DRILL HOLES

- a. Drill 2-1/8 in.(54 mm) hole through door face from both sides to avoid wood splitting.
- b. Drill 1 in.(25.4 mm) hole for latch.

4.INSTALL LATCH

- a. Insert latch in hole and keep it parallel to door face. Mark outline of face plate and remove latch
- b. Chisel 5/32 in.(4 mm)deep or until face plate is flush with door edge.
- c. Insert latch and tighten screws.

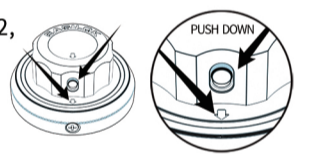


5.Open the package and loose the screws ready for installation

- a. take the lock from the paper and blister package
- b. loose it three parts for installation

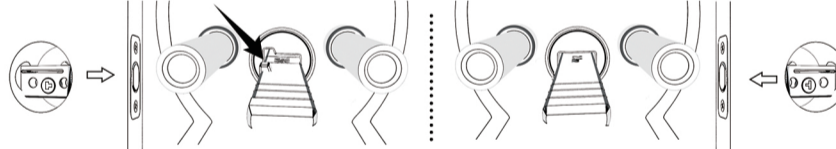
Notice: Keep these screws for use again

c. NOTICE: if the model is E2, push the DEAD-BUTTON snapping on to the socket of the cover near the arrow before install it

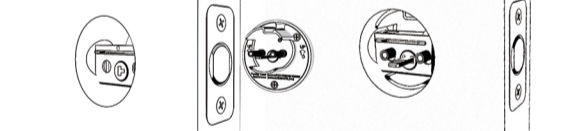


6. INSTALLING THE EXTERIOR PAD

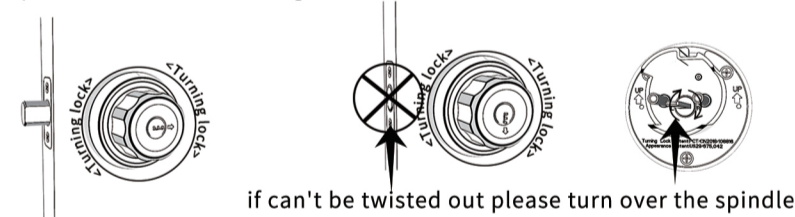
- a: Make sure the bump on the tailpiece aligns with the slot of the latch hub before inserting the tailpiece through the hub of the latch



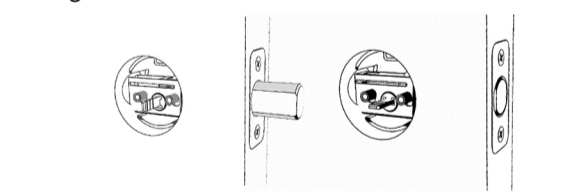
- b: after you adjust the spindle(tailpiece)direction with the cam solt, insert the spindle into the latch fully(if can't be fully inserted, please take the pad out and turn over the spindle).



c :After installed the exterior pad,twist the knob to check whether the bolt can be twisted out; if the throwbolt can't be twisted out,turn over the spindle,insert, and twist again,"

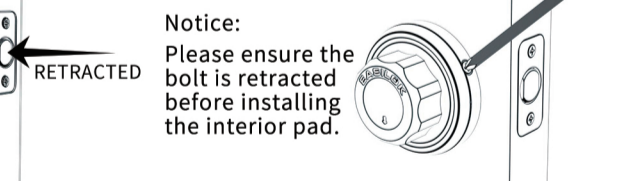
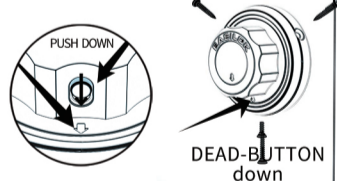
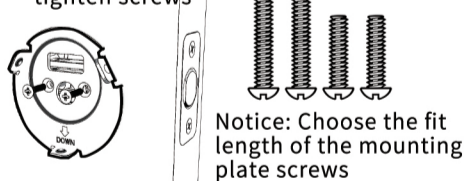


d : Notice: While you confirmed the bolt can be thrown out,hold the DEAD-BUTTON to force it retracted, this will ensure the DEAD-BUTTON on knob is at the right direction



7.INSTALL INSIDE ASSEMBLY

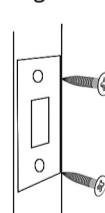
- a. Install the mounting plate and tighten screws
- b. Push down to lock the DEAD-BUTTON
- c. Install inside keypad and tighten screws.



8.INSTALL STRIKE

- a. Close door to make horizontal center line of strike.
- b. Measure one half of door thickness from door stop and vertically mark center line of strike. Drill 1 in.(25.4 mm) hole, 1/2 in.(12.7 mm)deep at intersection of horizontal and vertical line of strike. Mark outline using strike plate and chisel 1/16in.(1.6mm)deep for strike.

- c. Install strike and tighten screws.



Replacement Parts List & Troubleshooting For replacement parts & troubleshooting, call customer service at TEL: 8:00a.m-8:00p.m, EST, Monday-Friday. After sales service, please scan:



facebook scan
EASILOK



website:
www.easilok.com

Limited Lifetime Warranty

The Manufacturer extends a Limited Lifetime Mechanical and finish Warranty to the original "User" of this Product against defects in materials and workmanship as long as the User occupies the residential premises upon which the Product was originally installed. Upon return of a defective Product to the Manufacturer, the Manufacturer shall either replace repair or refund the purchase price in exchange for the Product. This warranty does not cover abused or misused Products or those Products used in commercial applications. No other warranties, express or implied are made with respect to the Product including but not limited to any implied warranty of merchantability or fitness for a particular purpose. The Manufacturer DOES NOT authorize any person to create for it any obligation or liability

in connection with the Product, The Manufacturer maximum liability hereunder limited to the purchase price of the Product, and in no event shall the company be liable for any consequential, indirect, incidental or special damages of any nature arising from the sale or use of this Product. whether in contract, tort, strict liability or otherwise. (For warranty service, please call 8: 00 a m.-8:00 p.m EST, Monday through Friday).

Note: Should the Product be considered a consumer product it may be covered by the Magnusson Moss Federal Warranty Act, please be advised that : (1) Some states do not allow limitations or incidental consequential damages on how long an implied warranty (1) Some states do not allow limitations or incidental consequential damages on how long an implied warranty lasts so that the above limitations do not fully apply; (2) This warranty gives specific legal rights and User may have other rights which may vary from state to state.

Manufacturer DOES NOT authorize any person to create for it any obligation or liability in connection with the Product, The Manufacturer maximum liability hereunder limited